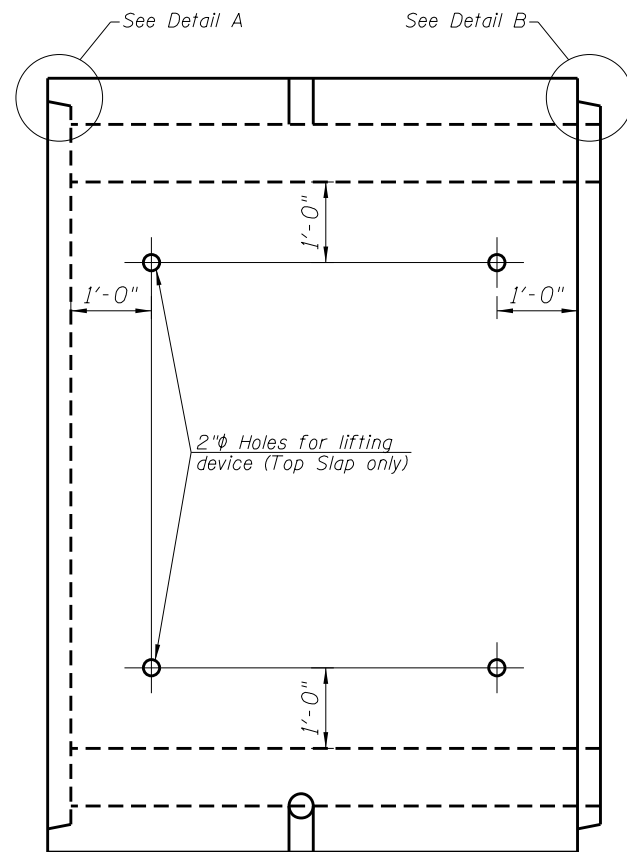
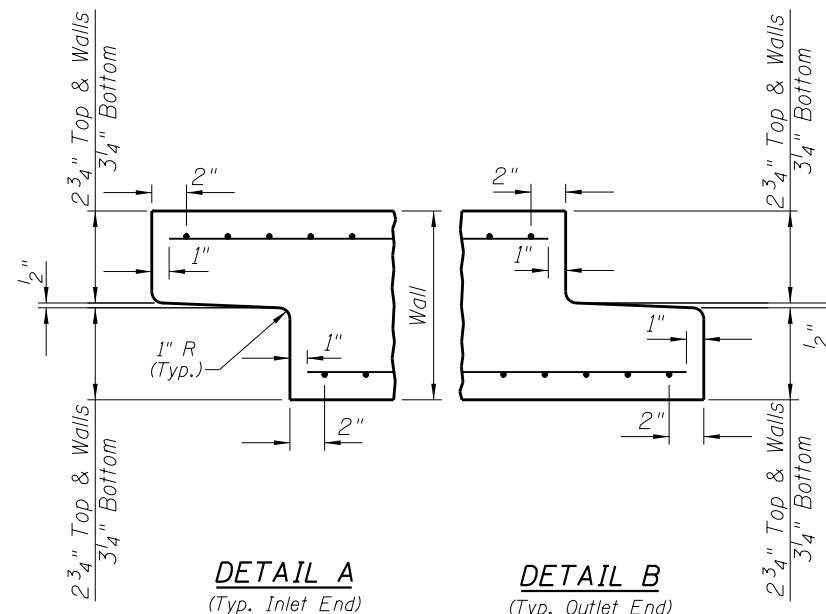


BARREL DETAILS
IL RTE 84
F.A.P. RTE 570 SECTION 101T
JO DAVIESS COUNTY
STA. 1484 + 99
STR. NO. 043-1101



PLAN

Location of lifting holes may be varied as needed to clear reinforcement.



DETAIL A

(Typ. Inlet End)

DETAIL B

(Typ. Outlet End)

Note: Inlet and outlet ends shall be compatible

GENERAL NOTES

Precast Concrete Box Culvert sections shall conform to the requirements of Article 540.06 of the Standard Specifications and the applicable requirements of ASTM C1577.

The minimum concrete strength shall be 5,000 psi.

Lifting holes shall be filled with concrete plugs and mastic after box sections are in place.

FILL = 3.2' Min. To 4.3' Max.

REQUIRED AASHTO STEEL AREAS (in²/ft.)

A_{S1} 0.14
A_{S2} 0.17
A_{S3} 0.16
A_{S4} 0.14

See ASTM C1577 for Longitudinal Steel

REINFORCEMENT PROVIDED

(To be filled out during construction)

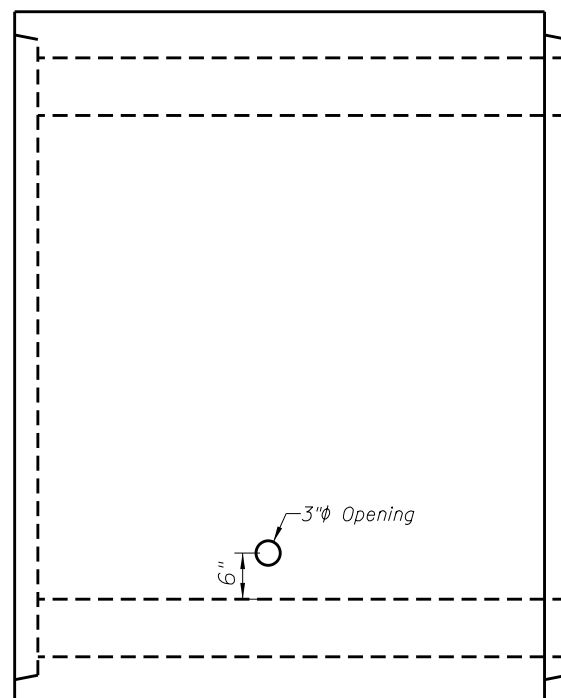
AREA

(in²/ft.)

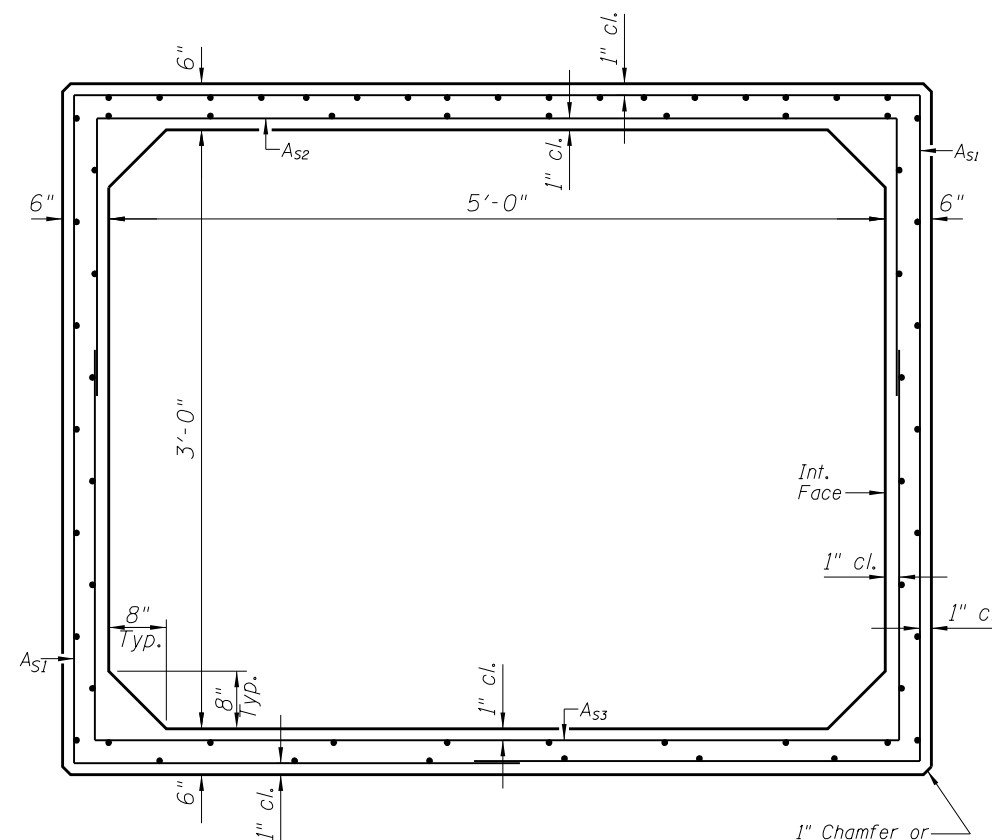
A_{S1} --- x --- W --- x W --- = ---
A_{S2} --- x --- W --- x W --- = ---
A_{S3} --- x --- W --- x W --- = ---
A_{S4} provided by A_{S3} and A_{S3}

BILL OF MATERIAL

ITEM	UNIT	TOTAL
Precast Concrete Box Culvert 5' x 3'	Ft.	60



ELEVATION



CROSS SECTION

DESIGN LOADING

HL-93



USER NAME = dossdd
WES JOB # = 2120015
PLOT SCALE = 10.0000 / in.
PLOT DATE = Tue Jan 22 10:58:42 2013

DESIGNED - SB
DRAWN - BEH
CHECKED - DB
DATE - 1/08/2013

REVISED -
REVISED -
REVISED -
REVISED -

STATE OF ILLINOIS
DEPARTMENT OF TRANSPORTATION

IL 84 STA. 1484 + 99 BARREL DETAILS
STRUCTURE NO. 043-1101

SHEET 2 OF 8 SHEETS STA. 1484+99

F.A.P. RTE.	SECTION	COUNTY	TOTAL SHEETS	SHEET NO.
570	101T	JO DAVIESS	64	31
			CONTRACT NO. 64F75	
ILLINOIS FED. AID PROJECT				