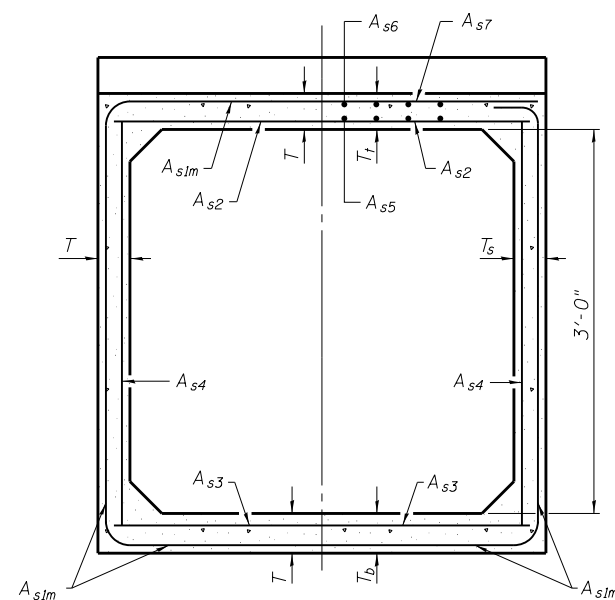
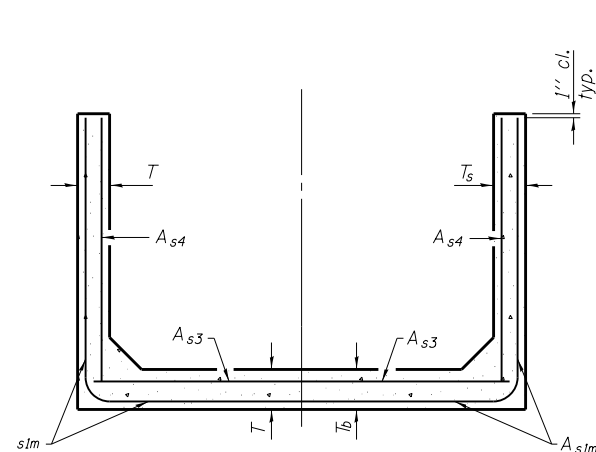


PRECAST END SECTION DETAILS
IL RTE 84
F.A.P. RTE 570 SECTION 101T
JO DAVIESS COUNTY
RT. STA. 1484 + 99
UPSTREAM END
STR. NO. 043-1101



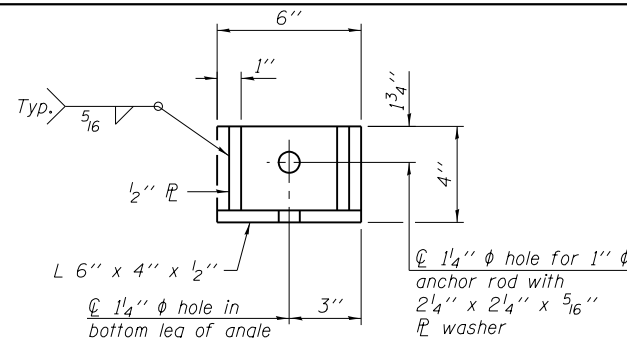
(See AASHTO C1577 for Reinforcement)

SECTION C-C

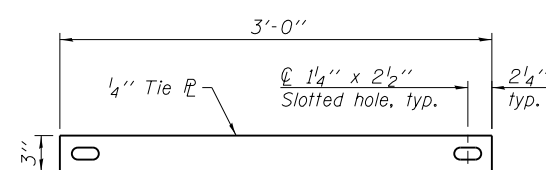


(See AASHTO C1577 for Reinforcement)

SECTION D-D



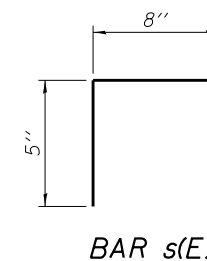
RESTRAINT ANGLE DETAIL



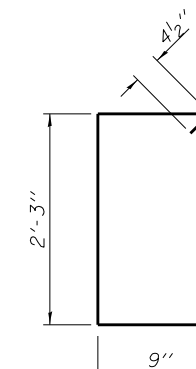
TIE PLATE DETAIL

L₁ DIMENSION

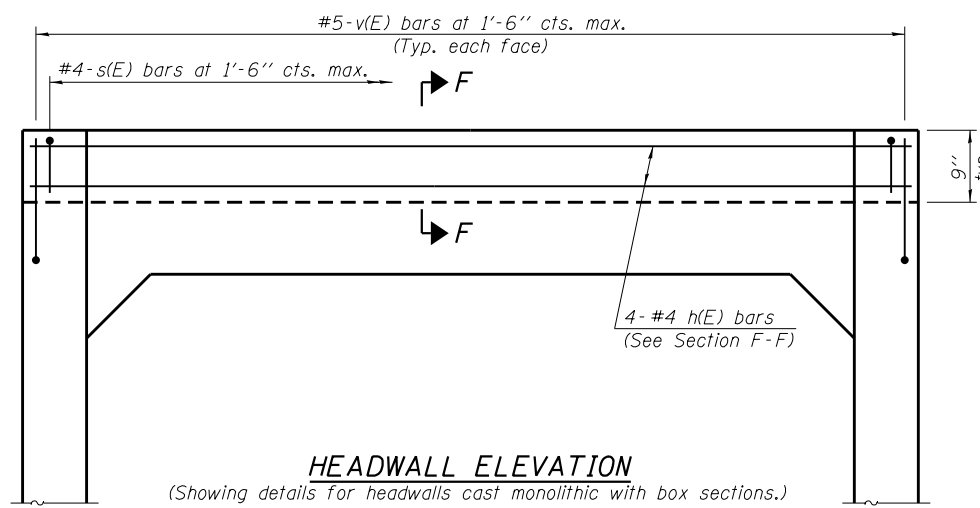
- #3 bar = 2'-0"
- #4 bar = 2'-8"
- #5 bar = 3'-4"
- #6 bar = 3'-11"



BAR s(E)

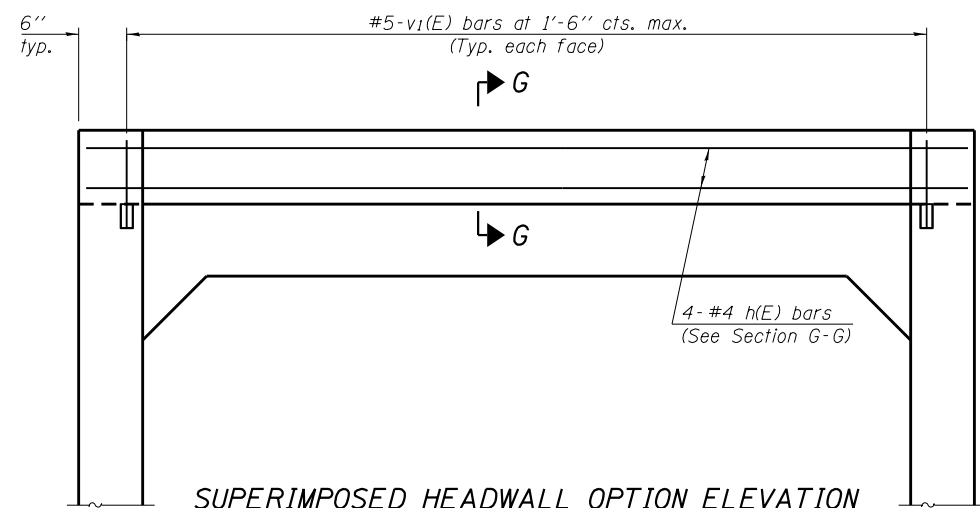


BAR s1



HEADWALL ELEVATION

(Showing details for headwalls cast monolithic with box sections.)
 (Allow sidewall reinforcement to extend into end of headwall.)



SUPERIMPOSED HEADWALL OPTION ELEVATION

12" x 12" block of CA5, CA7 or CA11 coarse aggregate placed over drain opening. Block of aggregate shall be completely wrapped in nonwoven geotextile fabric.

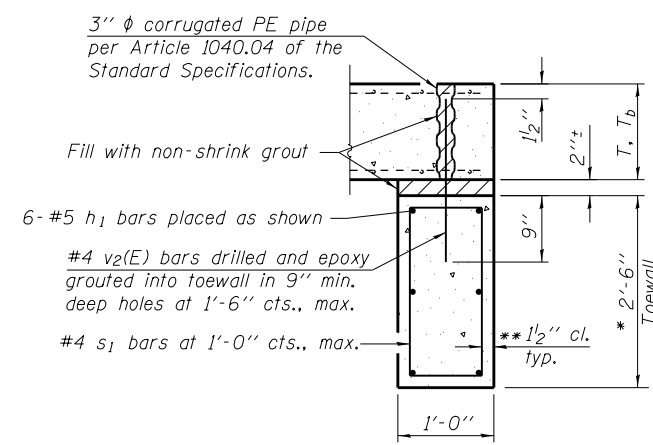
Provide a double layer of 12" x 12" nonwoven geotextile fabric centered over the drain hole. Fabric shall be sealed to the concrete with mastic.

3" φ PVC drain cast with the concrete (Adjust location to clear reinforcement).

1/2" Square foam blockout around PVC drain (to be removed after concrete has cured)

SECTION A-A

(All costs associated with furnishing and constructing the above drain details will not be measured for payment but shall be included in the contract unit price for the end section.)



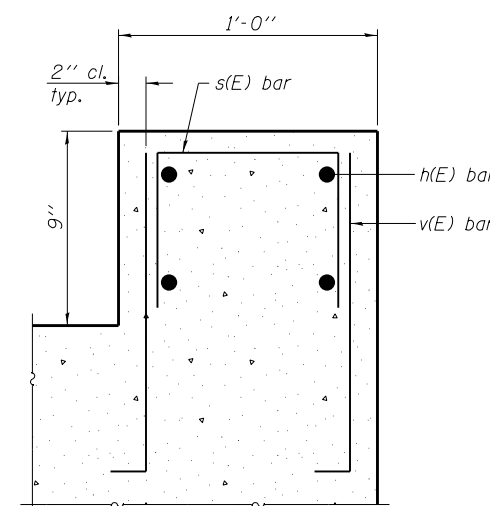
SECTION E-E

TOEWALL CONSTRUCTION SEQUENCE

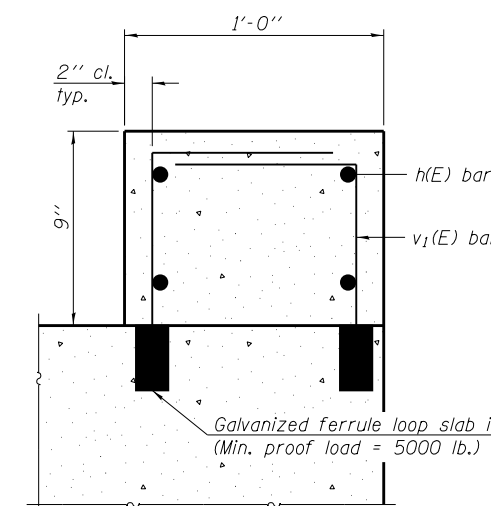
1. Perform excavation and construct toewall.
2. Backfill accordingly and place bedding for precast box culvert end sections.
3. Set precast box culvert end sections in place.
4. Drill and epoxy grout reinforcement in toewall in accordance with Section 584 of the Standard Specifications.
5. Pressure grout voids using non-shrink grout conforming to Section 1024 of the Standard Specifications.

* The Contractor may furnish a precast or cast-in-place toewall. The Contractor shall be responsible for the strength and stability of the precast toewall during handling. Additional lifting points may be required depending upon the length of the toewall or the Contractor may need to modify the design of the toewall for the proposed handling method.

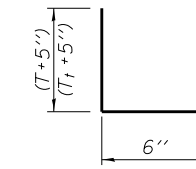
** If soil conditions permit, the sides of the toewall may be poured directly against the soil. The clear cover on the sides of the toewall shall be increased to 3" by increasing the thickness of the toewall.



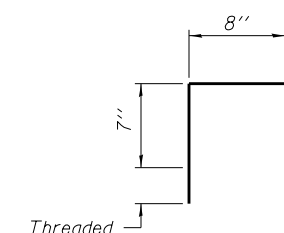
SECTION F-F



SECTION G-G



BAR v(E)



BAR v1(E)

2-16-11



USER NAME = dossdd	DESIGNED SB	REVISED -
WES JOB # = 2120015	DRAWN BEH	REVISED -
PLOT SCALE = 100.0000' / 1in.	CHECKED DB	REVISED -
PLOT DATE = Tue Jan 22 11:04:01 2013	DATE 1/08/2013	REVISED -

STATE OF ILLINOIS
DEPARTMENT OF TRANSPORTATION

PRECAST END SECTION DETAILS RT. STA. 1484 + 99 UPSTREAM END
STRUCTURE NO. 043-1101

SHEET 7 OF 8 SHEETS STA. 1484+99

F.A.P. RTE. 570	SECTION 101T	COUNTY JO DAVIESS	TOTAL SHEETS 64	SHEET NO. 36
CONTRACT NO. 64F75			ILLINOIS FED. AID PROJECT	