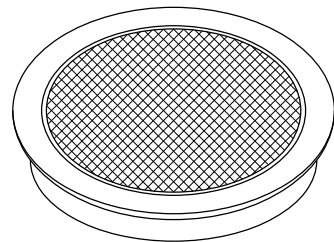
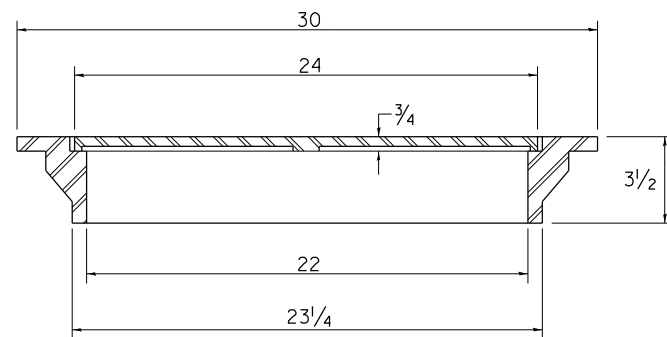


FIELD TILE JUNCTION VAULTS 24 AND 36 DIA.

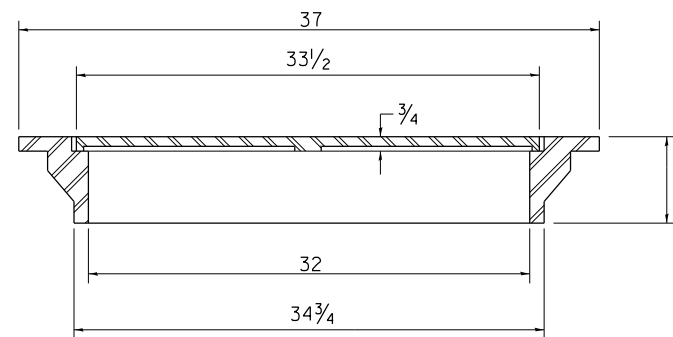


FRAME & LID FOR
24 VAULT

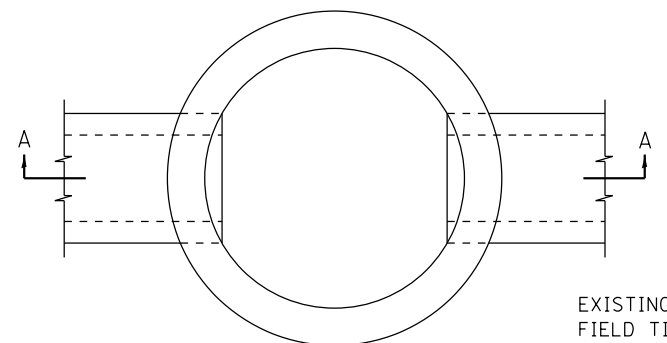
FRAME & LID FOR
36 VAULT



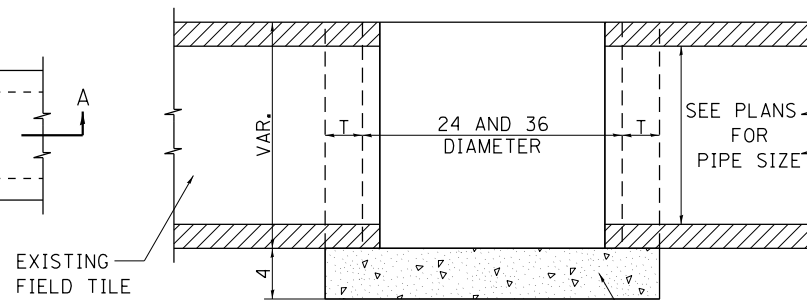
TOTAL WEIGHT: 146 LBS.



TOTAL WEIGHT: 280 LBS.



PLAN

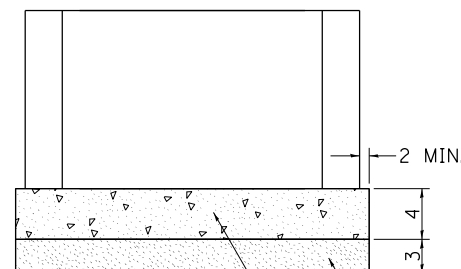


CAST-IN-PLACE CONCRETE
SECTION A-A

ALTERNATE MATERIALS FOR WALLS	T
BRICK MASONRY	8
CAST-IN-PLACE CONCRETE	6
CONCRETE MASONRY UNIT	5
PRECAST REINFORCED CONCRETE SECTION	3

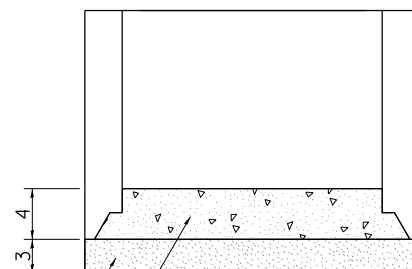
NOTE: THE FRAME AND LID
IS REQUIRED ON ALL
JUNCTION VAULTS.

ALL DIMENSIONS ARE IN INCHES UNLESS OTHERWISE NOTED.



PRECAST REINFORCED
CONCRETE SLAB

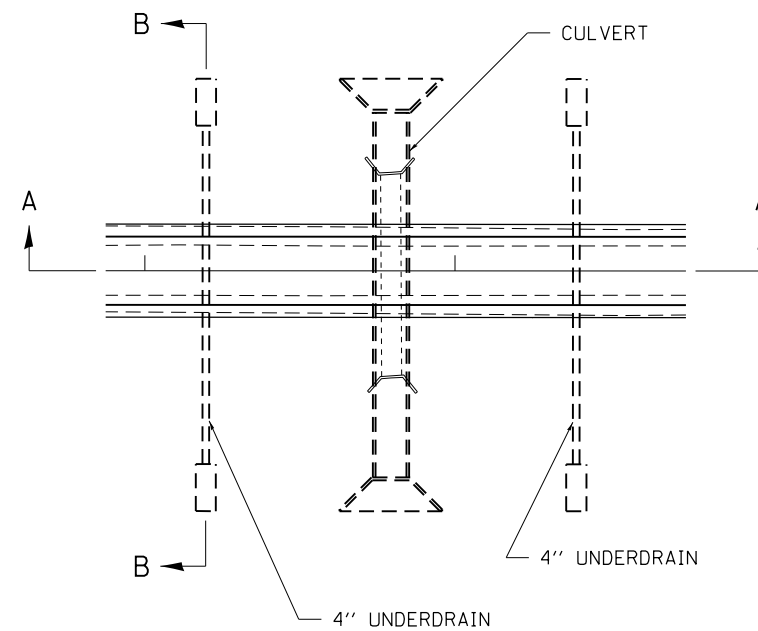
SAND CUSHION
ALTERNATE METHODS



PREFABRICATED CONCRETE SLAB,
WHEN THE PRECAST REINFORCED
CONCRETE SECTION ALTERNATE
IS USED.

REVISED - 10-14-11

UNDERDRAIN FOR ACROSS ROAD (AR) CULVERTS



NOTES:

IN SAG CONDITIONS INSTAL PIPE UNDERDRAINS
ON BOTH SIDES OF CULVERT.

ON HIGHWAY GRADES GREATER THAN 2%
INSTALL PIPE UNDERDRAINS ON THE HIGH
SIDE OF THE CULVERT.

THIS WORK SHALL BE COMPLETED ACCORDING
TO SECTION 601 OF THE STANDARD
SPECIFICATION.

THE UNDERDRAIN SHALL EXTEND UNTIL
INTERSECTING WITH THE SIDE SLOPES. THE PIPES
SHALL DRAIN INTO CONCRETE HEADWALLS. (SEE
ARTICLE 601.05 OF THE STANDARD SPECIFICATIONS
AND HIGHWAY STANDARDS 601101).

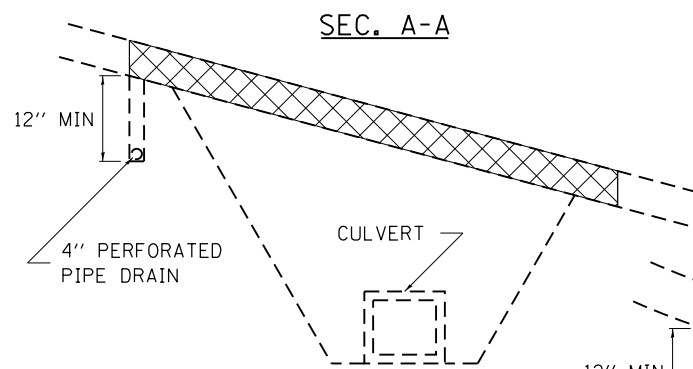
THE UNDERDRAIN SHALL BE A MINIMUM OF
12" BELOW THE EXISTING PAVEMENT.

THE TRENCH FOR THE UNDERDRAIN SHALL BE
BACKFILLED WITH CA7 OR CA16.

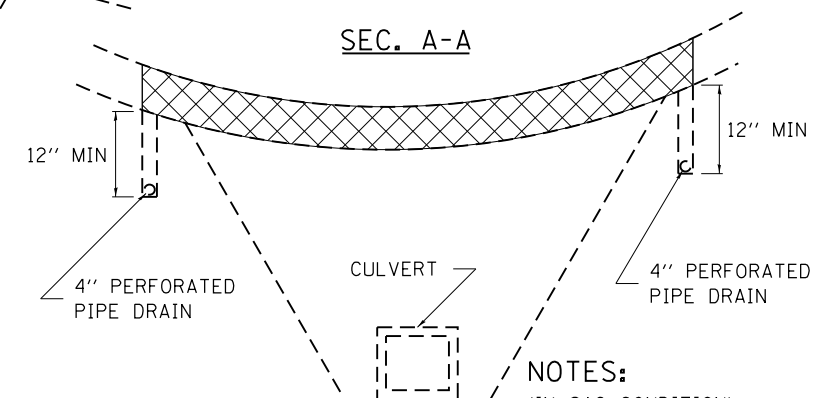
THE TRENCH SHALL BE WRAPPED USING A FABRIC
ENVELOPE MEETING THE REQUIREMENTS OF
ARTICLE 1080.05 OF THE STANDARD SPECIFICATIONS.
FABRIC ENCASING THE PIPE SHALL BE ELIMINATED.

PIPE UNDERDRAINS WILL BE PAID FOR AT THE
CONTRACT UNITPRICE PER FOOT FOR PIPE
UNDERDRAINS 4".

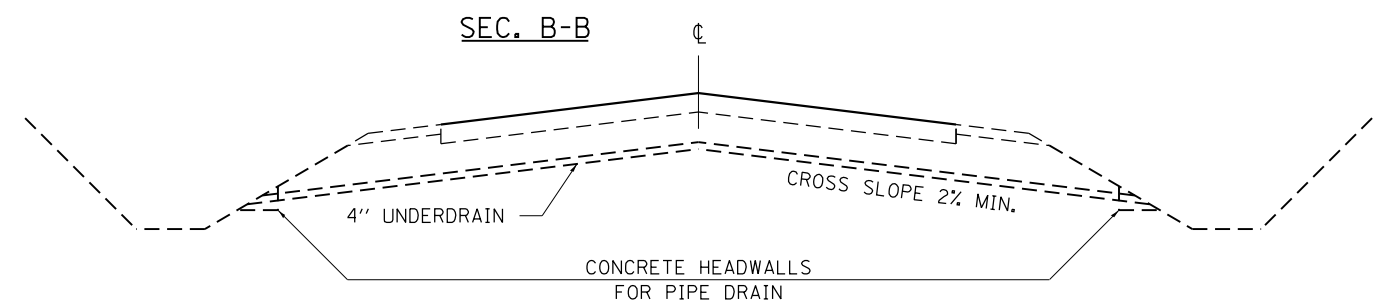
CONCRETE HEADWALLS WILL BE PAID FOR AT THE
CONTACT UNIT PRICE PER EACH FOR CONCRETE
HEADWALLS FOR PIPE DRAINS.



NOTES:
(HIGHWAY GRADE GREATER THAN 2%)



NOTES:
(IN SAG CONDITION)
(PIPE DRAIN ON EACH SIDE)



REVISED - 7-05-12
REVISED -
REVISED -
REVISED -

REGION 2 / DISTRICT 2 STANDARD

SCALE: 100.0000' / 1" SHEET NO. OF SHEETS STA. TO STA.

F.A.P. RTE.	SECTION	COUNTY	TOTAL SHEETS	SHEET NO.
570	101T	JO DAVIESS	64	44
CONTRACT NO. 64F75				

FED. ROAD DIST. NO. ILLINOIS FED. AID PROJECT