

F.A.P. RTE.	SECTION	COUNTY	TOTAL SHEETS	SHEET NO.
613	(8C,9,10,11) RS-3	BUREAU	18	1
		ILLINOIS	Contract No. 66919	

**STATE OF ILLINOIS**  
**DEPARTMENT OF TRANSPORTATION**  
**DIVISION OF HIGHWAYS**

D-93-031-09



**PROPOSED**  
**HIGHWAY PLANS**

**FAP ROUTE 613 (US 34/US 6)**  
**SECTION (8C,9,10,11) RS-3**  
**PROJECT : HPP-F-0613 (020)**  
**TYPE of IMPROVEMENT: 3P RESURF, SHLD WID**  
**BUREAU COUNTY**

C-93-054-09



INDEX OF SHEETS

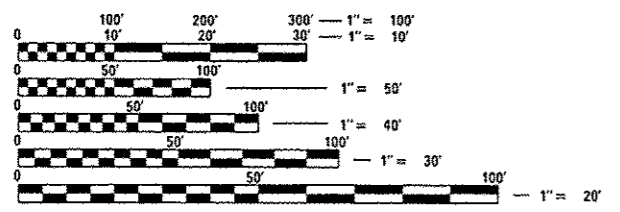
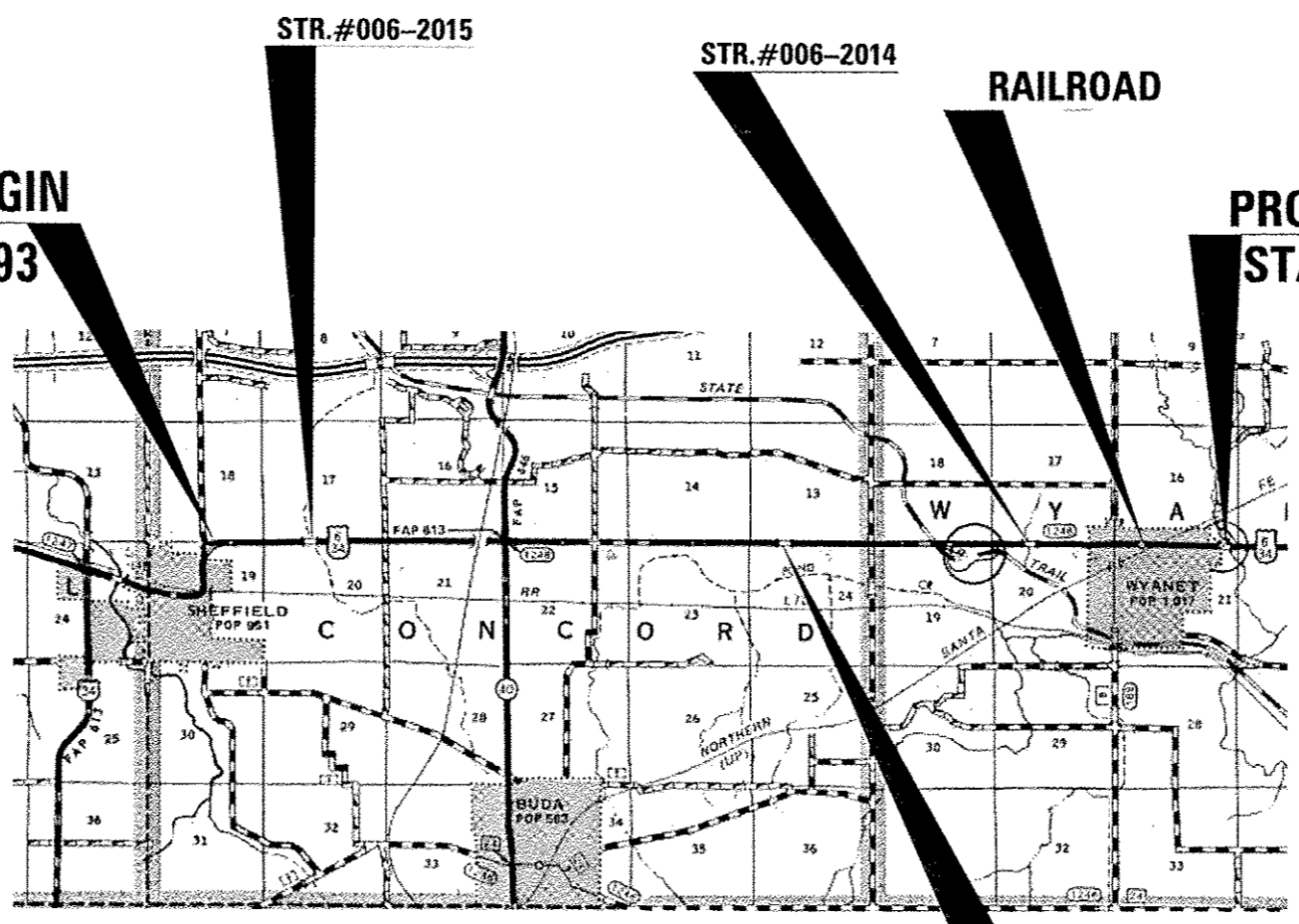
- 1 COVER SHEET
- 2 GENERAL NOTES; LOCATION MAP
- 3-6 SUMMARY OF QUANTITIES
- 7-8 TYPICAL SECTIONS
- 9-12 SCHEDULE OF QUANTITIES
- 13-18 DETAILS

STANDARDS

- 000001-06 STANDARD SYMBOLS, ABBREVIATIONS AND PATTERNS
- 001006 DECIMAL OF AN INCH AND OF A FOOT
- 406201-01 MAILBOX TURNOUT
- 424001-07 PERPENDICULAR CURB RAMPS FOR SIDEWALKS
- 424026-01 ENTRANCE / ALLEY PEDESTRIAN CROSSINGS
- 667101-02 PERMANENT SURVEY MARKERS
- 701001-02 OFF-ROAD OPERATIONS 2L, 2W, MORE THAN 15' (4.5 m) AWAY
- 701006-04 OFF-ROAD OPERATIONS 2L, 2W, 15' (4.5 m) TO 24' (600 mm) FROM PAVEMENT EDGE
- 701011-03 OFF-ROAD MOVING OPERATIONS 2L, 2W, DAY ONLY
- 701301-04 LANE CLOSURE, 2L, 2W, SHORT TIME OPERATIONS
- 701326-04 LANE CLOSURE, 2L, 2W, PAVEMENT WIDENING, FOR SPEEDS ≥ 45 MPH
- 701501-06 URBAN LANE CLOSURE, 2L, 2W, UNDIVIDED
- 701801-05 LANE CLOSURE, MULTILANE 1W OR 2W CROSSWALK OR SIDEWALK CLOSURE
- 701901-02 TRAFFIC CONTROL DEVICES
- 780001-03 TYPICAL PAVEMENT MARKINGS
- 781001-03 TYPICAL APPLICATIONS RAISED REFLECTIVE PAVEMENT MARKERS

**PROJECT BEGIN**  
**STA 1034 + 93**

**PROJECT END**  
**STA 1458 + 78**



FULL SIZE PLANS HAVE BEEN PREPARED USING STANDARD ENGINEERING SCALES. REDUCED SIZED PLANS WILL NOT CONFORM TO STANDARD SCALES. IN MAKING MEASUREMENTS ON REDUCED PLANS, THE ABOVE SCALES MAY BE USED.

J.U.L.I.E.  
 JOINT UTILITY LOCATION INFORMATION FOR EXCAVATION  
 1-800-892-0123  
 OR 811

**PROJECT ENGINEER J.KANNEL, P.E.**  
**PROJECT MANAGER P.BRABOY**

**CONTRACT NO. 66919**

GROSS LENGTH = 42420 FT. = 8.03 MILE  
 NET LENGTH = 42372 FT. = 8.02 MILE

STR.#006-2013

FUNCTIONAL CLASSIFICATION-  
**MAJOR COLLECTOR (RURAL)**

2009 ADT = 2200 VPD  
 PV = 93.2% SU = 4.1% MU = 2.7%

STATE OF ILLINOIS  
 DEPARTMENT OF TRANSPORTATION  
 DIVISION OF HIGHWAYS

SUBMITTED *Jan. 22<sup>nd</sup> 2013*  
*Paul A. Pich*  
 DEPUTY DIRECTOR OF HIGHWAYS, REGION ENGINEER

*March 22 2013*  
*John D. Baranzelli, P.E. /sr*  
 acting ENGINEER OF DESIGN AND ENVIRONMENT

*March 22 2013*  
*Omer Osman, P.E. /sr*  
 DIRECTOR OF HIGHWAYS, CHIEF ENGINEER

**PRINTED BY THE AUTHORITY**  
**OF THE STATE OF ILLINOIS**