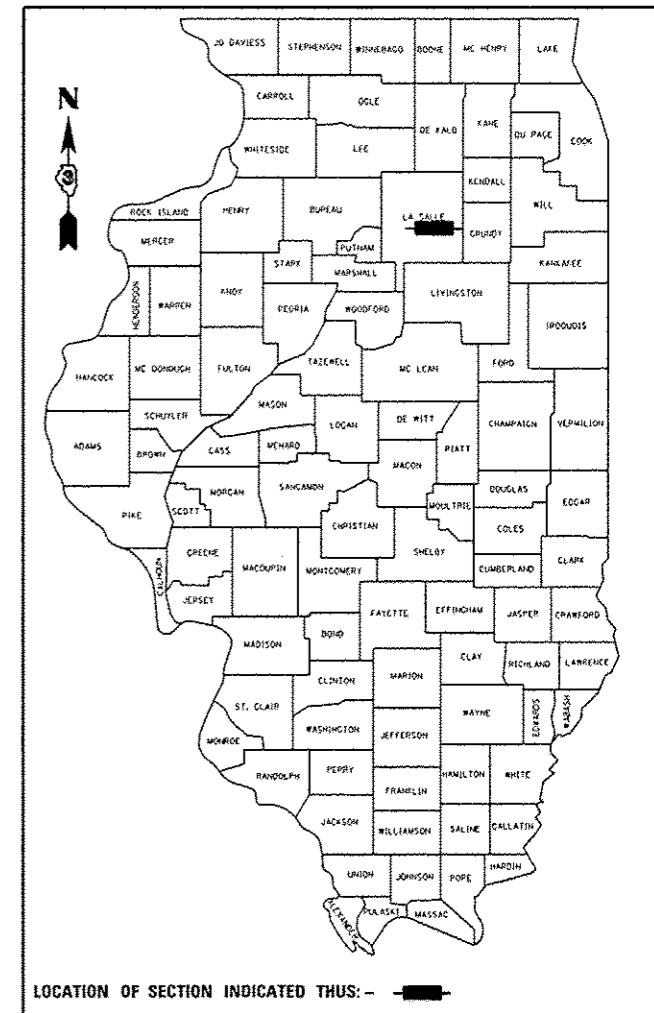


STATE OF ILLINOIS  
DEPARTMENT OF TRANSPORTATION  
DIVISION OF HIGHWAYS

F.A.P. RTE.	SECTION	COUNTY	TOTAL SHEETS	SHEET NO.
623	(G,G-1,G-R)RS-5	LASALLE	19	1
		ILLINOIS	CONTRACT NO. 66947	

D-93-045-09



LOCATION OF SECTION INDICATED THUS: - [shaded box] -

FUNCTIONAL CLASSIFICATION-  
MINOR ARTERIAL (RURAL)

2011 ADT = 4400 VPD  
PV = 95.7% SU = 2.3% % MU = 2%

STATE OF ILLINOIS  
DEPARTMENT OF TRANSPORTATION  
DIVISION OF HIGHWAYS

SUBMITTED 11-14 2012  
*Paul A. Carter*  
DEPUTY DIRECTOR OF HIGHWAYS, REGION ENGINEER

March 22 2013  
*John D. Baranzoli, P.E.*  
ENGINEER OF DESIGN AND ENVIRONMENT

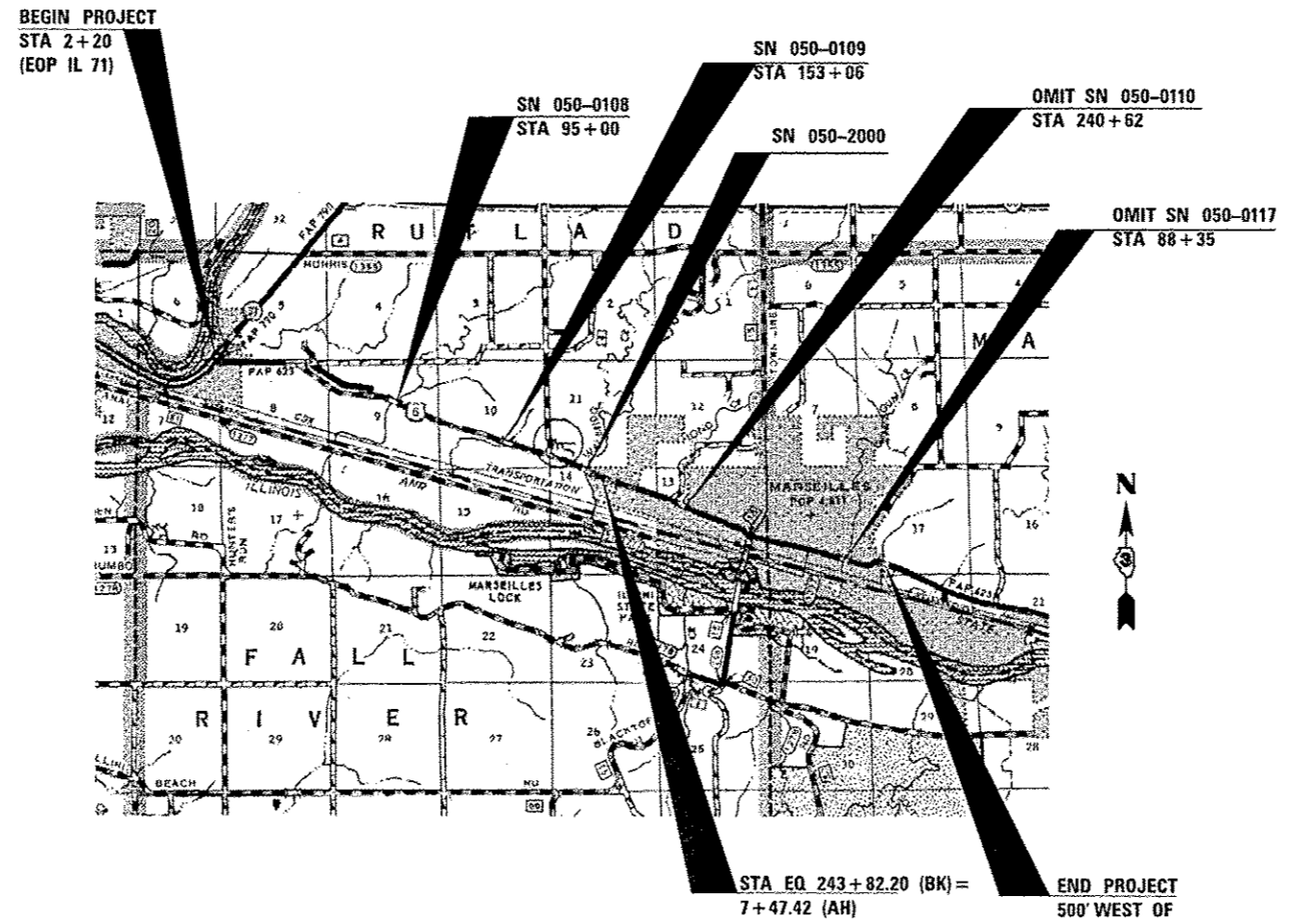
March 22 2013  
*Onor Osman, P.E.*  
DIRECTOR OF HIGHWAYS, CHIEF ENGINEER

PRINTED BY THE AUTHORITY  
OF THE STATE OF ILLINOIS

PROPOSED  
HIGHWAY PLANS

FAP ROUTE 623 (US 6)  
SECTION (G,G-1,G-R)RS-5  
PROJECT: ACF-0623(032)  
TYPE of IMPROVEMENT-3P RESURFACING  
LASALLE COUNTY

C-93-082-09



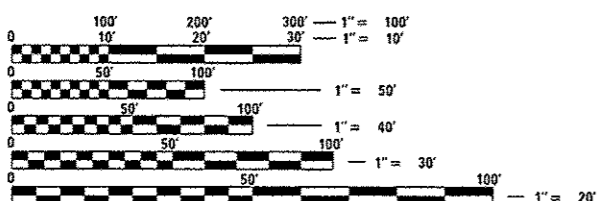
GROSS LENGTH = 34,051 FT. = 6.45 MILE  
NET LENGTH = 33,907 FT. = 6.42 MILE

INDEX OF SHEETS

- 1 COVER SHEET
- 2 GENERAL NOTES & LOCATION MAP
- 3-6 SUMMARY OF QUANTITIES
- 7-8 TYPICAL SECTIONS
- 9-13 SCHEDULES
- 14 STRAIGHT LINE DIAGRAM
- 15-19 DETAILS

STANDARDS

- 000001-06 STANDARD SYMBOLS, ABBREVIATIONS AND PATTERNS
- 001006 DECIMAL OF AN INCH AND OF A FOOT
- 406201-01 MAILBOX TURNOUT
- 424001-07 CURB RAMPS FOR SIDEWALK
- 606001-04 CONCRETE CURB TYPE B AND COMBINATION CONCRETE CURB AND GUTTER
- 630301-06 SHOULDER WIDENING FOR TYPE I (SPECIAL) GUARDRAIL TERMINALS
- 635006-03 REFLECTOR AND TERMINAL MARKER PLACEMENT
- 701001-02 OFF-ROAD OPERATIONS 2L, 2W, MORE THAN 15' (4.5 m) AWAY
- 701006-04 OFF-ROAD OPERATIONS 2L, 2W, 15' (4.5 m) TO 24' (600 mm) FROM PAVEMENT EDGE
- 701011-03 OFF-ROAD MOVING OPERATIONS 2L, 2W, DAY ONLY
- 701201-04 LANE CLOSURE, 2L, 2W, DAY ONLY, FOR SPEEDS \*\*e\*\* 45 MPH
- 701301-04 LANE CLOSURE, 2L, 2W, SHORT TIME OPERATIONS
- 701306-93 LANE CLOSURE, 2L, 2W, SLOW MOVING OPERATIONS DAY ONLY, FOR SPEEDS \*\*e\*\* 45 MPH
- 701311-03 LANE CLOSURE, 2L, 2W, MOVING OPERATIONS - DAY ONLY
- 701501-04 URBAN LANE CLOSURE, 2L, 2W, UNDIVIDED
- 701502-05 URBAN LANE CLOSURE, 2L, 2W, WITH BIDIRECTIONAL LEFT TURN LANE
- 701801-05 LANE CLOSURE, MULTILANE 1W OR 2W CROSSWALK OR SIDEWALK CLOSURE
- 701901-02 TRAFFIC CONTROL DEVICES
- 780001-03 TYPICAL PAVEMENT MARKINGS
- 781001-03 TYPICAL APPLICATIONS RAISED REFLECTIVE PAVEMENT MARKERS
- 701321-13 LANE CLOSURE, 2L, 2W, BRIDGE REPAIR W/ BARRIER



FULL SIZE PLANS HAVE BEEN PREPARED USING STANDARD ENGINEERING SCALES. REDUCED SIZED PLANS WILL NOT CONFORM TO STANDARD SCALES. IN MAKING MEASUREMENTS ON REDUCED PLANS, THE ABOVE SCALES MAY BE USED.

J.U.L.I.E.  
JOINT UTILITY LOCATION INFORMATION FOR EXCAVATION  
1-800-892-0123  
OR 811

PROJECT ENGINEER-JOE KANNEL  
UNIT CHIEF-PAT BRABOY  
TOWNSHIP-FALL RIVERMANLIUS  
CONTRACT NO. 66947

Rev.