

F.A.I. RTE.	SECTION	COUNTY	TOTAL SHEETS	SHEET NO.
80	06-4RA-6	BUREAU	13	1
		ILLINOIS	CONTRACT NO. 66C49	

INDEX OF SHEETS

1. COVER SHEET
2. GENERAL NOTES
3. SUMMARY OF QUANTITIES
4. TYPICAL SECTIONS.
5. GENERAL SITE PLAN FOR WESTBOUND REST AREA-TRUCK LOT
6. SITE PLAN-TRUCK LOT PAVEMENT REMOVAL & REPLACEMENT
- 7-8. DRAINAGE STRUCTURE RECONSTRUCTION
9. DRAINAGE STRUCTURE PIPE UNDERDRAIN
- 10-12. SIDEWALK DETAILS
13. FRAME AND LIDS, SPECIAL

STANDARDS

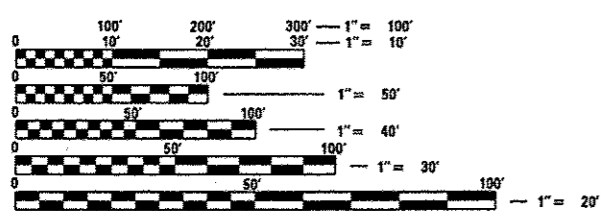
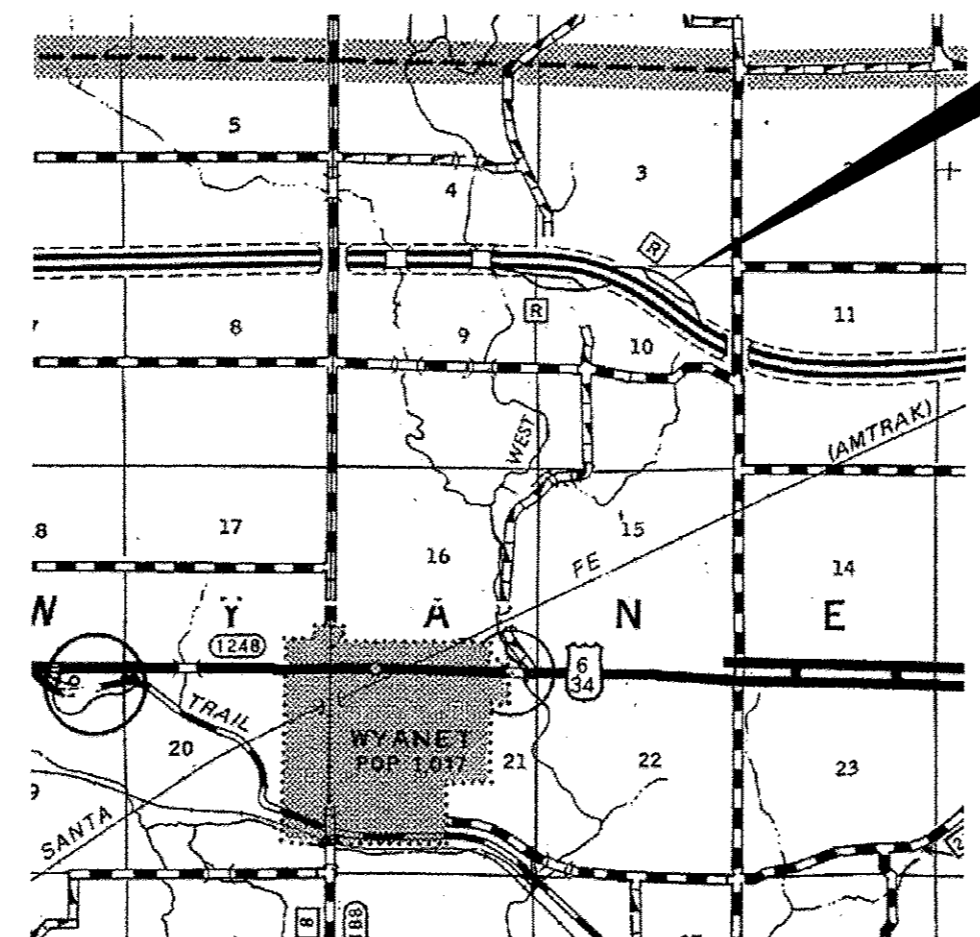
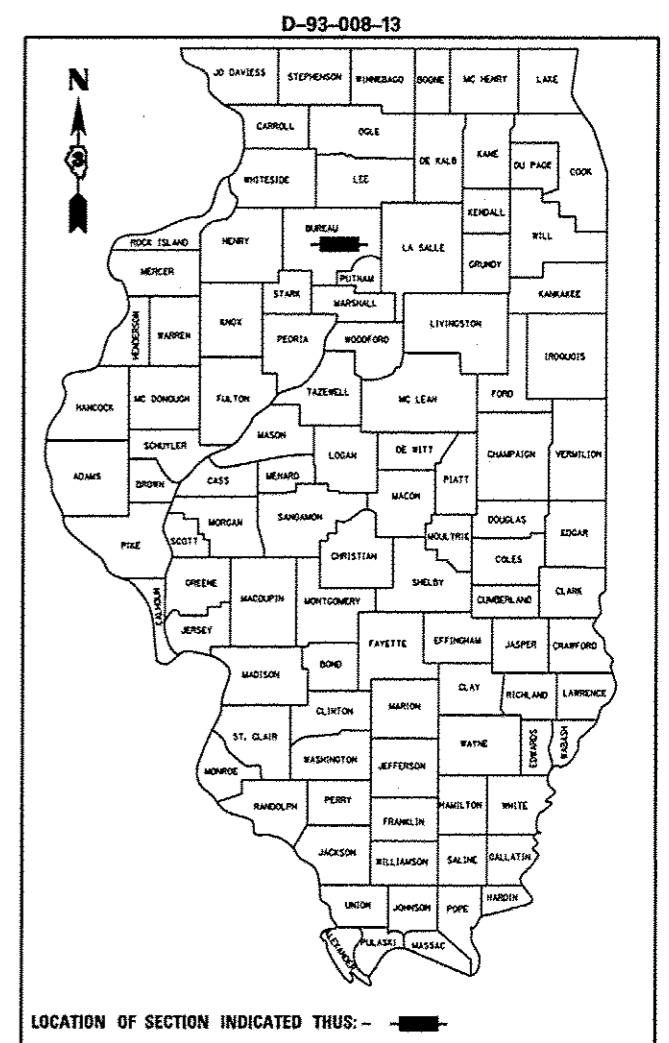
- 000001-06 STANDARD SYMBOLS, ABBREVIATIONS AND PATTERNS
- 001001-02 AREAS OF REINFORCEMENT BARS
- 001006 DECIMAL OF AN INCH AND OF A FOOT
- 420001-07 PAVEMENT JOINTS
- 420701-02 PAVEMENT FABRIC
- 421001-02 BAR REINFORCEMENT FOR CRC PAVEMENT
- 442001-04 CLASS A PATCHES
- 442101-07 CLASS B PATCHES
- 701101-02 OFF-ROAD OPERATIONS MULTILANE, 15 (4.5 m) TO 24" (600mm) FROM EDGE OF PAVEMENT
- 701801-05 SIDEWALK, CORNER OR CROSSWALK CLOSURE
- 701901-02 TRAFFIC CONTROL DEVICES

STATE OF ILLINOIS
DEPARTMENT OF TRANSPORTATION
DIVISION OF HIGHWAYS

PROPOSED
HIGHWAY PLANS

FAI ROUTE 80 (I-80)
SECTION (06-4)RA-6

REST AREA REPAIR AND RENOVATION
BUREAU COUNTY
 C-93-003-13



FULL SIZE PLANS HAVE BEEN PREPARED USING STANDARD ENGINEERING SCALES. REDUCED SIZED PLANS WILL NOT CONFORM TO STANDARD SCALES. IN MAKING MEASUREMENTS ON REDUCED PLANS, THE ABOVE SCALES MAY BE USED.

J.U.L.I.E.
 JOINT UTILITY LOCATION INFORMATION FOR EXCAVATION
 1-800-892-0123
 OR 811

PROJECT ENGINEER: JOE KANNEL P.E.
UNIT CHIEF: RON WOODSHANK
TOWNSHIP: WYANET
CONTRACT NO. 66C49

STATE OF ILLINOIS
 DEPARTMENT OF TRANSPORTATION
 DIVISION OF HIGHWAYS

SUBMITTED *Feb 5th 2013*
Paul [Signature]
 DEPUTY DIRECTOR OF HIGHWAYS, REGION ENGINEER

March 22 2013
John D. Baranzoli, P.E. [Signature]
 acting ENGINEER OF DESIGN AND ENVIRONMENT

March 22 2013
Omair Osman, P.E. [Signature]
 DIRECTOR OF HIGHWAYS, CHIEF ENGINEER

PRINTED BY THE AUTHORITY
OF THE STATE OF ILLINOIS