

STATE OF ILLINOIS
DEPARTMENT OF TRANSPORTATION
DIVISION OF HIGHWAYS

**PROPOSED
HIGHWAY PLANS**

FAI ROUTE 80 (I-80)
SECTION (06-4)RA-6

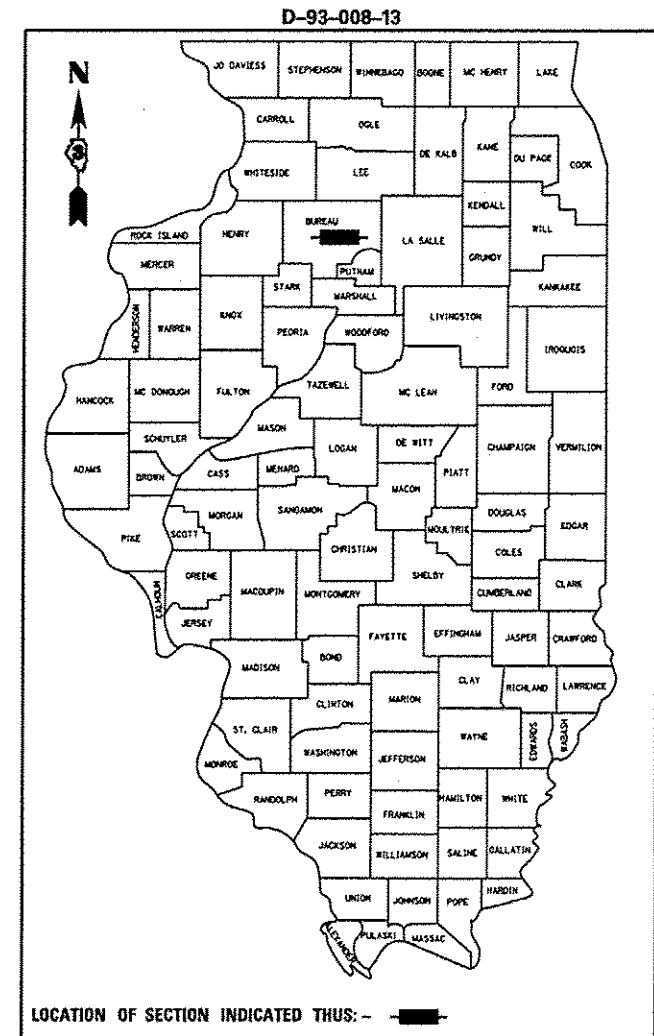
REST AREA REPAIR AND RENOVATION
BUREAU COUNTY
C-93-003-13

F.A.I. RTE.	SECTION	COUNTY	TOTAL SHEETS	SHEET NO.
80	106-41RA-6	BUREAU	13	1
ILLINOIS			CONTRACT NO. 66C49	

1. COVER SHEET
2. GENERAL NOTES
3. SUMMARY OF QUANTITIES
4. TYPICAL SECTIONS.
5. GENERAL SITE PLAN FOR WESTBOUND REST AREA-TRUCK LOT
6. SITE PLAN-TRUCK LOT PAVEMENT REMOVAL & REPLACEMENT
- 7-8. DRAINAGE STRUCTURE RECONSTRUCTION
9. DRAINAGE STRUCTURE PIPE UNDERDRAIN
- 10-12. SIDEWALK DETAILS
13. FRAME AND LIDS, SPECIAL

STANDARDS

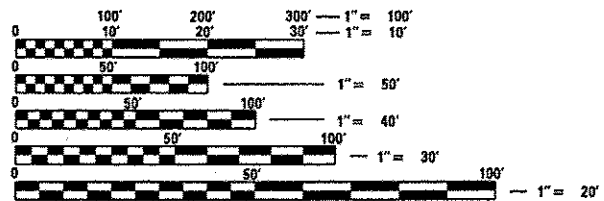
- 000001-06 STANDARD SYMBOLS, ABBREVIATIONS AND PATTERNS
- 001001-02 AREAS OF REINFORCEMENT BARS
- 001006 DECIMAL OF AN INCH AND OF A FOOT
- 420001-07 PAVEMENT JOINTS
- 420701-02 PAVEMENT FABRIC
- 421001-02 BAR REINFORCEMENT FOR CRC PAVEMENT
- 442001-04 CLASS A PATCHES
- 442101-07 CLASS B PATCHES
- 701101-02 OFF-ROAD OPERATIONS MULTILANE, 15 (4.5 m) TO 24" (600mm) FROM EDGE OF PAVEMENT
- 701801-05 SIDEWALK, CORNER OR CROSSWALK CLOSURE
- 701901-02 TRAFFIC CONTROL DEVICES



LOCATION OF SECTION INDICATED THIS: - -

RURAL - INTERSTATE
FAI RTE. 80 (I-80)
2009

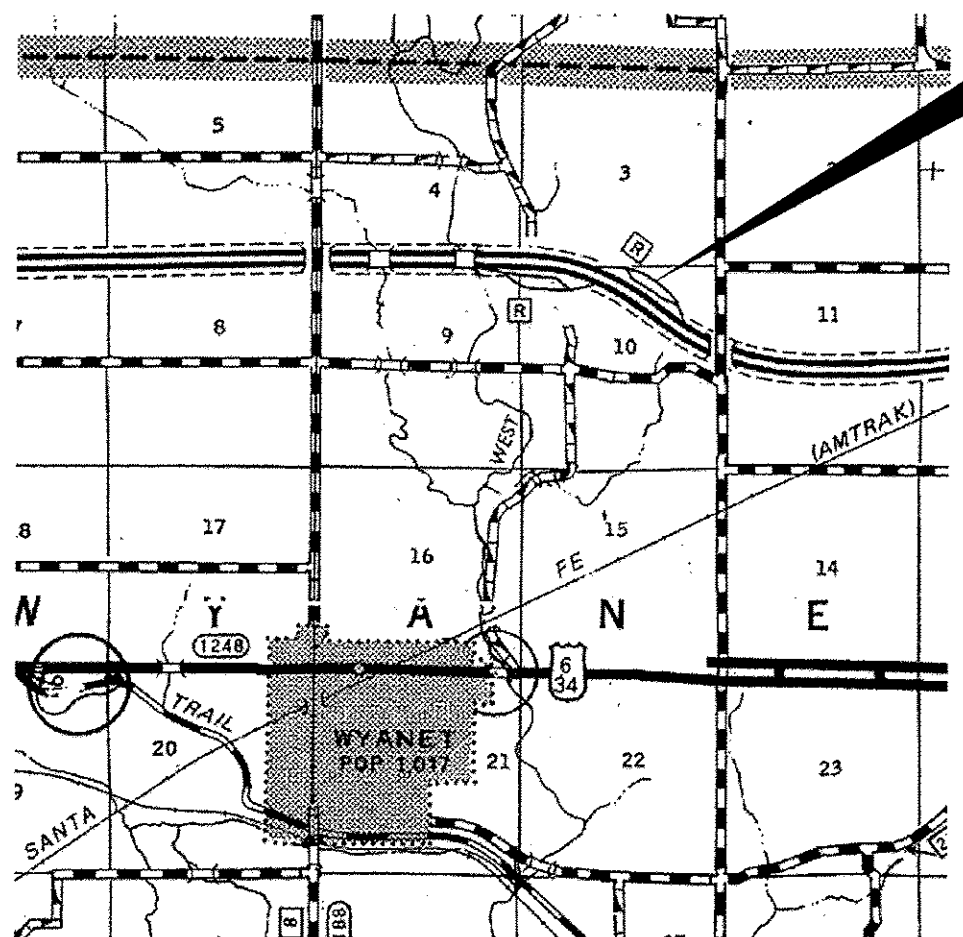
ADT	1200
P.V.	47.95%
S.U.	33.30%
M.U.	18.75%



FULL SIZE PLANS HAVE BEEN PREPARED USING STANDARD ENGINEERING SCALES. REDUCED SIZED PLANS WILL NOT CONFORM TO STANDARD SCALES. IN MAKING MEASUREMENTS ON REDUCED PLANS, THE ABOVE SCALES MAY BE USED.

J.U.L.I.E.
JOINT UTILITY LOCATION INFORMATION FOR EXCAVATION
1-800-892-0123
OR 811

PROJECT ENGINEER: JOE KANNEL P.E.
UNIT CHIEF: RON WOODSHANK
TOWNSHIP: WYANET
CONTRACT NO. 66C49



PROJECT LOCATION
FAI ROUTE 80
GREAT SAUK TRAILS
WESTBOUND REST AREA

STATE OF ILLINOIS
DEPARTMENT OF TRANSPORTATION
DIVISION OF HIGHWAYS

SUBMITTED *Feb 5th 2013*
Paul A. [Signature]
DEPUTY DIRECTOR OF HIGHWAYS, REGION ENGINEER

March 22 2013
John D. Baranzelli, P.E. [Signature]
ENGINEER OF DESIGN AND ENVIRONMENT

March 22 2013
Omair Osman, P.E. [Signature]
DIRECTOR OF HIGHWAYS, CHIEF ENGINEER

PRINTED BY THE AUTHORITY
OF THE STATE OF ILLINOIS

GENERAL NOTES

PLAN DIMENSIONS AND DETAILS RELATIVE TO EXISTING PLANS ARE SUBJECT TO NOMINAL CONSTRUCTION VARIATIONS. THE CONTRACTOR SHALL FIELD VERIFY EXISTING DIMENSIONS AND DETAILS AFFECTING NEW CONSTRUCTION AND MAKE NECESSARY APPROVED ADJUSTMENTS PRIOR TO CONSTRUCTION OR ORDERING OF MATERIALS. SUCH VARIATIONS SHALL NOT BE CAUSE FOR ADDITIONAL COMPENSATION FOR A CHANGE IN SCOPE OF WORK; HOWEVER, THE CONTRACTOR WILL BE PAID FOR THE QUANTITY ACTUALLY FURNISHED AT THE UNIT PRICE BID FOR THE WORK.

FOR STABILIZATION, ALL TYPE III BARRICADES SHALL REQUIRE A MINIMUM OF FOUR SAND BAGS PER BARRICADE.

ABANDONED UNDERGROUND UTILITIES THAT CONFLICT WITH CONSTRUCTION SHALL BE DISPOSED OF OUTSIDE THE LIMITS OF THE RIGHT OF WAY ACCORDING TO ARTICLE 202.03 OF THE STANDARD SPECIFICATIONS AND AS DIRECTED BY THE ENGINEER. THIS WORK WILL NOT BE PAID FOR SEPARATELY, BUT SHALL BE INCLUDED IN THE COST OF EARTH EXCAVATION.

ANY REFERENCE TO A STANDARD IN THESE PLANS SHALL BE INTERPRETED TO MEAN THE EDITION AS INDICATED BY THE SUBNUMBER SHOWN IN THE LIST OF STANDARDS OR THE COPY INCLUDED IN THESE PLANS.

THE CONTRACTOR'S ATTENTION IS DIRECTED TO THE PRESENCE OF DEPARTMENT-OWNED UNDERGROUND ELECTRICAL CABLE WITHIN THE LIMITS OF THE PROPOSED IMPROVEMENT. THE CONTRACTOR SHALL REQUEST THE ILLINOIS DEPARTMENT OF TRANSPORTATION IN OTTAWA (815-434-8417) TO LOCATE THE UNDERGROUND FACILITIES, PROVIDING A MINIMUM OF 72 HOURS NOTICE. THE DEPARTMENT IS NOT A MEMBER OF THE JOINT UTILITY LOCATING INFORMATION FOR EXCAVATORS (JULIE) SYSTEM.

ALL DAMAGE TO DEPARTMENT OWNED UNDERGROUND FACILITIES, CAUSED BY THE CONTRACTOR SHALL BE REPAIRED TO THE SATISFACTION OF THE DEPARTMENT AT THE CONTRACTOR'S EXPENSE. THIS SHALL INCLUDE ALL TEMPORARY REPAIRS REQUIRED TO KEEP THE FACILITY OPERATIONAL WHILE MATERIAL IS BEING OBTAINED TO MAKE PERMANENT REPAIRS. SPLICING OF ELECTRIC CABLE SHALL NOT BE ALLOWED. ELECTRIC CABLE SHALL BE REPLACED FROM POLE TO POLE OR CONTROLLER.

THE WORK REQUIRED TO CONNECT ANY SEWER TO AN EXISTING DRAINAGE STRUCTURE OR PIPE WILL NOT BE PAID FOR SEPARATELY, BUT SHALL BE CONSIDERED AS INCLUDED IN THE CONTRACT UNIT PRICE BID FOR THE SEWER ITEMS.

THE CONTRACTOR SHALL CONTACT JULIE AT LEAST 48 HOURS PRIOR TO EXCAVATION TO DETERMINE WHICH UTILITIES ARE IN THE AREA.

COMMITMENTS

DISPOSAL OF EXCAVATED MATERIALS. ALL SUITABLE OR UNSUITABLE MATERIALS EXCAVATED DUE TO CONSTRUCTION OPERATIONS SHALL BE DISPOSED OF WITH THE LIMITS OF EXISTING RIGHT OF WAY. DISPOSAL OF EXCAVATED MATERIALS OFF THE RIGHT OF WAY SHALL NOT BE PERMITTED.

EXCAVATED MATERIALS SHALL BE DISPOSED OF AT LOCATIONS DIRECTED BY THE ENGINEER.

ANY SUCH DISPOSAL SHALL NOT CREATE AND UNSIGHTLY OR OBJECTIONABLE APPEARANCE OR DETRACT FROM THE NATURAL TOPOGRAPHIC FEATURES WITHOUT WRITTEN PERMISSION FROM THE ENGINEER.

DATE: 2-5-13

PREPARED BY: Don Bonvil
DISTRICT STUDIES & PLANS ENGINEER

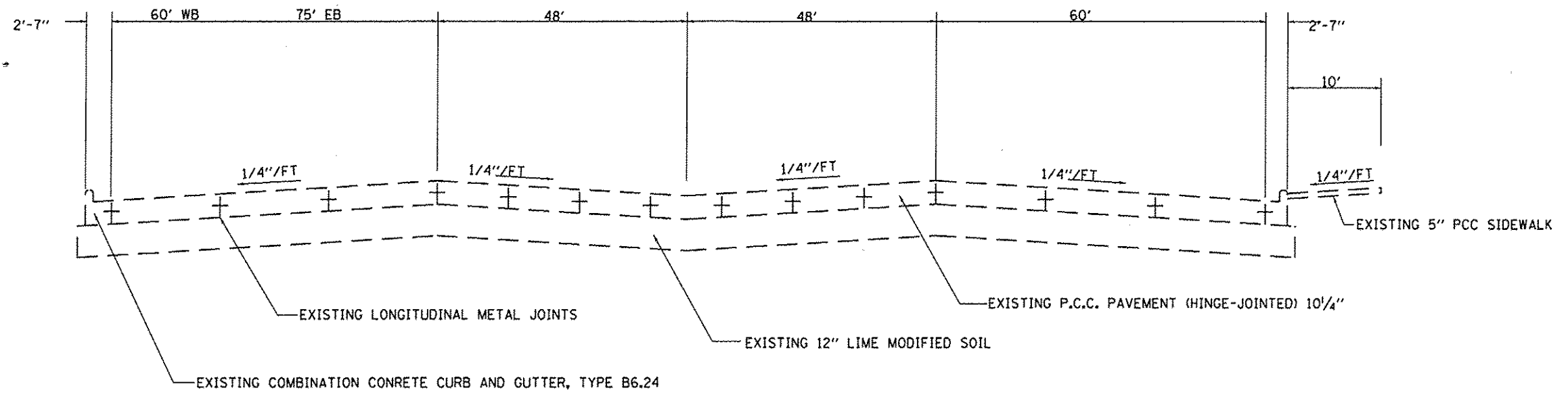
EXAMINED BY: Herbert K. Jones
DISTRICT CONSTRUCTION ENGINEER

Ray J. [Signature]
DISTRICT MATERIALS ENGINEER

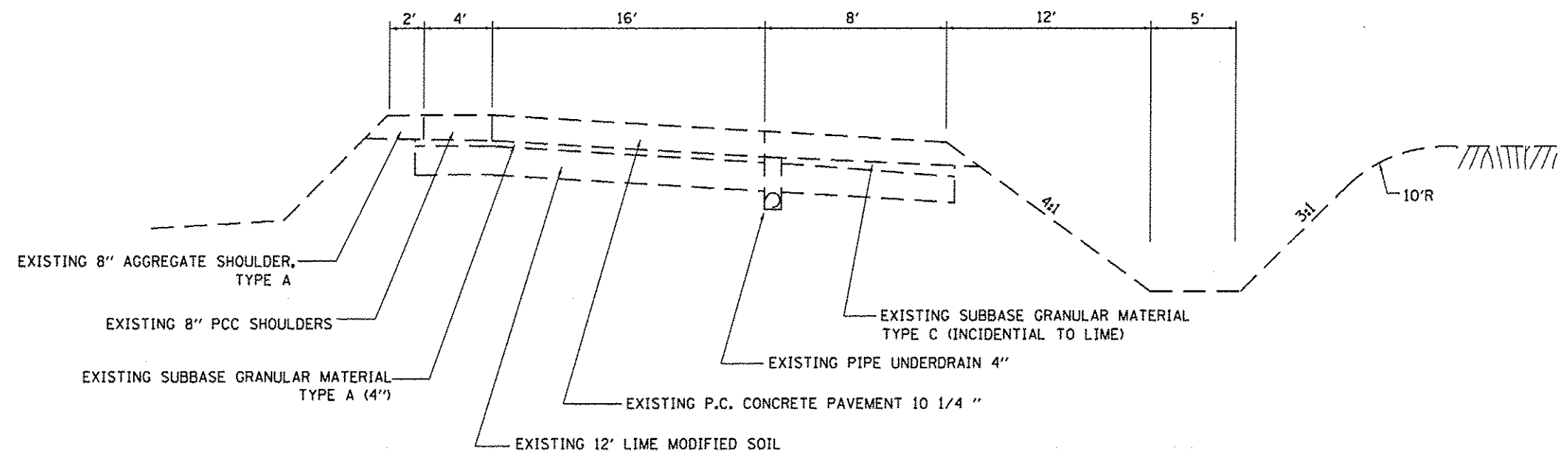
Bruce A. [Signature]
DISTRICT OPERATIONS ENGINEER

FILE NAME =	USER NAME = woodshankr1	DESIGNED - RW	REVISED -	STATE OF ILLINOIS DEPARTMENT OF TRANSPORTATION	GENERAL NOTES	F.A.I. RTE.	SECTION	COUNTY	TOTAL SHEETS	SHEET NO.	
c:\pvt_work\psidot\woodshankr1\d8313137\	66C49-ahd-detail.dgn	DRAWN - RW	REVISED -			80	(06-4)RA-6	BUREAU	13	2	
	PLOT SCALE = 1/8" = 1' / 1"	CHECKED -	REVISED -			CONTRACT NO. 66C49		ILLINOIS FED. AID PROJECT			
	PLOT DATE = 12/4/2012	DATE -	REVISED -			SCALE:	SHEET NO. 1 OF 1 SHEETS	STA.	TO STA.		

CODE NO.	ITEM	UNIT	CONSTR. CODE
			STATE FUNDS
			100% STATE
			ROADWAY
			0044
			RURAL
20201200	REMOVAL AND DISPOSAL OF UNSUITABLE MATERIAL	CU YD	2097
28200200	FILTER FABRIC	SQ YD	224
30300124	AGGREGATE SUBGRADE ^{IMPROVEMENT} 24"	SQ YD	2097
42000506	PORTLAND CEMENT CONCRETE PAVEMENT 10 1/4" (JOINTED)	SQ YD	3025
42001200	PAVEMENT FABRIC	SQ YD	3025
42100305	CONTINUOUSLY REINFORCED PORTLAND CEMENT CONCRETE PAVEMENT 10 1/4"	SQ YD	121
42100615	PAVEMENT REINFORCEMENT	SQ YD	121
42400200	PORTLAND CEMENT CONCRETE SIDEWALK 5 INCH	SQ FT	2276
42400800	DETECTABLE WARNINGS	SQ FT	226
44000100	PAVEMENT REMOVAL	SQ YD	3146
44000500	COMBINATION CURB AND GUTTER REMOVAL	FOOT	211
44000600	SIDEWALK REMOVAL	SQ FT	2450
550A0050	STORM SEWER, CLASS A, TYPE 1, 12"	FOOT	30
55100500	STORM SEWER REMOVAL 12"	FOOT	37
59300100	CONTROLLED LOW-STRENGTH MATERIAL	CU YD	20
60107600	PIPE UNDRDRAINS 4"	FOOT	155
60607500	COMBINATION CONCRETE CURB AND GUTTER, TYPE B-9.24 (ABUTTING EXISTING PAVEMENT)	FOOT	211
67100100	MOBILIZATION	L SUM	1
70102640	TRAFFIC CONTROL AND PROTECTION, STANDARD 701801	L SUM	1
X0326340	PIPE UNDERDRAIN BACKFILL, SPECIAL	TON	160
X6040205	FRAME AND LIDS, SPECIAL	EACH	15
X7010216	TRAFFIC CONTROL AND PROTECTION, (SPECIAL)	L SUM	1
Z0018600	DRAINAGE STRUCTURES TO BE RECONSTRUCTED	EACH	2
Z0018900	DRILL AND GROUT DOWEL BARS	EACH	212
Z0018911	DRILL AND GROUT #6 TIE BARS	EACH	92

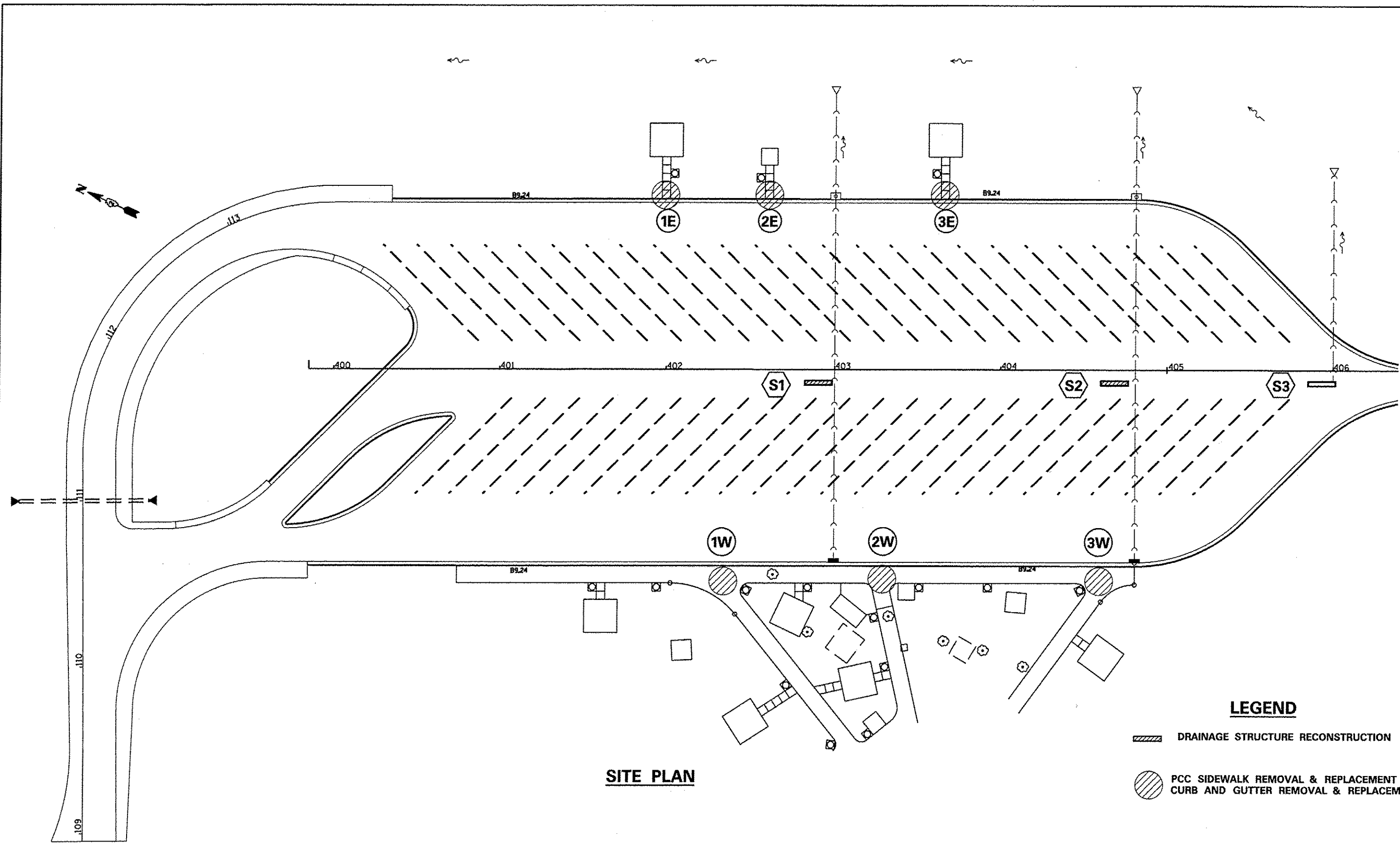


**WESTBOUND REST AREA
TRUCK PARKING**





WESTBOUND REST AREA RAMPS

FILE NAME =	USER NAME = woodshankr1	DESIGNED - RW	REVISED -	STATE OF ILLINOIS DEPARTMENT OF TRANSPORTATION	TYPICAL SECTIONS			P.A.I. RTE.	SECTION	COUNTY	TOTAL SHEETS	SHEET NO.
c:\pwwork\pwwork\woodshankr1\d8213137\066C49-ehc-details.dgn	DRAWN - RW	REVISED -	80					(06-4)RA-6	BUREAU	13	4	
PLOT SCALE = 1/8" = 1' / in.	CHECKED -	REVISED -	CONTRACT NO. 66C49				ILLINOIS FED. AID PROJECT					
PLOT DATE = 12/4/2012	DATE -	REVISED -	SCALE:		SHEET NO. 1 OF 1 SHEETS	STA.	TO STA.					



SITE PLAN

LEGEND

-  DRAINAGE STRUCTURE RECONSTRUCTION
-  PCC SIDEWALK REMOVAL & REPLACEMENT
CURB AND GUTTER REMOVAL & REPLACEMENT

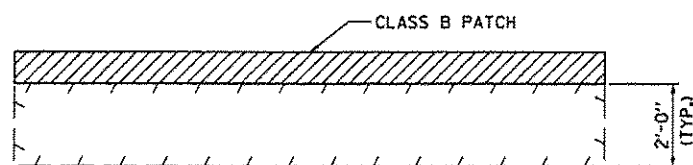
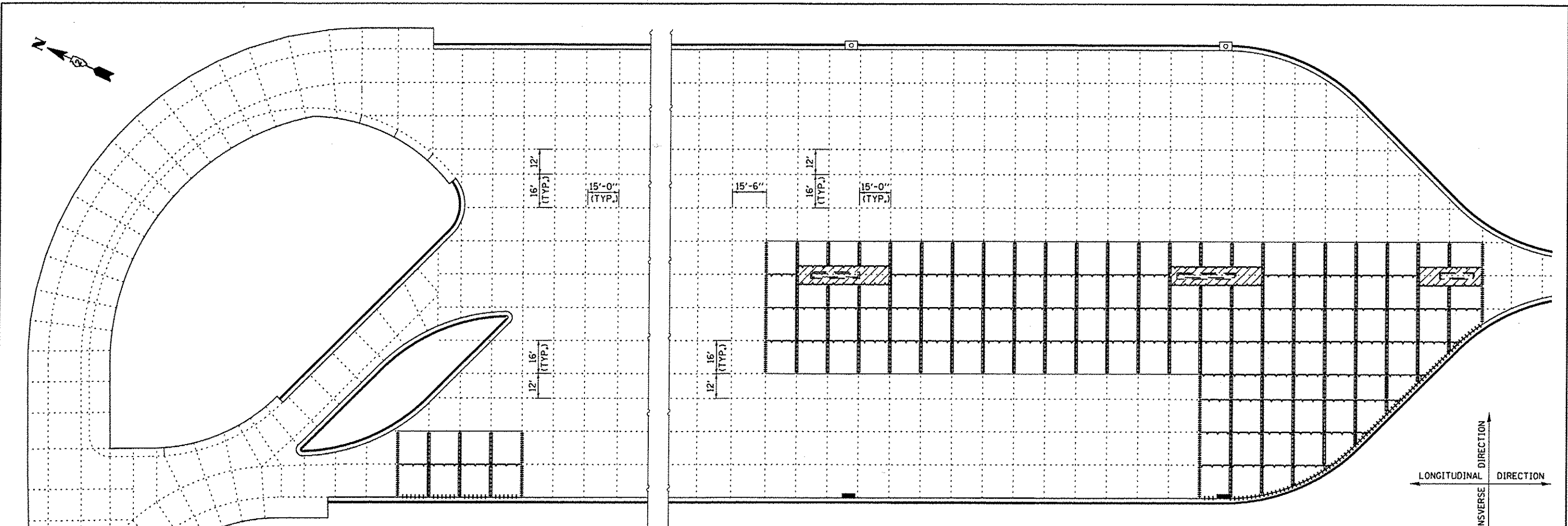
FILE NAME =	USER NAME = woodshankr1	DESIGNED - RW	REVISED -
c:\pwork\pwork\woodshankr1\d8313137\66649-ahh-details.dgn		DRAWN - RW	REVISED -
		CHECKED -	REVISED -
		DATE -	REVISED -

STATE OF ILLINOIS
DEPARTMENT OF TRANSPORTATION

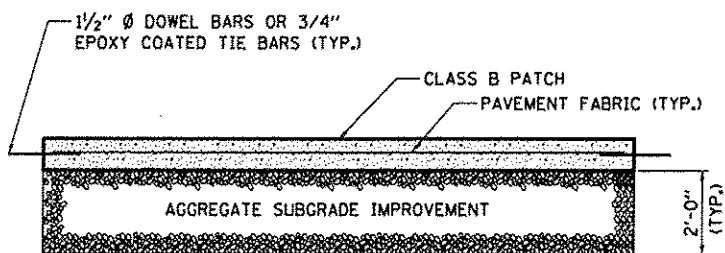
**GENERAL SITE PLAN FOR WESTBOUND
REST AREA - TRUCK LOT**

SCALE: SHEET NO. 1 OF 1 SHEETS STA. TO STA.

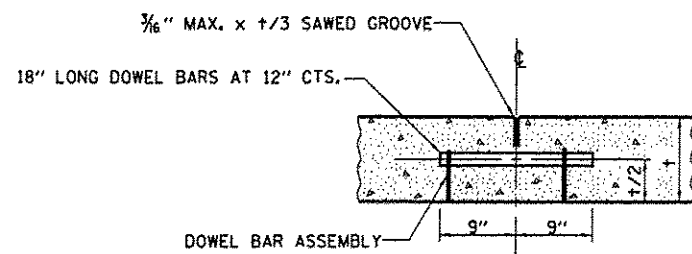
F.A.I. RTE.	SECTION	COUNTY	TOTAL SHEETS	SHEET NO.
80	(06-4)RA-6	BUREAU	13	5
			CONTRACT NO. 66C49	
ILLINOIS FED. AID PROJECT				



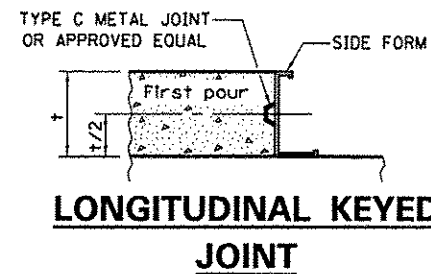
EARTH EXCAVATION DETAILS



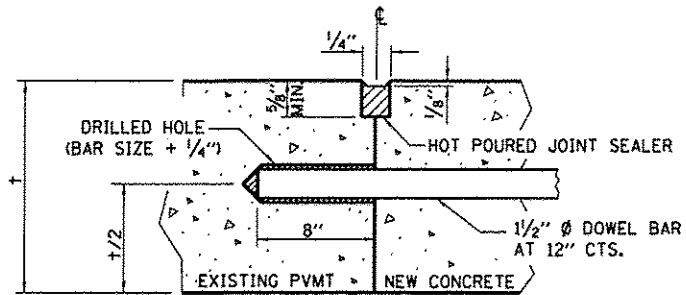
AGGREGATE IMPROVED SUBGRADE



TRANSVERSE CONTRACTION JOINT WITH DOWEL BAR ASSEMBLY



LONGITUDINAL KEYED JOINT



TRANSVERSE CONSTRUCTION JOINT (DOWEL BAR GROUTED IN PLACE)

- LEGEND**
- TRANSVERSE CONTRACTION JOINT WITH DOWEL BAR ASSEMBLIES
 - TRANSVERSE CONSTRUCTION JOINT
 - #6x24" EPOXY COATED TIE BAR AT 24" CTS. DRILL AND GROUT INTO NEW OR EXISTING CONCRETE CURB AND GUTTER.
 - EXISTING CONCRETE PANEL JOINT
 - LONGITUDINAL KEYED JOINT

GENERAL NOTES

ALL PATCHING SHALL BE ACCORDING TO STANDARD 442101 EXCEPT AS NOTED.

HATCHED AREAS REPRESENT CONTINUOUSLY REINFORCED CONCRETE PAVEMENT, ACCORDING TO SECTION 421 OF THE STANDARD SPECIFICATIONS, STANDARDS 421001 AND 421101.

DOWEL BAR ASSEMBLIES SHALL BE ORDERED FULL LENGTH AND CUT TO FIT EXISTING PANEL JOINTS.

FILE NAME =	USER NAME = woodshankr1	DESIGNED - RW	REVISED -
c:\pvc\work\pvc\dot\woodshankr1\08313137\066C49-sht-details.dgn		DRAWN - RW	REVISED -
PLOT SCALE = 100:1 @ 1/4" = 1'-0"		CHECKED -	REVISED -
PLOT DATE = 2/5/2013		DATE -	REVISED -

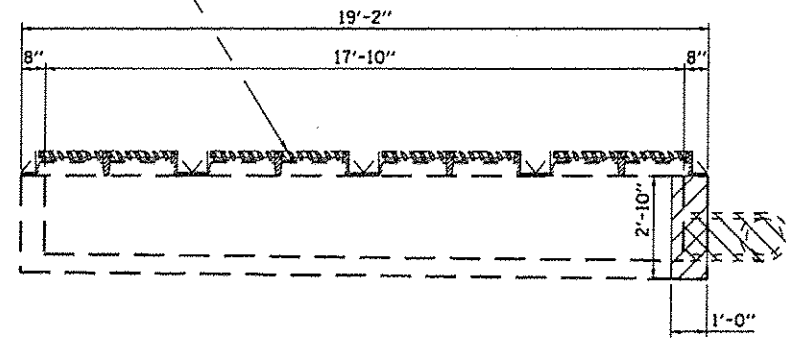
STATE OF ILLINOIS
DEPARTMENT OF TRANSPORTATION

SITE PLAN - TRUCK LOT PATCHING

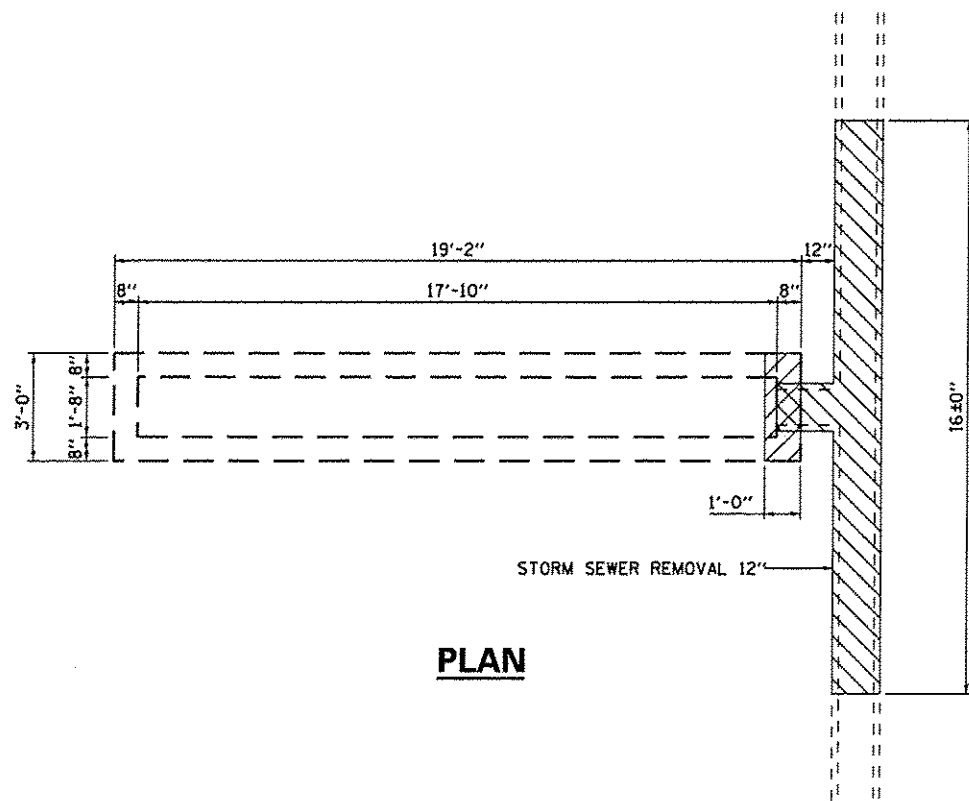
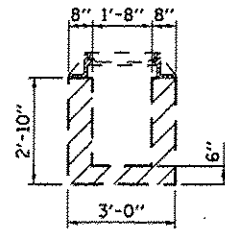
SCALE: SHEET NO. 1 OF 1 SHEETS STA. TO STA.

F.A.I. RTE.	SECTION	COUNTY	TOTAL SHEETS	SHEET NO.
80	(06-4)RA-6	BUREAU	13	6
CONTRACT NO. 66C49			ILLINOIS FED. AID PROJECT	

EXISTING FRAME AND GRATES SHALL BE REMOVED, CLEANED AND INCORPORATED INTO THE NEW CONSTRUCTION



ELEVATION



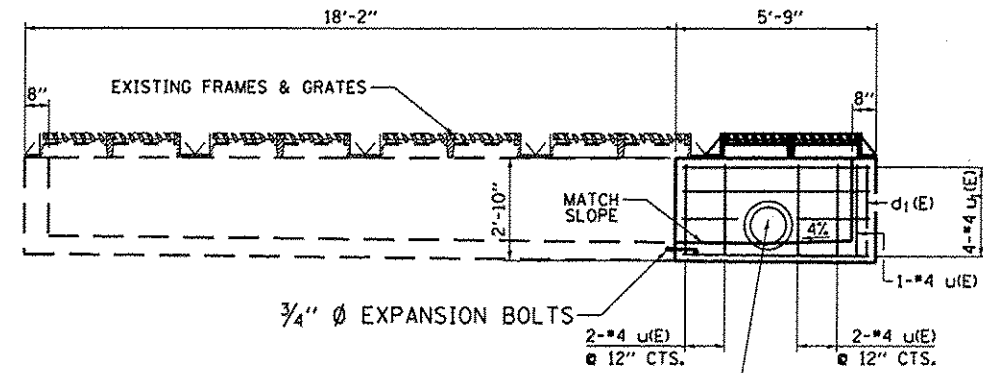
PLAN

STORM SEWER REMOVAL 12"

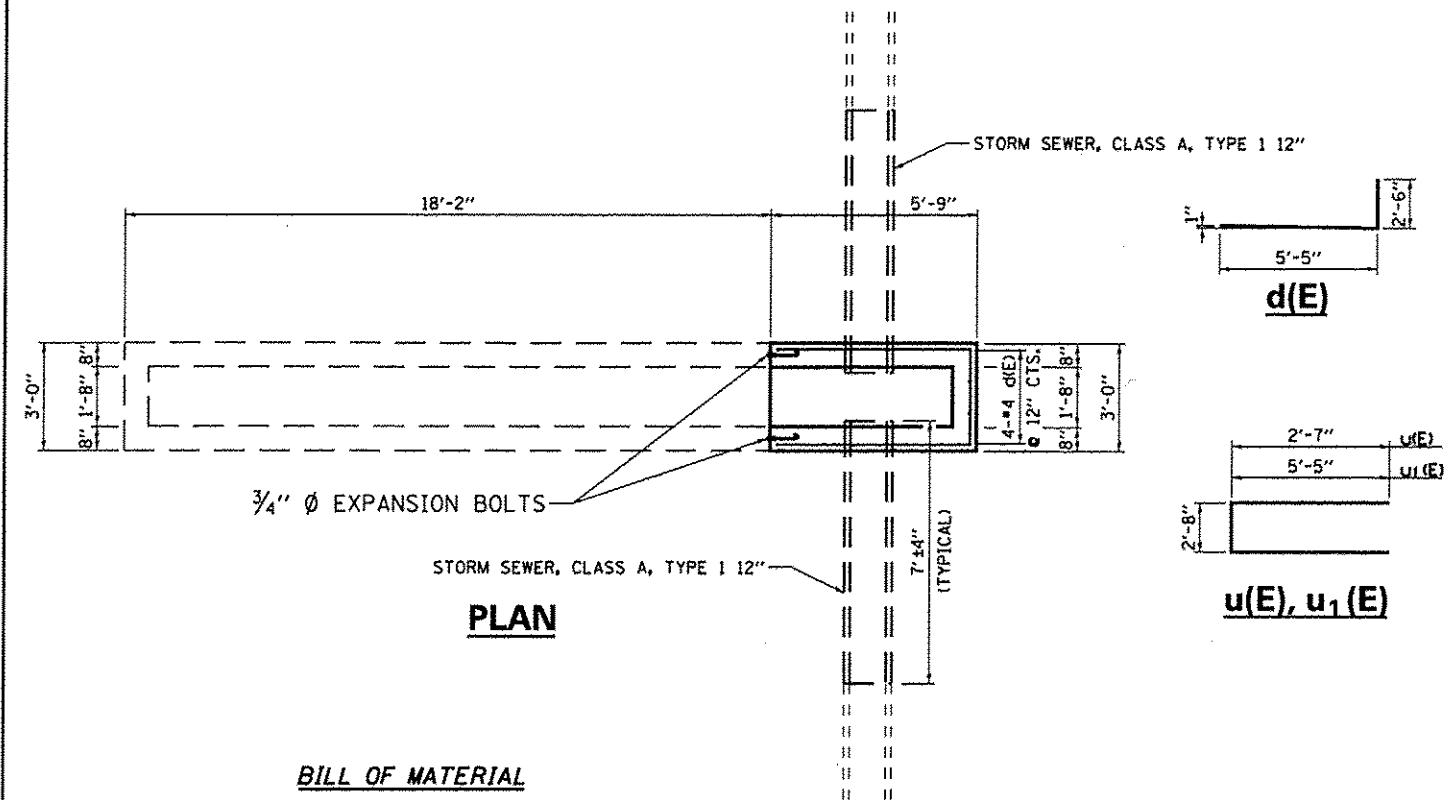
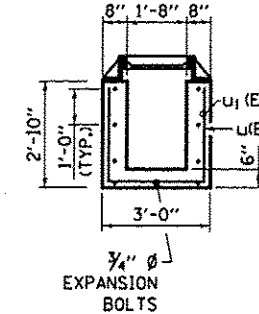
CONCRETE REMOVAL

EXISTING

NOTE: CUT $u_1(E)$ BARS TO MISS STORM SEWER



ELEVATION



PLAN

$d(E)$

$u(E), u_1(E)$

BILL OF MATERIAL

BAR	NO.	SIZE	LENGTH	SHAPE
$d_1(E)$	4	#4	7'-11"	
$u(E)$	10	#4	7'-10"	
$u_1(E)$	4	#4	13'-6"	
CONCRETE REMOVAL		CU YD	0.2	
CLASS SI CONCRETE		CU YD	1.2	
REINFORCEMENT BARS EPOXY COATED		POUND	120	
$\frac{3}{4}$ " ϕ EXPANSION BOLTS		EACH	9	

QUANTITIES SHOWN ARE FOR INFORMATION ONLY. QUANTITIES SHALL NOT BE PAID FOR SEPARATELY BUT SHALL BE INCLUDED IN THE "DRAINAGE STRUCTURE RECONSTRUCTION" ITEM.

PROPOSED

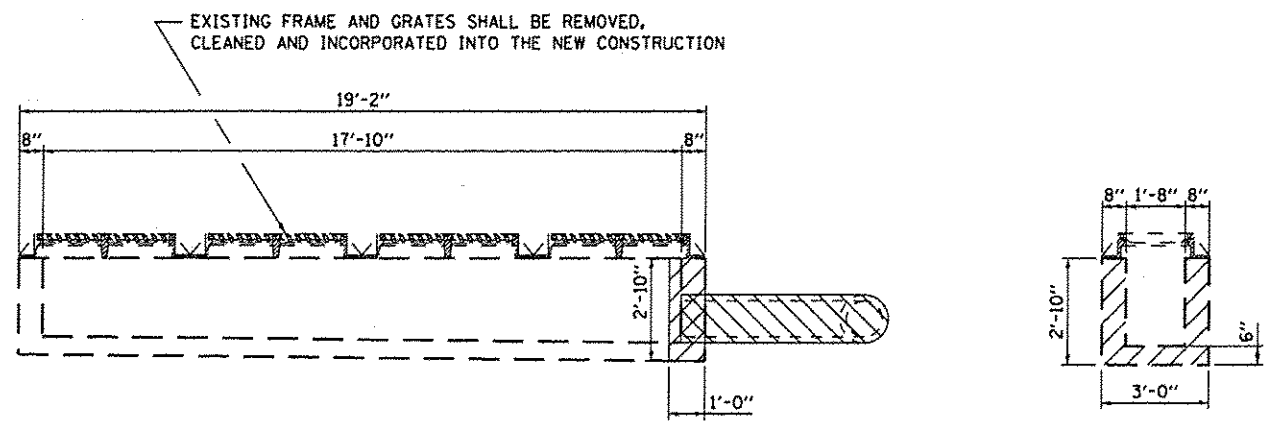
FILE NAME =	USER NAME = woodshenkr1	DESIGNED - RW	REVISED -
at:\pv_work\pvidot\woodshenkr1\08313137\066C49-ehf-details.dgn		DRAWN - RW	REVISED -
		CHECKED -	REVISED -
		DATE -	REVISED -

STATE OF ILLINOIS
DEPARTMENT OF TRANSPORTATION

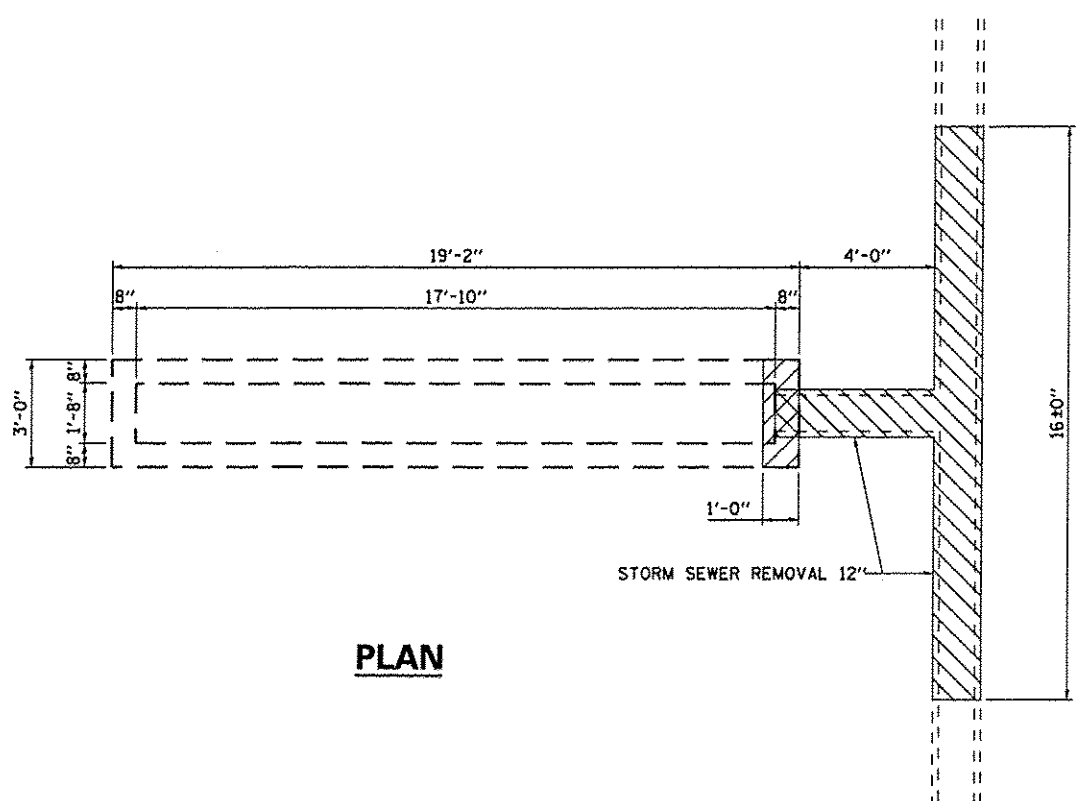
**DRAINAGE STRUCTURE RECONSTRUCTION
FOR STRUCTURE S1**

SCALE: SHEET NO. 1 OF 2 SHEETS STA. TO STA.

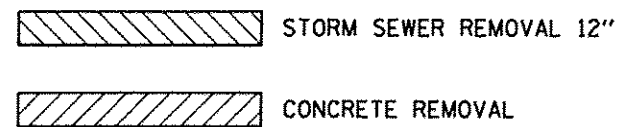
F.A.I. RTE.	SECTION	COUNTY	TOTAL SHEETS	SHEET NO.
80	(06-4)RA-6	BUREAU	13	7
CONTRACT NO. 66C49			ILLINOIS FED. AID PROJECT	



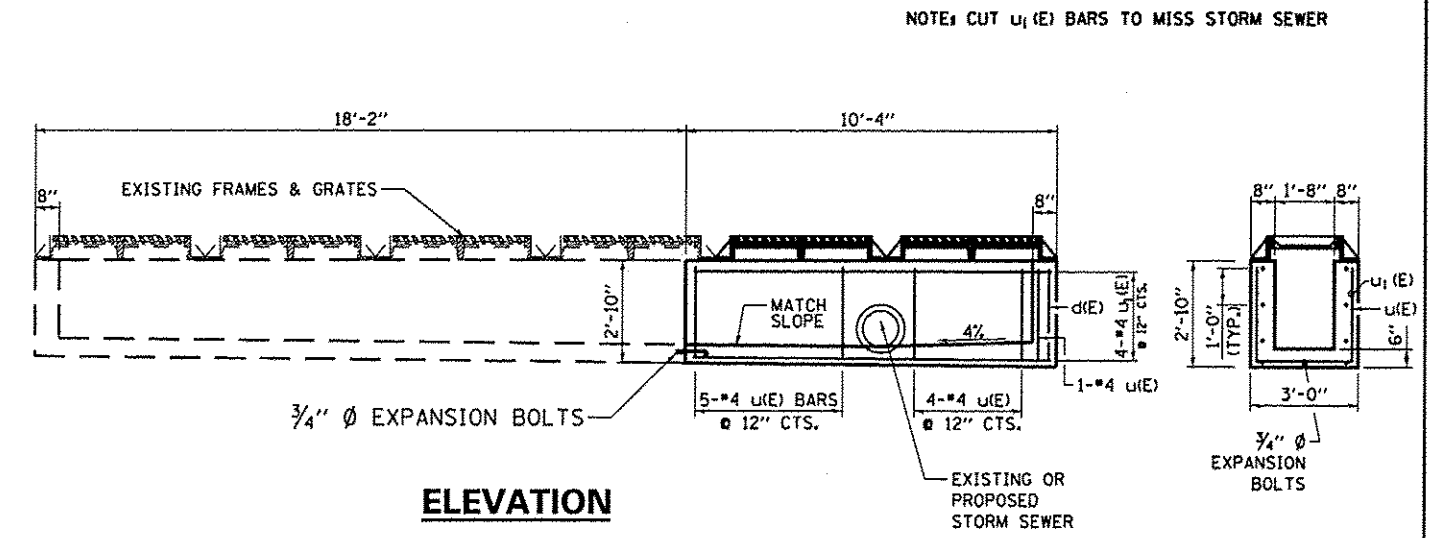
ELEVATION



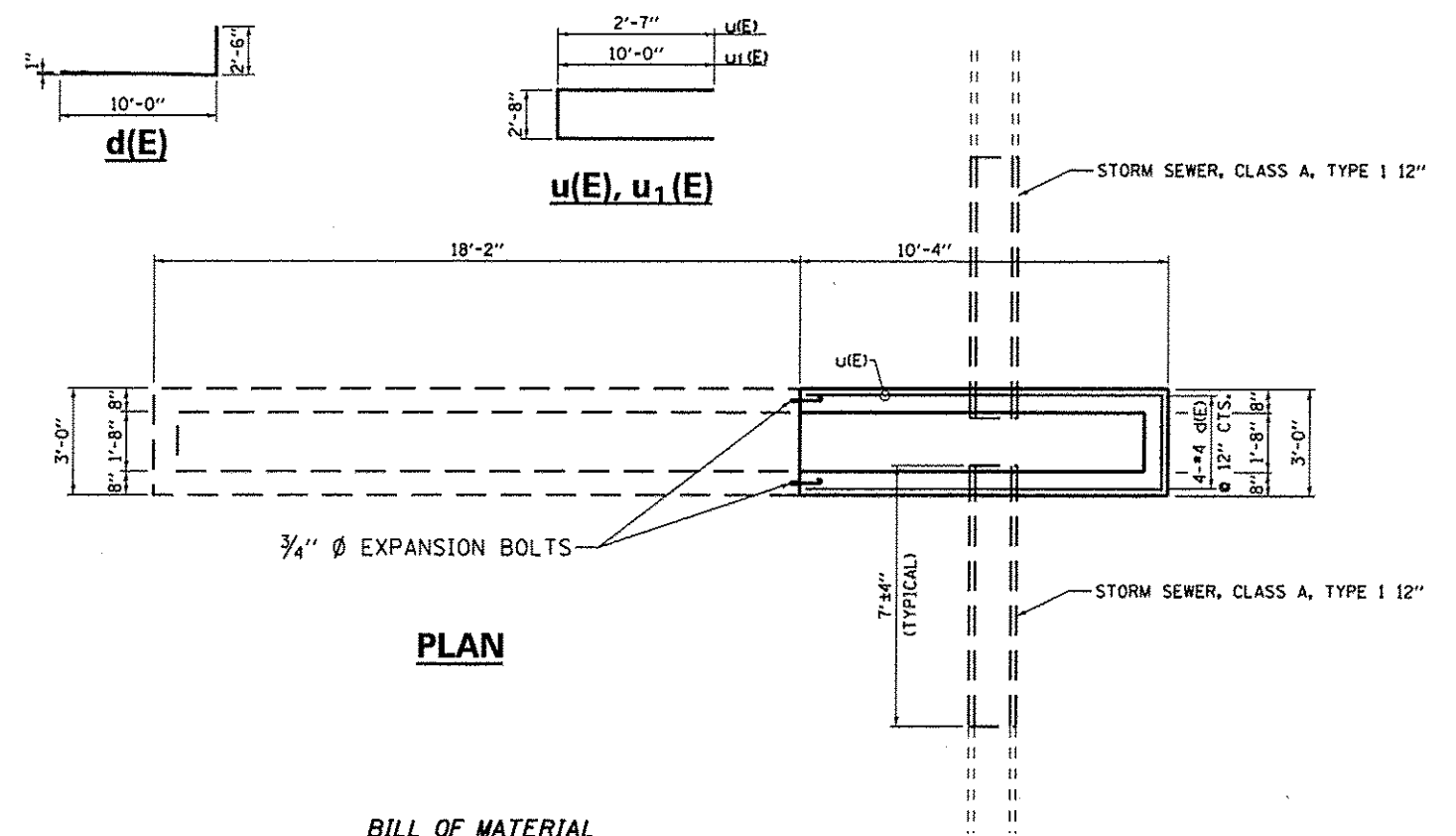
PLAN



EXISTING



ELEVATION



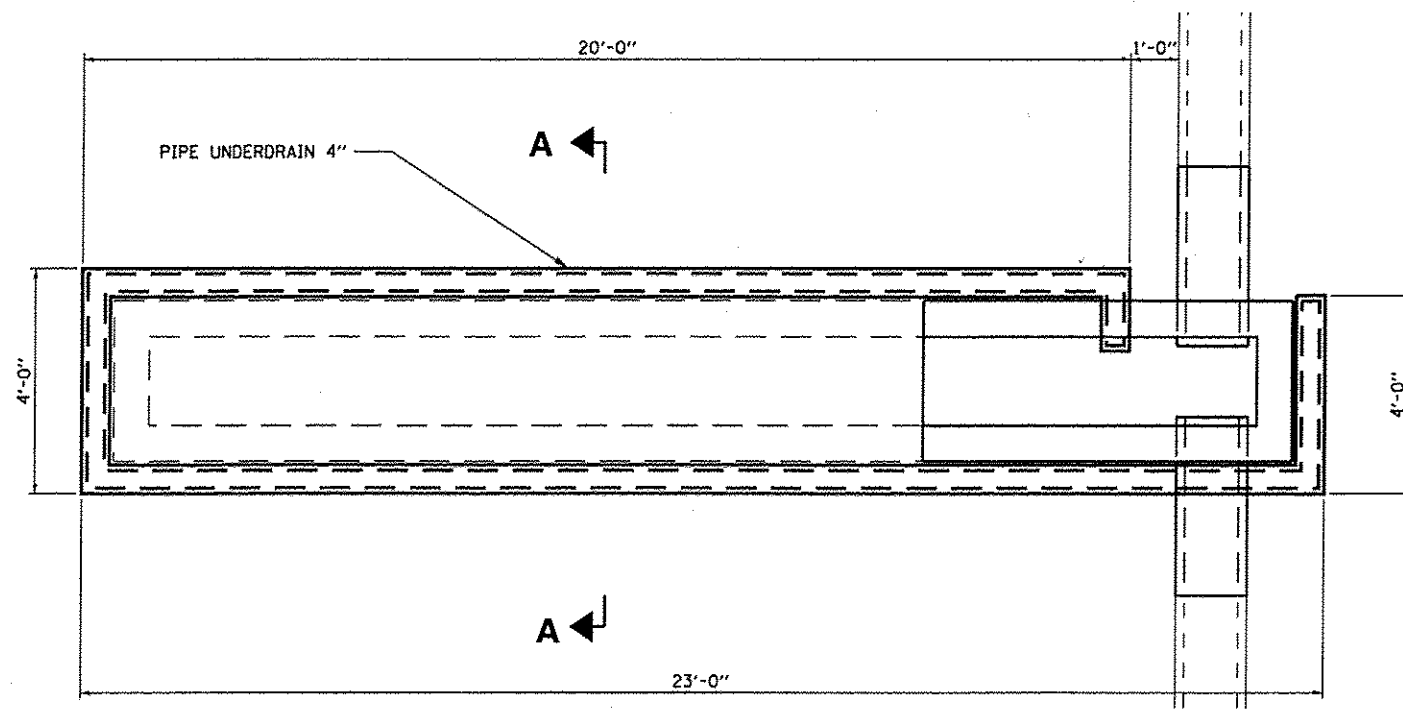
PLAN

BILL OF MATERIAL

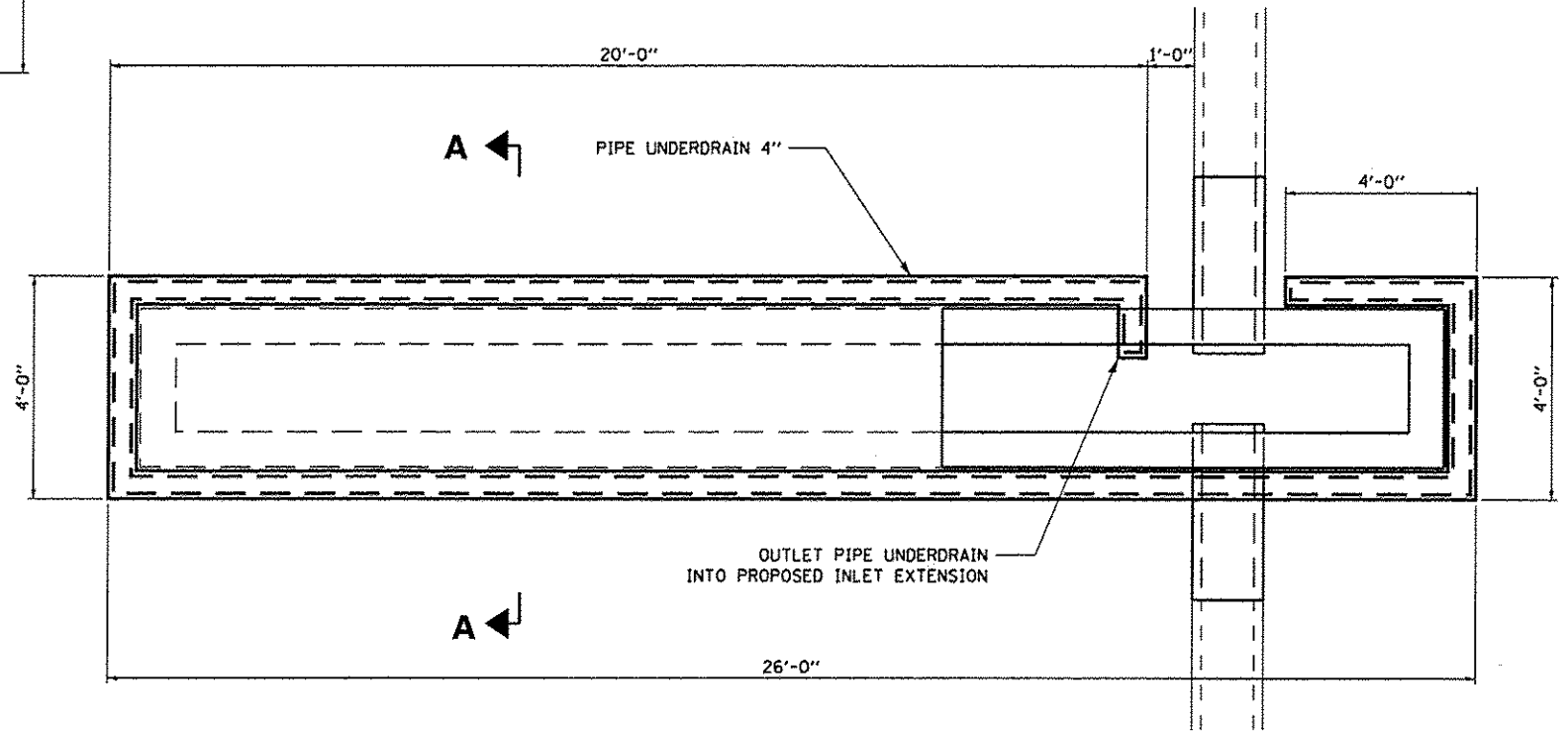
BAR	NO.	SIZE	LENGTH	SHAPE
d(E)	4	#4	12'-6"	□
u(E)	5	#4	7'-10"	□
u1(E)	4	#4	22'-8"	□
CONCRETE REMOVAL			CU YD	0.2
CLASS SI CONCRETE			CU YD	2.1
REINFORCEMENT BARS EPOXY COATED			POUND	150
3/4" EXPANSION BOLTS			EACH	9

QUANTITIES SHOWN ARE FOR INFORMATION ONLY. QUANTITIES SHALL NOT BE PAID FOR SEPARATELY BUT SHALL BE INCLUDED IN THE "DRAINAGE STRUCTURE RECONSTRUCTION" ITEM.

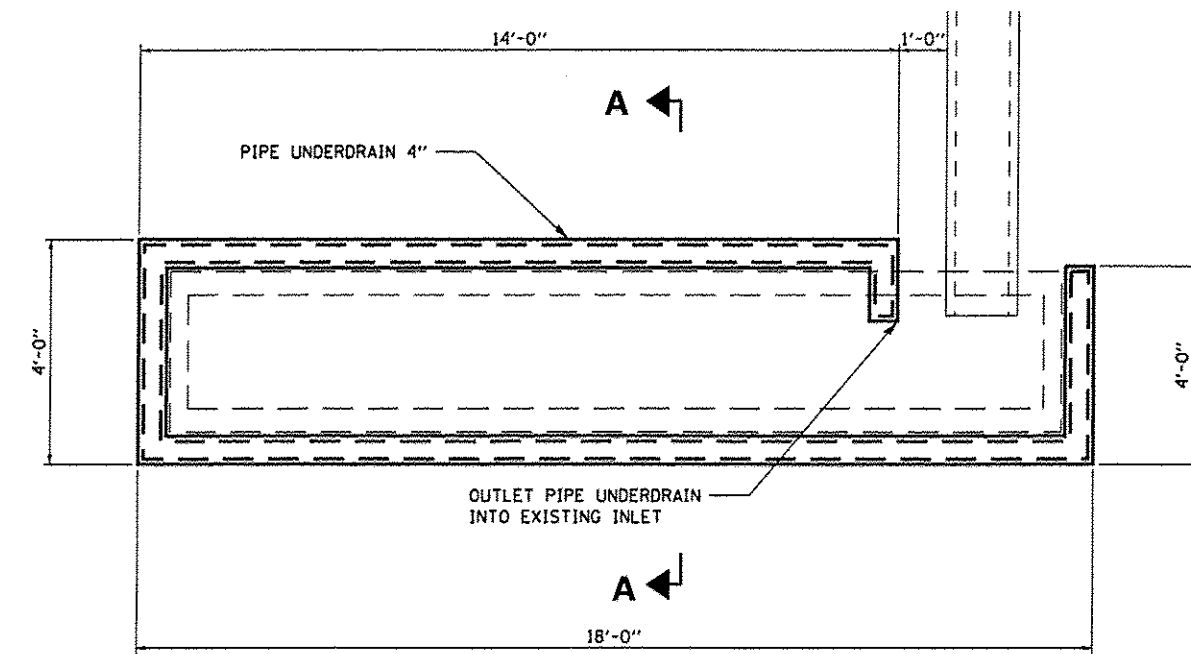
PROPOSED



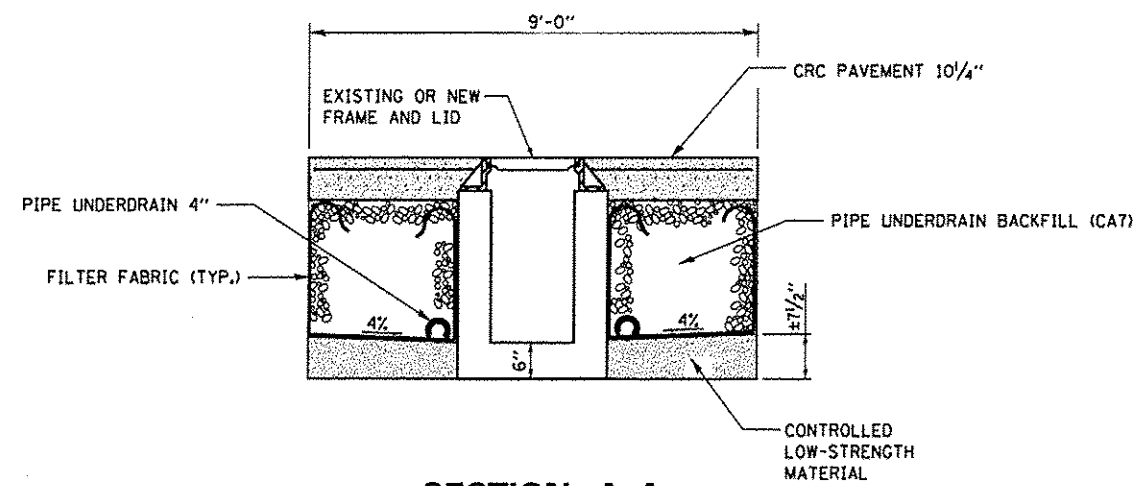
**PLAN
DRAINAGE STRUCTURE S1**



**PLAN
DRAINAGE STRUCTURE S2**



**PLAN
DRAINAGE STRUCTURE S3**



SECTION A-A

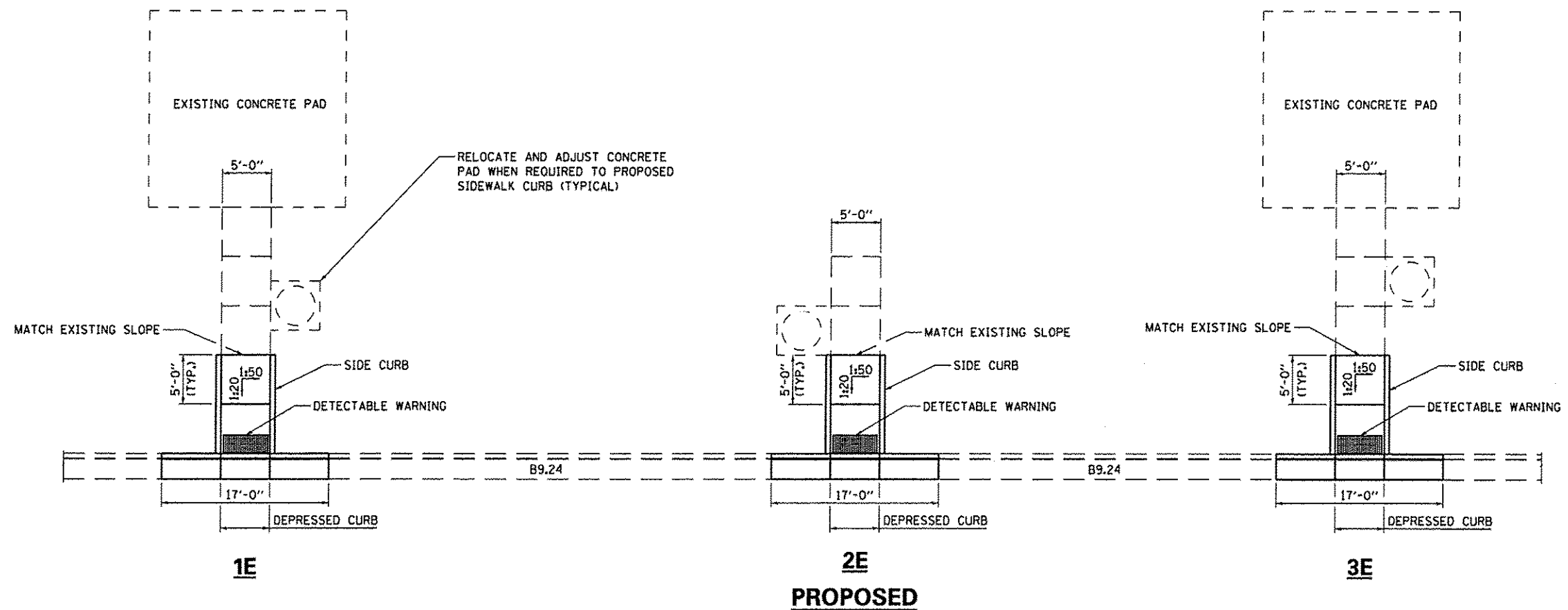
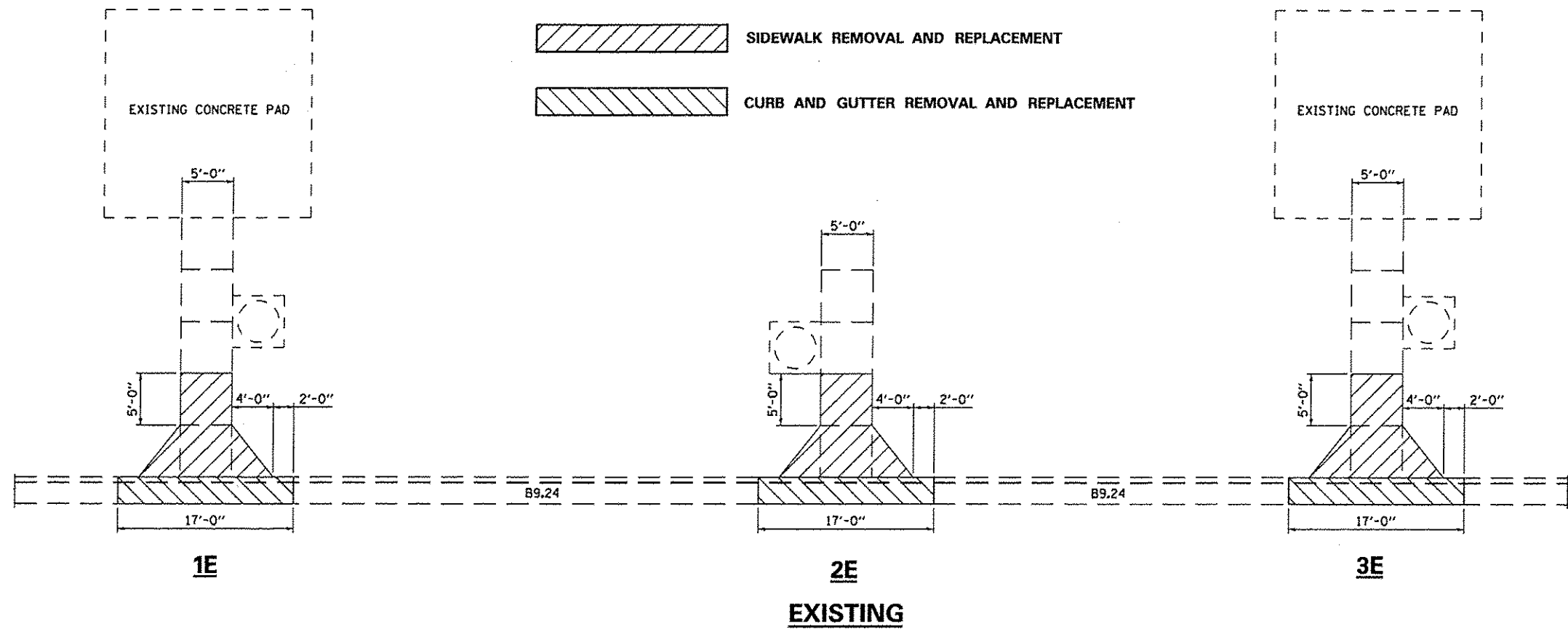
FILE NAME =	USER NAME = woodshankr1	DESIGNED - RW	REVISED -
c:\pwwork\pwwork\woodshankr1\08313137\066C49-ahs-detail.dgn	66C49-ahs-detail.dgn	DRAWN - RW	REVISED -
PLOT SCALE = 1/8" = 1' / in.		CHECKED -	REVISED -
PLOT DATE = 12/11/2012		DATE -	REVISED -

STATE OF ILLINOIS
DEPARTMENT OF TRANSPORTATION



**DRAINAGE STRUCTURE PIPE UNDERDRAIN
FOR STRUCTURE S1**

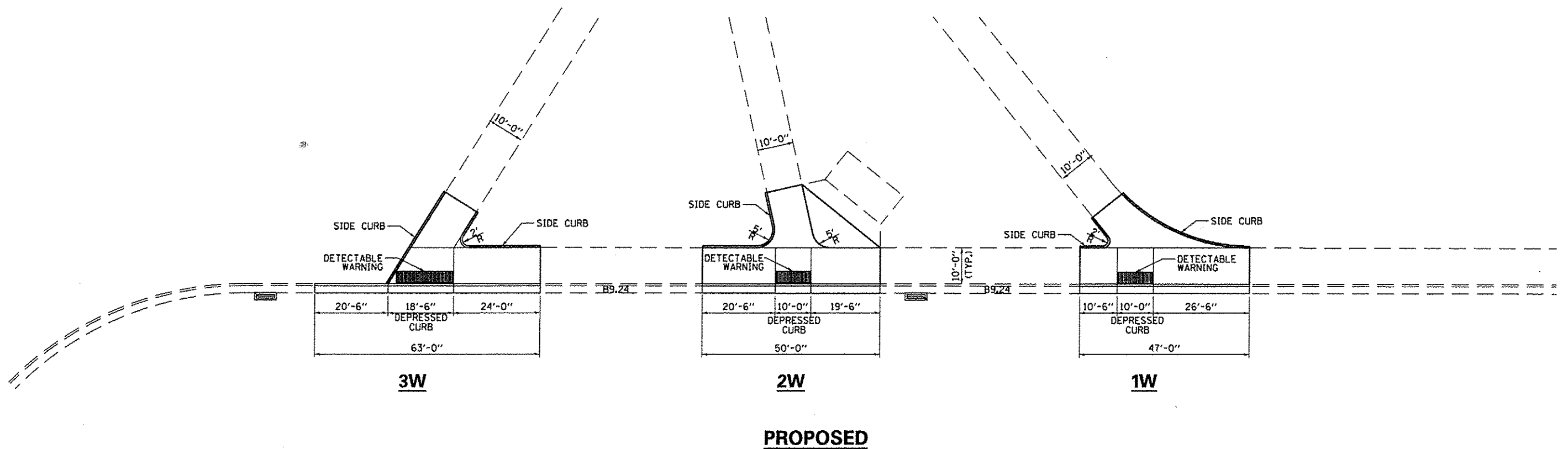
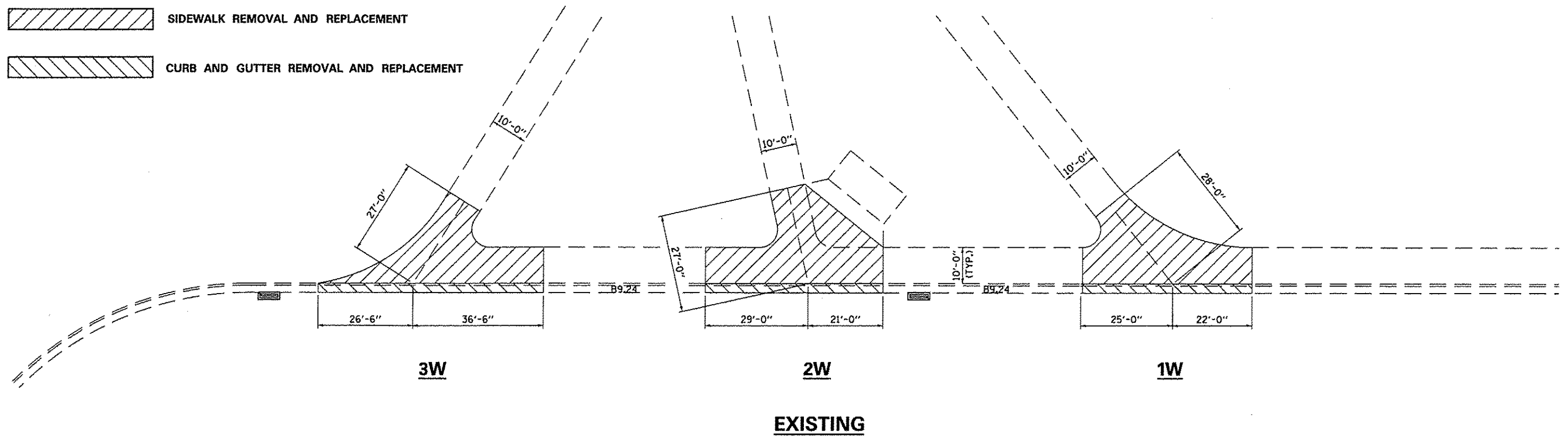
SCALE: SHEET NO. 1 OF 1 SHEETS STA. TO STA.

F.A.I. RTE.	SECTION	COUNTY	TOTAL SHEETS	SHEET NO.
80	(06-4)RA-6	BUREAU	13	9
CONTRACT NO. 66C49			ILLINOIS FED. AID PROJECT	



FILE NAME =	USER NAME = woodshankr1	DESIGNED - RW	REVISED -	STATE OF ILLINOIS DEPARTMENT OF TRANSPORTATION	SIDEWALK DETAILS FOR 1E, 2E, 3E	F.A.I. RTE.	SECTION	COUNTY	TOTAL SHEETS	SHEET NO.	
c:\pwwork\psidat\woodshankr1\d8313137	66C49-ahc-details.dgn	DRAWN - RW	REVISED -			80	(06-4)RA-6	BUREAU	13	10	
	PLOT SCALE = 1/8" = 1' / in.	CHECKED -	REVISED -			CONTRACT NO. 66C49					
	PLOT DATE = 12/4/2012	DATE -	REVISED -			ILLINOIS FED. AID PROJECT					
					SCALE:	SHEET 1 OF 1 SHEETS		STA.	TO STA.		

 **SIDEWALK REMOVAL AND REPLACEMENT**
 **CURB AND GUTTER REMOVAL AND REPLACEMENT**



FILE NAME =
 c:\p\work\p\sidot\woodshankr\148313137\

USER NAME = woodshankr
 666C49-sht-details.dgn
 PLOT SCALE = 1/8" = 1' / in.
 PLOT DATE = 12/1/2012

DESIGNED - RW
 DRAWN - RW
 CHECKED -
 DATE -

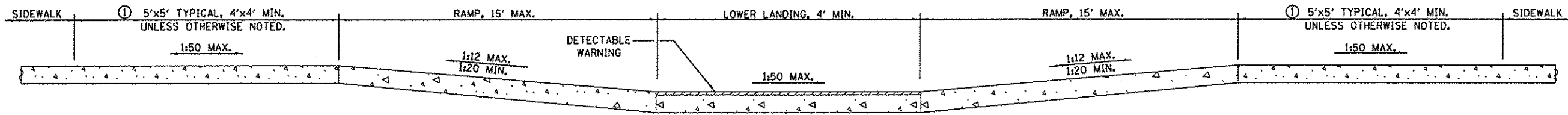
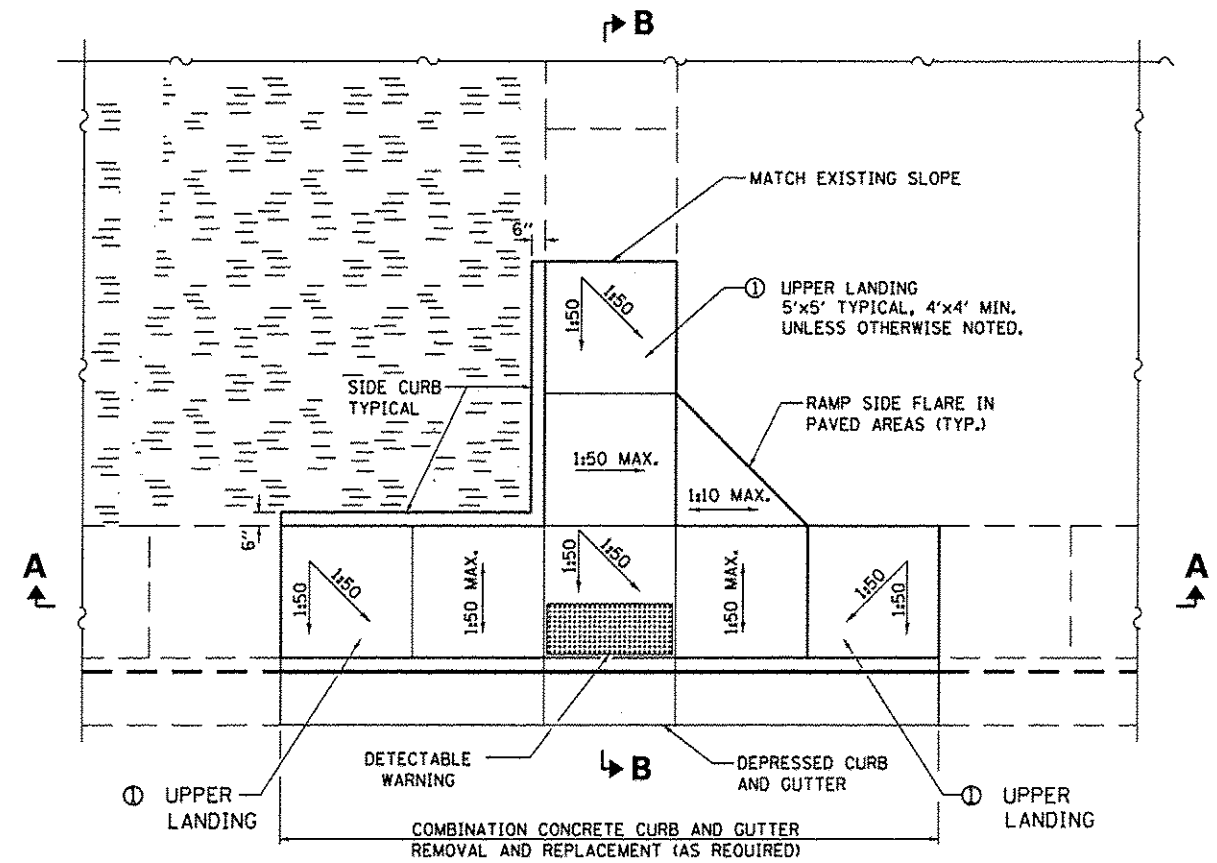
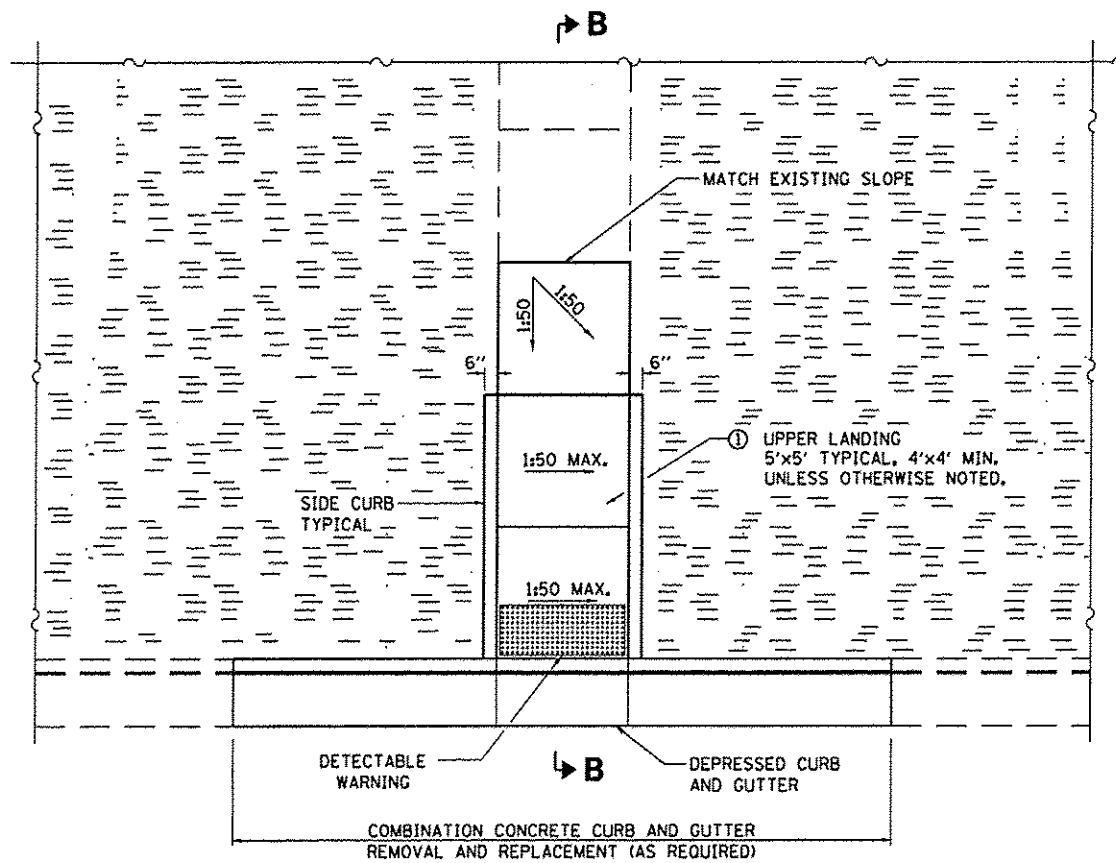
REVISED -
 REVISED -
 REVISED -
 REVISED -

**STATE OF ILLINOIS
 DEPARTMENT OF TRANSPORTATION**

SIDEWALK DETAILS FOR 1W, 2W, 3W

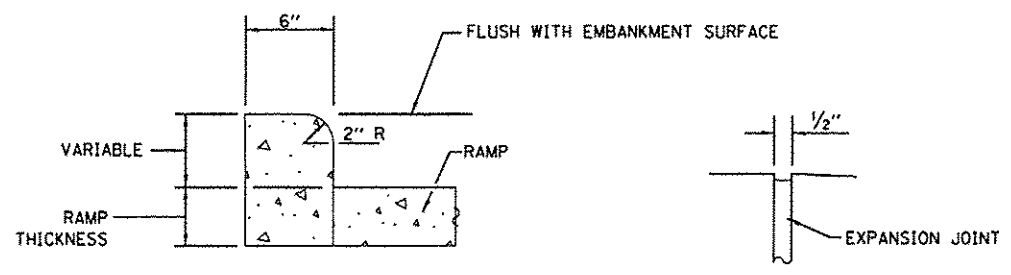
SCALE: SHEET 1 OF 1 SHEETS STA. TO STA.

F.A.I. RTE.	SECTION	COUNTY	TOTAL SHEETS	SHEET NO.
80	(06-4)RA-6	BUREAU	13	11
CONTRACT NO. 66C49			ILLINOIS FED. AID PROJECT	



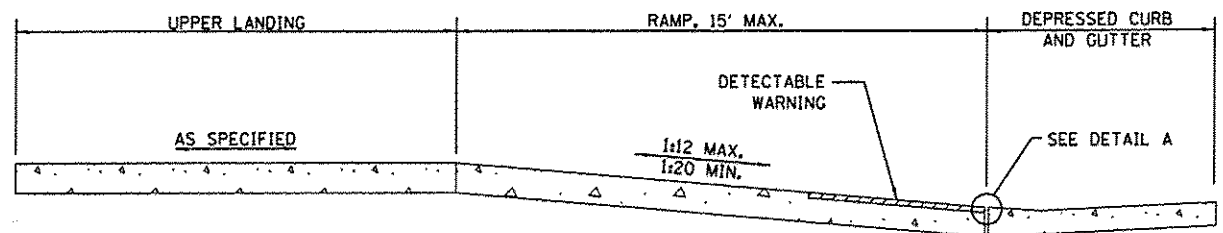
SECTION A-A

① UPPER LANDING(S) NOT REQUIRED FOR RAMP SLOPES FLATTER THAN 1:20



SIDE CURB DETAIL

DETAIL A



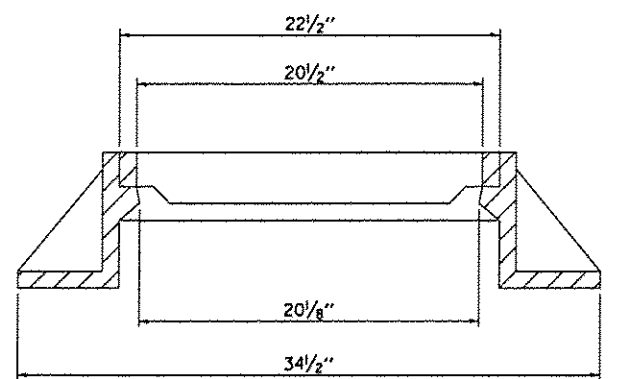
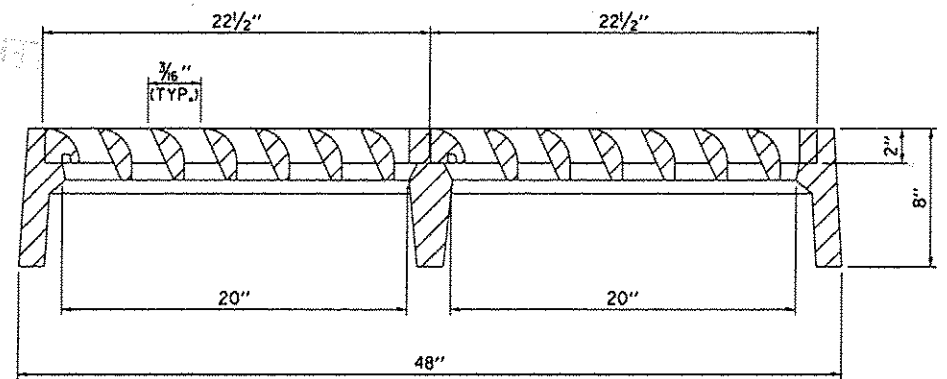
SECTION B-B

GENERAL NOTES

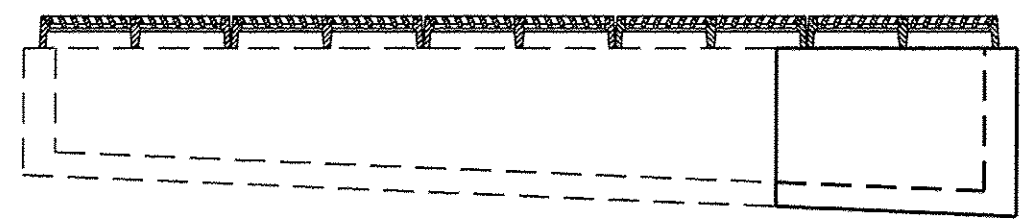
ALL SLOPE RATIOS ARE EXPRESSED AS UNITS OF VERTICAL DISPLACEMENT TO UNITS OF HORIZONTAL DISPLACEMENT (V:H).
SEE STANDARD 606001 FOR DETAILS OF DEPRESSED CURB ADJACENT TO CURB RAMP.

FILE NAME =	USER NAME = woodshenkr1	DESIGNED -	REVISED -	STATE OF ILLINOIS DEPARTMENT OF TRANSPORTATION	MID-BLOCK CURB RAMPS FOR INTERSECTING SIDEWALKS	F.A.I. RTE.	SECTION	COUNTY	TOTAL SHEETS	SHEET NO.	
c:\pwwork\pwwork\woodshenkr1\d09313137.dwg	66649-ahd-details.dgn	DRAWN -	REVISED -			80	(06-4)RA-6	BUREAU	13	12	
	PLOT SCALE = 1/8" = 1' / 1/4"	CHECKED -	REVISED -			CONTRACT NO. 66C49					
#MODELNAME#	PLOT DATE = 12/4/2012	DATE -	REVISED -			ILLINOIS FED. AID PROJECT					

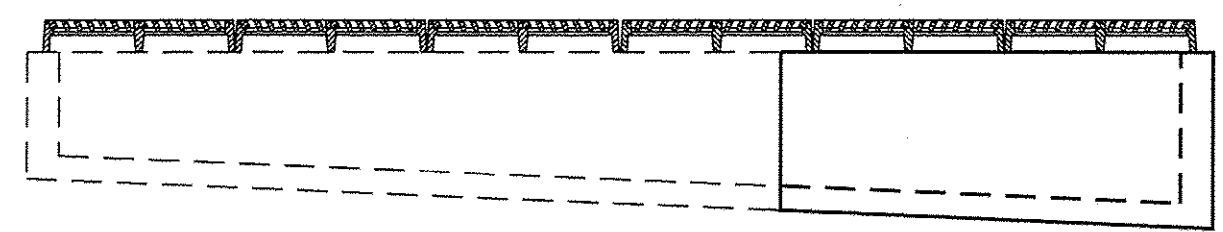
FB 0 0 3012



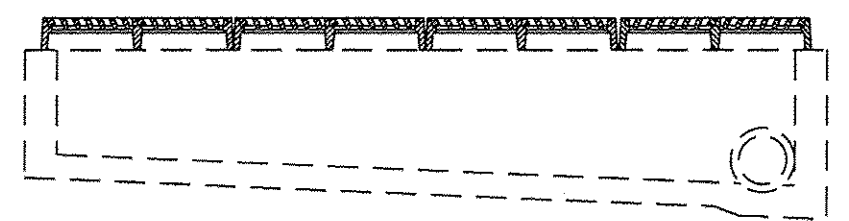
FRAME AND GRATES
NEENAH FRAME AND GRATE NO. R-3527-M OR EQUIVALENT



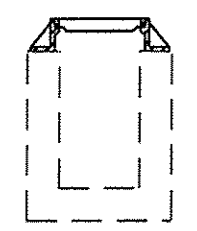
PLAN S1



PLAN S2



PLAN S3



END VIEW
(TYPICAL)

FILE NAME =	USER NAME = woodshankr1	DESIGNED -	REVISED -	STATE OF ILLINOIS DEPARTMENT OF TRANSPORTATION	FRAME AND LID, SPECIAL	F.A.I. RTE.	SECTION	COUNTY	TOTAL SHEETS	SHEET NO.	
c:\pwork\p\p\dot\woodshankr1\d8313137\066C49-rlt-details.dgn	PLOT SCALE = 100.0 1" / in.	DRAWN -	REVISED -			80	(06-4)RA-6	BUREAU	13	13	
#MODELNAME#	PLOT DATE = 12/4/2012	CHECKED -	REVISED -			CONTRACT NO. 66C49		ILLINOIS FED. AID PROJECT			
		DATE -	REVISED -			SCALE:	SHEET 1 OF 1 SHEETS	STA.	TO STA.		