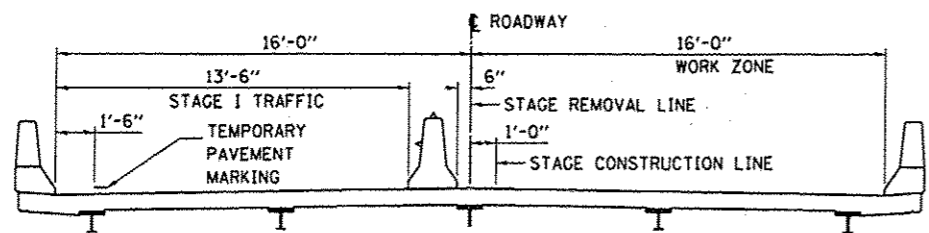
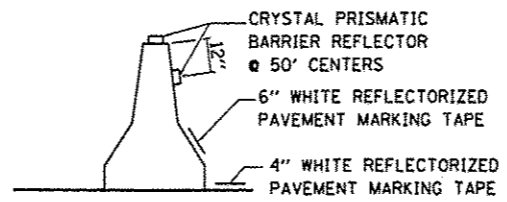


PRE-STAGE CONSTRUCTION

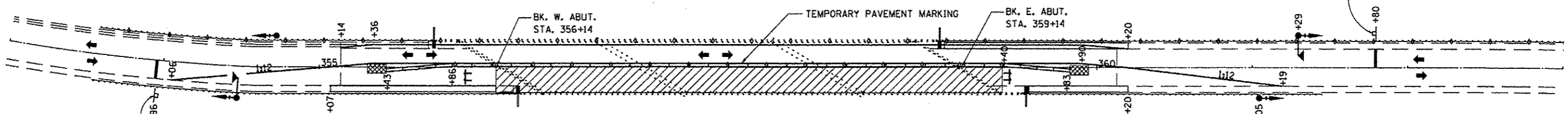
 EARTH EXCAVATION (WIDENING)
HOT-MIX ASPHALT SHOULDER 8"



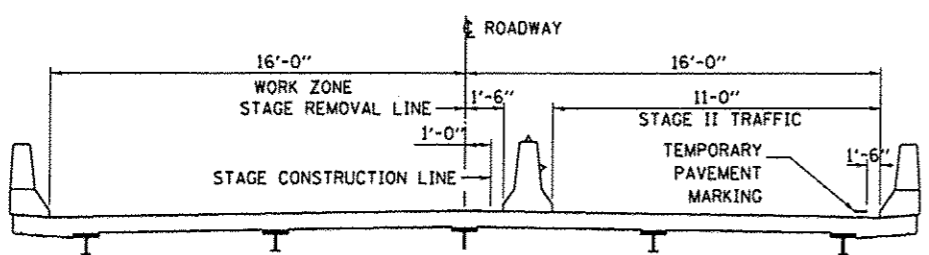
CROSS SECTION
STAGE I
LOOKING EAST



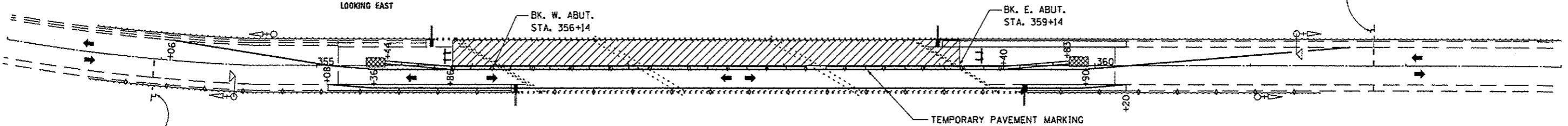
TEMPORARY CONCRETE BARRIER WALL DETAILS



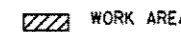
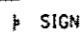
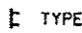
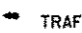
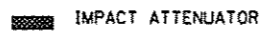
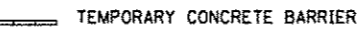

STAGE I CONSTRUCTION



CROSS SECTION
STAGE II
LOOKING EAST



STAGE II CONSTRUCTION

- LEGEND**
-  WORK AREA
 -  SIGN
 -  TYPE III BARRICADE
 -  TRAFFIC SIGNAL WITH BACKPLATE
 -  IMPACT ATTENUATOR
 -  TEMPORARY CONCRETE BARRIER
 -  CRYSTAL, BI-DIRECTIONAL BARRIER WALL/GUARDRAIL MARKER

GENERAL NOTES

TRAFFIC CONTROL AND PROTECTION FOR PRE-STAGE CONSTRUCTION OPERATIONS SHALL BE ACCORDING TO STANDARD 701201.

IN ADDITION TO THE DETAILS SHOWN, TRAFFIC CONTROL AND PROTECTION FOR STAGE I AND STAGE II CONSTRUCTION OPERATIONS SHALL BE ACCORDING TO STANDARD 701321 AND 704001.

WHEN TEMPORARY RUMBLE STRIPS ARE SHOWN ON THE TRAFFIC CONTROL AND PROTECTION STANDARD 701321, THE RUMBLE STRIPS SHALL BE CONSTRUCTED OF THERMOPLASTIC PAVEMENT MARKINGS TO A THICKNESS OF ONE-HALF INCH (1/2").

FILE NAME =	USER NAME = woodshenkr1	DESIGNED - RW	REVISED -	STATE OF ILLINOIS DEPARTMENT OF TRANSPORTATION	STAGING DETAILS FOR STRUCTURE NO. 019-0032	F.A.P. RTE.	SECTION	COUNTY	TOTAL SHEETS	SHEET NO.	
a:\pw\work\p1dat\woodshenkr1\03220292\0366C65-shr-details.dgn		DRAWN - RW	REVISED -			573	(116VB-1-1BR1)	DEKALB	21	6	
PLOT SCALE = 1/80,000' / 1" =		CHECKED -	REVISED -			CONTRACT NO. 66C65		ILLINOIS FED. AID PROJECT			
PLOT DATE = 2/14/2013		DATE -	REVISED -			SCALE:	SHEET NO. 1 OF 1 SHEETS	STA.	TO STA.		