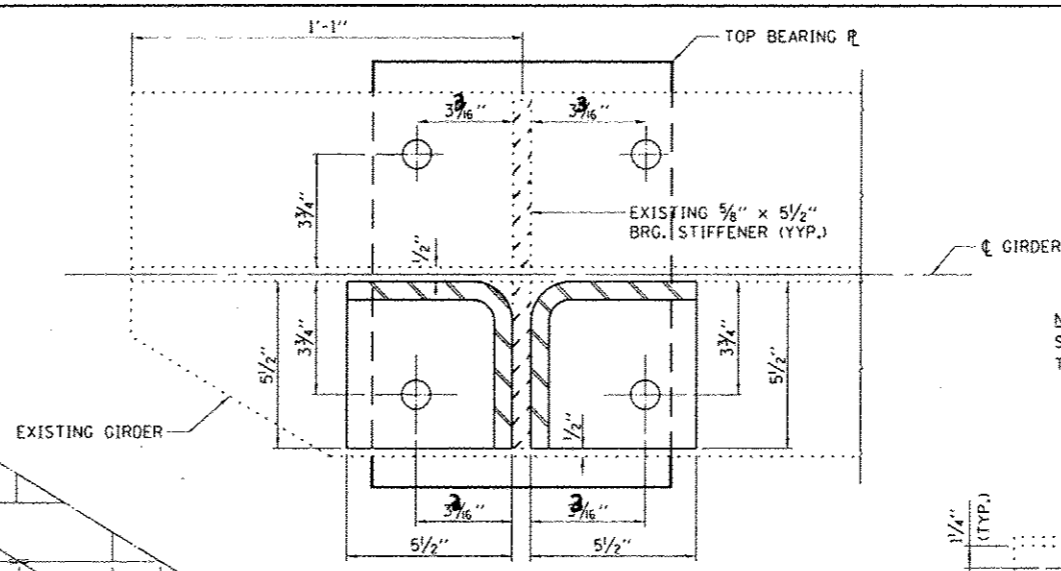
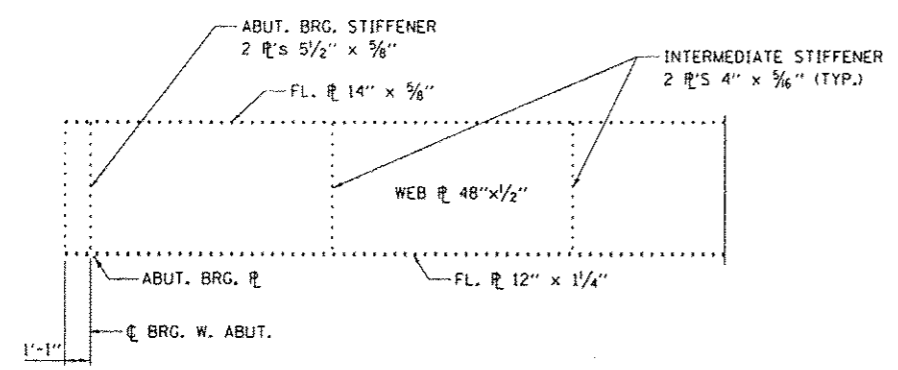


**PARTIAL PLAN**

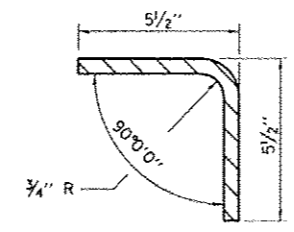


**PLAN AT FASCIA BEAM  
INTERIOR BRG. STIFFENER**

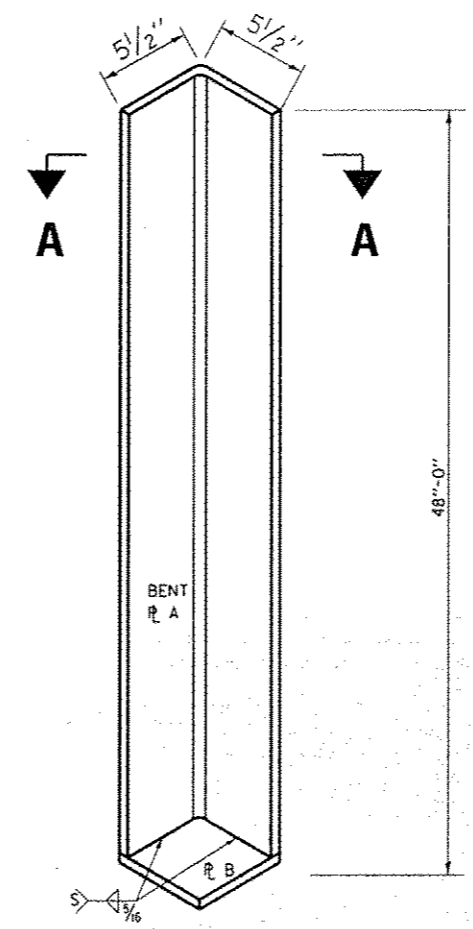
**NOTE:**  
STRUCTURAL STEEL REPAIR MEMBERS DESIGNATED (NTR) SHALL MEET THE CHARPY V-NOTCH IMPACT REQUIREMENTS FOR TEMPERATURE ZONE 2.



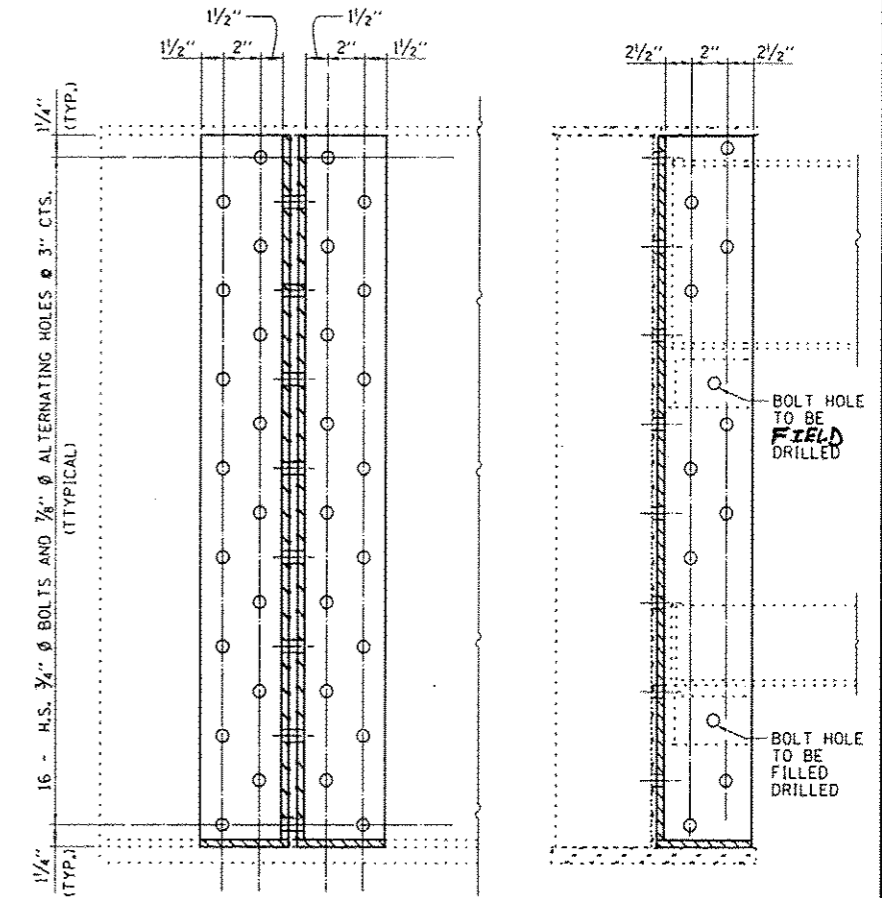
**GIRDER ELEVATION  
INTERIOR FACE**



**SECTION A-A  
12" BENT PLATE (NTR)**

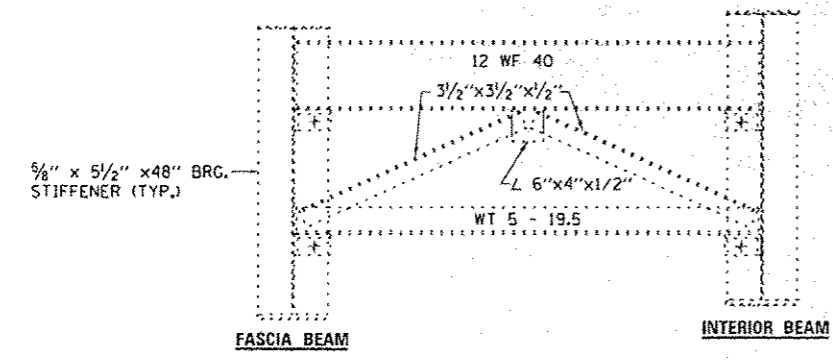


**PLATE ASSEMBLY DETAIL**

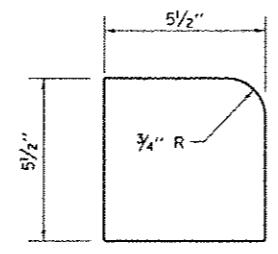


**ELEVATION**

**END ELEVATION**



**CROSS FRAME ELEVATION  
AT W. ABUT.**



**PLATE "B"  
12" PLATE**

**BILL OF MATERIAL**

Item	Unit	Total
STRUCTURAL STEEL REPAIR	POUND	180

**NOTES**  
WHEN EXISTING CROSS FRAMES AND SUPPORT ANGLES REMOVED FOR THE INSTALLATION OF THE STRUCTURAL STEEL REPAIR, THE CROSS FRAMES AND ANGLE SHALL BE REINSTALLED WITH NEW HIGH STRENGTH BOLTS, NUTS AND WASHERS.

EXISTING CROSS FRAMES AND SUPPORT ANGLES SHALL BE USED AS TEMPLATES TO ESTABLISH LOCATIONS FOR NEW BOLT HOLES. COST OF REMOVING, REINSTALLING THE CROSS FRAMES AND ANGLES WHEN REQUIRED AND DRILLING OF NEW BOLT HOLES SHALL BE INCLUDED IN THE COST OF "STRUCTURAL STEEL REPAIR".

THE CONTRACTOR SHALL FURNISH ADDITIONAL 1/2" SHIM PLATES TO COMPENSATE FOR THE DIFFERENTIAL IN DIMENSIONS OF THE EXISTING SUPPORT ANGLE WHEN REINSTALLED. THE EXISTING ANGLE SHALL MAINTAIN FULL BEARING ACROSS THE CONTACT AREA OF THE ANGLE. COST OF FURNISHING AND INSTALLING THE SHIM PLATES SHALL BE INCLUDED IN THE COST OF "STRUCTURAL STEEL REPAIR".