

GENERAL NOTES

Fasteners shall be AASHTO M164 Type 1, mechanically galvanized bolts.
Bolts 7/8 in. φ, holes 5/16 in. φ, unless otherwise noted.

Calculated weight of Structural Steel = 23,360 lbs. (M270 Grade 50)
= 1,550 lbs. (M270 Grade 36)

No field welding is permitted except as specified in the contract documents.

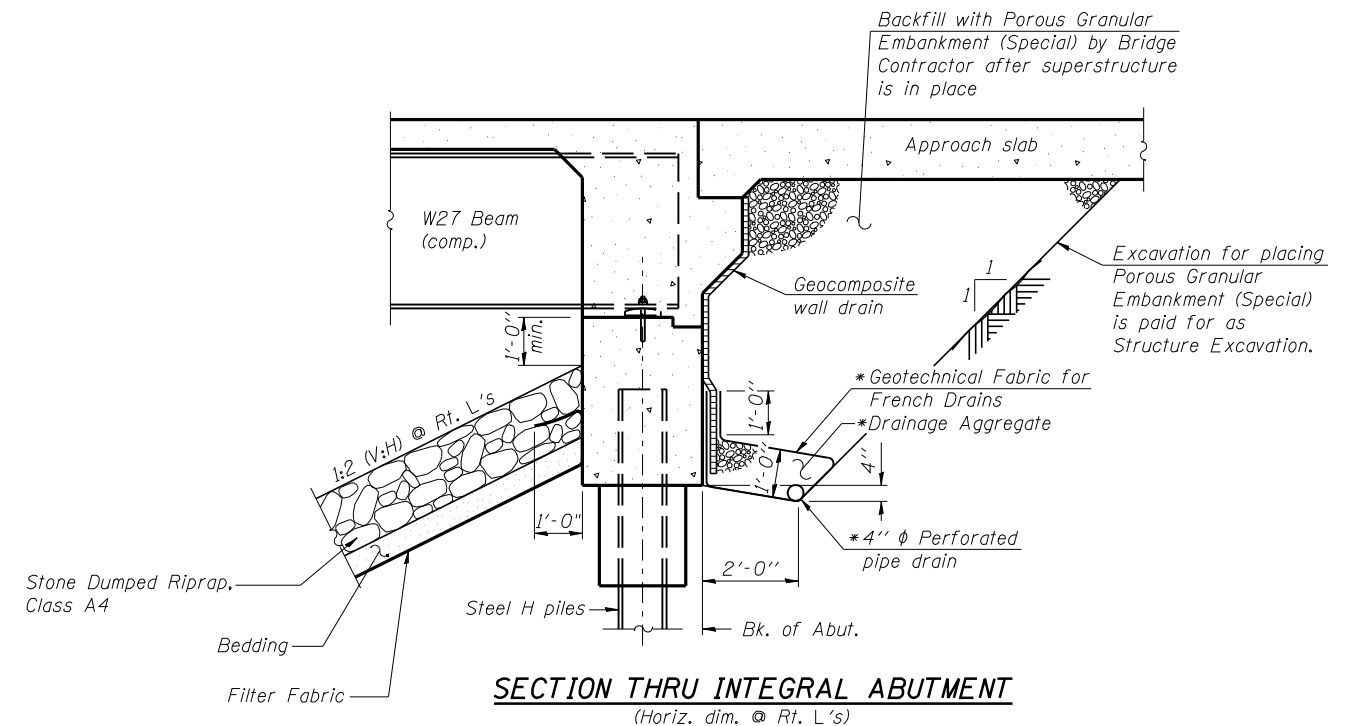
Reinforcement bars designated (E) shall be epoxy coated.

The Inorganic Zinc Rich Primer / Acrylic / Acrylic Paint System shall be used for shop and field painting of new structural steel except where otherwise noted. The color of the final finish coat for all interior steel surfaces shall be gray, Munsell No. 5B 7/1. The color of the final finish coat for the exterior and bottom flange of the fascia beams shall be Reddish Brown, Munsell No 2.5YR 3/4.

Layout of slope protection system may be varied to suit ground conditions in the field as directed by the Engineer.

Excavation behind existing abutment walls shall be performed to balance front and back soil pressure before removing the existing superstructure. The Contractor shall sawcut the upper portion of the existing abutment at the stage removal line before Stage I removal to ensure the remaining portion will not be prematurely damaged.

Slip forming of the parapet is not allowed.



SECTION THRU INTEGRAL ABUTMENT

(Horiz. dim. @ Rt. L's)

* Included in the cost of Pipe Underdrains for Structures, 4".

Note:

All drainage system components shall extend to 2'-0" from the end of each wingwall except an outlet pipe shall extend until intersecting with the side slopes. The pipes shall drain into concrete headwalls. (See Article 601.05 of the Standard Specifications and Highway Standard 601101).

STATION 398+10.53
BUILT 20__ BY
STATE OF ILLINOIS
F.A.P. RTE. 665 SEC 144-B-1 BR
LOADING HL-93
STRUCTURE NO. 029-0075

NAME PLATE

See Std. 515001

TOTAL BILL OF MATERIAL

ITEM	UNIT	SUPER	SUB	TOTAL
** Stone Dumped Riprap, Class A4	Sq. Yd.	-	515	515
Filter Fabric	Sq. Yd.	-	515	515
Protective Coat	Sq. Yd.	457	-	457
Removal of Existing Structures	Each	-	-	1
Structure Excavation	Cu. Yd.	-	165	165
Concrete Structures	Cu. Yd.	-	53.3	53.3
Concrete Superstructure	Cu. Yd.	179.4	-	179.4
Bridge Deck Grooving	Sq. Yd.	360	-	360
Concrete Encasement	Cu. Yd.	-	4.2	4.2
Furnishing and Erecting Structural Steel	L. Sum	1	-	1
Stud Shear Connectors	Each	1080	-	1080
Reinforcement Bars, Epoxy Coated	Pound	42290	5640	47930
Bar Splicers	Each	459	24	483
Furnishing Steel Piles HP10x42	Foot	-	150	150
Driving Piles	Foot	-	150	150
Test Pile Steel HP10x42	Each	-	2	2
Pile Shoes	Each	-	12	12
Name Plates	Each	1	-	1
Anchor Bolts, 1"	Each	24	-	24
Geocomposite Wall Drain	Sq. Yd.	-	64	64
Porous Granular Embankment, Special	Cu. Yd.	-	101	101
Drainage Scuppers, DS-11	Each	4	-	4
Temporary Soil Retention System	Sq. Ft.	-	336	336
Pipe Underdrains for Structures 4"	Foot	-	138	138

**Pay item includes bedding material.



USER NAME =	DESIGNED - TBP	REVISED -
FILE NAME =	CHECKED - ADB	REVISED -
PLOT SCALE =	DRAWN - AJF	REVISED -
PLOT DATE =	CHECKED - MTH	REVISED -

STATE OF ILLINOIS
DEPARTMENT OF TRANSPORTATION

GENERAL DATA
STRUCTURE NO. 029-0075

SHEET NO. 2 OF 19 SHEETS

F.A.P. RTE. 665	SECTION 144-B-1 BR	COUNTY FULTON	TOTAL SHEETS 48	SHEET NO. 19
CONTRACT NO. 68778				
ILLINOIS FED. AID PROJECT				