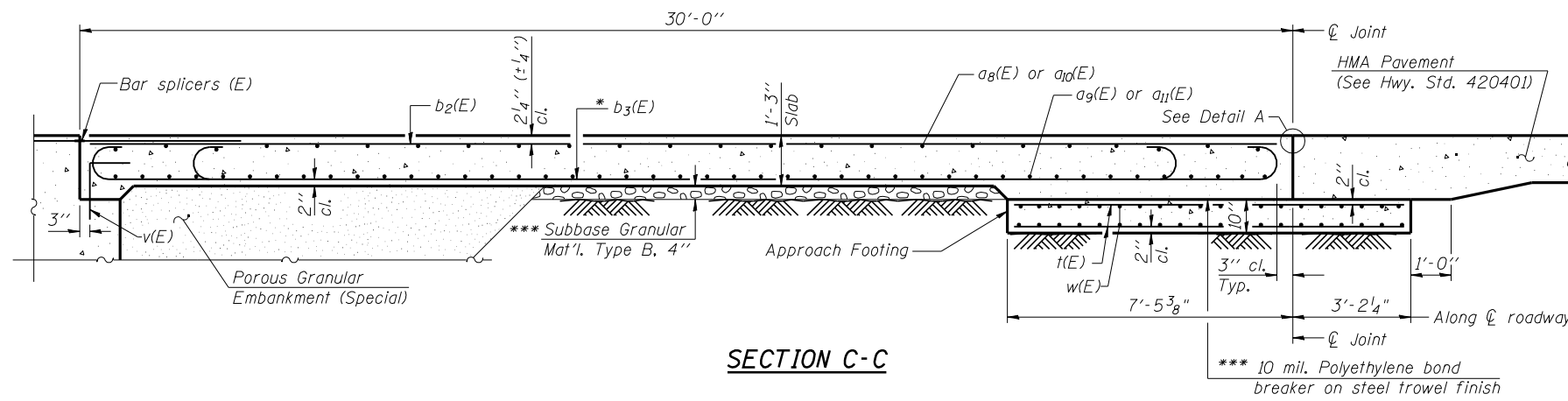
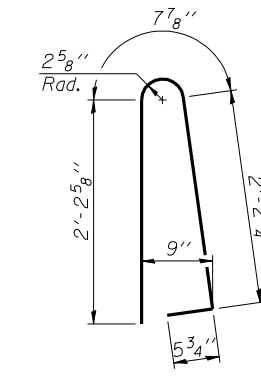


Notes:

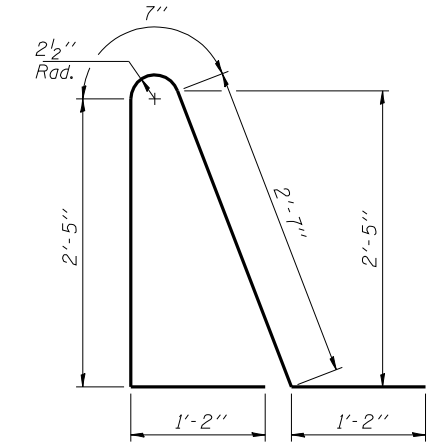
See sheet 10 of 19 for Detail A and View B-B.  
 Approach slab and parapet concrete shall be paid for as Concrete Superstructure.  
 Approach footing concrete shall be paid for as Concrete Structures.  
 Reinforcement shall be paid for as Reinforcement Bars, Epoxy Coated.  
 For v(E) bar details, see Sheet 8 of 19.  
 The approach footing maximum applied service bearing pressure (Qmax) = 2.0 ksf.  
 For bar splicer details, see Sheet 15 of 19.  
 Cost of excavation for approach footing included with Concrete Structures.  
 For Porous Granular Embankment (Special) and drainage treatment details, see Sheet 2 of 19.  
 For additional parapet details, see Sheet 8 of 19.



SECTION C-C

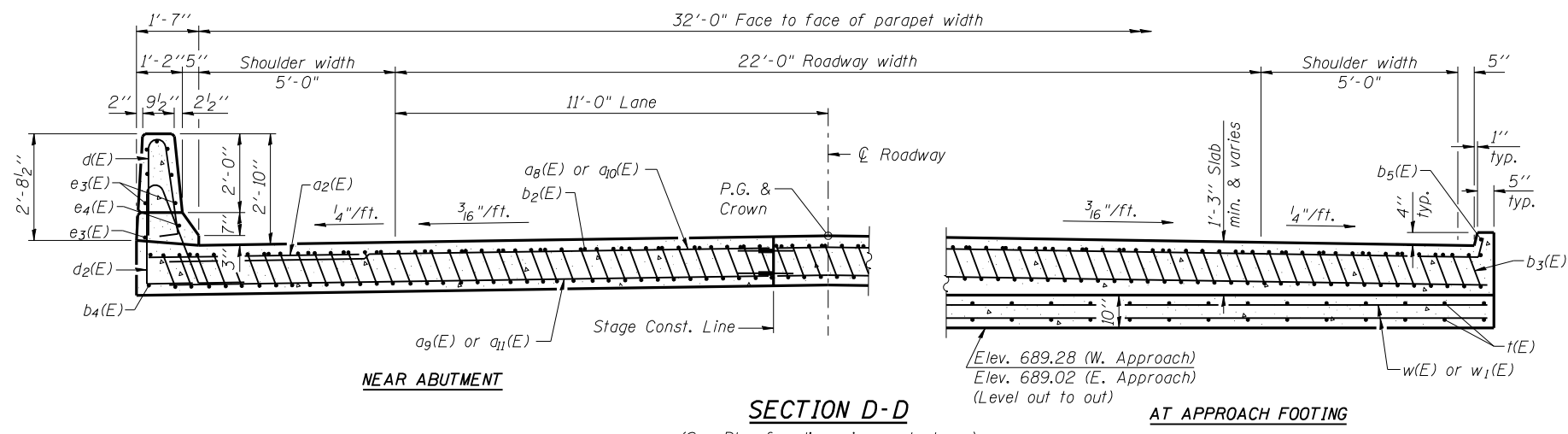


BAR d(E)



BAR d2(E)

\* Tilt #9 b3(E) bars as required to maintain clearance.  
 \*\*\* Cost included with Concrete Superstructure.

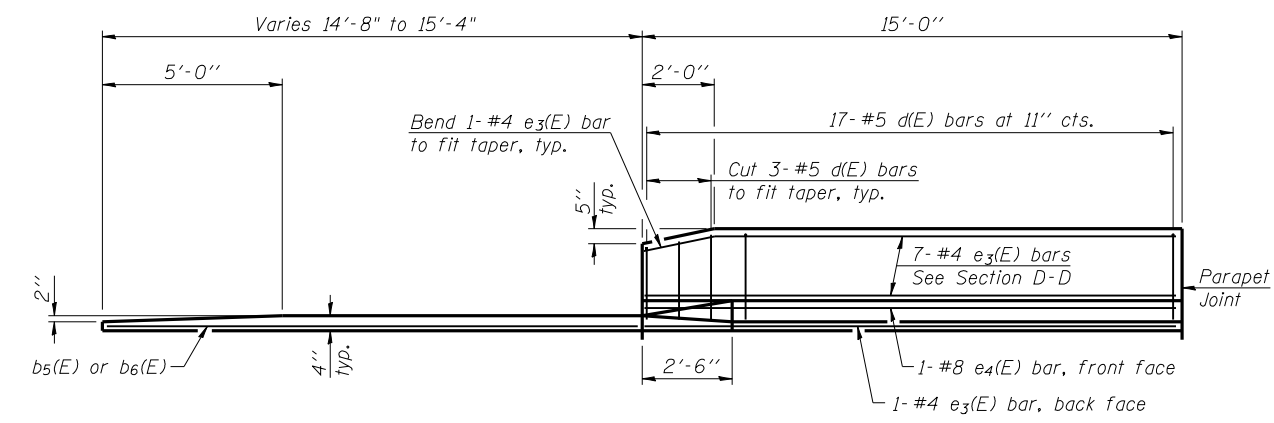


NEAR ABUTMENT

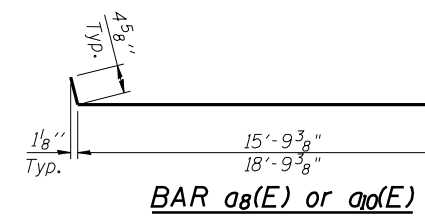
SECTION D-D

AT APPROACH FOOTING

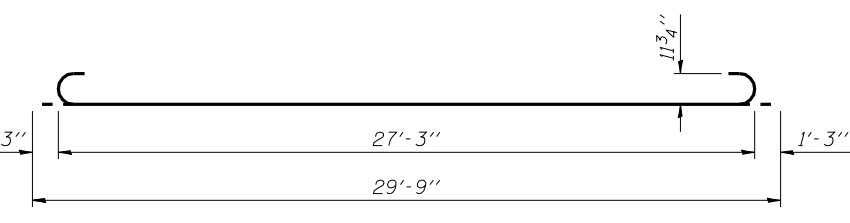
(See Plan for dimensions not shown)



VIEW E-E



BAR a8(E) or a10(E)

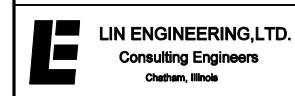


BAR b3(E)

TWO APPROACHES  
 BILL OF MATERIAL

Bar	No.	Size	Length	Shape
a2(E)	48	#6	6'-6"	—
a8(E)	50	#4	16'-2"	—
a9(E)	92	#5	16'-2"	—
a10(E)	50	#4	19'-2"	—
a11(E)	92	#5	19'-2"	—
b2(E)	56	#4	29'-8"	—
b3(E)	158	#9	29'-9"	—
b4(E)	4	#4	14'-8"	—
b5(E)	2	#4	14'-11"	—
b6(E)	2	#4	14'-5"	—
d(E)	68	#5	5'-7"	U
d2(E)	68	#5	7'-11"	U
e3(E)	32	#4	14'-8"	—
e4(E)	4	#8	14'-8"	—
t(E)	140	#4	10'-3"	—
w(E)	80	#5	16'-2"	—
w1(E)	80	#5	19'-2"	—
Concrete Superstructure		Cu. Yd.	105.4	
Concrete Structures		Cu. Yd.	22.2	
Reinforcement Bars, Epoxy Coated		Pound	27550	

(Sheet 2 of 2)



USER NAME =  
 FILE NAME =  
 PLOT SCALE =  
 PLOT DATE =

DESIGNED - TBP  
 CHECKED - ADB  
 DRAWN - AJF  
 CHECKED - MTH

REVISED -  
 REVISED -  
 REVISED -  
 REVISED -

STATE OF ILLINOIS  
 DEPARTMENT OF TRANSPORTATION

BRIDGE APPROACH SLAB DETAILS  
 STRUCTURE NO. 029-0075

SHEET NO. 11 OF 19 SHEETS

F.A.P. RTE.	SECTION	COUNTY	TOTAL SHEETS	SHEET NO.
665	144-B-1 BR	FULTON	48	28
CONTRACT NO. 68778				

ILLINOIS FED. AID PROJECT