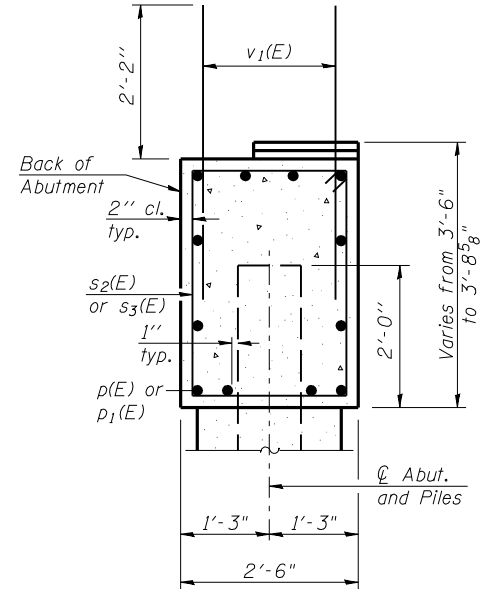
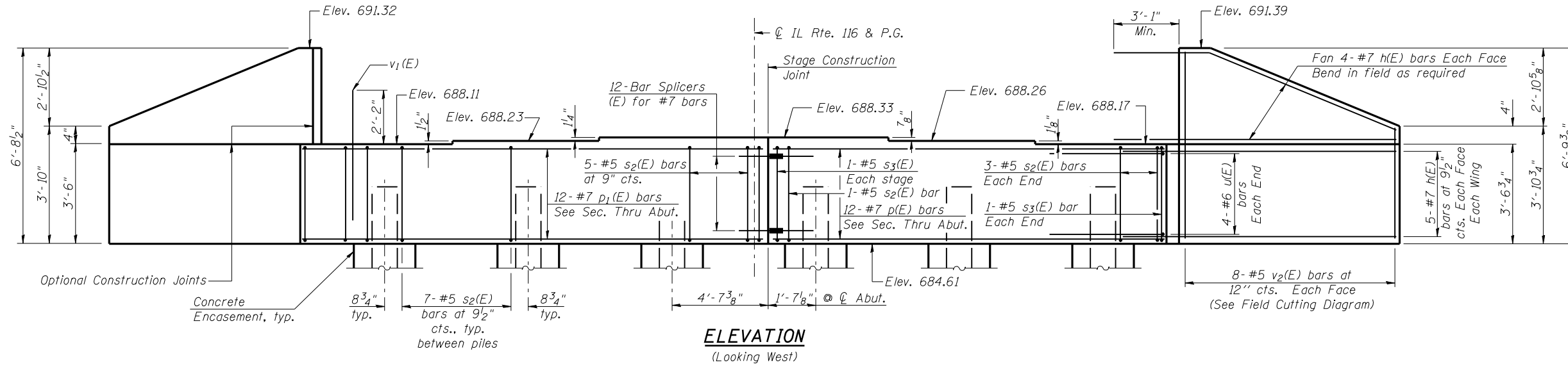
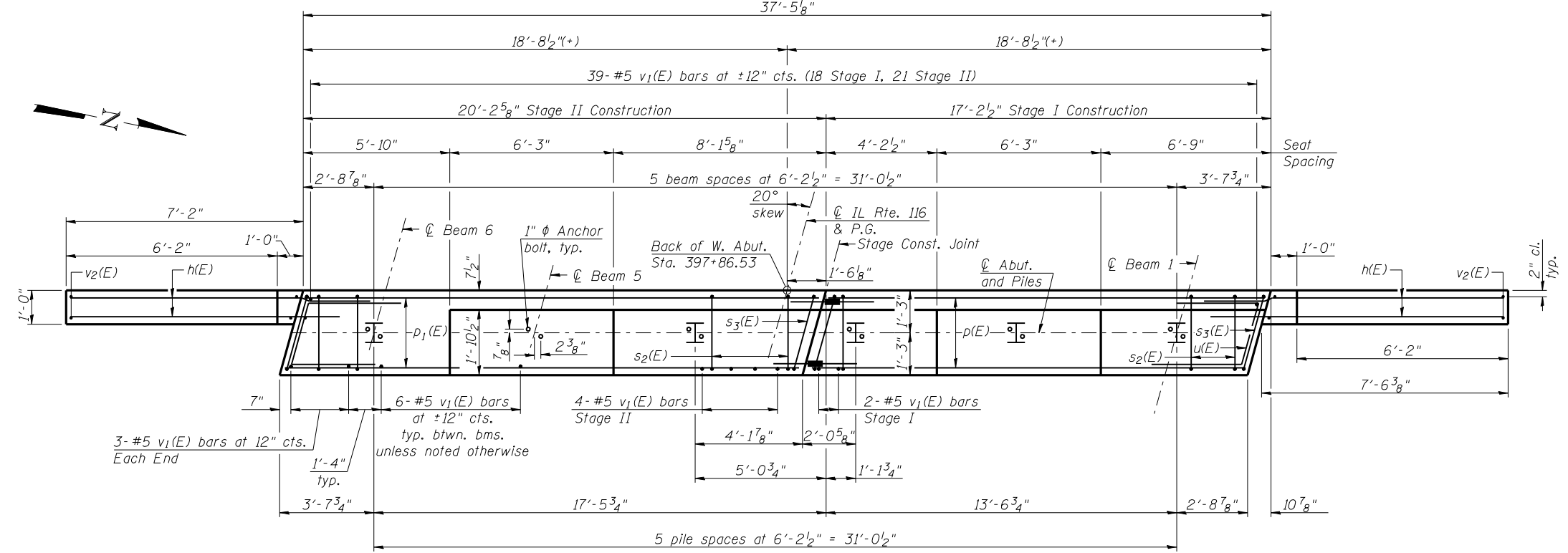


Notes:
 Pour steps monolithically with cap.
 Space reinforcement in cap to miss
 Anchor Bolts.



SEC. THRU ABUT.
 (Dimensions at Rt. L's)



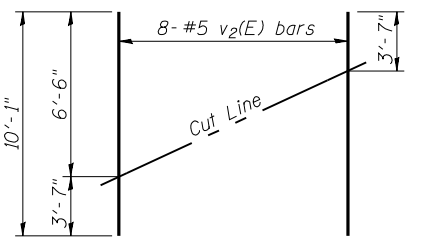
BILL OF MATERIAL

Bar	No.	Size	Length	Shape
h(E)	36	#7	10'-6"	—
p(E)	12	#7	16'-10"	—
p1(E)	12	#7	19'-10"	—
s2(E)	40	#5	11'-7"	□
s3(E)	4	#5	11'-10"	□
u(E)	8	#6	8'-11"	∟
v1(E)	75	#5	4'-4"	—
v2(E)	16	#5	10'-1"	—
Structure Excavation			Cu. Yd.	83
Concrete Structures			Cu. Yd.	15.6
Reinforcement Bars, Epoxy Coated			Pound	2820
Furnishing Steel Piles, HP10x42			Foot	80
Driving Piles			Foot	80
Test Pile Steel HP10x42			Each	1
Pile Shoes			Each	6
Concrete Encasement			Cu. Yd.	2.1

For details of Bar Splicers, see Sheet 15 of 19.
 For details of piles and Concrete Encasement, see Sheet 16 of 19.
 For drainage details, see Sheet 2 of 19.
 For bearing details, see Sheet 12 of 19.

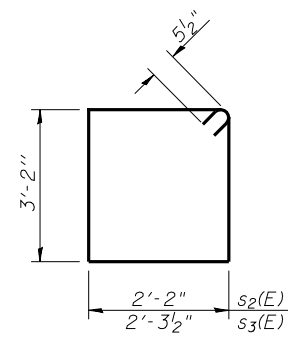
PILE DATA

Type: Steel HP10x42 with Pile Shoes
 Nominal Required Bearing: 326 kips
 Factored Resistance Available: 179 kips
 Est. Length: 16 ft.
 No. Production Piles: 5
 No. Test Piles: 1

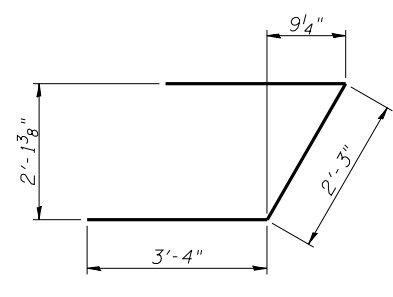


FIELD CUTTING DIAGRAM

Order v2(E) full length. Cut as shown and use remainder of bars in opposite face.



BARS s2(E) & s3(E)



BAR u(E)