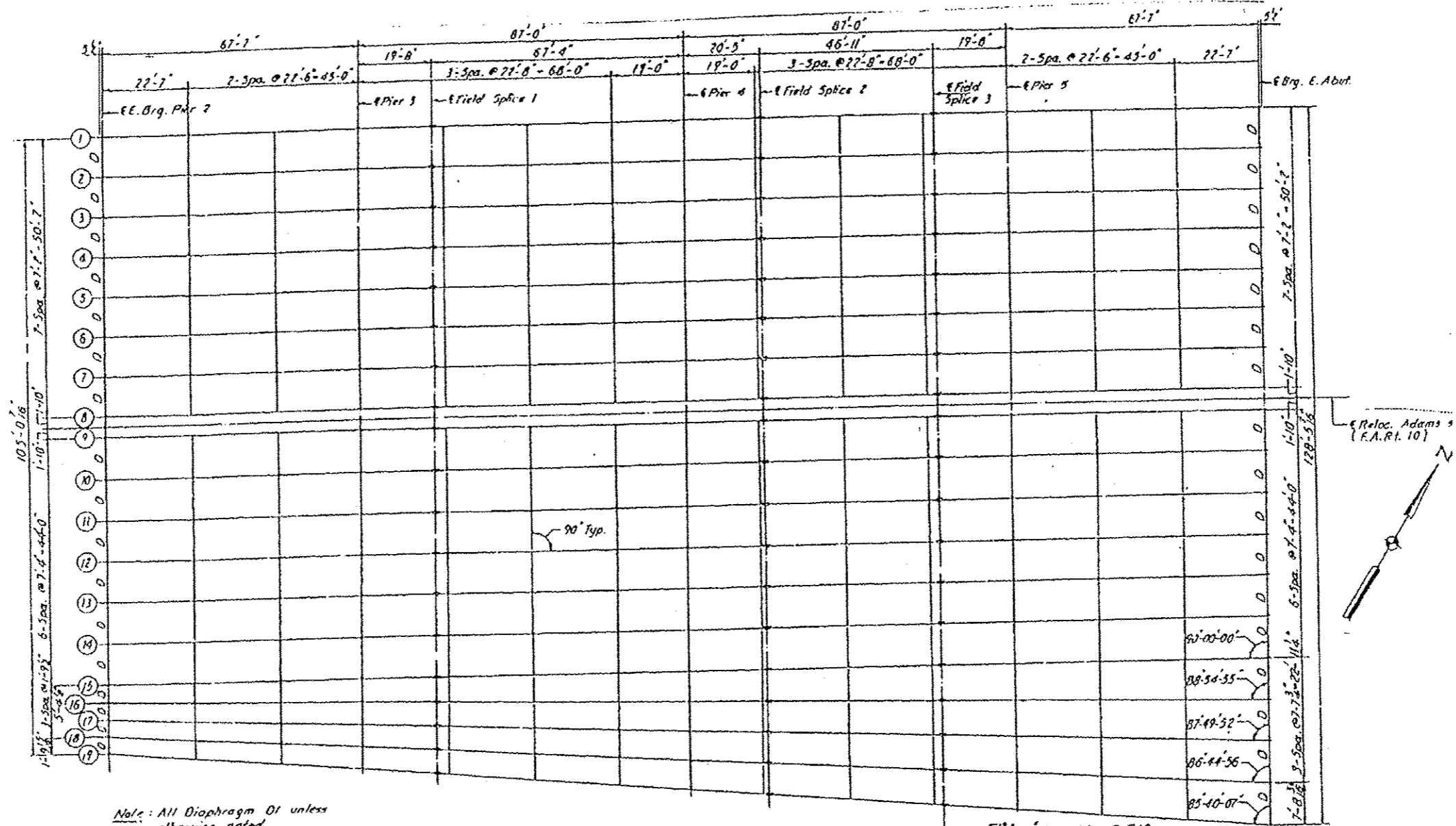
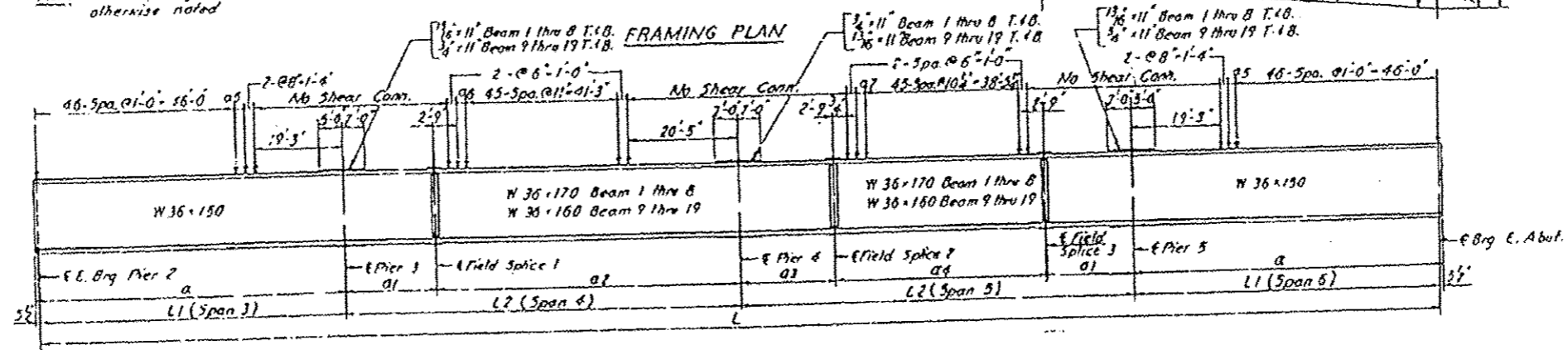


LOCATION 6 S.N. 072-0134 INFORMATION ONLY



Note: All Diaphragm OI unless otherwise noted



BEAM ELEVATION

FILE NAME + April 2813 bridge painting.dgn	USER NAME + TOM INGLIS	DESIGNED - TOM INGLIS	REVISED -	STATE OF ILLINOIS DEPARTMENT OF TRANSPORTATION	LOCATION 5 TRUSS DETAILS	F.A. RTE. VAR	SECTION D4 BRIDGE PAINTING 2012	COUNTY VARIOUS	TOTAL SHEETS 21	SHEET NO. 19
Default	PLOT SCALE + 48.0000' / in.	CHECKED - NICK JACK	REVISED -	SCALE: N/A	SHEET OF SHEETS STA. TO STA.	CONTRACT NO. 68B26 ILLINOIS FED. AID PROJECT				
	PLOT DATE + 2/22/2013	DATE - 2/6/13	REVISED -							