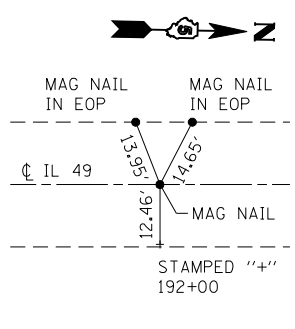
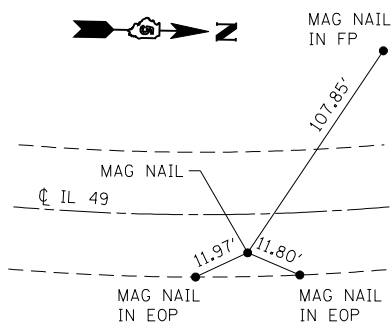


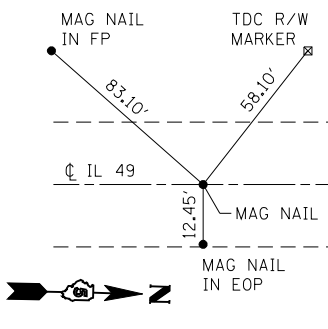
POT STA 177+96.25



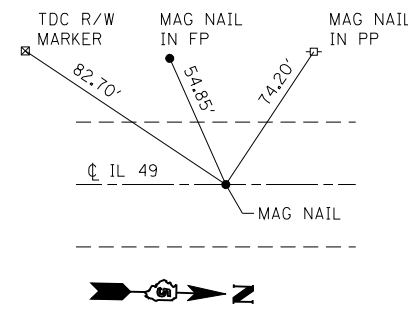
PC STA 191+99.00



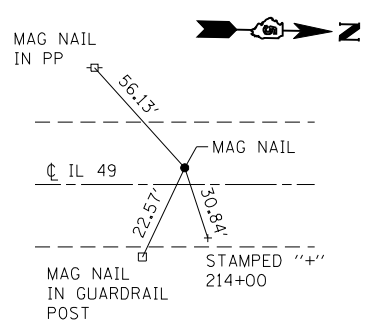
PI STA 198+90.89



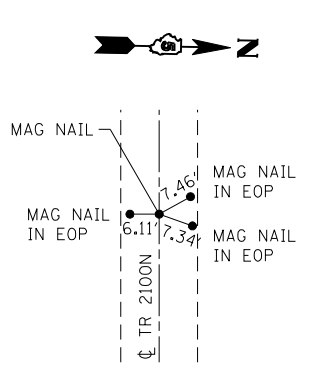
PT STA 205+82.75



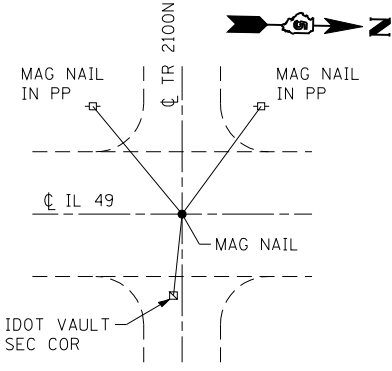
PC STA 206+64.19



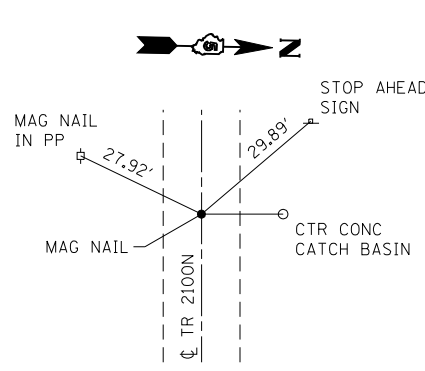
PI STA 213+70.98



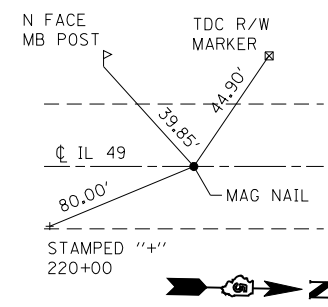
POT STA 4+33.34



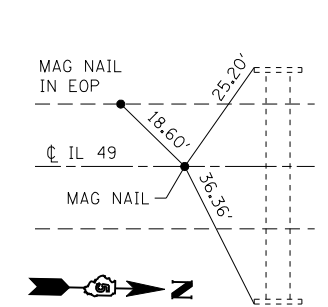
POT STA 15+00.00



POT STA 25+88.99



PT STA 220+77.73



POT STA 237+68.37

EXIST. CURVE 28
 PI STA. = 198+90.89
 $\Delta = 0^\circ 56' 06''$ (LT)
 $D = 0^\circ 04' 03''$
 $R = 84,796.18'$
 $T = 691.89'$
 $L = 1,383.75'$
 $E = 2.82'$
 $e = \text{-----}$
 $T.R. = \text{-----}$
 $S.E. RUN = \text{-----}$
 $P.C. STA. = 191+99.00$
 $P.T. STA. = 205+82.75$

EXIST. CURVE 29
 PI STA. = 213+70.98
 $\Delta = 1^\circ 01' 42''$ (RT)
 $D = 0^\circ 04' 22''$
 $R = 78,748.76'$
 $T = 706.79'$
 $L = 1,413.54'$
 $E = 3.17'$
 $e = \text{-----}$
 $T.R. = \text{-----}$
 $S.E. RUN = \text{-----}$
 $P.C. STA. = 206+64.19$
 $P.T. STA. = 220+77.73$

BENCHMARK: 4829-1 DISK IN TOP OF NORTH HEADWALL OF ACROSS BOX CULVERT ON TR 2100N SN 092+2034 STA 213+23.86, 67.00' RT EL 664.35

ALIGNMENT COORDINATES - IL 49			
STATION	NORTH	EAST	
POT 177+96.25	1273188.8625	1104468.7307	
PC 191+99.00	1274591.3917	1104443.8649	
PI 198+90.89	1275283.1750	1104431.6001	
PT 205+82.75	1275974.6661	1104408.0486	
PC 206+64.19	1276056.0589	1104405.2764	
PI 213+70.98	1276762.4393	1104381.2177	
PT 220+77.73	1277469.1377	1104369.8417	
POT 237+68.37	1279159.5583	1104342.6305	

ALIGNMENT COORDINATES - TR 2100N			
STATION	NORTH	EAST	
POT 4+33.34	1276673.0527	1103319.6655	
POT 15+00.00	1276696.6060	1104386.0689	
POT 25+88.99	1276715.2402	1105474.8959	

FILE NAME = ...\\v8-ns\d570615-shr\etb.dgn
 CB PROJECT NO 06027-7

USER NAME = CFC...
 PLOT SCALE = 400.000000' / IN.
 PLOT DATE = 6/14/2011

DESIGNED -
 DRAWN - CFC
 CHECKED - CCJ
 DATE - / /

REVISED -
 REVISED -
 REVISED -
 REVISED -

STATE OF ILLINOIS
 DEPARTMENT OF TRANSPORTATION

ALIGNMENT, TIES AND BENCHMARK
 SN 092-0171

SCALE: SHEET NO. OF SHEETS STA. TO STA.

F.A.P. RTE.	SECTION	COUNTY	TOTAL SHEETS	SHEET NO.
840	120BR-1	VERMILION	44	7

CONTRACT NO. 70615
 ILLINOIS FED. AID PROJECT

CB Coombe-Bloxdorf P.C.
 - CIVIL ENGINEERS -
 - STRUCTURAL ENGINEERS -
 - LAND SURVEYORS -
 Design Firm License No. 184-002703