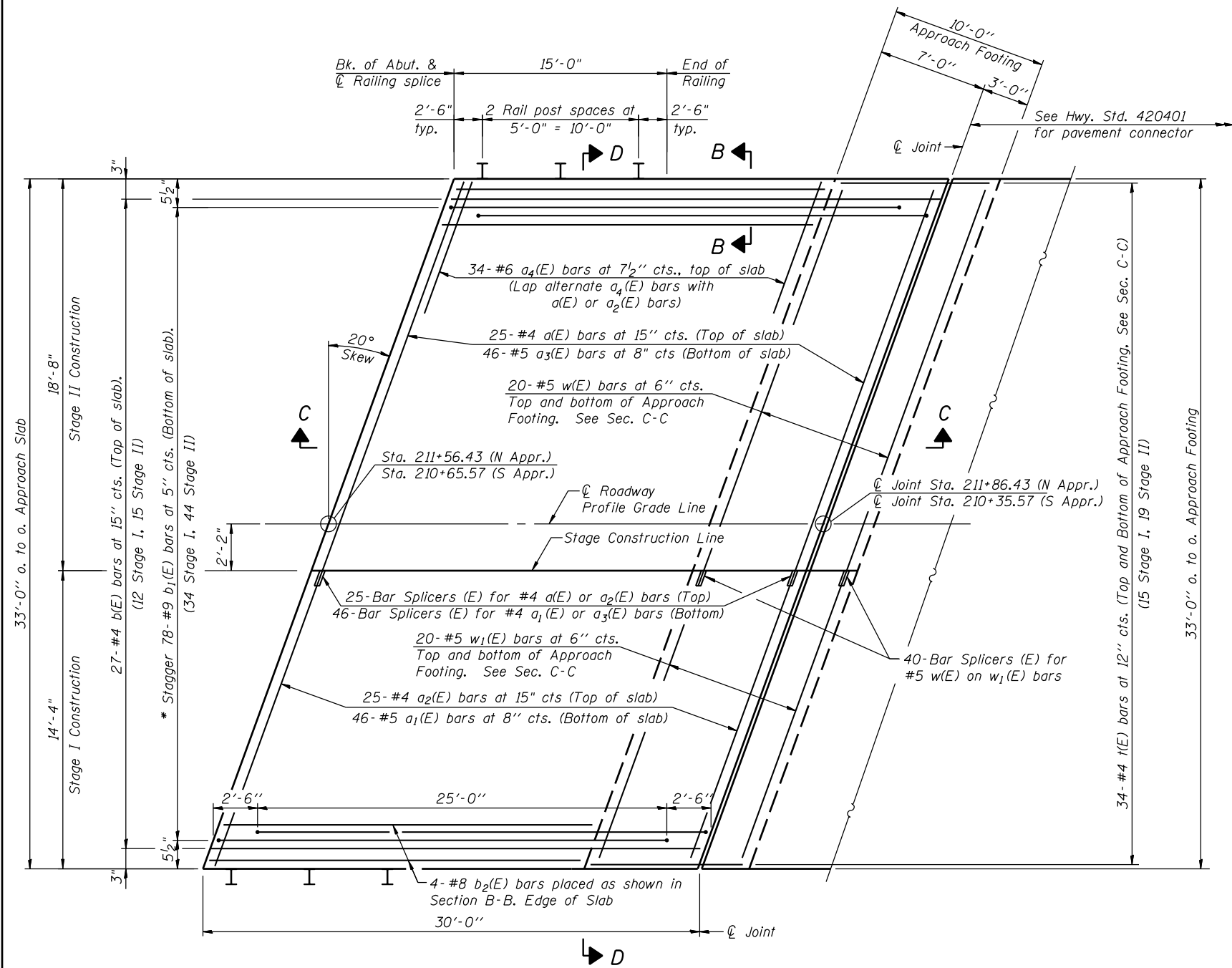


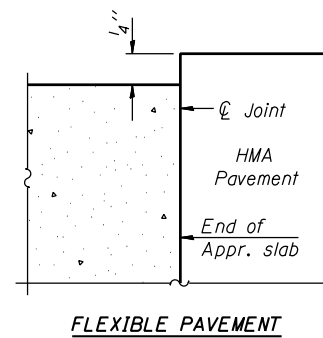
Notes:  
See sheet 8 of 16 for Sections C-C and D-D.  
a(E) and a<sub>1</sub>(E) bar spacings measured along  $\bar{C}$  Rdwy.



**PLAN**

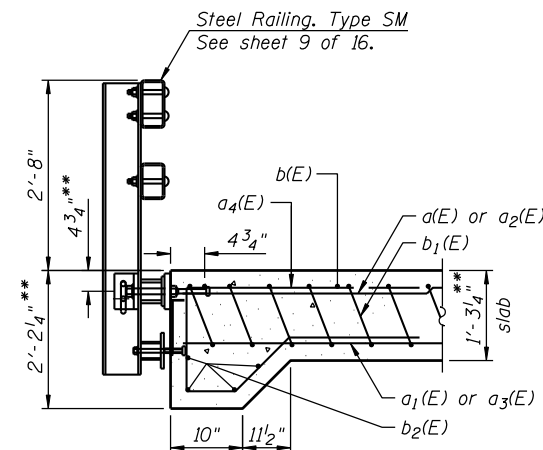
(North Approach Shown, South Approach Similar)

\*Tilt #9 b<sub>1</sub>(E) bars as required to maintain clearance.



**FLEXIBLE PAVEMENT**

**DETAIL A**



**SECTION B-B**

\*\*Prior to grinding

FILE NAME = S:\JOL\63300-6399\6346\024\Microso\Finals\Plans\Structural\0920171-70615-007-BAP.dgn

**STRAND ENGINEERS**  
1170 SOUTH HOUBOLT ROAD  
JOLIET, ILLINOIS 60431  
(815) 744-4200

USER NAME = rjgend	DESIGNED <i>RRD</i>	REVISED -
PLOT SCALE =	CHECKED <i>AJS</i>	REVISED -
PLOT DATE = 8/3/2011	DRAWN <i>BJF</i>	REVISED -
	CHECKED <i>AJS</i>	REVISED -

**STATE OF ILLINOIS  
DEPARTMENT OF TRANSPORTATION**

**BRIDGE APPROACH PAVEMENT (1 OF 2)  
STRUCTURE NO. 092-0171**

SHEET NO. 7 OF 16 SHEETS

F.A.P. RTE. 840	SECTION 120BR-1	COUNTY VERMILION	TOTAL SHEETS 44	SHEET NO. 19
CONTRACT NO. 70615				

ILLINOIS FED. AID PROJECT