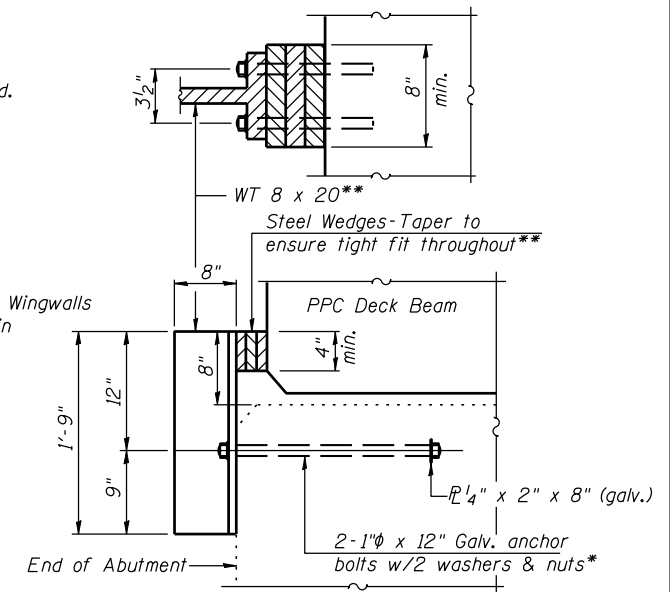


Showing Proposed

*** Place v(E) bars into 9" min. drilled holes in abutment. Epoxy grout according to Section 584 of the Standard Specifications. Cost included with cost of Reinforcement Bars, Epoxy Coated.

PLAN AT ABUTMENT
(Wearing Surface Not Shown)
(South Abutment Shown, North Abutment Similar)

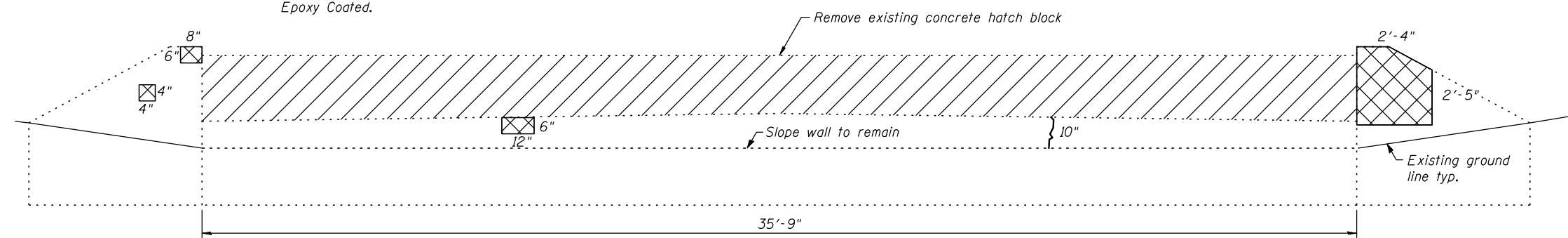
Showing Removal



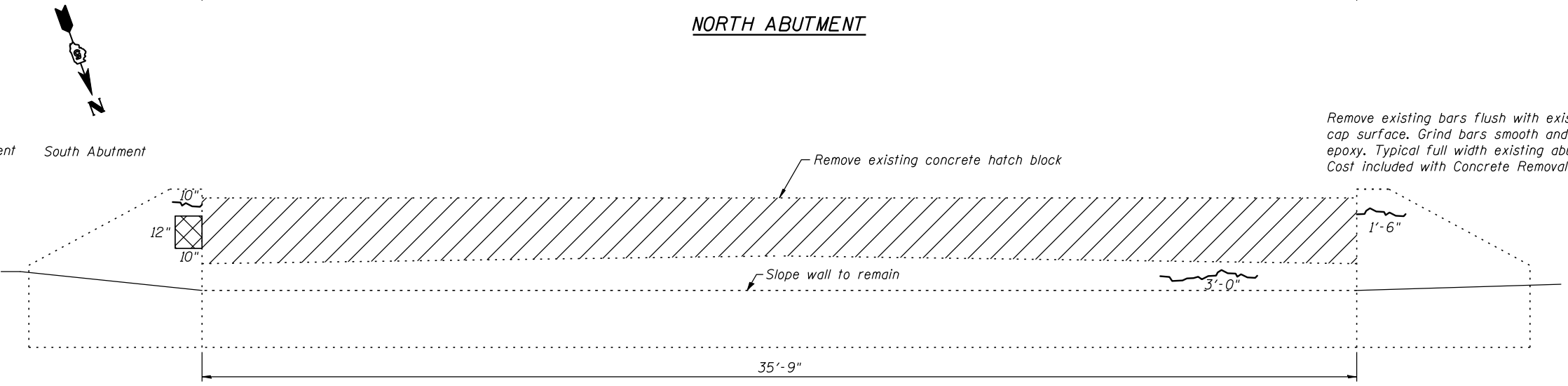
SIDE RETAINER DETAIL

*Anchor bolts shall be approved threaded rods placed in drilled holes and grouted in place. Cost of retainer and accessories are included with Precast Prestressed Concrete Deck Beams (21" Depth).

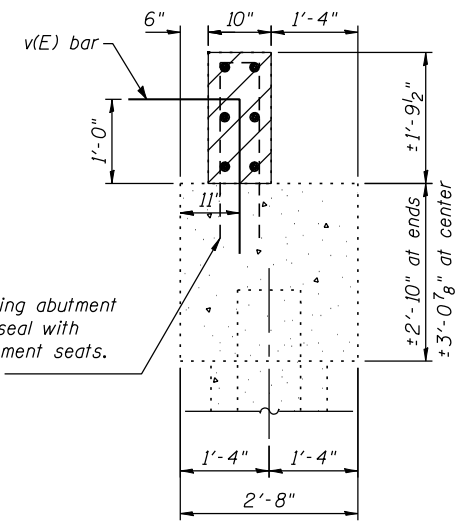
**Galvanize according to AASHTO M 111 and ASTM 385.



NORTH ABUTMENT



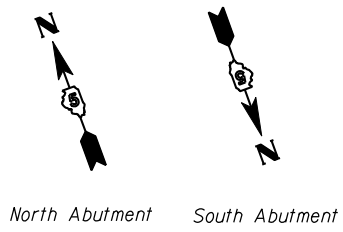
SOUTH ABUTMENT



SECTION C-C

BILL OF MATERIAL

Bar No.	No.	Size	Length	Shape
v(E)	74	#5	3'-5"	┌
Concrete Removal		CU YD	4	
Reinforcement Bars, Epoxy Coated		POUND	270	
Epoxy Crack Injection		FOOT	7	
Structural Repair of Concrete (Depth Equal to or Less Than 5 Inches)		SQ. FT	9	

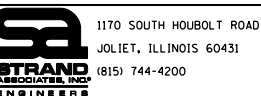
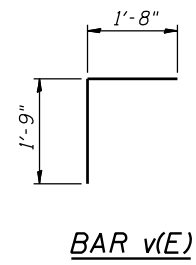


FILE NAME = s:\p1\6380--6395\6346\024\microso\finds\plena\structural\012-ABUT.dgn

LEGEND

- Crack-Epoxy Crack Injection
- Portion of Existing Structure to be Removed
- Structural Repair of Concrete (Depth Equal to or Less Than 5 Inches)

Notes:
For Section A-A see sheet 5 of 16.
See sheet 11 of 16 for bearing pad details.
Repairs shown are based upon observations performed in 2010 and are for Bidding Purposes only. Actual arrears to be repaired shall be determined by the engineer in the field at the time of construction. Quantities have been adjusted to account for the time difference.



1170 SOUTH HOUBOLT ROAD
JOLIET, ILLINOIS 60431
(815) 744-4200

USER NAME = rjgend
DESIGNED RRD
CHECKED AJS
DRAWN BJF
CHECKED AJS

REVISED -
REVISED -
REVISED -
REVISED -

**STATE OF ILLINOIS
DEPARTMENT OF TRANSPORTATION**

**ABUTMENT REPAIR AND DETAILS
STRUCTURE NO. 092-0171**

SHEET NO. 12 OF 16 SHEETS

F.A.P. RTE.	SECTION	COUNTY	TOTAL SHEETS	SHEET NO.
840	120BR-1	VERMILION	44	24
CONTRACT NO. 70615				

ILLINOIS FED. AID PROJECT