

F.A.I. RTE.	SECTION	COUNTY	TOTAL SHEETS	SHEET NO.
39	D5 PATCHING 2013-4	MCLEAN	19	1
		ILLINOIS	CONTRACT NO. 70980	

STATE OF ILLINOIS
DEPARTMENT OF TRANSPORTATION
DIVISION OF HIGHWAYS

**PROPOSED
HIGHWAY PLANS**

F.A.I. ROUTE 39 (I-39)
SECTION D5 PATCHING 2013-4

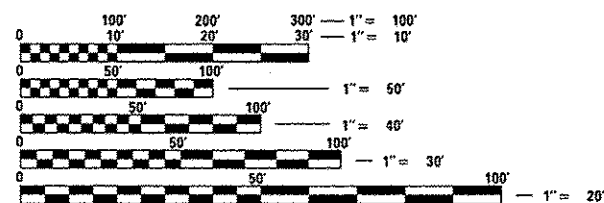
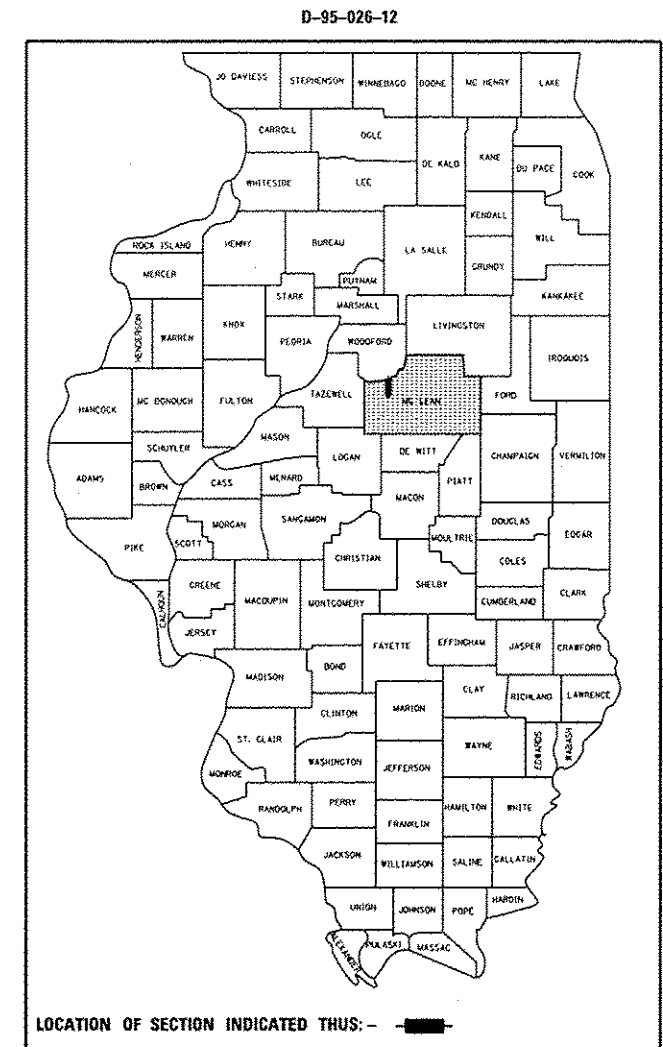
PATCHING
McLEAN COUNTY

C-95-026-12

FOR INDEX OF SHEETS, SEE SHEET NO. 2
FOR SUMMARY OF QUANTITIES, SEE SHEET NO. 4

CURRENT ADT = 19,900 (2011)

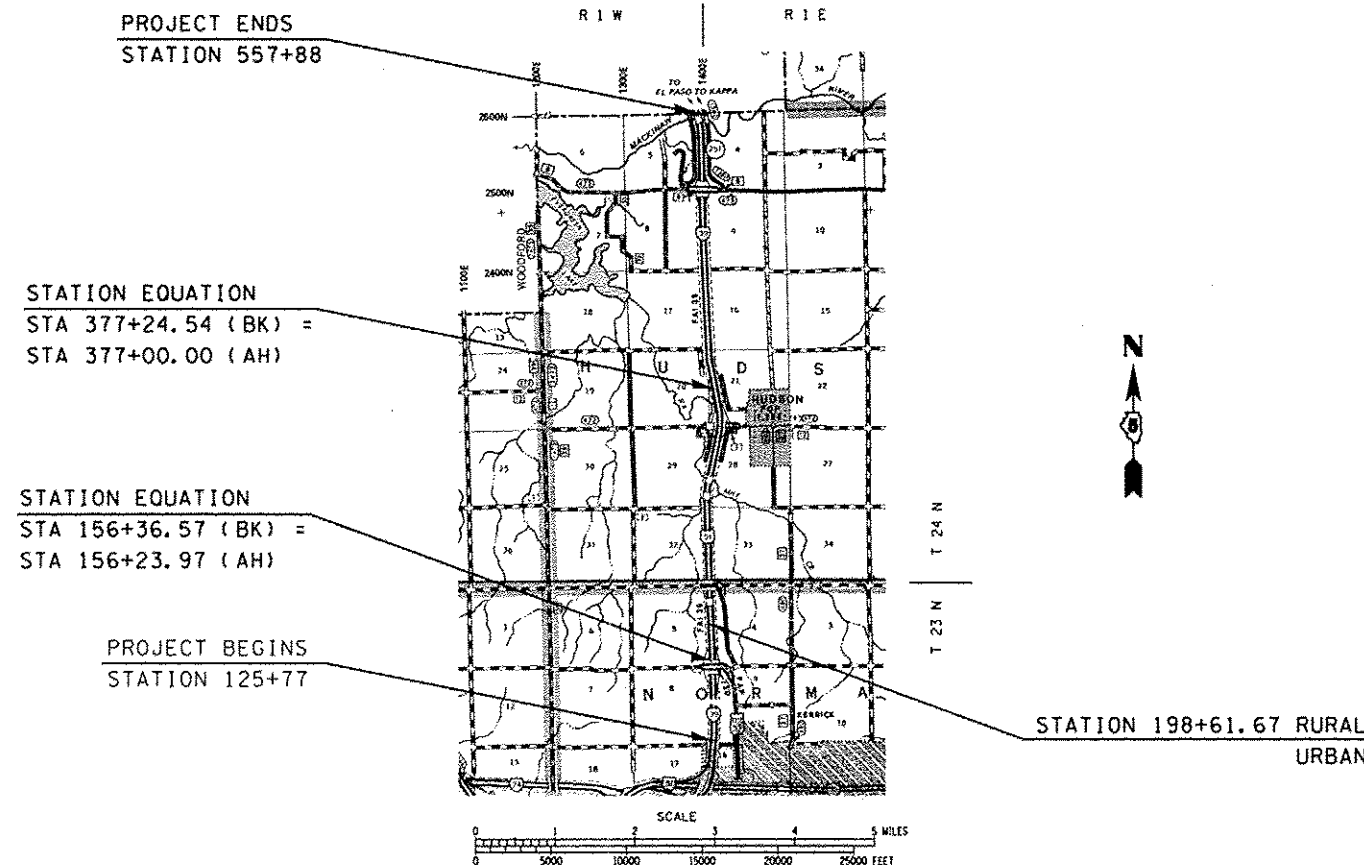
DESIGN DESIGNATION
INTERSTATE
N/A



FULL SIZE PLANS HAVE BEEN PREPARED USING STANDARD ENGINEERING SCALES. REDUCED SIZED PLANS WILL NOT CONFORM TO STANDARD SCALES. IN MAKING MEASUREMENTS ON REDUCED PLANS, THE ABOVE SCALES MAY BE USED.

J.U.L.I.E.
JOINT UTILITY LOCATION INFORMATION FOR EXCAVATION
1-800-892-0123
OR 811 NORMAL & HUDSON TOWNSHIP

PROJECT ENGINEER JASON STULTS, P.E.
PROJECT MANAGER ALEX KEDAS, P.E.
PHONE: (217)465-4181
CONTRACT NO. 70980



PATCHING FROM NORTH OF I-55 TO WOODFORD COUNTY LINE

GROSS LENGTH = 43,210.27 FT. = 8.184 MILE
NET LENGTH = 43,210.27 FT. = 8.184 MILE

STATE OF ILLINOIS
DEPARTMENT OF TRANSPORTATION
DIVISION OF HIGHWAYS

SUBMITTED *Jan 24 2013*
Joseph E. Gowen
DEPUTY DIRECTOR OF HIGHWAYS, REGION ENGINEER

March 22 2013
John D. Baramacci, P.E.
ENGINEER OF DESIGN AND ENVIRONMENT

March 22 2013
Omer Osman, P.E.
DIRECTOR OF HIGHWAYS, CHIEF ENGINEER

PRINTED BY THE AUTHORITY
OF THE STATE OF ILLINOIS