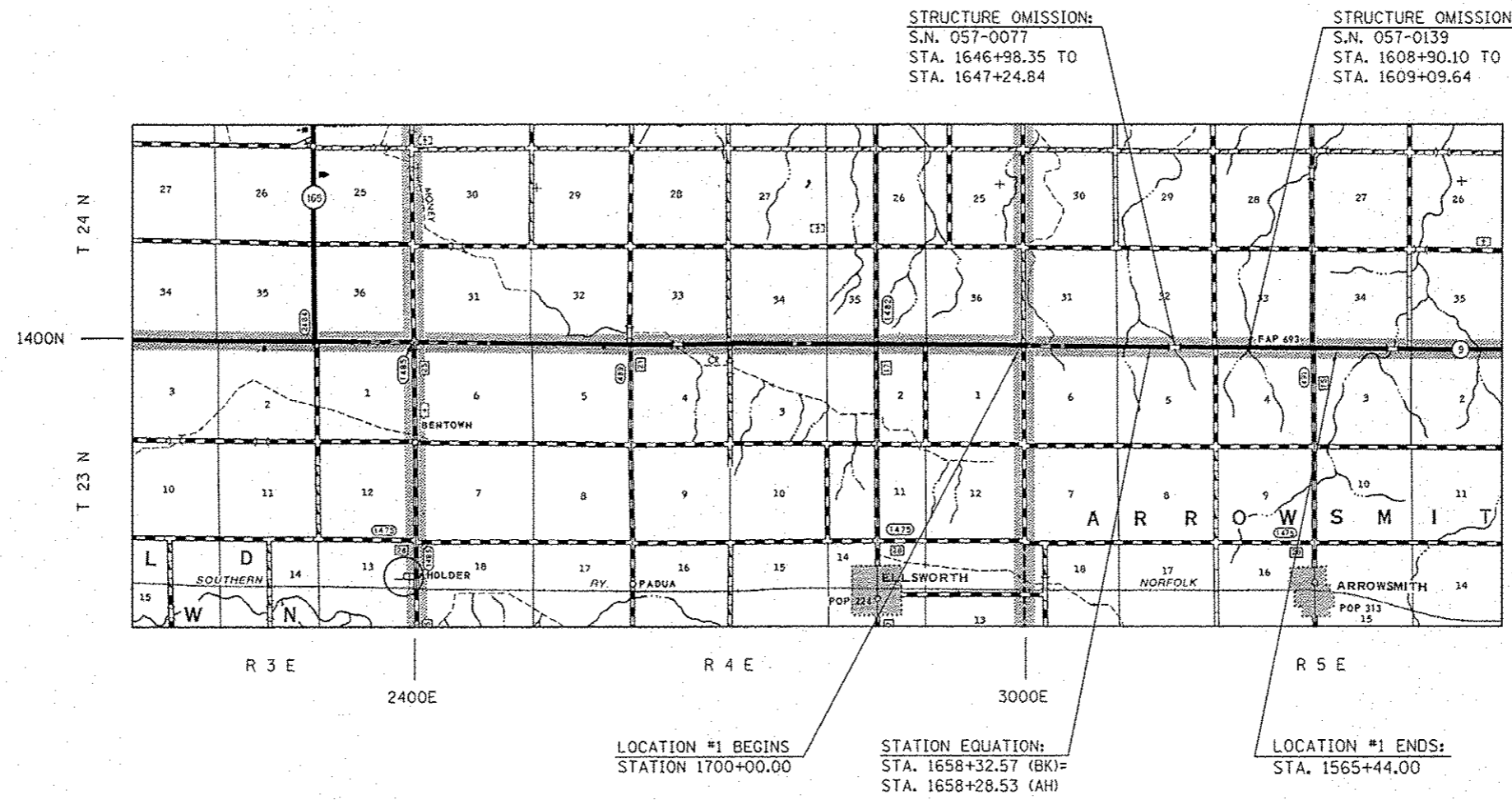


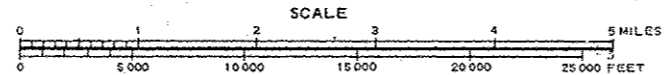
# LOCATION MAP #1

## F.A.P. ROUTE 693 (IL 9) FROM STATION 1700+00.00 TO ARROWSMITH ROAD

### MCLEAN COUNTY / RURAL 2-LANE



• NOTE:  
STATIONING CHANGES DIRECTIONS AND DECREASES  
FROM STA. 2018+00.00 (AH) TO STA. 1565+44.00



TOWNSHIP:  
ARROWSMITH

GROSS LENGTH OF LOCATION #1 = 13,460.04 FT. = 2.55 MILES  
NET LENGTH OF LOCATION #1 = 13,366.99 FT. = 2.53 MILES

FILE NAME +	USER NAME + ppersonbr	DESIGNED -	REVISED -	<b>STATE OF ILLINOIS DEPARTMENT OF TRANSPORTATION</b>	<b>LOCATION MAP #1</b>			F.A. RTE.	SECTION	COUNTY	TOTAL SHEETS	SHEET NO.
c:\pwork\pvidat\personbr\d8333862\05	0481-shr-loc_mps.dgn	DRAWN -	REVISED -					VAR.	+	MCLEAN	26	3
	PLOT SCALE + 40.0000 / in.	CHECKED -	REVISED -					*DS CRACK & JOINT SEAL 2013-1		CONTRACT NO. 709B1		
	PLOT DATE + 2/1/2013	DATE -	REVISED -					SCALE:	SHEET 1	OF 1	SHEETS	STA.