

**STATE OF ILLINOIS**  
**DEPARTMENT OF TRANSPORTATION**  
**DIVISION OF HIGHWAYS**  
**PROPOSED**  
**HIGHWAY PLANS**  
**VARIOUS ROUTES**  
**SECTION D5 CRACK & JOINT SEAL 2013-1**  
**ROUT & SEAL WEST FIELD AREA**  
**MCLEAN COUNTY**

F.A. RTE.	SECTION	COUNTY	TOTAL SHEETS	SHEET NO.
VAR.	*	MCLEAN	26	1
		ILLINOIS	CONTRACT NO. 70981	

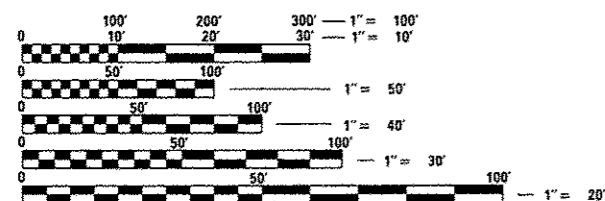
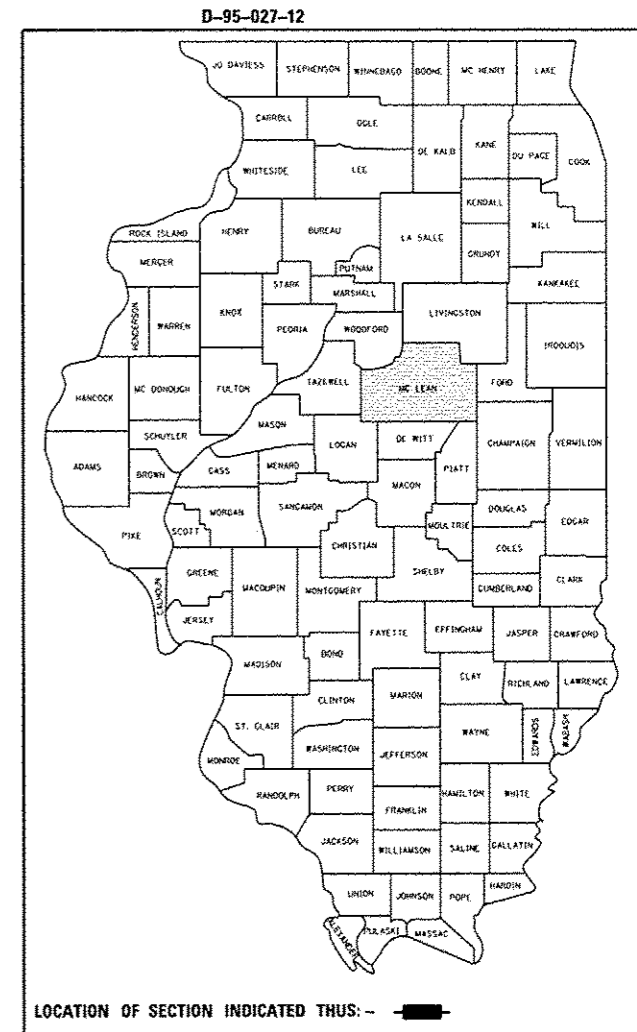
D5 CRACK & JOINT SEAL 2013-1

FOR INDEX OF SHEETS, SEE SHEET NO. 2  
 FOR SUMMARY OF QUANTITIES, SEE SHEET NO. 9

CURRENT TRAFFIC DATA

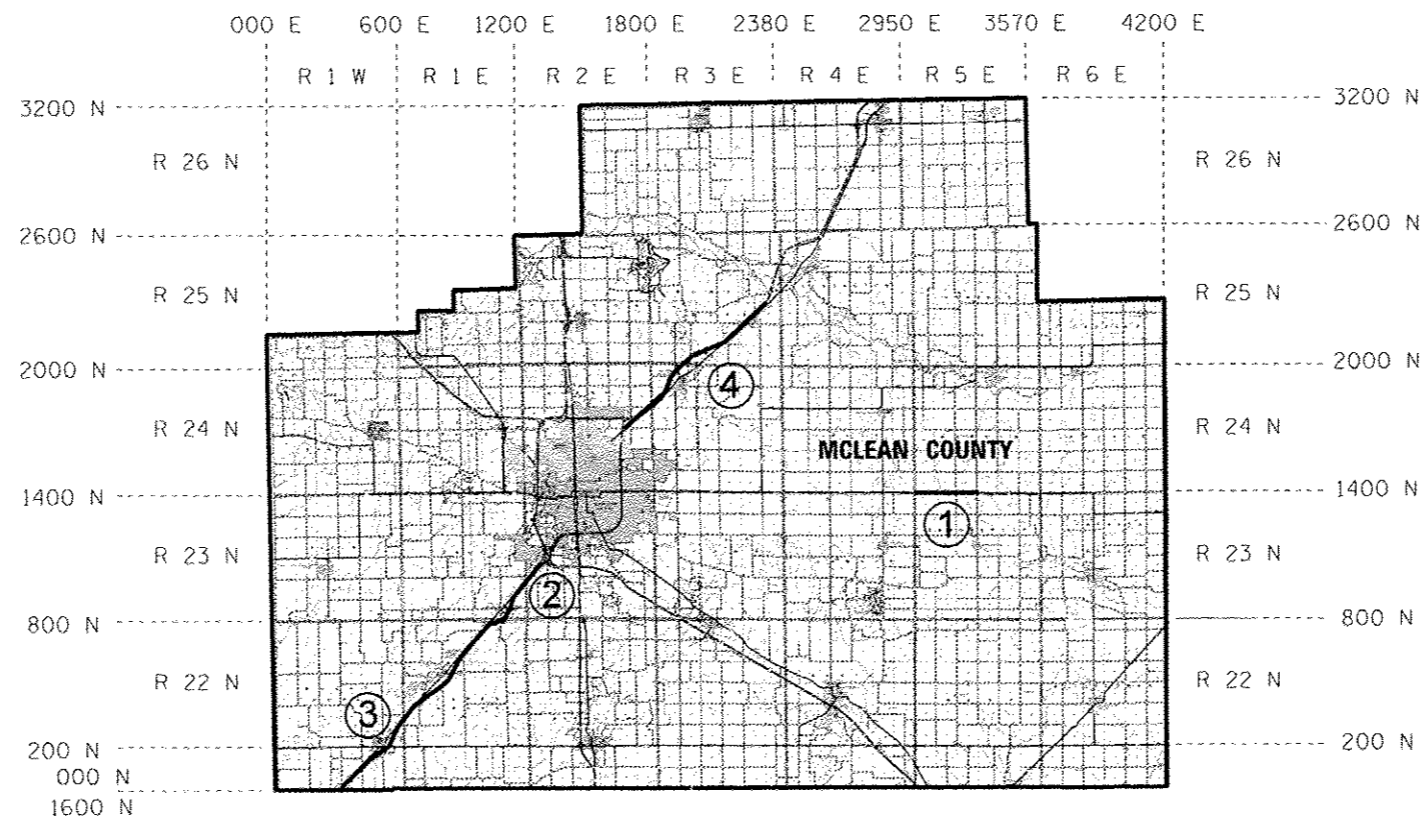
- LOCATION #1: F.A.P. 693 (IL 9)  
FROM STA. 1700+00 TO ARROWSMITH RD  
AVERAGE ADT = 1,500
- LOCATION #2: F.A.I. ROUTE 74 (I-74)  
SPEGHETTI BOWL @ S. SIDE OF BLOOMINGTON  
FROM I-55 TO US-51, INCLUDING I-55 BUS & RAMPS  
AVERAGE ADT = 20,700
- LOCATION #3: F.A.I. 55/ (I-55)  
FROM LOGAN CO LINE TO I-74 (BLOOMINGTON)  
& RAMPS @ SHIRLEY & McLEAN  
AVERAGE ADT = 23,000
- LOCATION #4: F.A.I. 55/ (I-55)  
FROM BYPASS (N OF T-55 BUSN) TO LEXINGTON  
AVERAGE ADT = 21,600

C-95-027-12  
 SEE PAGES 3-11 FOR LOCATION MAPS, GROSS & NET LENGTHS OF PROJECT BY LOCATION



FULL SIZE PLANS HAVE BEEN PREPARED USING STANDARD ENGINEERING SCALES. REDUCED SIZED PLANS WILL NOT CONFORM TO STANDARD SCALES. IN MAKING MEASUREMENTS ON REDUCED PLANS, THE ABOVE SCALES MAY BE USED.

J.U.L.I.E.  
 JOINT UTILITY LOCATION INFORMATION FOR EXCAVATION  
 1-800-892-0123  
 OR 811



**PROJECT ENGINEER : NANCY FASIG**  
**SQUAD LEADER: MONROETTA GUTTERRIDGE**  
**PHONE NUMBER: (217)-465-4181**  
**CONTRACT NO. 70981**

GROSS LENGTH = 164,687.68 FT. = 31.191 MILE  
 NET LENGTH = 162,553.20 FT. = 30.787 MILE

SCALE  
 0.0 — 2.0  
 MILES

STATE OF ILLINOIS  
 DEPARTMENT OF TRANSPORTATION  
 DIVISION OF HIGHWAYS

SUBMITTED Jan. 30 2013  
Joseph E. Crowe  
 DEPUTY DIRECTOR OF HIGHWAYS, REGION ENGINEER

March 22 2010  
John D. Baranzelli, PE, Inc.  
 ENGINEER OF DESIGN AND ENVIRONMENT

March 22 2010  
Omer Osman, PE, Inc.  
 DIRECTOR OF HIGHWAYS, CHIEF ENGINEER

**PRINTED BY THE AUTHORITY  
 OF THE STATE OF ILLINOIS**

## INDEX OF SHEETS

SHEET NO.	DESCRIPTION
1	COVER SHEET
2	INDEX OF SHEETS
2	LIST OF STANDARDS
3-7	LOCATION MAPS
8	GENERAL NOTES
9	SUMMARY OF QUANTITIES
10-17	EXISTING TYPICAL CROSS SECTIONS
18	SCHEDULE OF QUANTITIES
19	DETAIL FOR CRACK AND JOINT SEALING
20	DETAIL FOR TRAFFIC CONTROL FOR RAMPS
21	I-74 EB SWITCHBACK DETAIL
22-25	DETAIL FOR PAVEMENT MARKING AND MARKERS (RURAL & URBAN APPLICATIONS)
26	DETAIL FOR PAVEMENT MARKING (INTERSTATE & MULTI-LANE APPLICATIONS)

## LIST OF STANDARDS

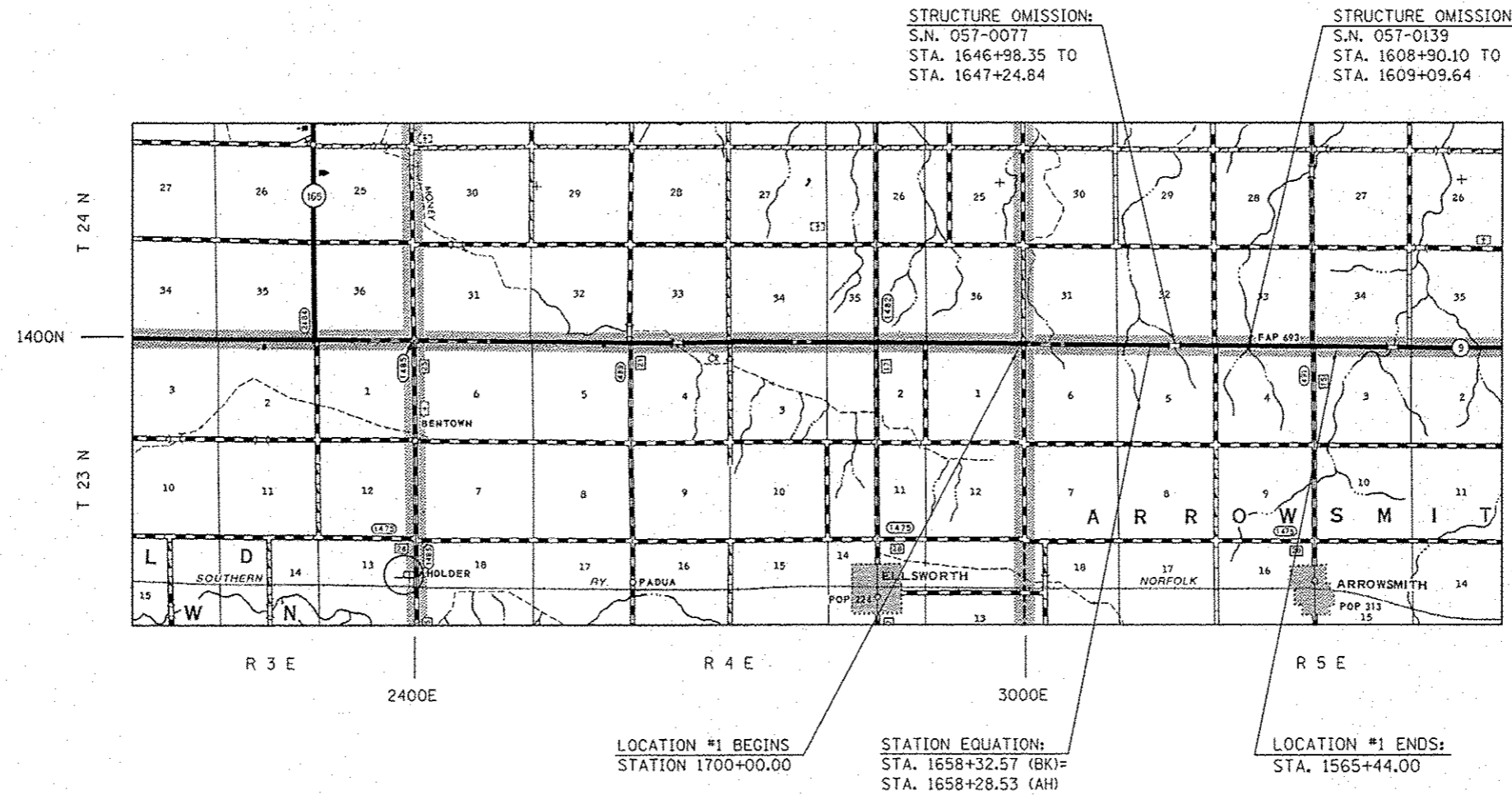
STANDARD NO.	NAME OF STANDARD
000001-06	STANDARD SYMBOLS, ABBREVIATIONS AND PATTERNS
001006	DECIMAL OF AN INCH AND OF A FOOT
701306-03	LANE CLOSURE, 2L, 2W, SLOW MOVING OPERATIONS DAY ONLY, FOR SPEEDS $\geq$ 45 MPH
701311-03	LANE CLOSURE, 2L, 2W, MOVING OPERATIONS - DAY ONLY
701400-06	APPROACH TO LANE CLOSURE, FREEWAY/EXPRESSWAY
701406-06	LANE CLOSURE, FREEWAY/EXPRESSWAY, DAY OPERATIONS ONLY
701411-08	LANE CLOSURE, MULTILANE, AT ENTRANCE OR EXIT RAMP, FOR SPEEDS $\geq$ 45 MPH
701421-05	LANE CLOSURE, MULTILANE, DAY OPERATIONS ONLY FOR SPEEDS $\geq$ 45 MPH TO 55 MPH
701426-05	LANE CLOSURE, MULTILANE, INTERMITTENT OR MOVING OPERATION, FOR SPEEDS $\geq$ 45 MPH
701427-01	LANE CLOSURE, MULTILANE, INTERMITTENT OR MOVING OPERATION, FOR SPEEDS $\leq$ 40 MPH
701446-04	TWO LANE CLOSURE, FREEWAY/EXPRESSWAY
701901-02	TRAFFIC CONTROL DEVICES
780001-03	TYPICAL PAVEMENT MARKINGS

FILE NAME :	USER NAME : piersonbr	DESIGNED -	REVISED -	<b>STATE OF ILLINOIS DEPARTMENT OF TRANSPORTATION</b>	<b>INDEX OF SHEETS LIST OF STANDARDS</b>	F.A. RTE.	SECTION	COUNTY	TOTAL SHEETS	SHEET NO.
c:\pw\work\puidat\piersonbr\0333862\04	0301-shi-gennote.dgn	DRAWN -	REVISED -				•	MCLEAN	26	2
#MODELNAME#	PLOT SCALE : 40,0000' / in.	CHECKED -	REVISED -		SCALE: NONE	SHEET 1	OF 1	SHEETS	STA.	TO STA.
	PLOT DATE : 2/1/2013	DATE -	REVISED -							CONTRACT NO. 70981
										ILLINOIS FED. AID PROJECT

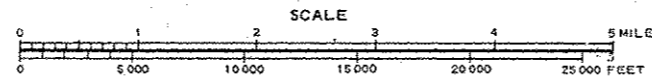
# LOCATION MAP #1

## F.A.P. ROUTE 693 (IL 9) FROM STATION 1700+00.00 TO ARROWSMITH ROAD

### MCLEAN COUNTY / RURAL 2-LANE



• NOTE:  
STATIONING CHANGES DIRECTIONS AND DECREASES  
FROM STA. 2018+00.00 (AH) TO STA. 1565+44.00



TOWNSHIP:  
ARROWSMITH

GROSS LENGTH OF LOCATION #1 = 13,460.04 FT. = 2.55 MILES  
NET LENGTH OF LOCATION #1 = 13,366.99 FT. = 2.53 MILES

FILE NAME +	USER NAME + p1ersonbr	DESIGNED -	REVISED -	<b>STATE OF ILLINOIS DEPARTMENT OF TRANSPORTATION</b>	<b>LOCATION MAP #1</b>	F.A. RTE.	SECTION	COUNTY	TOTAL SHEETS	SHEET NO.
c:\pwork\pwidat\p1ersonbr\d8333862\05	0481-sh1-loc.mps.dgn	DRAWN -	REVISED -			VAR.	+	MCLEAN	26	3
	PLOT SCALE + 40.0000 / in.	CHECKED -	REVISED -			*DS CRACK & JOINT SEAL 2013-1		CONTRACT NO. 709B1		
	PLOT DATE + 2/1/2013	DATE -	REVISED -			ILLINOIS FED. AID PROJECT				
						SCALE:	SHEET 1	OF 1	SHEETS	STA. TO STA.

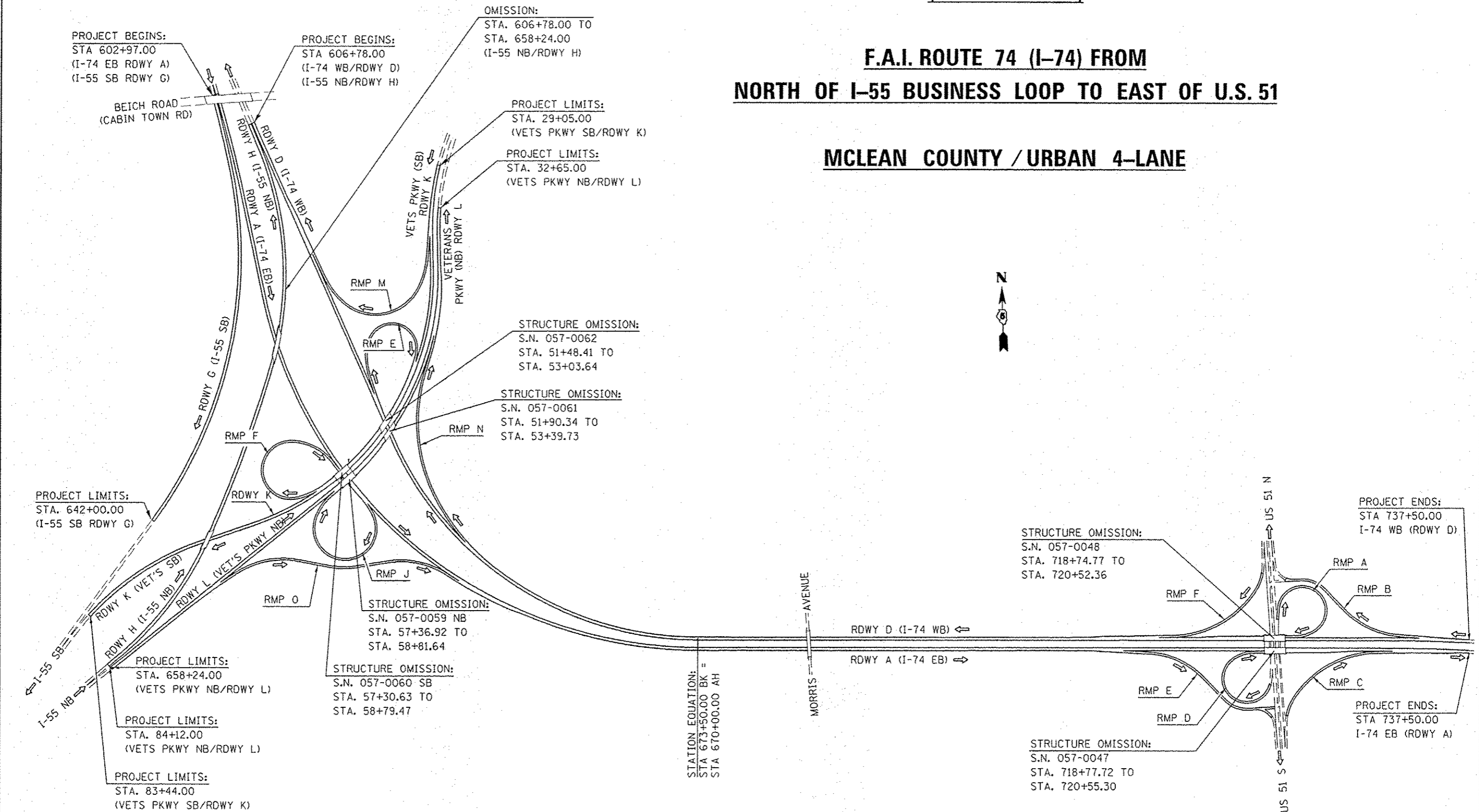


# LOCATION MAP #2

(SHEET 2 OF 2)

## F.A.I. ROUTE 74 (I-74) FROM NORTH OF I-55 BUSINESS LOOP TO EAST OF U.S. 51

### MCLEAN COUNTY / URBAN 4-LANE



FILE NAME	USER NAME	DESIGNED	REVISED
ci:\p\work\p\wide\p\personbr\00330862\05	personbr		
	0581-shr-lac.maps.dgn	DRAWN	REVISED
		CHECKED	REVISED
	PLOT SCALE = 40.0000 1/4 in.	DATE	REVISED
	PLOT DATE = 2/1/2013		

**STATE OF ILLINOIS  
DEPARTMENT OF TRANSPORTATION**

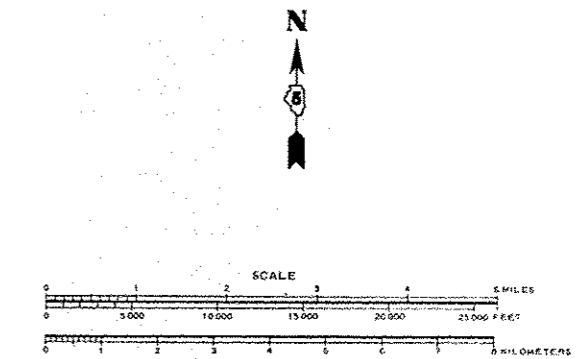
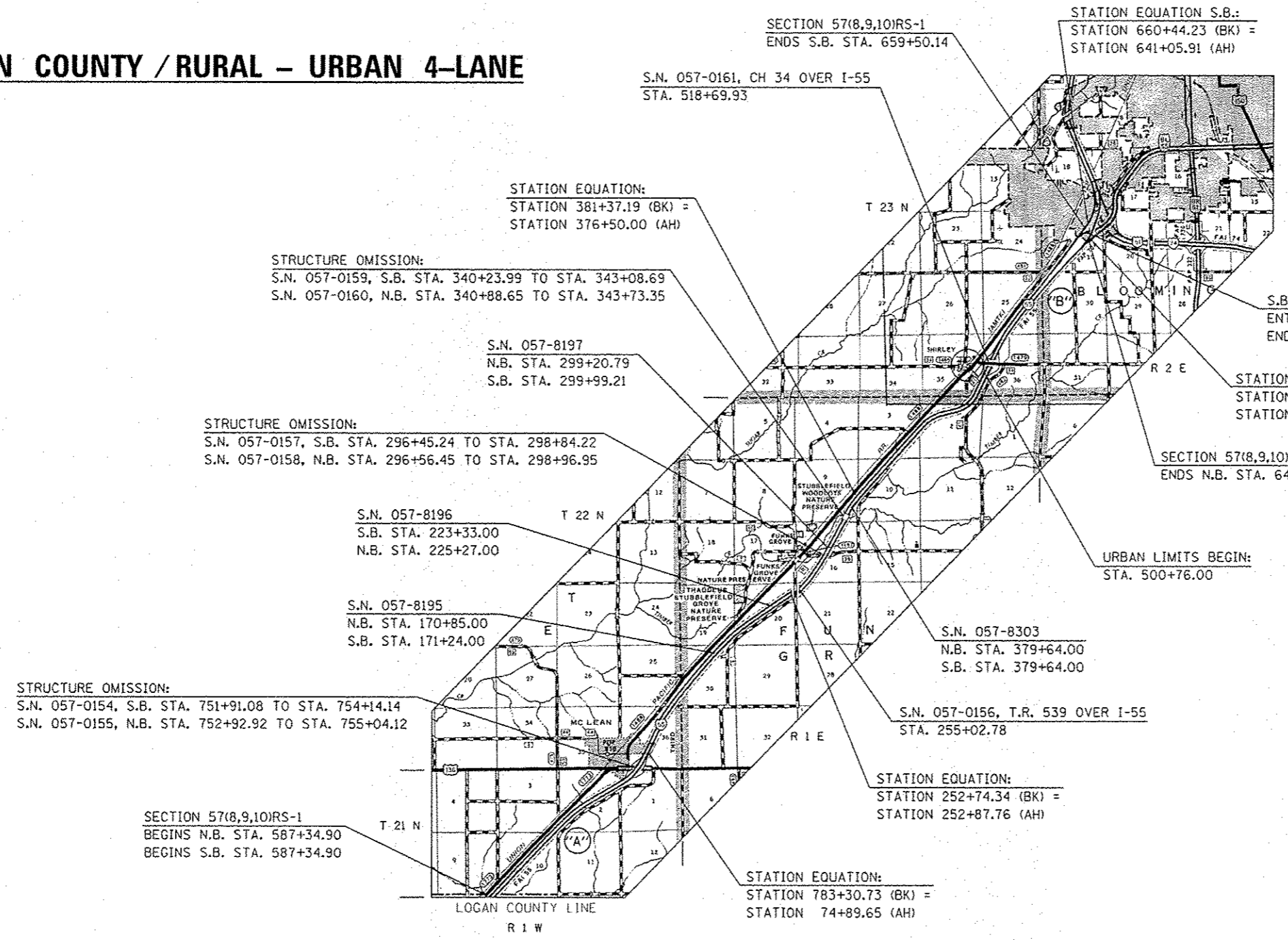
<b>LOCATION MAP #2</b>	
SCALE: NONE	SHEET 2 OF 2 SHEETS
STA.	TO STA.

F.A. RTE.	SECTION	COUNTY	TOTAL SHEETS	SHEET NO.
VAR.		MCLEAN	26	5
*05 CRACK & JOINT SEAL 2013-1		CONTRACT NO. 70981		
ILLINOIS FED. AID PROJECT				

# LOCATION MAP #3

## F.A.I. ROUTE 55 (I-55) FROM LOGAN CO. LINE TO I-74 AT BLOOMINGTON

### MCLEAN COUNTY / RURAL - URBAN 4-LANE



LOCATION	
3A: RURAL	STATION 587+34.90 TO STATION 500+76.00
3B: URBAN	STATION 500+76.00 TO STATION 659+50.14

TOWNSHIP:  
MOUNT HOPE, FUNK'S GROVE,  
DALE, BLOOMINGTON

TRAFFIC DATA LOCATIONS				
F.A.I. ROUTE 55				
LEG "A"	=	LOGAN COUNTY LINE TO US 136	=	20,400
LEG "B"	=	US 136 TO FAU 6434 (SHIRLEY)	=	23,000
LEG "C"	=	FAU 6434 (SHIRLEY TO JUST SOUTH OF I-74)	=	22,500

TOTAL LENGTH OF LOCATION 3 = 77,328.64 FEET = 14.646 MILES  
NET LENGTH OF LOCATION 3 = 76,592.24 FEET = 14.506 MILES  
(NOTE: LENGTHS ARE CALCULATED ALONG NORTHBOUND LANE)

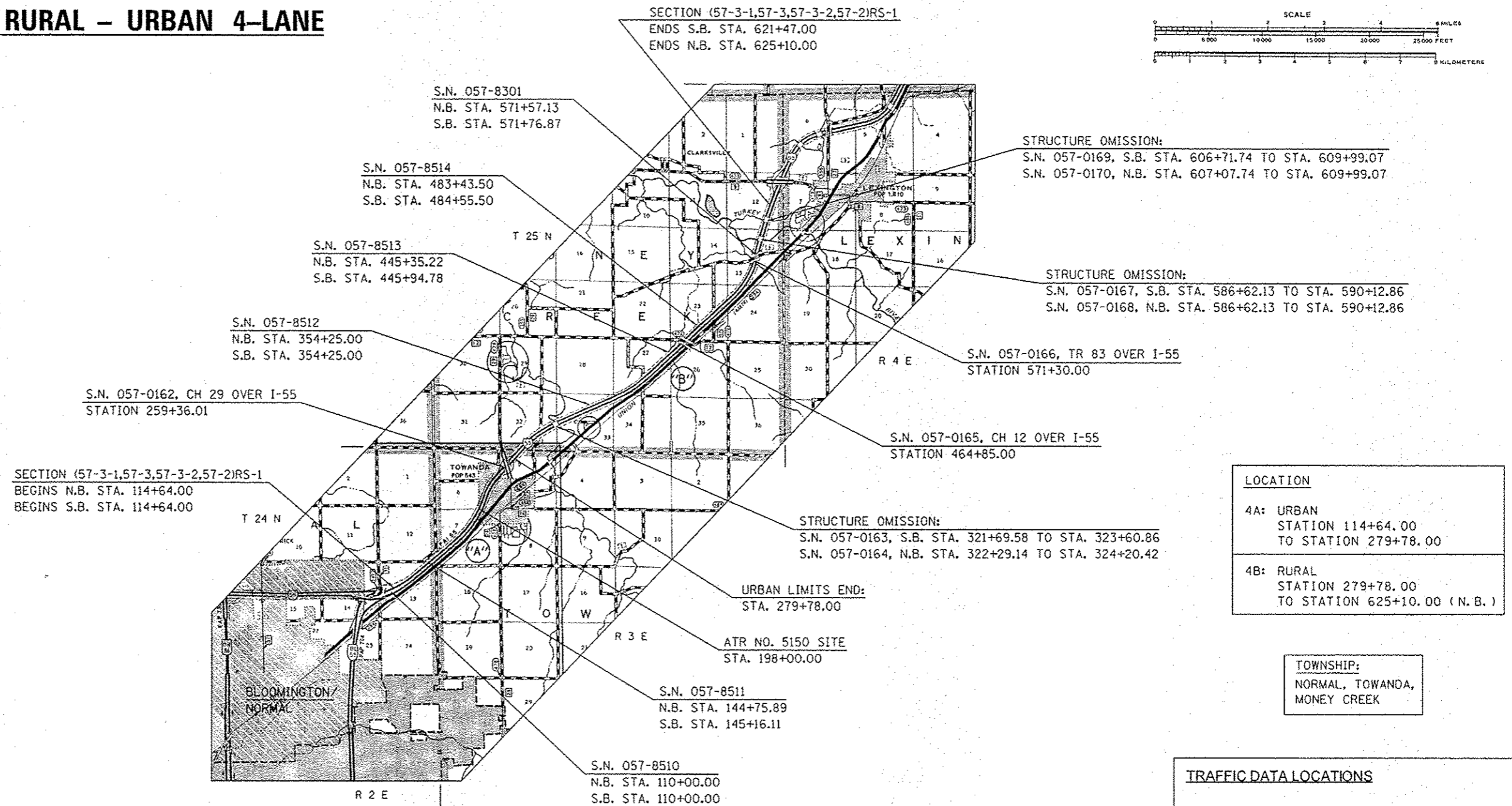
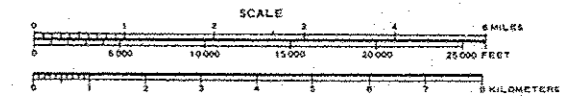
FILE NAME: c:\pwork\pwork\piersonbr\d0333862\0570901-ah-loc.maps.dgn	USER NAME: piersonbr	DESIGNED: -	REVISED: -	STATE OF ILLINOIS DEPARTMENT OF TRANSPORTATION	LOCATION MAP #3 - F.A.I. ROUTE 55			F.A. RTE.:	SECTION:	COUNTY:	TOTAL SHEETS:	SHEET NO.:
PLGT SCALE: 40.0000 / 1 in.	PLGT DATE: 2/1/2013	DRAWN: -	REVISED: -		SCALE: N/A	SHEET NO. 1 OF 1 SHEETS	STA. TO STA.	VAR:	*	MCLEAN	26	6
		CHECKED: -	REVISED: -					*05 CRACK & JOINT SEAL 2013-1				
		DATE: -	REVISED: -					ILLINOIS FED. AID PROJECT CONTRACT NO. 70981				



# LOCATION MAP #4

## F.A.I. ROUTE 55 (I-55) FROM BYPASS (N. OF I-55 BUSN) TO S. OF LEXINGTON

### MCLEAN COUNTY / RURAL - URBAN 4-LANE



LOCATION	
4A: URBAN	STATION 114+64.00 TO STATION 279+78.00
4B: RURAL	STATION 279+78.00 TO STATION 625+10.00 (N.B.)

TOWNSHIP:  
NORMAL, TOWANDA,  
MONEY CREEK

TRAFFIC DATA LOCATIONS				
F.A.I. ROUTE 55				
LEG "A"	=	I-55 BUSN AT NORMAL TO FAU 6431 INTERCHANGE AT TOWANDA		
LEG "B"	=	FAU 6431 INTERCHANGE AT TOWANDA TO FAS 473 INTERCHANGE AT LEXINGTON		

TOTAL LENGTH OF LOCATION 4 = 51,046.00 FEET = 9.668 MILES  
NET LENGTH OF LOCATION 4 = 50,212.66 FEET = 9.510 MILES  
(NOTE: LENGTHS ARE CALCULATED ALONG NORTHBOUND LANE)

FILE NAME: c:\pwork\p1\dot\p1\personbr\d0333862\0570981-shc-loc.mpa.dgn	USER NAME: p1personbr	DESIGNED: -	REVISED: -	<b>STATE OF ILLINOIS DEPARTMENT OF TRANSPORTATION</b>	<b>LOCATION MAP #4 - F.A.I. ROUTE 55</b>			F.A. RTE.:	SECTION:	COUNTY:	TOTAL SHEETS:	SHEET NO.:
		DRAWN: -	REVISED: -		SCALE: N/A	SHEET NO. 1 OF 1 SHEETS	STA. TO STA.	VAR.:		MCLEAN	26	7
		CHECKED: -	REVISED: -					*05 CRACK & JOINT SEAL 2013-1 CONTRACT NO. 70981				
		DATE: -	REVISED: -					[ILLINOIS] FED. AID PROJECT				

## GENERAL NOTES

G.N.-100  
ENGLISH UNITS OF MEASUREMENT SHALL GOVERN OVER AND SUPERSEDE ANY METRIC UNITS SHOWN IN THIS CONTRACT. WHERE INCLUDED, METRIC UNITS ARE FOR INFORMATION ONLY.

G.N.-100A  
ELECTRONIC FILES AND/OR ELECTRONIC SURVEY INFORMATION INCLUDING CADD FILES WILL NOT BE AVAILABLE TO THE CONTRACTOR.

G.N.-451 (SPECIAL)  
CRACK ROUTING AND FILLING CONSISTS OF BOTH LONGITUDINAL AND TRANSVERSE CRACKS. AN APPLICATION RATE OF 0.40 LBS. / FOOT WAS USED TO DETERMINE CRACK FILLING QUANTITIES.

NOTE:  
LOCATIONS ARE TO BE DONE IN THE ORDER GIVEN.  
THE INTENT OF THIS PROJECT IS TO ROUT & SEAL LONGITUDINAL AND TRANSVERSE CRACKS AS DESCRIBED AT EACH LOCATION LISTED BELOW. ANY CHANGES TO THE INTENT OF THE ROUTING AND SEALING OPERATIONS SHALL BE APPROVED IN ADVANCE BY THE ENGINEER.

**LOCATION #1**  
LONGITUDINAL CRACKS ALONG CENTERLINE AND BETWEEN PAVING LANES SHALL BE ROUTED AND SEALED. LONGITUDINAL CRACKS WITHIN PAVING LANES GREATER THAN 1/4" IN WIDTH SHALL BE ROUTED AND SEALED. TRANSVERSE CRACKS GREATER THAN OR EQUAL TO 1/4" IN WIDTH SHALL BE ROUTED AND SEALED. CRACKS IN PAVED SHOULDER, MAILBOX TURNOUTS AND ENTRANCES SHALL BE OMITTED.

LONGITUDINAL : 22,055 FOOT (ESTIMATED)  
TRANSVERSE : 3,190 FOOT (ESTIMATED)  
TOTAL : 25,245 FOOT (ESTIMATED)

**LOCATION #2**  
I-74 EB & I-74 WB SHALL BE COMPLETED BEFORE PROCEEDING TO I-55 SB, VETERAN'S PARKWAY AND RAMPS. LONGITUDINAL CRACKS ALONG CENTERLINE AND BETWEEN PAVING LANES SHALL BE ROUTED AND SEALED. LONGITUDINAL CRACKS BETWEEN EDGE OF PAVEMENT AND SHOULDER SHALL BE ROUTED AND SEALED. LONGITUDINAL CRACKS BETWEEN EDGE OF PAVEMENT AND RAMPS SHALL BE ROUTED AND SEALED. LONGITUDINAL CRACKS WITHIN PAVING LANES GREATER THAN 1/4" IN WIDTH SHALL BE ROUTED AND SEALED. LONGITUDINAL AND TRANSVERSE CRACKS ON THE RAMPS SHALL BE ROUTED AND SEALED. TRANSVERSE CRACKS GREATER THAN OR EQUAL TO 1/4" IN WIDTH SHALL BE ROUTED AND SEALED. CRACKS IN PAVED SHOULDERS AND MEDIAN Crossovers SHALL BE OMITTED.

LONGITUDINAL : 50,135 FOOT (ESTIMATED)  
TRANSVERSE : 1,980 FOOT (ESTIMATED)  
TOTAL : 52,115 FOOT (ESTIMATED)

**LOCATION #3**  
LONGITUDINAL CRACKS ALONG CENTERLINE SHALL BE ROUTED AND SEALED. LONGITUDINAL CRACKS BETWEEN EDGE OF PAVEMENT AND SHOULDER SHALL BE ROUTED AND SEALED. LONGITUDINAL CRACKS WITHIN PAVING LANES GREATER THAN 1/4" IN WIDTH SHALL BE ROUTED AND SEALED. TRANSVERSE CRACKS GREATER THAN OR EQUAL TO 1/4" IN WIDTH SHALL BE ROUTED AND SEALED. CRACKS IN PAVED SHOULDERS AND MEDIAN Crossovers SHALL BE OMITTED.

LONGITUDINAL : 316,450 FOOT (ESTIMATED)  
TRANSVERSE : 3500 FOOT (ESTIMATED)  
TOTAL : 319,950 FOOT (ESTIMATED)

**LOCATION #4**  
LONGITUDINAL CRACKS ALONG CENTERLINE SHALL BE ROUTED AND SEALED. LONGITUDINAL CRACKS BETWEEN EDGE OF PAVEMENT AND SHOULDER SHALL BE ROUTED AND SEALED. LONGITUDINAL CRACKS WITHIN PAVING LANES GREATER THAN 1/4" IN WIDTH SHALL BE ROUTED AND SEALED. TRANSVERSE CRACKS GREATER THAN OR EQUAL TO 1/4" IN WIDTH SHALL BE ROUTED AND SEALED. CRACKS IN PAVED SHOULDERS AND MEDIAN Crossovers SHALL BE OMITTED.

LONGITUDINAL : 228,400 FOOT (ESTIMATED)  
TRANSVERSE : 6200 FOOT (ESTIMATED)  
TOTAL : 234,600 FOOT (ESTIMATED)

**COMMITMENTS:**  
THERE ARE NO COMMITMENTS FOR THIS CONTRACT.

FILE NAME :	USER NAME : piersonbr	DESIGNED -	REVISED -	<b>STATE OF ILLINOIS DEPARTMENT OF TRANSPORTATION</b>	<b>GENERAL NOTES</b>	F.A. RTE.	SECTION	COUNTY	TOTAL SHEETS	SHEET NO.
c:\pwwork\pwwork\piersonbr\d0333062.dwg	0901-shr-gennote.dgn	DRAWN -	REVISED -			VAR.	*	MCLEAN	26	8
#MODELNAME#	PLOT SCALE : 48.0000' / 1" =	CHECKED -	REVISED -		SCALE: NONE	SHEET 1 OF 1 SHEETS		STA.	TO STA.	*D5 CRACK & JOINT SEAL 2013-1
	PLOT DATE : 2/17/2013	DATE -	REVISED -							CONTRACT NO. 70981
										ILLINOIS FED. AID PROJECT



LOCATION OF WORK:

LOCATION #1

LOCATION #2  
LOCATION #3B  
LOCATION #4A

LOCATION #3A  
LOCATION #4B

COUNTY:

F. A. P. 693  
MCLEAN  
RURAL

MCLEAN  
URBAN

MCLEAN  
RURAL

FUNDING BREAKOUT:

ROUT & SEAL  
100% STATE

ROUT & SEAL  
100% STATE

ROUT & SEAL  
100% STATE

CONSTRUCTION TYPE CODE:

0005

0005

0005

CODE NO.	ITEM	UNIT	TOTAL QUANTITY	QUANTITY	QUANTITY	QUANTITY
45100100	CRACK ROUTING (PAVEMENT)	FOOT	631910.0	25245.0	226745.0	379920.0
45100200	CRACK FILLING	POUND	252764.0	10098.0	90698.0	151968.0
67100100	MOBILIZATION	L SUM	1.0	0.1	0.4	0.5
70100310	TRAFFIC CONTROL AND PROTECTION, STANDARD 701421	L SUM	1.0		0.4	0.6
70100420	TRAFFIC CONTROL AND PROTECTION, STANDARD 701411	EACH	42.0		34.0	8.0
70100460	TRAFFIC CONTROL AND PROTECTION, STANDARD 701306	L SUM	1.0	1.0		
70100700	TRAFFIC CONTROL AND PROTECTION, STANDARD 701406	L SUM	1.0		0.4	0.6
70100815	TRAFFIC CONTROL AND PROTECTION, STANDARD 701446	L SUM	1.0			1.0
78001110	PAINT PAVEMENT MARKING - LINE 4"	FOOT	226190.0	3600.0	126950.0	95640.0
X7015005	CHANGEABLE MESSAGE SIGN	CAL DA	24.0		18.0	6.0

10

• SPECIALTY ITEMS

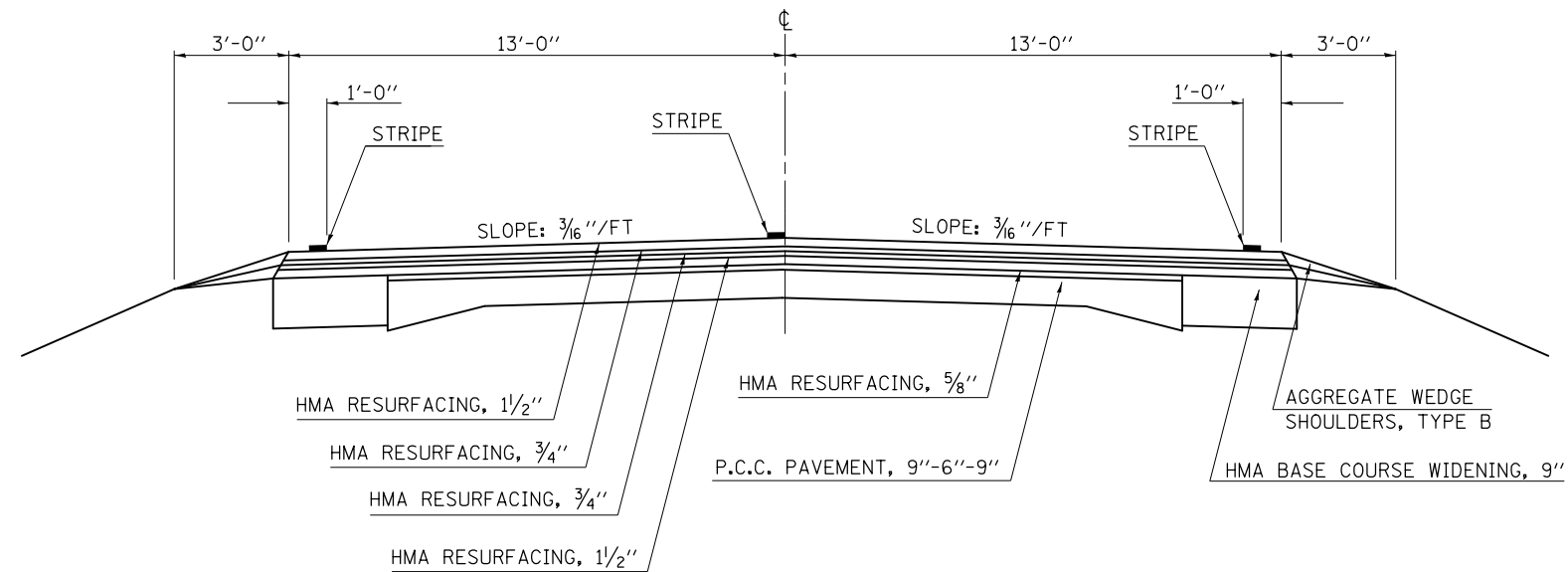
FILE NAME : c:\pwork\pwork\personb\0333662\09	USER NAME : personb	DESIGNED - DRAWN -	REVISED - REVISED -	STATE OF ILLINOIS DEPARTMENT OF TRANSPORTATION	SUMMARY OF QUANTITIES				F.A. RTE.	SECTION	COUNTY	TOTAL SHEETS	SHEET NO.
		CHECKED - DATE -	REVISED - REVISED -						VAR.		MCLEAN	26	9
MODEL NAME :	PLOT SCALE : 40.0000 1/1 in.				SCALE:	SHEET	OF	SHEETS	STA.	TO STA.	DS CRACK & JOINT SEAL 2013-1 CONTRACT NO. 70981 ILLINOIS FED. AID PROJECT		

# 1 EXISTING TYPICAL CROSS SECTION

F.A.P. ROUTE 693 (IL 9)

LOCATION #1

STATION TO STATION  
1700+00.00 1661+39.20 ②



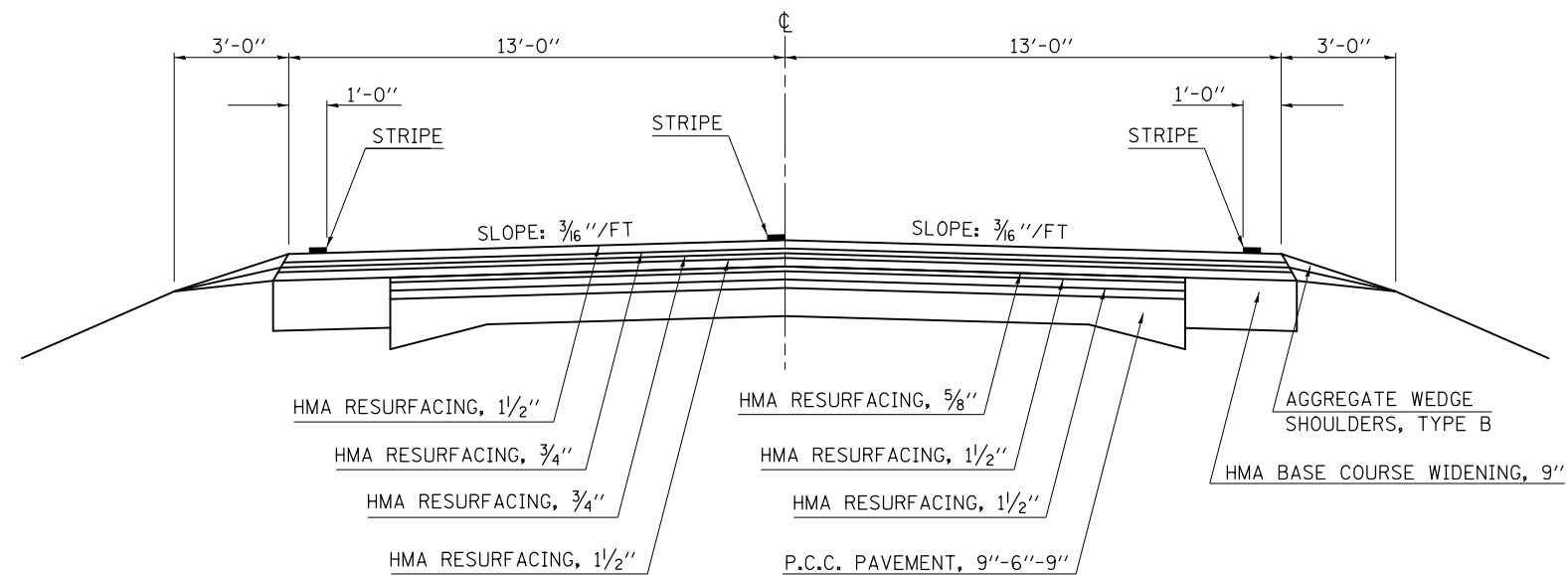
\*NOTE:  
STATIONING CHANGES DIRECTIONS AND DECREASES  
FROM STA. 2018+00.00 (AH) TO STA. 1565+44.00

# 2 EXISTING TYPICAL CROSS SECTION

F.A.P. ROUTE 693 (IL 9)

LOCATION #1

STATION TO STATION  
\* ① 1661+39.20 1565+44.00



\*NOTE:  
STATIONING CHANGES DIRECTIONS AND DECREASES  
FROM STA. 2018+00.00 (AH) TO STA. 1565+44.00

STRUCTURE OMISSIONS:  
STA. 1646+98.35 TO STA. 1647+24.84 (S. N. 057-0077)  
STA. 1608+90.10 TO STA. 1609+09.64 (S. N. 057-0139)

STATION EQUATION:  
STA. 1658+32.57 (BK) = STA. 1658+28.53 (AH)

FILE NAME =	USER NAME = ppersonbr	DESIGNED -	REVISED -	<b>STATE OF ILLINOIS DEPARTMENT OF TRANSPORTATION</b>	<b>EXISTING TYPICAL CROSS SECTIONS LOCATION #1</b>			F.A. RTE.	SECTION	COUNTY	TOTAL SHEETS	SHEET NO.
et:\pwork\pwork\pwork\ppersonbr\d0333862\05	0981-sh1-typicals.dgn	DRAWN -	REVISED -					VAR.		MCLEAN	26	10
	PLOT SCALE = 40.0000' / in.	CHECKED -	REVISED -		SCALE:			•D5 CRACK & JOINT SEAL 2013-1				
*MODELNAME*	PLOT DATE = 2/1/2013	DATE -	REVISED -		SHEET 1 OF 1 SHEETS			CONTRACT NO. 70981				

ILLINOIS FED. AID PROJECT

STATION EQUATION:  
 STA. 673+50.00 (BK) = STA. 670+00.00 (AH)

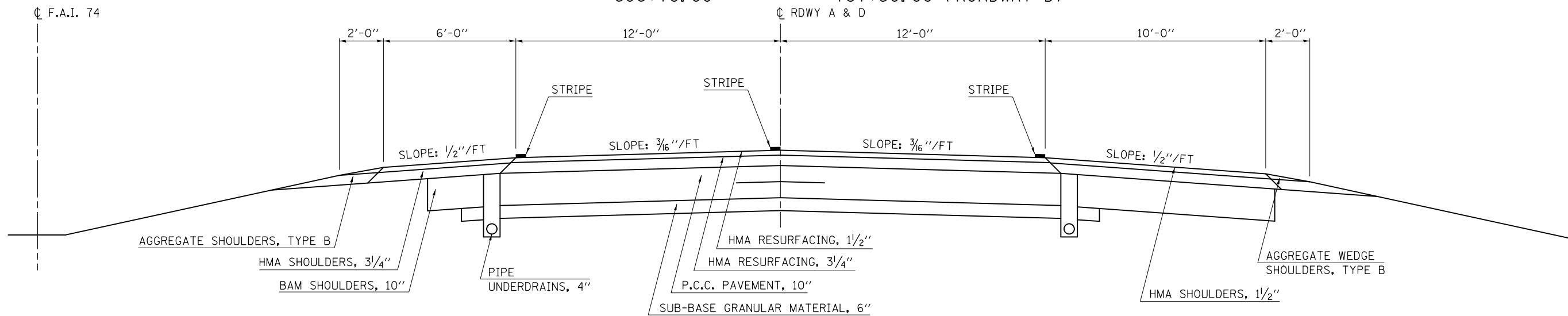
# 1 EXISTING TYPICAL CROSS SECTION

STRUCTURE OMISSIONS:  
 STA. 718+74.77 TO STA. 720+52.36 (S.N. 057-0048)  
 STA. 718+77.72 TO STA. 720+55.30 (S.N. 057-0047)

## F.A.I. ROUTE 74 (I-74)

### LOCATION #2

STATION TO STATION  
 602+97.00 737+50.00 (ROADWAY A)  
 606+78.00 737+50.00 (ROADWAY D)

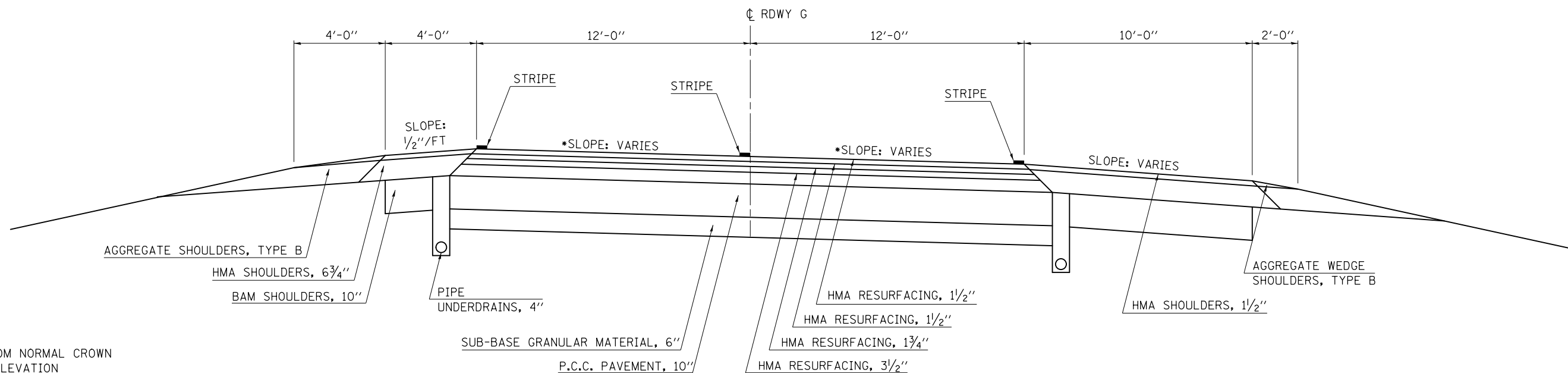


# 2 EXISTING TYPICAL CROSS SECTION

## F.A.I. ROUTE 55 SB (I-55 SB)

### LOCATION #2

STATION TO STATION  
 602+97.00 642+00.00 (ROADWAY G)



\*NOTE:  
 SLOPE VARIES FROM NORMAL CROWN  
 TO 0.013% SUPERELEVATION

FILE NAME =	USER NAME = ppersonbr	DESIGNED -	REVISED -	<b>STATE OF ILLINOIS DEPARTMENT OF TRANSPORTATION</b>	<b>EXISTING TYPICAL CROSS SECTIONS LOCATION #2</b>			F.A. RTE.	SECTION	COUNTY	TOTAL SHEETS	SHEET NO.	
et:\pwork\pwork\personbr\d0333862\05	0981-sh-typical.dgn	DRAWN -	REVISED -		SCALE:	SHEET 1	OF 2	SHEETS	STA.	TO STA.	MCLEAN	26	11
	PLOT SCALE = 40.0000' / in.	CHECKED -	REVISED -					•D5 CRACK & JOINT SEAL 2013-1		CONTRACT NO. 70981			
*MODELNAME#	PLOT DATE = 2/1/2013	DATE -	REVISED -					ILLINOIS FED. AID PROJECT					

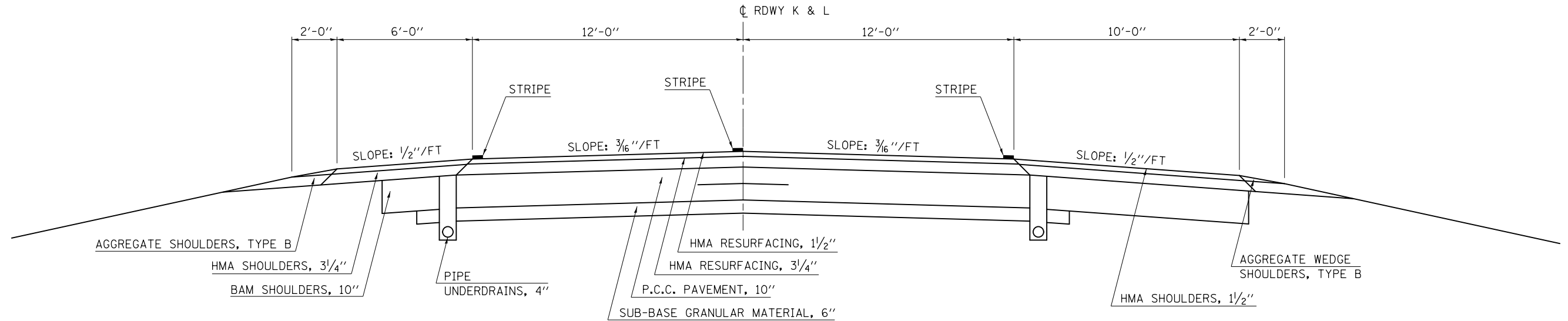
### 3 EXISTING TYPICAL CROSS SECTION

#### VETERAN'S PARKWAY NB & SB

#### LOCATION #2

STATION	TO	STATION
29+05.00		83+44.00 (RDWY K)
32+65.00		84+12.00 (RDWY L)

STRUCTURE OMISSIONS:	
STA. 51+48.41 TO STA. 53+03.64 (S. N. 057-0062)	
STA. 51+90.34 TO STA. 53+39.73 (S. N. 057-0061)	
STA. 57+30.63 TO STA. 58+79.47 (S. N. 057-0060)	
STA. 57+36.92 TO STA. 58+81.64 (S. N. 057-0059)	



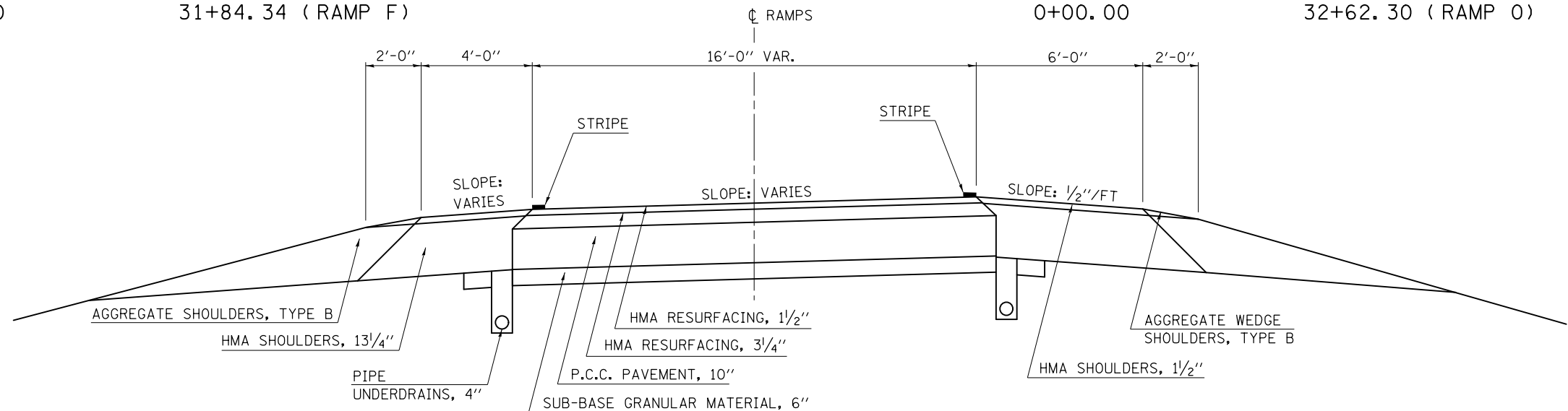
### 4 EXISTING TYPICAL CROSS SECTION

#### F.A.I. ROUTE 74 (I-74)

#### LOCATION #2

U. S. ROUTE 51 RAMPS		
STATION	TO	STATION
13+18.00		31+97.26 (RAMP A)
44+29.00		62+40.00 (RAMP B)
5+36.00		23+90.00 (RAMP C)
13+40.00		31+89.27 (RAMP D)
3+58.87		21+28.00 (RAMP E)
13+77.00		31+84.34 (RAMP F)

VETERAN'S PARKWAY RAMPS		
STATION	TO	STATION
16+56.17		36+99.51 (RAMP E)
9+92.00		28+50.22 (RAMP F)
0+00.00		22+68.96 (RAMP J)
30+00.00		57+76.00 (RAMP M)
0+00.00		29+36.19 (RAMP N)
0+00.00		32+62.30 (RAMP O)



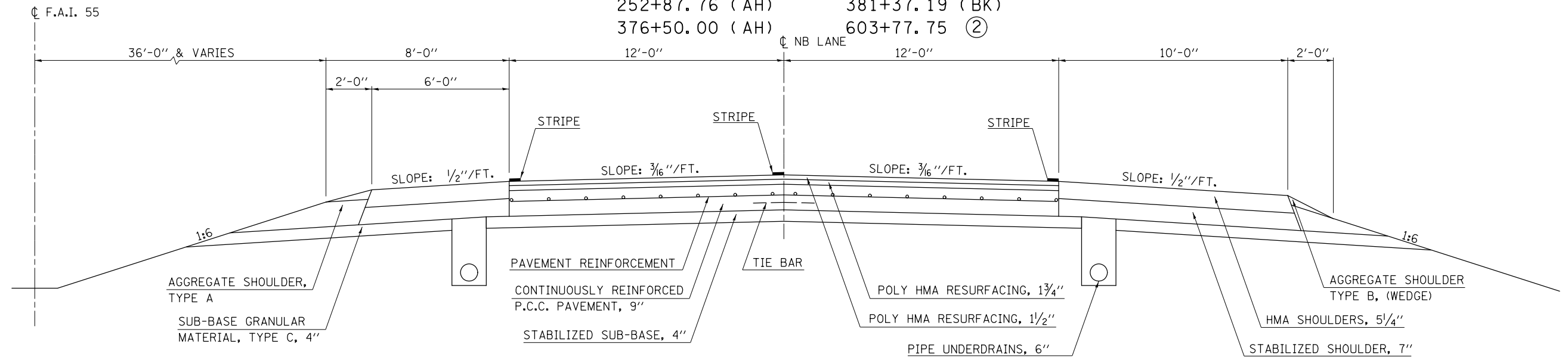
# 1 EXISTING TYPICAL CROSS SECTION

## F.A.I. ROUTE 55 NORTHBOUND

### LOCATION #3

**STRUCTURE OMISSIONS**  
 STATION 752+92.92 TO STATION 755+04.12; S.N. 057-0155  
 STATION 296+56.45 TO STATION 298+96.95; S.N. 057-0158  
 STATION 340+88.65 TO STATION 343+73.35; S.N. 057-0160

STATION	TO	STATION
587+34.90		783+30.73 (BK)
74+89.65 (AH)		252+74.34 (BK)
252+87.76 (AH)		381+37.19 (BK)
376+50.00 (AH)		603+77.75 (2)

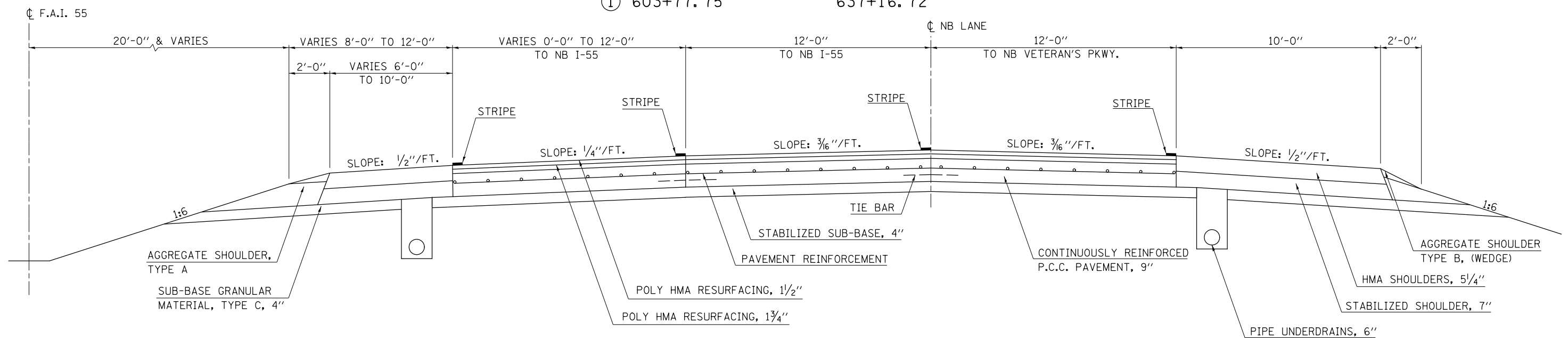


# 2 EXISTING TYPICAL CROSS SECTION

## F.A.I. ROUTE 55 NORTHBOUND

### LOCATION #3

STATION	TO	STATION
① 603+77.75		637+16.72





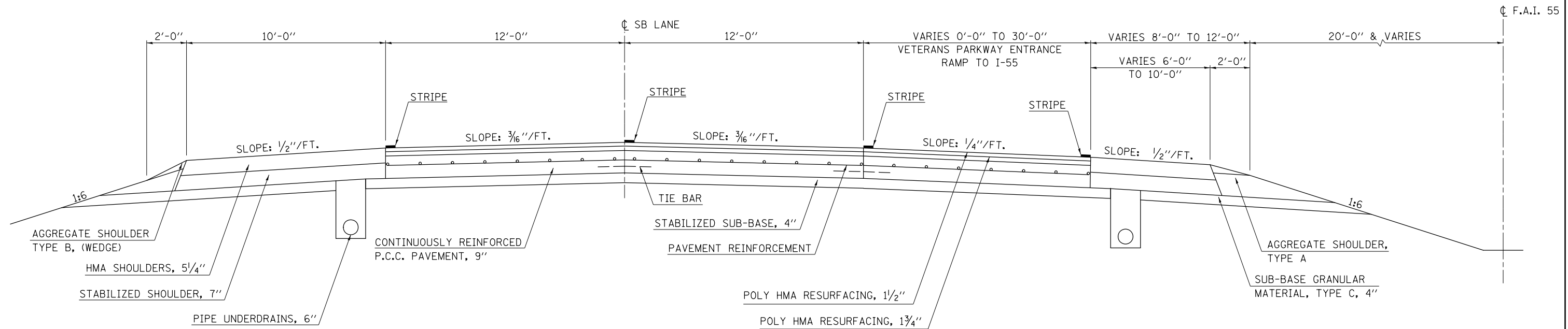


# 5 EXISTING TYPICAL CROSS SECTION

## F.A.I. ROUTE 55 SOUTHBOUND

### LOCATION #3

STATION TO STATION  
 (4) 613+90.99 TO 648+11.82 (4)



FILE NAME =	USER NAME = ppersonbr	DESIGNED -	REVISED -
ci:\pw\work\p\pidot\ppersonbr\d0333862\05	0981-sh-t-Typicals.dgn	DRAWN -	REVISED -
	PLOT SCALE = 40.0000' / in.	CHECKED -	REVISED -
#MODELNAME#	PLOT DATE = 2/1/2013	DATE -	REVISED -

**STATE OF ILLINOIS  
DEPARTMENT OF TRANSPORTATION**

**EXISTING TYPICAL CROSS SECTIONS  
LOCATION #3**

SCALE: SHEET 3 OF 3 SHEETS STA. TO STA.

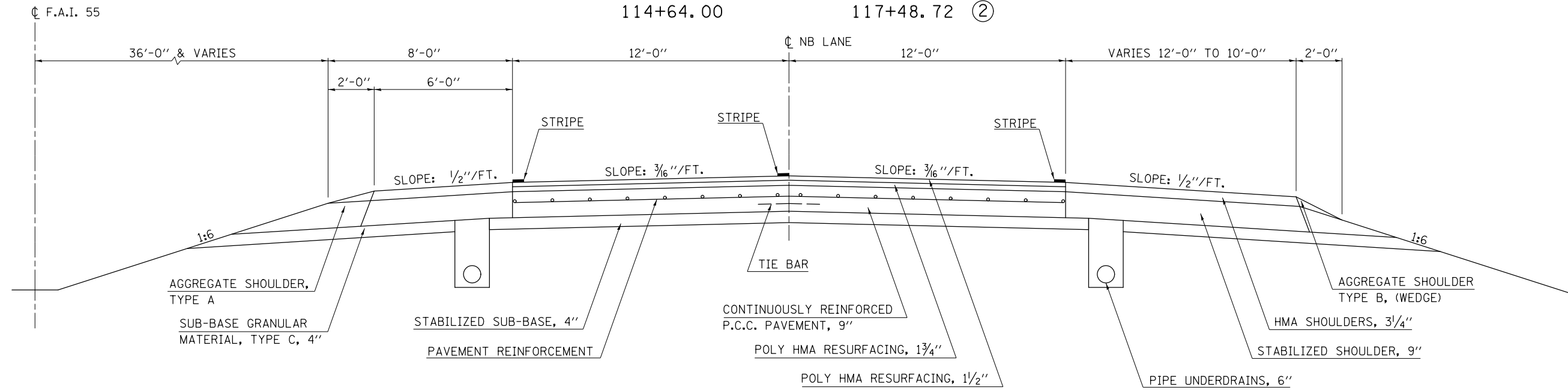
F.A. RTE.	SECTION	COUNTY	TOTAL SHEETS	SHEET NO.
VAR.	•	MCLEAN	26	15
•D5 CRACK & JOINT SEAL 2013-1			CONTRACT NO. 70981	
ILLINOIS FED. AID PROJECT				

# 1 EXISTING TYPICAL CROSS SECTION

## F.A.I. ROUTE 55 NORTHBOUND

### LOCATION #4

STATION 114+64.00 TO STATION 117+48.72 ②

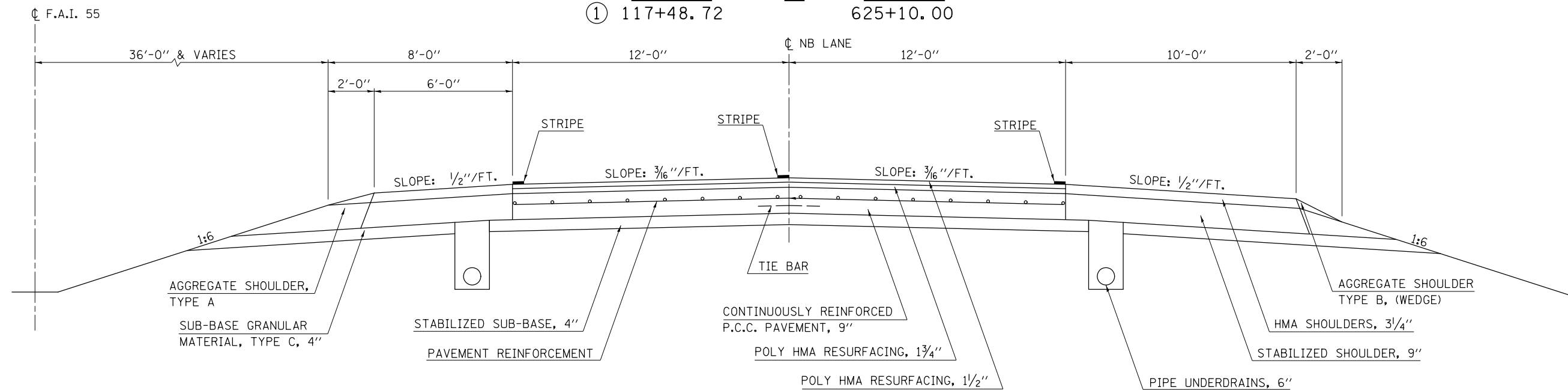


# 2 EXISTING TYPICAL CROSS SECTION

## F.A.I. ROUTE 55 NORTHBOUND

### LOCATION #4

STATION ① 117+48.72 TO STATION 625+10.00



**STRUCTURE OMISSIONS**  
 STATION 322+29.14 TO STATION 324+20.42; S.N. 057-0164  
 STATION 586+62.13 TO STATION 590+12.86; S.N. 057-0167  
 STATION 607+07.74 TO STATION 609+99.07; S.N. 057-0170

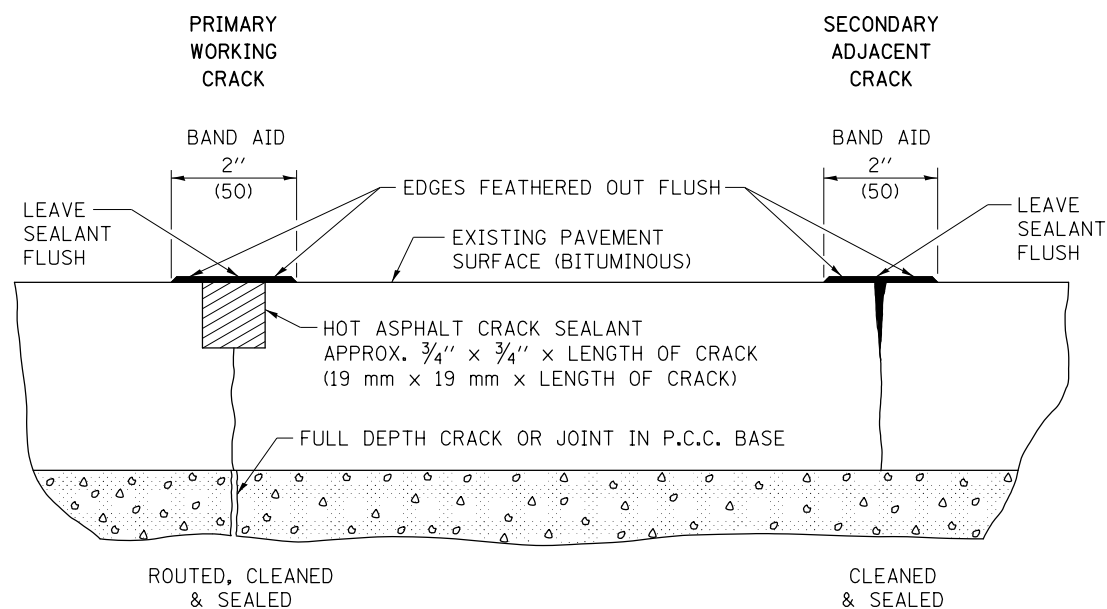
FILE NAME =	USER NAME = ppersonbr	DESIGNED -	REVISED -	<b>STATE OF ILLINOIS DEPARTMENT OF TRANSPORTATION</b>	<b>EXISTING TYPICAL CROSS SECTIONS LOCATION #4</b>			F.A. RTE.	SECTION	COUNTY	TOTAL SHEETS	SHEET NO.
et:\pwork\work\pwork\personbr\d0333862\050981-sh1-typicals.dgn	PLOT SCALE = 40.0000' / in.	DRAWN -	REVISED -					VAR.		MCLEAN	26	16
*MODELNAME*	PLOT DATE = 2/1/2013	CHECKED -	REVISED -		SCALE: SHEET 1 OF 2 SHEETS STA. TO STA.			•D5 CRACK & JOINT SEAL 2013-1 CONTRACT NO. 70981				
		DATE -	REVISED -					ILLINOIS FED. AID PROJECT				



CODE NO.	ITEM	UNIT	LOCATION OF WORK:	LOCATION #1	LOCATION #2	LOCATION #3A	LOCATION #3B	LOCATION #4A	LOCATION #4B
				FAP 693 ( IL 9)	FAI 74 ( I-74)	FAI 55 ( I-55)	FAI 55 ( I-55)	FAI 55 ( I-55)	FAI 55 ( I-55)
			COUNTY:	MCLEAN RURAL	MCLEAN URBAN	MCLEAN RURAL	MCLEAN URBAN	MCLEAN URBAN	MCLEAN RURAL
						STA. 587+34.90 TO STA. 500+76.00	STA. 500+76.00 TO STA. 659+50.14	STA. 114+64.00 TO STA. 279+78.00	STA. 279+78.00 TO STA. 625+10.00 (NB)
				QUANTITY	QUANTITY	QUANTITY	QUANTITY	QUANTITY	QUANTITY
45100100	CRACK ROUTING ( PAVEMENT)	FOOT		25245.0	52115.0	229160.0	90790.0	83840.0	150760.0
45100200	CRACK FILLING	POUND		10098.0	20846.0	91664.0	36316.0	33536.0	60304.0
67100100	MOBILIZATION	L SUM		0.1	0.2	0.3	0.1	0.1	0.2
70100310	TRAFFIC CONTROL AND PROTECTION, STANDARD 701421	L SUM				0.3	0.2	0.2	0.3
70100420	TRAFFIC CONTROL AND PROTECTION, STANDARD 701411	EACH			18.0	8.0	8.0	8.0	
70100460	TRAFFIC CONTROL AND PROTECTION, STANDARD 701306	L SUM		1.0					
70100700	TRAFFIC CONTROL AND PROTECTION, STANDARD 701406	L SUM				0.3	0.2	0.2	0.3
70100815	TRAFFIC CONTROL AND PROTECTION, STANDARD 701446	L SUM					0.5	0.5	
78001110	PAINT PAVEMENT MARKING - LINE 4"	FOOT		3600.0	34250.0	21320.0	42250.0	50450.0	74320.0
X7015005	CHANGEABLE MESSAGE SIGN	CAL DA			12.0	3.0	3.0	3.0	3.0

### HMA PAVEMENT

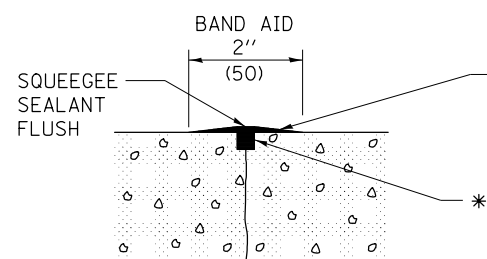
(USE PAY ITEMS : 45100100 CRACK ROUTING (PAVEMENT)  
AND 45100200 CRACK FILLING)



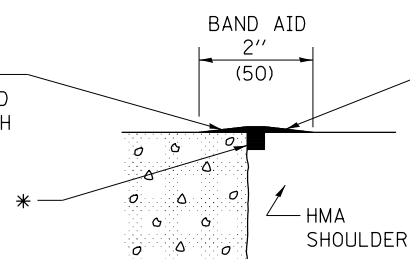
### PCC PAVEMENT

(USE PAY ITEMS : 45200100 JOINT OR CRACK ROUTING (P.C.C. PAVEMENT & SHOULDER)  
AND 45200300 JOINT OR CRACK FILLING)

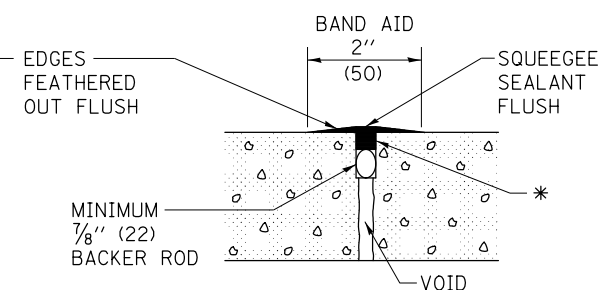
#### TRANSVERSE CRACKS AND JOINTS AND CENTERLINE JOINT



#### LONGITUDINAL SHOULDER JOINT

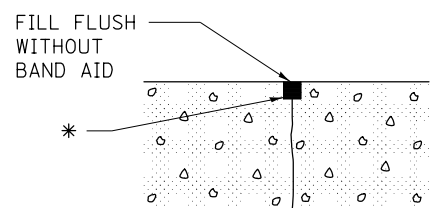


#### ANY WIDE LONGITUDINAL JOINT OR CRACK

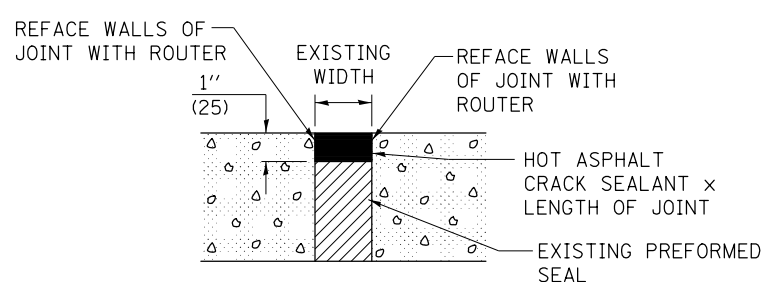


\* HOT ASPHALT CRACK SEALANT  
APPROX. 3/4 \" x 3/4 \" x LENGTH OF CRACK.  
ACTUAL QUANTITY WILL VARY AS NEEDED FOR  
PRIMARY OR SECONDARY WORKING CRACK.

#### LONGITUDINAL RANDOM CRACK



#### TRANSVERSE EXPANSION JOINT



Note: All dimensions are in INCHES  
(millimeters) unless otherwise shown.

FILE NAME =	USER NAME = ppersonbr	DESIGNED -	REVISED -
et:\pw\work\p\dot\personbr\d0333862\05	0981-Shit-Details.dgn	DRAWN -	REVISED -
	PLOT SCALE = 40.0000 ' / in.	CHECKED -	REVISED -
\$MODELNAME\$	PLOT DATE = 2/1/2013	DATE -	REVISED -

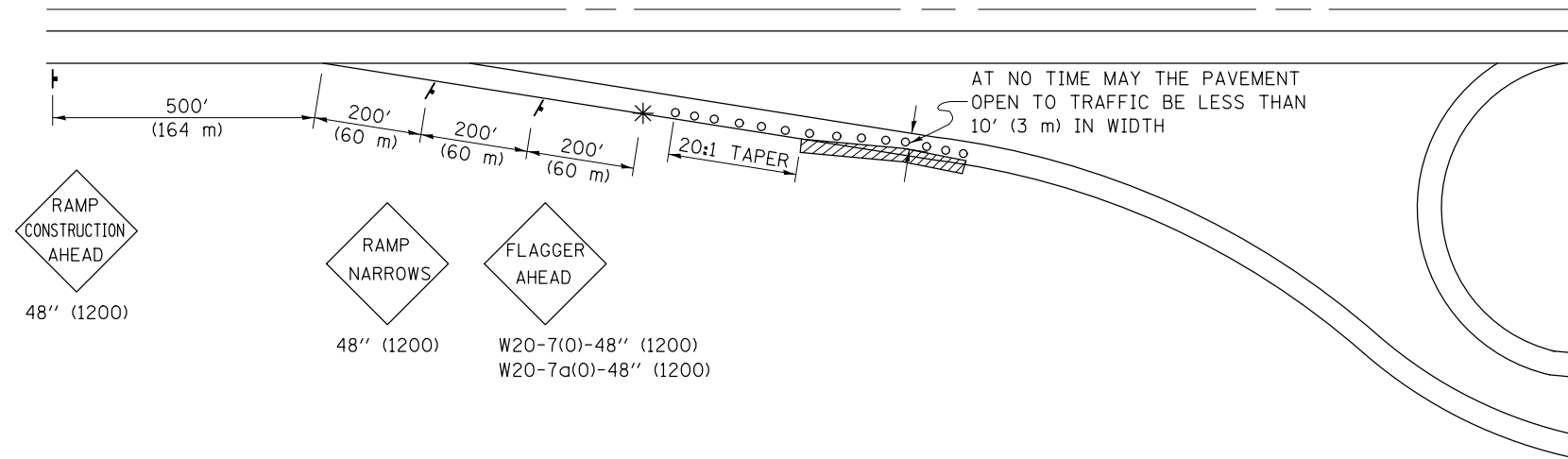
STATE OF ILLINOIS  
DEPARTMENT OF TRANSPORTATION

CRACK AND JOINT SEALING

SCALE: SHEET OF SHEETS STA. TO STA.

<b>DISTRICT 5 DETAIL NO. 45AAAAAA</b>				
F.A. RTE.	SECTION	COUNTY	TOTAL SHEETS	SHEET NO.
VAR.		MCLEAN	26	19
D5 CRACK & JOINT SEAL 2013-1			CONTRACT NO. 70981	
ILLINOIS FED. AID PROJECT				

**APPLICATION NO. 1  
DAY OPERATION ONLY  
PARTIAL RAMP CLOSURE**



GENERAL NOTES

CONSTRUCTION OPERATIONS SHALL BE CONFINED TO AN AREA NARROW ENOUGH THAT A MINIMUM OF 10' (3 m) OF PAVEMENT SHALL BE OPEN TO TRAFFIC AT ALL TIMES.

FULL WIDTH PAVEMENT ON THE RAMPS SHALL BE OPEN TO TRAFFIC AT NIGHT.

WHEN NO WORK IS BEING PERFORMED, THE FLAGGER WILL NOT BE REQUIRED. IF THE FLAGGER IS NOT PRESENT, THE FLAGGER SIGNS SHALL BE REMOVED OR COVERED.

ALL SIGNS SHALL BE POST MOUNTED IF WORK IN THE AREA EXCEEDS FOUR DAYS OF DAYTIME OPERATIONS.

LONGITUDINAL DIMENSIONS MAY BE ADJUSTED SLIGHTLY TO FIT FIELD CONDITIONS.

ALL VEHICLES, EQUIPMENT, WORKERS (EXCEPT FLAGGER) AND THEIR ACTIVITIES ARE RESTRICTED AT ALL TIMES TO ONE SIDE OF THE PAVEMENT UNLESS OTHERWISE AUTHORIZED BY THE DISTRICT ENGINEER.

SYMBOLS

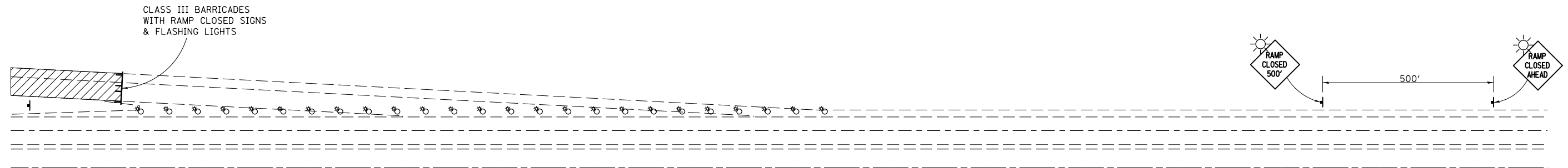
- (APPLICATION NO. 1) TYPE I OR II BARRICADES OR DRUMS @ 50' (15 m) CTS.
- ⊗ (APPLICATION NO. 2) TYPE I OR II BARRICADES OR DRUMS @ 25' (7.5 m) CTS. W/STEADY BURNING LIGHTS
- \* (APPLICATION NO. 1) FLAGGER PLACED AS DIRECTED BY THE ENGINEER
- † SIGN ON PORTABLE OR PERMANENT SUPPORT
- ▨ WORK AREA

TYPICAL APPLICATIONS

- PAVEMENT PATCHING
- PIPE UNDERDRAINS
- HMA RESURFACING

Traffic Control for all ramps shall be in accordance with the appropriate application of plan detail **TRAFFIC CONTROL FOR RAMPS** and will not be paid for separately, but shall be included in the contract lump sum prices for Traffic Control and Protection, Standard 701401 and Traffic Control and Protection, Standard 701406.

**APPLICATION NO. 2  
RAMP CLOSURE**



GENERAL NOTES

STEADY BURN LIGHTS ARE NOT REQUIRED FOR DAYTIME OPERATIONS.

CONTACT THE DISTRICT TRAFFIC OPERATIONS ENGINEER AT 217-465-4181, ONE WEEK PRIOR TO CLOSING THE RAMP.

Note: All dimensions are in INCHES (millimeters) unless otherwise shown.

FILE NAME =	USER NAME = ppersonbr	DESIGNED -	REVISED -
et:\pwork\pwork\personbr\d0333862\050981-Sht-Details.dgn		DRAWN -	REVISED -
\$MODELNAME\$	PLOT SCALE = 40.0000' / in.	CHECKED -	REVISED -
	PLOT DATE = 2/1/2013	DATE -	REVISED -

**STATE OF ILLINOIS  
DEPARTMENT OF TRANSPORTATION**

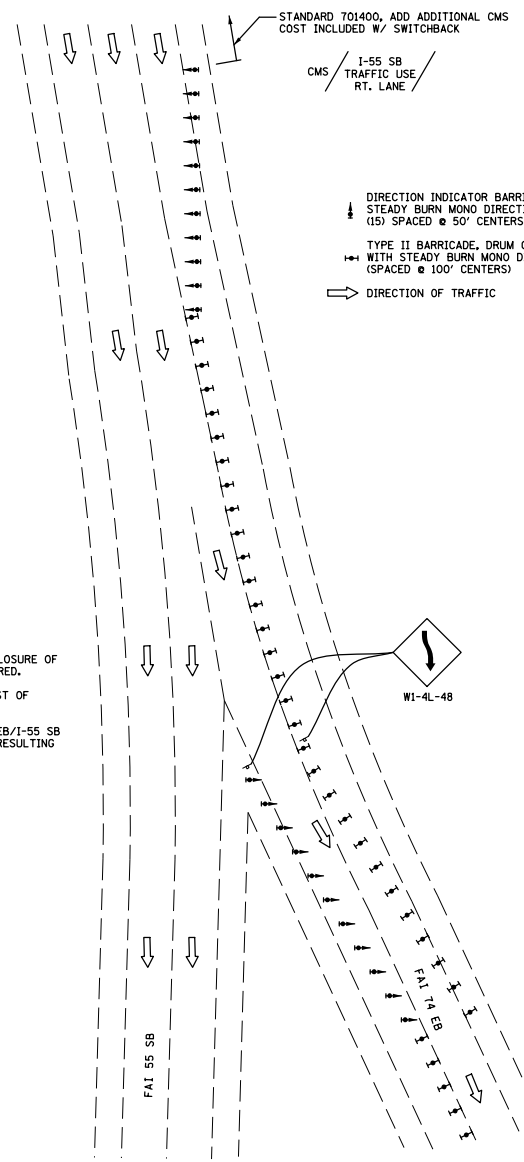
**TRAFFIC CONTROL FOR RAMPS**

SCALE: SHEET OF SHEETS STA. TO STA.

**DISTRICT 5 DETAIL NO. 70103710**

F.A. RTE.	SECTION	COUNTY	TOTAL SHEETS	SHEET NO.
VAR.		MCLEAN	26	20
• D5 CRACK & JOINT SEAL 2013-1			CONTRACT NO. 70981	
ILLINOIS FED. AID PROJECT				





STANDARD 701400, ADD ADDITIONAL CMS COST INCLUDED W/ SWITCHBACK  
 CMS / I-55 SB TRAFFIC USE / RT. LANE /

↓ DIRECTION INDICATOR BARRICADE WITH STEADY BURN MONO DIRECTIONAL LIGHT (15' SPACED @ 50' CENTERS)  
 ⇄ TYPE II BARRICADE, DRUM OR VERTICAL BARRICADE WITH STEADY BURN MONO DIRECTIONAL LIGHT (SPACED @ 100' CENTERS)  
 ⇨ DIRECTION OF TRAFFIC

- NOTES:  
 1. THIS DETAIL IS TO BE USED WHEN CLOSURE OF THE I-74 EB DRIVING LANE IS REQUIRED.  
 2. SWITCHBACK DETAIL INCLUDED IN COST OF STANDARD 701406.  
 3. INTERIOR LANES UPSTREAM OF I-74 EB/I-55 SB SPLIT MAY NOT BE CLOSED DUE TO RESULTING TRAFFIC QUEUE LENGTHS.

W1-4L-48

I-74 EB SWITCHBACK DETAIL

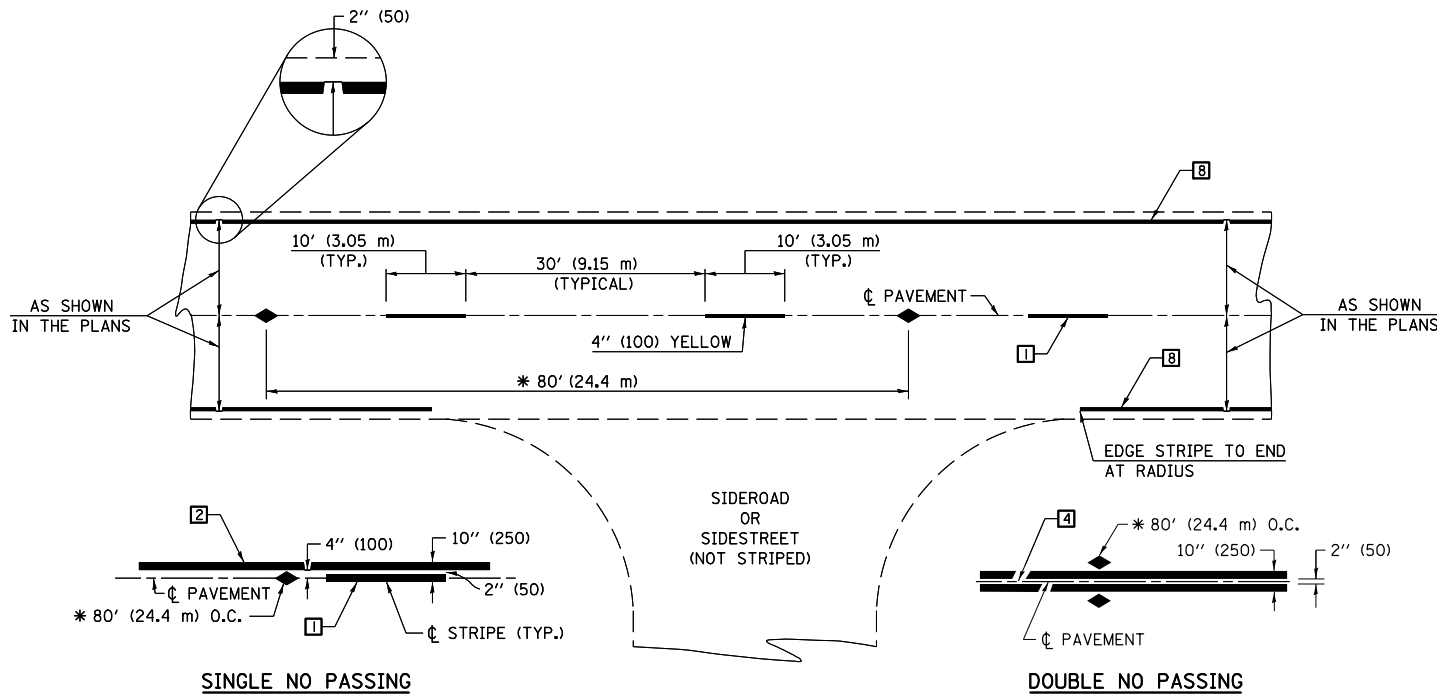
FILE NAME =	USER NAME = piersonbr	DESIGNED -	REVISED -
ct:\pw\work\p\idot\piersonbr\d0333862\05	0981-Shit-Details.dgn	DRAWN -	REVISED -
\$MODELNAME\$	PLOT SCALE = 40.0000' / in.	CHECKED -	REVISED -
	PLOT DATE = 2/1/2013	DATE -	REVISED -

STATE OF ILLINOIS  
 DEPARTMENT OF TRANSPORTATION

I-74 EB SWITCH BACK DETAIL

SCALE: SHEET OF SHEETS STA. TO STA.

F.A. RTE.	SECTION	COUNTY	TOTAL SHEETS	SHEET NO.
VAR.	•	MCLEAN	26	21
• D5 CRACK & JOINT SEAL 2013-1		CONTRACT NO.	70981	
ILLINOIS FED. AID PROJECT				



\* REDUCE TO 40' (12.2 m) O.C. ON CURVES WITH POSTED OR ADVISORY SPEEDS OF 45 mph (70 km/h) OR LESS.

**TWO LANE/TWO WAY**

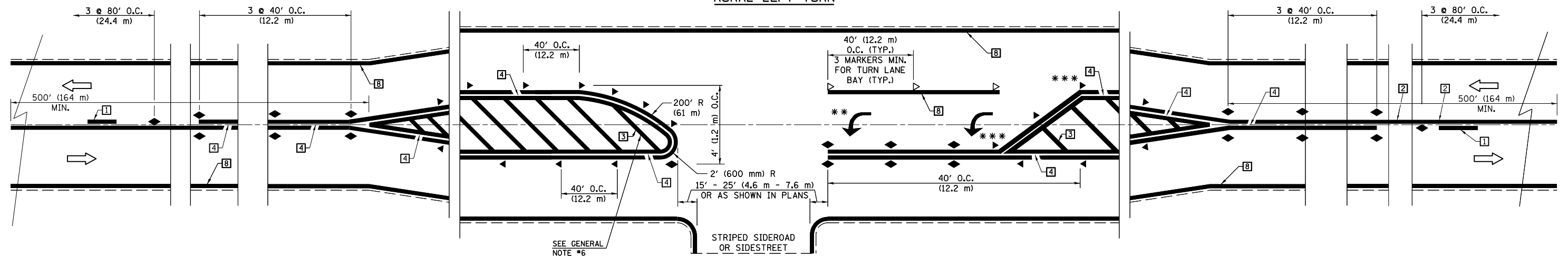
**TYPICAL PAVEMENT MARKING LEGEND**

- 1 4" (100) SKIP-DASH (YELLOW)
- 2 4" (100) SOLID (YELLOW)
- 3 12" (300) DIAGONAL (YELLOW)
- 4 4" (100) DOUBLE YELLOW (NARROW)
- 5 RESERVED
- 6 RESERVED
- 7 4" (100) SKIP-DASH (WHITE)
- 8 4" (100) SOLID (WHITE)
- 9 12" (300) DIAGONAL (WHITE)
- 10 6" (150) SOLID (WHITE)
- 11 24" (600) STOP BAR (WHITE)
- 12 8" (200) SOLID (WHITE)
- 13 4" (100) LANE LINE EXTENSIONS (WHITE)
- 14 4" (100) PARKING WHITE

**TYPICAL PAVEMENT MARKERS LEGEND**

- ◆ TWO-WAY AMBER MARKER
- ▶ ONE-WAY AMBER MARKER
- ▷ ONE-WAY CRYSTAL MARKER

**RURAL LEFT TURN**



\*\*\* REDUCE SPACING IF NECESSARY TO ASSURE MARKERS AT CORNER POINTS.

\*\* TURN ARROWS SHALL BE PLACED AS SHOWN ON SHEET #2.

Note: All dimensions are in INCHES (millimeters) unless otherwise shown.

**DISTRICT 5 DETAIL NO. 7800AAA**

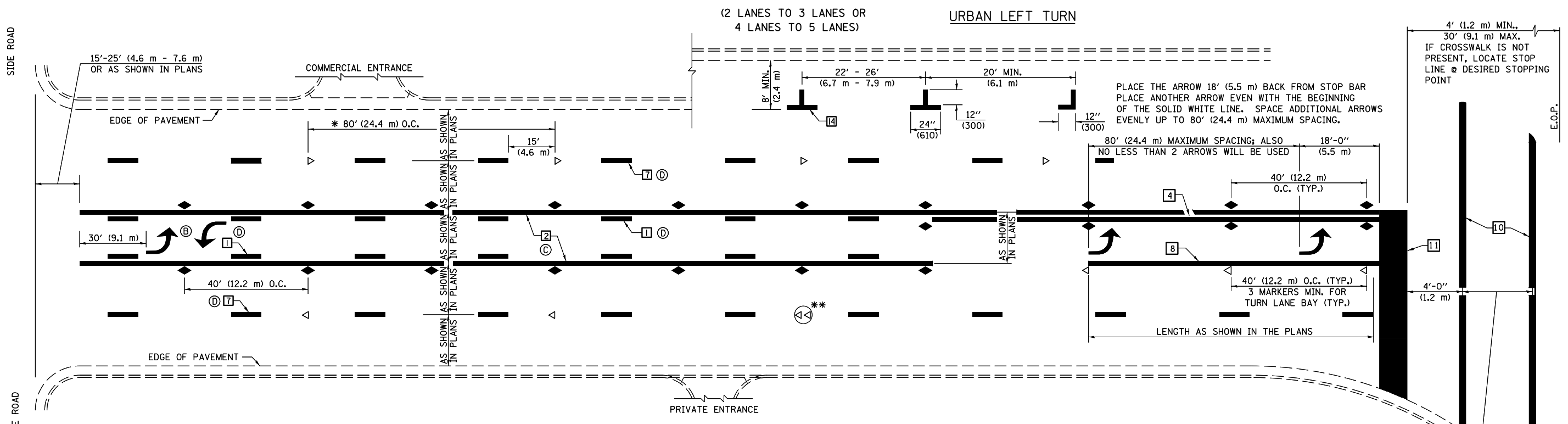
FILE NAME =	USER NAME = ppersonbr	DESIGNED -	REVISED -
ei:\pwork\pwork\personbr\d0333862\050981-Sht-Details.dgn		DRAWN -	REVISED -
	PLOT SCALE = 40.0000' / in.	CHECKED -	REVISED -
#MODELNAME#	PLOT DATE = 2/1/2013	DATE -	REVISED -

**STATE OF ILLINOIS  
DEPARTMENT OF TRANSPORTATION**

**PAVEMENT MARKING AND MARKERS  
(RURAL & URBAN APPLICATIONS)**

SCALE: SHEET OF SHEETS STA. TO STA.

F.A. RTE.	SECTION	COUNTY	TOTAL SHEETS	SHEET NO.
		MCLEAN	26	22
• D5 CRACK & JOINT SEAL 2013-1			CONTRACT NO. 70981	
ILLINOIS FED. AID PROJECT				

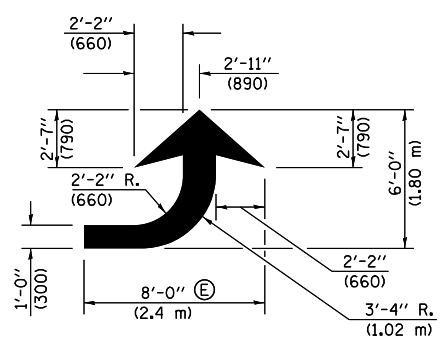


\* REDUCE TO 40 FEET (12.2 METERS) ON CENTER ON CURVES WHERE ADVISORY SPEEDS ARE 10 MPH (15 km/h) LOWER THAN POSTED SPEEDS.

\*\* DOUBLE LANE LINE MARKERS SHALL BE SPECIFIED AND SPACED AS SHOWN IN HIGHWAY STANDARD 781001 FOR MULTI-LANE DIVIDED AND UNDIVIDED HIGHWAYS.

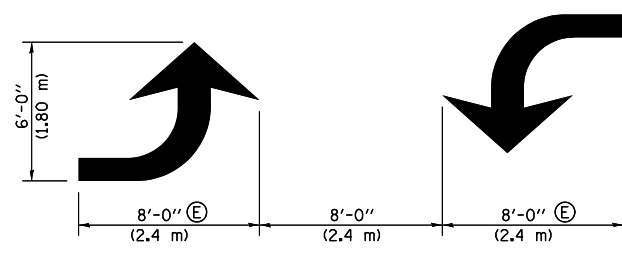
**GENERAL NOTES:**

- ⓑ TURN ARROW PAIRS SHALL BE PLACED AT 250' (75 m) INTERVALS AND SHALL BE EVENLY SPACED BETWEEN BOTH ENDS OF THE BIDIRECTIONAL LEFT TURN LANE.
- ⓒ THE SOLID YELLOW PAVEMENT MARKINGS [2] SHOULD GENERALLY START OR END NEAR THE RADIUS POINT OF EACH STREET RETURN EXCEPT WHERE ONE OR BOTH ENDS WOULD INCLUDE STOP BARS.
- ⓓ THE SKIP-DASH PAVEMENT MARKINGS [1] OR [7] SHOULD BE CENTERED BETWEEN BOTH ENDS OF EACH CITY BLOCK AND SHALL BE PLACED SO THEY LINE UP ACROSS FROM EACH OTHER. SEE EXAMPLE ON SHEET 2 OF 3.
- ⓔ USE LARGE ARROW SIZE FOR BOTH RURAL AND URBAN LOCATIONS. (SEE LAST PAGE OF SECTION 780x FOR SYMBOLS TABLE)



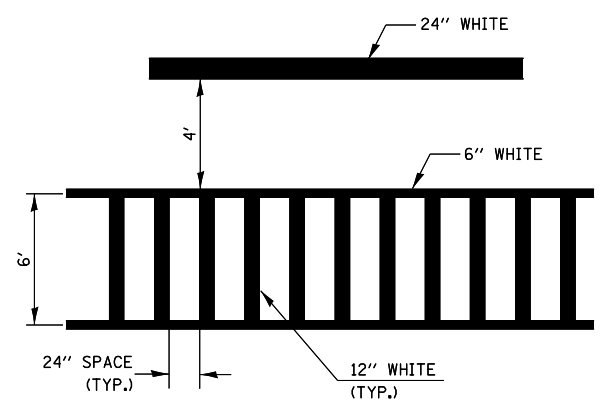
**LEFT ARROW**

REVERSE FOR RIGHT ARROW  
AREA = 15.6 SQ. FT. (1.47 m<sup>2</sup>)  
(WHITE)

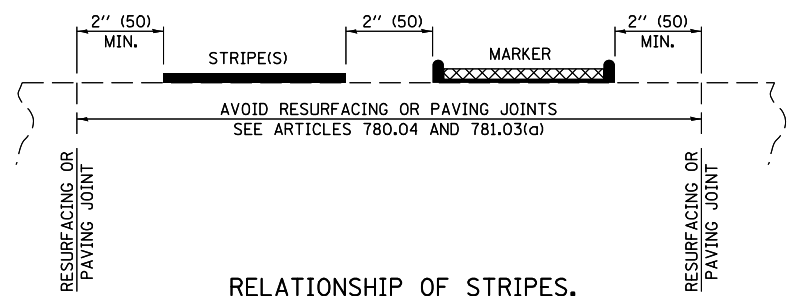


**TYPICAL DOUBLE TURN ARROWS (WHITE)**

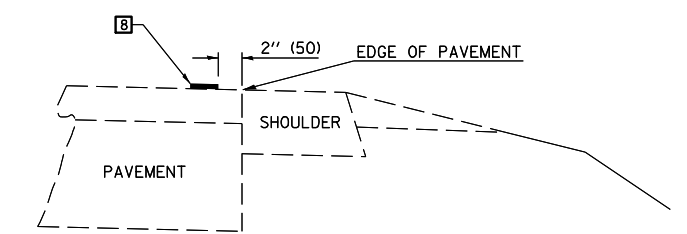
**BLOOMINGTON-NORMAL CITY LIMITS ONLY**



**TYPICAL SPACING FOR CROSSWALKS & STOP BARS**



**RELATIONSHIP OF STRIPES, MARKERS AND JOINTS**



**RELATIONSHIP OF EDGE LINE TO EDGE OF PAVEMENT (SAFETY SHOULDER OR PAVED SURFACE) SEE ARTICLE 780.04**

CROSSWALK WIDTH 6'-0" (1.8 m) OR AS SHOWN IN THE PLANS

Note: All dimensions are in INCHES (millimeters) unless otherwise shown.

**DISTRICT 5 DETAIL NO. 7800AAA**

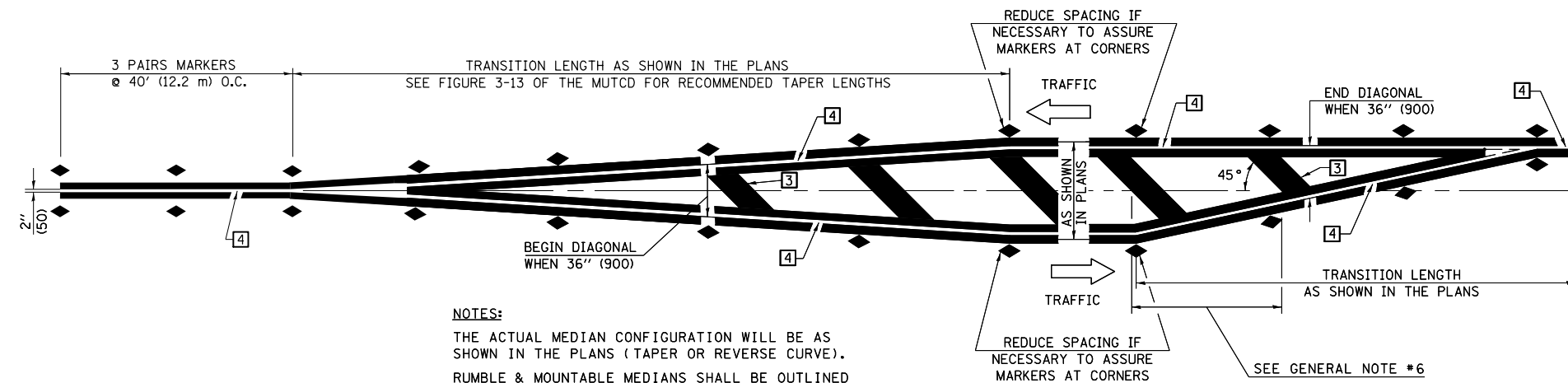
FILE NAME =	USER NAME = ppersonbr	DESIGNED -	REVISED -
ct:\pw\work\p\pidot\personbr\d0333862\05	0981-Shit-Detail.dgn	DRAWN -	REVISED -
	PLOT SCALE = 40.0000' / in.	CHECKED -	REVISED -
\$MODELNAME\$	PLOT DATE = 2/1/2013	DATE -	REVISED -

**STATE OF ILLINOIS  
DEPARTMENT OF TRANSPORTATION**

**PAVEMENT MARKING AND MARKERS  
(RURAL & URBAN APPLICATIONS)**

SCALE: SHEET OF SHEETS STA. TO STA.

F.A. RTE.	SECTION	COUNTY	TOTAL SHEETS	SHEET NO.
VAR.		MCLEAN	26	23
• D5 CRACK & JOINT SEAL 2013-1			CONTRACT NO. 70981	
ILLINOIS FED. AID PROJECT				

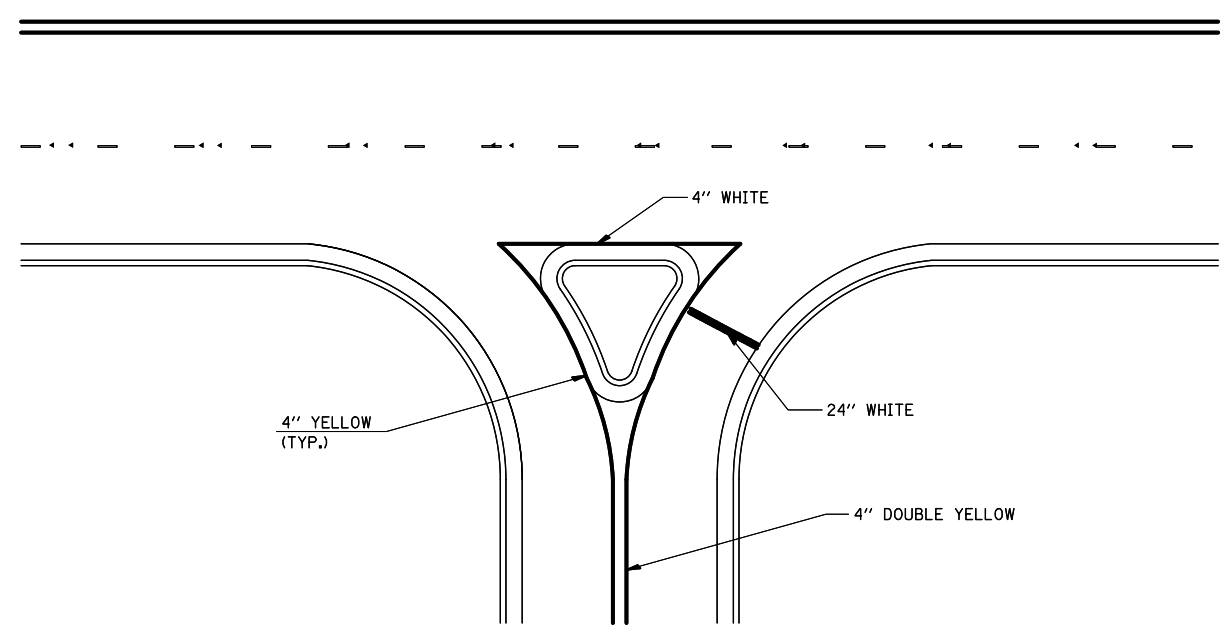


**NOTES:**  
 THE ACTUAL MEDIAN CONFIGURATION WILL BE AS SHOWN IN THE PLANS (TAPER OR REVERSE CURVE).  
 RUMBLE & MOUNTABLE MEDIANS SHALL BE OUTLINED WITH [2].

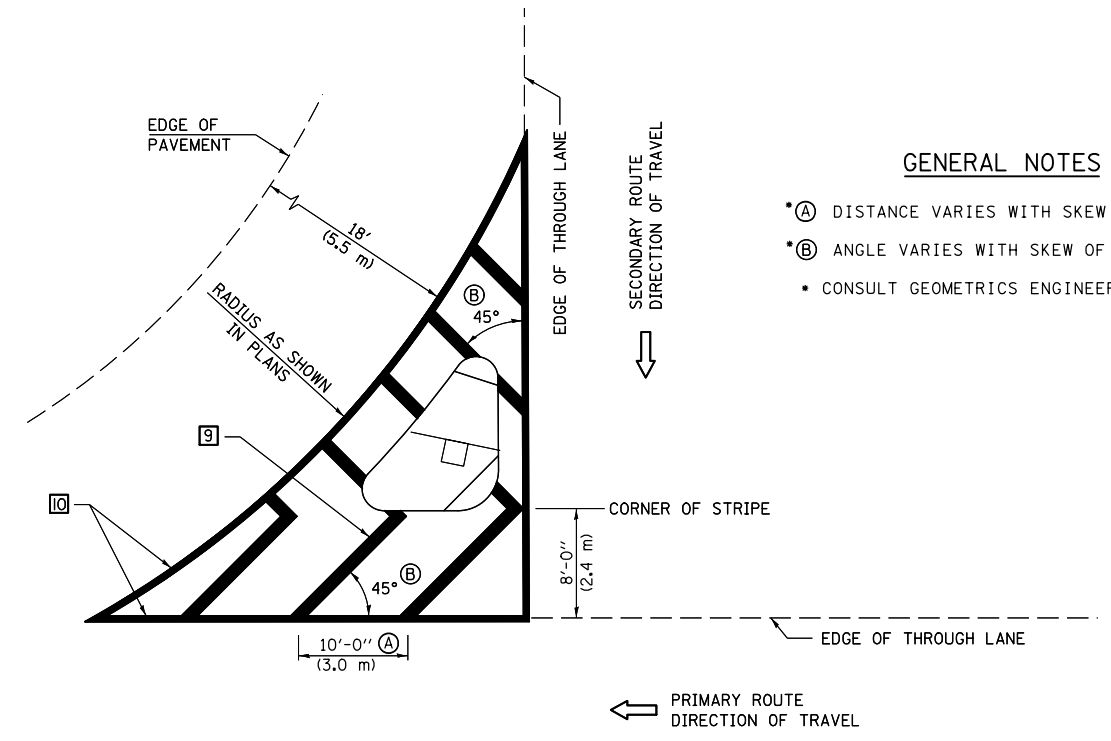
**TYPICAL MEDIAN TRANSITIONS**

**GENERAL NOTES**

1. WHEN MEDIANS ARE PRESENT, PAVEMENT MARKINGS ARE TO BE PLACED ADJACENT TO MEDIANS.
2. SOME OF THE INFORMATION INCLUDED WITH THIS DETAIL MAY NOT BE APPLICABLE TO THIS IMPROVEMENT.
3. PAVEMENT MARKINGS ARE TO BE EXTENDED THROUGH OMISSIONS WHEN APPLICABLE.
4. A STRIPING KEY IS AVAILABLE ELSEWHERE AND SHALL BE SHOWN WHERE THE QUANTITIES ARE LISTED.
5. FINAL PAVEMENT MARKINGS SHALL BE IN PLACE PRIOR TO PLACING ANY RAISED REFLECTIVE PAVEMENT MARKERS.
6. THE FOLLOWING CRITERIA SHALL BE USED FOR SELECTING THE DIAGONAL PAVEMENT MARKING SPACING,  
 < 30 MPH USE 15' (< 50 km/h USE 4.5 m)  
 30-45 MPH USE 20' (50-75 km/h USE 6.0 m)  
 > 45 MPH USE 30' (> 75 km/h USE 9.0 m)



**RIGHT IN - RIGHT OUT ACCESS**



**GENERAL NOTES**

- (A) DISTANCE VARIES WITH SKEW OF INTERSECTION.
- (B) ANGLE VARIES WITH SKEW OF INTERSECTION.
- CONSULT GEOMETRICS ENGINEER

**ISLAND**

Note: All dimensions are in INCHES (millimeters) unless otherwise shown.

FILE NAME =	USER NAME = ppersonbr	DESIGNED -	REVISED -
ei:\pwork\pwork\personbr\d0333862\05	0981-Shit-Details.dgn	DRAWN -	REVISED -
	PLOT SCALE = 40.0000' / in.	CHECKED -	REVISED -
\$MODELNAME\$	PLOT DATE = 2/1/2013	DATE -	REVISED -

**STATE OF ILLINOIS  
 DEPARTMENT OF TRANSPORTATION**

**PAVEMENT MARKING AND MARKERS  
 (RURAL & URBAN APPLICATIONS)**

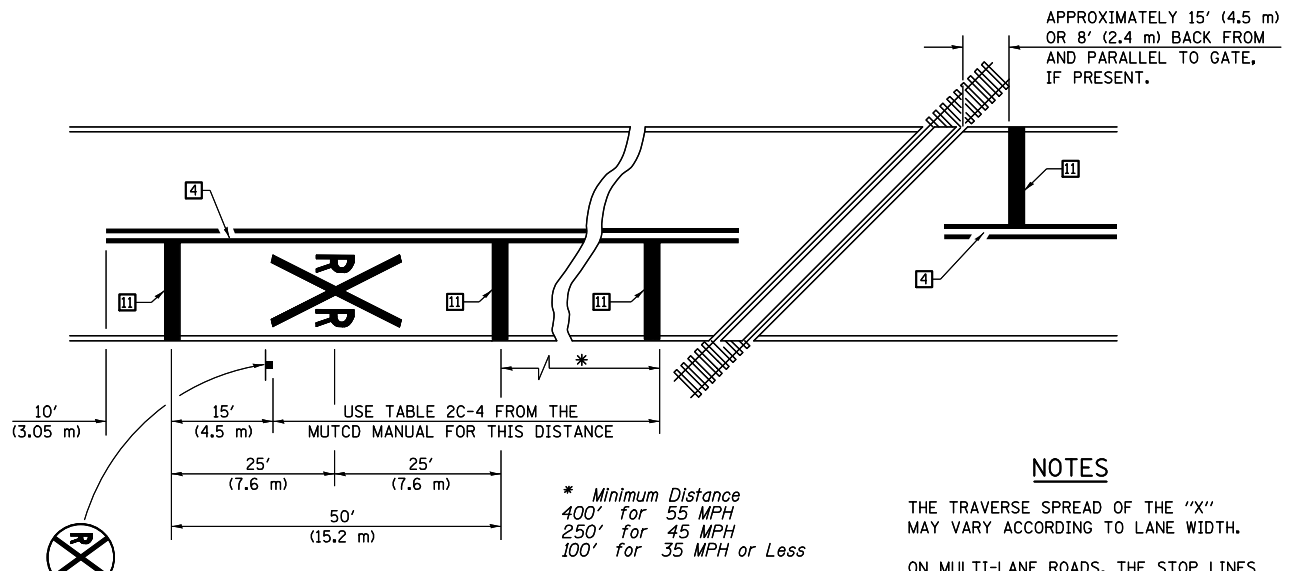
SCALE: SHEET OF SHEETS STA. TO STA.

**DISTRICT 5 DETAIL NO. 7800AAA**

F.A. RTE.	SECTION	COUNTY	TOTAL SHEETS	SHEET NO.
VAR.	•	MCLEAN	26	24
• D5 CRACK & JOINT SEAL 2013-1			CONTRACT NO. 70981	
ILLINOIS FED. AID PROJECT				

RAILROAD CROSSING WITH INTERCONNECT ONLY

RAILROAD CROSSING WITH INTERCONNECT AND PRE-SIGNALS



PAVEMENT MARKINGS AT RAILROAD-HIGHWAY GRADE CROSSING

NOTES

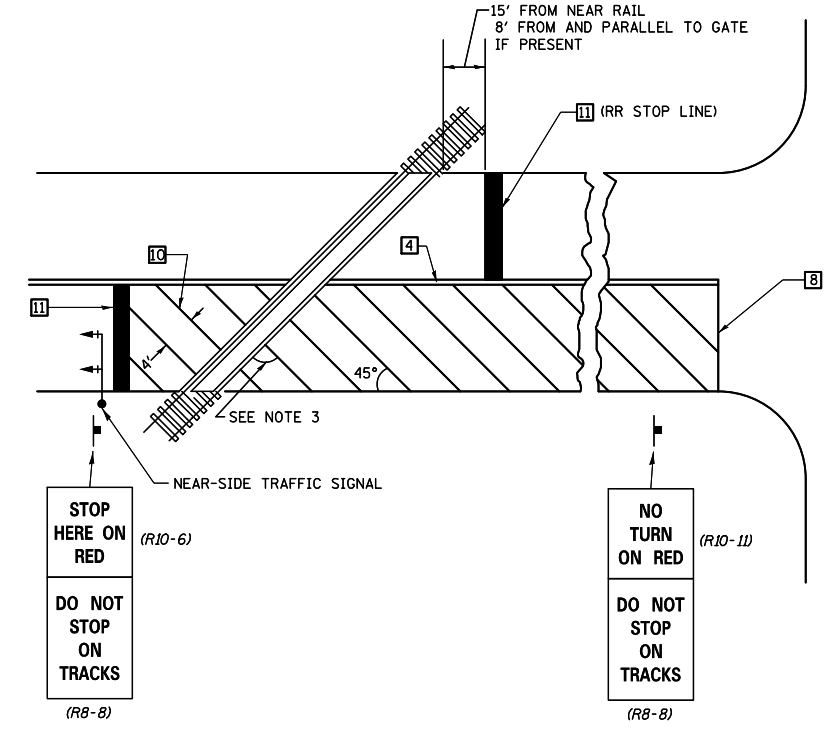
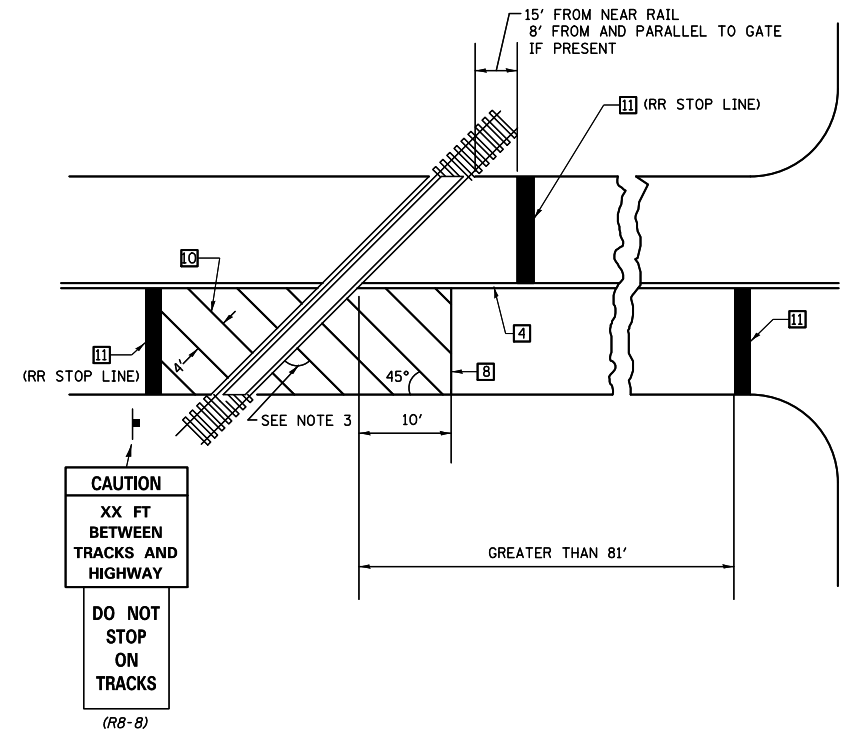
APPROXIMATELY 15' (4.5 m) OR 8' (2.4 m) BACK FROM AND PARALLEL TO GATE, IF PRESENT.

THE TRAVERSE SPREAD OF THE "X" MAY VARY ACCORDING TO LANE WIDTH.

ON MULTI-LANE ROADS, THE STOP LINES SHALL EXTEND ACROSS ALL APPROACH LANES AND SEPARATE RXR SYMBOLS SHALL BE PLACED ADJACENT TO EACH OTHER IN EACH LANE.

WHEN THE PAVEMENT MARKING SYMBOL IS USED, A PORTION OF THE SYMBOL SHOULD BE LOCATED DIRECTLY ADJACENT TO THE ADVANCE WARNING SIGN (W10-1) AS PLACED BY TABLE II-1, CONDITION B OF THE MUTCD.

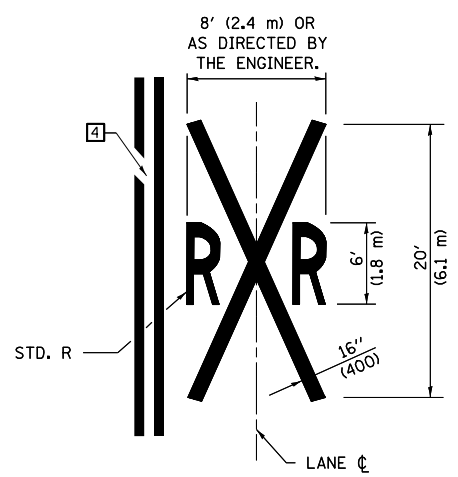
\* Minimum Distance  
400' for 55 MPH  
250' for 45 MPH  
100' for 35 MPH or Less



SUPPLEMENTAL PAVEMENT MARKING TREATMENT FOR RAILROAD-HIGHWAY GRADE CROSSING

GENERAL NOTES

- SUPPLEMENTAL PAVEMENT MARKINGS TO BE INSTALLED ONLY ON APPROACHES TO INTERSECTIONS CONTROLLED BY TRAFFIC SIGNALS WHICH ARE INTERCONNECTED WITH THE RAILROAD WARNING SIGNALS.
- EXTEND PAVEMENT MARKINGS TO THE INTERSECTION ONLY WHERE NEAR-SIDE TRAFFIC SIGNALS ARE USED.
- WHERE THE ANGLE BETWEEN THE DIAGONAL PAVEMENT MARKINGS AND THE TRACK WOULD BE LESS THAN 20°, THE PAVEMENT MARKINGS SHOULD BE PLACED IN THE OPPOSITE DIRECTION FROM THAT SHOWN.



Note: All dimensions are in INCHES (millimeters) unless otherwise shown.

FILE NAME =	USER NAME = ppersonbr	DESIGNED -	REVISED -
et:\pw\work\p\idot\ppersonbr\d0333862\05	0981-Sht-Details.dgn	DRAWN -	REVISED -
	PLOT SCALE = 40.0000' / in.	CHECKED -	REVISED -
\$MODELNAME\$	PLOT DATE = 2/1/2013	DATE -	REVISED -

STATE OF ILLINOIS  
DEPARTMENT OF TRANSPORTATION

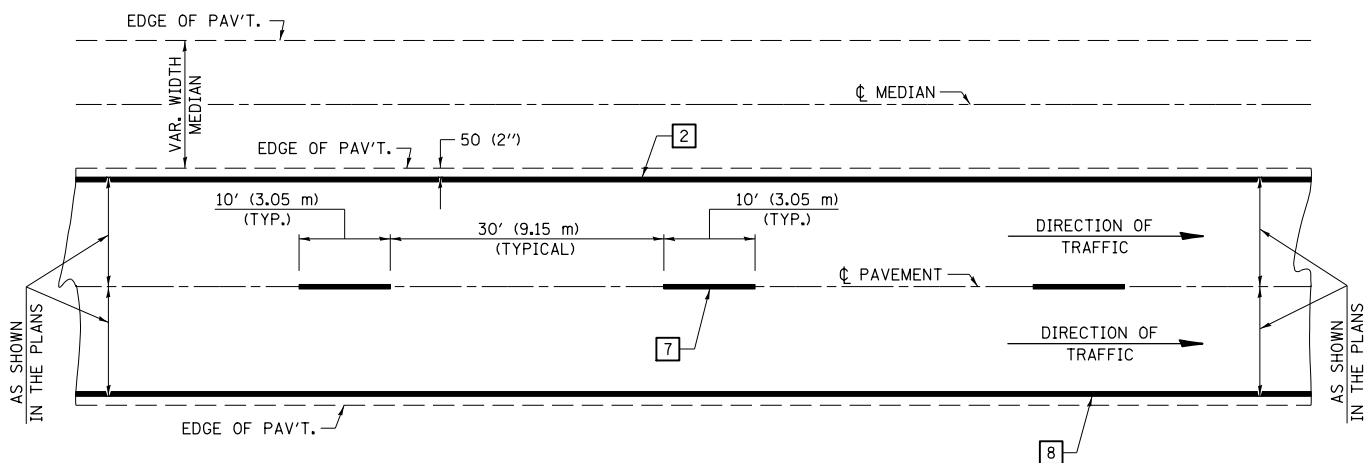
PAVEMENT MARKING AND MARKERS  
(RURAL & URBAN APPLICATIONS)

SCALE: SHEET OF SHEETS STA. TO STA.

DISTRICT 5 DETAIL NO. 7800AAAA

F.A. RTE.	SECTION	COUNTY	TOTAL SHEETS	SHEET NO.
VAR.		MCLEAN	26	25
• D5 CRACK & JOINT SEAL 2013-1			CONTRACT NO. 70981	
ILLINOIS FED. AID PROJECT				

CENTERLINE INTERSTATE OR MULTI-LANE TWO WAY DIVIDED HIGHWAY

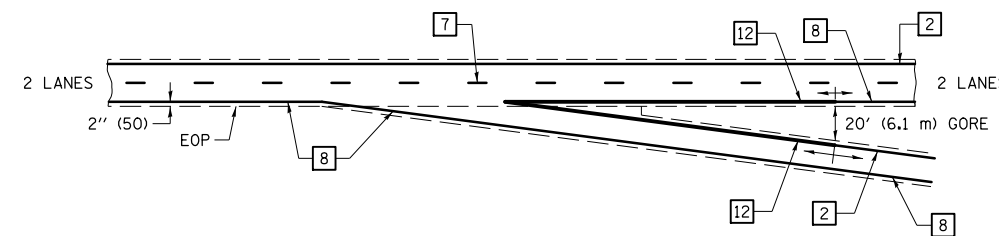


NOTE: PAVEMENT MARKINGS ARE TO BE EXTENDED THROUGH OMISSIONS WHEN APPLICABLE.

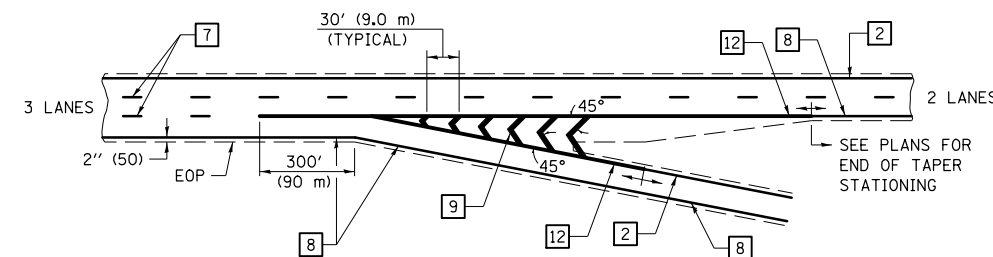
NOTE: SEE ARTICLES 780.04 & 781.03 FOR LOCATION OF STRIPES AND MARKERS RELATIVE TO EDGES OR JOINTS.

FOR RAISED REFLECTIVE PAVEMENT MARKERS, REFER TO STANDARD 781001.

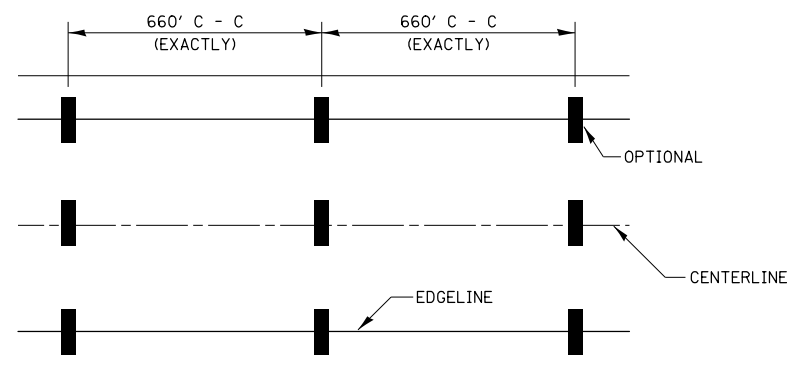
TYPICAL EXIT RAMP TERMINAL



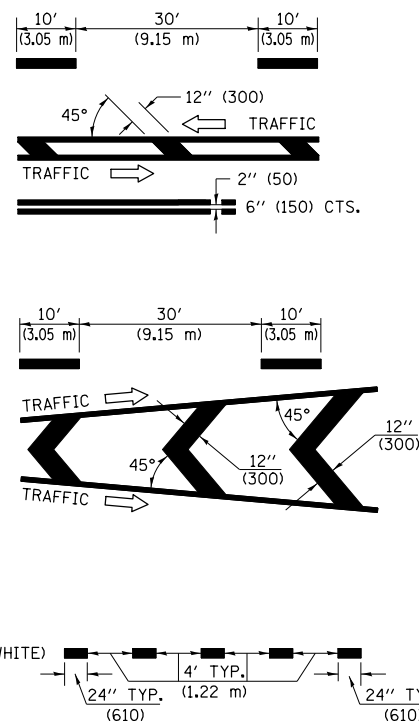
EXIT RAMP TERMINAL with EXCLUSIVE (auxiliary) LANE



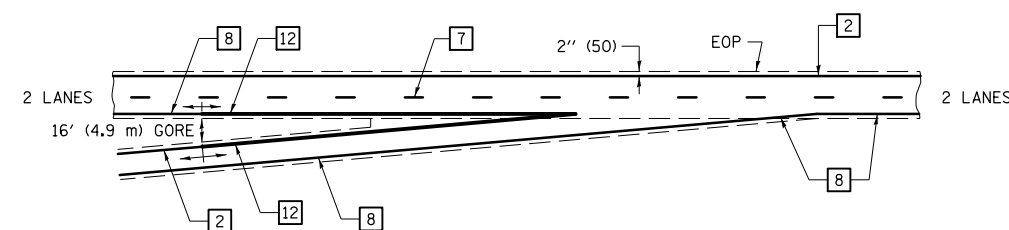
TYPICAL PAVEMENT MARKING LEGEND



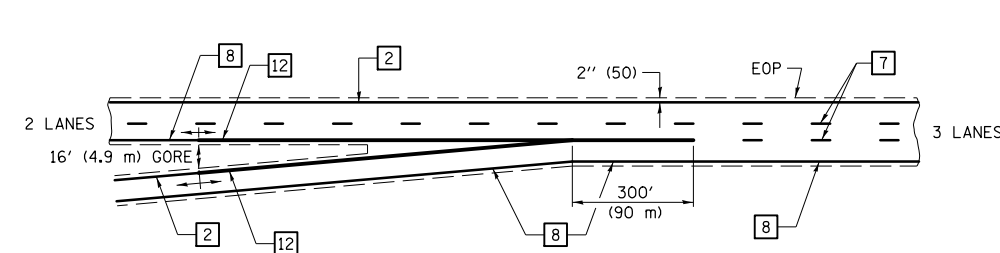
- 1 4" (100) SKIP-DASH (YELLOW)
- 2 4" (100) SOLID (YELLOW)
- 3 12" (300) DIAGONAL (YELLOW)
- 4 4" (100) DOUBLE YELLOW (NARROW)
- 5 RESERVED
- 6 RESERVED
- 7 4" (100) SKIP-DASH (WHITE)
- 8 4" (100) SOLID (WHITE)
- 9 12" (300) DIAGONAL (WHITE)
- 10 6" (150) SOLID (WHITE)
- 11 24" (600) STOP BAR (WHITE)
- 12 8" (200) SOLID (WHITE)
- 13 4" (100) LANE LINE EXTENSIONS (WHITE)



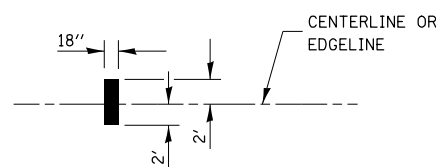
TYPICAL ENTRANCE RAMP TERMINAL



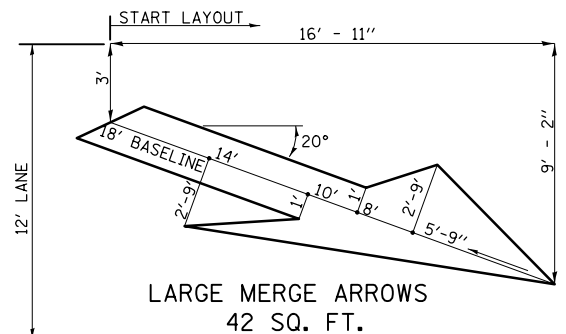
ENTRANCE RAMP TERMINAL with EXCLUSIVE LANE



IT WILL BE NECESSARY TO HAVE A REPRESENTATIVE OF THE STATE POLICE PRESENT SO THAT THE ACCURACY OF MEASUREMENT CAN BE ATTESTED TO IN COURT.



AERIAL SPEED CHECK ZONES



LARGE MERGE ARROWS  
42 SQ. FT.

Note: All dimensions are in INCHES (millimeters) unless otherwise shown.

FILE NAME =	USER NAME = ppersonbr	DESIGNED -	REVISED -
ei:\pwork\work\pwork\personbr\d0333862\050981-Sht-Details.dgn		DRAWN -	REVISED -
	PLOT SCALE = 40.0000' / in.	CHECKED -	REVISED -
	PLOT DATE = 2/1/2013	DATE -	REVISED -

STATE OF ILLINOIS  
DEPARTMENT OF TRANSPORTATION

PAVEMENT MARKING (INTERSTATE & MULTI-LANE APPLICATIONS)

SCALE: SHEET OF SHEETS STA. TO STA.

DISTRICT 5 DETAIL NO. 7800BBBB

F.A. RTE.	SECTION	COUNTY	TOTAL SHEETS	SHEET NO.
		MCLEAN	26	26
• D5 CRACK & JOINT SEAL 2013-1 CONTRACT NO. 70981				
ILLINOIS FED. AID PROJECT				