

STATE OF ILLINOIS  
DEPARTMENT OF TRANSPORTATION  
DIVISION OF HIGHWAYS

**PROPOSED  
HIGHWAY PLANS**

F.A.I. ROUTE 57 (I-57) & F.A.I. ROUTE 74 (I-74)  
SECTION D5 PATCHING 2013-5  
PAVEMENT PATCHING  
CHAMPAIGN & VERMILION COUNTIES

C-95-033-12

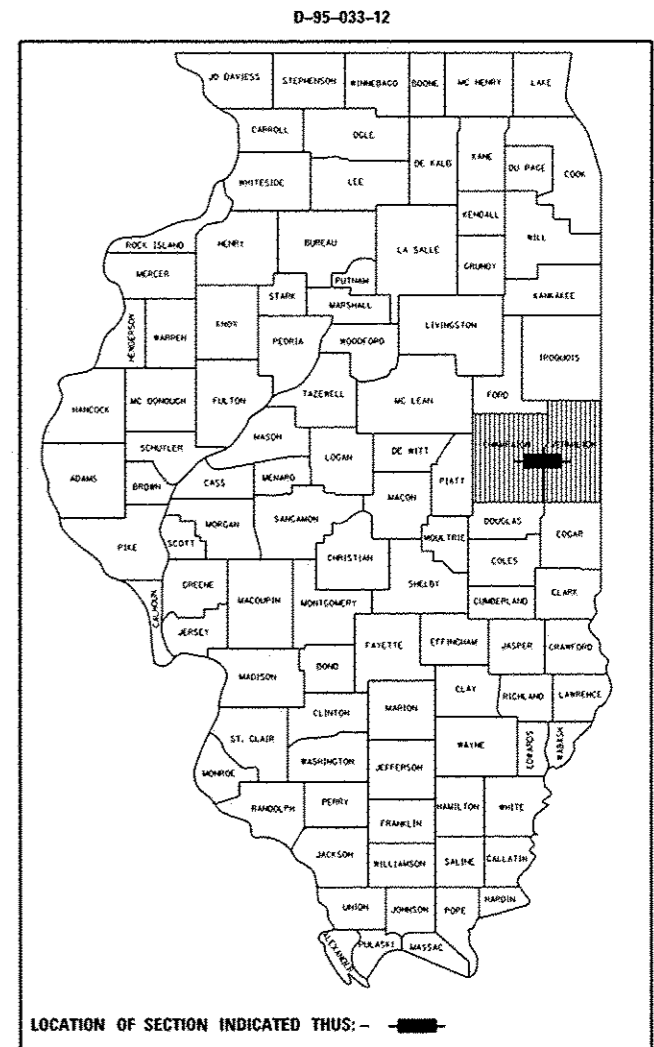
F.A.I. RTE.	SECTION	COUNTY	TOTAL SHEETS	SHEET NO.
57&74	D5 PATCHING 2013-5	ILLINOIS	24	1
CONTRACT NO. 70986				
* CHAMPAIGN & VERMILION				

FOR LOCATION MAPS, SEE SHEETS NO. 2-4  
FOR INDEX OF SHEETS, SEE SHEET NO. 5  
FOR SUMMARY OF QUANTITIES, SEE SHEETS NO. 6-8

CURRENT ADT OTHER PRINCIPAL ARTERIAL FAI 57 (I-57)			
LEG "A"	ADT(2013) = 21,800	SU = 4.3%	MU = 25.9%
LEG "B"	ADT(2013) = 23,700	SU = 3.3%	MU = 24.3%
LEG "C"	ADT(2013) = 33,600	SU = 3.9%	MU = 24.5%
LEG "D"	ADT(2013) = 23,000	SU = 4.4%	MU = 23.8%
LEG "E"	ADT(2013) = 20,400	SU = 3.2%	MU = 24.6%
LEG "F"	ADT(2013) = 21,400	SU = 3.2%	MU = 24.4%

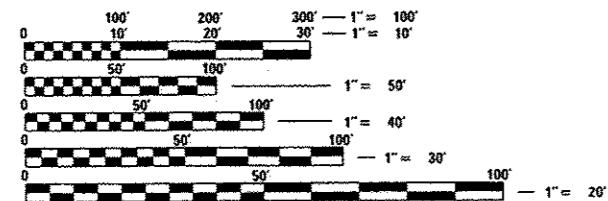
OTHER PRINCIPAL ARTERIAL FAI 74 (I-74)			
LEG "A"	ADT(2013) = 27,800	SU = 3.5%	MU = 23.0%
LEG "B"	ADT(2013) = 27,500	SU = 3.6%	MU = 21.1%
LEG "C"	ADT(2013) = 30,000	SU = 3.5%	MU = 23.2%
LEG "D"	ADT(2013) = 26,400	SU = 4.2%	MU = 24.8%
LEG "E"	ADT(2013) = 24,700	SU = 3.8%	MU = 26.5%
LEG "F"	ADT(2013) = 24,100	SU = 3.1%	MU = 24.2%
LEG "G"	ADT(2013) = 17,800	SU = 3.6%	MU = 35.1%
LEG "H"	ADT(2013) = 23,100	SU = 3.4%	MU = 29.1%



LOCATION NO. 1 (F.A.I. 57) ON PAGE NO. 2

LOCATION NO. 2 (F.A.I. 74) ON PAGE NO. 3

LOCATION NO. 3 (F.A.I. 74) ON PAGE NO. 4



FULL SIZE PLANS HAVE BEEN PREPARED USING STANDARD ENGINEERING SCALES. REDUCED SIZED PLANS WILL NOT CONFORM TO STANDARD SCALES. IN MAKING MEASUREMENTS ON REDUCED PLANS, THE ABOVE SCALES MAY BE USED.

J.U.L.I.E.  
JOINT UTILITY LOCATION INFORMATION FOR EXCAVATION  
1-800-892-0123 TOWNSHIPS: CATLIN, CHAMPAIGN, HENSLEY,  
OR 811 MAHOMET, OGDEN, SOMER, ST. JOSEPH,  
TOLONO, & URBANA

PROJECT ENGINEER: NANCY FASIG  
SQUAD LEADER: STEVE COOMBES  
DESIGNER: DEREK BRIDGES  
(217) 465-4181  
CONTRACT NO. 70986

GROSS LENGTH = 246,351.13 FT. = 46.657 MILES  
NET LENGTH = 246,351.13 FT. = 46.657 MILES

STATE OF ILLINOIS  
DEPARTMENT OF TRANSPORTATION  
DIVISION OF HIGHWAYS

SUBMITTED JAN. 31 2013  
Joseph E. Crowe  
DEPUTY DIRECTOR OF HIGHWAYS, REGION ENGINEER

March 22 2010  
John D. Baranzelli, PE. Jr.  
ENGINEER OF DESIGN AND ENVIRONMENT

March 22 2010  
Omer Osman, PE. Jr.  
DIRECTOR OF HIGHWAYS, CHIEF ENGINEER

PRINTED BY THE AUTHORITY  
OF THE STATE OF ILLINOIS