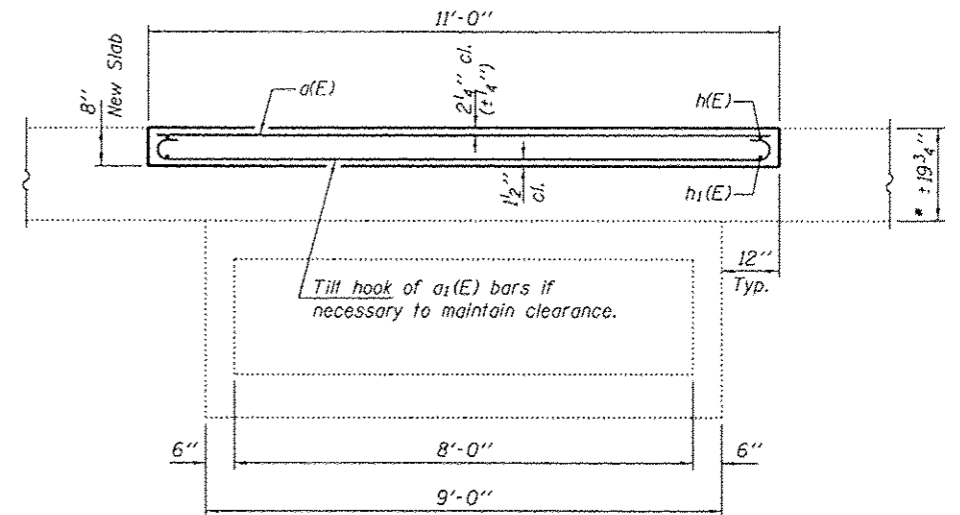


LONGITUDINAL SECTION



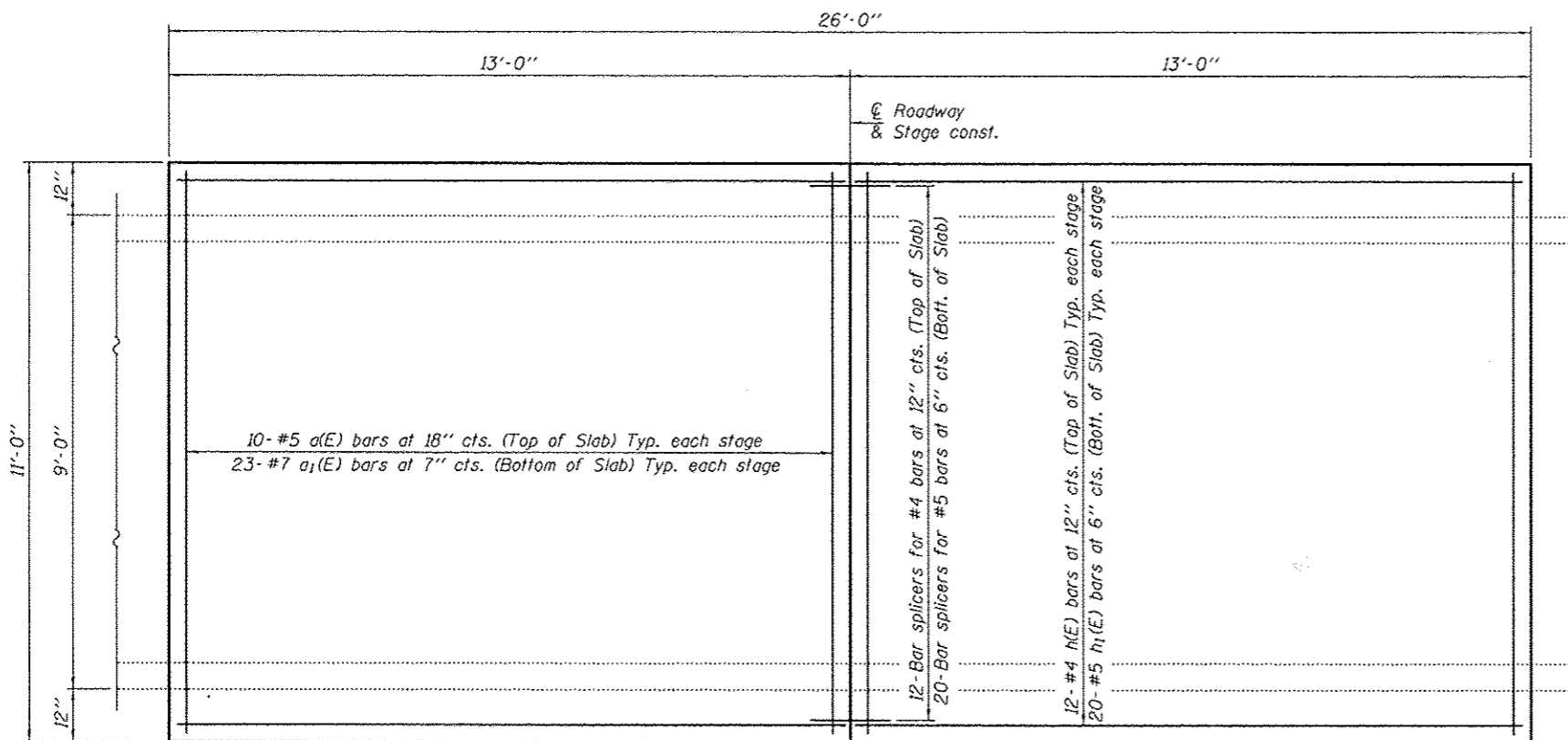
SECTION A-A

* Remove per Partial Depth Removal table and replace with 8" concrete slab as shown. Slope to match roadway. Cost of removal included with Partial Depth Removal (Variable Depth). Removal to be limited to the 8" shown.

PARTIAL DEPTH REMOVAL

(Based on coring report)

Layer	EB	WB
HMA	8"	5.5"
PCC	0"	2.5"
Total	8"	8"



PLAN

GENERAL NOTES

Plan dimensions and details relative to existing plans are subject to nominal construction variations. The Contractor shall field verify existing dimensions and details affecting new construction and make necessary approved adjustments prior to construction or ordering of materials. Such variations shall not be cause for additional compensation for a change in scope of the work, however, the Contractor will be paid for the quantity actually furnished at the unit price bid for the work.

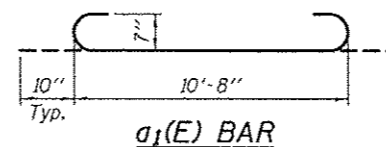
Reinforcement bars designated (E) shall be epoxy coated. The slab surface shall have its final finish tined according to Article 420.09(e)(1) of the Standard Specifications. Cost included with Concrete Superstructure.

BILL OF MATERIAL

Bar	No.	Size	Length	Shape
a(E)	20	#5	10'-8"	—
a1(E)	46	#7	12'-4"	⌋
h(E)	24	#4	12'-8"	—
h1(E)	40	#5	12'-8"	—
Bar Splicers			Each	32
Partial Depth Removal (Variable Depth)			Sq. Yds.	31.8
Reinforcement Bars, Epoxy Coated			Pound	2110
Concrete Superstructure			Cu. Yds.	7.1

DESIGN STRESSES

FIELD UNITS
 $f'c = 3,500$ psi
 $f_y = 60,000$ psi (Reinf.)



EXPIRES 11-30-2014

DESIGNED DAB	EXAMINED Timothy A. [Signature]	DATE - MARCH 14, 2013
CHECKED VHV	PASSED [Signature]	
DRAWN ballva		
CHECKED DAB		

STATE OF ILLINOIS
DEPARTMENT OF TRANSPORTATION

SLAB DETAILS
SN 021-8028

SHEET NO. 1 OF 2 SHEETS

F.A.P. RTE.	SECTION	COUNTY	TOTAL SHEETS	SHEET NO.
749	POSTING MITIGATION FY2013-1	DOUGLAS	17	7
CONTRACT NO. 70A11				
[ILLINOIS] FED. AID PROJECT				