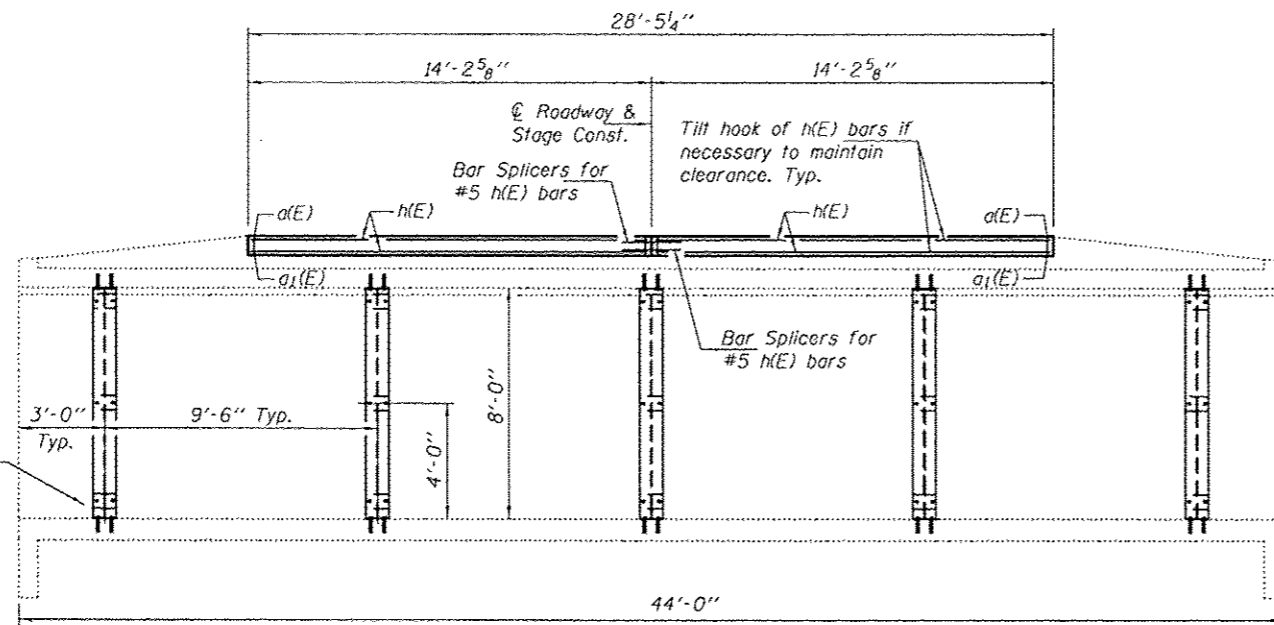
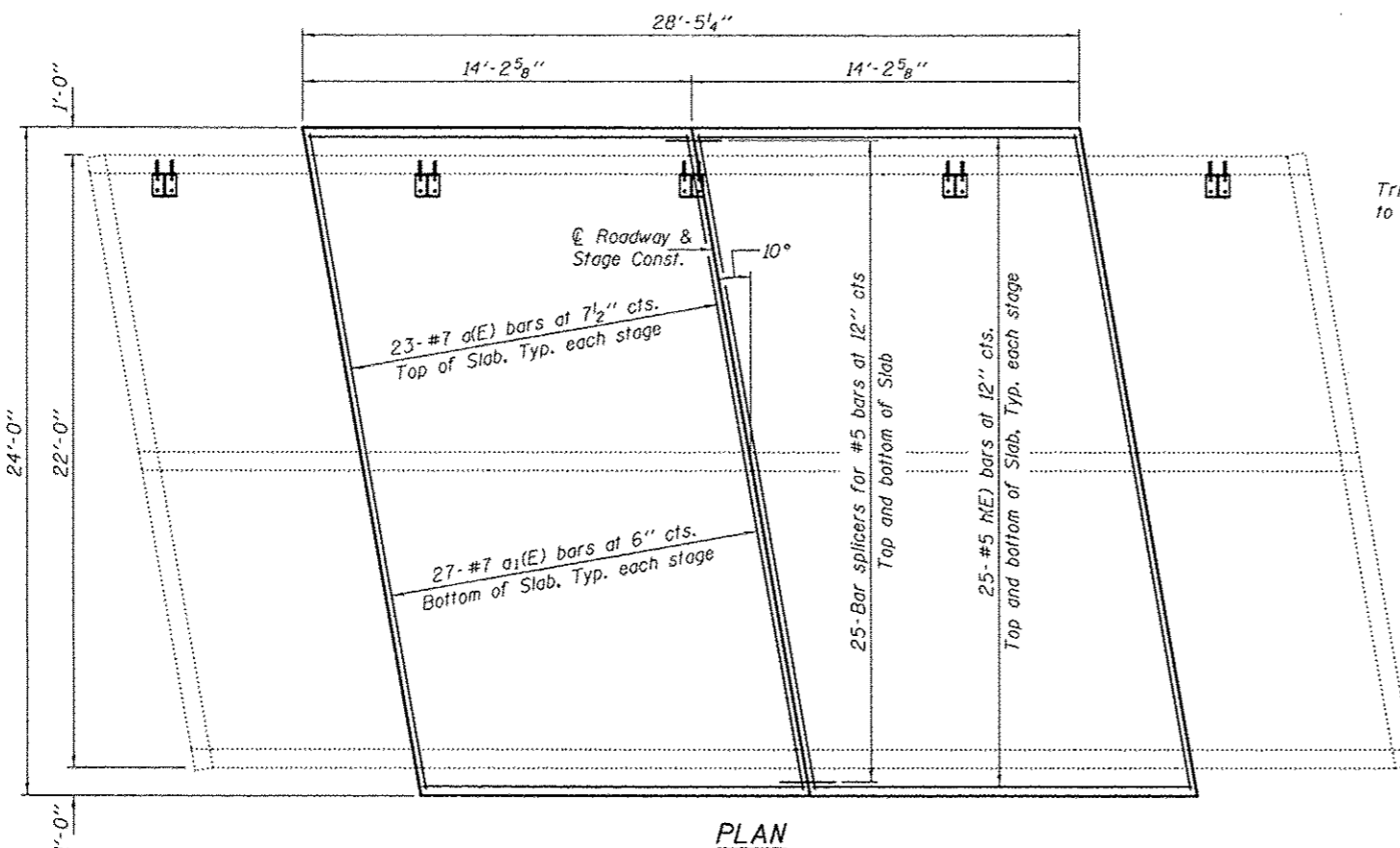


Sediment removal is required to install steel column. Cost included with Furnishing & Erecting Structural Steel. Typ.



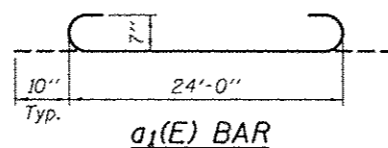
LONGITUDINAL SECTION



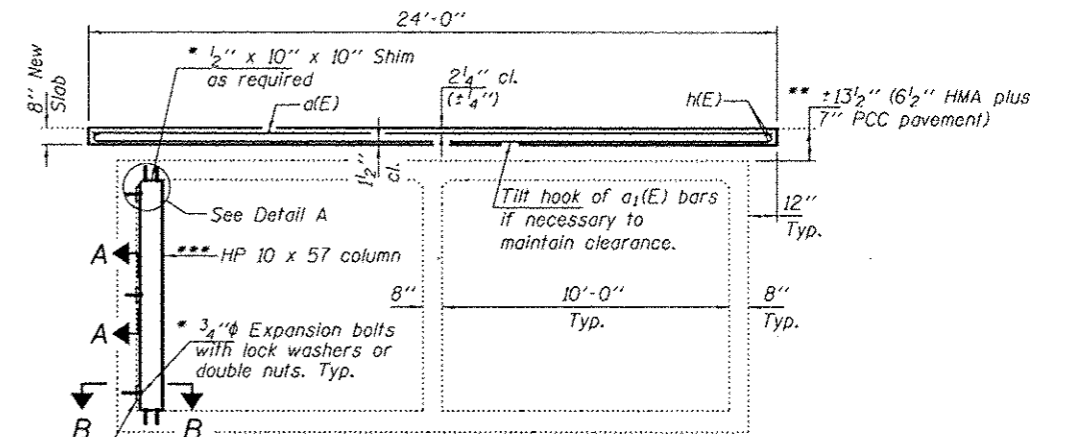
PLAN

DESIGN STRESSES

FIELD UNITS  
 $f'_c = 3,500$  psi  
 $f_y = 60,000$  psi (Reinf.)



a1(E) BAR



CROSS SECTION

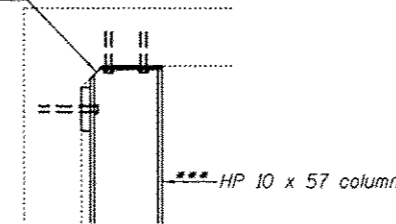
(Looking East)

Cost included with Furnishing & Erecting Structural Steel.

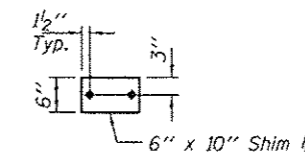
Remove 6 1/2" of existing HMA overlay and 1 1/2" of PCC pavement and replace with 8" concrete slab as shown. Slope to match roadway. Cost of removal included with Partial Depth Removal (Variable Depth). Maximum removal depth to be limited to 8".

North wall only.

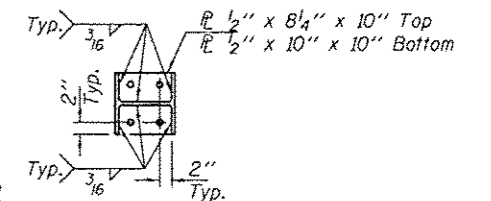
Trim HP as required to clear fillet



DETAIL A



SECTION A-A



SECTION B-B

GENERAL NOTES

Plan dimensions and details relative to existing plans are subject to nominal construction variations. The Contractor shall field verify existing dimensions and details affecting new construction and make necessary approved adjustments prior to construction or ordering of materials. Such variations shall not be cause for additional compensation for a change in scope of the work, however, the Contractor will be paid for the quantity actually furnished at the unit price bid for the work.

Reinforcement bars designated (E) shall be epoxy coated. The slab surface shall have its final finish lined according to Article 420.09(e)(1) of the Standard Specifications. Cost included with Concrete Superstructures.

All structural steel shall conform to AASHTO Classification M-270 Gr. 36, unless otherwise noted.

All structural steel shall be shop painted with the inorganic zinc rich primer per AASHTO M300, Type I. Cost included with Furnishing and Erecting Structural Steel.

TOTAL BILL OF MATERIAL

Bar	No.	Size	Length	Shape
a1(E)	46	#7	24'-0"	—
a1(E)	54	#7	25'-8"	—
h(E)	100	#5	13'-10"	—
Bar Splicers			Each	50
Partial Depth Removal (Variable Depth)			Sq. Yd.	75.9
Reinforcement Bars, Epoxy Coated			Pound	6530
Concrete Superstructure			Cu. Yd.	16.9
Furnishing & Erecting Structural Steel			Pound	2650



EXPIRES 11-30-2014

DESIGNED DAB  
 CHECKED VHV  
 DRAWN bolva  
 CHECKED DAB

EXAMINED Trinity A. O'Connell  
 PASSED David Carl Puzey  
 REGISTERED ENGINEER OF STRUCTURAL SERVICES  
 REGISTERED ENGINEER OF BRIDGES AND STRUCTURES

DATE MARCH 14, 2013  
 REVISED  
 REVISED

STATE OF ILLINOIS  
 DEPARTMENT OF TRANSPORTATION

GENERAL PLAN & ELEVATION  
 ILLINOIS ROUTE 1 OVER N. FORK VERMILION RIVER  
 SN 092-0130

SHEET 1 OF 2 SHEETS

F.A.P. RTE. 332 SECTION POSTING MITIGATION FY2013-1 COUNTY VERMILION TOTAL SHEETS 17 SHEET NO. 9 CONTRACT NO. 70A11 ILLINOIS FED. AID PROJECT