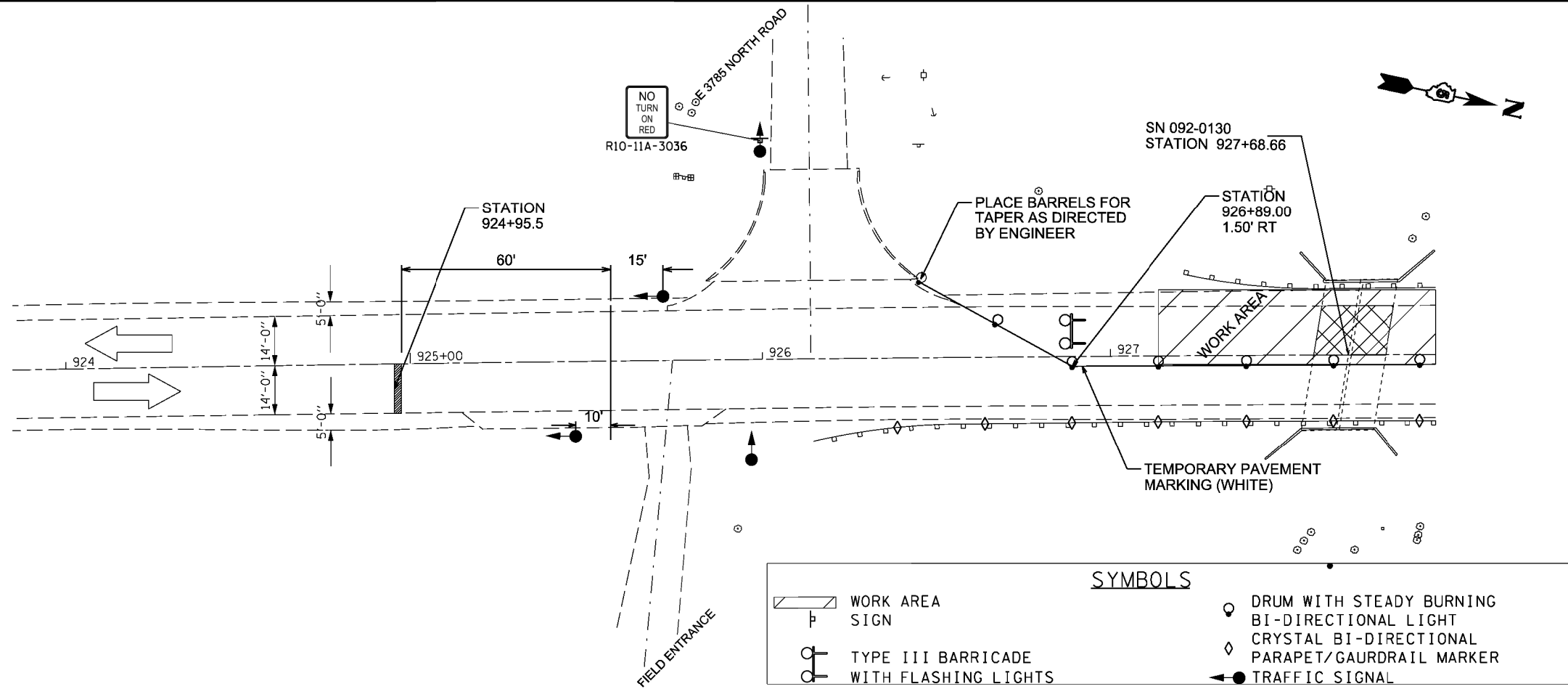


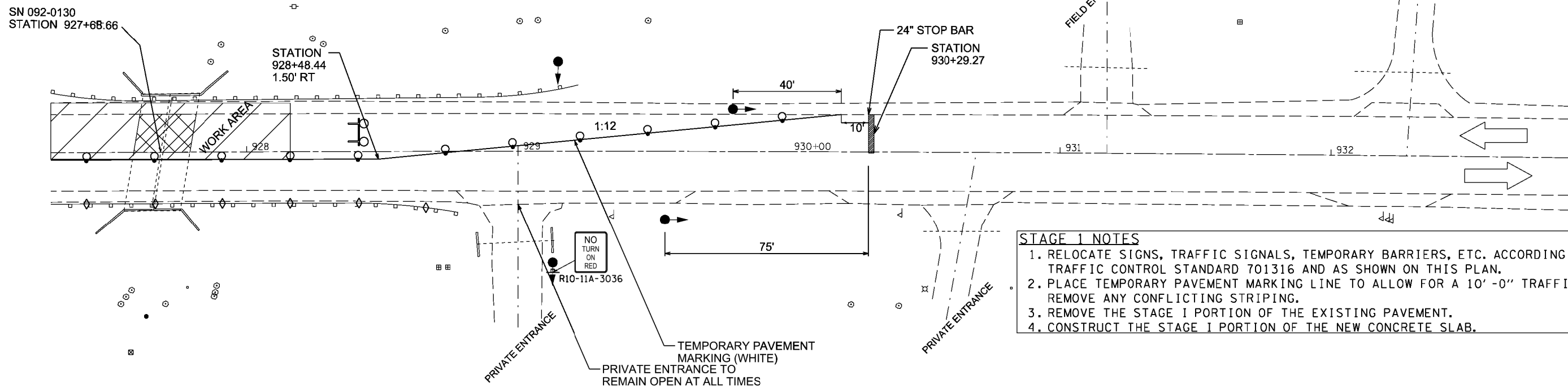
# STAGE ONE

## GENERAL NOTES FOR STAGE CONSTRUCTION:

1. ALL SIGNS, TRAFFIC CONTROL EQUIPMENT, AND TEMPORARY PAVEMENT MARKINGS SHALL BE IN ACCORDANCE WITH THE LATEST VERSION OF HIGHWAY STANDARD 701316 AND SHALL BE INCLUDED IN THE CONTRACT UNIT PRICE EACH FOR TRAFFIC CONTROL AND PROTECTION STANDARD 701316
2. ALL TEMPORARY BRIDGE TRAFFIC SIGNALS FOR CONSTRUCTION WILL BE MEASURED AS 1 (ONE) UNIT.
3. PLACE RCA IN ADVANCE OF SIGNALS AS DIRECTED BY ENGINEER.
4. ENTRANCE TO E 3785 NORTH ROAD IS TO REMAIN OPEN AT ALL TIMES.
5. EXISTING STOP SIGN AT ENTRANCE TO E 3785 NORTH ROAD IS TO BE COVERED
6. AN RCA WITH SIGNALS AND A SIGNAL AHEAD SIGN ARE TO BE PLACED ON E 3785 AS DIRECTED BY THE ENGINEER.
7. ALL PRIVATE ENTRANCES ARE TO REMAIN OPEN AT ALL TIMES.
8. ALL TRAFFIC CONTROL ITEMS NOT SHOWN ON STAGE I & II PLAN VIEW SHALL BE PER REQUIREMENTS OF TRAFFIC CONTROL AND PROTECTION STANDARD 701316.



SYMBOLS	
	WORK AREA
	SIGN
	TYPE III BARRICADE WITH FLASHING LIGHTS
	DRUM WITH STEADY BURNING BI-DIRECTIONAL LIGHT
	CRYSTAL BI-DIRECTIONAL PARAPET/GAURDRAIL MARKER
	TRAFFIC SIGNAL



- ### STAGE 1 NOTES
1. RELOCATE SIGNS, TRAFFIC SIGNALS, TEMPORARY BARRIERS, ETC. ACCORDING TO TRAFFIC CONTROL STANDARD 701316 AND AS SHOWN ON THIS PLAN.
  2. PLACE TEMPORARY PAVEMENT MARKING LINE TO ALLOW FOR A 10' -0" TRAFFIC LANE. REMOVE ANY CONFLICTING STRIPING.
  3. REMOVE THE STAGE I PORTION OF THE EXISTING PAVEMENT.
  4. CONSTRUCT THE STAGE I PORTION OF THE NEW CONCRETE SLAB.

FILE NAME =	USER NAME = jaymedf	DESIGNED -	REVISED -	<b>STATE OF ILLINOIS DEPARTMENT OF TRANSPORTATION</b>	<b>STAGE I TRAFFIC CONTROL SN 092-0130 (LOCATION #2)</b>			F.A.P. RTE.	SECTION	COUNTY	TOTAL SHEETS	SHEET NO.
e:\p\work\p\idot\jaymedf\d0318412\05700111-sht-staging.dgn	11-sht-staging.dgn	DRAWN - DFJ	REVISED -		322	..	VERMILION	17	12			
	PLOT SCALE = 40x8.0000 1" / 16'	CHECKED -	REVISED -		** POSTING MITIGATION FY2013-1			CONTRACT NO. 70A11				
*MODELNAME*	PLOT DATE = 1/28/2013	DATE - 1/18/13	REVISED -		SCALE:	SHEET 01	OF 02 SHEETS	STA.	TO STA.	ILLINOIS FED. AID PROJECT		