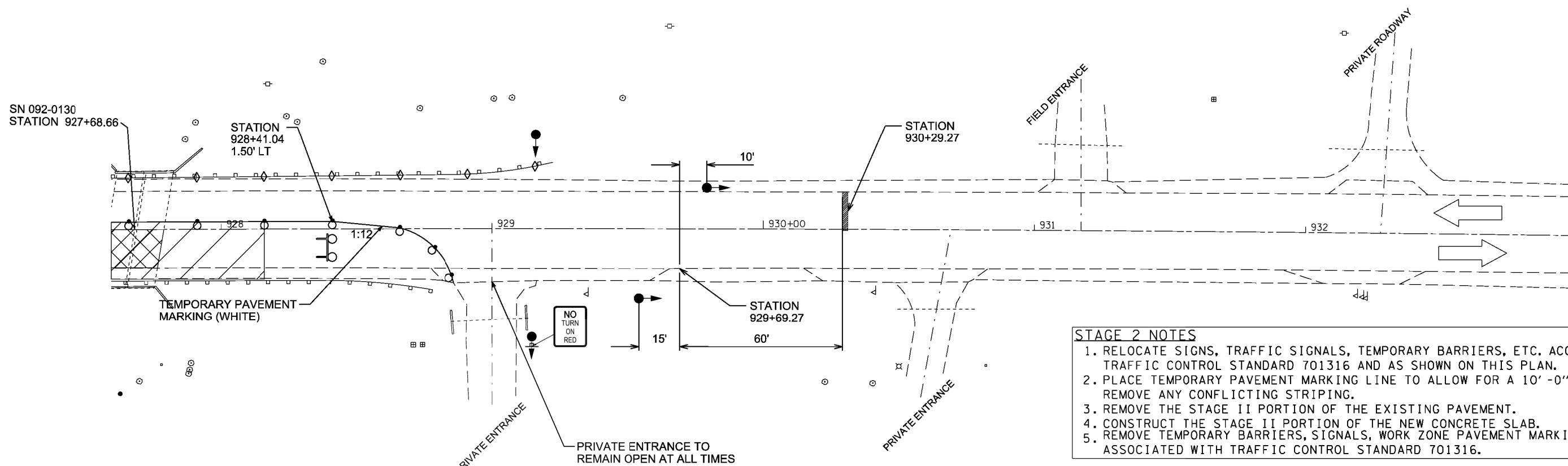
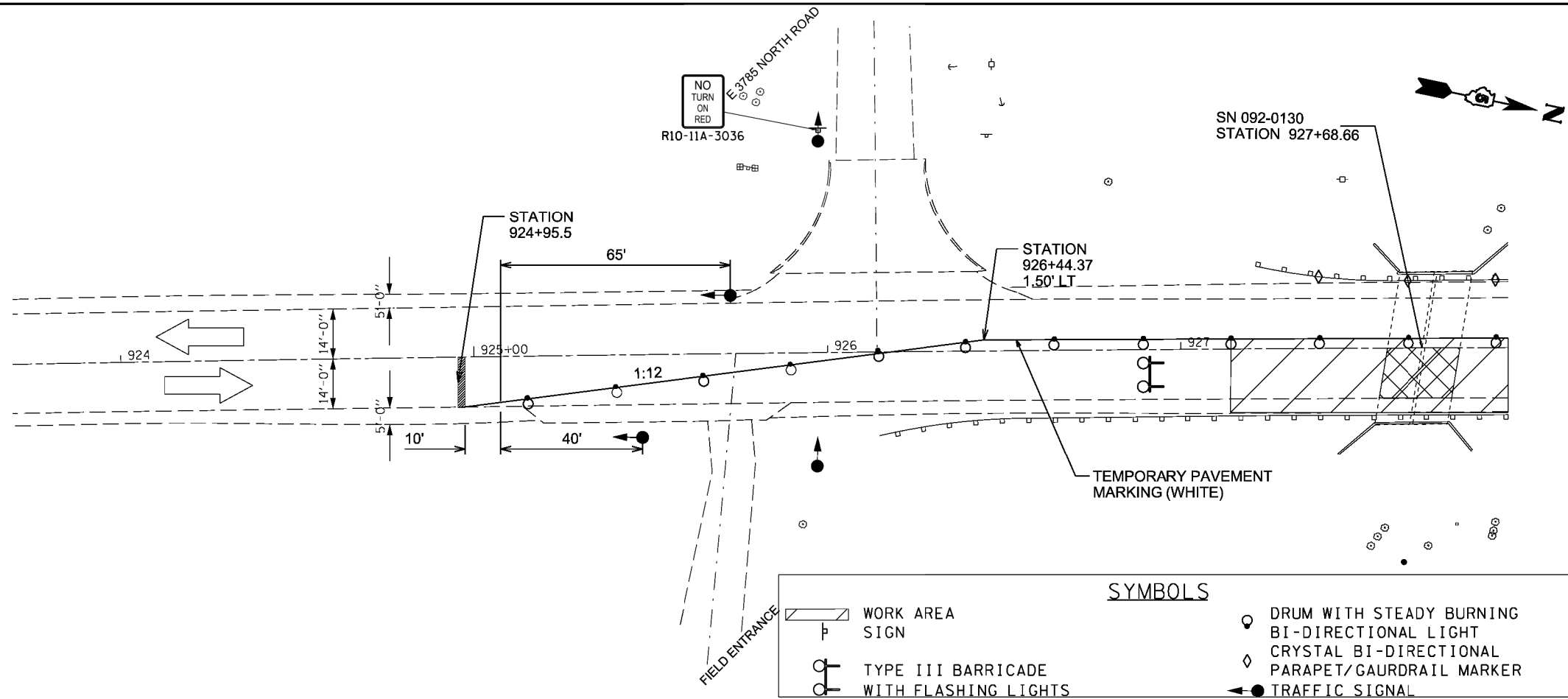


STAGE TWO

GENERAL NOTES FOR STAGE CONSTRUCTION:

1. ALL SIGNS, TRAFFIC CONTROL EQUIPMENT, AND TEMPORARY PAVEMENT MARKINGS SHALL BE IN ACCORDANCE WITH THE LATEST VERSION OF HIGHWAY STANDARD 701316 AND SHALL BE INCLUDED IN THE CONTRACT UNIT PRICE EACH FOR TRAFFIC CONTROL AND PROTECTION STANDARD 701316
2. ALL TEMPORARY BRIDGE TRAFFIC SIGNALS FOR CONSTRUCTION WILL BE MEASURED AS 1 (ONE) UNIT.
3. PLACE RCA IN ADVANCE OF SIGNALS AS DIRECTED BY ENGINEER.
4. ENTRANCE TO E 3785 NORTH ROAD IS TO REMAIN OPEN AT ALL TIMES.
5. EXISTING STOP SIGN AT ENTRANCE TO E 3785 NORTH ROAD IS TO BE COVERED
6. AN RCA WITH SIGNALS AND A SIGNAL AHEAD SIGN ARE TO BE PLACED ON E 3785 AS DIRECTED BY THE ENGINEER.
7. ALL PRIVATE ENTRANCES ARE TO REMAIN OPEN AT ALL TIMES.
8. ALL TRAFFIC CONTROL ITEMS NOT SHOWN ON STAGE I & II PLAN VIEW SHALL BE PER REQUIREMENTS OF TRAFFIC CONTROL AND PROTECTION STANDARD 701316.



FILE NAME =	USER NAME = jaymedf	DESIGNED -	REVISED -	STATE OF ILLINOIS DEPARTMENT OF TRANSPORTATION	STAGE II TRAFFIC CONTROL SN 092-0130 (LOCATION #2)	F.A. RTE.	SECTION	COUNTY	TOTAL SHEETS	SHEET NO.
ci:\p\work\p\idot\jaymedf\d0318412\0570411-sht-staging.dgn	DRAWN - DFJ	REVISED -	332			..	VERMILION	17	13	
PLOT SCALE = 40x9.0000 1" / 1m.	CHECKED -	REVISED -	POSTING MITIGATION FY2013-1			CONTRACT NO. 70A11				
DATE = 1/28/2013	DATE = 1/18/13	REVISED -	ILLINOIS			FED. AID PROJECT				