

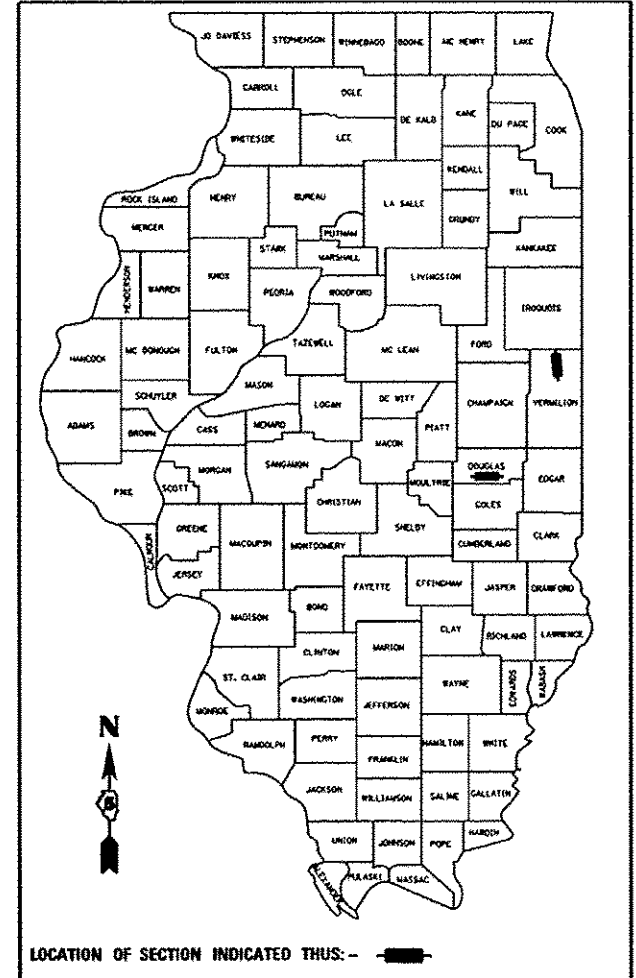
04-26-13 LETTING ITEM 145

STATE OF ILLINOIS
DEPARTMENT OF TRANSPORTATION
DIVISION OF HIGHWAYS

F.A. RTE.	SECTION	COUNTY	TOTAL SHEETS	SHEET NO.
*	**	***	17	1
ILLINOIS			CONTRACT NO. 70A11	

* ROUTES FAP 749 (IL 133) & FAP 332 (IL 1)
** POSTING MITIGATION FY2013-1
*** DOUGLAS / VERMILION

D-95-040-12



**PROPOSED
HIGHWAY PLANS**
VARIOUS ROUTES
SECTION POSTING MITIGATION FY2013-1
CULVERT REHABILITATION
DOUGLAS /VERMILION COUNTIES
VARIOUS LOCATIONS (POSTING MITIGATION)

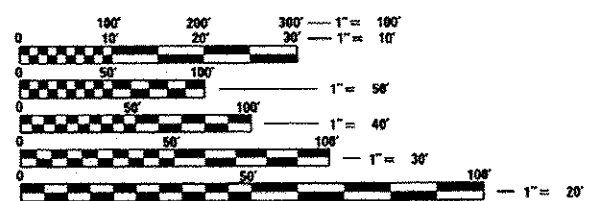
C-95-040-12

S.N. 021-8028
F.A.P. 749 (IL 133)
LOCATION #1
S.N. 092-0130
F.A.P. 332 (IL 1)
LOCATION #2

FOR LOCATION MAPS, SEE SHEET NO. 2
FOR INDEX OF SHEETS, SEE SHEET NO. 3
FOR SUMMARY OF QUANTITIES, SEE SHEET NO. 4

ADT:
LOCATION #1: 2300 (2012)
LOCATION #2: 5250 (2012)

DESIGN DESIGNATION
N/A



FULL SIZE PLANS HAVE BEEN PREPARED USING STANDARD ENGINEERING SCALES. REDUCED SIZED PLANS WILL NOT CONFORM TO STANDARD SCALES. IN MAKING MEASUREMENTS ON REDUCED PLANS, THE ABOVE SCALES MAY BE USED.

J.U.L.I.E.
JOINT UTILITY LOCATION INFORMATION FOR EXCAVATION
1-800-892-0123 TOWNSHIPS
OR 811 ARCOLA, GRANT

PROJECT ENGINEER: JASON STULTS
PROJECT MANAGER: RUSTIN KEYS
DESIGNER: DAVID JAYME
PHONE: (217) 465-4181
CONTRACT NO. 70A11

(SEE SHEET 2 FOR LOCATION MAPS)

GROSS LENGTH = 35.00 FT. = 0.007 MILE
NET LENGTH = 35.00 FT. = 0.007 MILE

STATE OF ILLINOIS
DEPARTMENT OF TRANSPORTATION
DIVISION OF HIGHWAYS

SUBMITTED JAN 28 20 13
Joseph S. Lowe
DEPUTY DIRECTOR OF HIGHWAYS, REGION ENGINEER
CFC

March 22 20 13
John D. Baranzelli, P.E.
acty ENGINEER OF DESIGN AND ENVIRONMENT

March 22 20 13
Omer Osman, P.E.
DIRECTOR OF HIGHWAYS, CHIEF ENGINEER

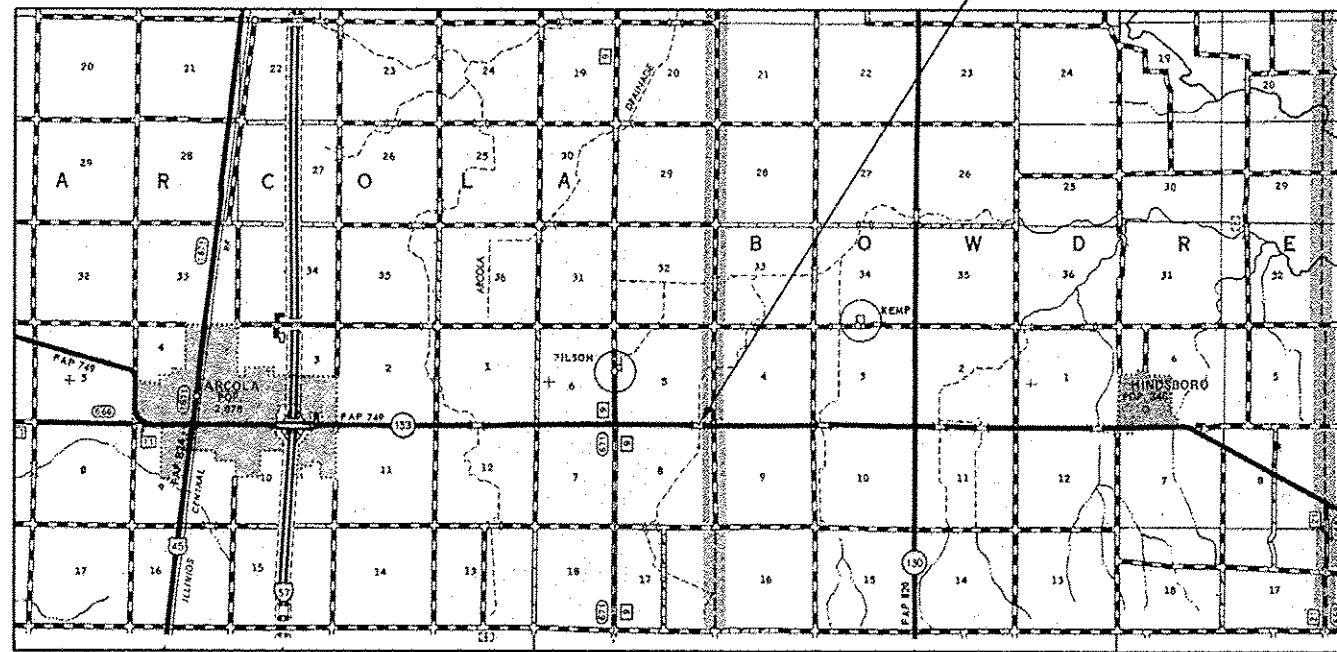
PRINTED BY THE AUTHORITY
OF THE STATE OF ILLINOIS

LOCATION #1

FAP 749 (IL 133)
DOUGLAS COUNTY



S.N. 021-8028
LOCATION #1
STA. 232 + 51



R 8 E

R 9 E

R 10 E

T 15 N

T 14 N



LOCATION #1

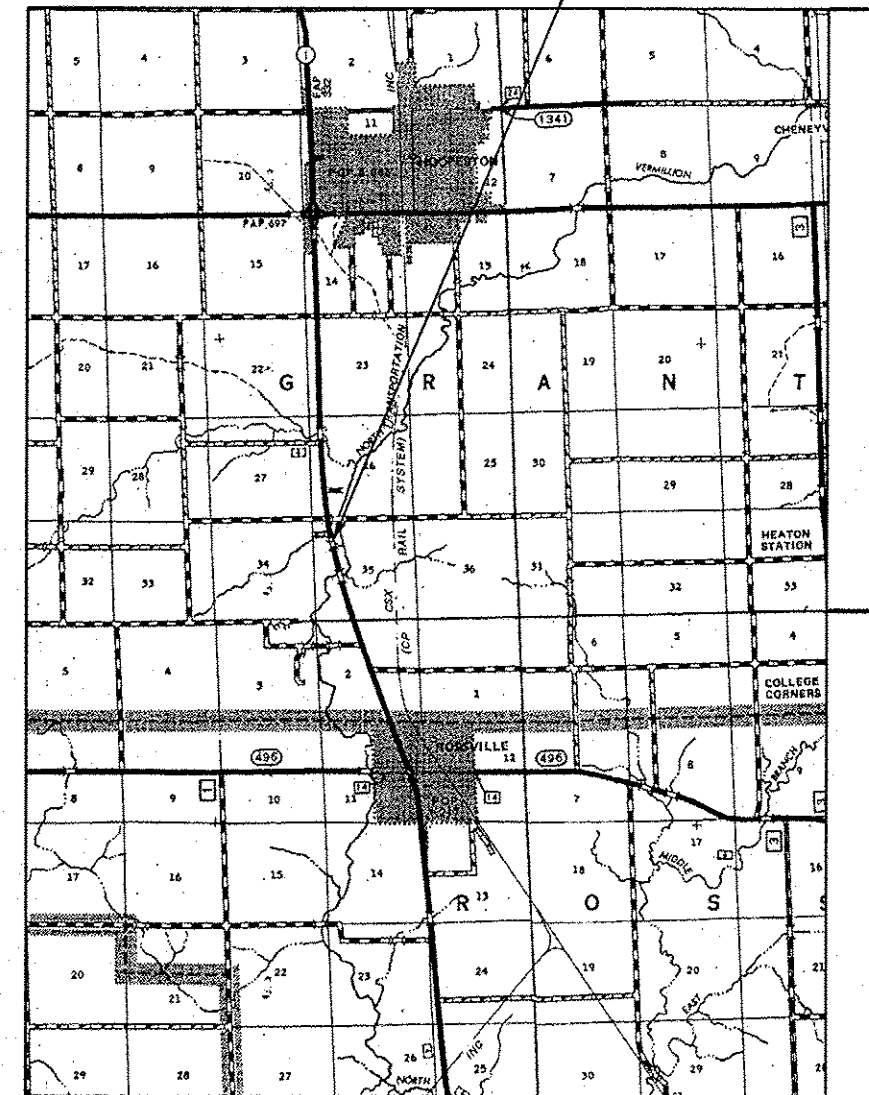
PROJECT BEGINS STA. 232 + 45.5
PROJECT ENDS STA. 232 + 56.5

LOCATION #2

FAP 332 (IL 1)
VERMILION COUNTY



S.N. 092-0130
LOCATION #2
STA. 927 + 68.66



R 12 W

R 11 W

T 24 N

T 23 N

T 22 N



LOCATION #2

PROJECT BEGINS STA. 927 + 56.66
PROJECT ENDS STA. 927 + 80.66

* ROUTES FAP 749 (IL 133) & FAP 332 (IL 1)
** POSTING MITIGATION FY2013-1
*** DOUGLAS / VERMILION

FILE NAME *	USER NAME * Joynef	DESIGNED -	REVISED -
ci:\pwork\pwork\joynef\108318412\0578\11-shl-cover.dgn		DRAWN - DFJ	REVISED -
		CHECKED -	REVISED -
		DATE - 12/20/12	REVISED -

STATE OF ILLINOIS
DEPARTMENT OF TRANSPORTATION

LOCATION MAPS

SCALE: SHEET NO. 01 OF 01 SHEETS STA. TO STA.

F.A. RTE.	SECTION	COUNTY	TOTAL SHEETS	SHEET NO.
*	**	***	17	2
CONTRACT NO. 70A11				
ILLINOIS FED. AID PROJECT				

INDEX OF SHEETS

<u>SHEET NO.</u>	<u>DESCRIPTION</u>
1	COVER SHEET
2	LOCATION MAPS
3	INDEX OF SHEETS, LIST OF HIGHWAY STANDARDS, GENERAL NOTES
4	SUMMARY OF QUANTITIES
5	TYPICAL SECTIONS
6	PLAN SHEETS
7 - 8	S.N. 021 - 8028 SLAB DETAILS
09 - 10	S.N. 092 - 0130 SLAB DETAILS
11 - 13	STAGING DETAILS
13 - 17	PAVEMENT MARKING AND MARKERS (RURAL & URBAN APPLICATIONS) DETAIL

GENERAL NOTES

G. N. -100
 ENGLISH UNITS OF MEASUREMENT SHALL GOVERN OVER AND SUPERSEDE ANY METRIC UNITS SHOWN IN THIS CONTRACT. WHERE INCLUDED, METRIC UNITS ARE FOR INFORMATION ONLY.

G. N. -100A
 ELECTRONIC FILES AND/OR ELECTRONIC SURVEY INFORMATION INCLUDING CADD FILES WILL NOT BE AVAILABLE TO THE CONTRACTOR.

NO COMMITMENTS

LIST OF HIGHWAY STANDARDS

<u>STANDARD NO.</u>	<u>DESCRIPTION</u>
000001-06	STANDARD SYMBOLS, ABBREVIATIONS AND PATTERNS
001001-02	AREAS OF REINFORCEMENT BARS
001006	DECIMAL OF AN INCH AND A FOOT
701011-03	OFF-ROAD MOVING OPERATIONS, 2L, 2W, DAY ONLY
701301-04	LANE CLOSURE, 2L, 2W, SHORT TIME OPERATIONS
701311-03	LANE CLOSURE, 2L, 2W, MOVING OPERATIONS- DAY ONLY
701316-07	LANE CLOSURE, 2L, 2W, BRIDGE REPAIR, FOR SPEEDS > 45 MPH
701901-02	TRAFFIC CONTROL DEVICES
780001-03	TYPICAL PAVEMENT MARKINGS

* ROUTES FAP 749 (IL 133) & FAP 332 (IL 1)
 ** POSTING MITIGATION FY2013-1
 *** DOUGLAS / VERMILION

FILE NAME *	USER NAME * jgmmedf	DESIGNED -	REVISED -	STATE OF ILLINOIS	INDEX OF SHEETS /GENERAL NOTES	F.A. RTE.	SECTION	COUNTY	TOTAL SHEETS	SHEET NO.
c:\pwork\pvidot\jgmmedf\00318412\0578411-sh1-gennote.dgn	11-sh1-gennote.dgn	DRAWN - DFJ	REVISED -	DEPARTMENT OF TRANSPORTATION	LIST OF HIGHWAY STANDARDS	*	**	***	17	3
PLOT SCALE * 40,0000 / in.	PLOT DATE * 1/29/2013	CHECKED -	REVISED -		SCALE:	SHEET NO. 01 OF 01 SHEETS	STA.	TO STA.	CONTRACT NO. 70A11	
		DATE - 12/20/12	REVISED -						[ILLINOIS] FED. AID PROJECT	

SUMMARY OF QUANTITIES

LOCATION OF WORK: DOUGLAS CO.	VERMILION CO.
F. A. P. 749	F. A. P. 332
IL 133	IL 1
S. N. 021-8028	S. N. 092-0130
LOCATION #1	LOCATION #2
RURAL	RURAL
FUNDING BREAKOUT: 100% STATE	100% STATE
CONSTRUCTION TYPE CODE: 0014	0014

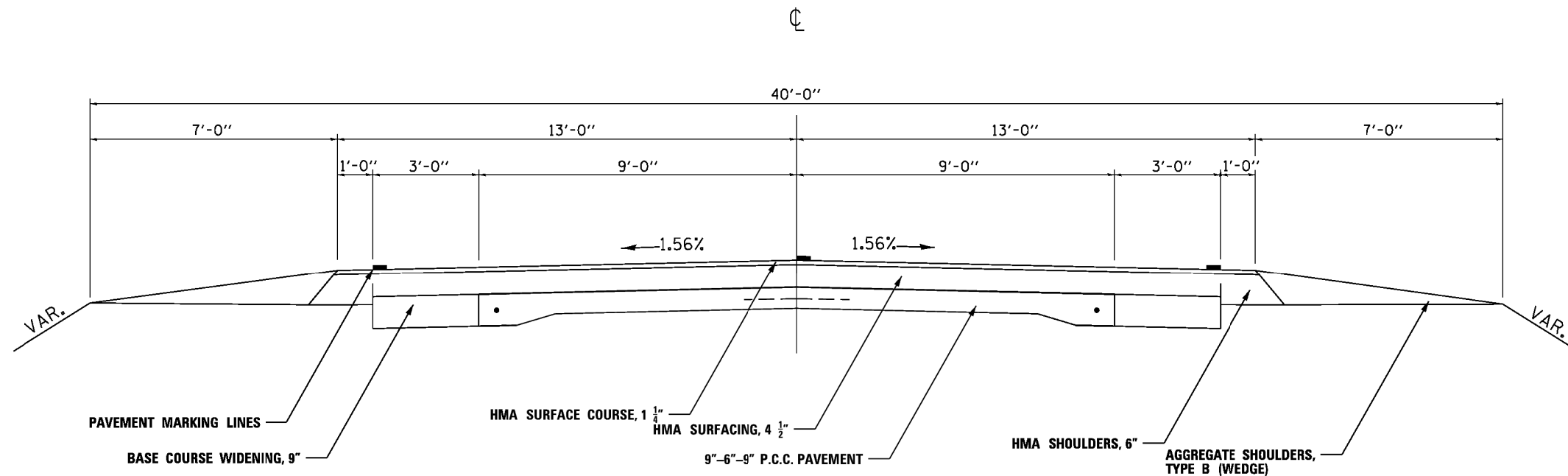
CODE NO.	DESCRIPTION	UNIT	TOTAL QUANTITY	QUANTITY	QUANTITY
48102100	AGGREGATE WEDGE SHOULDER, TYPE B	TON	2.0	0.8	1.2
50300255	CONCRETE SUPERSTRUCTURE	CU YD	24.0	7.1	16.9
50500405	F & E STRUCTURAL STEEL	POUND	2,650	0	2,650
50800205	REINFORCEMENT BARS, EPOXY COATED	POUND	8,640	2,110	6,530
50800515	BAR SPLICERS	EACH	82	32	50
67100100	MOBILIZATION	L SUM	1	0.5	0.5
70100100	TRAFFIC CONTROL AND PROTECTION, STANDARD 701316	EACH	2	1	1
70103815	TRAFFIC CONTROL SURVEILLANCE	CAL DA	14	7	7
70106500	TEMPORARY BRIDGE TRAFFIC SIGNALS	EACH	2	1	1
70301000	WORK ZONE PAVEMENT MARKING REMOVAL	SQ FT	715	400	315
78001110	PAINT PAVEMENT MARKING - LINE 4"	FOOT	120	40	80
X4422000	PARTIAL DEPTH REMOVAL, (VARIABLE DEPTH)	SQ YD	107.7	31.8	75.9

* ROUTES FAP 749 (IL 133) & FAP 332 (IL 1)
 ** POSTING MITIGATION FY2013-1
 *** DOUGLAS / VERMILION

FILE NAME	USER NAME	DESIGNED	REVISED	STATE OF ILLINOIS DEPARTMENT OF TRANSPORTATION	SUMMARY OF QUANTITIES				F.A. RTE.	SECTION	COUNTY	TOTAL SHEETS	SHEET NO.
oi\pwwork\pwwork\jgmedf\vd8318412\0578	11-sh1-S00.dgn	DRAWN - DFJ	REVISED -		SCALE: SHEET NO. 1 OF 1 SHEETS STA. TO STA.				*	**	***	17	4
PLOT SCALE = 48.8008' / 1"	PLOT DATE = 1/22/2013	CHECKED -	REVISED -						CONTRACT NO. 70A11				
		DATE - 1/22/13	REVISED -						ILLINOIS FED. AID PROJECT				

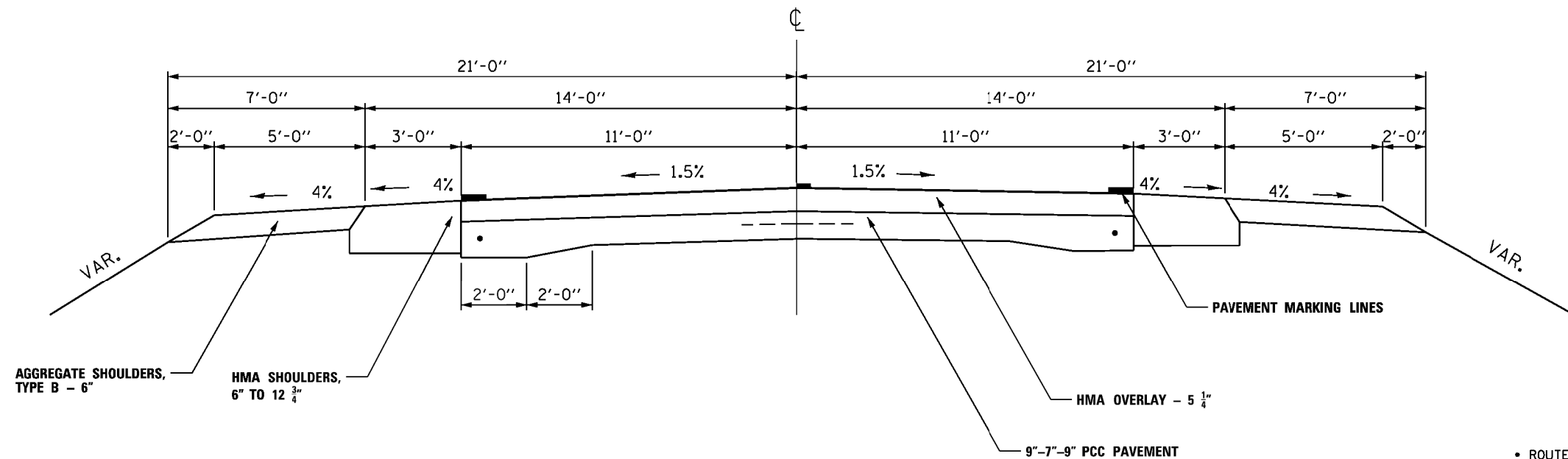
EXISTING TYPICAL SECTION

LOCATION #1 (S.N. 021-8028)
 FAP 749 (IL 133)
 STA. 158+45.50 TO STA. 243+00.00



EXISTING TYPICAL SECTION

LOCATION #2 (S.N. 092-0130)
 FAP 332 (IL 1)
 STA. 831+00.00 TO STA. 1084+50.00

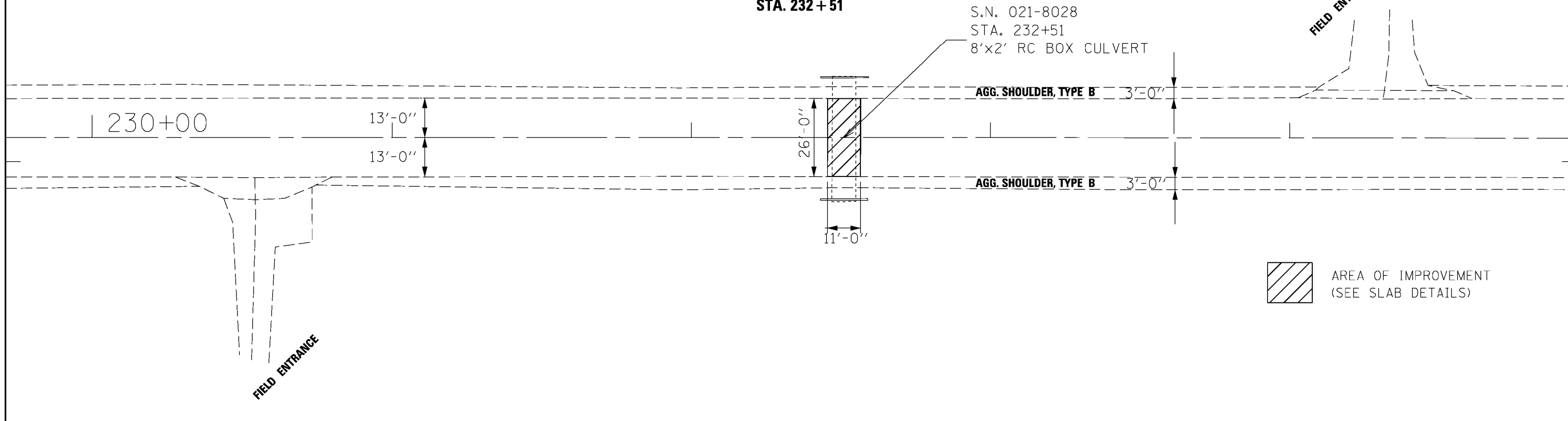


• ROUTES FAP 749 (IL 133) & FAP 332 (IL 1)
 •• POSTING MITIGATION FY2013-1
 ••• DOUGLAS / VERMILION

FILE NAME =	USER NAME = jeymedf	DESIGNED -	REVISED - -	STATE OF ILLINOIS DEPARTMENT OF TRANSPORTATION	TYPICAL SECTIONS			F.A. RTE.	SECTION	COUNTY	TOTAL SHEETS	SHEET NO.
ci:\pwork\pwork\jeymedf\d0318412\0570411-sh-typical.dgn		DRAWN - DFJ	REVISED - -		SCALE:	SHEET NO. 01 OF 01 SHEETS	STA.	TO STA.	••	•••	17	5
		CHECKED -	REVISED - -		CONTRACT NO. 70A11							
		DATE - 12/20/12	REVISED - -		ILLINOIS FED. AID PROJECT							

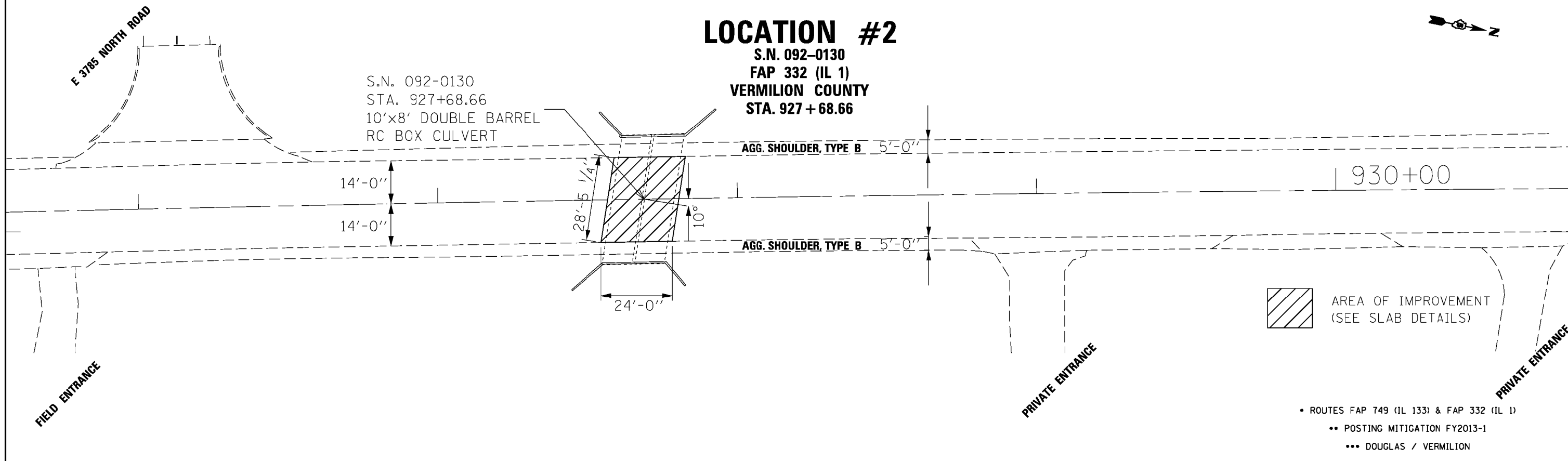
LOCATION #1

S.N. 021-8028
 FAP 749 (IL 133)
 DOUGLAS COUNTY
 STA. 232 + 51



LOCATION #2

S.N. 092-0130
 FAP 332 (IL 1)
 VERMILION COUNTY
 STA. 927 + 68.66



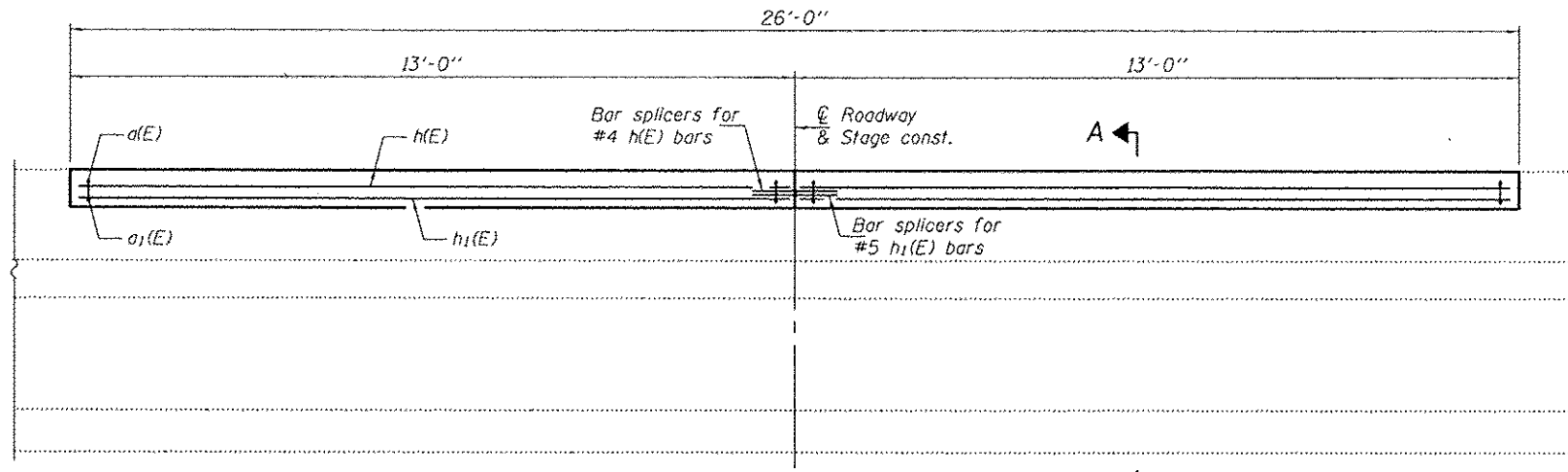
• ROUTES FAP 749 (IL 133) & FAP 332 (IL 1)
 •• POSTING MITIGATION FY2013-1
 ••• DOUGLAS / VERMILION

FILE NAME =	USER NAME = jeymedf	DESIGNED -	REVISED -
ci:\pwork\pwork\jeymedf\d0318412\0570411-sht-plen.dgn		DRAWN - DFJ	REVISED -
#MODELNAME*	PLOT SCALE = 100.0000' / 1" =	CHECKED -	REVISED -
	PLOT DATE = 1/22/2013	DATE - 12/20/12	REVISED -

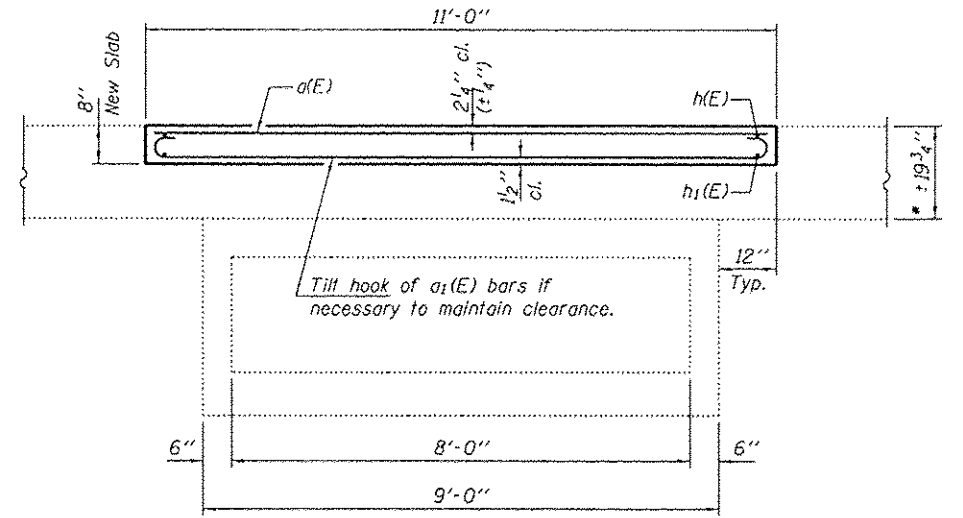
STATE OF ILLINOIS
 DEPARTMENT OF TRANSPORTATION

PLAN SHEET		F.A. RTE.	SECTION	COUNTY	TOTAL SHEETS	SHEET NO.
LOCATION # 1 & LOCATION # 2		*	**	***	17	6
SCALE:		SHEET 01 OF 01 SHEETS		STA.	TO STA.	
				ILLINOIS FED. AID PROJECT		

CONTRACT NO. 70A11



LONGITUDINAL SECTION



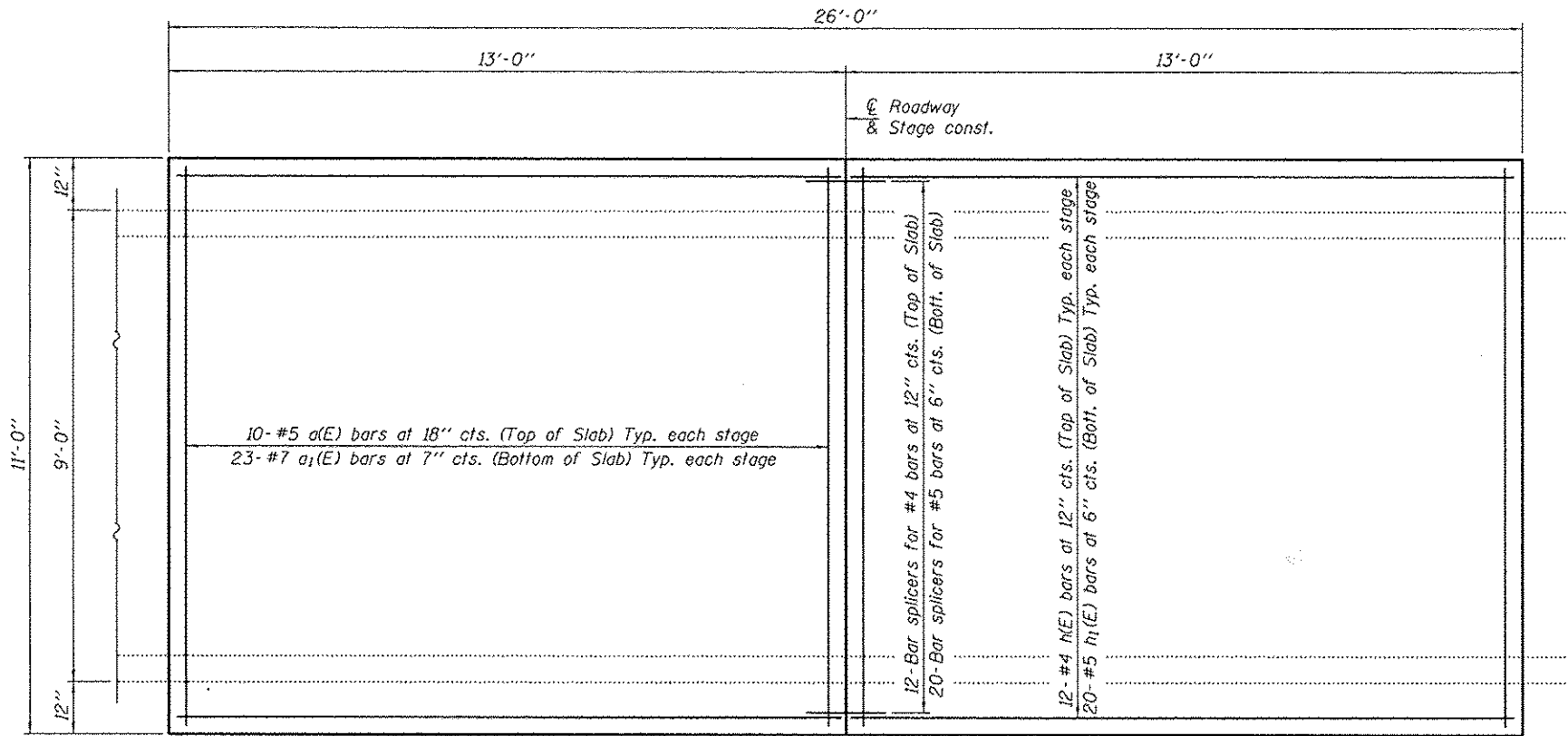
SECTION A-A

* Remove per Partial Depth Removal table and replace with 8" concrete slab as shown. Slope to match roadway. Cost of removal included with Partial Depth Removal (Variable Depth). Removal to be limited to the 8" shown.

PARTIAL DEPTH REMOVAL

(Based on coring report)

Layer	EB	WB
HMA	8"	5.5"
PCC	0"	2.5"
Total	8"	8"



PLAN

GENERAL NOTES

Plan dimensions and details relative to existing plans are subject to nominal construction variations. The Contractor shall field verify existing dimensions and details affecting new construction and make necessary approved adjustments prior to construction or ordering of materials. Such variations shall not be cause for additional compensation for a change in scope of the work, however, the Contractor will be paid for the quantity actually furnished at the unit price bid for the work.

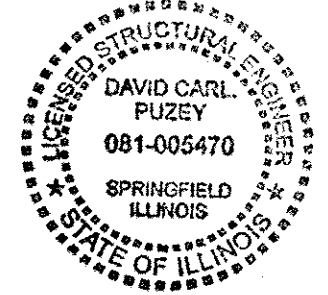
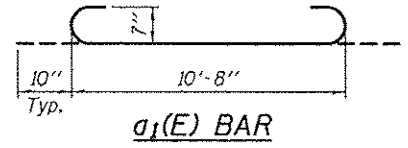
Reinforcement bars designated (E) shall be epoxy coated. The slab surface shall have its final finish tined according to Article 420.09(e)(1) of the Standard Specifications. Cost included with Concrete Superstructure.

BILL OF MATERIAL

Bar	No.	Size	Length	Shape
a(E)	20	#5	10'-8"	—
a1(E)	46	#7	12'-4"	U
h(E)	24	#4	12'-8"	—
h1(E)	40	#5	12'-8"	—
Bar Splicers			Each	32
Partial Depth Removal (Variable Depth)			Sq. Yds.	31.8
Reinforcement Bars, Epoxy Coated			Pound	2110
Concrete Superstructure			Cu. Yds.	7.1

DESIGN STRESSES

FIELD UNITS
 $f'_c = 3,500$ psi
 $f_y = 60,000$ psi (Reinf.)



EXPIRES 11-30-2014

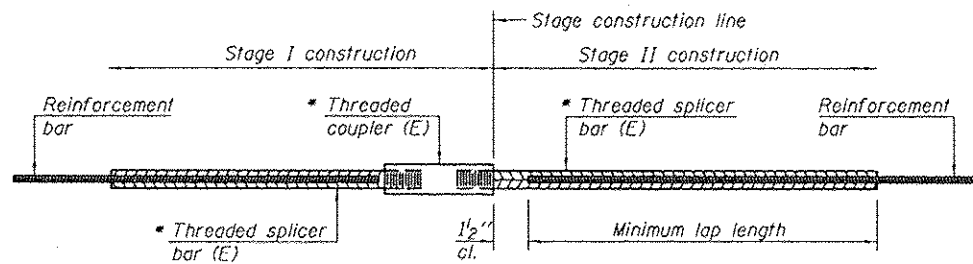
DESIGNED DAB	EXAMINED Timothy A. Puzey	DATE - MARCH 14, 2013
CHECKED VHV	PASSED	
DRAWN ballva		
CHECKED DAB		

STATE OF ILLINOIS
DEPARTMENT OF TRANSPORTATION

SLAB DETAILS
SN 021-8028

SHEET NO. 1 OF 2 SHEETS

F.A.P. RTE.	SECTION	COUNTY	TOTAL SHEETS	SHEET NO.
749	POSTING MITIGATION FY2013-1	DOUGLAS	17	7
CONTRACT NO. 70A11				
[ILLINOIS] FED. AID PROJECT				



STANDARD BAR SPLICER ASSEMBLY

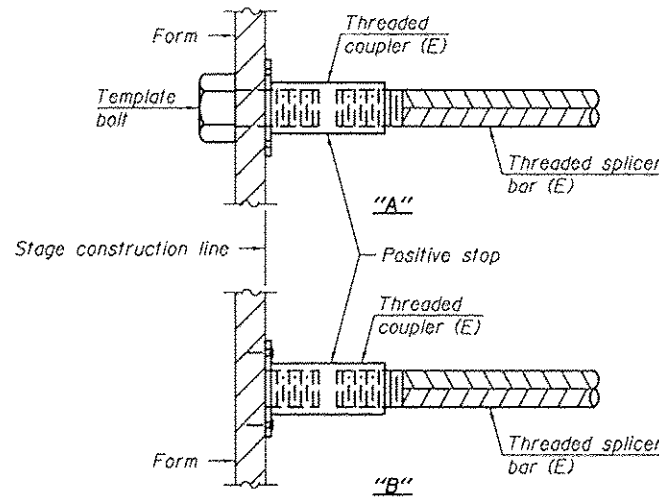
Minimum Lap Lengths					
Bar size to be spliced	Table 1	Table 2	Table 3	Table 4	Table 5
3, 4	1'-5"	1'-11"	2'-1"	2'-4"	2'-3"
5	1'-9"	2'-5"	2'-7"	2'-11"	2'-10"
6	2'-1"	2'-11"	3'-1"	3'-6"	3'-4"
7	2'-9"	3'-10"	4'-2"	4'-8"	4'-6"
8	3'-8"	5'-1"	5'-5"	6'-2"	5'-10"
9	4'-7"	6'-5"	6'-10"	7'-9"	7'-5"

- Table 1: Black bar, 0.8 Class C
- Table 2: Black bar, Top bar lap, 0.8 Class C
- Table 3: Epoxy bar, 0.8 Class C
- Table 4: Epoxy bar, Top bar lap, 0.8 Class C
- Table 5: Epoxy bar, Top bar lap, Class B

Threaded splicer bar length = min. lap length + 1 1/2" + thread length

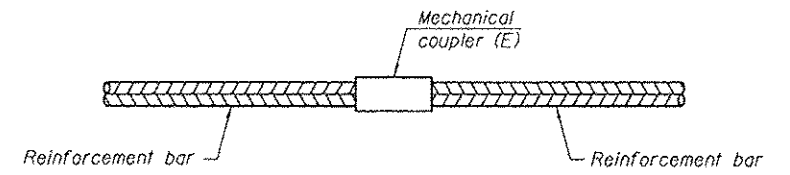
- Epoxy not required on Bar Splicer Assembly components used in conjunction with black bars.

Location	Bar size	No. assemblies required	Table for minimum lap length
Top of slab	#4	12	3
Bottom of slab	#5	20	3



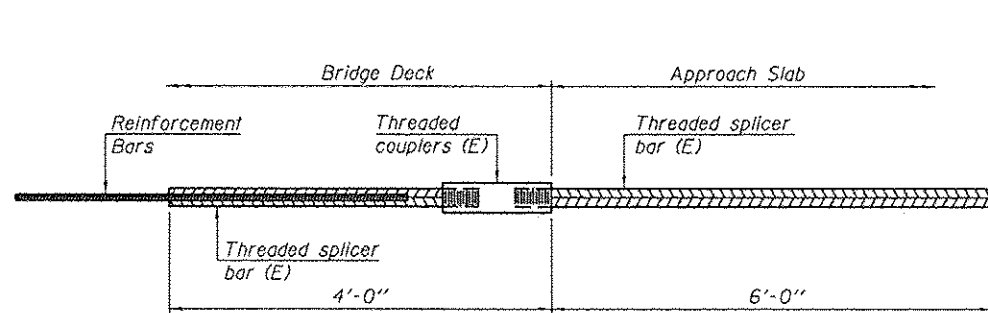
INSTALLATION AND SETTING METHODS

"A" : Set bar splicer assembly by means of a template bolt.
 "B" : Set bar splicer assembly by nailing to wood forms or cementing to steel forms.
 (E) : Indicates epoxy coating.



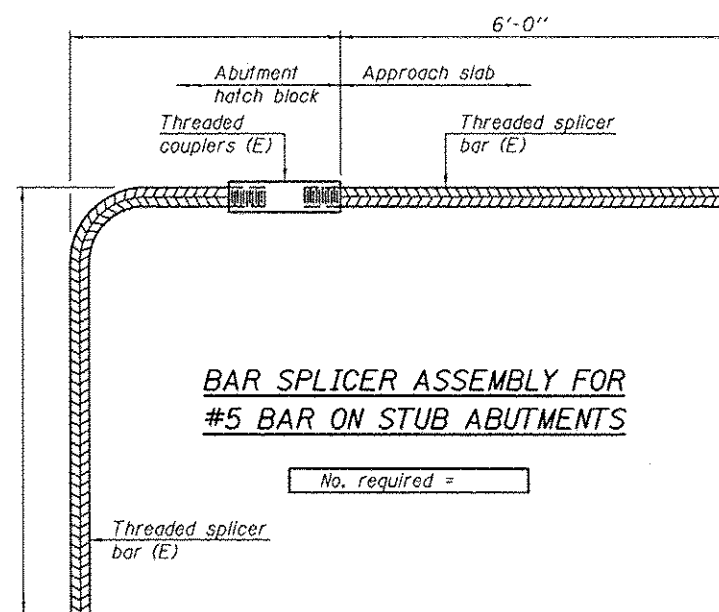
STANDARD MECHANICAL SPLICER

Location	Bar size	No. assemblies required



BAR SPLICER ASSEMBLY FOR #5 BAR ON INTEGRAL OR SEMI-INTEGRAL ABUTMENTS

No. required =



BAR SPLICER ASSEMBLY FOR #5 BAR ON STUB ABUTMENTS

No. required =

NOTES

- Splicer bars shall be deformed with threaded ends and have a minimum 60 ksi yield strength.
- All reinforcement shall be lapped and tied to the splicer bars.
- Bar splicer assemblies shall be epoxy coated according to the requirements for reinforcement bars. See Section 508 of the Standard Specifications.
- See special provision for Mechanical Splicers.
- See approved list of bar splicer assemblies and mechanical splicers for alternatives.

BSD-1

7-1-10

DESIGNED DAB	EXAMINED <i>Timothy A. ...</i>	DATE - MARCH 14, 2013
CHECKED VHV	PASSED <i>Carl ...</i>	
DRAWN baliva		
CHECKED DAB VHV		

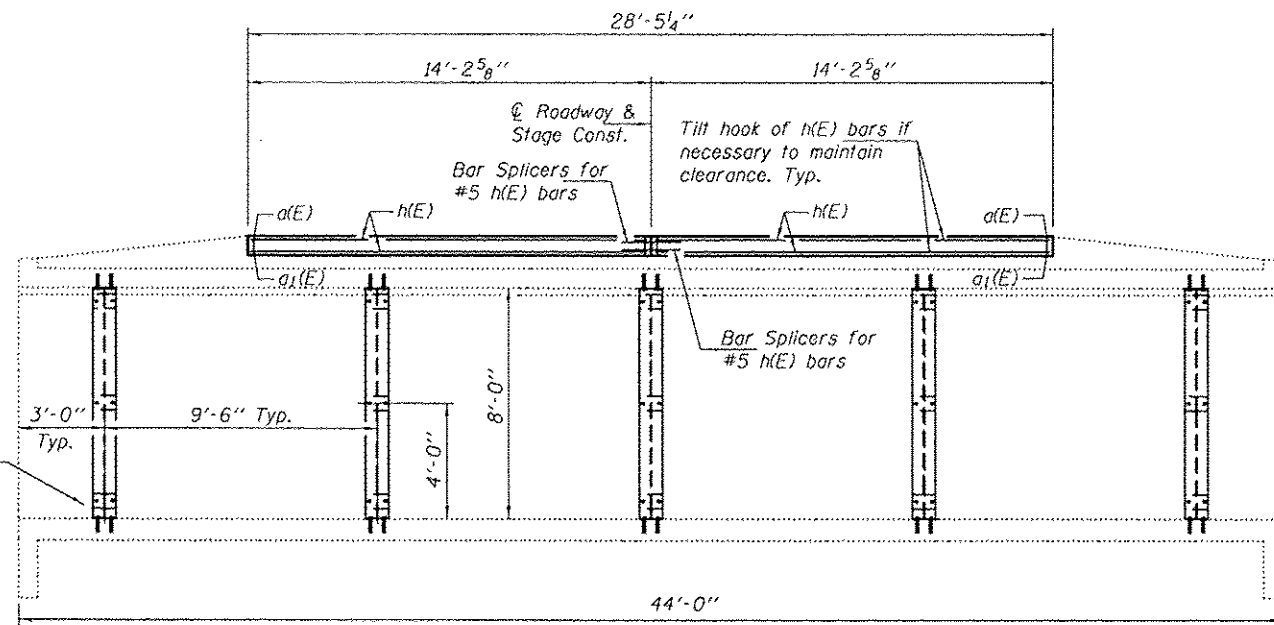
STATE OF ILLINOIS
DEPARTMENT OF TRANSPORTATION

BAR SPLICER ASSEMBLY AND MECHANICAL SPLICER DETAILS
SN 021-8028

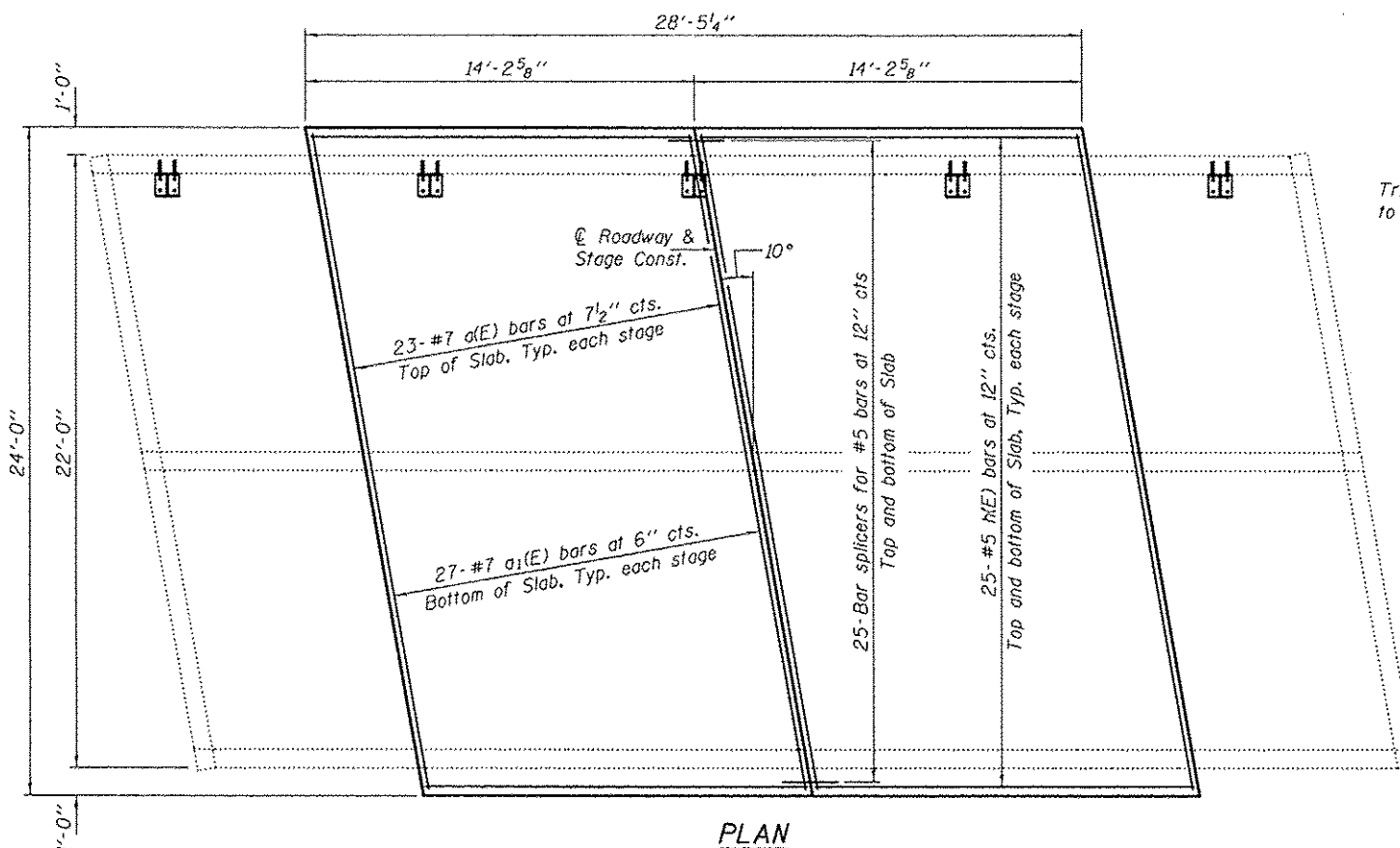
F.A.P. RTE. 749	SECTION POSTING MITIGATION FY2013-1	COUNTY DOUGLAS	TOTAL SHEETS 17	SHEET NO. 8
				CONTRACT NO. 70A11
ILLINOIS FED. AID PROJECT				

SHEET NO. 2 OF 2 SHEETS

Sediment removal is required to install steel column. Cost included with Furnishing & Erecting Structural Steel. Typ.



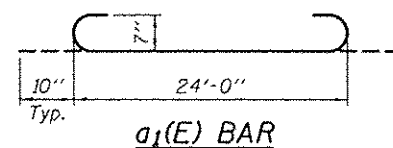
LONGITUDINAL SECTION



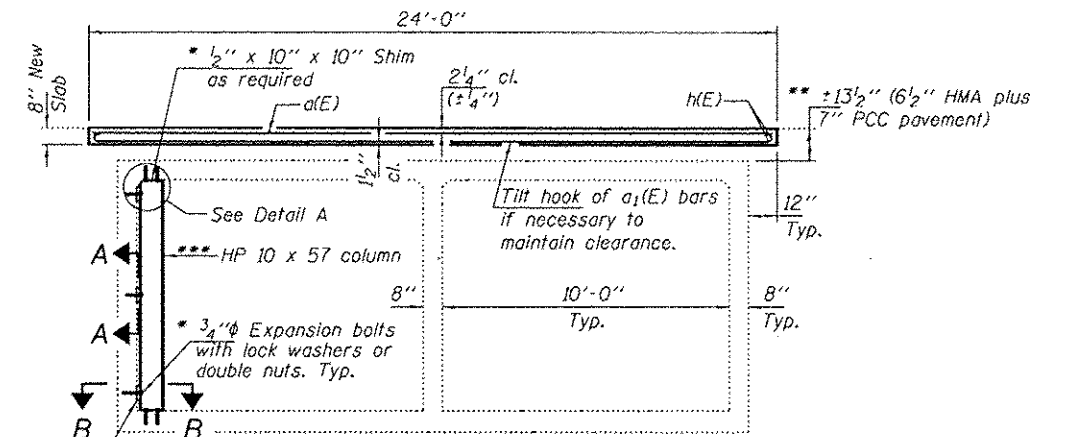
PLAN

DESIGN STRESSES

FIELD UNITS
 $f'_c = 3,500$ psi
 $f_y = 60,000$ psi (Reinf.)



a1(E) BAR



CROSS SECTION

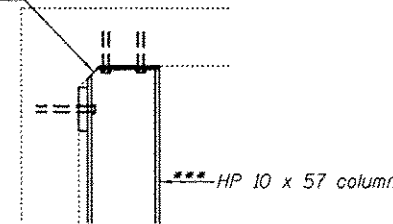
(Looking East)

*** Cost included with Furnishing & Erecting Structural Steel.

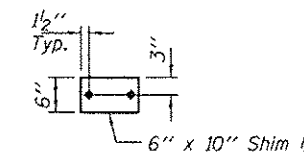
*** Remove 6 1/2" of existing HMA overlay and 1 1/2" of PCC pavement and replace with 8" concrete slab as shown. Slope to match roadway. Cost of removal included with Partial Depth Removal (Variable Depth). Maximum removal depth to be limited to 8".

*** North wall only.

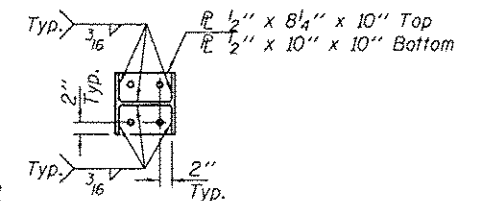
Trim HP as required to clear fillet



DETAIL A



SECTION A-A



SECTION B-B

GENERAL NOTES

Plan dimensions and details relative to existing plans are subject to nominal construction variations. The Contractor shall field verify existing dimensions and details affecting new construction and make necessary approved adjustments prior to construction or ordering of materials. Such variations shall not be cause for additional compensation for a change in scope of the work, however, the Contractor will be paid for the quantity actually furnished at the unit price bid for the work.

Reinforcement bars designated (E) shall be epoxy coated. The slab surface shall have its final finish lined according to Article 420.09(e)(1) of the Standard Specifications. Cost included with Concrete Superstructures.

All structural steel shall conform to AASHTO Classification M-270 Gr. 36, unless otherwise noted.

All structural steel shall be shop painted with the inorganic zinc rich primer per AASHTO M300, Type I. Cost included with Furnishing and Erecting Structural Steel.

TOTAL BILL OF MATERIAL

Bar	No.	Size	Length	Shape
a1(E)	46	#7	24'-0"	—
a1(E)	54	#7	25'-8"	—
h(E)	100	#5	13'-10"	—
Bar Splicers			Each	50
Partial Depth Removal (Variable Depth)			Sq. Yd.	75.9
Reinforcement Bars, Epoxy Coated			Pound	6530
Concrete Superstructure			Cu. Yd.	16.9
Furnishing & Erecting Structural Steel			Pound	2650

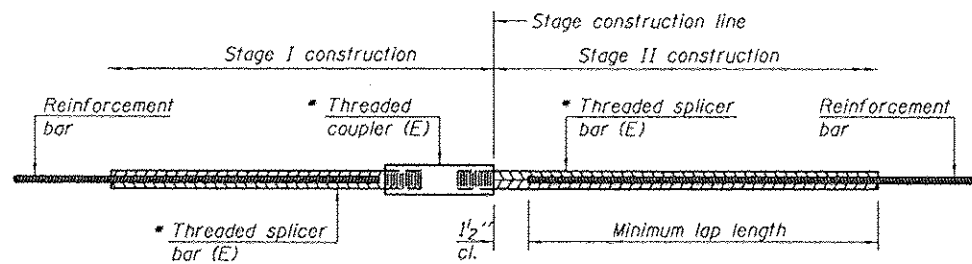


DESIGNED DAB	EXAMINED Trinity A. O'Connell	DATE MARCH 14, 2013
CHECKED VHV	PASSED	REVISOR
DRAWN bolva		REVISOR
CHECKED DAB		

STATE OF ILLINOIS
 DEPARTMENT OF TRANSPORTATION

GENERAL PLAN & ELEVATION
 ILLINOIS ROUTE 1 OVER N. FORK VERMILION RIVER
 SN 092-0130

F.A.P. RTE. 332	SECTION POSTING MITIGATION FY2013-1	COUNTY VERMILION	TOTAL SHEETS 17	SHEET NO. 9
				CONTRACT NO. 70A11
ILLINOIS FED. AID PROJECT				



STANDARD BAR SPLICER ASSEMBLY

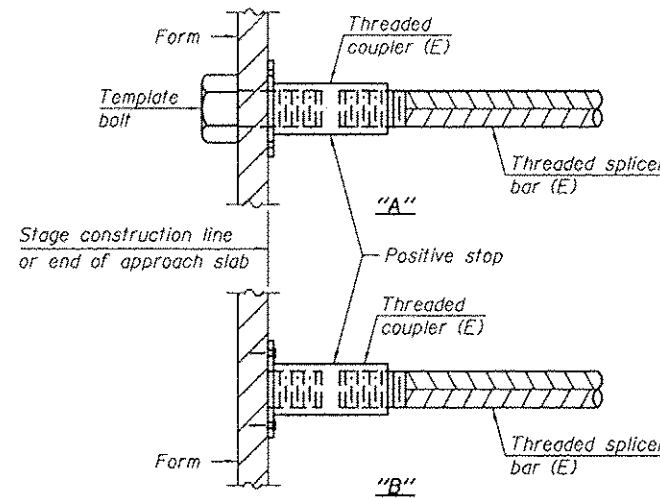
Bar size to be spliced	Minimum Lap Lengths					
	Table 1	Table 2	Table 3	Table 4	Table 5	Table 6
3, 4	1'-5"	1'-11"	2'-1"	2'-4"	2'-7"	2'-11"
5	1'-9"	2'-5"	2'-7"	2'-11"	3'-3"	3'-8"
6	2'-1"	2'-11"	3'-1"	3'-6"	3'-10"	4'-5"
7	2'-9"	3'-10"	4'-2"	4'-8"	5'-2"	5'-10"
8	3'-8"	5'-1"	5'-5"	6'-2"	6'-9"	7'-8"
9	4'-7"	6'-5"	6'-10"	7'-9"	8'-7"	9'-8"

- Table 1: Black bar, 0.8 Class C
- Table 2: Black bar, Top bar lap, 0.8 Class C
- Table 3: Epoxy bar, 0.8 Class C
- Table 4: Epoxy bar, Top bar lap, 0.8 Class C
- Table 5: Epoxy bar, Class C
- Table 6: Epoxy bar, Top bar top, Class C

Threaded splicer bar length = min. lap length + 1/2" + thread length

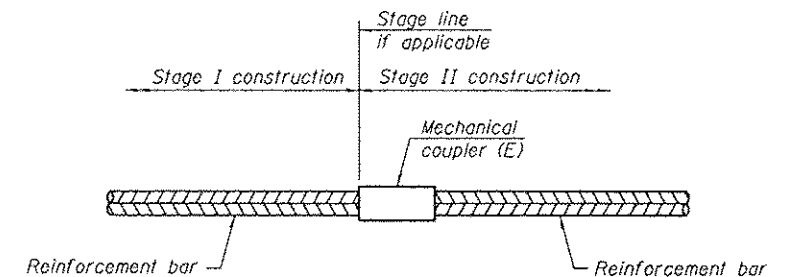
* Epoxy not required on Bar Splicer Assembly components used in conjunction with black bars.

Location	Bar size	No. assemblies required	Table for minimum lap length
Top of Slab	#5	25	3
Bottom of Slab	#5	25	3



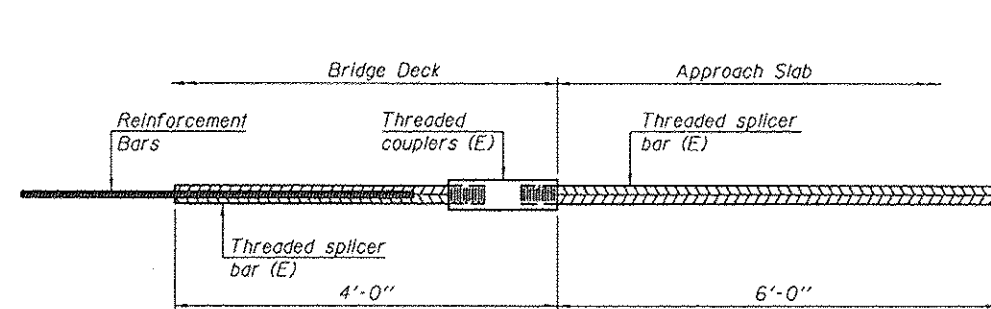
INSTALLATION AND SETTING METHODS

"A" : Set bar splicer assembly by means of a template bolt.
 "B" : Set bar splicer assembly by nailing to wood forms or cementing to steel forms.
 (E) : Indicates epoxy coating.



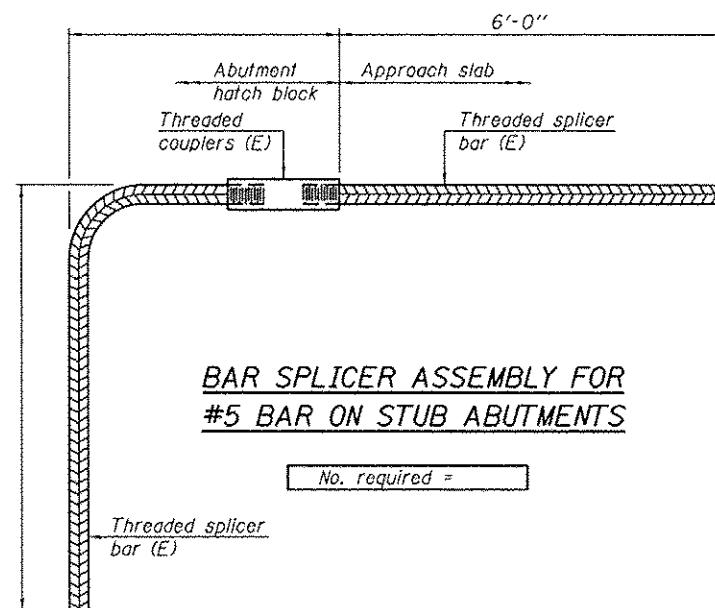
STANDARD MECHANICAL SPLICER

Location	Bar size	No. assemblies required



BAR SPLICER ASSEMBLY FOR #5 BAR ON INTEGRAL OR SEMI-INTEGRAL ABUTMENTS

No. required =



BAR SPLICER ASSEMBLY FOR #5 BAR ON STUB ABUTMENTS

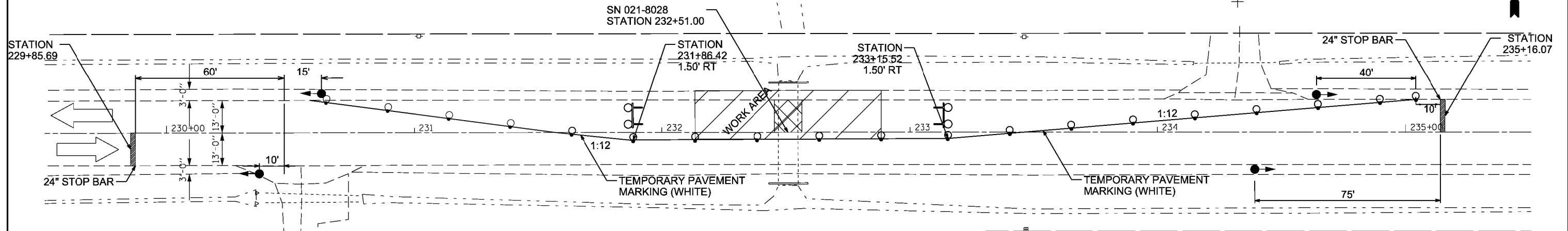
No. required =

NOTES

Splicer bars shall be deformed with threaded ends and have a minimum 60 ksi yield strength.
 All reinforcement shall be lapped and tied to the splicer bars.
 Bar splicer assemblies shall be epoxy coated according to the requirements for reinforcement bars. See Section 508 of the Standard Specifications.
 See approved list of bar splicer assemblies and mechanical splicers for alternatives.

BSD-1 1-27-12

STAGE ONE

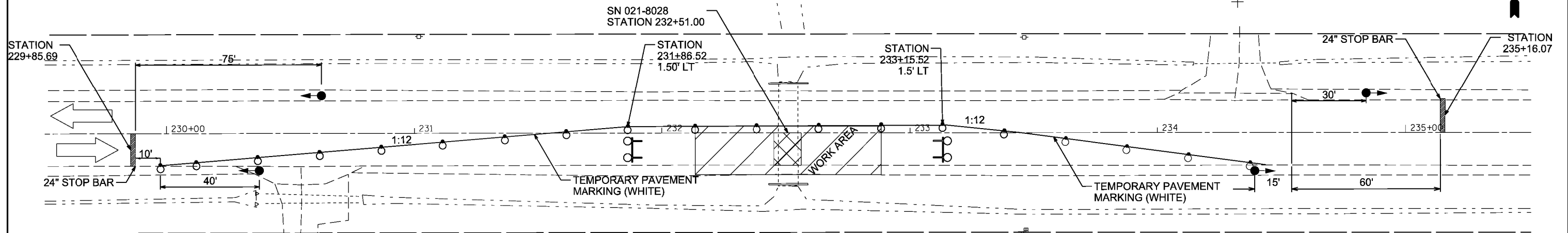


- STAGE 1 NOTES**
1. ERECT SIGNS, TRAFFIC SIGNALS, TRAFFIC CONTROL DEVICES ETC. ACCORDING TO TRAFFIC CONTROL STANDARD 701316 AND AS SHOWN ON THIS PLAN.
 2. PLACE TEMPORARY PAVEMENT MARKING LINE TO ALLOW FOR A 10'-0" TRAFFIC LANE. REMOVE ANY CONFLICTING STRIPING.
 3. REMOVE THE STAGE I PORTION OF THE EXISTING PAVEMENT.
 4. CONSTRUCT THE STAGE I PORTION OF THE NEW CONCRETE SLAB.

SYMBOLS

	WORK AREA		DRUM WITH STEADY BURNING BI-DIRECTIONAL LIGHT
	SIGN		CRYSTAL BI-DIRECTIONAL PARAPET/GAURDRAIL MARKER
	TYPE III BARRICADE WITH FLASHING LIGHTS		TRAFFIC SIGNAL

STAGE TWO



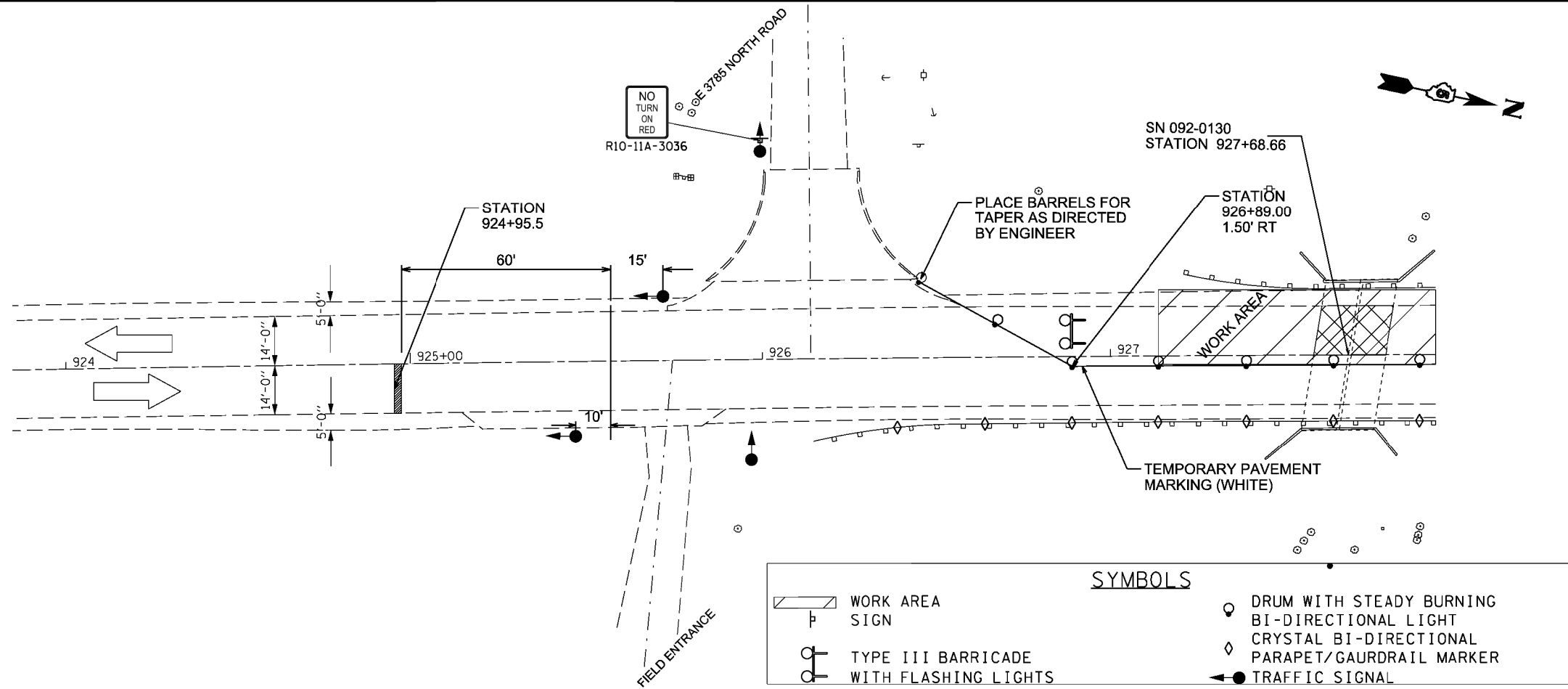
- STAGE 2 NOTES**
1. RELOCATE SIGNS, TRAFFIC SIGNALS, TEMPORARY BARRIERS, ETC. ACCORDING TO TRAFFIC CONTROL STANDARD 701316 AND AS SHOWN ON THIS PLAN.
 2. PLACE TEMPORARY PAVEMENT MARKING LINE TO ALLOW FOR A 10'-0" TRAFFIC LANE. REMOVE ANY CONFLICTING STRIPING.
 3. REMOVE THE STAGE II PORTION OF THE EXISTING PAVEMENT.
 4. CONSTRUCT THE STAGE II PORTION OF THE NEW CONCRETE SLAB.
 5. REMOVE TEMPORARY BARRIERS, SIGNALS, WORK ZONE PAVEMENT MARKING, AND SIGNS ASSOCIATED WITH TRAFFIC CONTROL STANDARD 701316.
- GENERAL NOTES FOR STAGE CONSTRUCTION:**
1. ALL SIGNS, TRAFFIC CONTROL EQUIPMENT, AND TEMPORARY PAVEMENT MARKINGS SHALL BE IN ACCORDANCE WITH THE LATEST VERSION OF HIGHWAY STANDARD 701316 AND SHALL BE INCLUDED IN THE CONTRACT UNIT PRICE EACH FOR TRAFFIC CONTROL AND PROTECTION STANDARD 701316
 2. ALL TEMPORARY BRIDGE TRAFFIC SIGNALS FOR CONSTRUCTION WILL BE MEASURED AS 1 (ONE) UNIT.
 3. ALL PRIVATE ENTRANCES ARE TO REMAIN OPEN AT ALL TIMES.
 4. ALL TRAFFIC CONTROL ITEMS NOT SHOWN ON STAGE I & II PLAN VIEW SHALL BE PER REQUIREMENTS OF TRAFFIC CONTROL AND PROTECTION STANDARD 701316.

FILE NAME =	USER NAME = jaymedf	DESIGNED -	REVISED -	STATE OF ILLINOIS DEPARTMENT OF TRANSPORTATION	STAGE I & II TRAFFIC CONTROL SN 021-8028 (LOCATION #1)			F.A.P. RTE.	SECTION	COUNTY	TOTAL SHEETS	SHEET NO.
es:\pwork\pwork\jaymedf\d0318412\0570611-sht-staging.dgn	DRAWN - DFJ	REVISED -	749					..	DOUGLAS	17	11	
PLOT SCALE = 40x8.0000 1" / 16'	CHECKED -	REVISED -	** POSTING MITIGATION FY2013-1					CONTRACT NO. 70A11				
MODELNAME	DATE - 01/18/13	REVISED -	ILLINOIS FED. AID PROJECT									
				SCALE:	SHEET 01	OF 01	SHEETS	STA.	TO STA.			

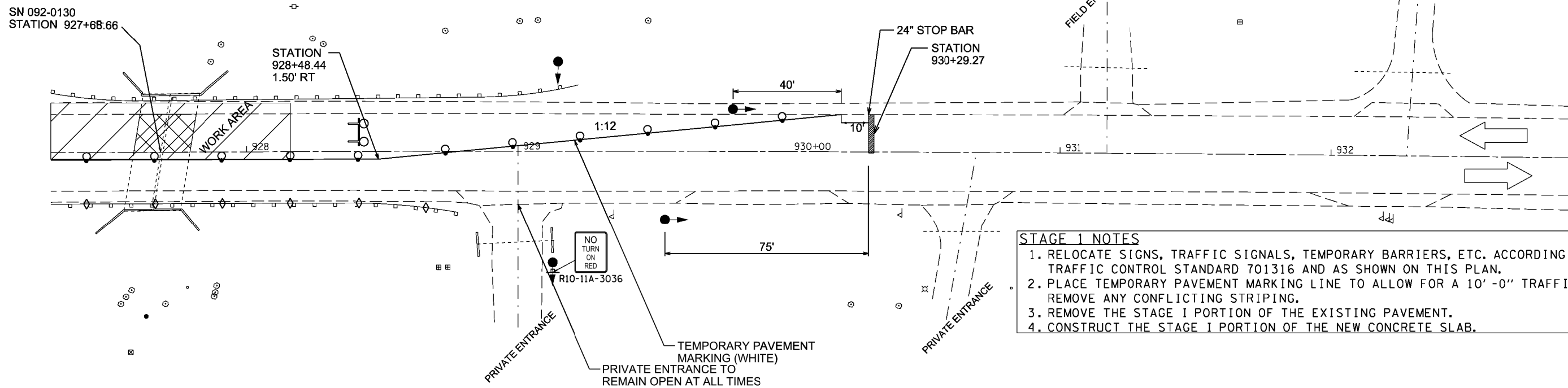
STAGE ONE

GENERAL NOTES FOR STAGE CONSTRUCTION:

1. ALL SIGNS, TRAFFIC CONTROL EQUIPMENT, AND TEMPORARY PAVEMENT MARKINGS SHALL BE IN ACCORDANCE WITH THE LATEST VERSION OF HIGHWAY STANDARD 701316 AND SHALL BE INCLUDED IN THE CONTRACT UNIT PRICE EACH FOR TRAFFIC CONTROL AND PROTECTION STANDARD 701316
2. ALL TEMPORARY BRIDGE TRAFFIC SIGNALS FOR CONSTRUCTION WILL BE MEASURED AS 1 (ONE) UNIT.
3. PLACE RCA IN ADVANCE OF SIGNALS AS DIRECTED BY ENGINEER.
4. ENTRANCE TO E 3785 NORTH ROAD IS TO REMAIN OPEN AT ALL TIMES.
5. EXISTING STOP SIGN AT ENTRANCE TO E 3785 NORTH ROAD IS TO BE COVERED
6. AN RCA WITH SIGNALS AND A SIGNAL AHEAD SIGN ARE TO BE PLACED ON E 3785 AS DIRECTED BY THE ENGINEER.
7. ALL PRIVATE ENTRANCES ARE TO REMAIN OPEN AT ALL TIMES.
8. ALL TRAFFIC CONTROL ITEMS NOT SHOWN ON STAGE I & II PLAN VIEW SHALL BE PER REQUIREMENTS OF TRAFFIC CONTROL AND PROTECTION STANDARD 701316.



SYMBOLS	
	WORK AREA
	SIGN
	TYPE III BARRICADE WITH FLASHING LIGHTS
	DRUM WITH STEADY BURNING BI-DIRECTIONAL LIGHT
	CRYSTAL BI-DIRECTIONAL PARAPET/GAURDRAIL MARKER
	TRAFFIC SIGNAL



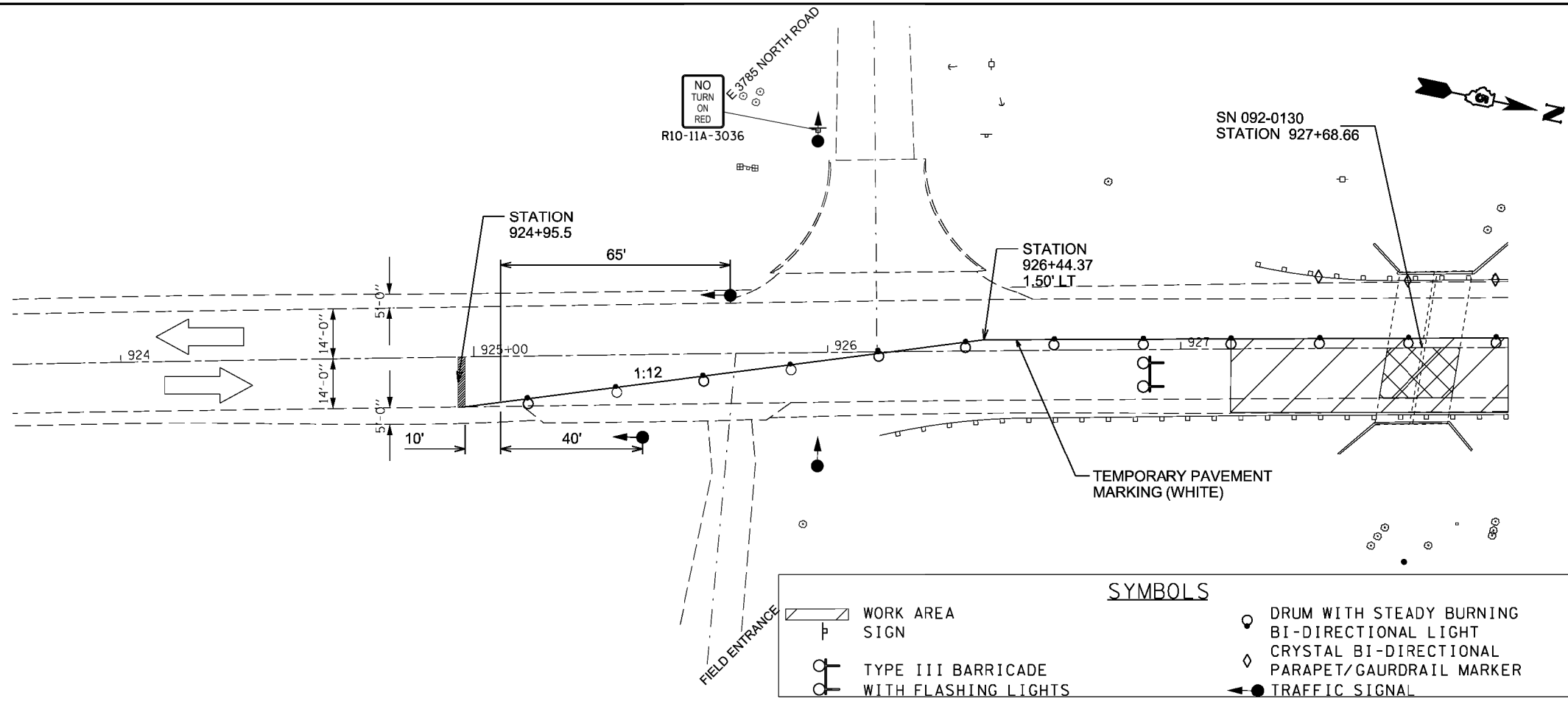
STAGE 1 NOTES	
1.	RELOCATE SIGNS, TRAFFIC SIGNALS, TEMPORARY BARRIERS, ETC. ACCORDING TO TRAFFIC CONTROL STANDARD 701316 AND AS SHOWN ON THIS PLAN.
2.	PLACE TEMPORARY PAVEMENT MARKING LINE TO ALLOW FOR A 10' -0" TRAFFIC LANE. REMOVE ANY CONFLICTING STRIPING.
3.	REMOVE THE STAGE I PORTION OF THE EXISTING PAVEMENT.
4.	CONSTRUCT THE STAGE I PORTION OF THE NEW CONCRETE SLAB.

FILE NAME =	USER NAME = jaymedf	DESIGNED -	REVISED -	STATE OF ILLINOIS DEPARTMENT OF TRANSPORTATION	STAGE I TRAFFIC CONTROL SN 092-0130 (LOCATION #2)			F.A.P. RTE.	SECTION	COUNTY	TOTAL SHEETS	SHEET NO.
e:\p\work\p\idot\jaymedf\d0318412\05700111-sht-staging.dgn	11-sht-staging.dgn	DRAWN - DFJ	REVISED -		322	..	VERMILION	17	12			
PLOT SCALE = 40x8.0000 1" / 16'		CHECKED -	REVISED -		** POSTING MITIGATION FY2013-1			CONTRACT NO. 70A11				
PLOT DATE = 1/28/2013		DATE - 1/18/13	REVISED -		ILLINOIS FED. AID PROJECT							
				SCALE:	SHEET 01	OF 02	SHEETS	STA.	TO STA.			

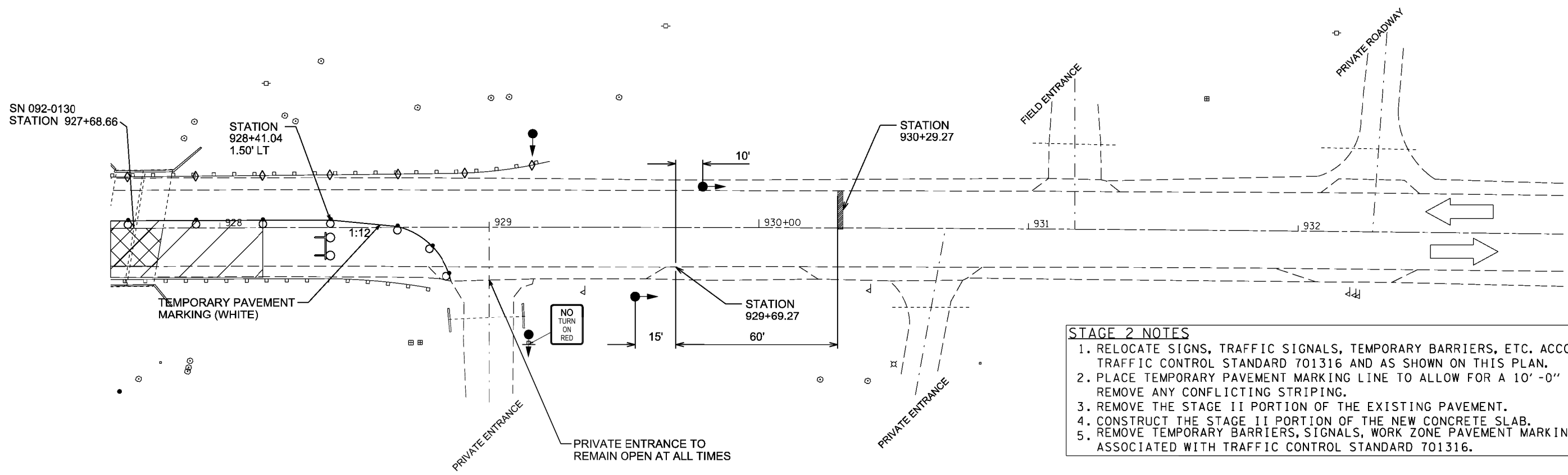
STAGE TWO

GENERAL NOTES FOR STAGE CONSTRUCTION:

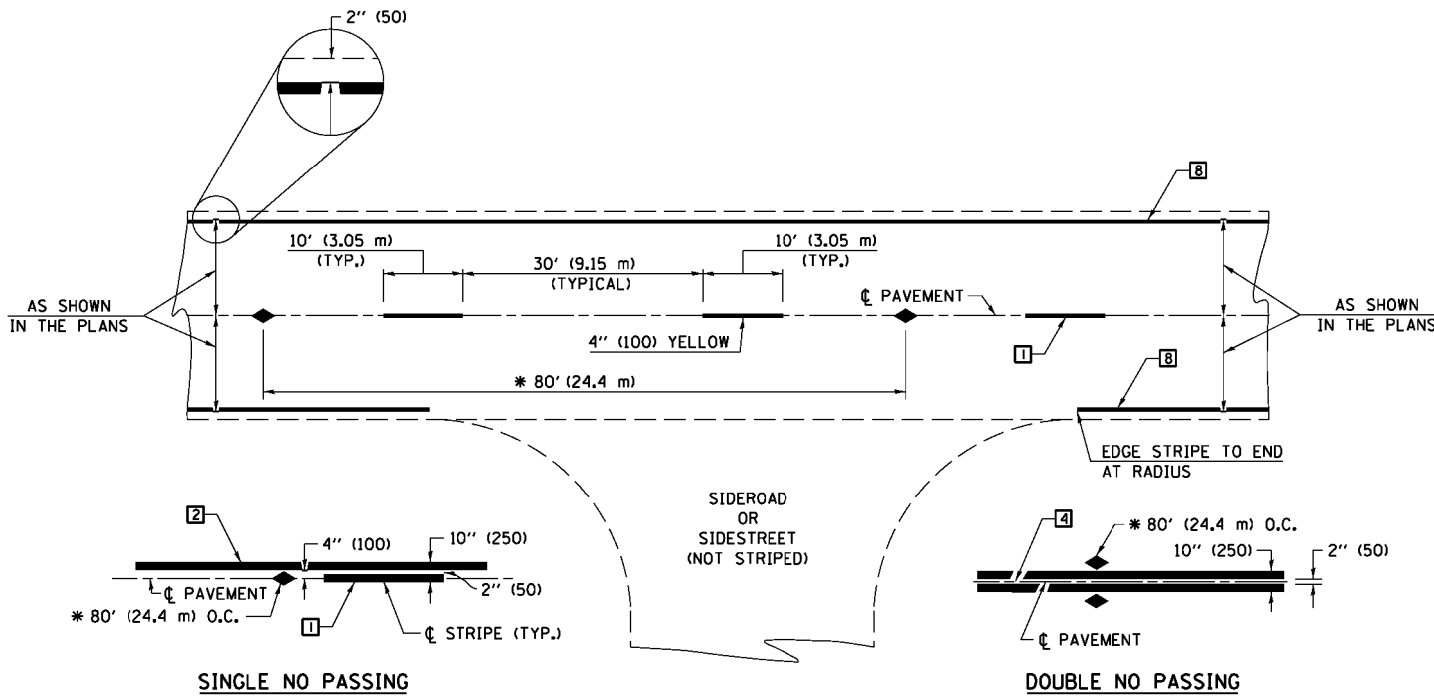
1. ALL SIGNS, TRAFFIC CONTROL EQUIPMENT, AND TEMPORARY PAVEMENT MARKINGS SHALL BE IN ACCORDANCE WITH THE LATEST VERSION OF HIGHWAY STANDARD 701316 AND SHALL BE INCLUDED IN THE CONTRACT UNIT PRICE EACH FOR TRAFFIC CONTROL AND PROTECTION STANDARD 701316
2. ALL TEMPORARY BRIDGE TRAFFIC SIGNALS FOR CONSTRUCTION WILL BE MEASURED AS 1 (ONE) UNIT.
3. PLACE RCA IN ADVANCE OF SIGNALS AS DIRECTED BY ENGINEER.
4. ENTRANCE TO E 3785 NORTH ROAD IS TO REMAIN OPEN AT ALL TIMES.
5. EXISTING STOP SIGN AT ENTRANCE TO E 3785 NORTH ROAD IS TO BE COVERED
6. AN RCA WITH SIGNALS AND A SIGNAL AHEAD SIGN ARE TO BE PLACED ON E 3785 AS DIRECTED BY THE ENGINEER.
7. ALL PRIVATE ENTRANCES ARE TO REMAIN OPEN AT ALL TIMES.
8. ALL TRAFFIC CONTROL ITEMS NOT SHOWN ON STAGE I & II PLAN VIEW SHALL BE PER REQUIREMENTS OF TRAFFIC CONTROL AND PROTECTION STANDARD 701316.



SYMBOLS	
	WORK AREA
	SIGN
	TYPE III BARRICADE WITH FLASHING LIGHTS
	DRUM WITH STEADY BURNING
	BI-DIRECTIONAL LIGHT
	CRYSTAL BI-DIRECTIONAL
	PARAPET/GAURDRAIL MARKER
	TRAFFIC SIGNAL



- ### STAGE 2 NOTES
1. RELOCATE SIGNS, TRAFFIC SIGNALS, TEMPORARY BARRIERS, ETC. ACCORDING TO TRAFFIC CONTROL STANDARD 701316 AND AS SHOWN ON THIS PLAN.
 2. PLACE TEMPORARY PAVEMENT MARKING LINE TO ALLOW FOR A 10' -0" TRAFFIC LANE. REMOVE ANY CONFLICTING STRIPING.
 3. REMOVE THE STAGE II PORTION OF THE EXISTING PAVEMENT.
 4. CONSTRUCT THE STAGE II PORTION OF THE NEW CONCRETE SLAB.
 5. REMOVE TEMPORARY BARRIERS, SIGNALS, WORK ZONE PAVEMENT MARKING, AND SIGNS ASSOCIATED WITH TRAFFIC CONTROL STANDARD 701316.



* REDUCE TO 40' (12.2 m) O.C. ON CURVES WITH POSTED OR ADVISORY SPEEDS OF 45 mph (70 km/h) OR LESS.

TWO LANE/TWO WAY

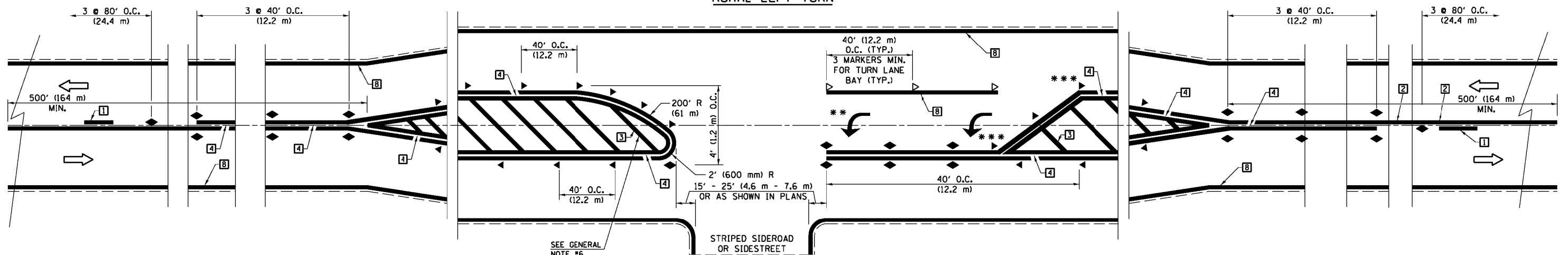
TYPICAL PAVEMENT MARKING LEGEND

- 1 4" (100) SKIP-DASH (YELLOW)
- 2 4" (100) SOLID (YELLOW)
- 3 12" (300) DIAGONAL (YELLOW)
- 4 4" (100) DOUBLE YELLOW (NARROW)
- 5 RESERVED
- 6 RESERVED
- 7 4" (100) SKIP-DASH (WHITE)
- 8 4" (100) SOLID (WHITE)
- 9 12" (300) DIAGONAL (WHITE)
- 10 6" (150) SOLID (WHITE)
- 11 24" (600) STOP BAR (WHITE)
- 12 8" (200) SOLID (WHITE)
- 13 4" (100) LANE LINE EXTENSIONS (WHITE)
- 14 4" (100) PARKING WHITE

TYPICAL PAVEMENT MARKERS LEGEND

- ◆ TWO-WAY AMBER MARKER
- ▶ ONE-WAY AMBER MARKER
- ▷ ONE-WAY CRYSTAL MARKER

RURAL LEFT TURN



*** REDUCE SPACING IF NECESSARY TO ASSURE MARKERS AT CORNER POINTS.

** TURN ARROWS SHALL BE PLACED AS SHOWN ON SHEET #2.

* ROUTES FAP 749 (IL 133) & FAP 332 (IL 1)
 ** POSTING MITIGATION FY2013-1
 *** DOUGLAS /VERMILION

Note: All dimensions are in INCHES (millimeters) unless otherwise shown.

DISTRICT 5 DETAIL NO. 7800AAAA

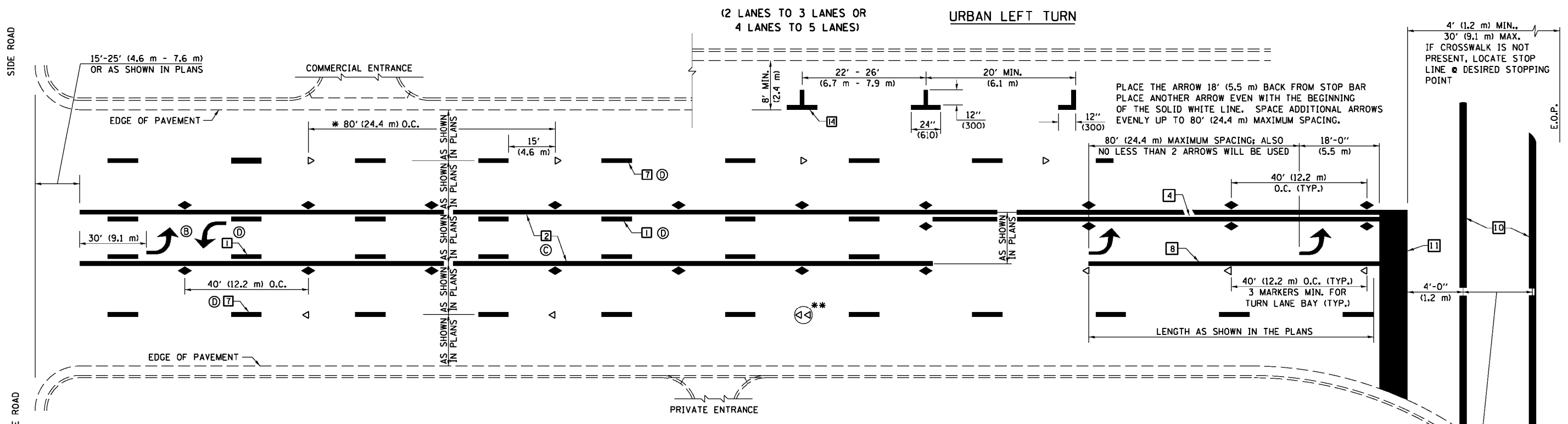
FILE NAME =	USER NAME = jaymedf	DESIGNED -	REVISED - 11/06
ci:\pwork\pwork\jaymedf\d0318412\0570411-sht-details.dgn		DRAWN -	REVISED - 09/2009 - KJT
		CHECKED -	REVISED -
		DATE -	REVISED -

**STATE OF ILLINOIS
DEPARTMENT OF TRANSPORTATION**

**PAVEMENT MARKING AND MARKERS
(RURAL & URBAN APPLICATIONS)**

SCALE: SHEET NO. 1 OF 4 SHEETS STA. TO STA.

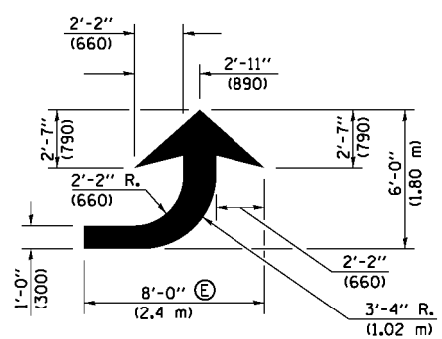
F.A. RTE.	SECTION	COUNTY	TOTAL SHEETS	SHEET NO.
*	**	***	17	14
CONTRACT NO. 70A11				
FED. ROAD DIST. NO. ILLINOIS FED. AID PROJECT				



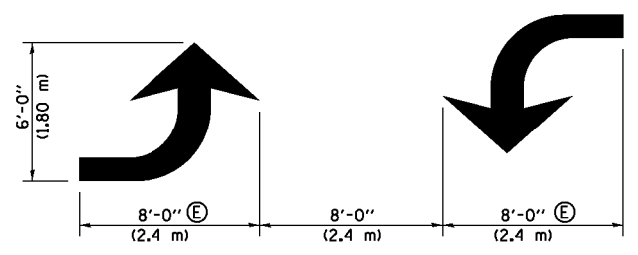
* REDUCE TO 40 FEET (12.2 METERS) ON CENTER ON CURVES WHERE ADVISORY SPEEDS ARE 10 MPH (15 km/h) LOWER THAN POSTED SPEEDS.

** DOUBLE LANE LINE MARKERS SHALL BE SPECIFIED AND SPACED AS SHOWN IN HIGHWAY STANDARD 781001 FOR MULTI-LANE DIVIDED AND UNDIVIDED HIGHWAYS.

- GENERAL NOTES:**
- ⓑ TURN ARROW PAIRS SHALL BE PLACED AT 250' (75 m) INTERVALS AND SHALL BE EVENLY SPACED BETWEEN BOTH ENDS OF THE BIDIRECTIONAL LEFT TURN LANE.
 - ⓒ THE SOLID YELLOW PAVEMENT MARKINGS [2] SHOULD GENERALLY START OR END NEAR THE RADIUS POINT OF EACH STREET RETURN EXCEPT WHERE ONE OR BOTH ENDS WOULD INCLUDE STOP BARS.
 - ⓓ THE SKIP-DASH PAVEMENT MARKINGS [1] OR [7] SHOULD BE CENTERED BETWEEN BOTH ENDS OF EACH CITY BLOCK AND SHALL BE PLACED SO THEY LINE UP ACROSS FROM EACH OTHER. SEE EXAMPLE ON SHEET 2 OF 3.
 - ⓔ USE LARGE ARROW SIZE FOR BOTH RURAL AND URBAN LOCATIONS. (SEE LAST PAGE OF SECTION 780x FOR SYMBOLS TABLE)

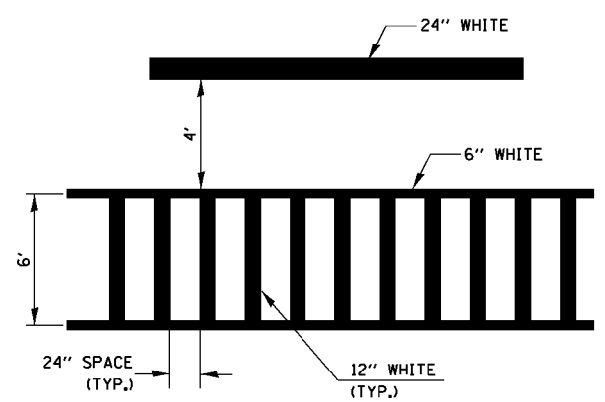


LEFT ARROW
 REVERSE FOR RIGHT ARROW
 AREA = 15.6 SQ. FT. (1.47 m²)
 (WHITE)

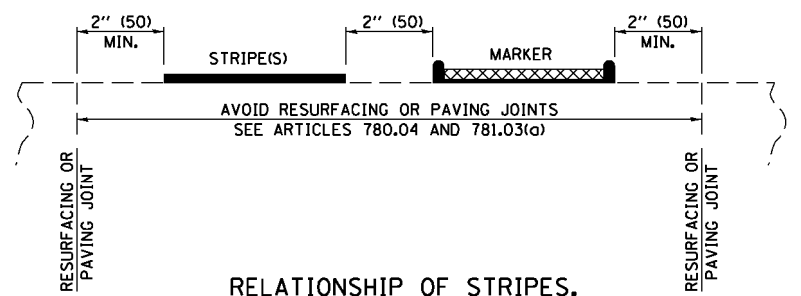


TYPICAL DOUBLE TURN ARROWS (WHITE)

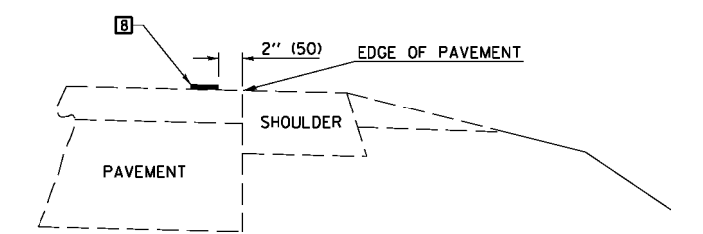
BLOOMINGTON-NORMAL CITY LIMITS ONLY



TYPICAL SPACING FOR CROSSWALKS & STOP BARS



RELATIONSHIP OF STRIPES, MARKERS AND JOINTS



RELATIONSHIP OF EDGE LINE TO EDGE OF PAVEMENT
 (SAFETY SHOULDER OR PAVED SURFACE)
 SEE ARTICLE 780.04

CROSSWALK WIDTH 6'-0" (1.8 m) OR AS SHOWN IN THE PLANS

Note: All dimensions are in INCHES (millimeters) unless otherwise shown.

* ROUTES FAP 749 (IL 133) & FAP 332 (IL 1)
 ** POSTING MITIGATION FY2013-1
 *** DOUGLAS /VERMILION

DISTRICT 5 DETAIL NO. 7800AAA

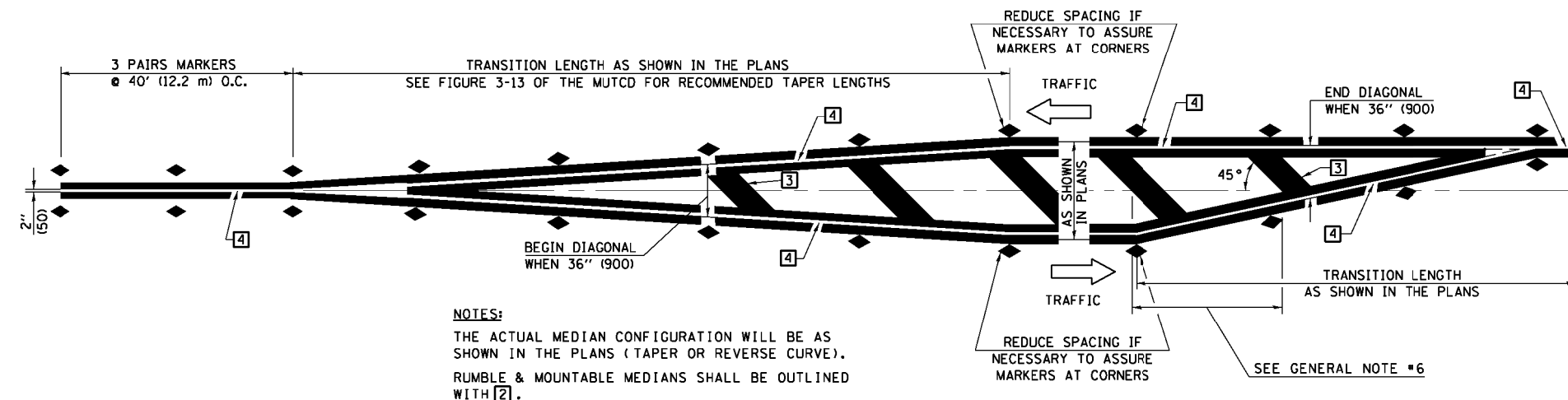
FILE NAME -	USER NAME - jaymedf	DESIGNED -	REVISED - 11/06
ci:\pwork\pwork\jaymedf\d0318412\0570411-sht-details.dgn		DRAWN -	REVISED - 09/2009 - KJT
		CHECKED -	REVISED -
		DATE -	REVISED -

**STATE OF ILLINOIS
 DEPARTMENT OF TRANSPORTATION**

**PAVEMENT MARKING AND MARKERS
 (RURAL & URBAN APPLICATIONS)**

SCALE: SHEET NO. 2 OF 4 SHEETS STA. TO STA.

F.A. RTE.	SECTION	COUNTY	TOTAL SHEETS	SHEET NO.
*	**	***	17	15
CONTRACT NO. 70A11				
FED. ROAD DIST. NO. ILLINOIS FED. AID PROJECT				

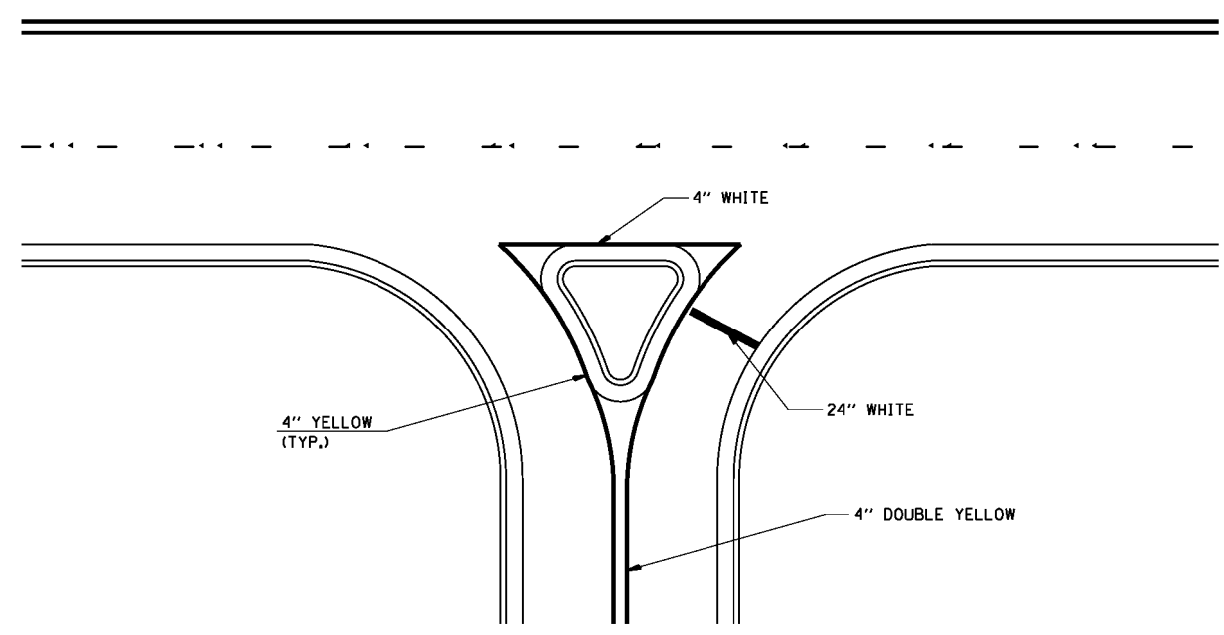


NOTES:
 THE ACTUAL MEDIAN CONFIGURATION WILL BE AS SHOWN IN THE PLANS (TAPER OR REVERSE CURVE).
 RUMBLE & MOUNTABLE MEDIANS SHALL BE OUTLINED WITH [2].

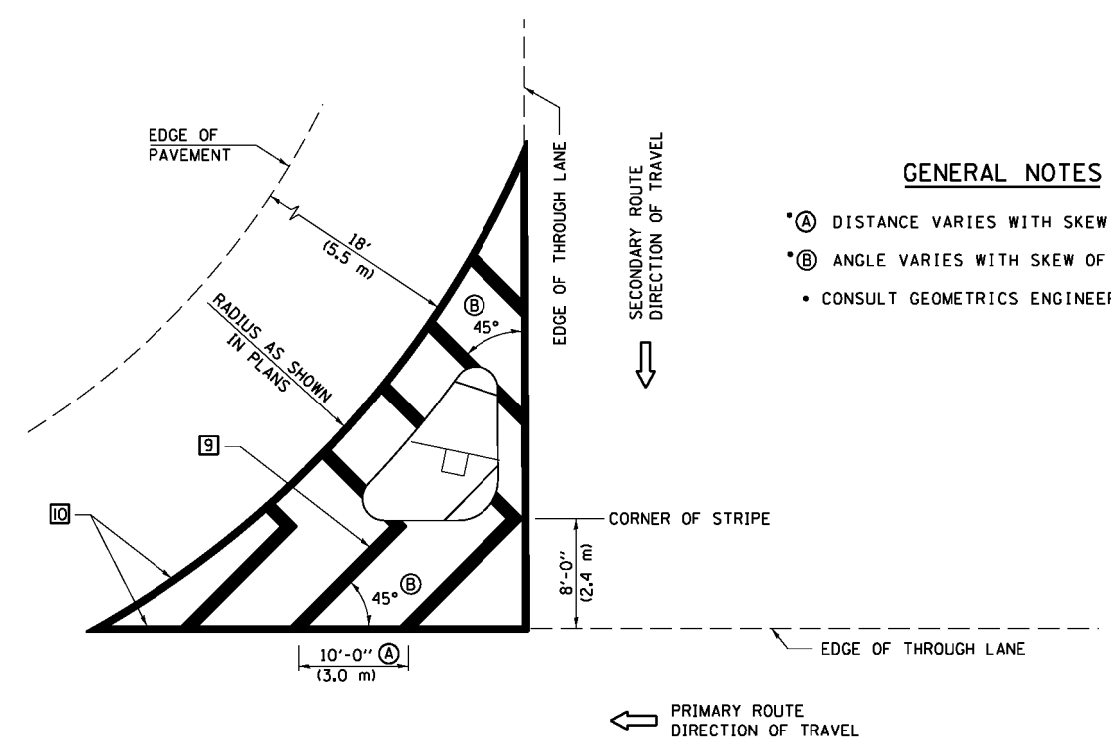
TYPICAL MEDIAN TRANSITIONS

GENERAL NOTES

1. WHEN MEDIANS ARE PRESENT, PAVEMENT MARKINGS ARE TO BE PLACED ADJACENT TO MEDIANS.
2. SOME OF THE INFORMATION INCLUDED WITH THIS DETAIL MAY NOT BE APPLICABLE TO THIS IMPROVEMENT.
3. PAVEMENT MARKINGS ARE TO BE EXTENDED THROUGH OMISSIONS WHEN APPLICABLE.
4. A STRIPING KEY IS AVAILABLE ELSEWHERE AND SHALL BE SHOWN WHERE THE QUANTITIES ARE LISTED.
5. FINAL PAVEMENT MARKINGS SHALL BE IN PLACE PRIOR TO PLACING ANY RAISED REFLECTIVE PAVEMENT MARKERS.
6. THE FOLLOWING CRITERIA SHALL BE USED FOR SELECTING THE DIAGONAL PAVEMENT MARKING SPACING,
 < 30 MPH USE 15' (< 50 km/h USE 4.5 m)
 30-45 MPH USE 20' (50-75 km/h USE 6.0 m)
 > 45 MPH USE 30' (> 75 km/h USE 9.0 m)



RIGHT IN - RIGHT OUT ACCESS



GENERAL NOTES

- * (A) DISTANCE VARIES WITH SKEW OF INTERSECTION.
- * (B) ANGLE VARIES WITH SKEW OF INTERSECTION.
- CONSULT GEOMETRICS ENGINEER

ISLAND

Note: All dimensions are in INCHES (millimeters) unless otherwise shown.

* ROUTES FAP 749 (IL 133) & FAP 332 (IL 1)
 ** POSTING MITIGATION FY2013-1
 *** DOUGLAS /VERMILION

DISTRICT 5 DETAIL NO. 7800AAAA

FILE NAME =	USER NAME = jeymedf	DESIGNED -	REVISED - 11/06
ci:\pwork\pwork\jeymedf\d0318412\0570411-sht-details.dgn		DRAWN -	REVISED - 09/2009 - KJT
	PLOT SCALE = 40:3.0000 "/td> <td>CHECKED -</td> <td>REVISED -</td>	CHECKED -	REVISED -
	PLOT DATE = 1/22/2013	DATE -	REVISED -

**STATE OF ILLINOIS
 DEPARTMENT OF TRANSPORTATION**

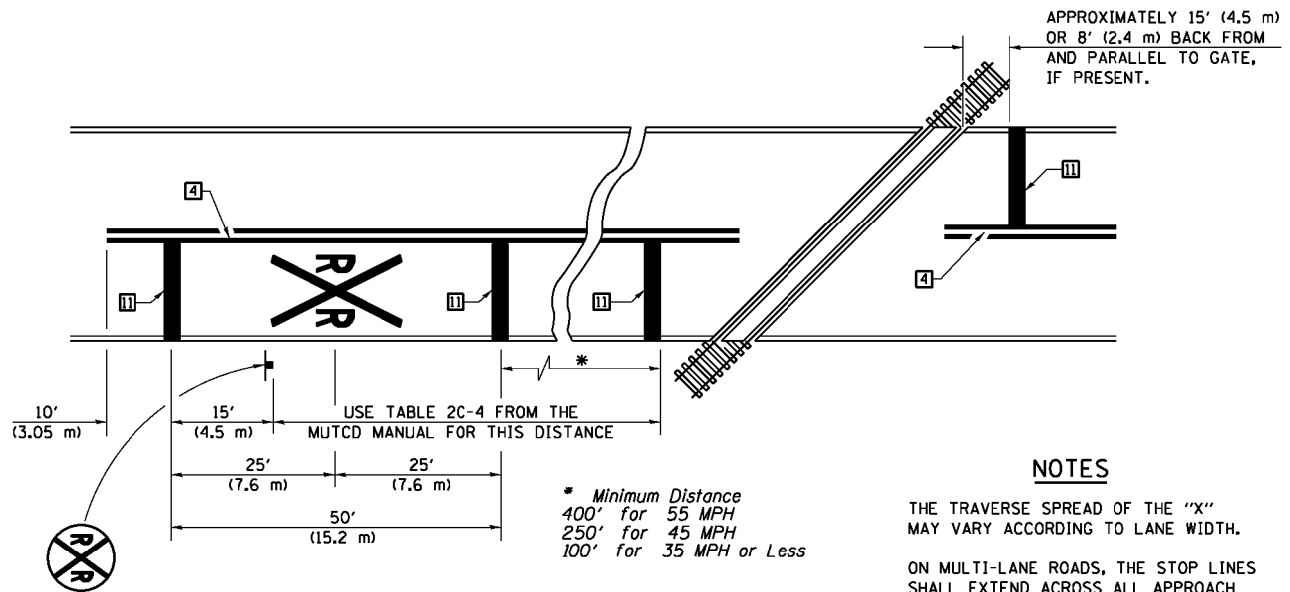
**PAVEMENT MARKING AND MARKERS
 (RURAL & URBAN APPLICATIONS)**

F.A. RTE.	SECTION	COUNTY	TOTAL SHEETS	SHEET NO.
*	**	***	17	16
CONTRACT NO. 70A11				
FED. ROAD DIST. NO. ILLINOIS FED. AID PROJECT				

SCALE: SHEET NO. 3 OF 4 SHEETS STA. TO STA.

RAILROAD CROSSING WITH INTERCONNECT ONLY

RAILROAD CROSSING WITH INTERCONNECT AND PRE-SIGNALS



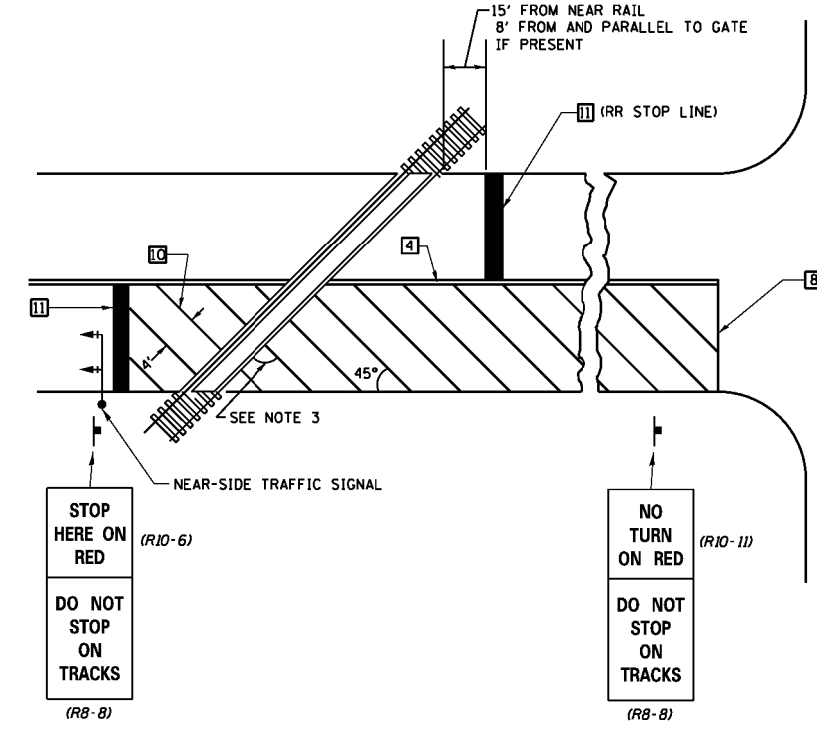
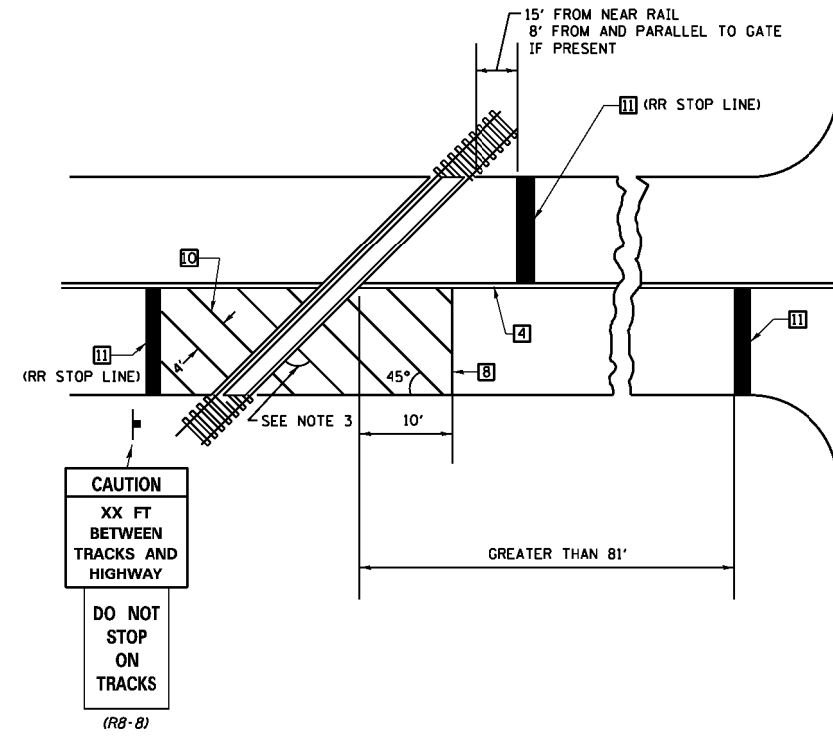
PAVEMENT MARKINGS AT RAILROAD-HIGHWAY GRADE CROSSING

NOTES

THE TRAVERSE SPREAD OF THE "X" MAY VARY ACCORDING TO LANE WIDTH.

ON MULTI-LANE ROADS, THE STOP LINES SHALL EXTEND ACROSS ALL APPROACH LANES AND SEPARATE R X R SYMBOLS SHALL BE PLACED ADJACENT TO EACH OTHER IN EACH LANE.

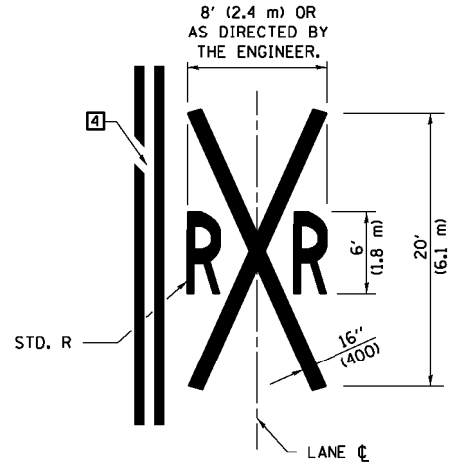
WHEN THE PAVEMENT MARKING SYMBOL IS USED, A PORTION OF THE SYMBOL SHOULD BE LOCATED DIRECTLY ADJACENT TO THE ADVANCE WARNING SIGN (W10-1) AS PLACED BY TABLE II-1, CONDITION B OF THE MUTCD.



SUPPLEMENTAL PAVEMENT MARKING TREATMENT FOR RAILROAD-HIGHWAY GRADE CROSSING

GENERAL NOTES

- SUPPLEMENTAL PAVEMENT MARKINGS TO BE INSTALLED ONLY ON APPROACHES TO INTERSECTIONS CONTROLLED BY TRAFFIC SIGNALS WHICH ARE INTERCONNECTED WITH THE RAILROAD WARNING SIGNALS.
- EXTEND PAVEMENT MARKINGS TO THE INTERSECTION ONLY WHERE NEAR-SIDE TRAFFIC SIGNALS ARE USED.
- WHERE THE ANGLE BETWEEN THE DIAGONAL PAVEMENT MARKINGS AND THE TRACK WOULD BE LESS THAN 20°, THE PAVEMENT MARKINGS SHOULD BE PLACED IN THE OPPOSITE DIRECTION FROM THAT SHOWN.



Note: All dimensions are in INCHES (millimeters) unless otherwise shown.

* ROUTES FAP 749 (IL 133) & FAP 332 (IL 1)
** POSTING MITIGATION FY2013-1
*** DOUGLAS /VERMILION

DISTRICT 5 DETAIL NO. 7800AAA

FILE NAME =	USER NAME = jaymedf	DESIGNED -	REVISED - 11/06
ci:\pwork\pwork\jaymedf\d0318412\0570411-sht-details.dgn		DRAWN -	REVISED - 09/2009 - KJT
		CHECKED -	REVISED -
		DATE -	REVISED -

STATE OF ILLINOIS DEPARTMENT OF TRANSPORTATION

PAVEMENT MARKING AND MARKERS (RURAL & URBAN APPLICATIONS)

SCALE: SHEET NO. 4 OF 4 SHEETS STA. TO STA.

F.A. RTE.	SECTION	COUNTY	TOTAL SHEETS	SHEET NO.
*	**	***	17	17
CONTRACT NO. 70A11				
FED. ROAD DIST. NO. ILLINOIS FED. AID PROJECT				