

F.A.P. RTE.	SECTION	COUNTY	TOTAL SHEETS	SHEET NO.
315	(H)RS-2, (124)RS-3, (116)RS	MASON	62	1
ILLINOIS			CONTRACT NO. 72E03	

# INDEX OF SHEETS

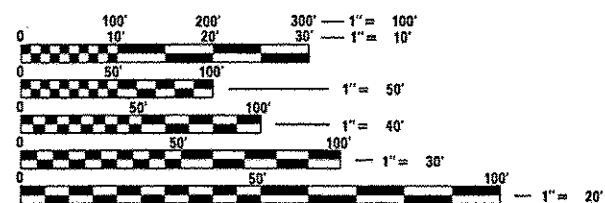
- 1 COVER SHEET
- 2 GENERAL NOTES
- 3-7 SUMMARY OF QUANTITIES
- 8-22 SCHEDULE OF QUANTITIES
- 23-30 TYPICAL CROSS SECTIONS
- 31-48 PLAN SHEETS
- 49-55 PAVEMENT MARKING SHEETS
- 56, 57 BUTT-JOINT DETAILS
- 58-60 ENTRANCE /SIDEROAD DETAILS
- 61, 62 GUARDRAIL DETAILS

# STANDARDS

- 000001-06 630301-06 701501-06
- 001006 631011-09 701801-05
- 406201-01 635006-03 701901-02
- 424001-07 635011-02 720001-01
- 442001-04 642006 720006-03
- 442101-07 701006-04 720011-01
- 442201-03 701201-04 728001-01
- 482006-03 701301-04 729001-01
- 606301-04 701306-03 731001-01
- 630001-10 701311-03 780001-03
- 630106-01 701326-04 781001-03

**HIGHWAY CLASSIFICATION:**  
 US 136 - OTHER PRINCIPAL ARTERIAL

ADT = 2,400 (2011) 2,928 (2031)  
 SU = 21.4%  
 MU = 11.2%



FULL SIZE PLANS HAVE BEEN PREPARED USING STANDARD ENGINEERING SCALES. REDUCED SIZED PLANS WILL NOT CONFORM TO STANDARD SCALES. IN MAKING MEASUREMENTS ON REDUCED PLANS, THE ABOVE SCALES MAY BE USED.

J.U.L.I.E.  
 JOINT UTILITY LOCATION INFORMATION FOR EXCAVATION  
 1-800-892-0123  
 OR 811

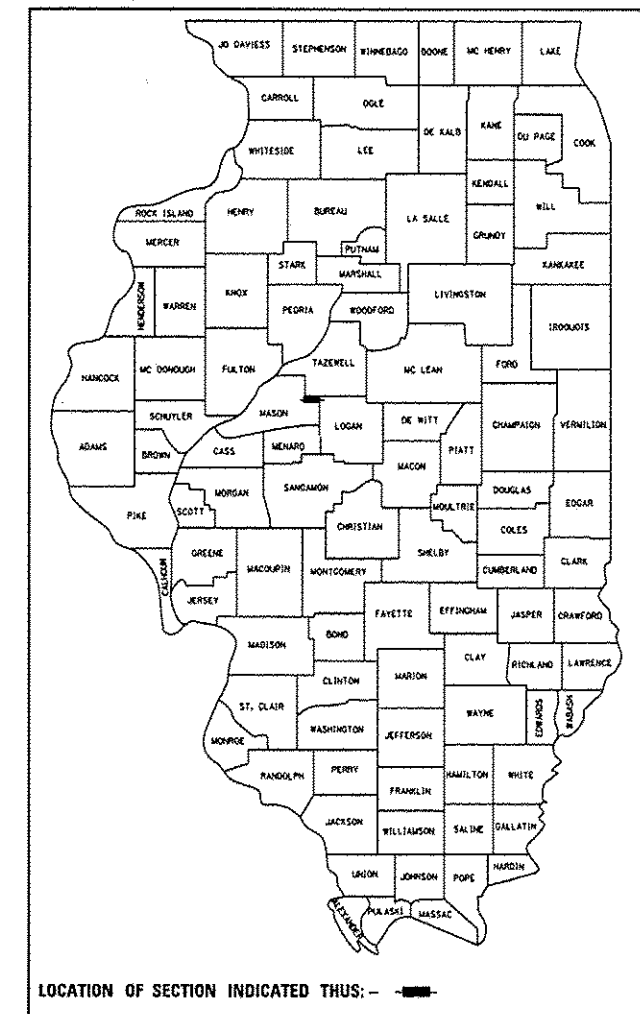
SENIOR TEAM ENGINEER: VINCE MADONIA - (217)785-9046  
 TEAM MANAGER: TIM SLAGLE - (217)785-5538  
 CONTRACT NO. 72E03

# STATE OF ILLINOIS DEPARTMENT OF TRANSPORTATION DIVISION OF HIGHWAYS

# PROPOSED HIGHWAY PLANS

FAP ROUTE 315 (US 136)  
 SECTION (H)RS-2, (124)RS-3, (116)RS  
 RESURFACING (3P), SHOULDER RECONSTRUCTION  
 MASON COUNTY  
 C-96-023-11  
 PROJECT NO. ACNHF-0315(063)

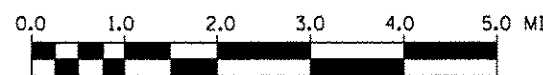
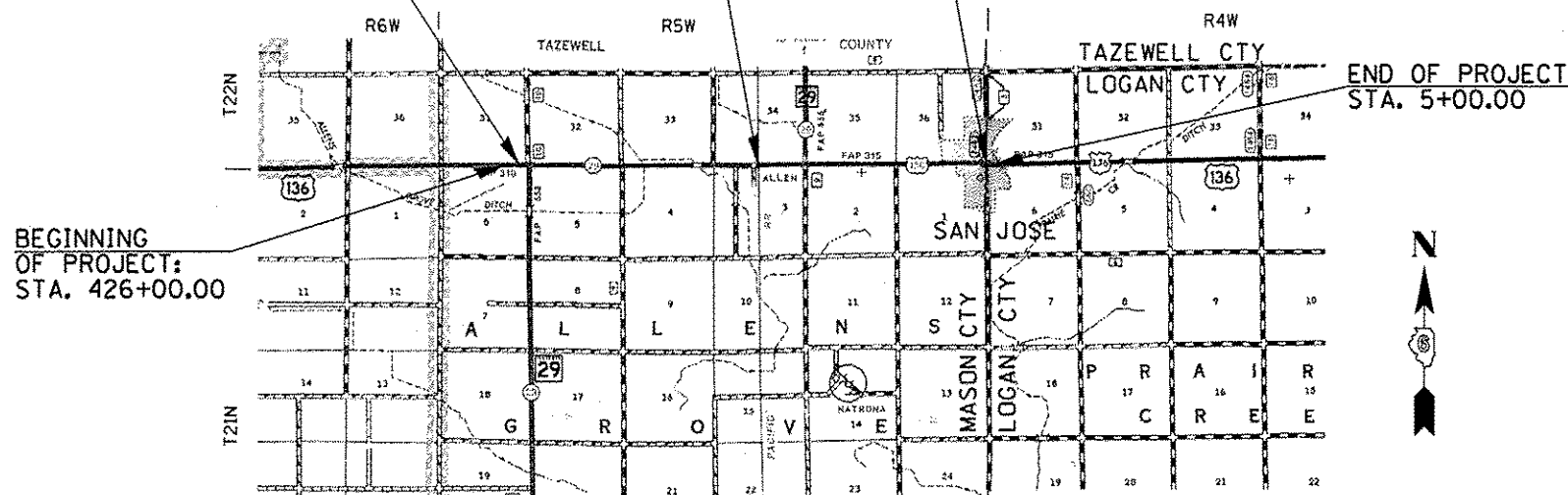
D-96-023-11



STATION EQUATION:  
 STA 430+69.17 (BK)  
 STA 0+00.00 (AHD)

RAILROAD OMISSION:  
 STA. 134+42.00 TO  
 STA. 134+52.00

STATION EQUATION:  
 STA 261+63.59 (BK)  
 STA. 0+00.00 (AHD)



SCALE (MILES)

## LOCATION MAP

GROSS LENGTH = 27,244.80 FT. = 5.16 MILE  
 NET LENGTH = 27,091.35 FT. = 5.13 MILE

STATE OF ILLINOIS  
 DEPARTMENT OF TRANSPORTATION  
 DIVISION OF HIGHWAYS

SUBMITTED December 14 2012  
Rge 2 Smith  
 DEPUTY DIRECTOR OF HIGHWAYS, REGION ENGINEER

March 22 2013  
John D. Baranzelle P.E. bc  
 ENGINEER OF DESIGN AND ENVIRONMENT

March 22 2013  
Omar Osman P.E. bc  
 DIRECTOR OF HIGHWAYS, CHIEF ENGINEER

PRINTED BY THE AUTHORITY  
 OF THE STATE OF ILLINOIS