

F.A. RTE.	SECTION	COUNTY	TOTAL SHEETS	SHEET NO.
*	*	**	39	1
ILLINOIS			CONTRACT NO. 72F05	

* 06 BEACON & SIGNING 2013 ** VARIOUS

STATE OF ILLINOIS
DEPARTMENT OF TRANSPORTATION
DIVISION OF HIGHWAYS

**PROPOSED
HIGHWAY PLANS**

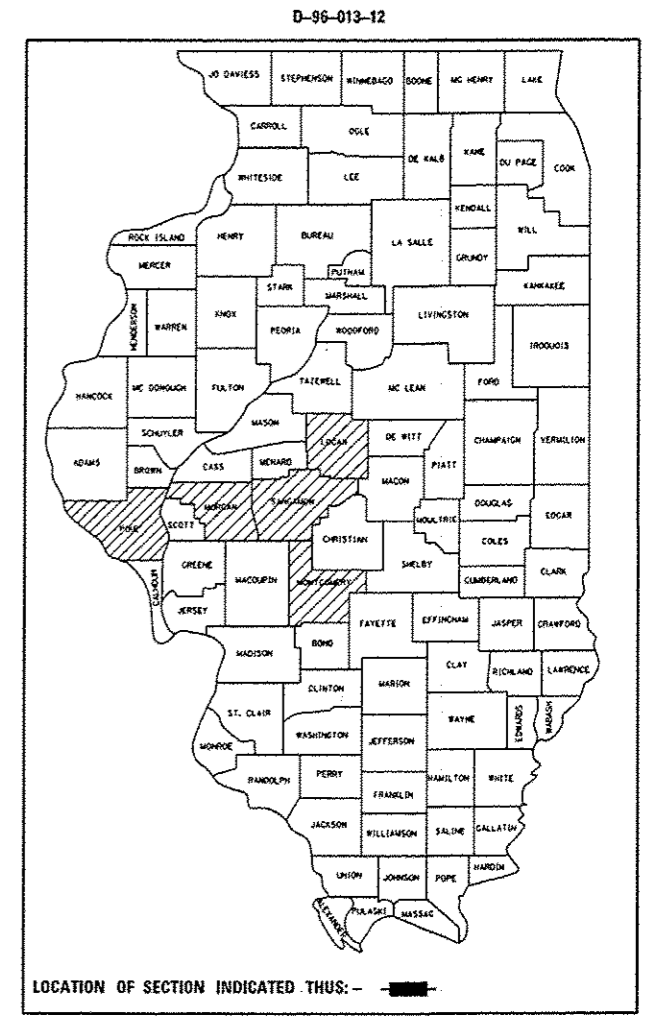
VARIOUS ROUTES
D6 BEACON & SIGNING 2013
PROJECT HSIP-000S(918)
VARIOUS COUNTIES

C-96-013-12

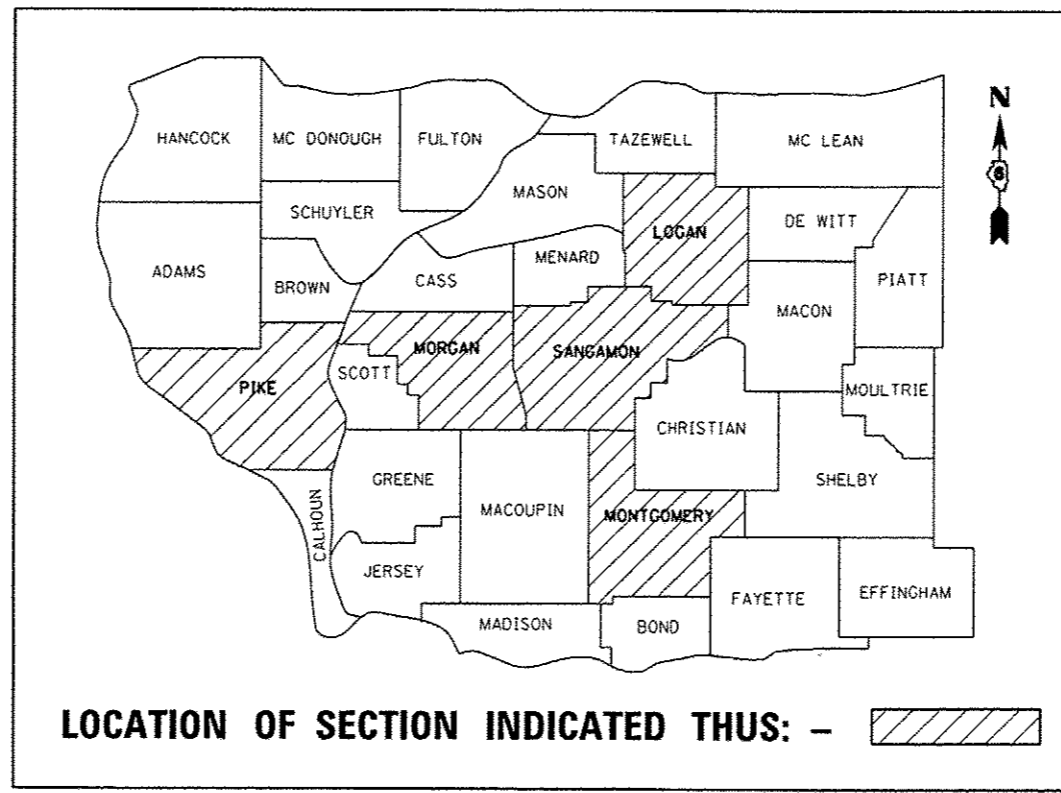
FOR INDEX OF SHEETS, SEE SHEET NO. 2

HIGHWAY STANDARDS

- 701001-02
- 701006-04
- 701101-03
- 701106-02
- 701421-05
- 701456-02
- 701901-02
- 720001-01
- 720006-03
- 728001-01

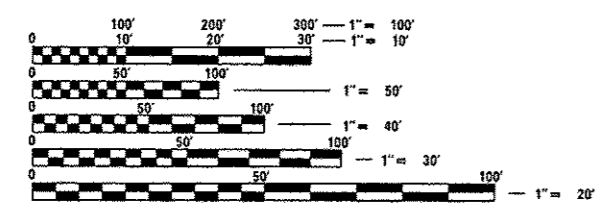


LOCATION OF SECTION INDICATED THUS: - [shaded box]



LOCATION OF SECTION INDICATED THUS: - [shaded box]

LOCATION MAP



FULL SIZE PLANS HAVE BEEN PREPARED USING STANDARD ENGINEERING SCALES. REDUCED SIZED PLANS WILL NOT CONFORM TO STANDARD SCALES. IN MAKING MEASUREMENTS ON REDUCED PLANS, THE ABOVE SCALES MAY BE USED.

J.U.L.I.E.
JOINT UTILITY LOCATION INFORMATION FOR EXCAVATION
1-800-892-0123
OR 811

SENIOR TEAM ENGINEER: VINCE MADONIA 217-785-9046
TEAM ENGINEER: JAY EDWARDS 217-785-5321

CONTRACT NO. 72F05

STATE OF ILLINOIS
DEPARTMENT OF TRANSPORTATION
DIVISION OF HIGHWAYS

SUBMITTED February 1, 2013
Raymond J. Driskell
DEPUTY DIRECTOR OF HIGHWAYS, REGION ENGINEER

March 22, 2013
John D. Baranzello, P.E.
ENGINEER OF DESIGN AND ENVIRONMENT

March 22, 2013
Omni Osman, P.E.
DIRECTOR OF HIGHWAYS, CHIEF ENGINEER

PRINTED BY THE AUTHORITY
OF THE STATE OF ILLINOIS