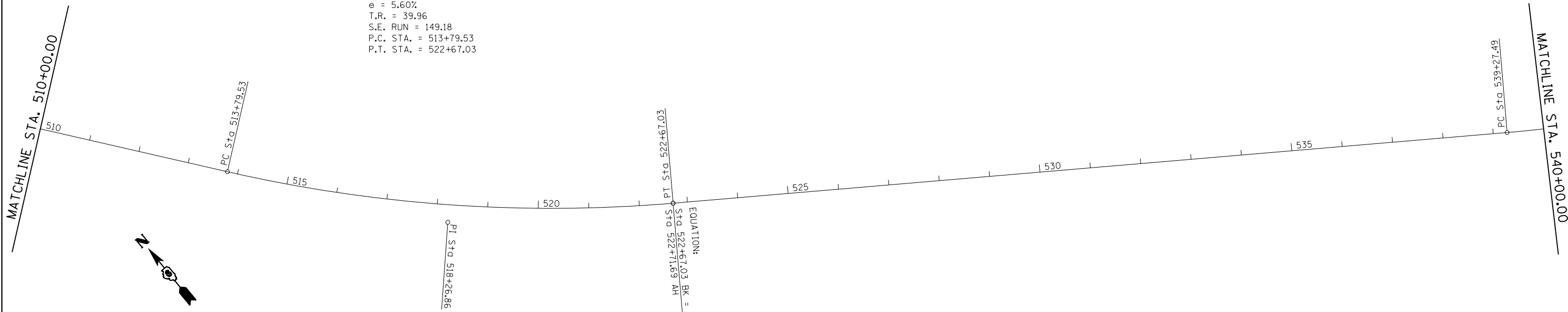
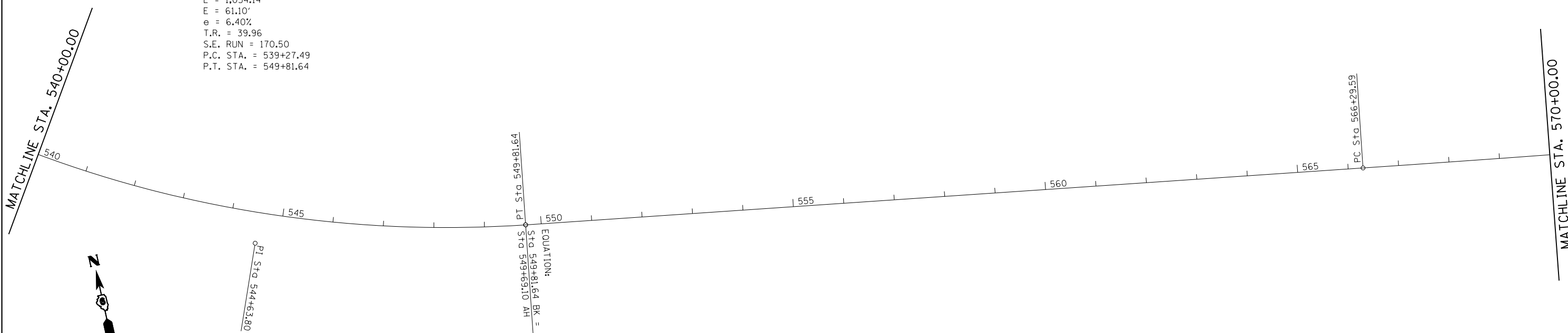


EXIST. CURVE 701
 PI STA. = 518+26.86
 $\Delta = 17^\circ 45' 00''$ (LT)
 D = $2^\circ 00' 00''$
 R = 2,864.79'
 T = 447.33'
 L = 887.50'
 E = 34.71'
 e = 5.60%
 T.R. = 39.96
 S.E. RUN = 149.18
 P.C. STA. = 513+79.53
 P.T. STA. = 522+67.03



EXIST. CURVE 702
 PI STA. = 544+63.80
 $\Delta = 26^\circ 00' 00''$ (LT)
 D = $2^\circ 27' 59''$
 R = 2,323.00'
 T = 536.31'
 L = 1,054.14'
 E = 61.10'
 e = 6.40%
 T.R. = 39.96
 S.E. RUN = 170.50
 P.C. STA. = 539+27.49
 P.T. STA. = 549+81.64



FILE NAME =	USER NAME = sparksgw	DESIGNED - EK	REVISED -
c:\pw\work\p\idot\sparksgw\10313888\0672\F69-SHT_PLN1.dgn		DRAWN - EK	REVISED -
Default	PLOT SCALE = 200.0000' / in.	CHECKED - JM	REVISED -
	PLOT DATE = Oct-17-2012 12:27:36PM	DATE -	REVISED -

STATE OF ILLINOIS
 DEPARTMENT OF TRANSPORTATION

ALIGNMENT DIAGRAM PLAN SHEETS

SCALE: 100 SHEET 2 OF 11 SHEETS STA. 510+00.00 TO STA. 570+00.00

F.A.P. RTE.	SECTION	COUNTY	TOTAL SHEETS	SHEET NO.
67	.	CASS	47	26
CONTRACT NO. 72F69			ILLINOIS FED. AID PROJECT	