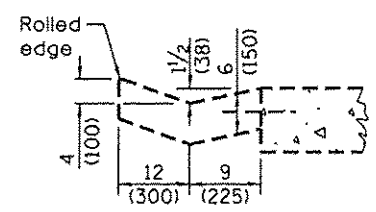
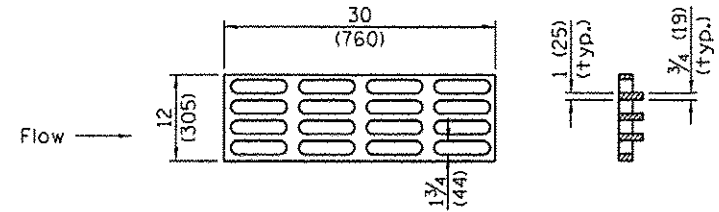
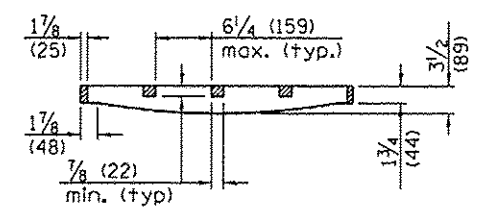
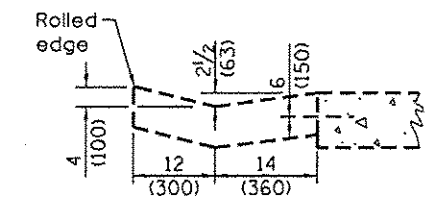


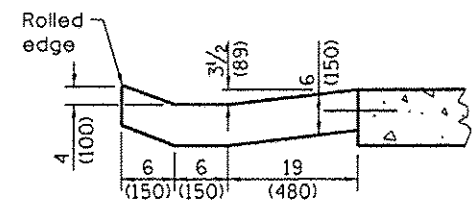
**PLAN - DOUBLE OUTLET**



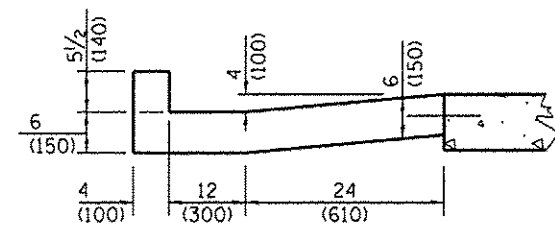
**SECTION A-A  
EXISTING**



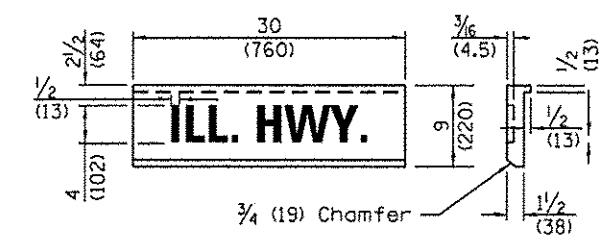
**SECTION B-B  
EXISTING**



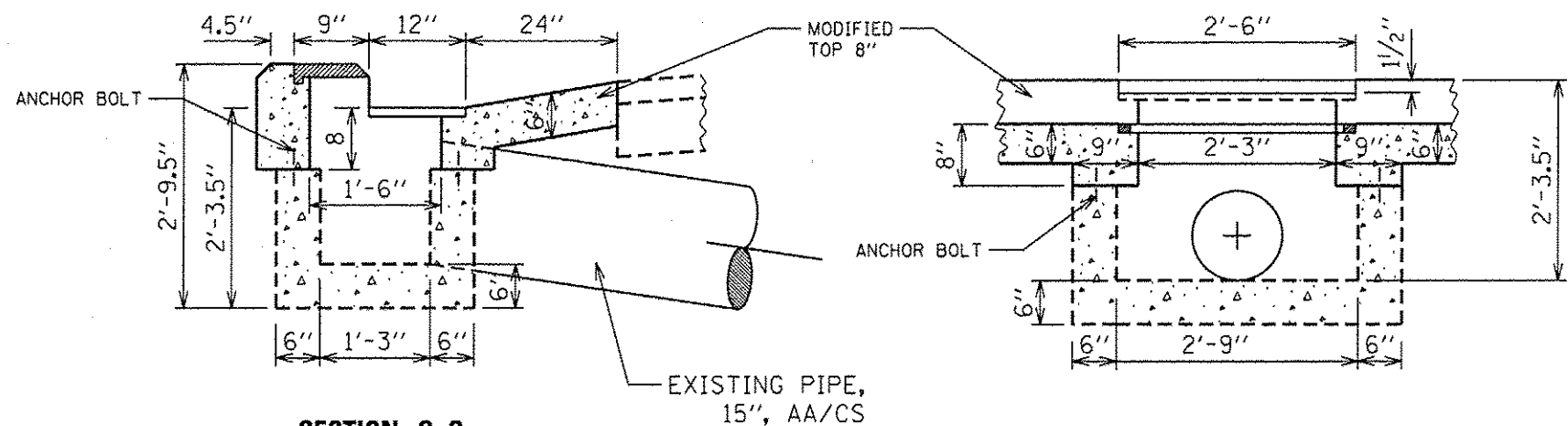
**SECTION C-C  
PROPOSED**



**SECTION D-D  
PROPOSED**



**GRATE AND COVER TYPE 2B**



**SECTION G-G  
PROPOSED**

**SECTION H-H  
PROPOSED**

**GENERAL NOTES**

If the average grade of pavement for the distance A-E exceeds 2 percent, this distance shall be increased 6 ft. (1.8 m) for each 1 percent increase in grade.

The gutter outlet shall be tied to the pavement in accordance with details for longitudinal construction joint shown on Standard 420001.

All dimensions are in inches (millimeters) unless otherwise shown.

**NOTE:**

CONSTRUCT MODIFIED STANDARD 606211-03 AT FOLLOWING STATIONS:

697+89	LT.	939+75	LT.	983+25	LT.
706+50	LT.	943+75	LT.	994+50	LT.
716+25	LT.	968+88	LT.	1038+10	LT.
763+50	LT.	978+50	LT.	1094+50	LT.

**QUANTITIES**

Material	Single	Double
Concrete - cu. yd. (m <sup>3</sup> )	1.62 (1.24)	2.18 (1.67)
Cast Iron Grate - Ea.	1	1
Cast Iron Cover - Ea.	1	1
Pipe Drain - Dia. in. (mm)	12 (300)	15 (375)