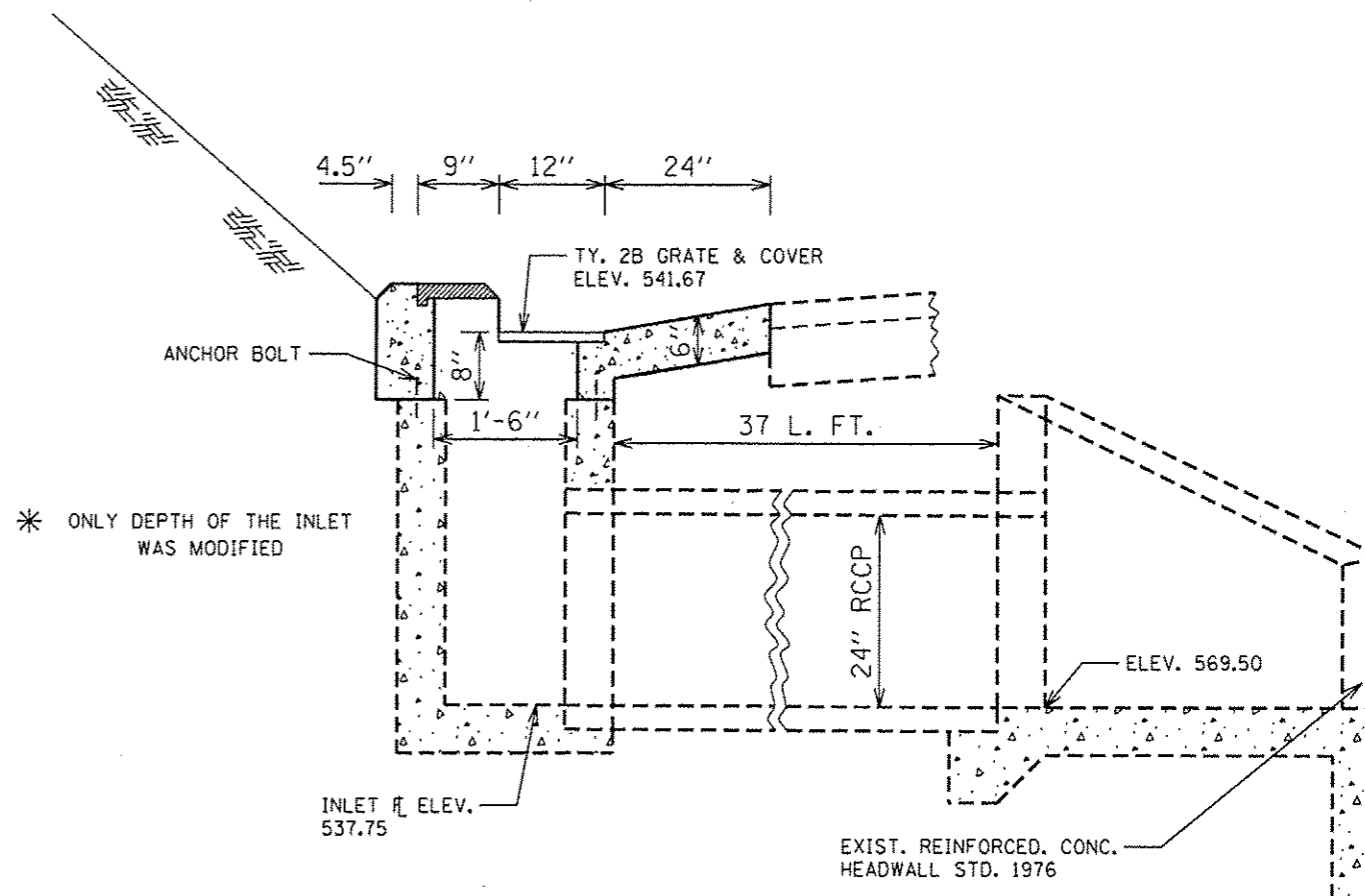
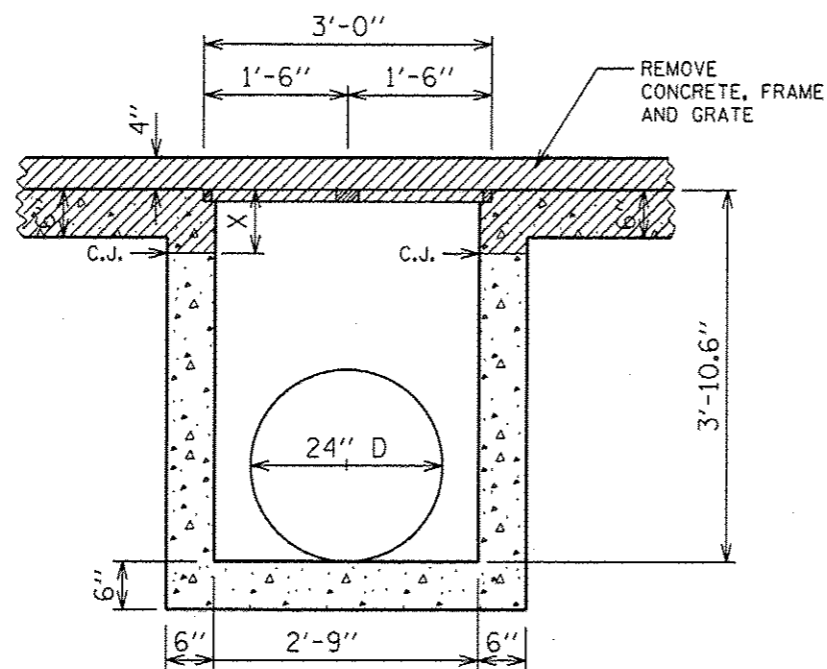


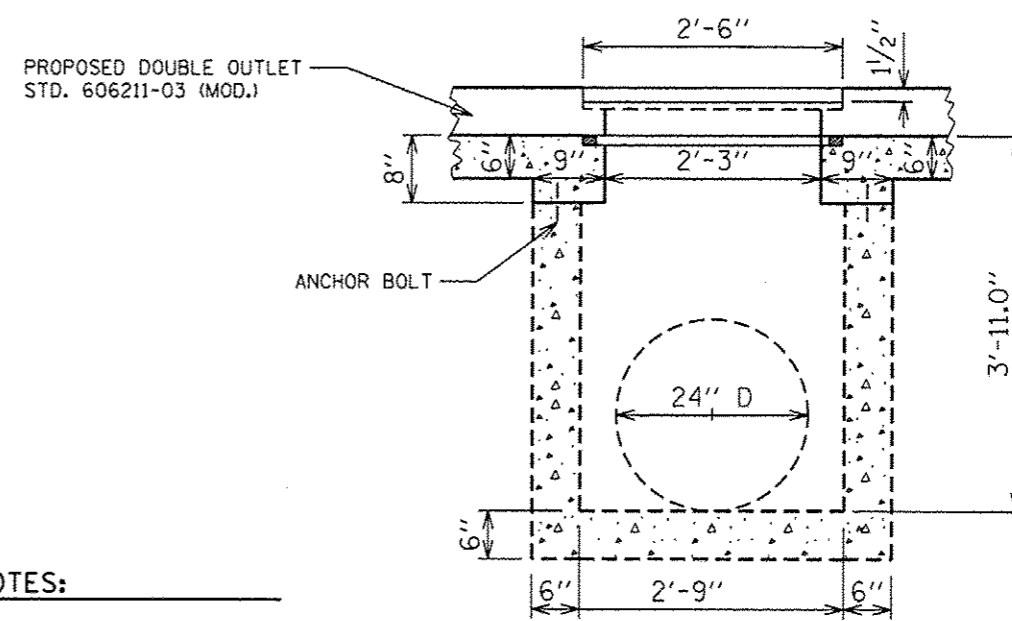
EXISTING SECTION THROUGH CENTERLINE



PROPOSED SECTION THROUGH CENTERLINE



EXISTING CROSS-SECTIONAL VIEW



PROPOSED CROSS-SECTIONAL VIEW

NOTES:

REMOVE EXISTING 26.5' OF TYPE B GUTTER. SEE PLAN VIEW ON SHEET NO. 12

* ONLY DEPTH OF THE INLET WAS MODIFIED

C.J. - CONSTRUCTION JOINT

X - VARIES BY EACH LOCATION

NOTES:

CONSTRUCT DOUBLE OUTLET TYPE B GUTTER (SECTION C-C & D-D), SEE SHEET NO. 13

FILE NAME *	USER NAME * shahdm	DESIGNED -	REVISED -
c:\pwwork\pavis\dshahdm\d0316114\06xxxx	shahdm.dgn	DRAWN - DMS	REVISED -
		CHECKED -	REVISED -
		DATE -	REVISED -

STATE OF ILLINOIS
DEPARTMENT OF TRANSPORTATION

DRAINAGE STRUCTURE DETAILS
STA. 909+00 (LT.)

SCALE: SHEET 6 OF 17 SHEETS STA. TO STA.

F.A.P. RTE.	SECTION	COUNTY	TOTAL SHEETS	SHEET NO.
510	(120)T	HANCOCK	28	17
CONTRACT NO. 72F73				
ILLINOIS FED. AID PROJECT				