

STATE OF ILLINOIS  
DEPARTMENT OF TRANSPORTATION  
DIVISION OF HIGHWAYS

**PROPOSED  
HIGHWAY PLANS**

FAP ROUTE 63 (US 24)  
SECTION (1)RS-6  
PROJECT NHF-F-0063(060)  
ROADWAY 3P RESURFACING  
ADAMS COUNTY

F.A.P. RTE.	SECTION	COUNTY	TOTAL SHEETS	SHEET NO.
63	(1)RS-6	ADAMS	24	1
FED. ROAD DIST. NO. 6		ILLINOIS	CONTRACT NO. 72F76	

D-96-008-13



LOCATION OF SECTION INDICATED THIS: -

STATE OF ILLINOIS  
DEPARTMENT OF TRANSPORTATION  
DIVISION OF HIGHWAYS

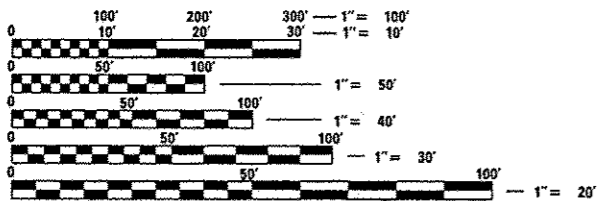
SUBMITTED *October 18, 2012*  
*Roger L. Priskell*  
DEPUTY DIRECTOR OF HIGHWAYS, REGION ENGINEER

*March 22, 2013*  
*John D. Baranzelli, P.E.*  
ENGINEER OF DESIGN AND ENVIRONMENT

*March 22, 2013*  
*Omair Osman, P.E.*  
DIRECTOR OF HIGHWAYS, CHIEF ENGINEER

FOR INDEX OF SHEETS, AND HIGHWAY STANDARDS SEE SHEET NO. 2

DESIGN DESIGNATION:  
FAP 63  
MINOR ARTERIAL (NON-URBAN)  
ADT = 3900 (2011) 4900 (2034)  
%SU = 6  
%MU = 7



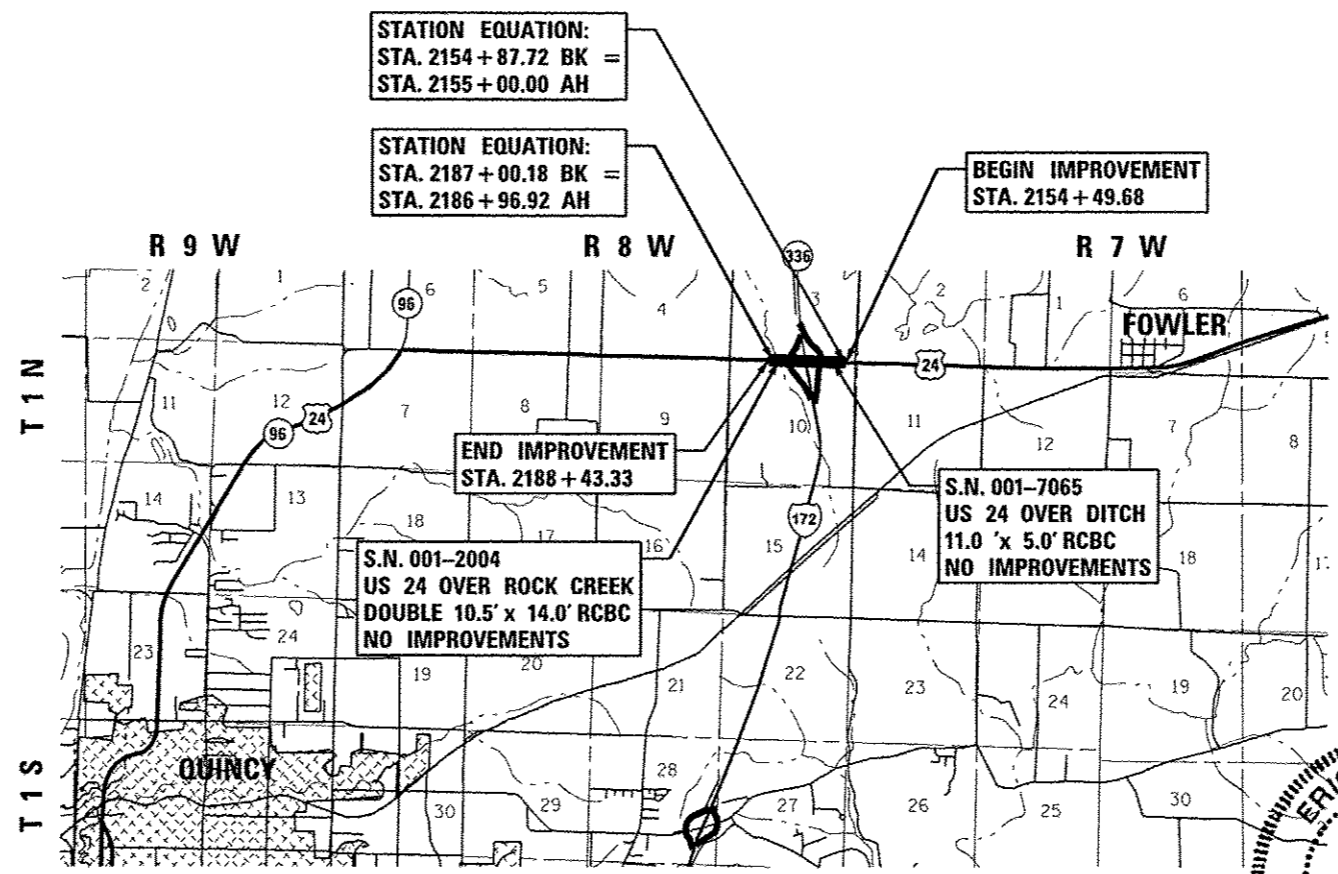
FULL SIZE PLANS HAVE BEEN PREPARED USING STANDARD ENGINEERING SCALES. REDUCED SIZED PLANS WILL NOT CONFORM TO STANDARD SCALES. IN MAKING MEASUREMENTS ON REDUCED PLANS, THE ABOVE SCALES MAY BE USED.

J.U.L.I.E.  
JOINT UTILITY LOCATION INFORMATION FOR EXCAVATION  
1-800-892-0123  
OR 811

SENIOR TEAM ENGINEER: MARK DUST (217) 785-0597  
TEAM MANAGER: KEN ANDERSON (217) 524-7546

CONTRACT NO. 72F76

C-96-008-13



LOCATION MAP  
SCALE: 1" = 4000'

GROSS LENGTH OF SECTION = 3,393.65 FT = 0.643 MILES  
NET LENGTH OF SECTION = 3,384.63 FT = 0.641 MILES

**ERIC B. BARNES**  
062-052141  
LICENSED PROFESSIONAL ENGINEER  
ILLINOIS  
*Eric B. Barnes* 1/16/12  
ERIC B. BARNES DATE  
REGISTERED PROFESSIONAL ENGINEER  
STATE OF ILLINOIS NO. 062-052141  
LICENSE EXPIRES NOVEMBER 30, 2013

PLANS PREPARED BY:  
**KLINGNER & ASSOCIATES, P.C.**  
Engineers • Architects • Surveyors  
605 North 21st Street, Quincy, IL 62450  
4508 Park Forest Road, Homewood, IL 60439  
1508 N. 4th Street, Suite 100, Berwyn, IL 60404  
49 North Prairie Street, Carbondale, IL 62901  
Ph: (618) 223-3678 • Fax: (618) 223-3803  
Ph: (618) 223-8828 • Fax: (618) 223-8812  
Ph: (618) 751-0136 • Fax: (618) 751-3465  
Ph: (618) 342-4842 • Fax: (618) 341-3781  
Internet Address: www.klingner.com  
STATE OF ILLINOIS DESIGN FIRM # 1842738

**PRINTED BY THE AUTHORITY  
OF THE STATE OF ILLINOIS**

**INDEX OF SHEETS**

SHEET NO.	DESCRIPTION
1	COVER SHEET
2	SHEETS INDEX & GENERAL NOTES
3-8	SUMMARY OF QUANTITIES
9-12	SCHEDULE OF QUANTITIES
13-14	TYPICAL SECTIONS
15	HORIZONTAL ALIGNMENT
16	HORIZONTAL CONTROL TIES
17-21	PLAN & PROFILES - F&P RTE 63 (US 24)
22	MEDIAN LAYOUT DETAIL SHEET
23-24	MISCELLANEOUS DETAILS

**STANDARDS**

**STANDARD NOS.**

000001-06	635006-03	701901-02
280001-07	635011-02	720001-01
442201-03	667101-02	720006-03
606001-05	701001-02	728001-01
606301-04	701006-04	780001-03
606306-03	701011-03	781001-03
630001-10	701201-04	782001
631011-09	701456-02	

**RATES OF APPLICATION TABLE**

AGGREGATE (SURFACE, BASE, SUBBASE, OR BACKFILL)	2.05 TON / CU YD
STONE DUMPED RIPRAP	1.50 TON / CU YD
<b>HOT-MIX ASPHALT:</b>	
BITUMINOUS MATERIALS (PRIME COAT)	0.00038 TON / SQ YD (on pavement)
BITUMINOUS MATERIALS (PRIME COAT)	0.001425 TON / SQ YD (on aggregate)
AGGREGATE PRIME COAT	0.002 TON / SQ YD
SURFACE / BINDER (112 lbs)	0.056 TON / SQ YD • IN
<b>SEEDING:</b>	
NITROGEN FERTILIZER NUTRIENT	90 LBS / ACRE
PHOSPHORUS FERTILIZER NUTRIENT	90 LBS / ACRE
POTASSIUM FERTILIZER NUTRIENT	90 LBS / ACRE
AGRICULTURAL GROUND LIMESTONE	2.0 TON / ACRE
MULCH METHOD	2.0 TON / ACRE

**COMMITMENTS**

1. FIELD/RESIDENT ENGINEER SHALL CONTACT STUDIES AND PLANS CONCERNING ANY MAJOR PLAN CHANGE TO MAKE SURE NO PREVIOUS COMMITMENTS (NOT LISTED) WERE MADE AFFECTING THE DESIGN, AND ALLOW AN IMPROVED DESIGN FOR FUTURE PROJECTS.

**GENERAL NOTES**

- THIS PROJECT IS SPLIT INTO TWO FUNDING SOURCES, SURFACE TRANSPORTATION PROGRAM (STP) AND NATIONAL HIGHWAY SYSTEM (NHS). THE SPLIT IS WHERE US 24 AND I-172 INTERSECT (US 24 STATION 2171+69.00). NHS FUNDING IS EAST OF I-172 AND STP FUNDING IS WEST OF I-172.
- THE THICKNESS OF BITUMINOUS MIXTURES SHOWN ON THE PLANS IS THE NOMINAL THICKNESS. DEVIATIONS FROM THE NOMINAL THICKNESS WILL BE PERMITTED WHEN SUCH DEVIATIONS OCCUR DUE TO IRREGULARITIES IN THE EXISTING SURFACE OR BASE ON WHICH THE BITUMINOUS MIXTURE IS PLACED.
- THE CONTRACTOR SHALL PROTECT AND CAREFULLY PRESERVE ALL PROPERTY MARKERS AND MONUMENTS UNTIL THE OWNER, AUTHORIZED AGENT, OR LAND SURVEYOR HAS WITNESSED OR OTHERWISE REFERENCED THEIR LOCATION. WHERE SECTION OR SUB-SECTION MONUMENTS ARE ENCOUNTERED, THE ENGINEER SHALL BE NOTIFIED BEFORE SUCH MONUMENTS ARE REMOVED. THE CONTRACTOR SHALL BE RESPONSIBLE FOR HAVING AN AUTHORIZED SURVEYOR RE-ESTABLISH ANY SECTION OR SUB-SECTION MONUMENTS DESTROYED BY HIS OPERATIONS.
- ALL DISTURBED AREAS WITHIN THE RIGHT-OF-WAY SHALL BE SEEDED, FERTILIZED, AND MULCHED AS SHOWN IN THE PLANS AND AS DIRECTED BY THE ENGINEER.
- DO NOT INCLUDE MULCH OR EMULSIFIED ASPHALT ON EROSION CONTROL BLANKET AREAS.
- THE CONTRACTOR SHALL BE RESPONSIBLE FOR PROTECTING UTILITY PROPERTY FROM CONSTRUCTION OPERATIONS, AS OUTLINED IN ARTICLE 107.31 OF THE STANDARD SPECIFICATIONS. THE J.U.L.L.E. NUMBER IS 1-800-892-0123. A MINIMUM OF 48 HOURS ADVANCE NOTICE IS REQUIRED.
- THE LOCATION OF BURIED AND ABOVE GROUND UTILITIES SHOWN ARE APPROXIMATE, AND ARE SHOWN FOR CONTRACTOR INFORMATIONAL USE ONLY, AND ARE NOT TO BE REFERENCED FOR CONSTRUCTION PURPOSES. THE IMPLIED PRESENCE OR ABSENCE OF UTILITIES IS NOT TO BE CONSTRUED BY THE OWNER, ENGINEER, CONTRACTOR, OR SUBCONTRACTORS TO BE AN ACCURATE AND COMPLETE REPRESENTATION OF UTILITIES THAT MAY OR MAY NOT EXIST ON THE CONSTRUCTION SITE. BURIED AND ABOVE GROUND UTILITY LOCATIONS, IDENTIFICATION, AND MARKING ARE THE SOLE RESPONSIBILITY OF THE CONTRACTOR. REROUTING, DISCONNECTION, PROTECTION, ETC. OF ANY UTILITIES MUST BE COORDINATED BETWEEN THE CONTRACTOR, UTILITY COMPANY, AND OWNER. SITE SAFETY, INCLUDING THE AVOIDANCE OF HAZARDS ASSOCIATED WITH BURIED AND ABOVE GROUND UTILITIES, REMAINS THE SOLE RESPONSIBILITY OF THE CONTRACTOR.
- IN ADDITION TO FIELD SURVEYS, PLAN DIMENSIONS AND DETAILS RELATIVE TO THE EXISTING FACILITIES HAVE BEEN TAKEN FROM EXISTING PLANS AND ARE SUBJECT TO CONSTRUCTION VARIATIONS. IT SHALL BE THE CONTRACTOR'S RESPONSIBILITY TO VERIFY SUCH DIMENSIONS AND DETAILS IN THE FIELD. SUCH VARIATIONS SHALL NOT BE A CAUSE FOR ADDITIONAL COMPENSATION DUE TO A CHANGE IN THE SCOPE OF WORK; HOWEVER, THE CONTRACTOR WILL BE PAID FOR THE QUANTITY ACTUALLY FURNISHED AT THE UNIT PRICE BID FOR THE WORK.
- ANY REFERENCE TO A STANDARD IN THESE PLANS SHALL BE INTERPRETED TO MEAN THE EDITION AS INDICATED BY THE SUB-NUMBER IN THE INDEX OF SHEETS OR THE COPY OF THE STANDARD INCLUDED IN THESE PLANS.
- ANY EXISTING ROAD SIGNS THAT INTERFERE WITH CONSTRUCTION WILL BE REMOVED OR RELOCATED AS DIRECTED BY THE ENGINEER. AFTER THE CONSTRUCTION IS COMPLETED, THE CONTRACTOR WILL REPLACE THE SIGNS AS DIRECTED BY THE ENGINEER. THIS WORK WILL NOT BE PAID SEPARATELY BUT SHALL BE CONSIDERED INCIDENTAL TO THE CONTRACT AND NO COMPENSATION WILL BE ALLOWED.
- EXISTING RAISED REFLECTIVE PAVEMENT MARKERS SHALL BE REMOVED PRIOR TO HOT-MIX ASPHALT SURFACE REMOVAL AND/OR RESURFACING.
- NO PASSING ZONES SHALL BE FIELD VERIFIED BY OPERATIONS, (217) 785-5312, 21 DAYS PRIOR TO FINAL PAVEMENT MARKINGS.
- ALL SAW CUTS, NECESSARY TO COMPLETE THE WORK DETAILED IN THESE PLANS, SHALL BE INCLUDED IN THE COST FOR THE VARIOUS PAY ITEMS INVOLVED. THE MINIMUM SAW CUT DEPTH IN THE PAVEMENT SHALL BE 1 1/2" UNLESS OTHERWISE SPECIFIED IN A DETAIL SHOWN IN THE PLANS.
- THE FOLLOWING MIXTURE REQUIREMENTS ARE APPLICABLE FOR THIS PROJECT:

LOCATION(S):	LEVEL BINDER MM	HMA SURF CSE
MIXTURE USE(S):	PG 64-22	PG 64-22
AC/PG:	PG 64-22	PG 64-22
DESIGN AIR VOIDS:	4.0% @ N DESIGN=70	4.0% @ N DESIGN=70
MIXTURE COMPOSITION: (GRADATION MIXTURE)	IL 9.5	IL 9.5 or 12.5
FRICTION AGGREGATE	N/A	MIX "C"

LOCATION(S):	INCIDENTAL SURF, HMA SHLDS	HMA BINDER, BASE COURSE WIDENING & PATCHING
MIXTURE USE(S):	PG 64-22	PG 64-22
AC/PG:	PG 64-22	PG 64-22
DESIGN AIR VOIDS:	4.0% @ N DESIGN=50	4.0% @ N DESIGN=70
MIXTURE COMPOSITION: (GRADATION MIXTURE)	IL 9.5 or 12.5	IL 19.0
FRICTION AGGREGATE	MIX "C"	N/A

**GENERAL NOTES**

- SEEDING WILL NOT BE PERMITTED AT ANY TIME WHEN THE GROUND IS FROZEN, WET, OR IN AN UNTILLABLE CONDITION. LOCATIONS TO BE SEEDED SHALL BE DETERMINED BY THE ENGINEER.
- ACCESS TO ALL SIDEROADS AND ENTRANCES SHALL BE MAINTAINED AT ALL TIMES.
- UNLESS DIRECTED BY THE ENGINEER, PAVEMENT MARKING LINES SHALL NOT BE LAID DIRECTLY OVER A LONGITUDINAL CRACK OR JOINT NOR OVER A TAR OR ASPHALT PAINTED LINE. THE EDGE OF A CENTERLINE OR LANE LINE SHALL BE OFFSET A MINIMUM DISTANCE OF 2" FROM A LONGITUDINAL CRACK OR JOINT. EDGE LINES SHALL BE APPROXIMATELY 2" FROM THE EDGE LINE OF PAVEMENT. SEE SECTION 780 OF THE STANDARD SPECIFICATIONS FOR TRAFFIC CONTROL ITEMS.

DISTRICT SIX	
EXAMINED <u>10/11</u>	20 <u>12</u>
<i>Bill Boyer</i>	
OPERATIONS ENGINEER	
EXAMINED <u>OCT 11</u>	20 <u>12</u>
<i>Tommy L...</i>	
PROJECT IMPLEMENTATION ENGINEER	
EXAMINED <u>OCT 15</u>	20 <u>12</u>
<i>ARMU</i>	
PROGRAM DEVELOPMENT ENGINEER	

STP FUNDING IS WEST OF I-172 AND NHS FUNDING IS EAST OF I-172

L24E		L050		CONSTRUCTION CODE			
STP FUNDS	NHS FUNDS						
80% FED	80% FED						
20% STATE	20% STATE						
ROADWAY	ROADWAY						
0005	0005						
RURAL	RURAL						

CODE NO.	ITEM	UNIT	TOTAL QUANTITY	L24E	L050	CONSTRUCTION CODE			
20200100	EARTH EXCAVATION	CU YD	820	381	439				
21400100	GRADING AND SHAPING DITCHES	FOOT	253		253				
28000500	INLET AND PIPE PROTECTION	EACH	2		2				
28100707	STONE DUMPED RIPRAP, CLASS A4	SO YD	372		372				
28200200	FILTER FABRIC	SO YD	372		372				
31101000	SUBBASE GRANULAR MATERIAL, TYPE B	TON	1579	763	816				
35300605	PORTLAND CEMENT CONCRETE BASE COURSE 11 1/4"	SO YD	88	43	45				
35300720	PORTLAND CEMENT CONCRETE BASE COURSE 13"	SO YD	653	255	398				
40600200	BITUMINOUS MATERIALS (PRIME COAT)	TON	13.5	6.7	6.8				
40600300	AGGREGATE (PRIME COAT)	TON	71	35	36				
40600895	CONSTRUCTING TEST STRIP	EACH	2	1	1				
40600990	TEMPORARY RAMP	SO YD	500	234	266				
40603085	HOT-MIX ASPHALT BINDER COURSE, IL-19.0, N70	TON	1758	868	890				
40603315	HOT-MIX ASPHALT SURFACE COURSE, MIX "C", N70	TON	1171	578	593				

14

STP FUNDING IS WEST OF I-172 AND NHS FUNDING IS EAST OF I-172

CODE NO.	ITEM	UNIT	TOTAL QUANTITY	L24E		L050		CONSTRUCTION CODE										
				STP FUNDS		NHS FUNDS												
				80% FED	20% STATE	80% FED	20% STATE											
				ROADWAY	ROADWAY	ROADWAY	ROADWAY											
				0005	0005													
				RURAL	RURAL													
40800050	INCIDENTAL HOT-MIX ASPHALT SURFACING	TON	6				6											
42001300	PROTECTIVE COAT	SO YD	3299	1622		1677												
44000100	PAVEMENT REMOVAL	SO YD	69	32		37												
44000156	HOT-MIX ASPHALT SURFACE REMOVAL, 1 3/4"	SO YD	7454	3757		3697												
44000165	HOT-MIX ASPHALT SURFACE REMOVAL, 4"	SO YD	13911	6864		7047												
44000500	COMBINATION CURB AND GUTTER REMOVAL	FOOT	4244	2095		2149												
44001980	CONCRETE BARRIER REMOVAL	FOOT	300	150		150												
44004250	PAVED SHOULDER REMOVAL	SO YD	523	233		290												
44200152	PAVEMENT PATCHING, TYPE I, 13 INCH	SO YD	45	22.5		22.5												
44200156	PAVEMENT PATCHING, TYPE II, 13 INCH	SO YD	825	412.5		412.5												
44200160	PAVEMENT PATCHING, TYPE III, 13 INCH	SO YD	430	215		215												
44200162	PAVEMENT PATCHING, TYPE IV, 13 INCH	SO YD	125	62.5		62.5												
48102100	AGGREGATE WEDGE SHOULDER, TYPE B	TON	323	158		165												
48203100	HOT-MIX ASPHALT SHOULDERS	TON	621	316		305												

STP FUNDING IS WEST OF I-172 AND NHS FUNDING IS EAST OF I-172

LZAE		L050		CONSTRUCTION CODE			
STP FUNDS	NHS FUNDS						
80% FED	80% FED						
20% STATE	20% STATE						
ROADWAY	ROADWAY						
0005	0005						
RURAL	RURAL						

CODE NO.	ITEM	UNIT	TOTAL QUANTITY	LZAE	L050	CONSTRUCTION CODE	CONSTRUCTION CODE	CONSTRUCTION CODE	CONSTRUCTION CODE
60500060	REMOVING INLETS	EACH	2	1	1				
60608552	COMBINATION CONCRETE CURB AND GUTTER, TYPE M-4.06	FOOT	3453	1706	1747				
60608600	COMBINATION CONCRETE CURB AND GUTTER, TYPE M-6.06	FOOT	127	55	72				
60618300	CONCRETE MEDIAN SURFACE, 4 INCH	SO FT	20390	9989	10401				
60624600	CORRUGATED MEDIAN	SO FT	1588	788	800				
* 63000001	STEEL PLATE BEAM GUARDRAIL, TYPE A, 6 FOOT POSTS	FOOT	550	275	275				
* 63100045	TRAFFIC BARRIER TERMINAL, TYPE 2	EACH	2	1	1				
* 63100167	TRAFFIC BARRIER TERMINAL, TYPE 1 (SPECIAL) TANGENT	EACH	2	1	1				
66700205	PERMANENT SURVEY MARKERS, TYPE I	EACH	7	4	3				
67000400	ENGINEER'S FIELD OFFICE, TYPE A	CAL MO	6	3	3				
67100100	MOBILIZATION	L SUM	1	0.5	0.5				
70100450	TRAFFIC CONTROL AND PROTECTION, STANDARD 701201	L SUM	1	0.5	0.5				
70100825	TRAFFIC CONTROL AND PROTECTION, STANDARD 701456	L SUM	1	0.5	0.5				
70103815	TRAFFIC CONTROL SURVEILLANCE	CAL DA	10	5	5				

\*SPECIALTY ITEM

FILE NAME	USER NAME	DESIGNED	REVISED	<b>STATE OF ILLINOIS DEPARTMENT OF TRANSPORTATION</b>	<b>SUMMARY OF QUANTITIES</b>				F.A.P. RTE.	SECTION	COUNTY	TOTAL SHEETS	SHEET NO.
q:\03\105\B0224\24\24 over frazer creek - roadway plans\us 24 g 1-172\cod		DRAWN De72F76-shi-Summary.dgn	REVISED						63	(HRS-6)	ADAMS	24	5
PLOT SCALE = 1/4"=1'-0"		CHECKED	REVISED						SCALE: none SHEET NO. 3 OF 6 SHEETS STA. TO STA.				FED. ROAD DIST. NO. 6 ILLINOIS FED. AID PROJECT
PLOT DATE = 10/28/2012		DATE	REVISED						CONTRACT NO. 72F76				

STP FUNDING IS WEST OF I-172 AND NHS FUNDING IS EAST OF I-172

L2AE		L050		CONSTRUCTION CODE			
STP FUNDS	NHS FUNDS						
80% FED	80% FED						
20% STATE	20% STATE						
ROADWAY	ROADWAY						
0005	0005						
RURAL	RURAL						

CODE NO.	ITEM	UNIT	TOTAL QUANTITY	L2AE	L050	CONSTRUCTION CODE			
* 70300100	SHORT TERM PAVEMENT MARKING	FOOT	1104	552	552				
* 70300210	TEMPORARY PAVEMENT MARKING LETTERS AND SYMBOLS	SO FT	150	72	78				
* 70300230	TEMPORARY PAVEMENT MARKING - LINE 5"	FOOT	13818	6835	6983				
* 70300240	TEMPORARY PAVEMENT MARKING - LINE 6"	FOOT	590	280	310				
* 70300250	TEMPORARY PAVEMENT MARKING - LINE 8"	FOOT	380	176	204				
* 70300260	TEMPORARY PAVEMENT MARKING - LINE 12"	FOOT	227	102	125				
* 70300280	TEMPORARY PAVEMENT MARKING - LINE 24"	FOOT	72	36	36				
70301000	WORK ZONE PAVEMENT MARKING REMOVAL	SO FT	6950	3413	3537				
* 72000100	SIGN PANEL - TYPE 1	SO FT	18	9	9				
* 72800100	TELESCOPING STEEL SIGN SUPPORT	FOOT	30	15	15				
* 78004200	PREFORMED PLASTIC PAVEMENT MARKING, TYPE B - INLAID - LETTERS AND SYMBOLS	SO FT	150	72	78				
* 78004280	PREFORMED PLASTIC PAVEMENT MARKING, TYPE B - INLAID - LINE 24"	FOOT	72	36	36				
* 78009005	MODIFIED URETHANE PAVEMENT MARKING - LINE 5"	FOOT	13818	6835	6983				
* 78009006	MODIFIED URETHANE PAVEMENT MARKING - LINE 6"	FOOT	590	280	310				

\* SPECIALTY ITEM

STP FUNDING IS WEST OF I-172 AND NHS FUNDING IS EAST OF I-172

CODE NO.	ITEM	UNIT	TOTAL QUANTITY	L2AE		L050		CONSTRUCTION CODE			
				STP FUNDS		NHS FUNDS					
				80% FED	20% STATE	80% FED	20% STATE				
				ROADWAY	0005 RURAL	ROADWAY	0005 RURAL				
* 78009008	MODIFIED URETHANE PAVEMENT MARKING - LINE 8"	FOOT	380	176		204					
* 78009012	MODIFIED URETHANE PAVEMENT MARKING - LINE 12"	FOOT	227	102		125					
* 78100100	RAISED REFLECTIVE PAVEMENT MARKER	EACH	146	73		73					
* 78200300	PRISMATIC CURB REFLECTOR	EACH	171	85		86					
* 78200410	GUARDRAIL MARKERS, TYPE A	EACH	12	6		6					
* 78201000	TERMINAL MARKER - DIRECT APPLIED	EACH	2	1		1					
	78300200	RAISED REFLECTIVE PAVEMENT MARKER REMOVAL	EACH	146	73		73				
	Z0041500	PLUG EXISTING CULVERTS	EACH	2	1		1				
	X6431120	REMOVE IMPACT ATTENUATOR SAND MODULE	EACH	2	1		1				
+	X0320157	CLEANING UNDERDRAIN OUTLETS	EACH	2	1		1				
	X0322279	OUTLET MARKER	EACH	4	1		3				
+	X0325893	CLEAN EXISTING END SECTION	EACH	2	2						
	X4402020	CONCRETE MEDIAN SURFACE REMOVAL	SO FT	12236	6068		6168				
	X4403300	CONCRETE MEDIAN REMOVAL	SO FT	650	333		317				

\* SPECIALTY ITEM + NON-PARTICIPATING 100% STATE

FILE NAME	USER NAME	DESIGNED	REVISED	STATE OF ILLINOIS DEPARTMENT OF TRANSPORTATION	SUMMARY OF QUANTITIES	F.A.P. RTE.	SECTION	COUNTY	TOTAL SHEETS	SHEET NO.
q:\2014\11\11082241-2 - us 24 over tractor creek - roadway plan\us 24 5 1-172\cod		DRAWN 06/27/25-ahf-Summary.dgn	REVISED			63	(IRS-6)	ADAMS	24	7
PLOT SCALE - 1/8"=1'-0"	CHECKED	REVISED				SCALE: none	SHEET NO. 5 OF 6 SHEETS	STA.	TO STA.	FED. ROAD DIST. NO. 6 ILLINOIS FED. AID PROJECT
PLOT DATE - 11/18/2012	DATE	REVISED				CONTRACT NO. 72F76				





EARTH EXCAVATION / GRANULAR SUBBASE SCHEDULE

ITEM	UNIT	TOTAL
EARTH EXCAVATION	CU YD	700
SUBBASE GRANULAR MATERIAL, TYPE B	TON	1430

ITEMS IN THIS SCHEDULE ARE ESTIMATED QUANTITIES TO BE USED FOR GROUND IMPROVEMENTS FOR PLACEMENT OF SUBBASE GRANULAR MATERIAL UNDER BASE COURSE, MEDIANS, CURB AND GUTTER, ETC., AS DIRECTED BY THE ENGINEER. IT MAY BE REDUCED, INCREASED, OR DELETED BY THE ENGINEER BASED ON ACTUAL FIELD CONDITIONS. NO WORK INVOLVING THESE ESTIMATED QUANTITIES SHALL BE PERFORMED WITHOUT THE DIRECTION AND APPROVAL OF THE ENGINEER.

EARTH EXCAVATION

20200500

STATION TO STATION	SIDE	CU YD
FAP 63 (US 24) - NHS FUNDING		
2154+49.7 2155+07.0	LT	3.5
2154+49.7 2155+20.0	RT	4.3
RAMP B - NHS FUNDING		
0+23.1 1+79.3	RT	28.5
0+23.1 1+79.3	LT	47.1
RAMP C - STP FUNDING		
22+12.6 23+41.2	RT	17.3
22+12.6 23+41.2	LT	19.0
TOTAL		119.8
USE		120

NOTE: THIS QUANTITY USED FOR EXCAVATION FOR BASE COURSE, BASE COURSE WIDENING, ETC., WHEN AT THE EDGE OF PAVEMENT.

GRADING AND SHAPING DITCHES

21400100

STATION TO STATION	SIDE	FOOT
FAP 63 (US 24) - NHS FUNDING		
2156+59.0 2157+59.0	LT	100
RAMP A - NHS FUNDING		
18+80.0 20+33.0	RT	153
TOTAL		253

INLET AND PIPE PROTECTION

28000500

STATION	SIDE	EACH
FAP 63 (US 24) - NHS FUNDING		
2157+59.0	LT	1
2164+00.0	RT	1
TOTAL		2

RIPRAP SCHEDULE

28100707 28200200

STATION TO STATION	SIDE	WIDTH	STONE DUMPED CLASS A4	FILTER FABRIC
			SO YD	
FAP 63 (US 24) - NHS FUNDING				
2156+59.0 2157+59.0	LT	10.0	111.1	111.1
RAMP A - NHS FUNDING				
18+80.0 20+33.0	RT	13.0	260.0	260.0
TOTALS			371.1	371.1
USE			372	372

PCC BASE COURSE SCHEDULE

35300605 35300720 31101000

STATION TO STATION	SIDE	PCC BASE COURSE 11 1/4"	PCC BASE COURSE 13"	SUBBASE GRANULAR MATERIAL TY B
		SO YD	SO YD	TON
FAP 63 (US 24) - NHS FUNDING				
2154+49.7 2155+07.0	LT		15.1	3.4
2154+49.7 2155+20.0	RT		18.8	4.3
2164+61.6 2165+17.1	LT & RT	11.5		
2165+78.5 2166+56.8	RT	23.5		
FAP 63 (US 24) - STP FUNDING				
2176+82.8 2177+59.8	LT	22.7		
2178+16.1 2178+68.6	LT & RT	5.5		
RAMP A - NHS FUNDING				
20+20.8 20+43.7	LT & RT	10.0		
RAMP B - NHS FUNDING				
0+23.1 1+79.3	RT		184.3	42.0
0+23.1 1+79.3	LT		179.7	40.9
RAMP C - STP FUNDING				
22+12.6 23+41.2	RT		155.9	35.5
22+12.6 23+41.2	LT		99.2	22.6
23+13.7 23+33.7	LT & RT	14.8		
TOTALS		87.9	653.0	148.7
USE		88	653	149

MISCELLANEOUS PAVING ITEMS SCHEDULE

ITEM	UNIT	TOTAL
CONSTRUCTING TEST STRIP	EACH	2
TEMPORARY RAMP	SO YD	500
BITUMINOUS MATERIALS (PRIME COAT)	TON	13.5
AGGREGATE (PRIME COAT)	TON	71

THE SCHEDULE FOR MISCELLANEOUS PAVING ITEMS ARE ESTIMATED QUANTITIES. IT MAY BE REDUCED, INCREASED, OR DELETED BY THE ENGINEER BASED ON ACTUAL FIELD CONDITIONS. NO WORK INVOLVING THESE ESTIMATED QUANTITIES SHALL BE PERFORMED WITHOUT THE DIRECTION AND APPROVAL OF THE ENGINEER.

AGGREGATE WEDGE SHOULDERS, TYPE B

48102100

STATION TO STATION	SIDE	TON
FAP 63 (US 24) - NHS FUNDING		
2154+49.7 2170+59.1	LT	64.4
2154+49.7 2170+91.5	RT	71.3
FAP 63 (US 24) - STP FUNDING		
2172+46.3 2188+11.9	LT	67.4
2172+78.6 2188+15.4	RT	65.0
RAMP A - NHS FUNDING		
19+61.1 20+51.3	LT	3.6
19+61.1 20+51.3	RT	5.3
RAMP B - NHS FUNDING		
0+23.1 1+79.3	LT	9.5
0+23.1 1+79.3	RT	10.4
RAMP C - STP FUNDING		
22+12.6 23+41.8	LT	5.5
22+12.6 23+41.8	RT	9.5
RAMP D - STP FUNDING		
0+23.8 1+16.7	LT	3.6
0+23.8 1+16.7	RT	7.0
TOTAL		322.5
USE		323

ROADWAY PAVING SCHEDULE

44000165 40603085 40603315

LOCATION STATION TO STATION	SIDE	HMA SURF REM 4"	BINDER COURSE IL-19.0, N70	HMA SURFACE COURSE MIX "C", N70
		SO YD	TON	
FAP 63 (US 24) - NHS FUNDING				
2154+49.7 2171+69.0	LT & RT	5967.0	753.5	502.2
FAP 63 (US 24) - STP FUNDING				
2171+69.0 2188+43.3	LT & RT	5863.2	739.6	493.0
RAMP A - NHS FUNDING				
19+61.1 20+51.3	LT & RT	516.3	65.4	43.4
RAMP B - NHS FUNDING				
0+23.1 1+79.3	LT & RT	563.3	71.1	47.3
RAMP C - STP FUNDING				
22+12.6 23+41.8	LT & RT	558.3	71.5	47.6
RAMP D - STP FUNDING				
0+23.8 1+16.7	LT & RT	442.8	56.0	37.2
TOTALS		13910.9	1757.1	1170.7
USE		13911	1758	1171

SHOULDER PAVING SCHEDULE

44000156 48203100

LOCATION STATION TO STATION	SIDE	HMA SURF REM 1 3/4"	HMA SHLDS
		SO YD	TON
FAP 63 (US 24) - NHS FUNDING			
2154+49.7 2171+69.0	LT	1613.8	135.6
2154+49.7 2171+69.0	RT	1597.7	134.2
FAP 63 (US 24) - STP FUNDING			
2171+69.0 2188+43.3	LT	1682.8	141.4
2171+69.0 2188+43.3	RT	1661.8	139.6
RAMP A - NHS FUNDING			
19+61.1 20+51.3	LT	39.2	3.3
19+61.1 20+51.3	RT	108.1	9.1
RAMP B - NHS FUNDING			
0+23.1 1+79.3	LT	87.3	7.4
0+23.1 1+79.3	RT	184.3	15.5
RAMP C - STP FUNDING			
22+12.6 23+41.8	LT	57.4	4.9
22+12.6 23+41.8	RT	155.9	13.1
RAMP D - STP FUNDING			
0+23.8 1+16.7	LT	59.0	5.0
0+23.8 1+16.7	RT	140.1	11.8
TOTALS		7387.1	620.9
USE		7388	621

ENTRANCE SCHEDULE

40800050 44000156

STATION	SIDE	TYPE	WIDTH	AREA (SQ YD)	INCIDENTAL HMA SURFACING	HMA SURF REM 1 3/4"
					TON	SO YD
FAP 63 (US 24) - NHS FUNDING						
2158+00.0	LT	AC RD	VAR	65.5	5.5	65.5
TOTAL					5.5	65.5
USE					6	66

PAVEMENT PATCHING SCHEDULE

44200152 44200156 44200160 44200162

STATION	TYPE I 13 INCH	TYPE II 13 INCH	TYPE III 13 INCH	TYPE IV 13 INCH
	SO YD			
IDOT PATCHING SURVEY	45	825	430	125
TOTALS	45	825	430	125

NOTE: SPLIT EQUALLY PER FUNDING SOURCE IN SUMMARY OF QUANTITIES. THE ENGINEER WILL ADJUST BASED ON ACTUAL FIELD CONDITIONS.

PAVEMENT REMOVAL

44000100

STATION TO STATION	SIDE	SO YD
FAP 63 (US 24) - NHS FUNDING		
2165+78.5	2166+54.8	RT 23.5
FAP 63 (US 24) - STP FUNDING		
2176+84.8	2177+59.8	LT 25.6
RAMP A - NHS FUNDING		
20+20.8	20+43.7	LT & RT 9.7
RAMP C - STP FUNDING		
23+13.7	23+33.7	LT & RT 6.4
TOTAL		68.2
USE		69

CURB AND GUTTER REMOVAL

44000500

STATION TO STATION	SIDE	FOOT
FAP 63 (US 24) - NHS FUNDING		
2159+83.9	2165+06.4	RT 522.4
2159+83.9	2165+08.1	LT 525.6
2166+54.8	2171+69.0	LT 514.7
2166+54.8	2171+69.0	RT 514.2
FAP 63 (US 24) - STP FUNDING		
2171+69.0	2176+84.8	LT 515.9
2171+69.0	2176+84.8	RT 518.0
2178+25.7	2183+25.0	RT 500.3
2178+29.6	2183+25.0	LT 495.7
RAMP A - NHS FUNDING		
20+20.8	20+43.7	LT & RT 71.4
RAMP C - STP FUNDING		
23+13.7	23+33.7	LT & RT 65.4
TOTAL		4243.6
USE		4244

CONCRETE BARRIER REMOVAL

44001980

STATION TO STATION	SIDE	FOOT
FAP 63 (US 24) - NHS FUNDING		
2170+94.0	2171+69.0	LT 75
2170+94.0	2171+69.0	RT 75
FAP 63 (US 24) - STP FUNDING		
2171+69.0	2172+44.0	LT 75
2171+69.0	2172+44.0	RT 75
TOTAL		300

PAVED SHOULDER REMOVAL

44004250

STATION TO STATION	SIDE	SO YD
FAP 63 (US 24) - NHS FUNDING		
2154+49.7	2155+07.0	LT 10.0
2154+49.7	2155+20.0	RT 12.6
RAMP B - NHS FUNDING		
0+23.1	1+79.3	RT 162.0
0+23.1	1+79.3	LT 104.5
RAMP C - STP FUNDING		
22+12.6	23+41.2	RT 155.9
22+12.6	23+41.2	LT 77.1
TOTAL		522.2
USE		523

REMOVING INLETS

60500060

STATION	SIDE	OFFSET	EACH
FAP 63 (US 24) - NHS FUNDING			
2164+91.3	RT	1.1	1
FAP 63 (US 24) - STP FUNDING			
2180+62.7	RT	0.8	1
TOTAL			2

RAISED REFLECTIVE PAVEMENT MARKER REMOVAL

78300200

STATION TO STATION	SIDE	EACH
FAP 63 (US 24) - NHS FUNDING		
2154+49.7	2171+69.0	LT & RT 73
FAP 63 (US 24) - STP FUNDING		
2171+69.0	2188+43.3	LT & RT 73
TOTAL		146

NOTE: THIS IS AN ESTIMATED QUANTITY.

PLUG EXISTING CULVERTS

Z0041500

STATION	SIDE	OFFSET	EACH
FAP 63 (US 24) - NHS FUNDING			
2164+91.3	RT	1.1	1
FAP 63 (US 24) - STP FUNDING			
2180+62.7	RT	0.8	1
TOTAL			2

SAND MODULE IMPACT ATTENUATOR TO BE REMOVED

Z0056220

STATION	SIDE	EACH
FAP 63 (US 24) - NHS FUNDING		
2170+80.0	RT	1
FAP 63 (US 24) - STP FUNDING		
2172+60.0	LT	1
TOTAL		2

CONCRETE MEDIAN SURFACE REMOVAL

X4402020

STATION TO STATION	SIDE	SO FT
FAP 63 (US 24) - NHS FUNDING		
2159+83.9	2161+69.9	LT & RT 1391.7
2164+96.3	2165+06.4	LT & RT 103.7
2166+54.8	2171+69.0	LT & RT 4409.8
FAP 63 (US 24) - STP FUNDING		
2171+69.0	2176+84.8	LT & RT 4470.1
2178+25.7	2178+37.8	LT & RT 97.7
2181+49.3	2183+25.0	LT & RT 1279.4
RAMP A - NHS FUNDING		
20+20.8	20+43.7	LT & RT 262.1
RAMP C - STP FUNDING		
23+13.7	23+33.7	LT & RT 220.6
TOTAL		12235.1
USE		12236

CORRUGATED MEDIAN REMOVAL

X6060500

STATION TO STATION	SIDE	SO FT
FAP 63 (US 24) - NHS FUNDING		
2158+47.7	2160+53.6	RT 799.3
FAP 63 (US 24) - STP FUNDING		
2182+58.4	2184+60.8	RT 787.8
TOTAL		1587.1
USE		1588

CONCRETE MEDIAN REMOVAL

X4403300

STATION TO STATION	SIDE	SO FT
FAP 63 (US 24) - NHS FUNDING		
2159+76.7	2159+83.9	RT 27.8
2165+06.4	2165+17.1	RT 69.8
2166+05.4	2166+54.8	RT 219.5
FAP 63 (US 24) - STP FUNDING		
2176+84.8	2177+34.3	LT 219.4
2178+16.1	2178+29.6	LT 86.8
2183+25.0	2183+31.8	RT 26.0
TOTAL		649.3
USE		650

FILE NAME =	USER NAME = ebb	DESIGNED -	REVISED -
ca:\08files\080224\wo 2 - us 24 over frazier creek - roadway plans\us 24 & r-172\code		DRAWN D672F76-shr:Schedules.dgn	REVISED -
	PLOT SCALE = 100.0000' / IN.	CHECKED -	REVISED -
	PLOT DATE = 10/16/2012	DATE -	REVISED -

STATE OF ILLINOIS  
DEPARTMENT OF TRANSPORTATION

SCHEDULE OF QUANTITIES

SCALE: none SHEET NO. 2 OF 4 SHEETS STA. TO STA.

F.A.P. RTE.	SECTION	COUNTY	TOTAL SHEETS	SHEET NO.
63	(1)RS-6	ADAMS	24	10
CONTRACT NO. 72F76				
FED. ROAD DIST. NO. 6 ILLINOIS FED. AID PROJECT				

COMBINATION CONCRETE CURB AND GUTTER SCHEDULE

STATION TO STATION	SIDE	60608552 60608600 42001300		PROTECTIVE COAT
		CONCRETE C & G M-4.06	CONCRETE C & G M-6.06	
		FOOT		SO YD
FAP 63 (US 24) - NHS FUNDING				
2159+83.9	2165+04.1	LT	522.2	82.2
2159+83.9	2165+04.1	RT	520.3	81.9
2168+16.9	2171+69.0	LT	352.6	55.5
2168+16.9	2171+69.0	RT	352.1	55.5
FAP 63 (US 24) - STP FUNDING				
2171+69.0	2175+21.1	LT	352.1	55.5
2171+69.0	2175+21.1	RT	354.2	55.8
2178+26.0	2183+24.7	LT	499.0	78.5
2178+26.0	2183+24.7	RT	500.4	78.8
RAMP A - NHS FUNDING				
20+20.8	20+43.7	LT & RT	71.8	13.3
RAMP C - STP FUNDING				
23+13.7	23+33.7	LT & RT	54.8	10.2
TOTALS			3452.9	567.2
USE			3453	568

CONCRETE MEDIAN SURFACE SCHEDULE

STATION TO STATION	SIDE	60618300 42001300	
		CONCRETE MED SURF 4 INCH	PROTECTIVE COAT
		SO FT	SO YD
FAP 63 (US 24) - NHS FUNDING			
2159+83.9	2161+69.9	LT & RT	1422.7
2161+69.9	2165+04.1	LT & RT	4896.7
2168+16.9	2171+69.0	LT & RT	3844.3
FAP 63 (US 24) - STP FUNDING			
2171+69.0	2175+21.1	LT & RT	3844.3
2178+26.0	2181+49.4	LT & RT	4700.0
2181+49.4	2183+24.7	LT & RT	1307.7
RAMP A - NHS FUNDING			
20+20.8	20+43.7	LT & RT	236.9
RAMP C - STP FUNDING			
23+13.7	23+33.7	LT & RT	137.1
TOTALS			20389.7
USE			20390

CORRUGATED MEDIAN SCHEDULE

STATION TO STATION	SIDE	60624600 42001300	
		CORRUGATED MEDIAN	PROTECTIVE COAT
		SO FT	SO YD
FAP 63 (US 24) - NHS FUNDING			
2158+47.7	2160+53.6	RT	799.3
FAP 63 (US 24) - STP FUNDING			
2182+58.4	2184+60.8	RT	787.8
TOTALS			1587.1
USE			1588

CONCRETE MEDIAN SCHEDULE

STATION TO STATION	SIDE	X6065701 42001300	
		CONCRETE MEDIAN SM-4.06	PROTECTIVE COAT
		SO FT	SO YD
FAP 63 (US 24) - NHS FUNDING			
2159+76.7	2159+83.9	RT	27.8
2165+04.1	2165+11.3	RT	47.6
2166+04.8	2168+16.9	RT	1218.7
FAP 63 (US 24) - STP FUNDING			
2175+21.1	2177+34.8	LT	1228.5
2178+18.9	2178+26.0	LT & RT	47.7
2183+24.7	2183+31.8	RT	27.9
TOTALS			2598.2
USE			2599

SIGN SCHEDULE

STATION	SIDE	TYPE	72000100 72800100	
			SIGN PANEL TY 1	TELESCOPING STEEL SIGN SUPPORT
			SO FT	FOOT
RAMP A - NHS FUNDING				
20+18	LT	R1-1 (STOP SIGN)	9	15
RAMP C - STP FUNDING				
23+12	LT	R1-1 (STOP SIGN)	9	15
TOTALS			18	30

CLEANING UNDERDRAIN OUTLETS

X0320157			
STATION	SIDE	OFFSET	EACH
FAP 63 (US 24) - STP FUNDING			
2177+59.6	LT	45.0	1
RAMP B - NHS FUNDING			
1+32.2	RT	19.0	1
TOTAL			2

OUTLET MARKER

X0322279		
STATION	SIDE	EACH
FAP 63 (US 24) - NHS FUNDING		
2162+99.4	LT	1
FAP 63 (US 24) - STP FUNDING		
2177+59.6	LT	1
RAMP B - NHS FUNDING		
1+32.2	RT	1
1+50.0	LT	1
TOTAL		4

CLEAN EXISTING END SECTION

X0325893			
STATION	SIDE	OFFSET	EACH
FAP 63 (US 24) - STP FUNDING			
2173+66.0	RT	51.2	1
2173+93.4	LT	52.9	1
TOTAL			2

GUARDRAIL SCHEDULE

STATION TO STATION	SIDE	63000001 63100045 63100167 78200410 78201000		GUARDRAIL MARKERS TYPE A	TERMINAL MARKERS DIRECT APPLIED
		SPBGR TYPE A 6' POSTS	TRAF BARRIER TYPE 2		
		FOOT	EACH		
FAP 63 (US 24) - NHS FUNDING					
2169+12.5	2171+69.0	RT	206.5	1	4
2170+87.5	2171+69.0	LT	69.0	1	2
FAP 63 (US 24) - STP FUNDING					
2171+69.0	2172+50.0	RT	68.5	1	2
2171+69.0	2174+25.0	LT	206.0	1	4
TOTALS			550	2	12

PERMANENT SURVEY MARKERS, TYPE I

66700205		
STATION	DESCRIPTION	EACH
FAP 63 (US 24) - NHS FUNDING		
2154+87.72	POT	1
2155+00.00	POT	1
2164+82.88	POT	1
FAP 63 (US 24) - STP FUNDING		
2178+48.38	POT	1
2178+66.37	POT	1
2187+00.18	POT	1
2186+96.92	POT	1
TOTAL		7

PREFORMED PLASTIC PAVEMENT MARKING  
TYPE B - INLAID - LETTERS AND SYMBOLS

78004200

STATION TO STATION	SIDE	DESCRIPTION	WHITE	
			SO FT	
FAP 63 (US 24) - NHS FUNDING				
2166+06.8	2168+16.9	LT IS	TURN ARROWS	46.8
FAP 63 (US 24) - STP FUNDING				
2175+21.1	2177+32.8	RT IS	TURN ARROWS	46.8
RAMP A - NHS FUNDING				
19+61.1	20+51.3	LT & RT	TURN ARROWS	31.2
RAMP C - STP FUNDING				
22+12.6	23+41.2	LT & RT	TURN/WRONG WAY ARROWS	24.3
TOTAL				149.1
USE				150

PREFORMED PLASTIC PAVEMENT MARKING  
TYPE B - INLAID - LINE 24"

78004280

STATION TO STATION	SIDE	DESCRIPTION	WHITE	
			FOOT	
RAMP A - NHS FUNDING				
19+61.1	20+51.3	LT & RT	STOP BAR	36.0
RAMP C - STP FUNDING				
22+12.6	23+41.2	LT & RT	STOP BAR	36.0
TOTAL				72.0
USE				72

MODIFIED URETHANE PAVEMENT MARKING - LINE 6"

78009006

STATION TO STATION	SIDE	DESCRIPTION	WHITE	
			FOOT	
FAP 63 (US 24) - NHS FUNDING				
2166+06.8	2168+16.9	LT IS	TURN LANE	210.1
2168+16.9	2170+86.9	LT IS	SKIP-DASH	68.0
FAP 63 (US 24) - STP FUNDING				
2172+51.1	2175+21.1	RT IS	SKIP-DASH	68.0
2175+21.1	2177+32.8	RT IS	TURN LANE	211.8
RAMP A - NHS FUNDING				
19+61.1	20+51.3	LT	LANE LINE	31.8
TOTAL				589.7
USE				590

MODIFIED URETHANE PAVEMENT MARKING - LINE 8"

78009008

STATION TO STATION	SIDE	DESCRIPTION	WHITE	
			FOOT	
RAMP A - NHS FUNDING				
19+61.1	20+51.3	LT & RT	CHANNELIZATION	204.3
RAMP C - STP FUNDING				
22+12.6	23+41.2	LT & RT	CHANNELIZATION	175.5
TOTAL				379.8
USE				380

MODIFIED URETHANE PAVEMENT MARKING - LINE 12"

78009012

STATION TO STATION	SIDE	DESCRIPTION	WHITE	YELLOW
			FOOT	FOOT
FAP 63 (US 24) - NHS FUNDING				
2157+00.0	2158+48.7	CL	CHANNELIZATION	27.9
FAP 63 (US 24) - STP FUNDING				
2184+59.8	2186+00.0	CL	CHANNELIZATION	24.3
RAMP A - NHS FUNDING				
19+61.1	20+51.3	LT & RT	CHANNELIZATION	96.8
RAMP C - STP FUNDING				
22+12.6	23+41.2	LT & RT	CHANNELIZATION	77.6
TOTALS				174.4
USE				227

MODIFIED URETHANE PAVEMENT MARKING - LINE 5"

78009005

STATION TO STATION	SIDE	DESCRIPTION	WHITE	YELLOW
			FOOT	FOOT
FAP 63 (US 24) - NHS FUNDING				
2154+49.7	2157+00.0	CL	NO-PASSING	476.1
2154+49.7	2171+69.0	LT OS	EDGE LINE	1553.5
2154+49.7	2171+69.0	RT OS	EDGE LINE	1553.8
2157+00.0	2165+11.3	LT IS	EDGE LINE	817.4
2157+00.0	2165+11.3	RT IS	EDGE LINE	814.7
2166+04.8	2171+69.0	LT IS	EDGE LINE	565.2
2166+04.8	2171+69.0	RT IS	EDGE LINE	567.2
FAP 63 (US 24) - STP FUNDING				
2171+69.0	2188+43.3	LT OS	EDGE LINE	1527.4
2171+69.0	2188+43.3	RT OS	EDGE LINE	1506.2
2171+69.0	2177+34.8	LT IS	EDGE LINE	568.8
2171+69.0	2177+34.8	RT IS	EDGE LINE	570.9
2178+18.9	2186+00.0	LT IS	EDGE LINE	785.4
2178+18.9	2186+00.0	RT IS	EDGE LINE	786.9
2186+00.0	2188+43.3	CL	NO-PASSING	493.2
RAMP A - NHS FUNDING				
19+61.1	20+51.3	LT & RT	EDGE LINE	154.3
RAMP B - NHS FUNDING				
0+23.1	1+79.3	LT & RT	EDGE LINE	164.1
RAMP C - STP FUNDING				
22+12.6	23+41.2	LT & RT	EDGE LINE	214.9
RAMP D - STP FUNDING				
0+23.8	1+16.7	LT & RT	EDGE LINE	94.8
TOTALS				6769.0
USE				7049.0
				13818

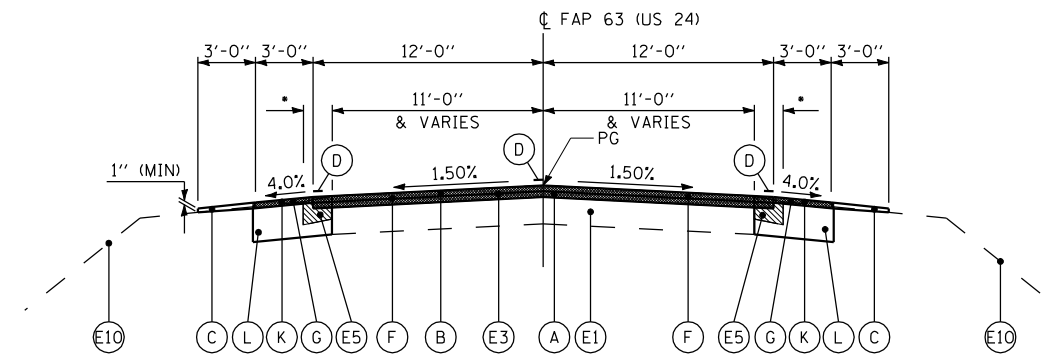
RAISED REFLECTIVE PAVEMENT MARKERS

78100100

STATION TO STATION	SIDE	MAXIMUM SPACING	1-WAY	1-WAY	2-WAY
			AMBER	CRYSTAL	AMBER
EACH					
FAP 63 (US 24) - NHS FUNDING					
2154+49.68	2156+20.00	CL	80		1
2156+20.00	2157+00.00	LT CL	40		3
2156+20.00	2157+00.00	RT CL	40		3
2157+00.00	2158+48.71	LT CL	40		4
2157+00.00	2158+48.71	RT CL	40		4
2158+48.71	2165+11.30	LT	40	17	
2158+48.71	2165+11.30	RT	40	17	
2165+11.30	2165+11.30	RT	N/A	3	
2166+04.81	2166+04.81	LT	N/A	3	
2166+04.81	2168+16.92	LT	40	6	6
2166+04.81	2168+16.92	RT	40	6	
FAP 63 (US 24) - STP FUNDING					
2175+21.08	2177+34.83	LT	40	6	
2175+21.08	2177+34.83	RT	40	6	6
2177+34.83	2177+34.83	LT	N/A	3	
2178+18.86	2178+18.86	LT	N/A	3	
2178+18.86	2184+59.84	LT	40	17	
2178+18.86	2184+59.84	RT	40	17	
2184+59.84	2186+00.00	LT CL	40		4
2184+59.84	2186+00.00	RT CL	40		4
2186+00.00	2186+80.00	LT CL	40		3
2186+00.00	2186+80.00	RT CL	40		3
2186+80.00	2188+43.33	CL	80		1
TOTALS				104	12
USE					30
					146

ESTIMATED STRIPING QUANTITIES

PAY ITEM NUMBER	PAY ITEM	UNIT	QUANTITY	LOCATION/REASON
70103815	TRAFFIC CONTROL SURVEILLANCE	CAL DA	10	AS REQUIRED FOR DROP-OFFS
70300100	SHORT-TERM PAVEMENT MARKING	FOOT	1104	TEMPORARY STRIPING ON BINDER/SURFACE
70300210	TEMPORARY PAVEMENT MARKING - LETTERS & SYMBOLS	SO FT	150	TEMPORARY STRIPING ON BINDER/SURFACE
70300230	TEMPORARY PAVEMENT MARKING - LINE 5"	FOOT	13818	TEMPORARY STRIPING ON BINDER/SURFACE
70300240	TEMPORARY PAVEMENT MARKING - LINE 6"	FOOT	590	TEMPORARY STRIPING ON BINDER/SURFACE
70300250	TEMPORARY PAVEMENT MARKING - LINE 8"	FOOT	380	TEMPORARY STRIPING ON BINDER/SURFACE
70300260	TEMPORARY PAVEMENT MARKING - LINE 12"	FOOT	227	TEMPORARY STRIPING ON BINDER/SURFACE
70300280	TEMPORARY PAVEMENT MARKING - LINE 24"	FOOT	72	TEMPORARY STRIPING ON BINDER/SURFACE
70301000	WORK ZONE PAVEMENT MARKING REMOVAL	SO FT	6950	REMOVE SHORT-TERM/TEMPORARY STRIPING



**TYPICAL FAP 63 (US 24) SECTION**

**NOTES:**

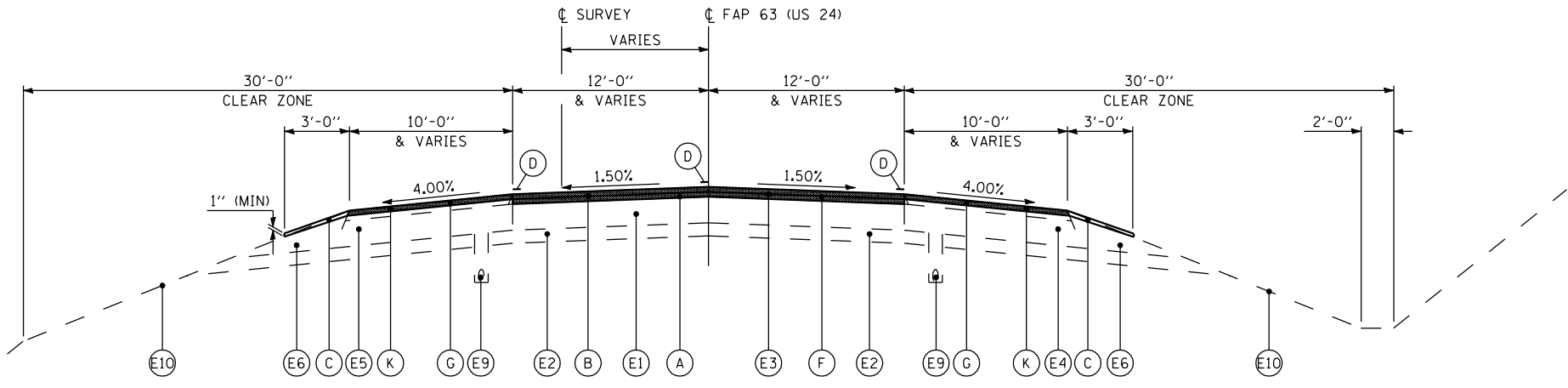
• AND VARIES - SEE PLAN SHEETS

STA 2154+49.68 TO STA 2154+87.72 LT  
 STA 2155+00.00 TO STA 2155+07.00 LT  
 STA 2154+49.68 TO STA 2154+87.72 RT  
 STA 2155+00.00 TO STA 2155+20.00 RT

STATION EQUATION:  
 STA 2154+87.72 BK =  
 STA 2155+00.00 AH

- EXISTING LEGEND**
- (E1) EXISTING PCC PAVEMENT 9"
  - (E2) EXISTING STABILIZED SUB-BASE, 4"
  - (E3) EXISTING HOT-MIX ASPHALT SURFACING, 4"±
  - (E4) EXISTING ASPHALT AGGREGATE MIXTURE SHOULDERS, 8"
  - (E5) EXISTING HOT-MIX ASPHALT SHOULDERS, 8"
  - (E6) EXISTING AGGREGATE SHOULDERS
  - (E7) EXISTING CONCRETE CURB & GUTTER, TYPE M-2.06 / M-6.06
  - (E8) EXISTING CONCRETE MEDIAN SURFACE, 4"
  - (E9) EXISTING PIPE UNDERDRAINS, 4"
  - (E10) EXISTING GROUND
  - EXISTING ITEM TO BE REMOVED

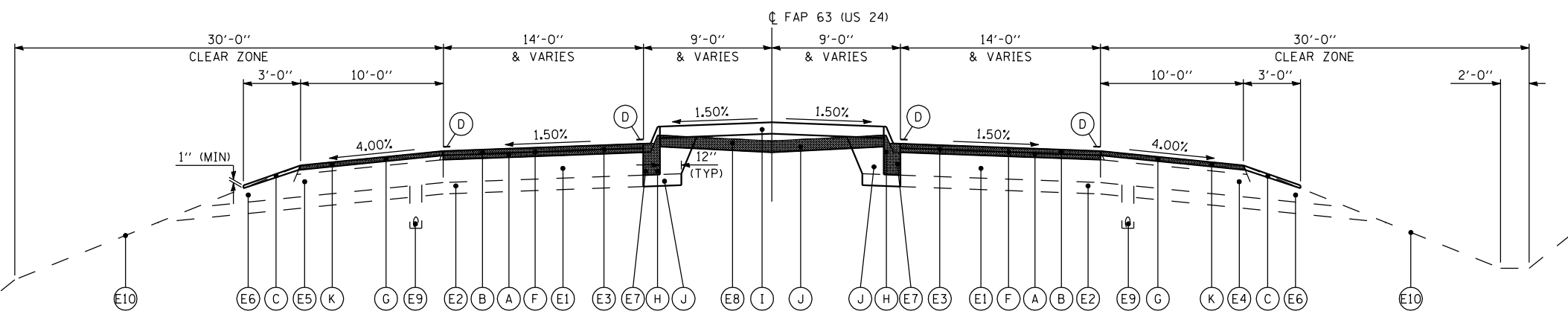
- PROPOSED LEGEND**
- (A) PR HMA BINDER COURSE, 2 1/4"
  - (B) PR HMA SURFACE COURSE, 1 1/2"
  - (C) PR AGGREGATE WEDGE SHOULDERS, TYPE B, VARIABLE DEPTH
  - (D) PR PAVEMENT MARKING (SEE PLAN SHEETS FOR SIZES & TYPES)
  - (F) PR HMA SURFACE REMOVAL, 4" (TO EXISTING BARE PCC PVMT)
  - (G) PR HMA SURFACE REMOVAL, 1 3/4" (TO TOP OF PROPOSED BINDER COURSE)
  - (H) PR COMBINATION CONCRETE CURB & GUTTER, TYPE M-4.06 (SEE PLAN SHEETS FOR LOCATIONS)
  - (I) PR CONCRETE MEDIAN / CONCRETE MEDIAN SURFACE (SEE PLAN SHEETS FOR LOCATIONS)
  - (J) PR SUB-BASE GRANULAR MATERIAL, TYPE B (VARIABLE DEPTH)
  - (K) PR HMA SHOULDERS, 1 1/2"
  - (L) PR PCC BASE COURSE, 13"



**TYPICAL FAP 63 (US 24) SECTION**

STA 2155+07.00 TO STA 2159+78.71 LT  
 STA 2155+20.00 TO STA 2159+78.71 RT  
 STA 2183+29.84 TO STA 2187+00.18  
 STA 2186+96.92 TO STA 2188+43.33

STATION EQUATION:  
 STA 2187+00.18 BK =  
 STA 2186+96.92 AH



**TYPICAL FAP 63 (US 24) SECTION**

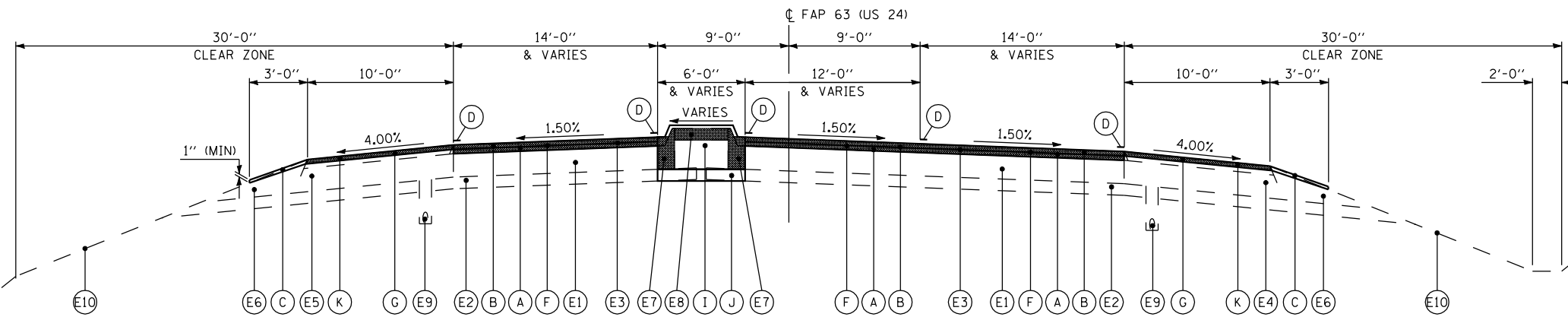
STA 2159+78.71 TO STA 2166+04.81  
 STA 2168+16.92 TO STA 2175+21.08  
 STA 2177+34.82 TO STA 2183+29.84

**EXISTING LEGEND**

- (E1) EXISTING PCC PAVEMENT 9"
- (E2) EXISTING STABILIZED SUB-BASE, 4"
- (E3) EXISTING HOT-MIX ASPHALT SURFACING, 4"±
- (E4) EXISTING ASPHALT AGGREGATE MIXTURE SHOULDERS, 8"
- (E5) EXISTING HOT-MIX ASPHALT SHOULDERS, 8"
- (E6) EXISTING AGGREGATE SHOULDERS
- (E7) EXISTING CONCRETE CURB & GUTTER, TYPE M-2.06 / M-6.06
- (E8) EXISTING CONCRETE MEDIAN SURFACE, 4"
- (E9) EXISTING PIPE UNDERDRAINS, 4"
- (E10) EXISTING GROUND
- EXISTING ITEM TO BE REMOVED

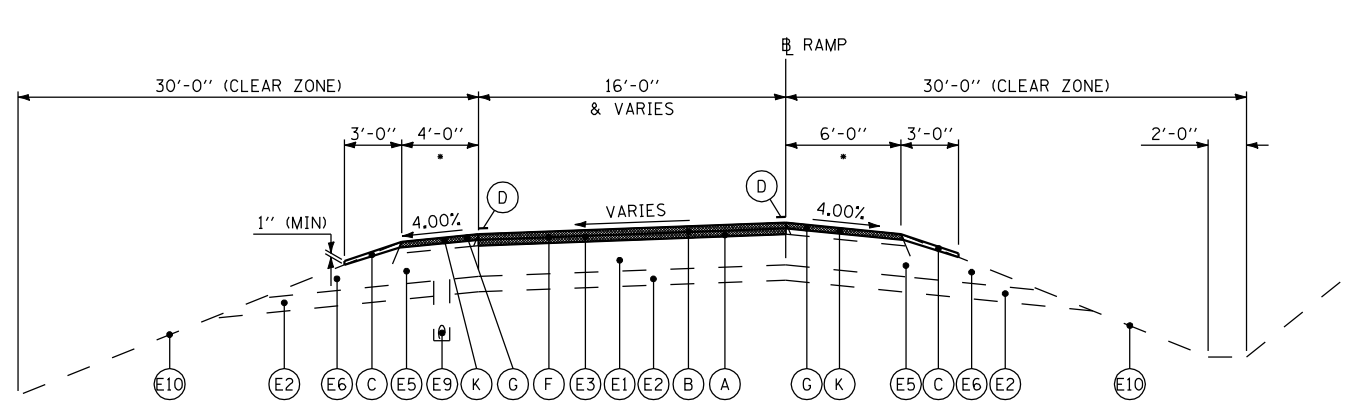
**PROPOSED LEGEND**

- (A) PR HMA BINDER COURSE, 2 1/4"
- (B) PR HMA SURFACE COURSE, 1 1/2"
- (C) PR AGGREGATE WEDGE SHOULDERS, TYPE B, VARIABLE DEPTH
- (D) PR PAVEMENT MARKING (SEE PLAN SHEETS FOR SIZES & TYPES)
- (F) PR HMA SURFACE REMOVAL, 4" (TO EXISTING BARE PCC PAVT)
- (G) PR HMA SURFACE REMOVAL, 1 3/4" (TO TOP OF PROPOSED BINDER COURSE)
- (H) PR COMBINATION CONCRETE CURB & GUTTER, TYPE M-4.06 (SEE PLAN SHEETS FOR LOCATIONS)
- (I) PR CONCRETE MEDIAN / CONCRETE MEDIAN SURFACE (SEE PLAN SHEETS FOR LOCATIONS)
- (J) PR SUB-BASE GRANULAR MATERIAL, TYPE B (VARIABLE DEPTH)
- (K) PR HMA SHOULDERS, 1 1/2"
- (L) PR PCC BASE COURSE, 13"



**TYPICAL FAP 63 (US 24) SECTION**

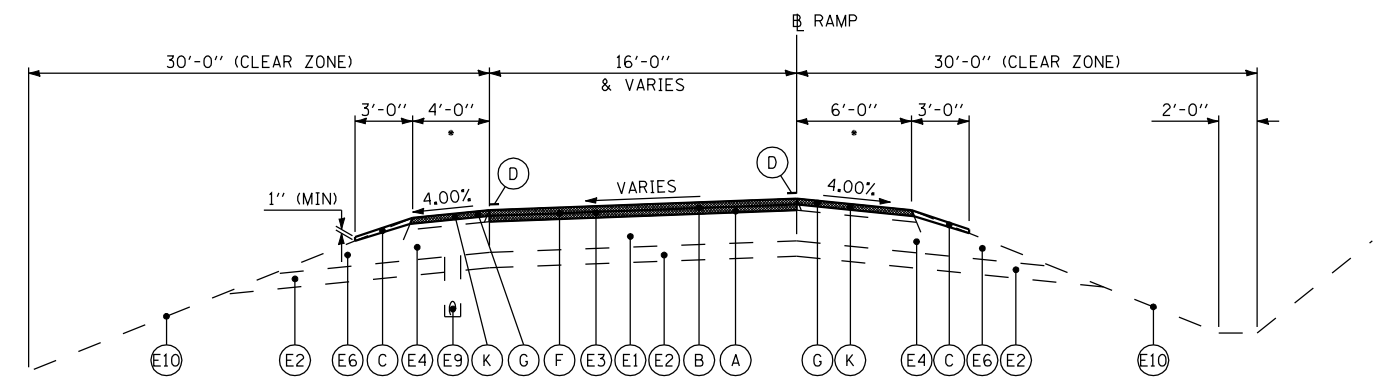
STA 2166+04.81 TO STA 2168+16.92  
 STA 2175+21.08 TO STA 2177+34.82



**TYPICAL RAMP SECTION**

STA 19+61.12 TO STA 20+51.29 (RAMP A)  
 STA 0+23.80 TO STA 1+16.69 (RAMP D)

NOTES:  
 • AND VARIES - SEE PLAN SHEETS



**TYPICAL RAMP SECTION**

STA 0+23.09 TO STA 1+79.31 (RAMP B)  
 STA 22+12.58 TO STA 23+41.24 (RAMP C)

NOTES:  
 • AND VARIES - SEE PLAN SHEETS

FILE NAME =	USER NAME = ebb	DESIGNED -	REVISED -
qa:\08files\080224\wo 2 - us 24 over frazier creek - roadway plans\us 24 & 1-172\code		DRAWN	REVISED -
		CHECKED -	REVISED -
		DATE -	REVISED -

**STATE OF ILLINOIS  
 DEPARTMENT OF TRANSPORTATION**

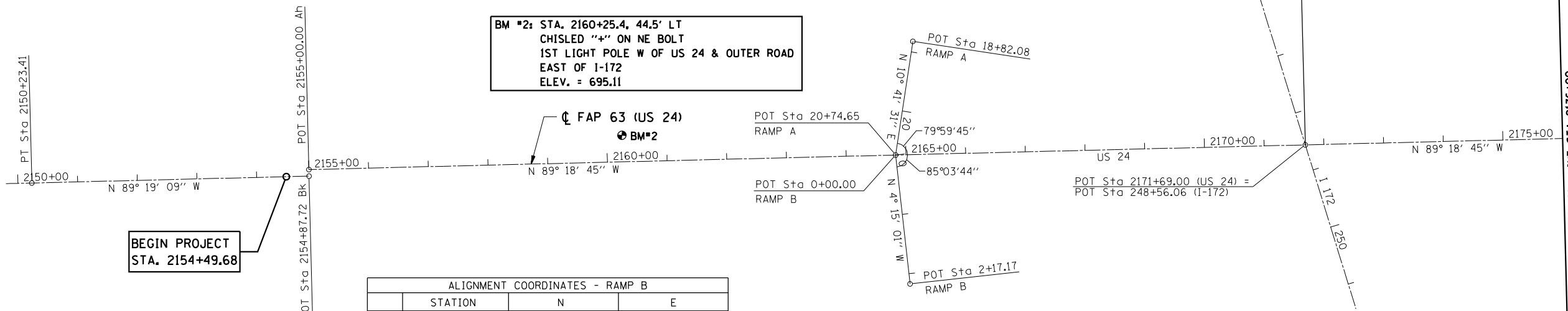
**TYPICAL SECTIONS**

SCALE: none SHEET NO. 2 OF 2 SHEETS STA. TO STA.

F.A.P. RTE.	SECTION	COUNTY	TOTAL SHEETS	SHEET NO.
63	(I)RS-6	ADAMS	24	14
CONTRACT NO. 72F76				
FED. ROAD DIST. NO. 6 ILLINOIS FED. AID PROJECT				

ALIGNMENT COORDINATES - RAMP A			
	STATION	N	E
POT	18+82.08	1,218,492.5110	1,977,350.7300
POT	20+74.65	1,218,681.7380	1,977,386.4570

**BM #2: STA. 2160+25.4, 44.5' LT  
CHISLED "+" ON NE BOLT  
1ST LIGHT POLE W OF US 24 & OUTER ROAD  
EAST OF I-172  
ELEV. = 695.11**



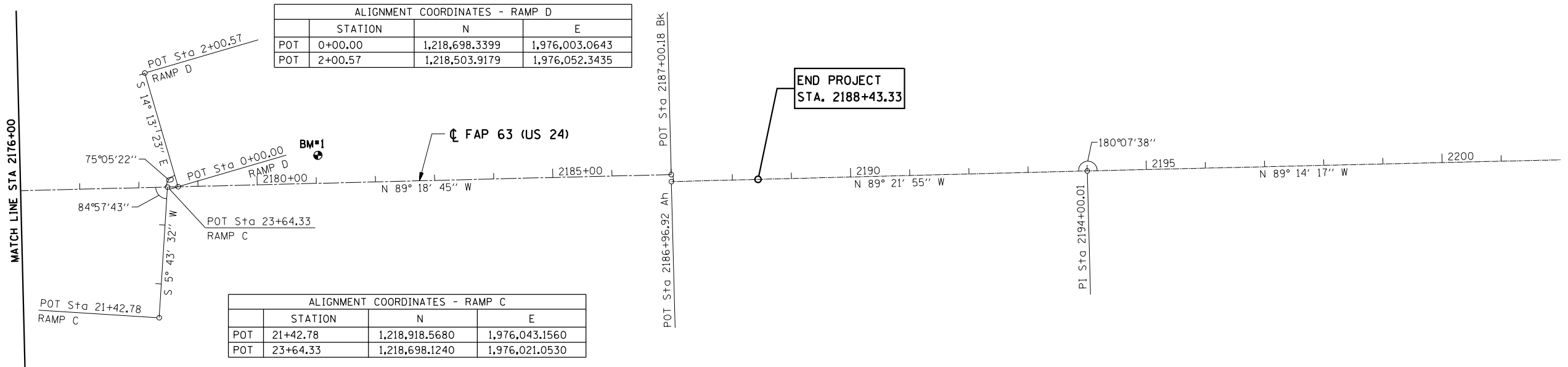
**BEGIN PROJECT  
STA. 2154+49.68**

ALIGNMENT COORDINATES - RAMP B			
	STATION	N	E
POT	0+00.00	1,218,681.7380	1,977,386.4570
POT	2+17.17	1,218,898.3100	1,977,370.3620

ALIGNMENT COORDINATES - FAP 63 (US 24)			
	STATION	N	E
PT	2150+23.41	1,218,675.3559	1,978,833.6692
POT	2154+87.72 Bk	1,218,680.8723	1,978,369.3875
POT	2155+00.00 Ah	1,218,669.9430	1,978,369.2660
POT	2187+00.18 Bk	1,218,708.3460	1,975,169.3140
POT	2186+96.92 Ah	1,218,720.2583	1,975,169.4570
PI	2194+00.01	1,218,728.0474	1,974,466.4139

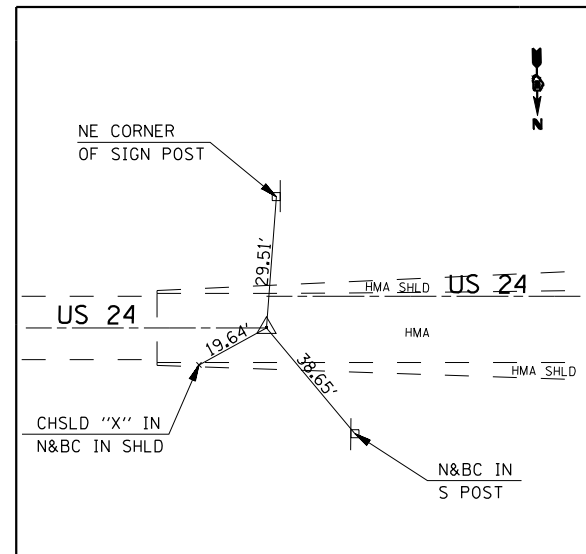
**BM #1: STA. 2181+03.8, 47.4' LT  
CHISLED "+" ON NW BOLT  
1ST LIGHT POLE W OF CONC CULVERT  
WEST SIDE OF I-172 & US 24  
ELEV. = 676.78**

ALIGNMENT COORDINATES - RAMP D			
	STATION	N	E
POT	0+00.00	1,218,698.3399	1,976,003.0643
POT	2+00.57	1,218,503.9179	1,976,052.3435

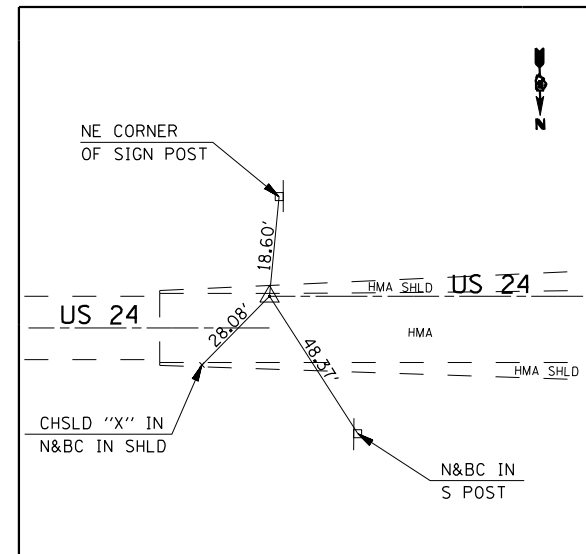


**END PROJECT  
STA. 2188+43.33**

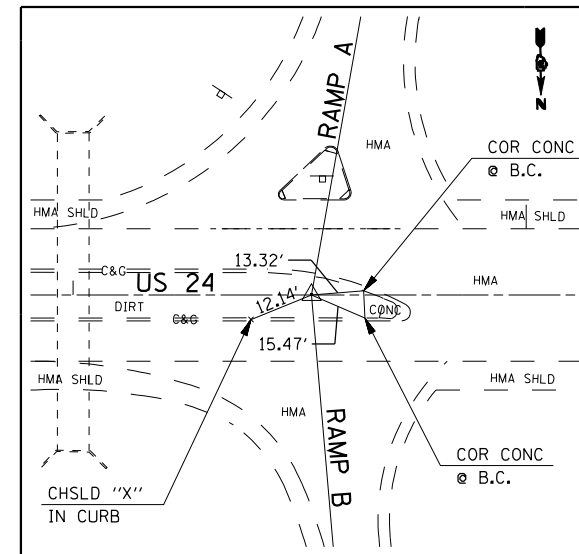
ALIGNMENT COORDINATES - RAMP C			
	STATION	N	E
POT	21+42.78	1,218,918.5680	1,976,043.1560
POT	23+64.33	1,218,698.1240	1,976,021.0530



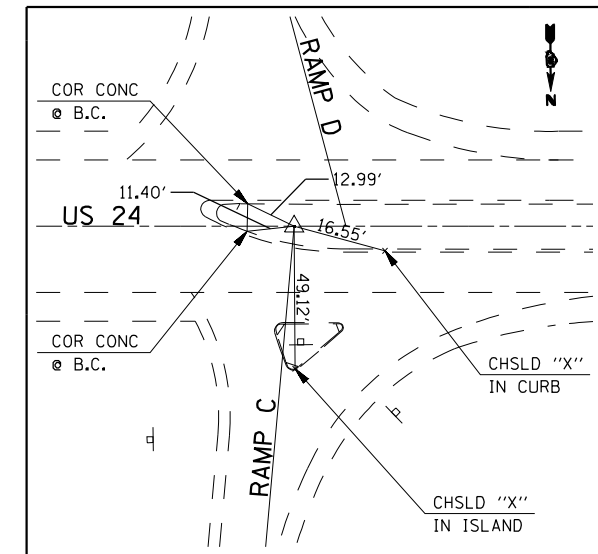
P.O.T. STA. 2154+87.72  
(SET PK W/CHSLD "X")



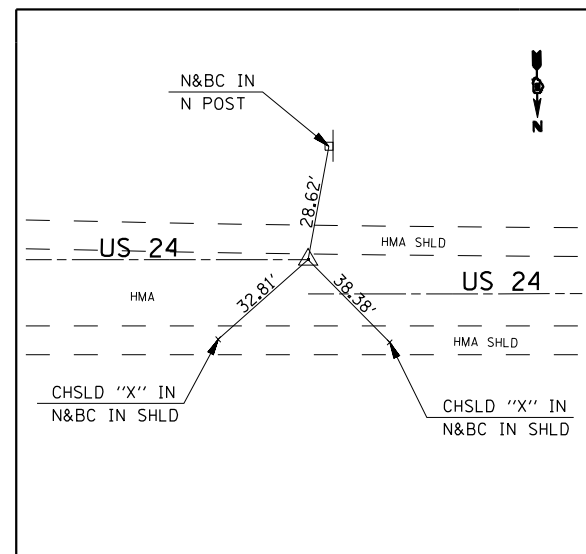
P.O.T. STA. 2155+00.00  
(SET PK W/CHSLD "X")



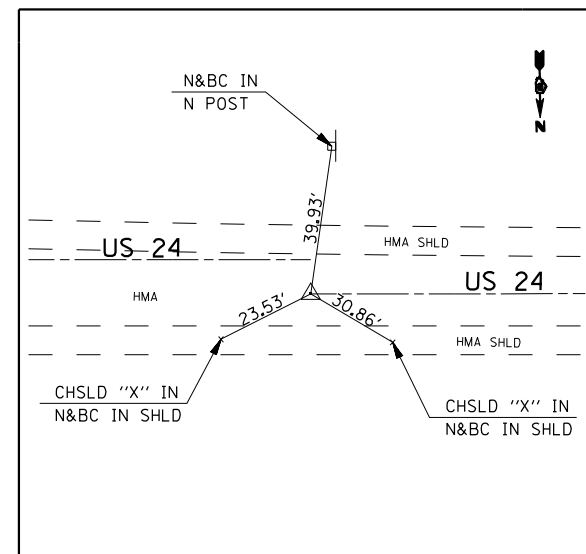
P.O.T. STA. 2164+82.88  
(BURIED #5 REBAR W/CAP)



P.O.T. STA. 2178+48.38  
(FLUSH #5 REBAR W/CAP)



P.O.T. STA. 2187+00.18  
(SET PK W/CHSLD "X")



P.O.T. STA. 2186+96.92  
(SET PK W/CHSLD "X")

FILE NAME =	USER NAME = ebb	DESIGNED -	REVISED -
qa\08files\080224\wo 2 - us 24 over frazier creek - roadway plans\us 24 & i-172\code\DRAWING\0672F76-shd-Control Ties.dgn		DRAWN -	REVISED -
	PLOT SCALE = 200.0000' / IN.	CHECKED -	REVISED -
	PLOT DATE = 10/16/2012	DATE -	REVISED -

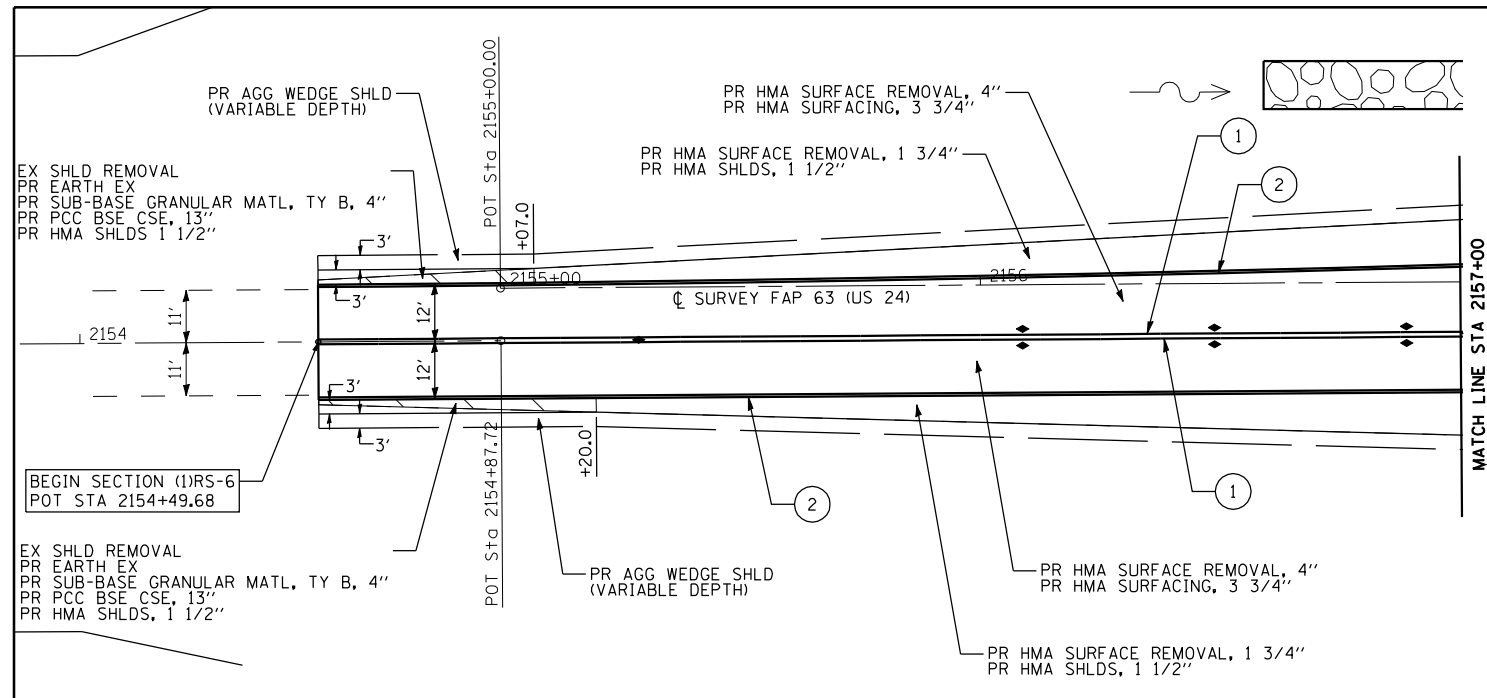
**STATE OF ILLINOIS  
DEPARTMENT OF TRANSPORTATION**

**HORIZONTAL CONTROL TIES**

SCALE: none SHEET NO. 1 OF 1 SHEETS STA. TO STA.

F.A.P. RTE.	SECTION	COUNTY	TOTAL SHEETS	SHEET NO.
63	(1)RS-6	ADAMS	24	16
<b>CONTRACT NO. 72F76</b>				
<small>FED. ROAD DIST. NO. 6 ILLINOIS FED. AID PROJECT</small>				



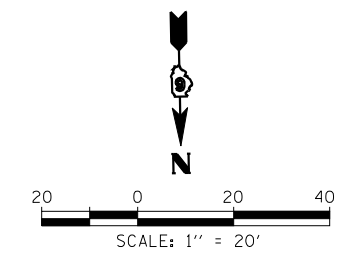
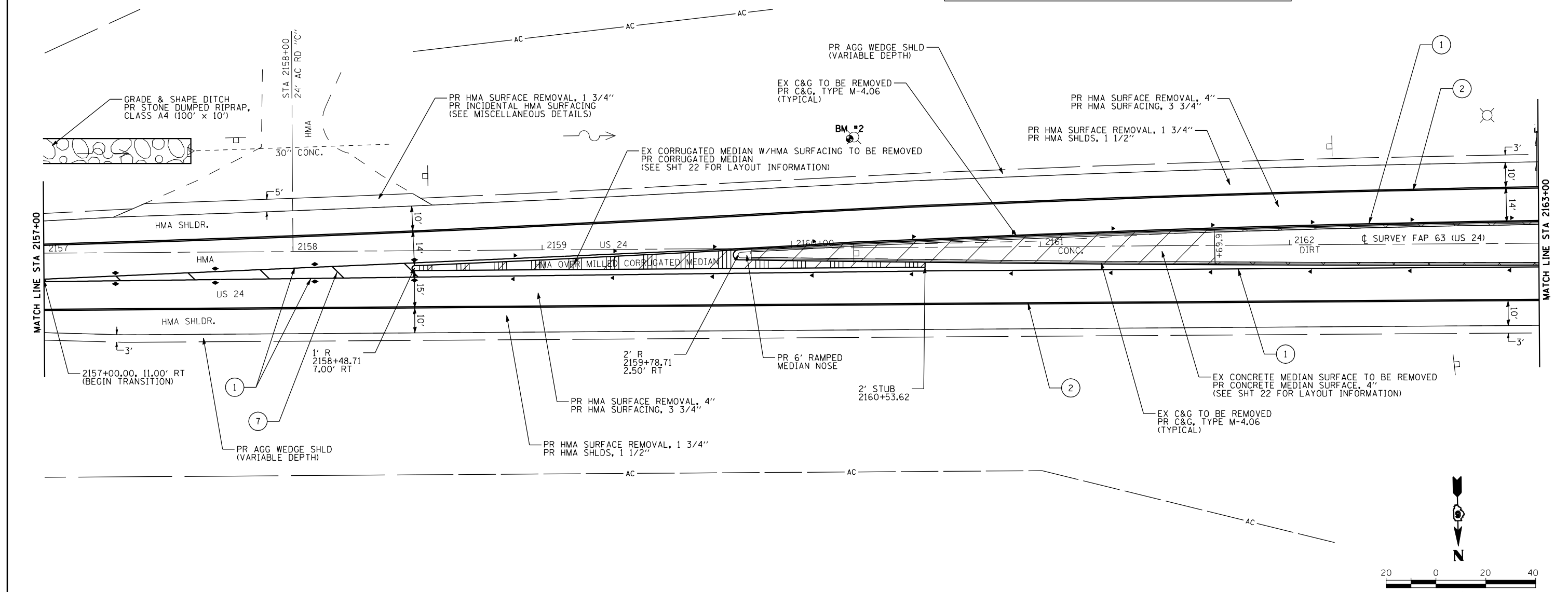


**PAVEMENT MARKING LEGEND**

- ① PR MODIFIED URETHANE PAVEMENT MARKING, LINE 5" (SOLID YELLOW)
- ② PR MODIFIED URETHANE PAVEMENT MARKING, LINE 5" (SOLID WHITE)
- ③ PR MODIFIED URETHANE PAVEMENT MARKING, LINE 6" (SOLID WHITE)
- ④ PR MODIFIED URETHANE PAVEMENT MARKING, LINE 6" (6' SKIP, 2' DASH WHITE)
- ⑤ PR MODIFIED URETHANE PAVEMENT MARKING, LINE 8" (SOLID WHITE)
- ⑥ PR MODIFIED URETHANE PAVEMENT MARKING, LINE 12" (SOLID WHITE) (15' TYP SPACING)
- ⑦ PR MODIFIED URETHANE PAVEMENT MARKING, LINE 12" (SOLID YELLOW) (30' TYP SPACING)
- ⑧ PR PREFORMED PLASTIC PAVEMENT MARKING, TYPE B (INLAID), LINE 24" (SOLID WHITE) (15' FROM EOP)
- ⑨ PR PREFORMED PLASTIC PAVEMENT MARKING, TYPE B (INLAID), LETTERS AND SYMBOLS (SOLID WHITE)
- ▷ PR RAISED REFLECTIVE PAVEMENT MARKERS, ONE-WAY CRYSTAL
- ▶ PR RAISED REFLECTIVE PAVEMENT MARKERS, ONE-WAY AMBER
- ◆ PR RAISED REFLECTIVE PAVEMENT MARKERS, TWO-WAY AMBER

**BM #2: STA. 2160+25.4, 44.5' LT**  
 CHISELED "+\" ON NE BOLT  
 1ST LIGHT POLE W OF US 24 & OUTER ROAD  
 EAST OF I-172  
 ELEV. = 695.11

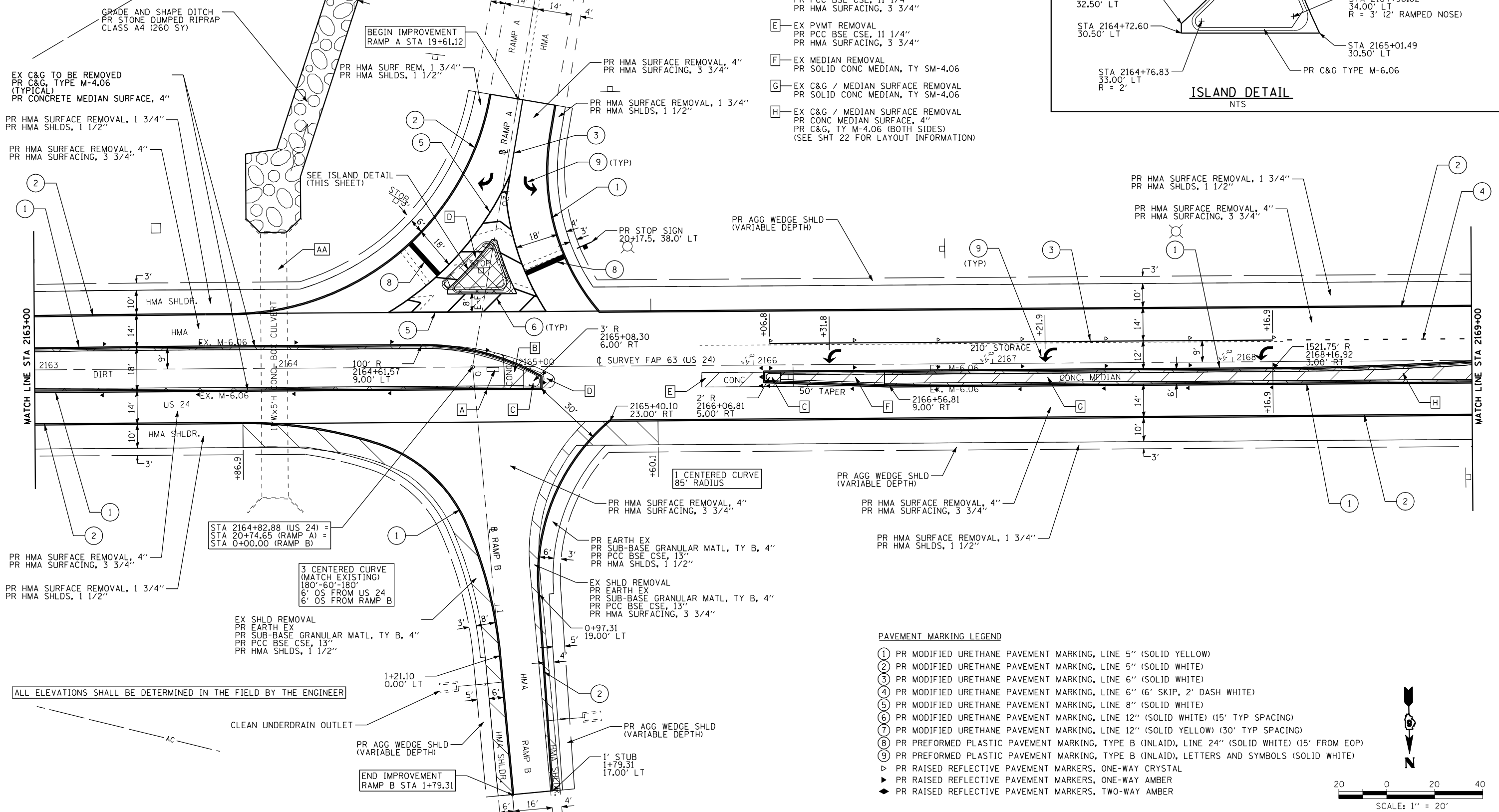
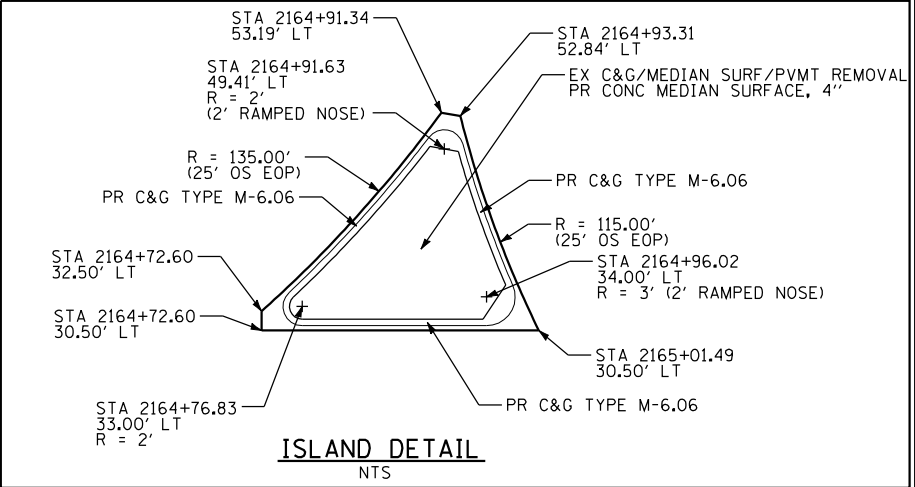
ALL ELEVATIONS SHALL BE DETERMINED IN THE FIELD BY THE ENGINEER



FILE NAME =	USER NAME = ebb	DESIGNED -	REVISED -	<b>STATE OF ILLINOIS DEPARTMENT OF TRANSPORTATION</b>	<b>PLAN SHEET</b>	F.A.P. RTE.	SECTION	COUNTY	TOTAL SHEETS	SHEET NO.
q:\08files\080224\wo 2 - us 24 over frazier creek - roadway plans\us 24 & i-172\code\DRAWN\0672F76-shr-plan01.dgn		CHECKED -	REVISED -			63	(1)RS-6	ADAMS	24	17
PLOT SCALE = 40.0000 "/>										
PLOT DATE = 10/16/2012	DATE -	REVISED -	SCALE: 1"=20'			SHEET NO. 1 OF 5 SHEETS	STA. 2154+00 TO STA. 2163+00	<b>CONTRACT NO. 72F76</b>		

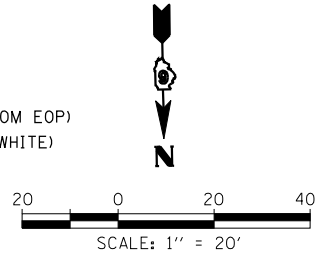
AA— STA 2164+00 (S.N. 001-7065)  
EX 11' x 5' RCBC  
(NO IMPROVEMENTS)

- A— STA 2164+91.3, 1.1' RT  
REMOVE EX INLET  
PLUG EX CULVERT
- B— EX C&G / MEDIAN SURFACE REMOVAL  
PR CONC MEDIAN SURFACE, 4"  
PR C&G, TY M-4.06 (BOTH SIDES)
- C— EX MEDIAN REMOVAL  
PR SOLID CONC MEDIAN, TY SM-4.06 (6' RAMPED NOSE)
- D— EX MEDIAN REMOVAL  
PR PCC BSE CSE, 11 1/4"  
PR HMA SURFACING, 3 3/4"
- E— EX PVMT REMOVAL  
PR PCC BSE CSE, 11 1/4"  
PR HMA SURFACING, 3 3/4"
- F— EX MEDIAN REMOVAL  
PR SOLID CONC MEDIAN, TY SM-4.06
- G— EX C&G / MEDIAN SURFACE REMOVAL  
PR SOLID CONC MEDIAN, TY SM-4.06
- H— EX C&G / MEDIAN SURFACE REMOVAL  
PR CONC MEDIAN SURFACE, 4"  
PR C&G, TY M-4.06 (BOTH SIDES)  
(SEE SHT 22 FOR LAYOUT INFORMATION)



ALL ELEVATIONS SHALL BE DETERMINED IN THE FIELD BY THE ENGINEER

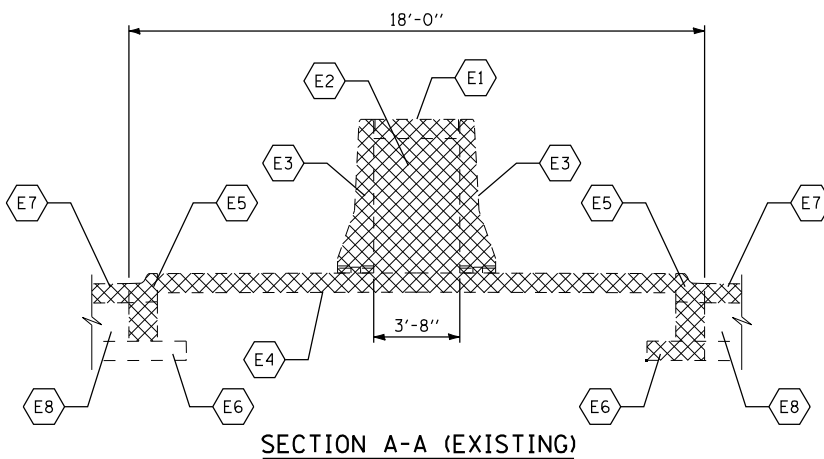
- PAVEMENT MARKING LEGEND**
- ① PR MODIFIED URETHANE PAVEMENT MARKING, LINE 5" (SOLID YELLOW)
  - ② PR MODIFIED URETHANE PAVEMENT MARKING, LINE 5" (SOLID WHITE)
  - ③ PR MODIFIED URETHANE PAVEMENT MARKING, LINE 6" (SOLID WHITE)
  - ④ PR MODIFIED URETHANE PAVEMENT MARKING, LINE 6" (6' SKIP, 2' DASH WHITE)
  - ⑤ PR MODIFIED URETHANE PAVEMENT MARKING, LINE 8" (SOLID WHITE)
  - ⑥ PR MODIFIED URETHANE PAVEMENT MARKING, LINE 12" (SOLID WHITE) (15' TYP SPACING)
  - ⑦ PR MODIFIED URETHANE PAVEMENT MARKING, LINE 12" (SOLID YELLOW) (30' TYP SPACING)
  - ⑧ PR PREFORMED PLASTIC PAVEMENT MARKING, TYPE B (INLAID), LINE 24" (SOLID WHITE) (15' FROM EOP)
  - ⑨ PR PREFORMED PLASTIC PAVEMENT MARKING, TYPE B (INLAID), LETTERS AND SYMBOLS (SOLID WHITE)
  - ▷ PR RAISED REFLECTIVE PAVEMENT MARKERS, ONE-WAY CRYSTAL
  - ▶ PR RAISED REFLECTIVE PAVEMENT MARKERS, ONE-WAY AMBER
  - ◆ PR RAISED REFLECTIVE PAVEMENT MARKERS, TWO-WAY AMBER



FILE NAME =	USER NAME = ebb	DESIGNED -	REVISED -	<b>STATE OF ILLINOIS DEPARTMENT OF TRANSPORTATION</b>	<b>PLAN SHEET</b>	F.A.P. RTE.	SECTION	COUNTY	TOTAL SHEETS	SHEET NO.
q:\08files\080224\wo 2 - us 24 over frazier creek - roadway plans\us 24 & 1-172\code\DRAWN\0672F76-sht-plan02.dgn		CHECKED -	REVISED -			63	(1)RS-6	ADAMS	24	18
PLOT SCALE = 40.0000' / IN.		DATE -	REVISED -			CONTRACT NO. 72F76				
PLOT DATE = 10/16/2012						FED. ROAD DIST. NO. 6 ILLINOIS FED. AID PROJECT				

EXISTING

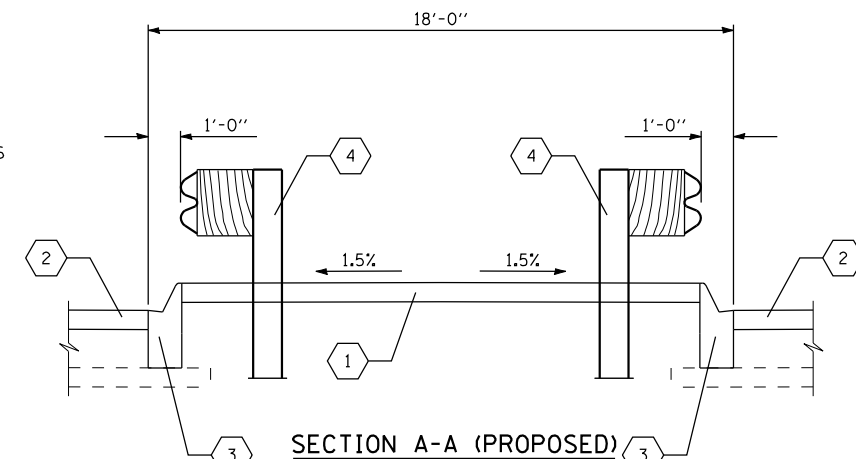
- E1 EXISTING 4" CONCRETE CAP TO BE REMOVED COST INCLUDED IN CONCRETE BARRIER REMOVAL
- E2 EXISTING CA-11 TO BE REMOVED COST INCLUDED IN CONCRETE BARRIER REMOVAL
- E3 EXISTING CONCRETE BARRIER, SINGLE FACE, 32" HEIGHT TO BE REMOVED
- E4 EXISTING CONCRETE MEDIAN SURFACE, 4" TO BE REMOVED
- E5 EXISTING COMBINATION CONCRETE CURB & GUTTER, TYPE M-2.06 TO BE REMOVED
- E6 EXISTING SUB-BASE GRANULAR MATERIAL, TYPE A, 4"
- E7 EXISTING HMA SURFACING, TO BE REMOVED
- E8 EXISTING PCC PVMT, 9"



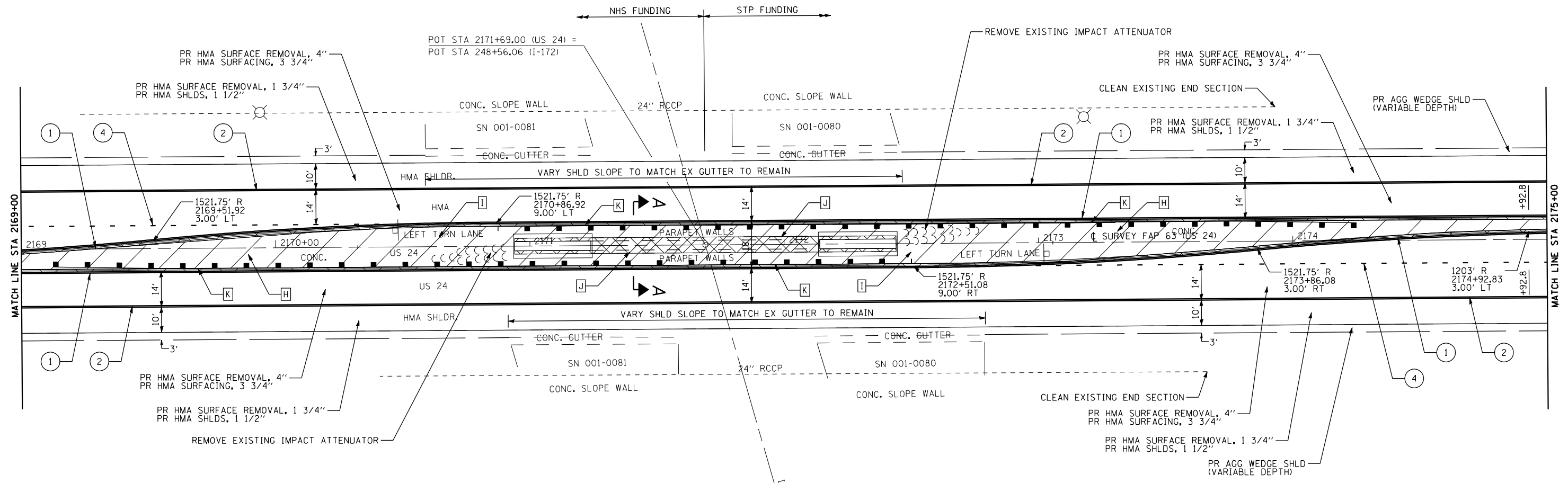
SECTION A-A (EXISTING)

PROPOSED

- 1 CONCRETE MEDIAN SURFACE, 4"
- 2 HMA SURFACING, 3 3/4"
- 3 COMBINATION CONCRETE CURB & GUTTER, TYPE M-4.06 (STD 606001)
- 4 GUARDRAIL (SEE SCHEDULE)



SECTION A-A (PROPOSED)

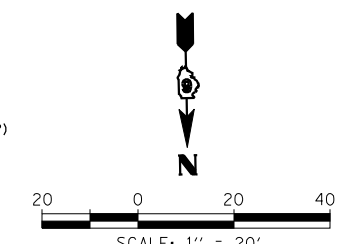


- H— EX C&G / MEDIAN SURFACE REMOVAL  
PR CONC MEDIAN SURFACE, 4"  
PR C&G, TY M-4.06 (BOTH SIDES)  
(SEE SHT 22 FOR LAYOUT INFORMATION)
- I— EX C&G / MEDIAN SURFACE REMOVAL  
PR CONC MEDIAN SURFACE, 4"  
PR C&G, TY M-4.06 (BOTH SIDES)
- J— EX C&G / MEDIAN SURFACE / BARRIER WALL REMOVAL  
PR CONC MEDIAN SURFACE, 4"  
PR C&G, TY M-4.06 (BOTH SIDES)  
(SEE SECTION A-A ON THIS SHT)
- K— PR GUARDRAIL (SEE SCHEDULES)

ALL ELEVATIONS SHALL BE DETERMINED IN THE FIELD BY THE ENGINEER

PAVEMENT MARKING LEGEND

- ① PR MODIFIED URETHANE PAVEMENT MARKING, LINE 5" (SOLID YELLOW)
- ② PR MODIFIED URETHANE PAVEMENT MARKING, LINE 5" (SOLID WHITE)
- ③ PR MODIFIED URETHANE PAVEMENT MARKING, LINE 6" (SOLID WHITE)
- ④ PR MODIFIED URETHANE PAVEMENT MARKING, LINE 6" (6' SKIP, 2' DASH WHITE)
- ⑤ PR MODIFIED URETHANE PAVEMENT MARKING, LINE 8" (SOLID WHITE)
- ⑥ PR RAISED REFLECTIVE PAVEMENT MARKERS, LINE 12" (SOLID WHITE) (15' TYP SPACING)
- ⑦ PR MODIFIED URETHANE PAVEMENT MARKING, LINE 12" (SOLID YELLOW) (30' TYP SPACING)
- ⑧ PR PREFORMED PLASTIC PAVEMENT MARKING, TYPE B (INLAID), LINE 24" (SOLID WHITE) (15' FROM EOP)
- ⑨ PR PREFORMED PLASTIC PAVEMENT MARKING, TYPE B (INLAID), LETTERS AND SYMBOLS (SOLID WHITE)
- ▷ PR RAISED REFLECTIVE PAVEMENT MARKERS, ONE-WAY CRYSTAL
- ▶ PR RAISED REFLECTIVE PAVEMENT MARKERS, ONE-WAY AMBER
- ◀ PR RAISED REFLECTIVE PAVEMENT MARKERS, TWO-WAY AMBER



FILE NAME =	USER NAME = ebb	DESIGNED -	REVISED -
qa:\08files\080224\wo 2 - us 24 over frazier creek - roadway plans\us 24 & i-172\code		DRAWN D672F76-sht-plan03.dgn	REVISED -
	PLOT SCALE = 40:0.0000 ' / IN.	CHECKED -	REVISED -
	PLOT DATE = 10/16/2012	DATE -	REVISED -

STATE OF ILLINOIS  
DEPARTMENT OF TRANSPORTATION

PLAN SHEET

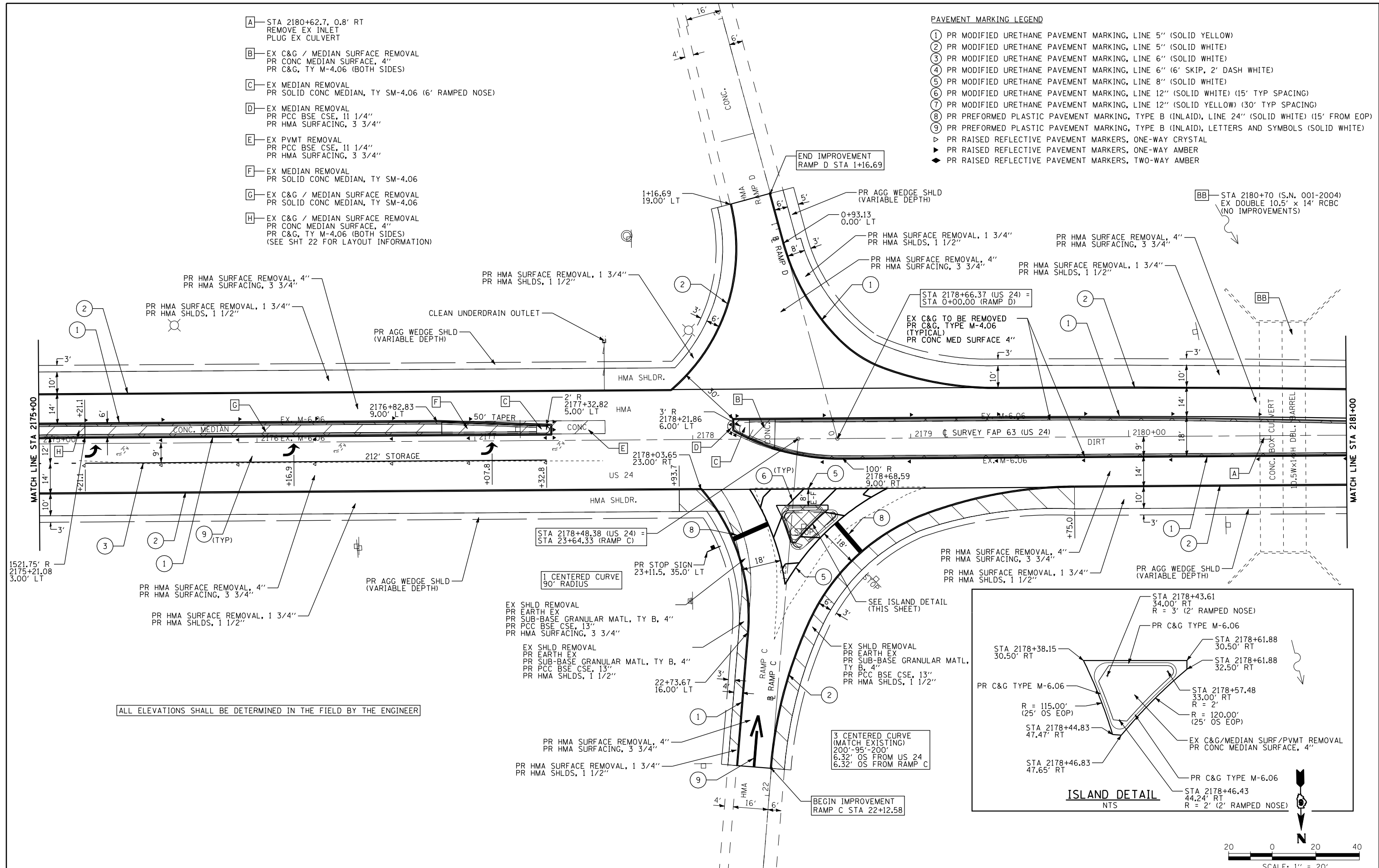
SCALE: 1"=20' SHEET NO. 3 OF 5 SHEETS STA. 2169+00 TO STA. 2175+00

F.A.P. RTE.	SECTION	COUNTY	TOTAL SHEETS	SHEET NO.
63	(I)RS-6	ADAMS	24	19
CONTRACT NO. 72F76				
FED. ROAD DIST. NO. 6 ILLINOIS FED. AID PROJECT				

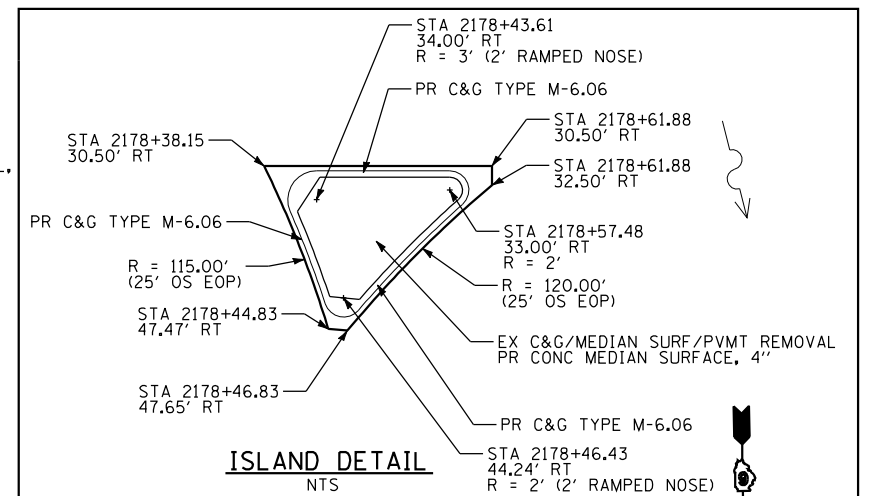
- A— STA 2180+62.7, 0.8' RT  
REMOVE EX INLET  
PLUG EX CULVERT
- B— EX C&G / MEDIAN SURFACE REMOVAL  
PR CONC MEDIAN SURFACE, 4"  
PR C&G, TY M-4.06 (BOTH SIDES)
- C— EX MEDIAN REMOVAL  
PR SOLID CONC MEDIAN, TY SM-4.06 (6' RAMPED NOSE)
- D— EX MEDIAN REMOVAL  
PR PCC BSE CSE, 11 1/4"  
PR HMA SURFACING, 3 3/4"
- E— EX PVMT REMOVAL  
PR PCC BSE CSE, 11 1/4"  
PR HMA SURFACING, 3 3/4"
- F— EX MEDIAN REMOVAL  
PR SOLID CONC MEDIAN, TY SM-4.06
- G— EX C&G / MEDIAN SURFACE REMOVAL  
PR SOLID CONC MEDIAN, TY SM-4.06
- H— EX C&G / MEDIAN SURFACE REMOVAL  
PR CONC MEDIAN SURFACE, 4"  
PR C&G, TY M-4.06 (BOTH SIDES)  
(SEE SHT 22 FOR LAYOUT INFORMATION)

**PAVEMENT MARKING LEGEND**

- ① PR MODIFIED URETHANE PAVEMENT MARKING, LINE 5" (SOLID YELLOW)
- ② PR MODIFIED URETHANE PAVEMENT MARKING, LINE 5" (SOLID WHITE)
- ③ PR MODIFIED URETHANE PAVEMENT MARKING, LINE 6" (SOLID WHITE)
- ④ PR MODIFIED URETHANE PAVEMENT MARKING, LINE 6" (6' SKIP, 2' DASH WHITE)
- ⑤ PR MODIFIED URETHANE PAVEMENT MARKING, LINE 8" (SOLID WHITE)
- ⑥ PR MODIFIED URETHANE PAVEMENT MARKING, LINE 12" (SOLID WHITE) (15' TYP SPACING)
- ⑦ PR MODIFIED URETHANE PAVEMENT MARKING, LINE 12" (SOLID YELLOW) (30' TYP SPACING)
- ⑧ PR PREFORMED PLASTIC PAVEMENT MARKING, TYPE B (INLAID), LINE 24" (SOLID WHITE) (15' FROM EOP)
- ⑨ PR PREFORMED PLASTIC PAVEMENT MARKING, TYPE B (INLAID), LETTERS AND SYMBOLS (SOLID WHITE)
- ▷ PR RAISED REFLECTIVE PAVEMENT MARKERS, ONE-WAY CRYSTAL
- ▶ PR RAISED REFLECTIVE PAVEMENT MARKERS, ONE-WAY AMBER
- ◆ PR RAISED REFLECTIVE PAVEMENT MARKERS, TWO-WAY AMBER



ALL ELEVATIONS SHALL BE DETERMINED IN THE FIELD BY THE ENGINEER



FILE NAME =	USER NAME = ebb	DESIGNED -	REVISED -
qa\08files\080224\wo 2 - us 24 over frazier creek - roadway plans\us 24 & i-172\code		DRAWN 0672F76-shr-plan04.dgn	REVISED -
PLOT SCALE = 40.0000' / IN.	CHECKED -		REVISED -
PLOT DATE = 10/16/2012	DATE -		REVISED -

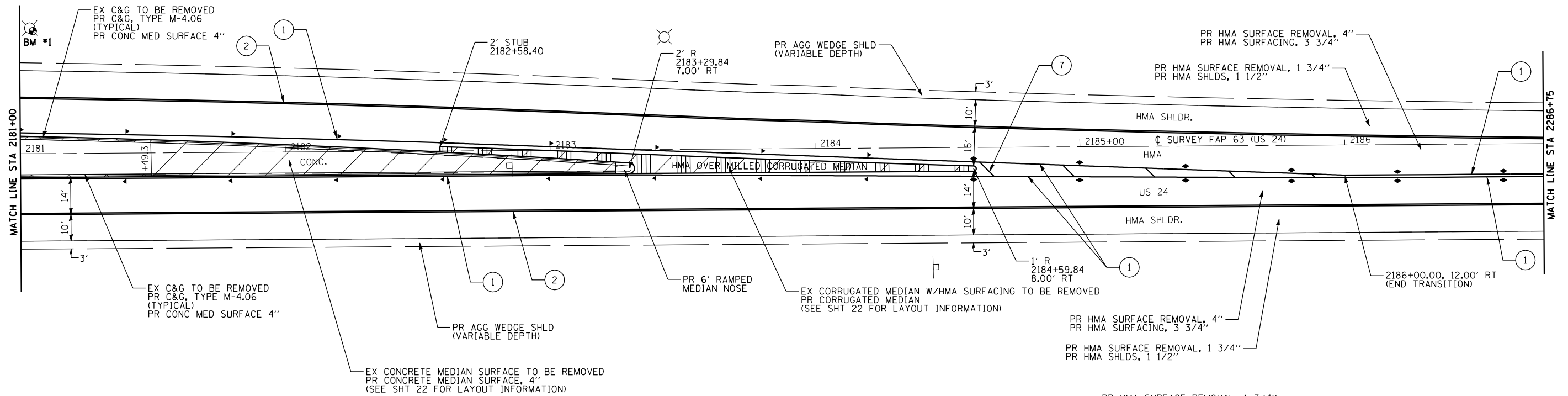
**STATE OF ILLINOIS  
DEPARTMENT OF TRANSPORTATION**

**PLAN SHEET**

SCALE: 1"=20' SHEET NO. 4 OF 5 SHEETS STA. 2175+00 TO STA. 2181+00

F.A.P. RTE.	SECTION	COUNTY	TOTAL SHEETS	SHEET NO.
63	(I)RS-6	ADAMS	24	20
CONTRACT NO. 72F76				
FED. ROAD DIST. NO. 6 ILLINOIS FED. AID PROJECT				

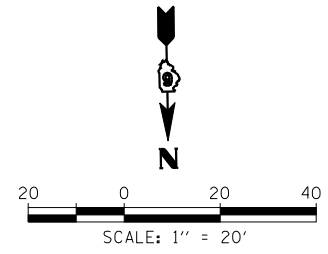
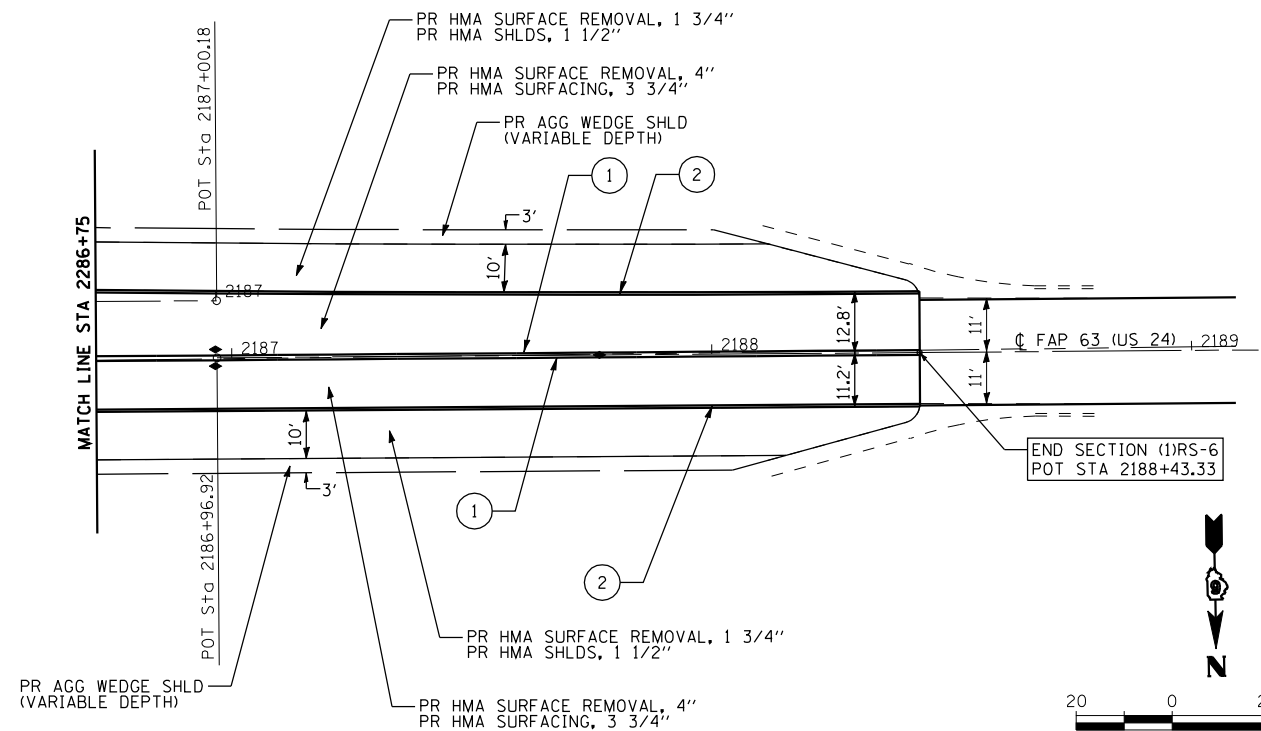
BM #1: STA. 2181+03.8, 47.4' LT  
 CHISLED "X" ON NW BOLT  
 1ST LIGHT POLE W OF CONC CULVERT  
 WEST SIDE OF I-172 & US 24  
 ELEV. = 676.78



ALL ELEVATIONS SHALL BE DETERMINED IN THE FIELD BY THE ENGINEER

PAVEMENT MARKING LEGEND

- ① PR MODIFIED URETHANE PAVEMENT MARKING, LINE 5" (SOLID YELLOW)
- ② PR MODIFIED URETHANE PAVEMENT MARKING, LINE 5" (SOLID WHITE)
- ③ PR MODIFIED URETHANE PAVEMENT MARKING, LINE 6" (SOLID WHITE)
- ④ PR MODIFIED URETHANE PAVEMENT MARKING, LINE 6" (6' SKIP, 2' DASH WHITE)
- ⑤ PR MODIFIED URETHANE PAVEMENT MARKING, LINE 8" (SOLID WHITE)
- ⑥ PR MODIFIED URETHANE PAVEMENT MARKING, LINE 12" (SOLID WHITE) (15' TYP SPACING)
- ⑦ PR MODIFIED URETHANE PAVEMENT MARKING, LINE 12" (SOLID YELLOW) (30' TYP SPACING)
- ⑧ PR PREFORMED PLASTIC PAVEMENT MARKING, TYPE B (INLAID), LINE 24" (SOLID WHITE) (15' FROM EOP)
- ⑨ PR PREFORMED PLASTIC PAVEMENT MARKING, TYPE B (INLAID), LETTERS AND SYMBOLS (SOLID WHITE)
- ▷ PR RAISED REFLECTIVE PAVEMENT MARKERS, ONE-WAY CRYSTAL
- ▶ PR RAISED REFLECTIVE PAVEMENT MARKERS, ONE-WAY AMBER
- ◆ PR RAISED REFLECTIVE PAVEMENT MARKERS, TWO-WAY AMBER



FILE NAME =	USER NAME = ebb	DESIGNED -	REVISED -
qa:\08files\080224\wo 2 - us 24 over frazier creek - roadway plans\us 24 & i-172\code		DRAWN 0672F76-sh1-plan05.dgn	REVISED -
	PLOT SCALE = 40.0000 "/ IN.	CHECKED -	REVISED -
	PLOT DATE = 10/16/2012	DATE -	REVISED -

STATE OF ILLINOIS  
 DEPARTMENT OF TRANSPORTATION

SCALE: 1"=20'		SHEET NO. 5 OF 5 SHEETS		STA. 2181+00 TO STA. 2187+00	
---------------	--	-------------------------	--	------------------------------	--

F.A.P. RTE.	SECTION	COUNTY	TOTAL SHEETS	SHEET NO.
63	(I)RS-6	ADAMS	24	21
CONTRACT NO. 72F76				
FED. ROAD DIST. NO. 6 ILLINOIS FED. AID PROJECT				

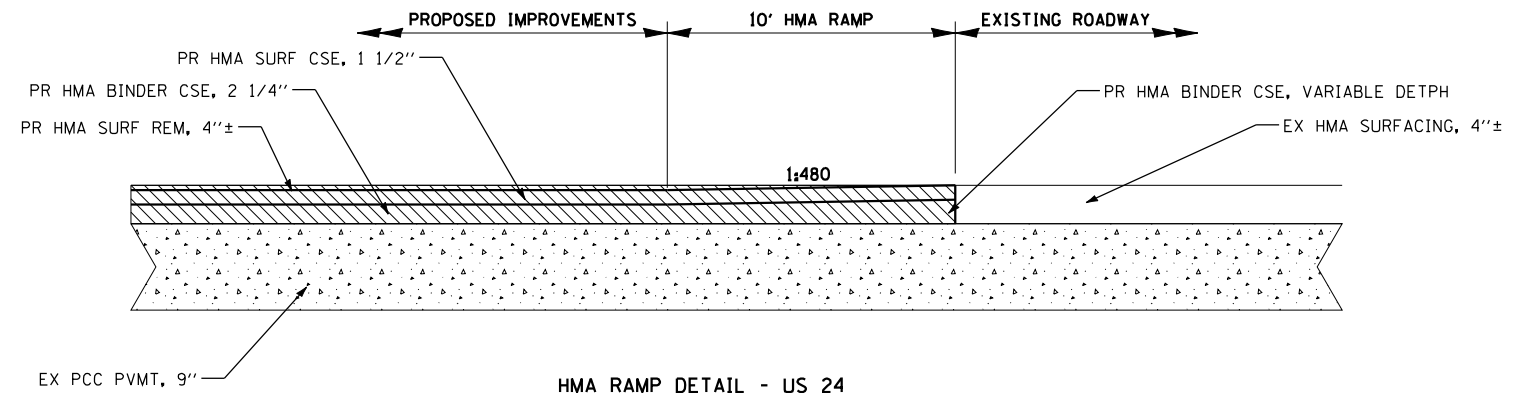
STATION	PROFILE ELEVATION	OFFSETS						AND		ELEVATIONS						
		LEFT EDGE			RIGHT EDGE			POINT OF APPLIED GRADE		LEFT EDGE			RIGHT EDGE			
		PAVEMENT		MED TYPE C-4	C&G TYPE M-6.06		C&G TYPE M-6.06		PAVEMENT		MED TYPE C-4		C&G TYPE M-6.06		PAVEMENT	
		OFFSET	ELEV.	OFFSET	ELEV.	OFFSET	ELEV.	OFFSET	ELEV.	OFFSET	ELEV.	OFFSET	ELEV.	OFFSET	ELEV.	OFFSET
2154+61.96		1.00														23.0
+75		1.01														23.0
2155+00		1.07														23.0
+25		1.19														23.0
+50		1.36														23.0
+75		1.60														23.0
2156+00		1.89														23.0
+25		2.24														23.0
+50		2.65														23.0
+75		3.12														23.0
2157+00		3.65						0.00								23.0
+25		4.24						0.69								23.0
+50		4.88						1.37								23.0
+75		5.59						2.06								23.0
2158+00		6.35						2.75								23.0
+25		7.17						3.44								23.0
+48.71		7.97		-6.00				4.09		8.00						23.0
+50		8.03		-5.98				4.13		8.00						23.0
+75		8.98		-5.04				4.81		8.00						23.0
2159+00		9.98		-4.04				5.50		8.00						23.0
+25		11.04		-2.99				6.19		8.00						23.0
+50		12.15		-1.87				6.90		8.00						23.0
+75		13.32		-0.70				7.56		8.00						23.0
+78.71		13.50		-0.52		-0.52		7.66		8.00		4.50				23.0
2160+00		14.50				0.49		8.25		8.00		4.96				23.0
+25		15.61				1.60		8.94		8.00		5.46				23.0
+50		16.74				2.63		9.63		8.00		5.99				23.0
+53.62		.						9.72		8.00		6.00				23.0
+75		17.59				3.58		10.31				6.37				23.0
2161+00(BK)		18.46				4.46		11.00				6.78				23.0
2161+00(AH)		.														
+25		19.26				5.25						7.15				23.0
+50		19.98				5.98						7.48				23.0
+75		20.62				6.62						7.79				23.0
2162+00		21.19				7.19						8.06				23.0
+25		21.68				7.68						8.29				23.0
+50		22.03				8.09						8.49				23.0
+75		22.43				8.43						8.66				23.0
2163+00		22.69				8.69						8.80				23.0
+25		22.87				8.87						8.90				23.0
+50		22.97				8.97						8.96				23.0
+71.44		23.00				9.00										23.0
+75		.										9.00				23.0
2163+86.93		.										9.00				23.0

STATION	PROFILE ELEVATION	OFFSETS						AND		ELEVATIONS						
		LEFT EDGE			RIGHT EDGE			POINT OF APPLIED GRADE		LEFT EDGE			RIGHT EDGE			
		PAVEMENT		MED TYPE C-4	C&G TYPE M-6.06		C&G TYPE M-6.06		PAVEMENT		MED TYPE C-4		C&G TYPE M-6.06		PAVEMENT	
		OFFSET	ELEV.	OFFSET	ELEV.	OFFSET	ELEV.	OFFSET	ELEV.	OFFSET	ELEV.	OFFSET	ELEV.	OFFSET	ELEV.	OFFSET
2179+37.11		23.00										9.00				
+50		22.99										9.00				
+74.91		22.91										8.90			9.00	23.0
2180+00		22.76										8.67			9.00	23.0
+25		22.52										8.33			9.00	23.0
+50		22.27										7.87			9.00	23.0
+75		21.83										7.31			9.00	23.0
2181+00		21.37										6.62			9.00	23.0
+25		20.83										5.83			9.00	23.0
+50		20.21										4.92			9.00	23.0
+75		19.52										3.90			9.00	23.0
2182+00(BK)															9.00	23.0
2182+00(AH)		18.74										2.76		11.00		9.00
+25		17.90										1.51		10.31		9.00
+50		16.97										0.15		9.62		9.00
+58.40		16.64		1.64		-0.36						9.39			9.00	23.0
+75		15.97		0.96		-1.33						8.84			9.00	23.0
2183+00		14.89		-0.13		-2.92						8.25			9.00	23.0
+25		13.73		-1.28								7.56			9.00	23.0
+29.84		13.50		-1.50		5.00						7.43		9.00	9.00	23.0
+50		12.54		-2.47								6.87		9.00		23.0
+75		11.41		-3.60								6.19		9.00		23.0
2184+00		10.33		-4.68								5.50		9.00		23.0
+25		9.32		-5.69								4.81		9.00		23.0
+50		8.36		-6.65								4.12		9.00		23.0
+59.84		8.00		-7.00								3.85		9.00		23.0
+75		7.46										3.44				23.0
2185+00		6.62										2.75				23.0
+25		5.84										2.06				23.0
+50		5.12										1.37				23.0
+75		4.45										0.69				23.0
2186+00		3.85										0.00				23.0
+25		3.30														23.0
+50		2.81														23.0
+75		2.38														23.0
2187+00		2.01														23.0
+25		1.69														23.0
+50		1.44														23.0
+75		1.24														23.0
2188+00		1.10														23.0
+25		1.02														23.0
+46.59		1.00														23.0

STATION	OFFSET	ELEV.
2168+16.92	3.00' RT	
2168+25.00	2.98' RT	
2168+50.00	2.64' RT	
2168+75.00	1.83' RT	
2169+00.00	0.73' RT	
2169+25.00	0.84' LT	
2169+50.00	2.83' LT	
2169+51.92	3.00' LT	
2169+75.00	4.88' LT	
2170+00.00	6.32' LT	
2170+25.00	7.73' LT	
2170+50.00	8.53' LT	
2170+75.00	8.94' LT	
2170+86.92	9.00' LT	

THE TABLES ABOVE SHOW STATIONS AND OFFSETS UTILIZED DURING THE ORIGINAL CONSTRUCTION OF MEDIANS, ISLANDS, CURB AND GUTTER, ETC. FIELD MEASUREMENTS INDICATE THAT THIS INFORMATION IS REASONABLY CLOSE AND SHOULD BE USED WHERE NO PROPOSED CHANGES TO THE EXISTING LAYOUT OCCUR. ADDITIONAL INFORMATION FOR MEDIANS, ISLANDS, CURB AND GUTTER, ETC. THAT VARY FROM ABOVE CAN BE FOUND ELSEWHERE IN THE PLANS. ALL ELEVATIONS SHALL BE DETERMINED IN THE FIELD BY THE ENGINEER.

STATION	OFFSET	ELEV.
2172+51.08	9.00' RT	
2172+75.00	8.81' RT	
2173+00.00	8.21' RT	
2173+25.00	7.20' RT	
2173+50.00	5.78' RT	
2173+75.00	3.95' RT	
2173+86.08	3.00' RT	
2174+00.00	1.82' RT	
2174+25.00	0.04' RT	
2174+50.00	1.34' LT	
2174+75.00	2.30' LT	
2175+00.00	2.85' LT	
2175+21.08	3.00' LT	

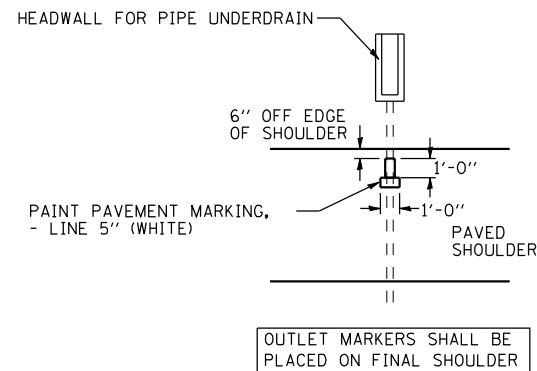


**HMA RAMP DETAIL - US 24**

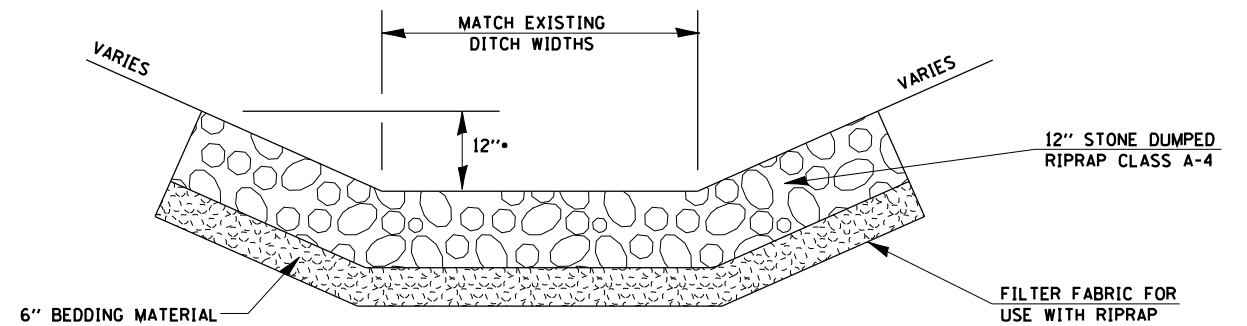
STA 2154+49.68 TO STA 2154+59.68  
 STA 2188+33.33 TO STA 2188+43.33

STA 19+61.12 TO STA 19+71.12 (RAMP A)  
 STA 1+69.31 TO STA 1+79.31 (RAMP B)  
 STA 22+12.58 TO STA 22+22.58 (RAMP C)  
 STA 1+06.69 TO STA 1+16.69 (RAMP D)

**TYPICAL PIPE UNDERDRAIN MARKER DETAIL**



OUTLET MARKERS SHALL BE PLACED ON FINAL SHOULDER



**TYPICAL STONE RIPRAP - DITCH LINING**

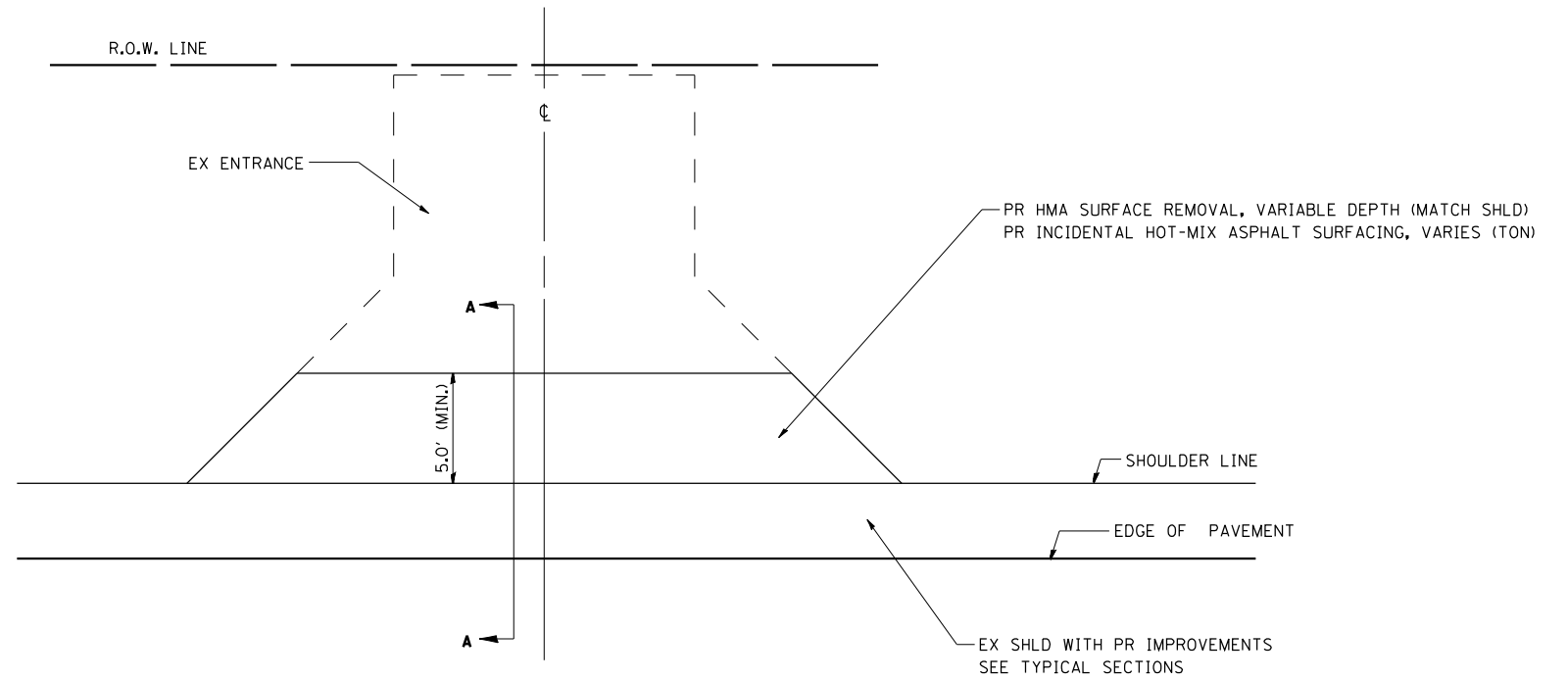
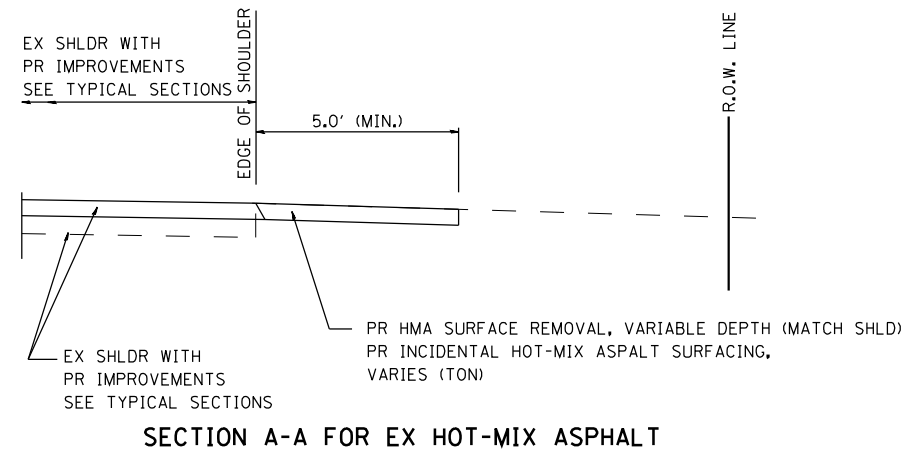
• OR AS DIRECTED BY ENGINEER

FILE NAME =	USER NAME = ebb	DESIGNED -	REVISED -
qa\08files\080224\wo 2 - us 24 over frazier creek - roadway plans\us 24 & 1-172\code		DRAWN	REVISED -
		CHECKED -	REVISED -
		DATE -	REVISED -

**STATE OF ILLINOIS  
 DEPARTMENT OF TRANSPORTATION**

<b>MISCELLANEOUS DETAILS</b>			
SCALE: none	SHEET NO. 1	OF 2 SHEETS	STA. TO STA.

F.A.P. RTE.	SECTION	COUNTY	TOTAL SHEETS	SHEET NO.
63	(1)RS-6	ADAMS	24	23
CONTRACT NO. 72F76				
FED. ROAD DIST. NO. 6 ILLINOIS FED. AID PROJECT				



GENERAL NOTES:

THE RESIDENT ENGINEER WILL DETERMINE THE EXACT TYPE OF IMPROVEMENT TO BE COMPLETED FOR ALL ENTRANCES ON THIS PROJECT.

THE PLAN DETAILS AND SCHEDULES SHOULD BE USED AS A GUIDE FOR THE ENGINEER TO IMPLEMENT THE FINAL DESIGN.

HOT-MIX ASPHALT REQUIRED TO CONSTRUCT THE ENTRANCES SHALL BE IN ACCORDANCE WITH THE APPLICABLE PORTIONS OF SECTION 406 AND 408 OF THE STANDARD SPECIFICATIONS AND AS DIRECTED BY THE ENGINEER.

FILE NAME =	USER NAME = ebb	DESIGNED -	REVISED -
ca:\08files\080224\wo 2 - us 24 over frazier creek - roadway plans\us 24 & i-172\code		DRAWN	REVISED -
	PLOT SCALE = 40.0000' / IN.	CHECKED -	REVISED -
	PLOT DATE = 10/16/2012	DATE -	REVISED -

**STATE OF ILLINOIS  
DEPARTMENT OF TRANSPORTATION**

**ENTRANCE DETAILS**

SCALE: none SHEET NO. 2 OF 2 SHEETS STA. TO STA.

F.A.P. RTE.	SECTION	COUNTY	TOTAL SHEETS	SHEET NO.
63	(I)RS-6	ADAMS	24	24
FED. ROAD DIST. NO. 6 ILLINOIS FED. AID PROJECT			<b>CONTRACT NO. 72F76</b>	