

| F.A.P. RTE. | SECTION | COUNTY | TOTAL SHEETS | SHEET NO. |
|-------------|---------------|----------|--------------------|-----------|
| 302 | (34-1,34-2) N | HANCOCK | 22 | 1 |
| | | ILLINOIS | CONTRACT NO. 72F87 | |

STATE OF ILLINOIS
DEPARTMENT OF TRANSPORTATION
DIVISION OF HIGHWAYS

PROPOSED HIGHWAY PLANS

FAP 302 (IL 110, 336 & 94)
SECTION (34-1, 34-2) N

PROJECT NHPP-0302(012)
INTERSECTION IMPROVEMENT
HANCOCK COUNTY

C-96-020-13

INDEX OF SHEETS

- 1 COVER SHEET
- 2 GENERAL NOTES
- 3-5 SUMMARY OF QUANTITIES
- 6-7 SCHEDULE OF QUANTITIES
- 8-9 TYPICAL SECTIONS
- 10-12 PLAN SHEET
- 13-22 CROSS SECTIONS

FOR LIST OF HIGHWAY STANDARDS, SEE SHEET NO. 2

HIGHWAY CLASSIFICATION

F.A.P. ROUTE 302 (IL 110, 336, 94)

CLASSIFICATION: MINOR ARTERIAL

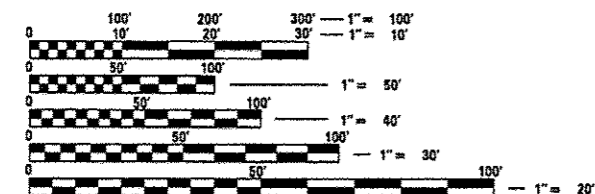
AVERAGE DAILY TRAFFIC (2011)

FAP 302 (IL 110/IL 336/IL 94)
ADT = 3,050-3,900 S.U. = 4.8% M.U. = 8.9%

TR 401/E COUNTY ROAD 250
ADT = 1,000 S.U. = 13.0% M.U. = 2.0%

FAS 429/400N & FAP 733/400N/ML 94
ADT = 700 S.U. = 3.6% M.U. = 17.9%

DENVER-PLYMOUTH ROAD/TR 319/650N
& FAS 433/650N/CH 19
ADT = 550 S.U. = 5.5% M.U. = 1.8%



FULL SIZE PLANS HAVE BEEN PREPARED USING STANDARD ENGINEERING SCALES. REDUCED SIZED PLANS WILL NOT CONFORM TO STANDARD SCALES. IN MAKING MEASUREMENTS ON REDUCED PLANS, THE ABOVE SCALES MAY BE USED.

J.U.L.I.E.
JOINT UTILITY LOCATION INFORMATION FOR EXCAVATION
1-800-892-0123
OR 811

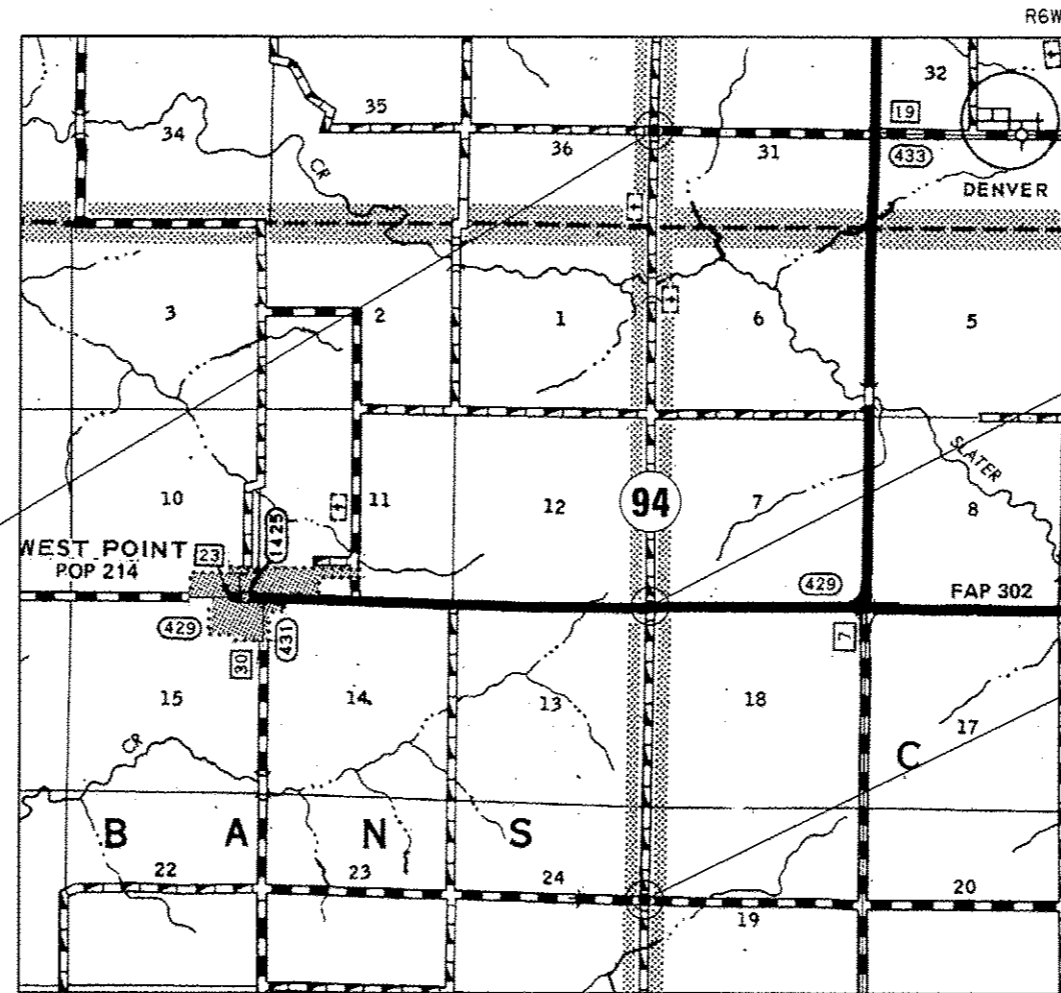
SENIOR TEAM LEADER VINCE MADONIA 217-785-9046
TEAM LEADER JAY EDWARDS 217-785-5321

CONTRACT NO. 72F87

D-96-020-13



LOCATION OF SECTION INDICATED THUS: -



LOCATION MAP

SCALE
1 INCH = 1 MILE

FAS 429/400N &
FAP 733/400N/ML 94
STA. 1126 + 64.14

TR 401/E COUNTY ROAD 250
STA. 1048 + 81.53

STATE OF ILLINOIS
DEPARTMENT OF TRANSPORTATION
DIVISION OF HIGHWAYS

SUBMITTED Feb. 13 20 13

Ray Z Diskal
DEPUTY DIRECTOR OF HIGHWAYS, REGION ENGINEER

March 22 20 13
John D. Baranzelli, P.E.
ENGINEER OF DESIGN AND ENVIRONMENT

March 22 20 13
Omer Osman, P.E.
DIRECTOR OF HIGHWAYS, CHIEF ENGINEER

PRINTED BY THE AUTHORITY
OF THE STATE OF ILLINOIS