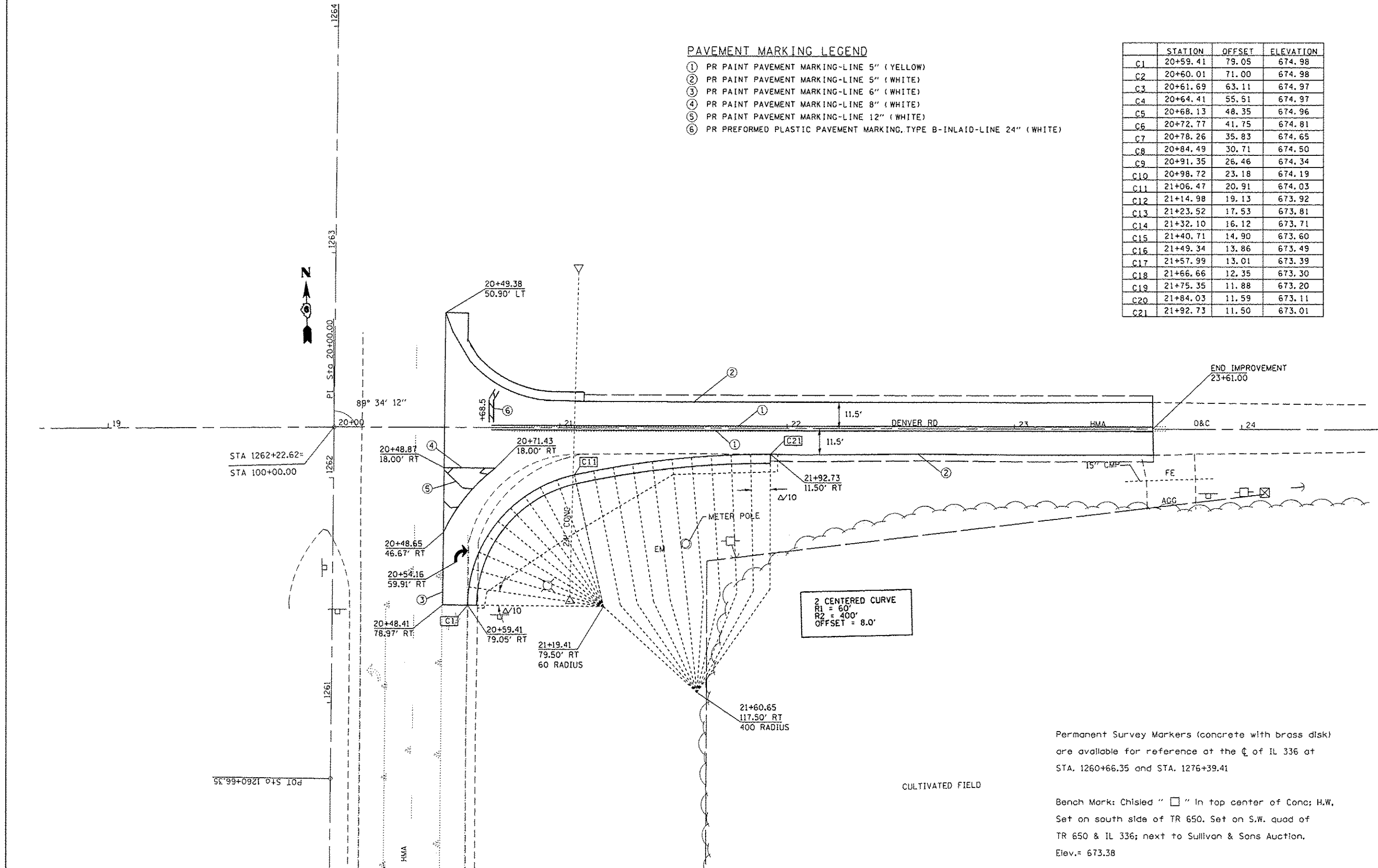


PAVEMENT MARKING LEGEND

- ① PR PAINT PAVEMENT MARKING-LINE 5" (YELLOW)
- ② PR PAINT PAVEMENT MARKING-LINE 5" (WHITE)
- ③ PR PAINT PAVEMENT MARKING-LINE 6" (WHITE)
- ④ PR PAINT PAVEMENT MARKING-LINE 8" (WHITE)
- ⑤ PR PAINT PAVEMENT MARKING-LINE 12" (WHITE)
- ⑥ PR PREFORMED PLASTIC PAVEMENT MARKING, TYPE B-INLAID-LINE 24" (WHITE)

| | STATION | OFFSET | ELEVATION |
|-----|----------|--------|-----------|
| C1 | 20+59.41 | 79.05 | 674.98 |
| C2 | 20+60.01 | 71.00 | 674.98 |
| C3 | 20+61.69 | 63.11 | 674.97 |
| C4 | 20+64.41 | 55.51 | 674.97 |
| C5 | 20+68.13 | 48.35 | 674.96 |
| C6 | 20+72.77 | 41.75 | 674.81 |
| C7 | 20+78.26 | 35.83 | 674.65 |
| C8 | 20+84.49 | 30.71 | 674.50 |
| C9 | 20+91.35 | 26.46 | 674.34 |
| C10 | 20+98.72 | 23.18 | 674.19 |
| C11 | 21+06.47 | 20.91 | 674.03 |
| C12 | 21+14.98 | 19.13 | 673.92 |
| C13 | 21+23.52 | 17.53 | 673.81 |
| C14 | 21+32.10 | 16.12 | 673.71 |
| C15 | 21+40.71 | 14.90 | 673.60 |
| C16 | 21+49.34 | 13.86 | 673.49 |
| C17 | 21+57.99 | 13.01 | 673.39 |
| C18 | 21+66.66 | 12.35 | 673.30 |
| C19 | 21+75.35 | 11.88 | 673.20 |
| C20 | 21+84.03 | 11.59 | 673.11 |
| C21 | 21+92.73 | 11.50 | 673.01 |



Permanent Survey Markers (concrete with brass disk) are available for reference at the C of IL 336 at STA. 1260+66.35 and STA. 1276+39.41

Bench Mark: Chisled " \square " in top center of Conc; H.W. Set on south side of TR 650. Set on S.W. quad of TR 650 & IL 336; next to Sullivan & Sons Auction. Elev. = 673.38

| | | | | | | | | | | | | |
|--|------------------------------------|------------|-----------|---|-------------------------------------|---------------|---------|--------------------|---------|--------|--------------|-----------|
| FILE NAME = | USER NAME = sperkagw | DESIGNED - | REVISED - | STATE OF ILLINOIS DEPARTMENT OF TRANSPORTATION | DENVER ROAD PLAN SHEET | | | F.A.P. RTE. | SECTION | COUNTY | TOTAL SHEETS | SHEET NO. |
| ci:\pawork\pridot\seperkagw\2325326\0672FB7-shs-plan-Denver RD.dgn | | DRAWN - | REVISED - | | 302 | (34-1,34-2) N | HANCOCK | 22 | 12 | | | |
| Default | PLOT SCALE = 48.0000' / in. | CHECKED - | REVISED - | | SCALE: SHEET OF SHEETS STA. TO STA. | | | CONTRACT NO. 72FB7 | | | | |
| | PLOT DATE = Mar-05-2013 09:09:58AM | DATE - | REVISED - | | ILLINOIS FED. AID PROJECT | | | | | | | |