

04-26-13 LETTING ITEM 153

INDEX OF SHEETS

- 1 COVER SHEET
- 2 GENERAL NOTES
- 3-5 SUMMARY OF QUANTITIES
- 6-7 SCHEDULE OF QUANTITIES
- 8-9 TYPICAL SECTIONS
- 10-12 PLAN SHEET
- 13-22 CROSS SECTIONS

FOR LIST OF HIGHWAY STANDARDS, SEE SHEET NO. 2

HIGHWAY CLASSIFICATION

F.A.P. ROUTE 302 (IL 110, 336, 94)

CLASSIFICATION: MINOR ARTERIAL

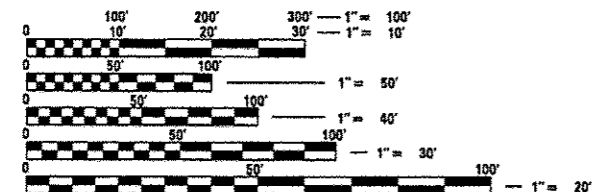
AVERAGE DAILY TRAFFIC (2011)

FAP 302 (IL 110/IL 336/IL 94)
ADT = 3,050-3,900 S.U. = 4.8% M.U. = 8.9%

TR 401/E COUNTY ROAD 250
ADT = 1,000 S.U. = 13.0% M.U. = 2.0%

FAS 429/400N & FAP 733/400N/ML 94
ADT = 700 S.U. = 3.6% M.U. = 17.9%

DENVER-PLYMOUTH ROAD/TR 319/650N
& FAS 433/650N/CH 19
ADT = 550 S.U. = 5.5% M.U. = 1.8%



FULL SIZE PLANS HAVE BEEN PREPARED USING STANDARD ENGINEERING SCALES. REDUCED SIZED PLANS WILL NOT CONFORM TO STANDARD SCALES. IN MAKING MEASUREMENTS ON REDUCED PLANS, THE ABOVE SCALES MAY BE USED.

J.U.L.I.E.
JOINT UTILITY LOCATION INFORMATION FOR EXCAVATION
1-800-892-0123
OR 811

SENIOR TEAM LEADER VINCE MADONIA 217-785-9046
TEAM LEADER JAY EDWARDS 217-785-5321

CONTRACT NO. 72F87

STATE OF ILLINOIS
DEPARTMENT OF TRANSPORTATION
DIVISION OF HIGHWAYS

**PROPOSED
HIGHWAY PLANS**

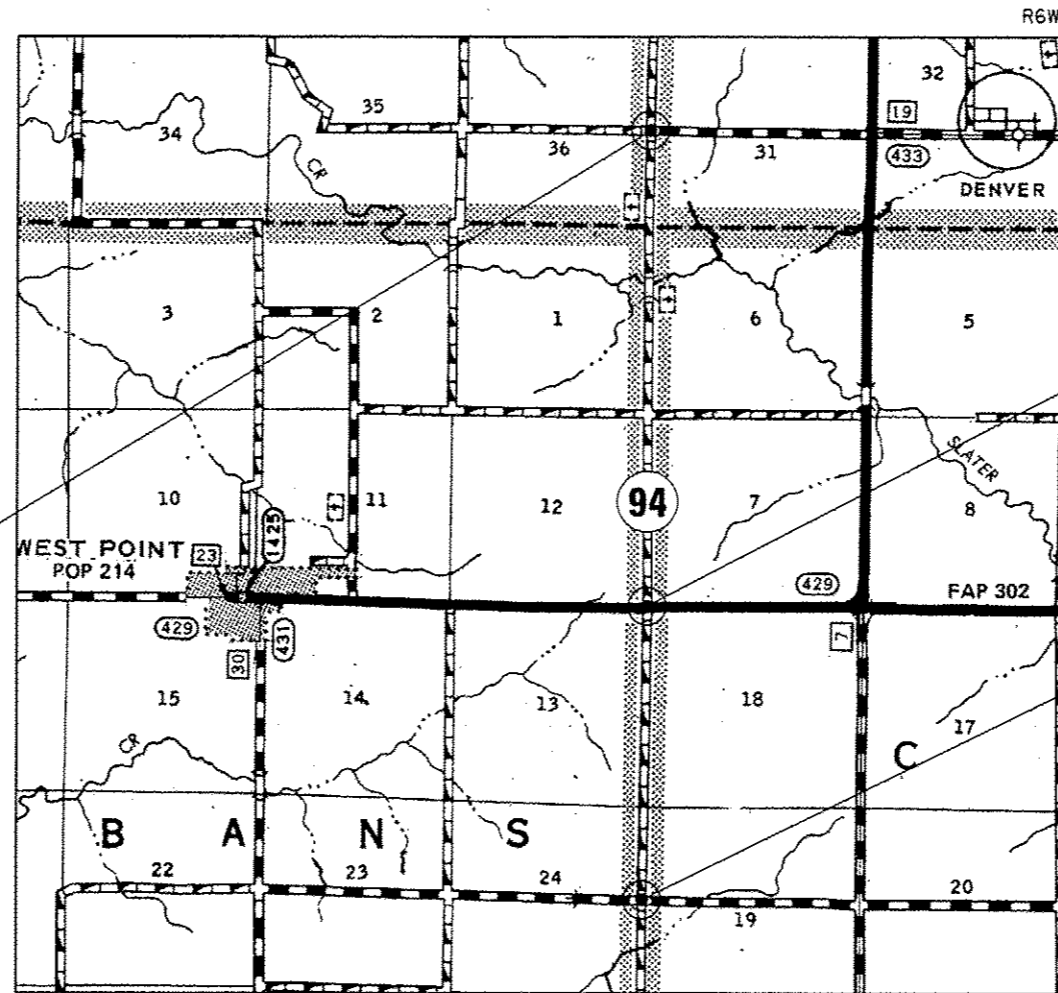
FAP 302 (IL 110, 336 & 94)

SECTION (34-1, 34-2) N

PROJECT NHPP-0302(012)

INTERSECTION IMPROVEMENT
HANCOCK COUNTY

C-96-020-13



LOCATION MAP

SCALE
1 INCH = 1 MILE

F.A.P. RTE.	SECTION	COUNTY	TOTAL SHEETS	SHEET NO.
302	(34-1,34-2) N	HANCOCK	22	1
		ILLINOIS	CONTRACT NO. 72F87	

D-96-020-13



LOCATION OF SECTION INDICATED THUS:

FAS 429/400N & FAP 733/400N/ML 94
STA. 1126 + 64.14

TR 401/E COUNTY ROAD 250
STA. 1048 + 81.53

STATE OF ILLINOIS
DEPARTMENT OF TRANSPORTATION
DIVISION OF HIGHWAYS

SUBMITTED Feb. 13 20 13

Ray Z. Diskal
DEPUTY DIRECTOR OF HIGHWAYS, REGION ENGINEER

March 22 20 13
John D. Baranzelli, P.E.
ENGINEER OF DESIGN AND ENVIRONMENT

March 22 20 13
Omer Osman, P.E.
DIRECTOR OF HIGHWAYS, CHIEF ENGINEER

PRINTED BY THE AUTHORITY
OF THE STATE OF ILLINOIS

GENERAL NOTES AND COMMENTS

1. ALL ENTRANCES CURRENTLY IN USE SHALL REMAIN ACCESSIBLE BOTH DURING AND AFTER CONSTRUCTION.
2. FIELD/RESIDENT ENGINEER SHALL COORDINATE WITH OPERATION TO VERIFY NO PASSING ZONES, BUT SHALL CONTACT STUDIES & PLANS CONCERNING COMMITMENTS AND REASONS FOR PROPOSED CHANGES IN NO PASSING ZONES FROM PREVIOUS PAVEMENT MARKINGS.
3. FIELD/RESIDENT ENGINEER SHALL CONTACT OPERATIONS TO REQUEST BURIED LIGHT WIRING BE LOCATED AND MARKED IN ORDER TO PREVENT DAMAGE DURING CONSTRUCTION.
4. THE THICKNESS OF BITUMINOUS MIXTURES SHOWN ON THE PLANS IS THE NOMINAL THICKNESS. DEVIATIONS FROM THE NOMINAL THICKNESS WILL BE PERMITTED WHEN SUCH DEVIATIONS OCCUR DUE TO IRREGULARITIES IN THE EXISTING SURFACE OR BASE ON WHICH THE BITUMINOUS MIXTURE IS PLACED.
5. UNLESS DIRECTED BY THE ENGINEER, PAVEMENT MARKING LINES SHALL NOT BE LAID DIRECTLY OVER A LONGITUDINAL CRACK OR JOINT NOR OVER A TAR OR ASPHALT PAINTED LINE. THE EDGE OF A CENTERLINE OR LANE LINE SHALL BE OFFSET A MINIMUM DISTANCE OF 2" FROM A LONGITUDINAL CRACK OR JOINT. EDGE LINES SHALL BE APPROXIMATELY 2" FROM THE EDGE LINE OF PAVEMENT. SEE SECTION 780 OF THE STANDARD SPECIFICATIONS FOR TRAFFIC CONTROL ITEMS.
6. THE FOLLOWING RATES OF APPLICATION HAVE BEEN USED TO CALCULATE THE PLAN QUANTITIES:

BITUMINOUS MATERIALS (PRIME COAT)	0.00038 TON/SQ. YD. (ON PAVEMENT)
BITUMINOUS MATERIALS (PRIME COAT)	0.001425 TON/SQ. YD. (ON AGG.)
AGGREGATE PRIME COAT	0.002 TON/SQ. YD.
BITUMINOUS CONCRETE SURFACE / BINDER	0.056 TON/SQ. YD. PER 1"
AGGREGATE MATERIAL	2.05 TON/CU. YD.

COMMITMENTS:

THE FIELD/RESIDENT ENGINEER SHALL CONTACT STUDIES AND PLANS CONCERNING ANY MAJOR PLAN CHANGES TO MAKE SURE NO PREVIOUS COMMITMENTS (NOT LISTED) WERE MADE AFFECTING THE DESIGN, AND ALLOW AN IMPROVED DESIGN FOR FUTURE PROJECTS.

THE FOLLOWING MIXTURE REQUIREMENTS ARE APPLICABLE FOR THIS PROJECT:

MIXTURE USE(S):	HMA BASE COURSE	HMA SURFACE
PG:	PG 64-22	PG 64-22
DESIGN AIR VOIDS:	4.0% @ N 70	4.0% @ N 70
MIXTURE COMPOSITION: (GRADATION MIXTURE)	IL 19.0	IL 9.5
FRICITION AGGREGATE:	N/A	MIX "C"

LIST OF STANDARDS

- 000001-06
- 482001-02
- 701001-02
- 701006-04
- 701101-03
- 701106-02
- 701201-04
- 701301-04
- 701326-04
- 701400-06
- 701406-06
- 701901-02
- 780001-03

DISTRICT SIX	
EXAMINED <u>2/5</u>	20 <u>13</u>
<i>[Signature]</i>	
OPERATIONS ENGINEER	

EXAMINED <u>FEB 7</u>	20 <u>13</u>
<i>[Signature]</i>	
PROJECT IMPLEMENTATION ENGINEER	
EXAMINED <u>Feb 8</u>	20 <u>13</u>
<i>[Signature]</i>	
PROGRAM DEVELOPMENT ENGINEER	

CODE NO.	ITEM	UNIT	TOTAL QUANTITY	CONSTR. CODE
				80% FED. 20% STATE
				ROADWAY 0005
20200100	EARTH EXCAVATION	CU YD	258.0	258.0
* 25000200	SEEDING, CLASS 2	ACRE	0.2	0.2
* 25000400	NITROGEN FERTILIZER NUTRIENT	POUND	11.0	11.0
* 25000500	PHOSPHORUS FERTILIZER NUTRIENT	POUND	11.0	11.0
* 25000600	POTASSIUM FERTILIZER NUTRIENT	POUND	11.0	11.0
* 25100115	MULCH, METHOD 2	ACRE	0.2	0.2
28000250	TEMPORARY EROSION CONTROL SEEDING	POUND	12.0	12.0
31100700	SUBBASE GRANULAR MATERIAL, TYPE A 8"	SO YD	666.0	666.0
35501331	HOT-MIX ASPHALT BASE COURSE, 11 3/4"	SO YD	577.0	577.0
40600200	BITUMINOUS MATERIALS (PRIME COAT)	TON	4.0	4.0
40600300	AGGREGATE (PRIME COAT)	TON	2.0	2.0
40603315	HOT-MIX ASPHALT SURFACE COURSE, MIX "C", N70	TON	307.0	307.0
44000155	HOT-MIX ASPHALT SURFACE REMOVAL, 1 1/2"	SO YD	3076.0	3076.0
44004250	PAVED SHOULDER REMOVAL	SO YD	243.0	243.0

H

*SPECIALTY ITEM

FILE NAME :	USER NAME : sparksgw	DESIGNED -	REVISED -	STATE OF ILLINOIS DEPARTMENT OF TRANSPORTATION	SUMMARY OF QUANTITIES				F.A.P. RTE.	SECTION	COUNTY	TOTAL SHEETS	SHEET NO.
Default	72F87-211-500.dgn	DRAWN -	REVISED -						302	(34-1,34-2) N	HANCOCK	22	3
	PLOT SCALE * 100.0000 * / 1" = 100'	CHECKED -	REVISED -		SCALE:	SHEET	OF	SHEETS	STA.	TO	STA.	CONTRACT NO. 72F87	
	PLOT DATE * Feb-13-2013 08:44:50AM	DATE -	REVISED -		ILLINOIS FED. AID PROJECT								

CODE NO.	ITEM	UNIT	TOTAL QUANTITY	CONSTR. CODE
				80% FED. 20% STATE ROADWAY 0005
48101200	AGGREGATE SHOULDERS, TYPE B	TON	29.0	29.0
54213681	PRECAST REINFORCED CONCRETE FLARED END SECTIONS 36"	EACH	1.0	1.0
67100100	MOBILIZATION	L SUM	1.0	1.0
70100700	TRAFFIC CONTROL AND PROTECTION, STANDARD 701406	L SUM	1.0	1.0
70100450	TRAFFIC CONTROL AND PROTECTION, STANDARD 701201	L SUM	1.0	1.0
70100500	TRAFFIC CONTROL AND PROTECTION, STANDARD 701326	L SUM	1.0	1.0
70103815	TRAFFIC CONTROL SURVEILLANCE	CAL DA	5.0	5.0
70300100	SHORT TERM PAVEMENT MARKING	FOOT	760.0	760.0
70301000	WORK ZONE PAVEMENT MARKING REMOVAL	50 FT	127.0	127.0
* 72400500	RELOCATE SIGN PANEL ASSEMBLY - TYPE A	EACH	2.0	2.0
* 72800100	TELESCOPING STEEL SIGN SUPPORT	FOOT	36.0	36.0
* 78001120	PAINT PAVEMENT MARKING - LINE 5"	FOOT	3197.0	3197.0
* 78001130	PAINT PAVEMENT MARKING - LINE 6"	FOOT	84.0	84.0
* 78001140	PAINT PAVEMENT MARKING - LINE 8"	FOOT	351.0	351.0

* SPECIALTY ITEM

FILE NAME *	USER NAME * sparkgw	DESIGNED -	REVISED -	STATE OF ILLINOIS DEPARTMENT OF TRANSPORTATION	SUMMARY OF QUANTITIES				F.A.P. RTE.	SECTION	COUNTY	TOTAL SHEETS	SHEET NO.
Default	Default	DRAWN -	REVISED -						302	(34-1,34-2) N	HANCOCK	22	4
	PLOT SCALE * 1/8"=1'-0"	CHECKED -	REVISED -		SCALE:	SHEET	OF	SHEETS	STA.	TO STA.	ILLINOIS FED. AID PROJECT		
	PLDT DATE * Feb-13-2013 08:44:50AM	DATE -	REVISED -		CONTRACT NO. 72F87								

CODE NO.	ITEM	UNIT	TOTAL QUANTITY	CONSTR. CODE
				80% FED. 20% STATE ROADWAY 0005
* 78001150	PAINT PAVEMENT MARKING - LINE 12"	FOOT	127.0	127.0
* 78004200	PREFORMED PLASTIC PAVEMENT MARKING, TYPE B - INLAID - LETTERS AND SYMBOLS	SO FT	47.0	47.0
* 78004280	PREFORMED PLASTIC PAVEMENT MARKING, TYPE B - INLAID - LINE 24"	FOOT	59.0	59.0
542A0241	PIPE CULVERTS, CLASS A, TYPE 1 36"	FOOT	12.0	12.0

1A

32

* SPECIALTY ITEM

FILE NAME : c:\pwwork\p1dot\eparkga\d0325326\067	USER NAME : sparkga	DESIGNED -	REVISED -	STATE OF ILLINOIS DEPARTMENT OF TRANSPORTATION	SUMMARY OF QUANTITIES				F.A.P. RTE. 302	SECTION (34-1,34-2) N	COUNTY HANCOCK	TOTAL SHEETS 22	SHEET NO. 5
PLOT SCALE : 1/8" = 100'-0"	CHECKED -	REVISED -	REVISED -		SCALE:	SHEET	OF	SHEETS	STA.	TO STA.	ILLINOIS FED. AID PROJECT		
Default	PLOT DATE : Feb-13-2013 08:44:50AM	DATE -	REVISED -		CONTRACT NO. 72F87								

EARTH EXCAVATION

20200100

LOCATION	EARTH EXCAVATION	EARTH EXCAVATION ADJUSTED FOR SHRINKAGE	EMBANKMENT	BALANCE WASTE (+) OR SHORTAGE (-)
	CU YD	CU YD	CU YD	CU YD
TR 401	74.0	55.5	103.0	-47.5
IL 94	100.0	75.0	12.0	+63
DENVER ROAD	84	63.0	33.0	+30
TOTAL	258.0	193.5	148.0	+45.5
USE	258			

SHRINKAGE FACTOR=25%

PAVED SHOULDER REMOVAL

44004250

LOCATION	SIDE	SQ YD
TR 401	RT	31.4
IL 94	LT	172.4
DENVER ROAD	RT	39.1
TOTAL		242.8
USE		243

AGGREGATE SHOULDERS, TYPE B

48101200

LOCATION	SIDE	SQ YD	TON*
TR 401	LT	82.4	9.4
IL 94	RT	25.9	2.9
DENVER ROAD	LT	140.5	16.0
TOTAL			28.3
USE			29

* QUANTITY ESTIMATED USING 2" THICKNESS

SEEDING SCHEDULE

25000200 25000400 25000500 25000600 25100115 28000250

LOCATION	AREA TO BE SEEDED	SEEDING, CLASS 2	NITROGEN FERTILIZER NUTRIENT	PHOSPHORUS FERTILIZER NUTRIENT	POTASSIUM FERTILIZER NUTRIENT	MULCH, METHOD 2	TEMP EROSION CONTROL SEEDING
	SQ FT	ACRE	POUND	POUND	POUND	ACRE	POUND
TR 401	2014	0.05	4.2	4.2	4.2	0.05	4.6
IL 94	1277	0.03	2.6	2.6	2.6	0.03	2.9
DENVER ROAD	1730	0.04	3.6	3.6	3.6	0.04	4.0
TOTAL	5021	0.12	10.4	10.4	10.4	0.12	11.5
USE		0.2	11	11	11	0.2	12

PIPE CULVERT SCHEDULE

54213681 542A0241

LOCATION	SIDE	PRECAST REINFORCED CONCRETE FLARED END SECTIONS 36"	PIPE CULVERTS, CLASS A, TYPE 1 36"
		EACH	FOOT
TR 401	RT	1.0	12.0

SUBBASE GRANULAR MATERIAL, TYPE A, 8"

31100700

LOCATION	SQ YD
TR 401	201.3
IL 94	264.4
DENVER ROAD	200.3
TOTAL	666.0
USE	666

ROADWAY PAVING SCHEDULE

35501331 40600200 40600300 40603315 44000155

LOCATION	HMA ASPHALT BASE COURSE, 1 1/2"	BITUMINOUS MATERIALS (PRIME COAT)	AGGREGATE (PRIME COAT)	HMA SURFACE COURSE, MIX "C", N70 1 1/2"	HMA SURFACE COURSE, MIX "C", N70 1 1/2"	HMA SURFACE REMOVAL, 1 1/2"
	SQ YD	TON	TON	SQ YD	TON	SQ YD
TR 401	174.5	0.9	0.3	1039.7	87.3	865.2
IL 94	228.5	1.2	0.5	1401.7	117.7	1173.2
DENVER ROAD	173.6	1.1	0.4	1210.9	101.7	1037.3
TOTAL	576.6	3.2	1.2	3652.3	306.8	3075.7
USE	577	4	2		307	3076

SHORT TERM PAVEMENT MARKING

70300100 70301000

STATION TO STATION	SHORT TERM PAVEMENT MARKING	WORK ZONE PAVEMENT MARKING REMOVAL
	FOOT	SQ FT
TR 401	236	39.3
IL 94	254	42.3
DENVER ROAD	270	45.0
TOTAL	760	126.7
USE	760*	127

NOTE: QUANTITIES INCLUDE 2 APPLICATIONS FOR PAVEMENT MARKING BUT 1 APPLICATION FOR REMOVAL.

PREFORMED PLASTIC PAVEMENT MARKING,
TYPE B - INLAID - LETTERS AND SYMBOLS

		78004200
LOCATION	DESCRIPTION	WHITE SQ FT
TR 401		
10+55.0, 58.1' RT	ARROW	15.6
IL 94		
50+56.0, 70.8' RT	ARROW	15.6
DENVER ROAD		
20+54.2, 59.9' RT	ARROW	15.6
TOTAL		46.8
USE		47

PAINT PAVEMENT MARKING - LINE 5''

		78001120		
STATION TO STATION	DESCRIPTION	WHITE FOOT	YELLOW FOOT	TOTAL FOOT
TR 401				
10+68.5, CL	12+82.5, CL	DOUBLE	428.0	428.0
10+60.5, 80.3' RT	11+93.8, 12.0' RT		168.5	168.5
10+48.7, 58.4' LT	11+93.8, 11.9' LT		393.3	393.3
IL 94				
50+86.4, CL	52+47.3, CL	DOUBLE	321.8	321.8
50+62.2, 77.2' RT	52+47.3, 13.5' RT		402.5	402.5
50+45.1, 157.8' LT	52+47.3, 13.0' LT		308.1	308.1
DENVER ROAD				
20+69.6, CL	23+61.0	DOUBLE	582.8	582.8
20+59.4, 79.0' RT	21+92.7, 11.5' RT		167.7	167.7
20+49.4, 50.9' LT	20+92.7, 11.6' LT		424.3	424.3
TOTAL		1864.4	1332.6	3197.0
USE				3197

PAINT PAVEMENT MARKING - LINE 6''

		78001130
STATION TO STATION		WHITE FOOT
TR 401		
10+49.5, 80.4' RT	10+49.3, 48.1' RT	32.3
IL 94		
50+50.2, 77.5' RT	50+49.8, 58.9' RT	18.6
DENVER ROAD		
20+48.4, 79.0' RT	20+48.7, 46.7' RT	32.3
TOTAL		83.2
USE		84

PREFORMED PLASTIC PAVEMENT MARKING,
TYPE B - INLAID - LINE 24''

		78004280
STATION TO STATION		WHITE FOOT
TR 401		
10+69.5, CL	10+69.5, 13.9' LT	13.9
10+69.5, 13.9' LT	10+72.1, 17.4' LT	7.0
IL 94		
50+87.4, CL	50+87.4, 13.5' LT	13.5
50+87.4, 13.5' LT	50+91.8, 21.2' LT	9.4
DENVER ROAD		
20+70.6, 2.4' LT	20+70.6, 12.3' LT	10.0
20+70.6, 12.3' LT	20+73.0, 16.1' LT	4.5
TOTAL		58.3
USE		59

PAINT PAVEMENT MARKING - LINE 8''

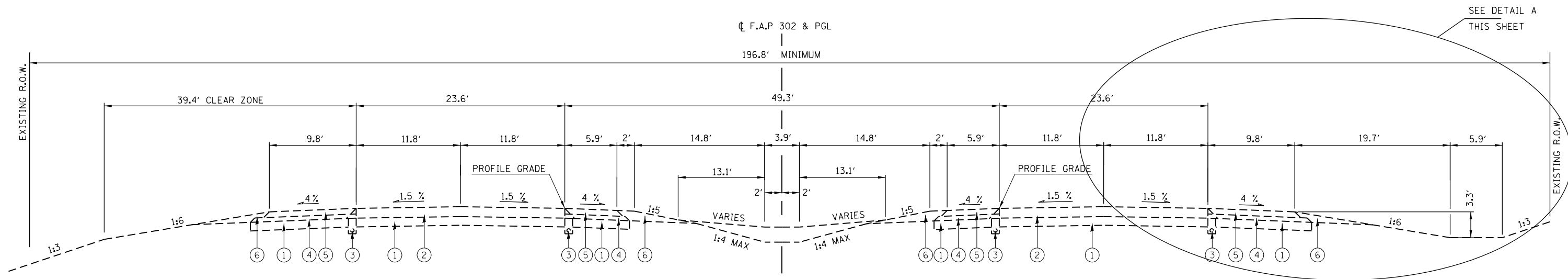
		78001140
STATION TO STATION		WHITE FOOT
TR 401		
10+49.3, 48.1' RT	10+73.1, 18.0' RT	38.8
10+73.1, 18.0' RT	10+49.1, 18.0' RT	24.0
10+49.1, 18.0' RT	10+49.3, 48.1' RT	40.9
IL 94		
50+49.8, 58.9' RT	50+90.2, 18.0' RT	58.7
50+90.2, 18.0' RT	50+48.9, 18.0' RT	41.3
50+48.9, 18.0' RT	50+49.8, 58.9' RT	58.9
DENVER ROAD		
20+48.7, 46.7' RT	20+71.4, 18.0' RT	37.0
20+71.4, 18.0' RT	20+48.9, 18.0' RT	22.6
20+48.9, 18.0' RT	20+48.7, 46.7' RT	28.7
TOTAL		350.9
USE		351

PAINT PAVEMENT MARKING - LINE 12''

		78001150
LOCATION		WHITE FOOT
TR 401		33.4
IL 94		59.8
DENVER ROAD		33.4
TOTAL		126.6
USE		127

SIGN SCHEDULE

LOCATION	DESCRIPTION	NO. OF SIGNS	PR POST LENGTH EACH SIGN (FOOT)	72400500	72800100
				RELOCATE SIGN PANEL ASSEMBLY, TYPE A (EACH)	TELESCOPING STEEL SIGN SUPPORT (FOOT)
IL 94					
	CROSS TRAFFIC STOP	1	18	1	18
	STREET NAME	1	18	1	18
	STREET NAME	1			
TOTAL				2	36



TYPICAL EXPRESSWAY SECTION (FAP 302)

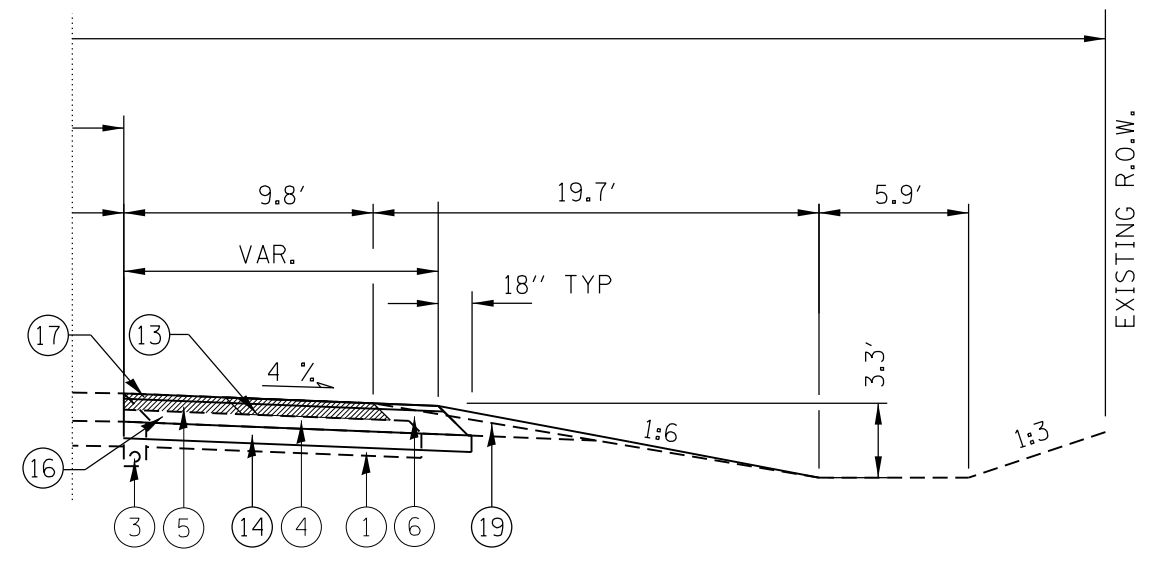
STA. 1048+00.00 TO STA. 1262+75.00

EXISTING LEGEND

- ① EXISTING LIME MODIFIED SOIL, 11 3/4"
- ② EXISTING BITUMINOUS CONCRETE PAVEMENT (FULL-DEPTH), 13 1/4"
- ③ EXISTING PIPE UNDERDRAINS, 4"
- ④ EXISTING SUB-BASE GRANULAR MATERIAL TYPE C, 5 1/2"
- ⑤ EXISTING BITUMINOUS SHOULDERS, 7 3/4", WITH RUMBLE STRIPS
- ⑥ EXISTING AGGREGATE SHOULDERS, TYPE B
- ⑦ EXISTING EARTH SHOULDERS
- ⑧ EXISTING BITUMINOUS CONCRETE PAVEMENT (FULL-DEPTH), 11 3/4"

PROPOSED LEGEND

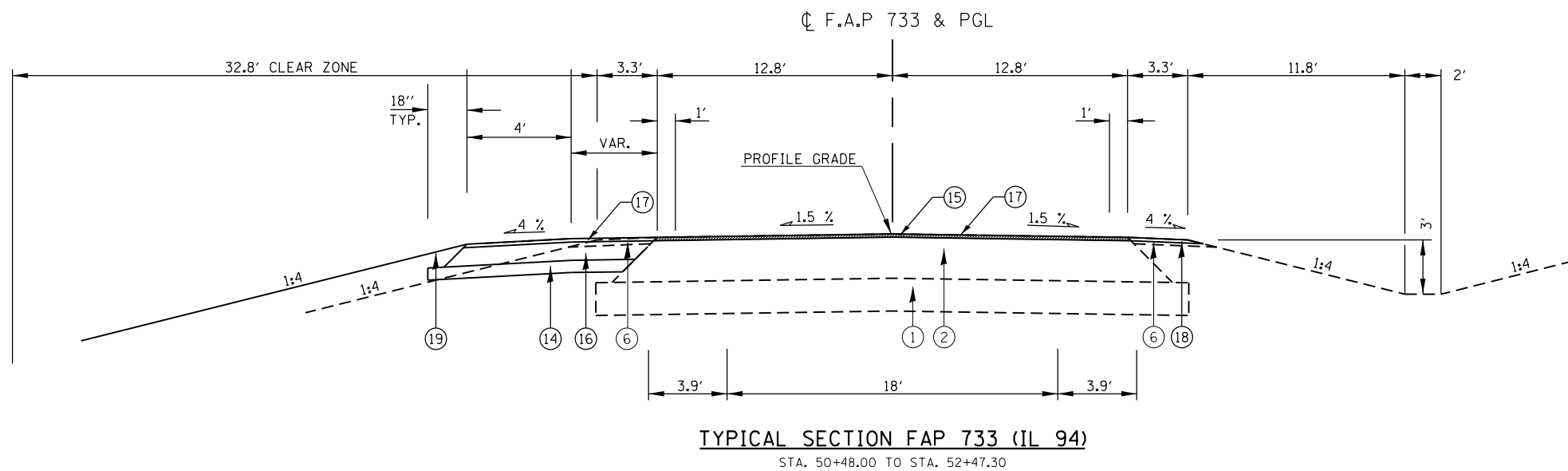
- ⑬ PROPOSED PAVED SHOULDER REMOVAL
- ⑭ PROPOSED SUBBASE GRANULAR MATERIAL, TYPE A, 8"
- ⑮ PROPOSED HOT-MIX ASPHALT SURFACE REMOVAL, 1 1/2"
- ⑯ PROPOSED HOT-MIX ASPHALT BASE COURSE, 11 3/4"
- ⑰ PROPOSED HOT-MIX ASPHALT SURFACE COURSE, MIX "C", N50, 1 1/2"
- ⑱ PROPOSED AGGREGATE SHOULDERS, TYPE B
- ⑲ PROPOSED EARTH SHOULDERS



DETAIL A

STA. 1048+00.00 TO STA. 1262+75.00

FILE NAME =	USER NAME = sparksgw	DESIGNED -	REVISED -	STATE OF ILLINOIS DEPARTMENT OF TRANSPORTATION	TYPICAL SECTIONS			F.A.P. RTE.	SECTION	COUNTY	TOTAL SHEETS	SHEET NO.				
		DRAWN -	REVISED -		SCALE:	SHEET	OF	SHEETS	STA.	TO	STA.	302	(34-1,34-2) N	HANCOCK	22	8
		CHECKED -	REVISED -													
		DATE -	REVISED -													



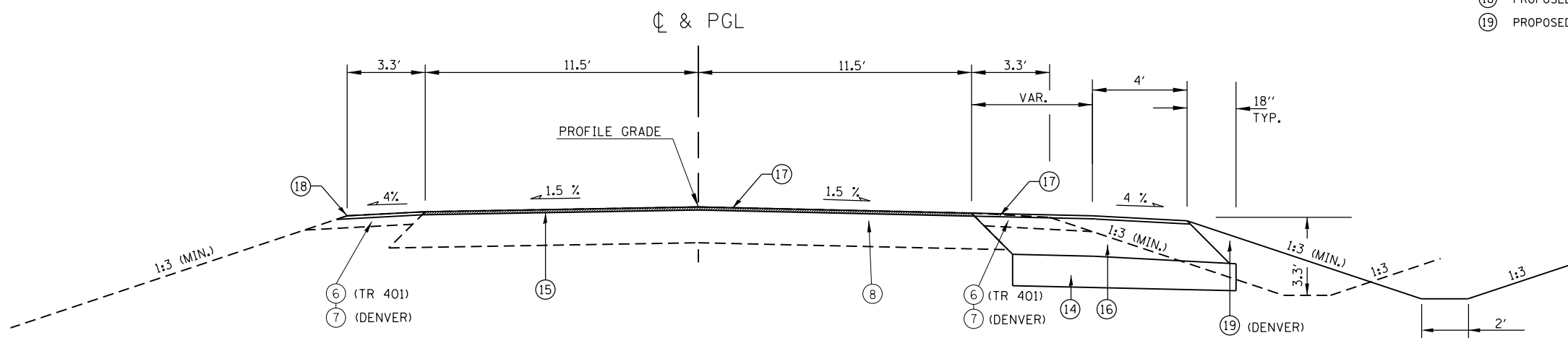
TYPICAL SECTION FAP 733 (IL 94)
STA. 50+48.00 TO STA. 52+47.30

EXISTING LEGEND

- ① EXISTING LIME MODIFIED SOIL, 11 3/4"
- ② EXISTING BITUMINOUS CONCRETE PAVEMENT (FULL-DEPTH), 13 1/4"
- ③ EXISTING PIPE UNDERDRAINS, 4"
- ④ EXISTING SUB-BASE GRANULAR MATERIAL TYPE C, 5 1/2"
- ⑤ EXISTING BITUMINOUS SHOULDERS, 7 3/4", WITH RUMBLE STRIPS
- ⑥ EXISTING AGGREGATE SHOULDERS, TYPE B
- ⑦ EXISTING EARTH SHOULDERS
- ⑧ EXISTING BITUMINOUS CONCRETE PAVEMENT (FULL-DEPTH), 11 3/4"

PROPOSED LEGEND

- ⑬ PROPOSED PAVED SHOULDER REMOVAL
- ⑭ PROPOSED SUBBASE GRANULAR MATERIAL, TYPE A, 8"
- ⑮ PROPOSED HOT-MIX ASPHALT SURFACE REMOVAL, 1 1/2"
- ⑯ PROPOSED HOT-MIX ASPHALT BASE COURSE, 11 3/4"
- ⑰ PROPOSED HOT-MIX ASPHALT SURFACE COURSE, MIX "C", N50, 1 1/2"
- ⑱ PROPOSED AGGREGATE SHOULDERS, TYPE B
- ⑲ PROPOSED EARTH SHOULDERS



TYPICAL SECTION - TR 401 & FAS 433 (CH 19/DENVER-PLYMOUTH RD.)

STA. 10+49.00 TO STA. 12+82.50 TR 401/E. COUNTY RD
STA. 20+49.00 TO STA. 23+61.00 CH 19/DENVER RD

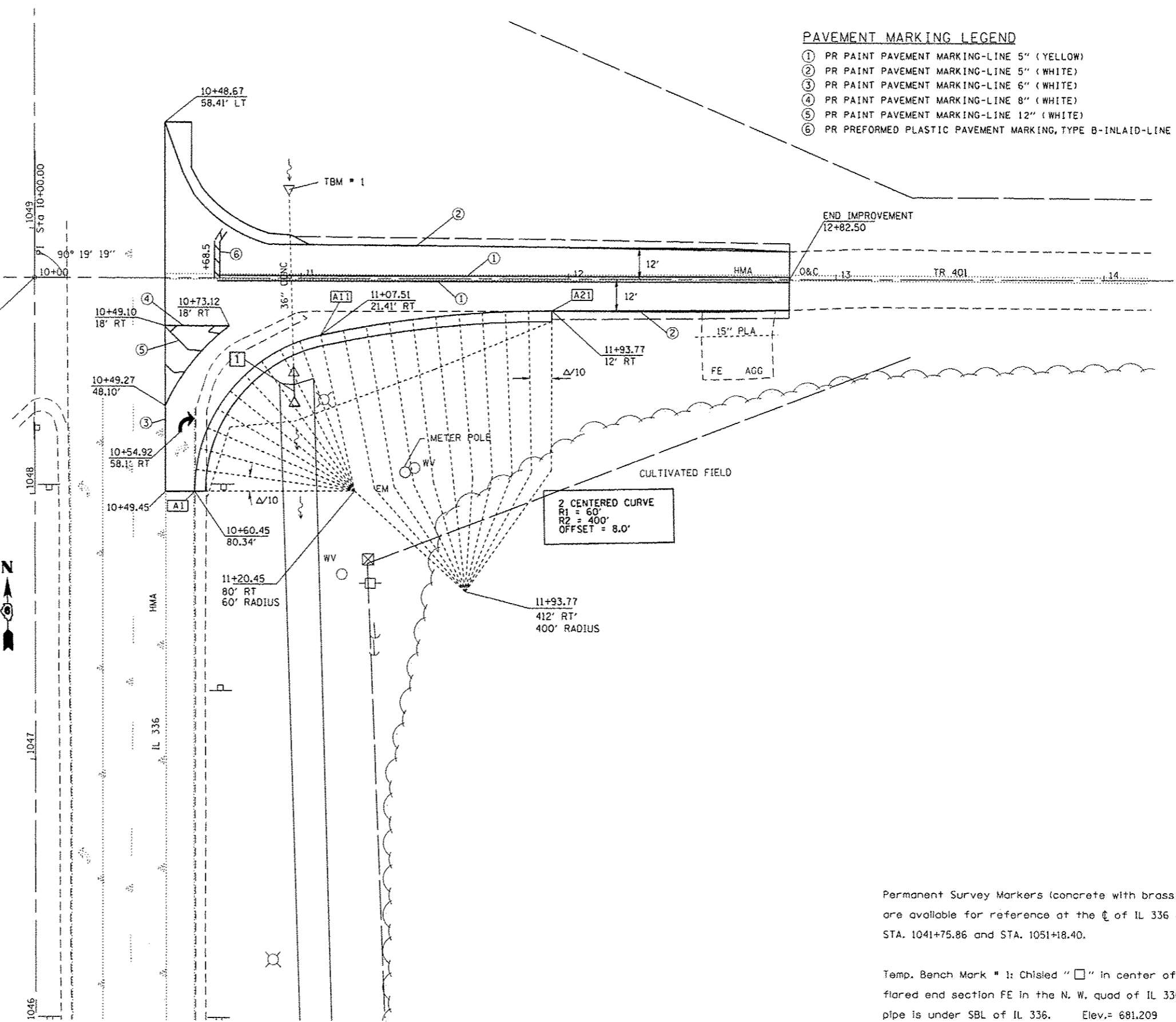
FILE NAME = c:\pwwork\pwwork\sparks\10325326\0672\FB7-sht-typical.dgn	USER NAME = sparks	DESIGNED -	REVISED -	STATE OF ILLINOIS DEPARTMENT OF TRANSPORTATION	TYPICAL SECTIONS			F.A.P. RTE.	SECTION	COUNTY	TOTAL SHEETS	SHEET NO.
	PLOT SCALE = 40.0000' / in.	CHECKED -	REVISED -					302	(34-1,34-2) N	HANCOCK	22	9
Default	PLOT DATE = Feb-13-2013 08:46:28AM	DATE -	REVISED -	SCALE:	SHEET	OF	SHEETS	STA.	TO	STA.	CONTRACT NO. 72F87 ILLINOIS FED. AID PROJECT	

PAVEMENT MARKING LEGEND

- ① PR PAINT PAVEMENT MARKING-LINE 5" (YELLOW)
- ② PR PAINT PAVEMENT MARKING-LINE 5" (WHITE)
- ③ PR PAINT PAVEMENT MARKING-LINE 6" (WHITE)
- ④ PR PAINT PAVEMENT MARKING-LINE 8" (WHITE)
- ⑤ PR PAINT PAVEMENT MARKING-LINE 12" (WHITE)
- ⑥ PR PREFORMED PLASTIC PAVEMENT MARKING, TYPE B-INLAID-LINE 24" (WHITE)

① STA. 10+97.56 RT
 REMOVE EX END SECTION
 PR PIPE CULVERT, CL A, T1, 36" x 12'
 USFL= 681.48, STA. 10+97.39, 33.27' RT
 DSFL= 681.42, STA. 10+97.74, 45.26' RT
 PRC FLARED END SECTION 36"

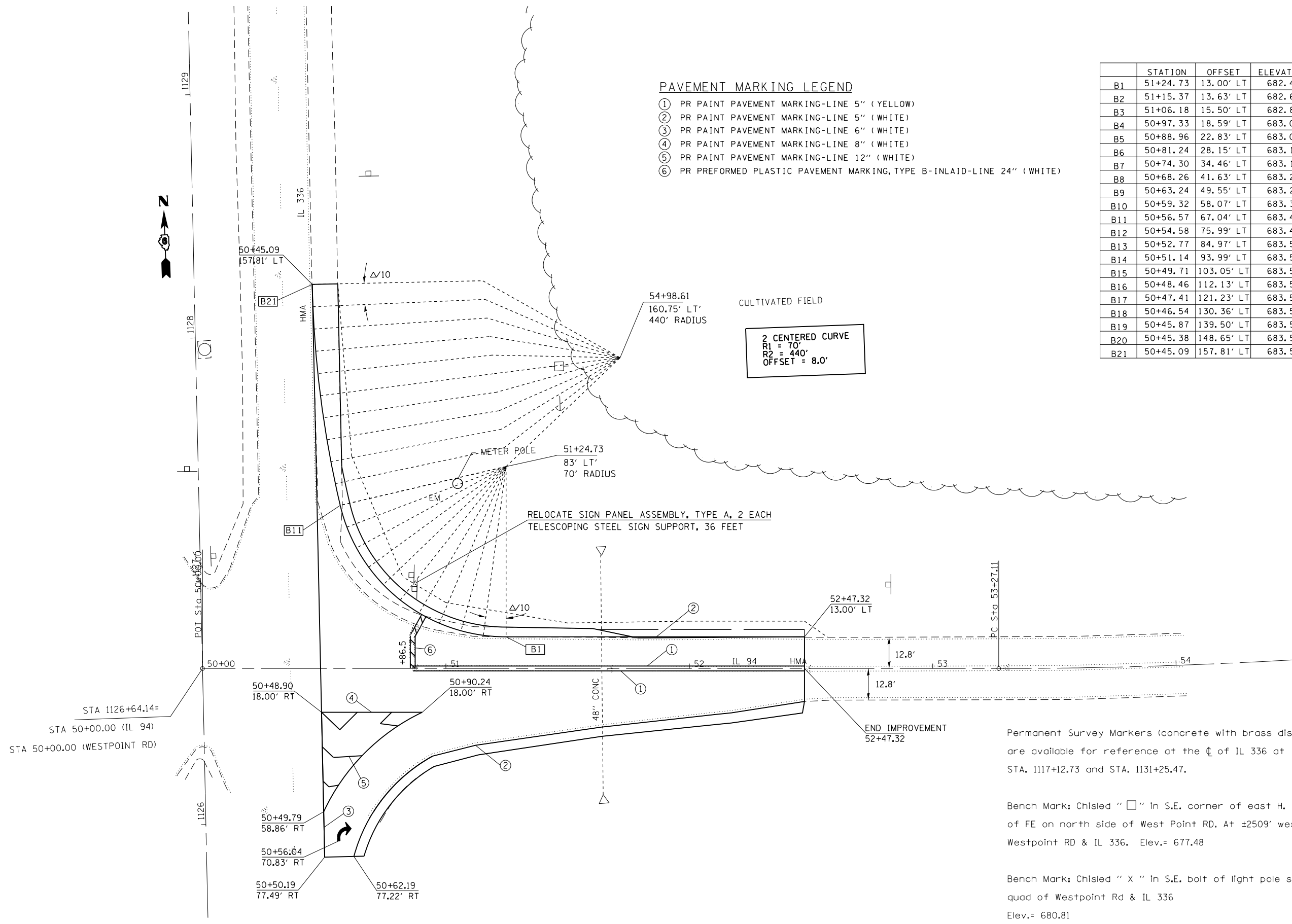
	STATION	OFFSET	ELEVATION
A1	10+60.45	80.34	686.48
A2	10+60.96	72.21	686.50
A3	10+62.56	64.22	686.49
A4	10+65.24	56.52	686.48
A5	10+68.93	49.25	686.41
A6	10+73.57	42.56	686.34
A7	10+79.07	36.55	686.26
A8	10+85.34	31.34	686.18
A9	10+92.26	27.04	686.09
A10	10+99.69	23.71	686.01
A11	11+07.51	21.41	686.00
A12	11+16.02	19.63	685.99
A13	11+24.57	18.03	685.98
A14	11+33.15	16.62	685.98
A15	11+41.75	15.40	685.97
A16	11+50.39	14.36	685.97
A17	11+59.04	13.51	685.92
A18	11+67.71	12.85	685.87
A19	11+76.39	12.38	685.82
A20	11+85.08	12.09	685.77
A21	11+93.77	12.00	685.71



Permanent Survey Markers (concrete with brass disk) are available for reference at the center of IL 336 at STA. 1041+75.86 and STA. 1051+18.40.

Temp. Bench Mark # 1: Chisled "□" in center of 24" RCCP flared end section FE in the N. W. quad of IL 336 & TR 401; pipe is under SBL of IL 336. Elev.= 681.209

FILE NAME =	USER NAME = sparksg	DESIGNED -	REVISED -	STATE OF ILLINOIS DEPARTMENT OF TRANSPORTATION	TR 401 PLAN SHEET	F.A.P. RTE.	SECTION	COUNTY	TOTAL SHEETS	SHEET NO.	
c:\pwwork\pvidot\sparksg\10832526\0672FB7-shl-plan-C-County RD-TR401.dgn	DRAWN -	REVISED -	302			(34-1,34-2) N	HANCOCK	22	10		
Default	PLOT SCALE = 48,0000 / in.	CHECKED -	REVISED -			CONTRACT NO. 72FB7					
	PLOT DATE = Mar-06-2013 09:57:22AM	DATE -	REVISED -			ILLINOIS FED. AID PROJECT					
				SCALE:	SHEET OF SHEETS	STA. TO STA.					



PAVEMENT MARKING LEGEND

- ① PR PAINT PAVEMENT MARKING-LINE 5" (YELLOW)
- ② PR PAINT PAVEMENT MARKING-LINE 5" (WHITE)
- ③ PR PAINT PAVEMENT MARKING-LINE 6" (WHITE)
- ④ PR PAINT PAVEMENT MARKING-LINE 8" (WHITE)
- ⑤ PR PAINT PAVEMENT MARKING-LINE 12" (WHITE)
- ⑥ PR PREFORMED PLASTIC PAVEMENT MARKING, TYPE B-INLAID-LINE 24" (WHITE)

	STATION	OFFSET	ELEVATION
B1	51+24.73	13.00' LT	682.49
B2	51+15.37	13.63' LT	682.67
B3	51+06.18	15.50' LT	682.85
B4	50+97.33	18.59' LT	683.00
B5	50+88.96	22.83' LT	683.06
B6	50+81.24	28.15' LT	683.12
B7	50+74.30	34.46' LT	683.17
B8	50+68.26	41.63' LT	683.23
B9	50+63.24	49.55' LT	683.29
B10	50+59.32	58.07' LT	683.35
B11	50+56.57	67.04' LT	683.40
B12	50+54.58	75.99' LT	683.46
B13	50+52.77	84.97' LT	683.52
B14	50+51.14	93.99' LT	683.52
B15	50+49.71	103.05' LT	683.53
B16	50+48.46	112.13' LT	683.53
B17	50+47.41	121.23' LT	683.53
B18	50+46.54	130.36' LT	683.53
B19	50+45.87	139.50' LT	683.54
B20	50+45.38	148.65' LT	683.54
B21	50+45.09	157.81' LT	683.54

2 CENTERED CURVE
 R1 = 70'
 R2 = 440'
 OFFSET = 8.0'

Permanent Survey Markers (concrete with brass disk) are available for reference at the \square of IL 336 at STA. 1117+12.73 and STA. 1131+25.47.

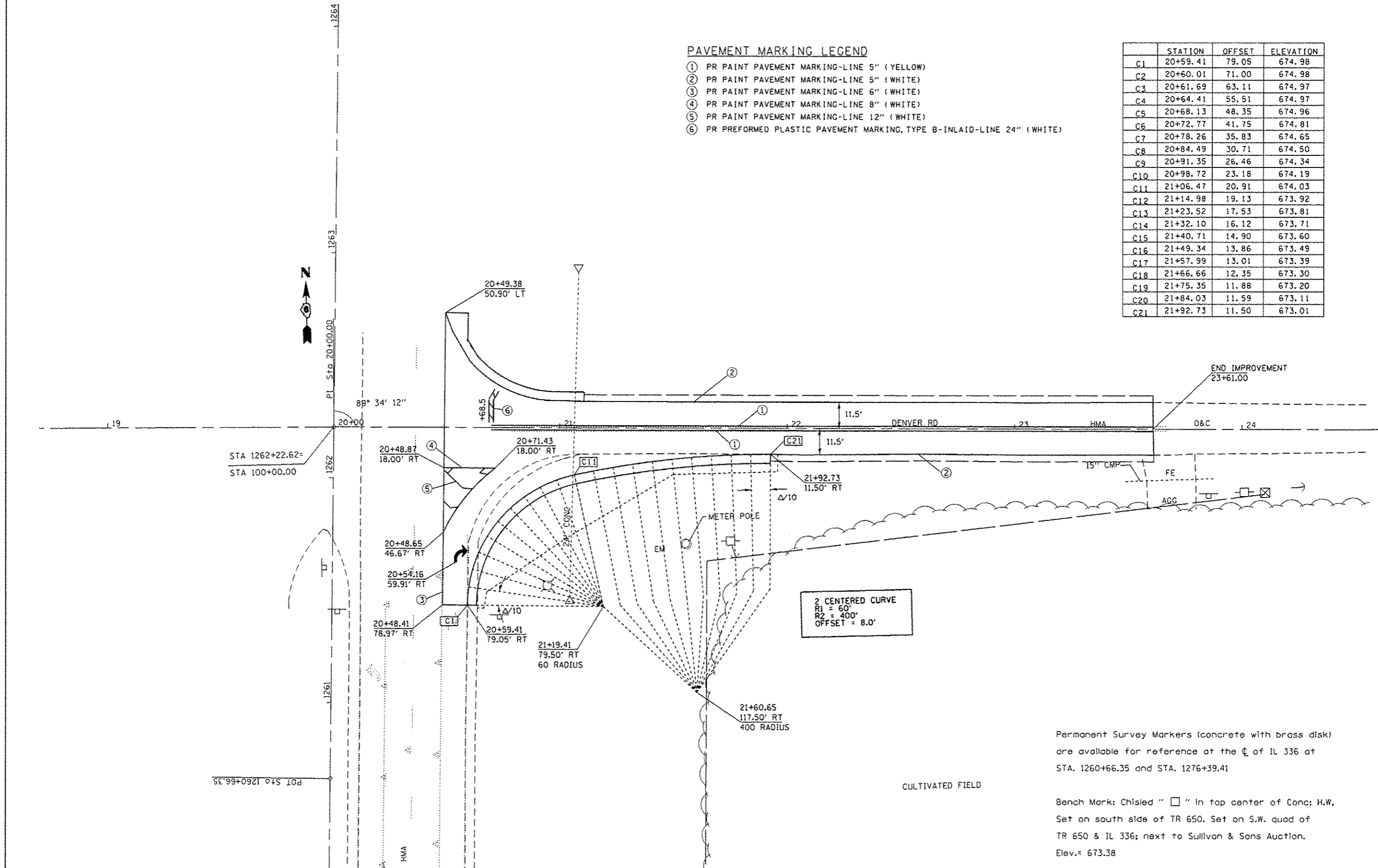
Bench Mark: Chisled " \square " in S.E. corner of east H. W. of FE on north side of West Point Rd. At \pm 2509' west of Westpoint Rd & IL 336. Elev.= 677.48

Bench Mark: Chisled " X " in S.E. bolt of light pole set in NW quad of Westpoint Rd & IL 336 Elev.= 680.81

PAVEMENT MARKING LEGEND

- ① PR PAINT PAVEMENT MARKING-LINE 5" (YELLOW)
- ② PR PAINT PAVEMENT MARKING-LINE 5" (WHITE)
- ③ PR PAINT PAVEMENT MARKING-LINE 6" (WHITE)
- ④ PR PAINT PAVEMENT MARKING-LINE 8" (WHITE)
- ⑤ PR PAINT PAVEMENT MARKING-LINE 12" (WHITE)
- ⑥ PR PREFORMED PLASTIC PAVEMENT MARKING, TYPE B-INLAID-LINE 24" (WHITE)

	STATION	OFFSET	ELEVATION
C1	20+59.41	79.05	674.98
C2	20+60.01	71.00	674.98
C3	20+61.69	63.11	674.97
C4	20+64.41	55.51	674.97
C5	20+68.13	48.35	674.96
C6	20+72.77	41.75	674.81
C7	20+78.26	35.83	674.65
C8	20+84.49	30.71	674.50
C9	20+91.35	26.46	674.34
C10	20+98.72	23.18	674.19
C11	21+06.47	20.91	674.03
C12	21+14.98	19.13	673.92
C13	21+23.52	17.53	673.81
C14	21+32.10	16.12	673.71
C15	21+40.71	14.90	673.60
C16	21+49.34	13.86	673.49
C17	21+57.99	13.01	673.39
C18	21+66.66	12.35	673.30
C19	21+75.35	11.88	673.20
C20	21+84.03	11.59	673.11
C21	21+92.73	11.50	673.01



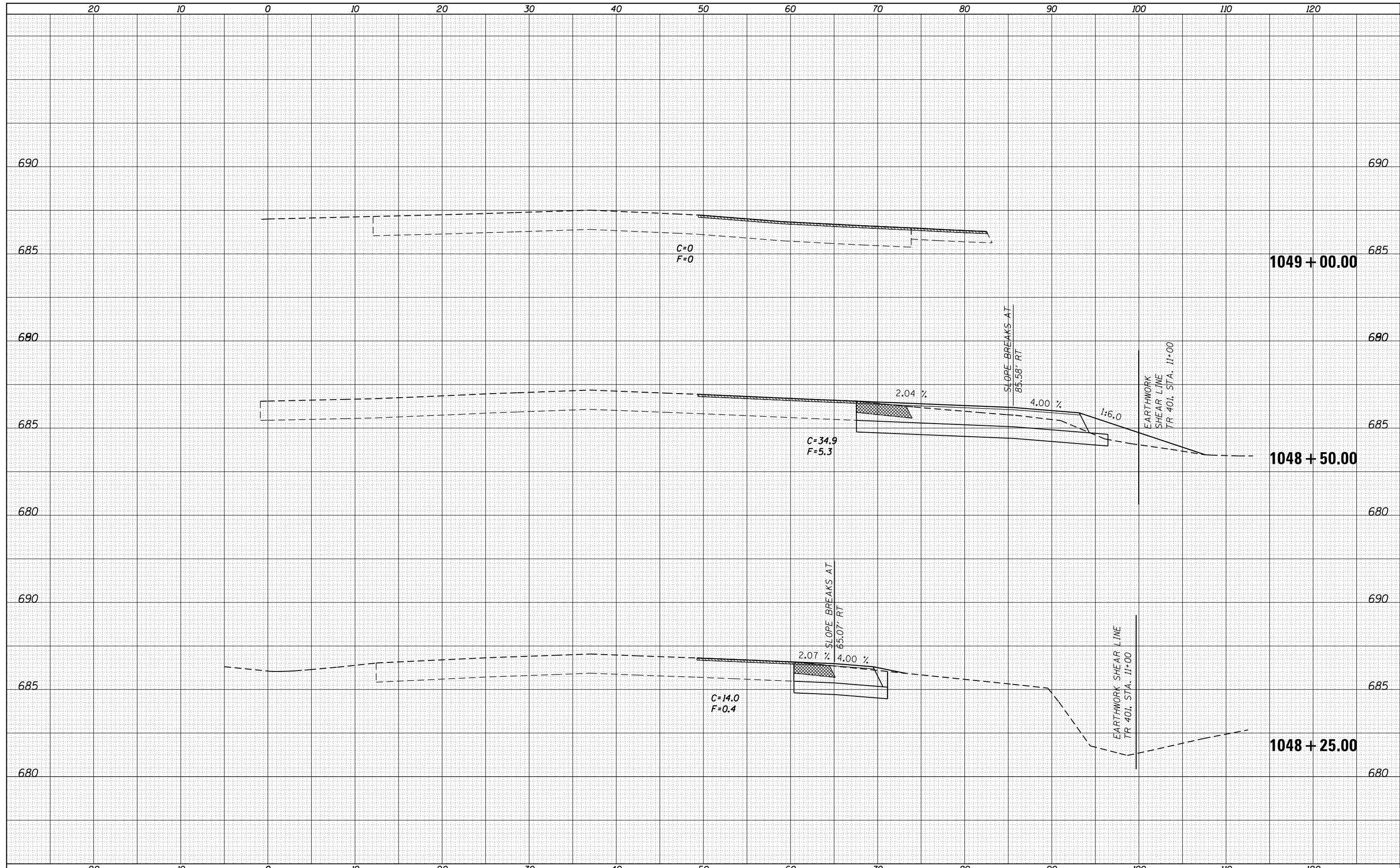
Permanent Survey Markers (concrete with brass disk) are available for reference at the C of IL 336 at STA. 1260+66.35 and STA. 1276+39.41

Bench Mark: Chisled " \square " in top center of Conc; H.W. Set on south side of TR 650. Set on S.W. quad of TR 650 & IL 336; next to Sullivan & Sons Auction. Elev. = 673.38

FILE NAME =	USER NAME = sperkagw	DESIGNED -	REVISED -	STATE OF ILLINOIS DEPARTMENT OF TRANSPORTATION	DENVER ROAD PLAN SHEET			F.A.P. RTE.	SECTION	COUNTY	TOTAL SHEETS	SHEET NO.
ci:\pawork\pridot\seperkagw\2325326\0672FB7-shs-plan-Denver RD.dgn	DRAWN -	REVISED -	302					(34-1,34-2) N	HANCOCK	22	12	
Default	PLOT SCALE = 48.0000' / in.	CHECKED -	REVISED -		SCALE:	SHEET OF SHEETS	STA. TO STA.	CONTRACT NO. 72FB7		ILLINOIS FED. AID PROJECT		
	PLOT DATE = Mar-05-2013 09:09:58AM	DATE -	REVISED -									

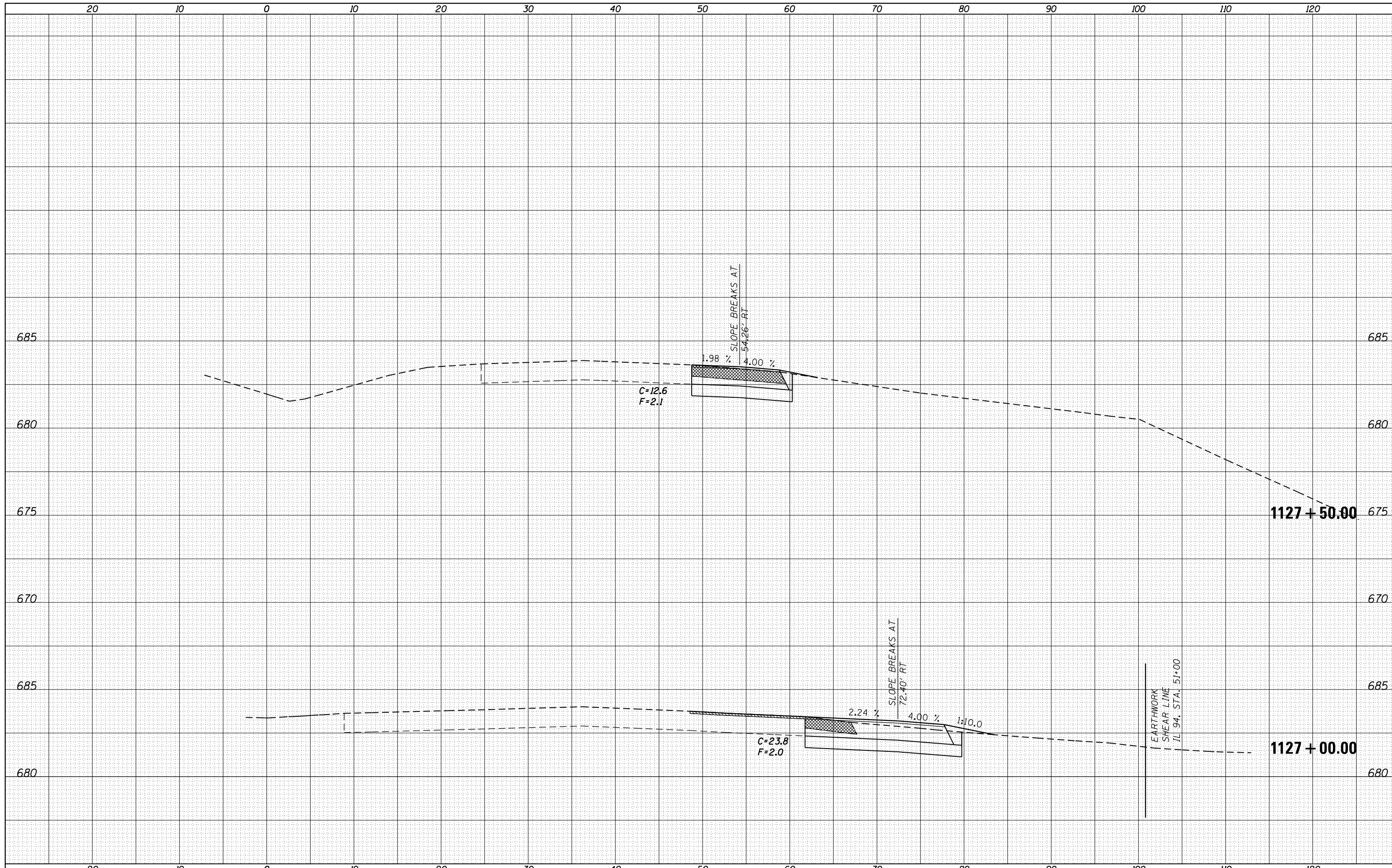
DATE	
BY	
FINAL SURVEY	SURVEYED
NOTE BOOK	PLOTTED
NO.	TEMPLATE
	AREAS
	CHECKED

DATE	
BY	
ORIGINAL SURVEY	SURVEYED
NOTE BOOK	PLOTTED
NO.	TEMPLATE
	AREAS
	CHECKED



DATE	
BY	
SURVEYED	
PLOTTED	
TEMPLATE	
NOTE BOOK	
AREAS	
CHECKED	
NO.	

DATE	
BY	
SURVEYED	
PLOTTED	
TEMPLATE	
NOTE BOOK	
AREAS	
CHECKED	
NO.	



FILE NAME =	USER NAME = sparksqw	DESIGNED -	REVISD -
es:\pw\work\pwidth\sparksqw\ad325326\0672F87-sht-xssht.dgn		DRAWN -	REVISD -
Default	PLOT SCALE = 10.0000' / in.	CHECKED -	REVISD -
	PLOT DATE = Feb-13-2013 08:46:38AM	DATE -	REVISD -

**STATE OF ILLINOIS
DEPARTMENT OF TRANSPORTATION**

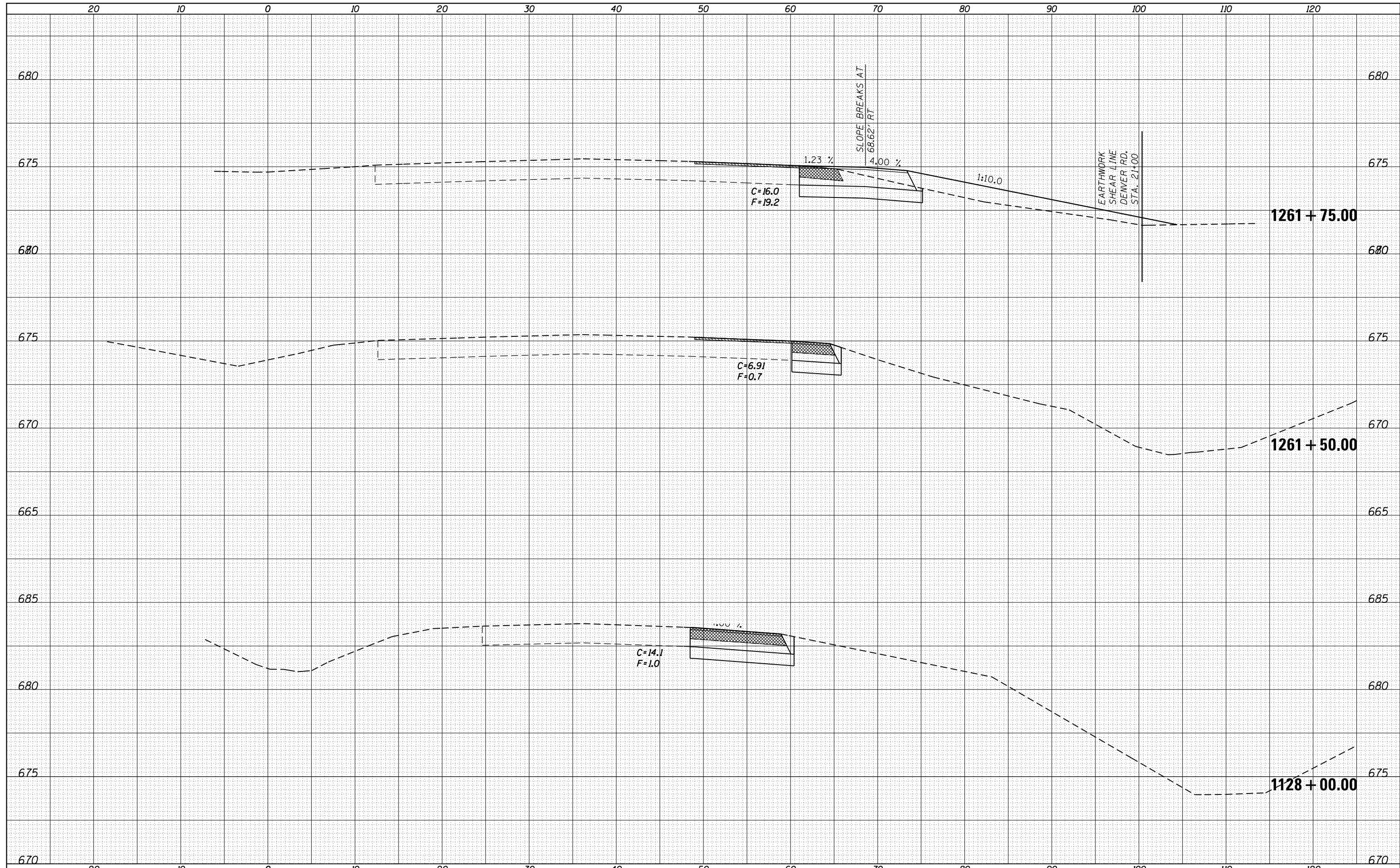
IL 336 - CROSS SECTIONS

SCALE: SHEET OF SHEETS STA. 1127+00.00 TO STA.

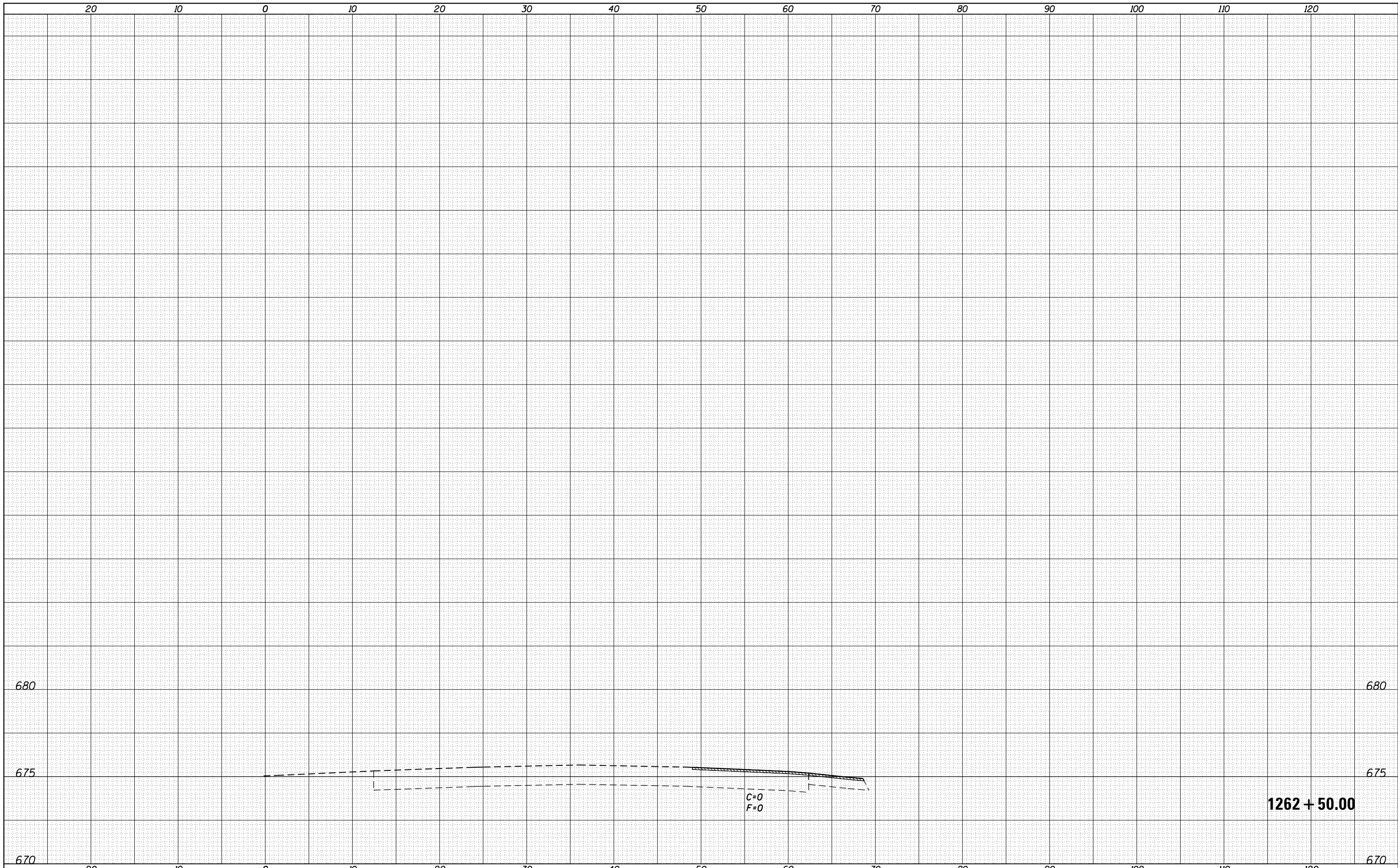
F.A.P. RTE.	SECTION	COUNTY	TOTAL SHEETS	SHEET NO.
302	(34-1,34-2) N	HANCOCK	22	14
CONTRACT NO. 72F87				
ILLINOIS FED. AID PROJECT				

DATE	
BY	
FINAL SURVEY	SURVEYED
NOTE BOOK	PLOTTED
NO.	TEMPLATE
	AREAS
	CHECKED

DATE	
BY	
ORIGINAL SURVEY	SURVEYED
NOTE BOOK	PLOTTED
NO.	TEMPLATE
	AREAS
	CHECKED



FILE NAME =	USER NAME = sparksgw	DESIGNED -	REVISIED -	STATE OF ILLINOIS DEPARTMENT OF TRANSPORTATION	IL 336 - CROSS SECTIONS			F.A.P. RTE.	SECTION	COUNTY	TOTAL SHEETS	SHEET NO.	
Default	Plot SCALE = 10.0000' / in.	CHECKED -	REVISIED -					302	(34-1,34-2) N	HANCOCK	22	15	
	PLOT DATE = Feb-13-2013 08:46:39AM	DATE -	REVISIED -		SCALE:	SHEET	OF	SHEETS	STA. 1128+00.00	TO STA.	CONTRACT NO. 72F87		
											ILLINOIS FED. AID PROJECT		



DATE	BY	SURVEYED	PLOTTED	TEMPLATE	AREAS	CHECKED
NO.		FINAL SURVEY	NOTE BOOK	AREAS		

DATE	BY	SURVEYED	PLOTTED	TEMPLATE	AREAS	CHECKED
NO.		ORIGINAL SURVEY	NOTE BOOK	AREAS		

FILE NAME =
 c:\pwork\pwork\sparksq\d0325326\0672F87-sht-xssht.dgn

USER NAME = sparksq
 PLOT SCALE = 10.0000' / in.
 PLOT DATE = Feb-13-2013 08:46:39AM

DESIGNED -
 DRAWN -
 CHECKED -
 DATE -

REVISED -
 REVISED -
 REVISED -
 REVISED -

STATE OF ILLINOIS
 DEPARTMENT OF TRANSPORTATION

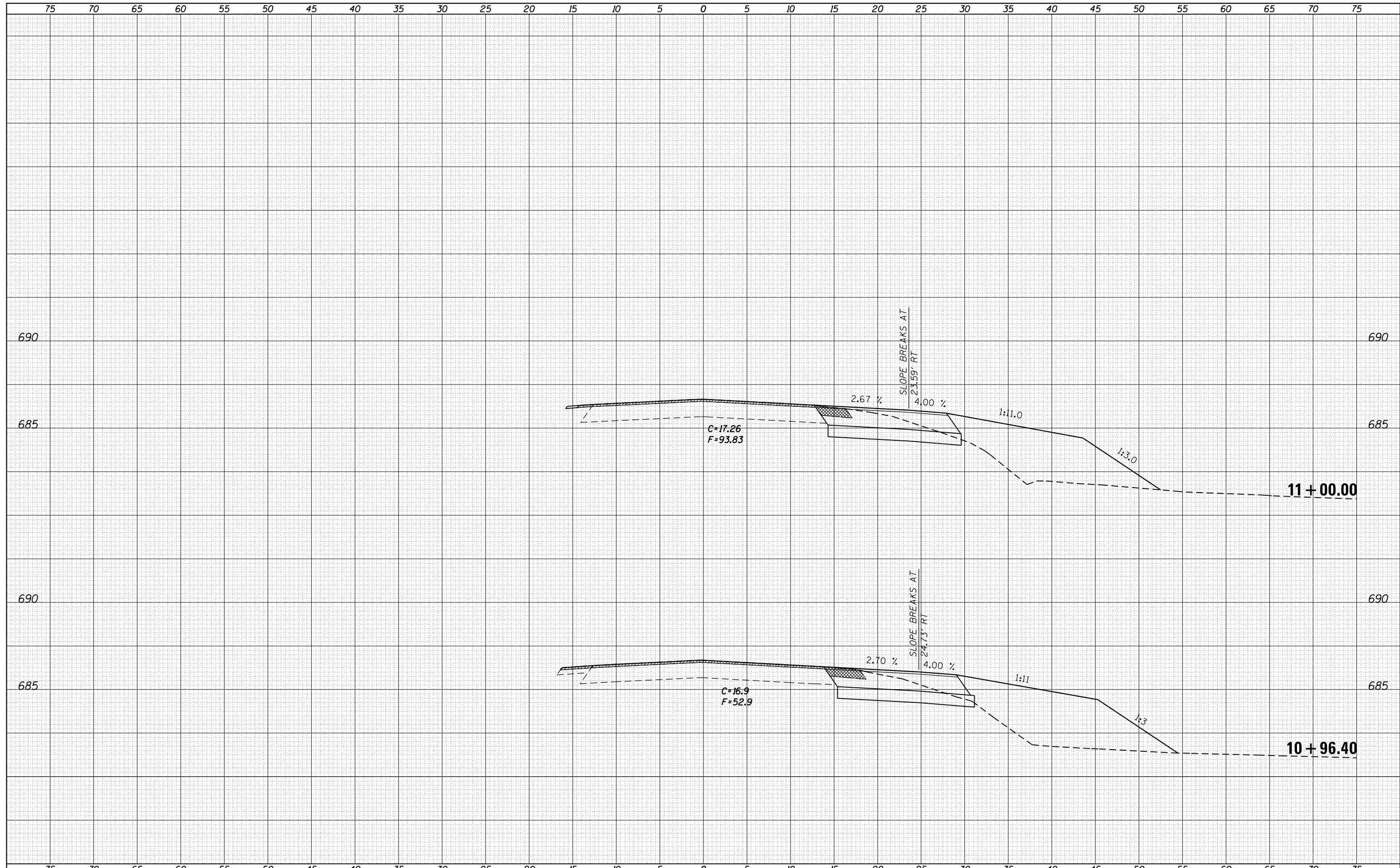
IL 336 - CROSS SECTIONS

SCALE: SHEET OF SHEETS STA. 1262+50.00 TO STA.

F.A.P. RTE.	SECTION	COUNTY	TOTAL SHEETS	SHEET NO.
302	(34-1,34-2) N	HANCOCK	22	16
ILLINOIS FED. AID PROJECT			CONTRACT NO. 72F87	

DATE	
BY	
SURVEYED	
PLOTTED	
TEMPLATE	
AREAS	
CHECKED	
FINAL SURVEY	
NOTE BOOK	
NO.	

DATE	
BY	
SURVEYED	
PLOTTED	
TEMPLATE	
AREAS	
CHECKED	
ORIGINAL SURVEY	
NOTE BOOK	
NO.	

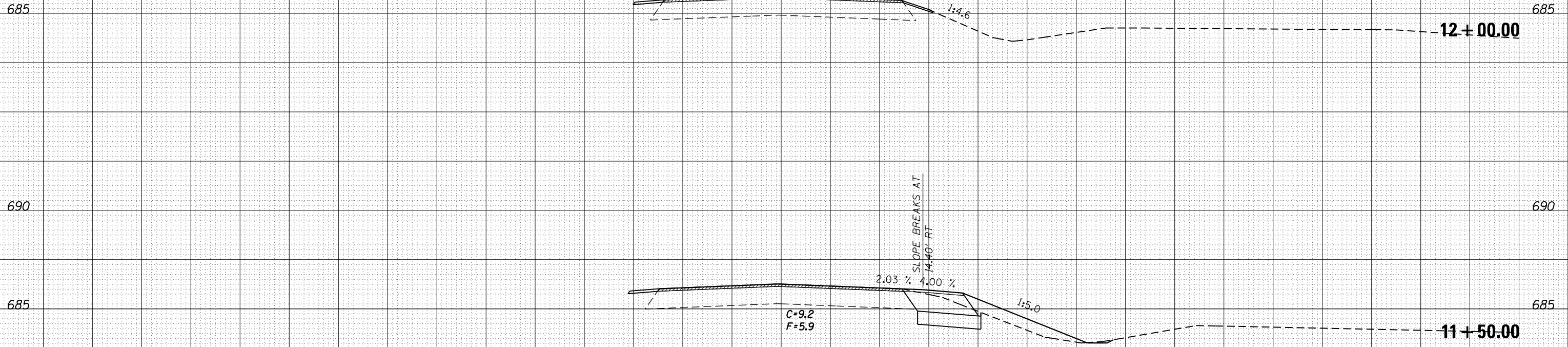


FILE NAME =	USER NAME = sparksq	DESIGNED -	REVISIED -	STATE OF ILLINOIS DEPARTMENT OF TRANSPORTATION	TR 401 - CROSS SECTIONS			F.A.P. RTE.	SECTION	COUNTY	TOTAL SHEETS	SHEET NO.
es:\pw\work\pwidthot\sparksq\d0325326\0672F87-sh	DRAWN -	REVISIED -	302					(34-1,34-2) N	HANCOCK	22	17	
Default	PLOT SCALE = 10.0000' / in.	CHECKED -	REVISIED -		CONTRACT NO. 72F87			ILLINOIS FED. AID PROJECT				
	PLOT DATE = Feb-13-2013 08:46:42AM	DATE -	REVISIED -		SCALE:	SHEET	OF	SHEETS	STA. 10+96.40	TO STA. 11+00.00		

75 70 65 60 55 50 45 40 35 30 25 20 15 10 5 0 5 10 15 20 25 30 35 40 45 50 55 60 65 70 75

DATE	
BY	
FINAL SURVEY	SURVEYED
NOTE BOOK	PLOTTED
NO.	TEMPLATE
	AREAS
	CHECKED

DATE	
BY	
ORIGINAL SURVEY	SURVEYED
NOTE BOOK	PLOTTED
NO.	TEMPLATE
	AREAS
	CHECKED



75 70 65 60 55 50 45 40 35 30 25 20 15 10 5 0 5 10 15 20 25 30 35 40 45 50 55 60 65 70 75

FILE NAME =
 c:\pw_work\pwidot\sparksgw\d0325326\0672F87-sh...
 Default

USER NAME = sparksgw
 PLOT SCALE = 10.0000 ' / in.
 PLOT DATE = Feb-13-2013 08:46:42AM

DESIGNED -
 DRAWN -
 CHECKED -
 DATE -

REVISED -
 REVISED -
 REVISED -
 REVISED -

STATE OF ILLINOIS
 DEPARTMENT OF TRANSPORTATION

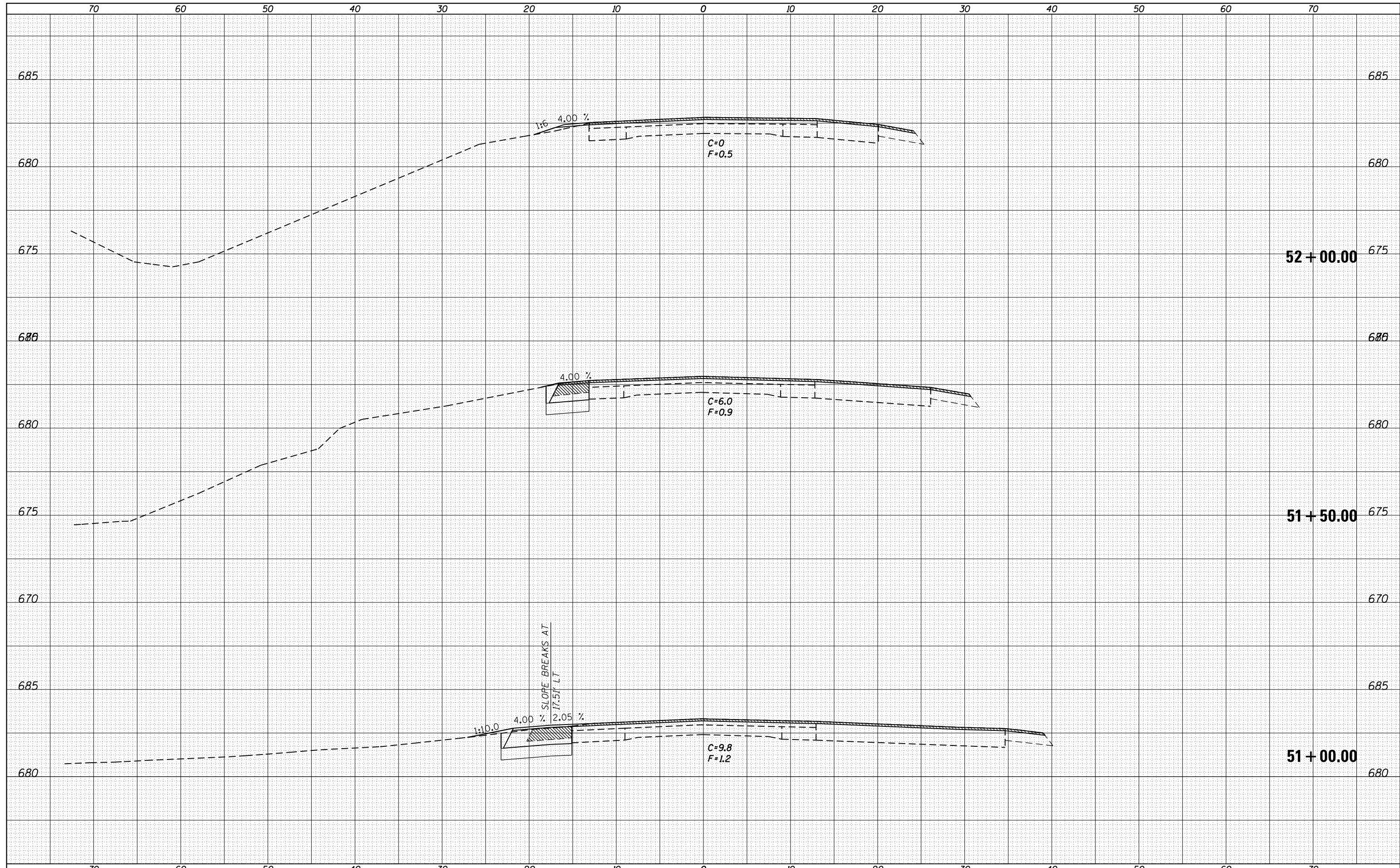
TR 401 - CROSS SECTIONS

SCALE: SHEET OF SHEETS STA. 11+50.00 TO STA. 12+00.00

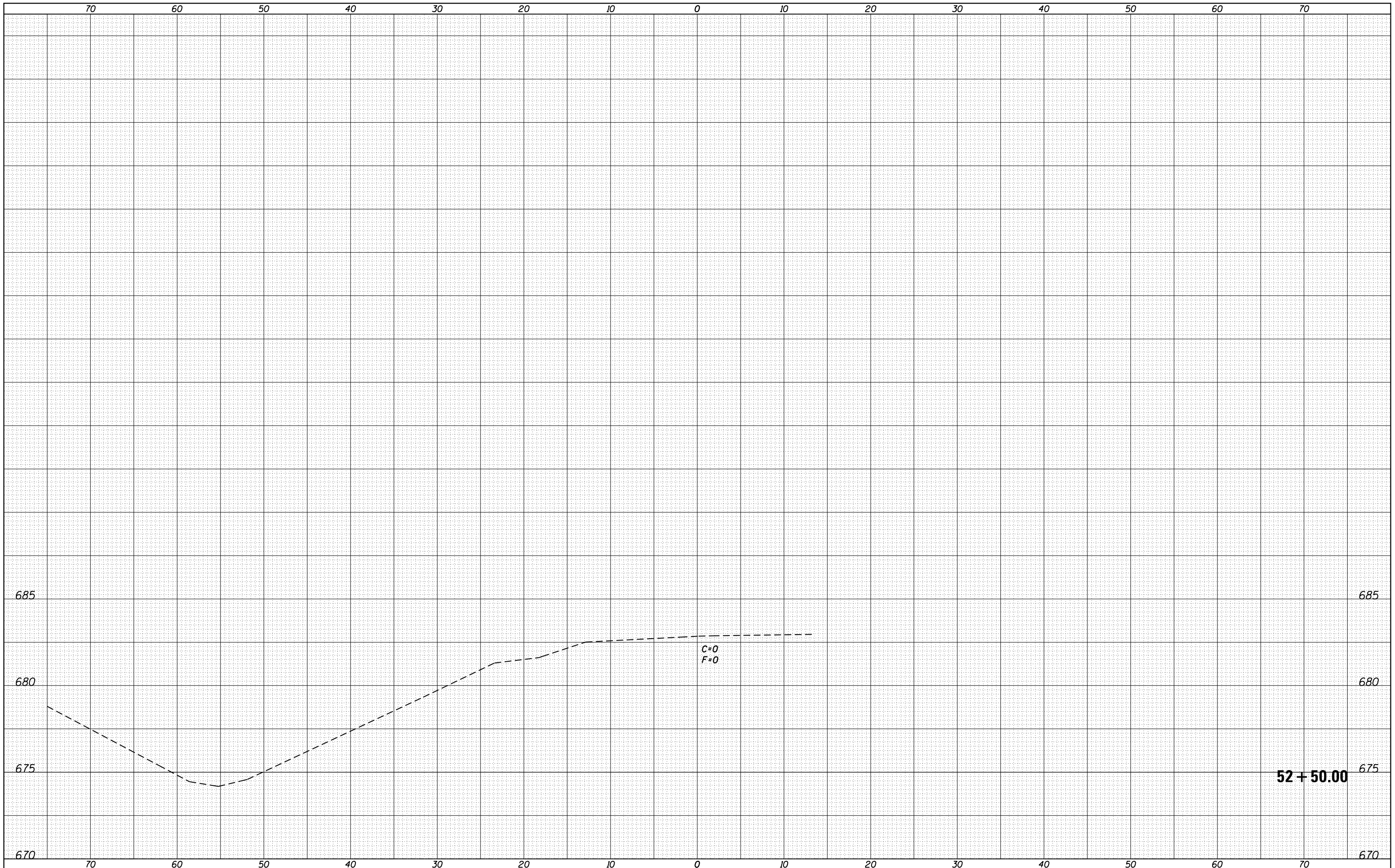
F.A.P. RTE.	SECTION	COUNTY	TOTAL SHEETS	SHEET NO.
302	(34-1,34-2) N	HANCOCK	22	18
CONTRACT NO.			72F87	
ILLINOIS FED. AID PROJECT				

DATE	
BY	
FINAL SURVEY	SURVEYED
NOTE BOOK	PLOTTED
NO.	TEMPLATE
	AREAS
	CHECKED

DATE	
BY	
ORIGINAL SURVEY	SURVEYED
NOTE BOOK	PLOTTED
NO.	TEMPLATE
	AREAS
	CHECKED



FILE NAME =	USER NAME = sparksqw	DESIGNED -	REVISIED -	STATE OF ILLINOIS DEPARTMENT OF TRANSPORTATION	IL 94 - CROSS SECTIONS			F.A.P. RTE.	SECTION	COUNTY	TOTAL SHEETS	SHEET NO.
Default	Plot SCALE = 10.0000' / in.	DRAWN -	REVISIED -					302	(34-1,34-2) N	HANCOCK	22	19
	PLOT DATE = Feb-13-2013 08:46:45AM	CHECKED -	REVISIED -		SCALE: SHEET OF SHEETS STA. 51+00.00 TO STA.			CONTRACT NO. 72F87				
		DATE -	REVISIED -					ILLINOIS FED. AID PROJECT				



FINAL SURVEY NO.	SURVEYED PLOTTED	DATE
NOTE BOOK	TEMPLATE	
	AREAS CHECKED	

ORIGINAL SURVEY NO.	SURVEYED PLOTTED	DATE
NOTE BOOK	TEMPLATE	
	AREAS CHECKED	

FILE NAME =
 c:\pwork\pwork\sparks\ad0325326\0672f87-sh...
 Default

USER NAME = sparks
 PLOT SCALE = 10.0000 / in.
 PLOT DATE = Feb-13-2013 08:46:45AM

DESIGNED -
 DRAWN -
 CHECKED -
 DATE -

REVISED -
 REVISED -
 REVISED -
 REVISED -

STATE OF ILLINOIS
 DEPARTMENT OF TRANSPORTATION

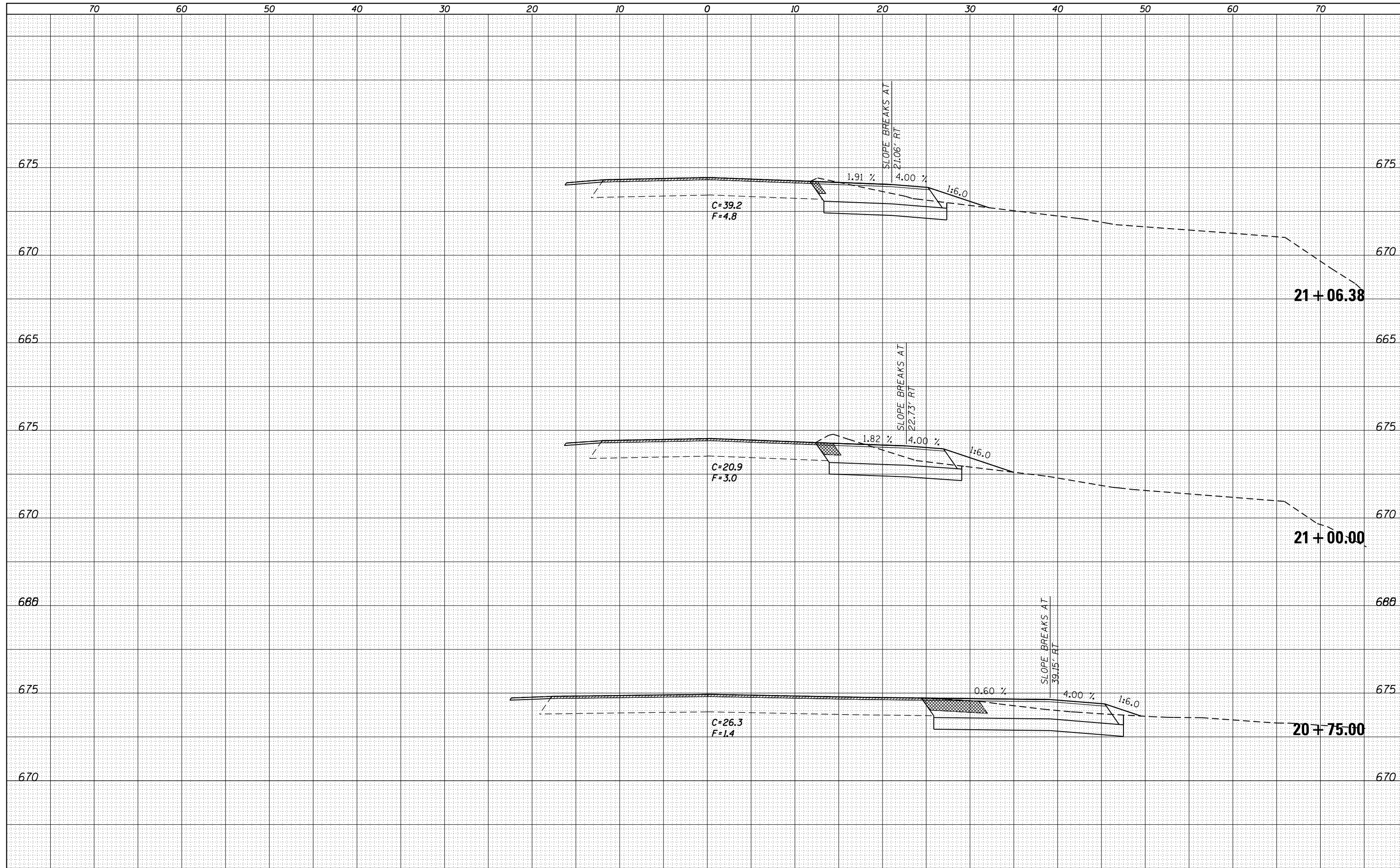
IL 94 - CROSS SECTIONS

SCALE: SHEET OF SHEETS STA. 52+50.00 TO STA.

F.A.P. RTE.	SECTION	COUNTY	TOTAL SHEETS	SHEET NO.
302	(34-1,34-2) N	HANCOCK	22	20
			CONTRACT NO. 72FB7	
ILLINOIS FED. AID PROJECT				

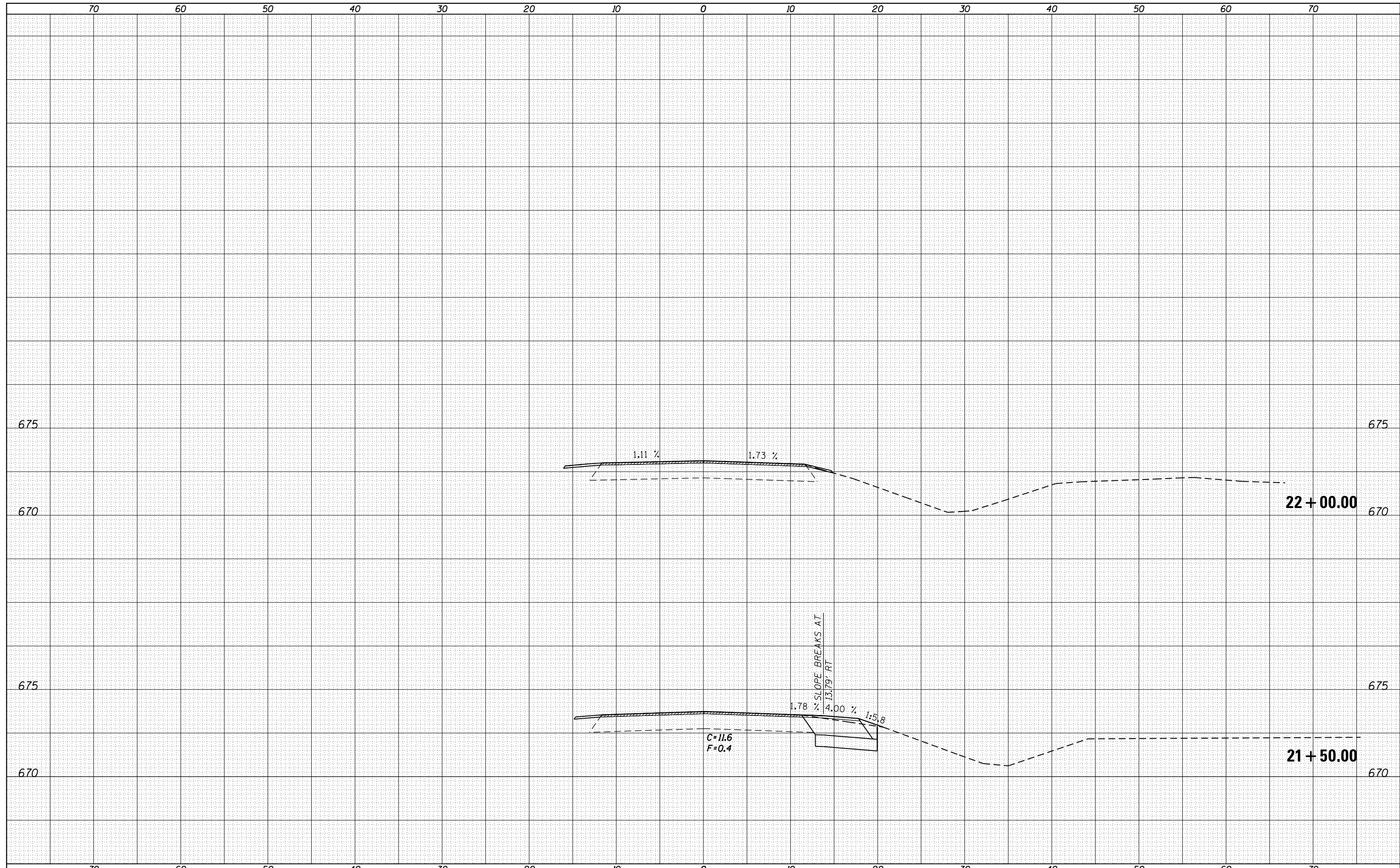
DATE	
BY	
FINAL SURVEY NO.	
SURVEYED	
PLOTTED	
TEMPLATE	
NOTE BOOK	
AREAS CHECKED	

DATE	
BY	
ORIGINAL SURVEY NO.	
SURVEYED	
PLOTTED	
TEMPLATE	
NOTE BOOK	
AREAS CHECKED	



DATE	
BY	
SURVEYED	
PLOTTED	
TEMPLATE	
AREAS	
CHECKED	
FINAL SURVEY NOTE BOOK NO.	

DATE	
BY	
SURVEYED	
PLOTTED	
TEMPLATE	
AREAS	
CHECKED	
ORIGINAL SURVEY NOTE BOOK NO.	



FILE NAME =	USER NAME = sparksgw	DESIGNED -	REVISIED -	STATE OF ILLINOIS DEPARTMENT OF TRANSPORTATION	DENVER RD. - CROSS SECTIONS			F.A.P. RTE.	SECTION	COUNTY	TOTAL SHEETS	SHEET NO.
Default	Plot Scale = 10.0000' / in.	CHECKED -	REVISIED -					302	(34-1,34-2) N	HANCOCK	22	22
	Plot Date = Feb-13-2013 08:46:48AM	DATE -	REVISIED -					CONTRACT NO. 72F87			ILLINOIS FED. AID PROJECT	
								SCALE:	SHEET OF SHEETS	STA. 21+50.00 TO STA.		