

STATE OF ILLINOIS  
DEPARTMENT OF TRANSPORTATION  
DIVISION OF HIGHWAYS

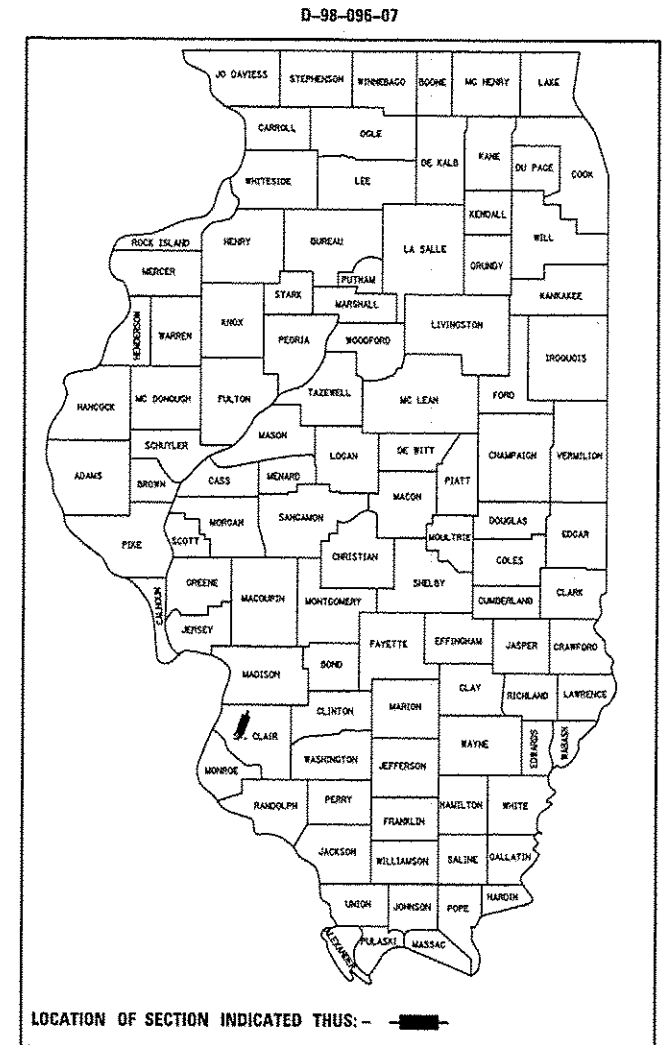
**PROPOSED  
HIGHWAY PLANS**

FAI ROUTE 255 (I-255)  
SECTION 82-2HB-2-1  
PROJECT NHPP-0255(005)  
JOINT REPAIR AND HMA OVERLAY  
AND WATERPROOFING MEMBRANE  
ST. CLAIR COUNTY

C-98-100-07

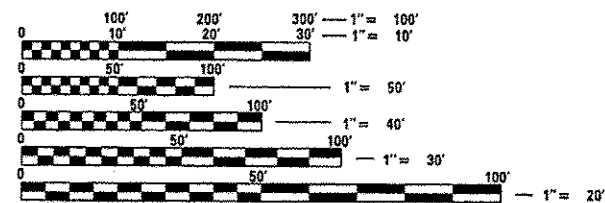
FAI RTE.	SECTION	COUNTY	TOTAL SHEETS	SHEET NO.
255	82-2HB-2-1	ST. CLAIR	54	1
		ILLINOIS	CONTRACT NO. 76B21	

FOR INDEX OF SHEETS, SEE SHEET NO. 2



PROJECT LOCATION  
STA. 1051 + 31.83  
LATITUDE: 38.618475  
LONGITUDE: 90.068497

ALLEN HENDERSON & ASSOCIATES, INC.

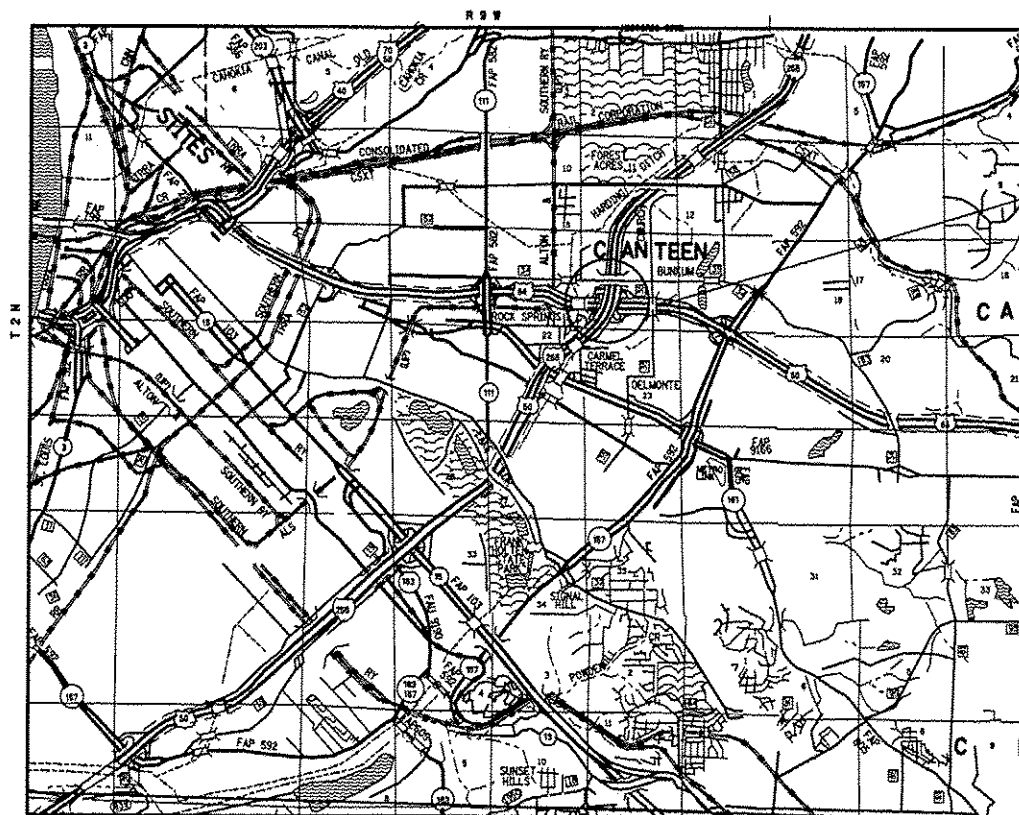


FULL SIZE PLANS HAVE BEEN PREPARED USING STANDARD ENGINEERING SCALES. REDUCED SIZED PLANS WILL NOT CONFORM TO STANDARD SCALES. IN MAKING MEASUREMENTS ON REDUCED PLANS, THE ABOVE SCALES MAY BE USED.

J.U.L.I.E.  
JOINT UTILITY LOCATION INFORMATION FOR EXCAVATION  
1-800-892-0123  
OR 811

PROJECT ENGINEER: PATTI LEBEAU (618) 346-3129  
PROJECT MANAGER: BILLIE OWEN (618) 346-3186

CONTRACT NO. 76B21



0 MI 1 MI 2 MI 3 MI  
1" = 1 MILE  
GROSS LENGTH = 369.93 FT. = 0.07 MILE  
NET LENGTH = 369.93 FT. = 0.07 MILE

STATE OF ILLINOIS  
DEPARTMENT OF TRANSPORTATION  
DIVISION OF HIGHWAYS

SUBMITTED December 19 20 12  
*[Signature]*  
DEPUTY DIRECTOR OF HIGHWAYS, REGION 5 ENGINEER

March 22 20 13  
*[Signature]*  
ENGINEER OF DESIGN AND ENVIRONMENT

March 22 20 13  
*[Signature]*  
DIRECTOR OF HIGHWAYS, CHIEF ENGINEER

PRINTED BY THE AUTHORITY  
OF THE STATE OF ILLINOIS