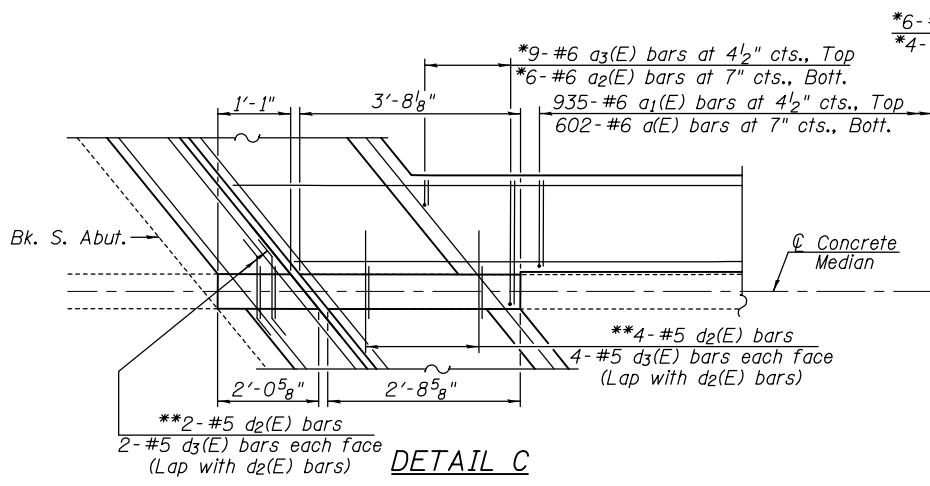
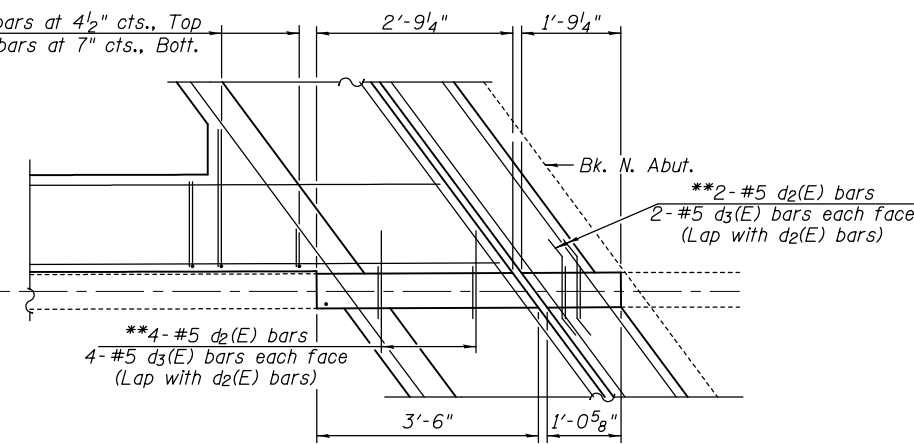


PROPOSED PARTIAL PLAN

* Cut bars in field to fit skew.
 ** Bend bars in field to fit skew.



DETAIL C



DETAIL D

MIN. BAR LAP

#5 = 3'-3"
 #6 = 3'-10"

NOTES

Bars indicated thus 2x2-#6 etc. indicates 2 lines of bars with 2 lengths per line.
 See Sheet 17 of 22 for Section Views
 Dimensions are based on a Rolled Railed Strip Seal Joint. If the Contractor elects to use the Welded Strip Seal Joint, deck dimensions may require adjustments. See sheet 18 of 22 for details.

NORTH BOUND LANES - SUPERSTRUCTURE DETAILS
 S.N. 082-0241 (NB) & S.N. 082-0242 (SB)

FILE NAME =	USER NAME =	DESIGNED -	REVISED -	Allen Henderson & Associates, Inc. Civil and Structural Engineers Springfield, IL 62703 Phone: (217)544-8033 IL Design Firm No. 184-001907	NORTH BOUND LANES - SUPERSTRUCTURE DETAILS SHEET NO. 16 OF 22 SHEETS	F.A.I. RTE.	SECTION	COUNTY	TOTAL SHEETS	SHEET NO.	
		CHECKED -	REVISED -			255	82-2HB-2-1	ST. CLAIR	54	48	
PLOT SCALE =		DRAWN -	REVISED -			CONTRACT NO. 10021					
PLOT DATE =		CHECKED -	REVISED -			ILLINOIS FED. AID PROJECT					