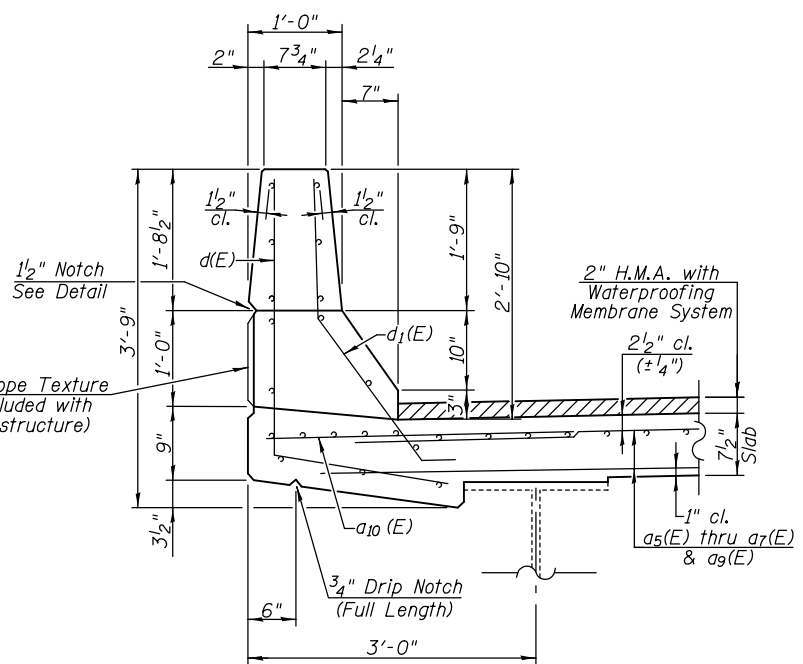
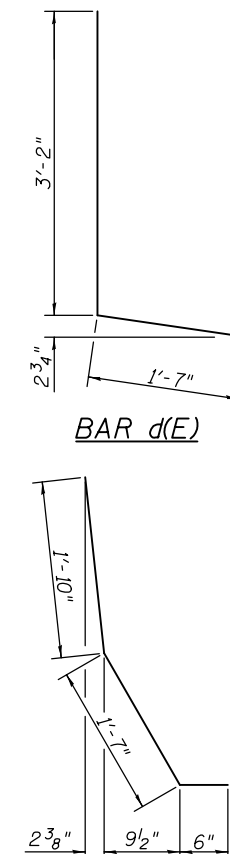


SECTION A-A
(Horiz. dim. at Rt. L's)

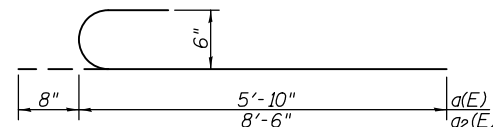


SECTION THRU PARAPET



BAR d(E)

BAR d1(E)



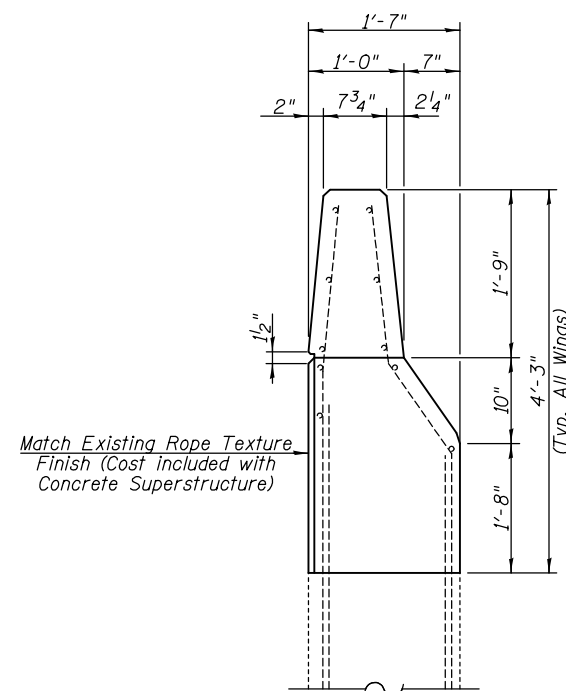
BARS a(E) & a2(E)

**SOUTH BOUND LANES
SUPERSTRUCTURE
BILL OF MATERIAL**

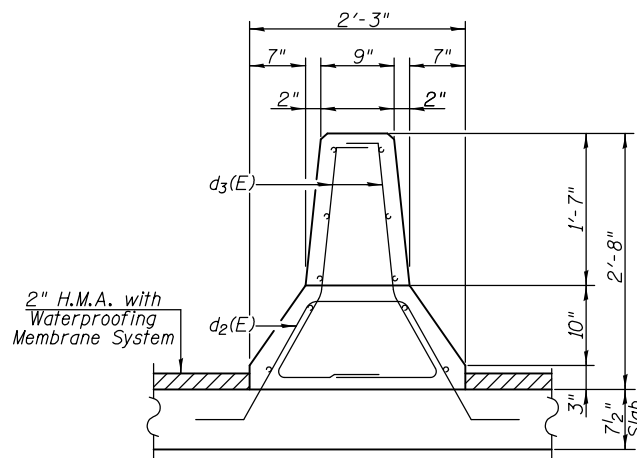
Bar	No.	Size	Length	Shape
a(E)	604	#6	6'-6"	C
a1(E)	940	#6	5'-10"	—
a2(E)	10	#6	9'-2"	C
a3(E)	16	#6	8'-6"	—
a4(E)	40	#5	33'-8"	—
a5(E)	10	#5	32'-6"	—
a6(E)	10	#5	31'-6"	—
a7(E)	10	#5	24'-2"	—
a8(E)	10	#5	21'-9"	—
a10(E)	20	#6	6'-0"	—
b(E)	90	#6	27'-10"	—
b1(E)	30	#6	32'-6"	—
b2(E)	96	#6	33'-11"	—
d(E)	12	#4	4'-9"	L
d1(E)	12	#5	3'-11"	—
d2(E)	12	#5	4'-11"	—
d3(E)	24	#5	4'-1"	—
h(E)	16	#6	33'-8"	—
h1(E)	4	#6	33'-6"	—
h2(E)	4	#6	32'-4"	—
h3(E)	4	#6	25'-6"	—
h4(E)	4	#6	22'-9"	—
Reinforcement Bars, Epoxy Coated				Pound 29,070
Concrete Superstructure				Cu. Yds. 104.4

**NORTH BOUND LANES
SUPERSTRUCTURE
BILL OF MATERIAL**

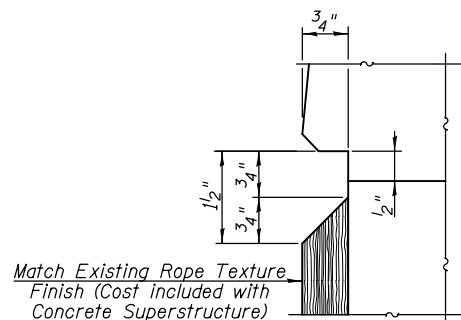
Bar	No.	Size	Length	Shape
a(E)	602	#6	6'-6"	C
a1(E)	935	#6	5'-10"	—
a2(E)	10	#6	9'-2"	C
a3(E)	15	#6	8'-6"	—
a4(E)	40	#5	33'-8"	—
a5(E)	10	#5	32'-6"	—
a6(E)	10	#5	31'-6"	—
a7(E)	10	#5	24'-2"	—
a9(E)	10	#5	21'-0"	—
a10(E)	20	#6	6'-0"	—
b(E)	90	#6	27'-10"	—
b1(E)	30	#6	32'-6"	—
b2(E)	96	#6	33'-11"	—
d(E)	12	#4	4'-9"	L
d1(E)	12	#5	3'-11"	—
d2(E)	12	#5	4'-11"	—
d3(E)	24	#5	4'-1"	—
h(E)	16	#6	33'-8"	—
h1(E)	4	#6	33'-6"	—
h2(E)	4	#6	32'-4"	—
h3(E)	4	#6	25'-6"	—
h5(E)	4	#6	21'-4"	—
Reinforcement Bars, Epoxy Coated				Pound 28,980
Concrete Superstructure				Cu. Yds. 103.6



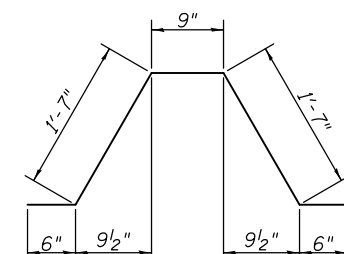
SECTION THRU WINGWALL



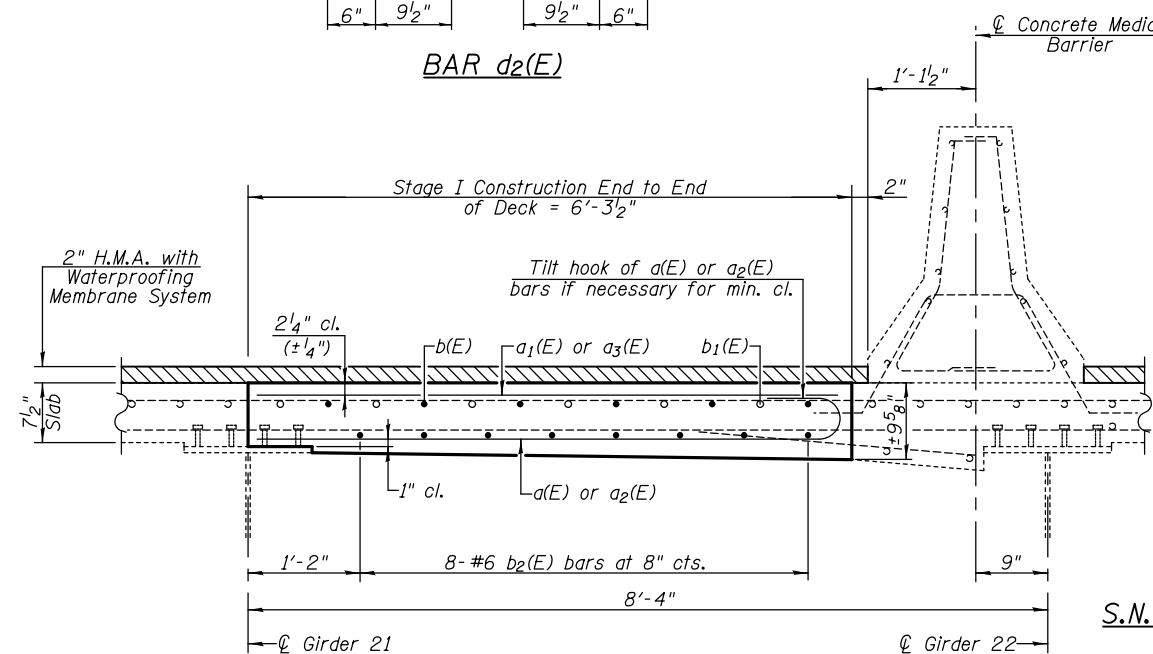
SECTION THRU CONCRETE MEDIAN



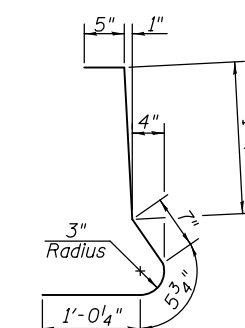
NOTCH DETAIL



BAR d2(E)



SECTION B-B



BAR d3(E)

NOTES
All transverse dimensions are measured along the radii of F.A.I. Rt. 255 curves except as noted.
Dimensions are based on a Rolled Rail Strip Seal Joint. If the Contractor elects to use the Welded Strip Seal Joint, deck dimensions may require adjustments.

**NORTH BOUND LANES -
SUPERSTRUCTURE DETAILS
S.N. 082-0241 (NB) & S.N. 082-0242 (SB)**