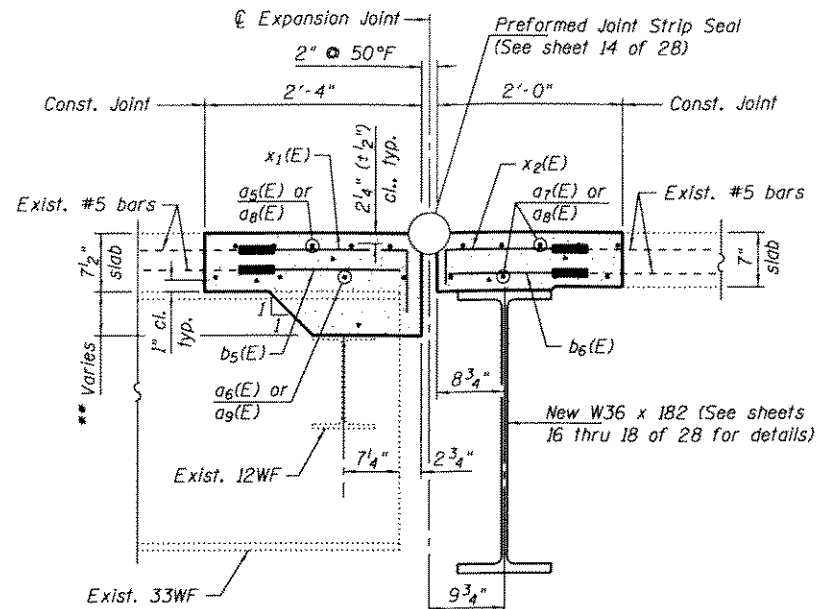
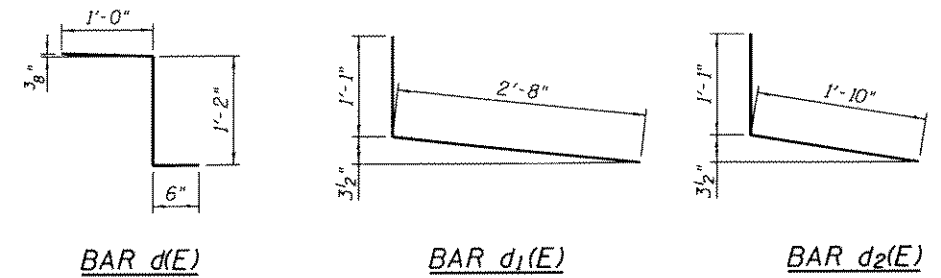


SECTION A-A
(Showing Removal)



SECTION B-B
(Showing Replacement)

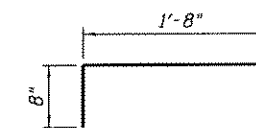
** Depth of Corbel to be reconstructed, 6 1/2" max. at Bridge Crown and varies.



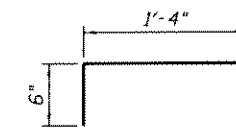
BAR d(E)

BAR d1(E)

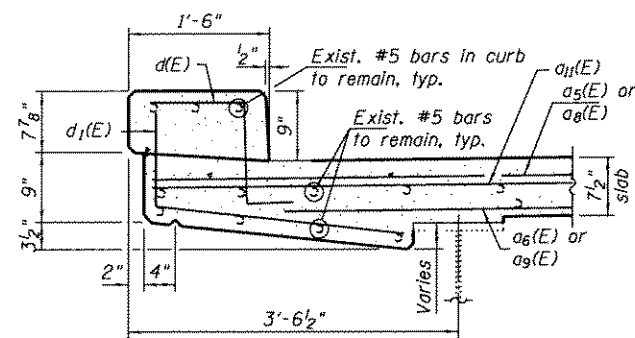
BAR d2(E)



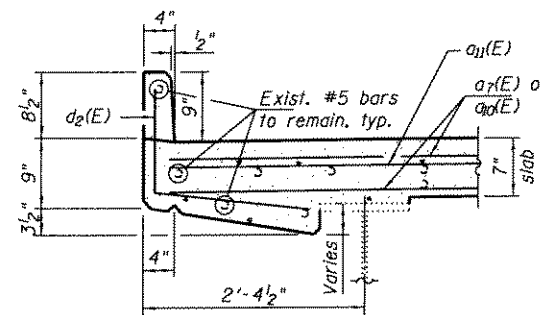
BAR x1(E)



BAR x2(E)

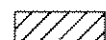


SECTION C-C



SECTION D-D

LEGEND



Full depth concrete and reinforcement removal.



Full depth concrete removal. 6" of the existing longitudinal reinforcement shall be cleaned and incorporated into the new construction with mechanical splicers, unless otherwise noted.

Note:
Work this sheet with sheet 9 of 28.

**PIER 3
BILL OF MATERIAL**

Bar	No.	Size	Length	Shape
a5(E)	6	#5	14'-10"	—
a6(E)	4	#5	14'-1"	—
a7(E)	9	#5	13'-10"	—
a8(E)	6	#5	18'-6"	—
a9(E)	4	#5	17'-9"	—
a10(E)	9	#5	17'-6"	—
a11(E)	10	#6	6'-6"	—
b5(E)	30	#5	1'-8"	—
b6(E)	34	#5	1'-4"	—
d(E)	6	#5	2'-8"	┌
d1(E)	6	#5	3'-9"	┌
d2(E)	6	#5	2'-11"	┌
x1(E)	30	#5	2'-4"	┌
x2(E)	32	#5	1'-10"	┌
Concrete Removal			Cu. Yd.	4.5
Concrete Superstructure			Cu. Yd.	4.5
Protective Coat			Sq. Yd.	16.1
Reinforcement Bars, Epoxy Coated			Pound	1,030
Bar Splicers			Each	19
Mechanical Splicers			Each	128