

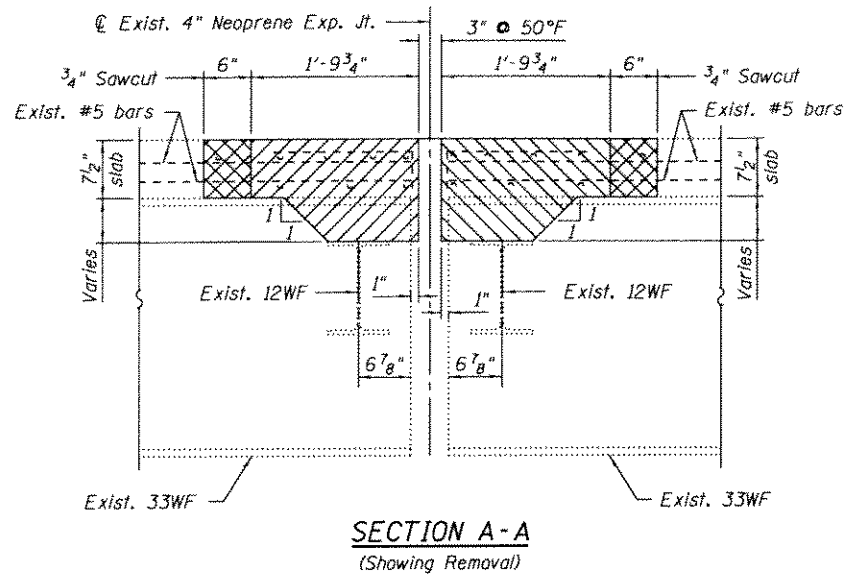
**PARTIAL PLAN**  
(Showing Joint Removal)

**PARTIAL PLAN**  
(Showing Joint Replacement)

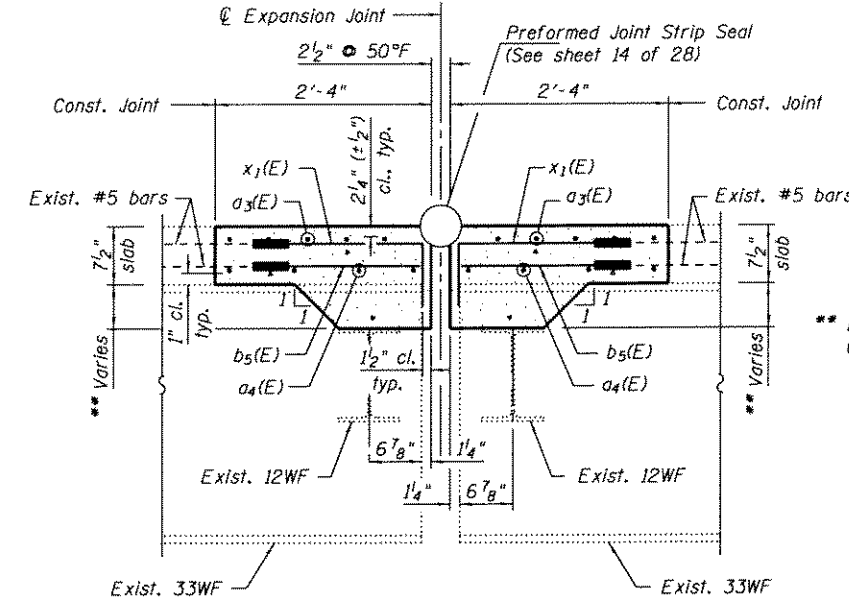
**LEGEND**

- Full depth concrete and reinforcement removal.
- Full depth concrete removal. 6" of the existing longitudinal reinforcement shall be cleaned and incorporated into the new construction with mechanical splicers, unless otherwise noted.

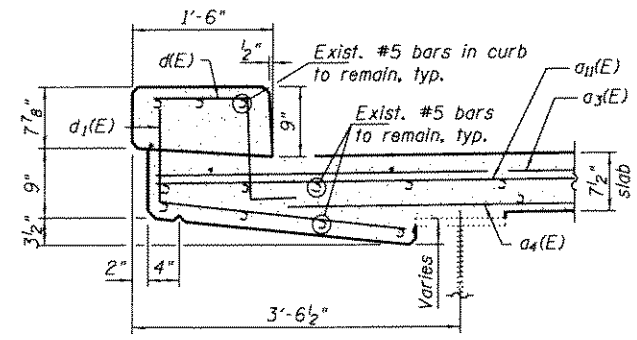
- Notes:
1. Existing reinforcement shall be cleaned, straightened (if required) and incorporated into the new construction, Cost included with Concrete Removal.
  2. Removal of existing joint system is included with Concrete Removal.
  3. See sheet 14 of 28 for Preformed Joint Strip Seal Details.
  4. See sheet 2 of 28 for Stage Construction Scheme.
  5. Dimensions are based on a Rolled Rail Strip Seal Joint. If the Contractor elects to use the Welded Rail Strip Seal Joint, deck dimensions may require adjustment to satisfy the details on sheet 14 of 28.



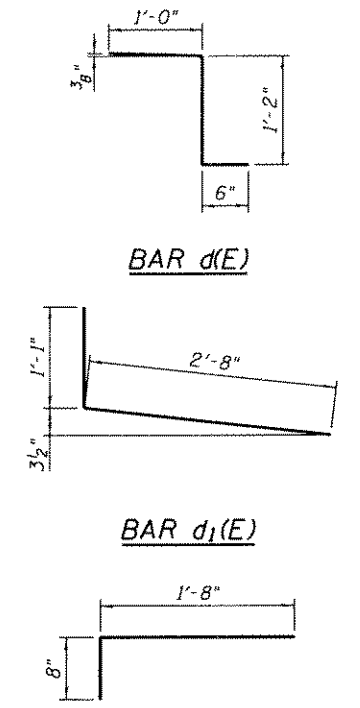
**SECTION A-A**  
(Showing Removal)



**SECTION B-B**  
(Showing Replacement)



**SECTION C-C**



\*\* Depth of Corbel to be reconstructed, 6 1/2" max. at Bridge Crown and varies.

**PIER 8**  
**BILL OF MATERIAL**

Bar	No.	Size	Length	Shape
a3(E)	24	#5	16'-8"	—
a4(E)	16	#5	15'-11"	—
a11(E)	8	#6	6'-6"	—
b5(E)	60	#5	1'-8"	—
d(E)	12	#5	2'-8"	L
d1(E)	12	#5	3'-9"	L
x1(E)	60	#5	2'-4"	L
Concrete Removal		Cu. Yd.	5.2	
Concrete Superstructure		Cu. Yd.	5.4	
Protective Coat		Sq. Yd.	17.4	
Reinforcement Bars, Epoxy Coated		Pound	1,100	
Bar Splicers		Each	20	
Mechanical Splicers		Each	120	