

STATE OF ILLINOIS
DEPARTMENT OF TRANSPORTATION
DIVISION OF HIGHWAYS

**PROPOSED
HIGHWAY PLANS**

FAI ROUTE 24 (I-24)
SECTION BSMART 2013-1

MISC. BRIDGE REPAIR AND HMA OVERLAY
MASSAC COUNTY

C-99-021-12

F.A.I. RTE.	SECTION	COUNTY	TOTAL SHEETS	SHEET NO.
I-24	BSMART 2013-1	MASSAC	23	1
ILLINOIS			CONTRACT NO. 78293	

FOR INDEX OF SHEETS, SEE SHEET NO. 2
FOR SUMMARY OF QUANTITIES, SEE SHEET NO. 3-5

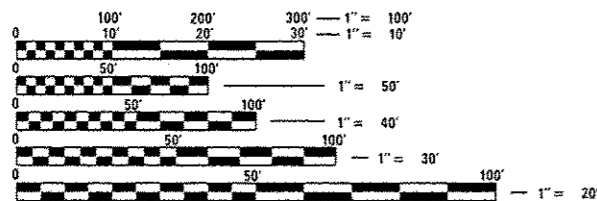
TRAFFIC DATA

I-24 TRAFFIC DATA

2012 ADT = 24,900 (TWO WAY)
17% TRUCKS

TOWNSHIPS:

COUNTY UNIT ROAD DISTRICT



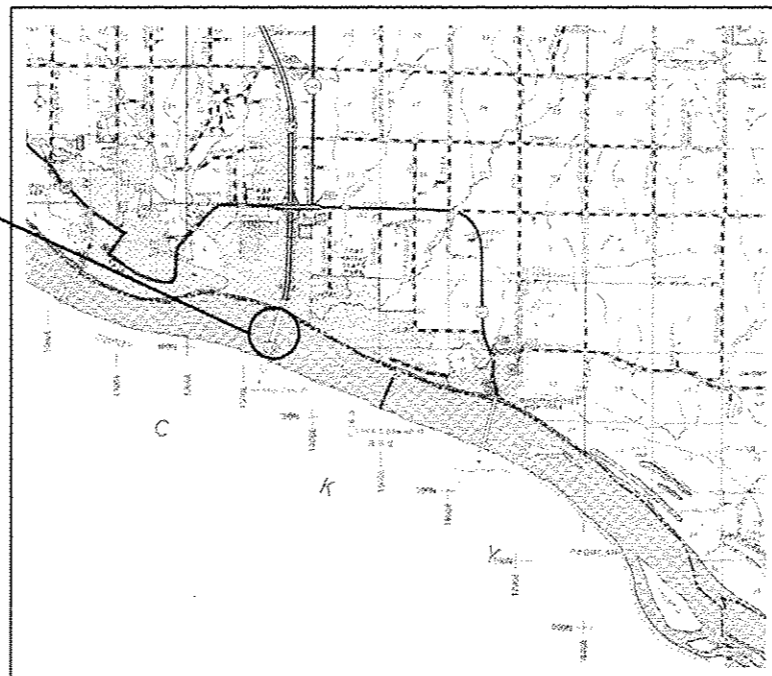
FULL SIZE PLANS HAVE BEEN PREPARED USING STANDARD ENGINEERING SCALES. REDUCED SIZED PLANS WILL NOT CONFORM TO STANDARD SCALES. IN MAKING MEASUREMENTS ON REDUCED PLANS, THE ABOVE SCALES MAY BE USED.

J.U.L.I.E.
JOINT UTILITY LOCATION INFORMATION FOR EXCAVATION
1-800-892-0123
OR 811

PROJECT ENGINEER: T. WAYNE HALSTEAD (618) 351-5228
PROJECT MANAGER: DAVID PICHE (618) 351-5227

CONTRACT NO. 78293

EXISTING STRUCTURE NO. 064-0035
FAI 24 OVER THE OHIO RIVER



LOCATION OF SECTION INDICATED THUS: - [black rectangle] -

STATE OF ILLINOIS
DEPARTMENT OF TRANSPORTATION
DIVISION OF HIGHWAYS

SUBMITTED January 30 20 13

[Signature]
DEPUTY DIRECTOR OF HIGHWAYS, REGION ENGINEER

March 22 20 13
John D. Baranzelli, P.E.
acting ENGINEER OF DESIGN AND ENVIRONMENT

March 22 20 13
Omer Osman, P.E.
DIRECTOR OF HIGHWAYS, CHIEF ENGINEER

PRINTED BY THE AUTHORITY
OF THE STATE OF ILLINOIS