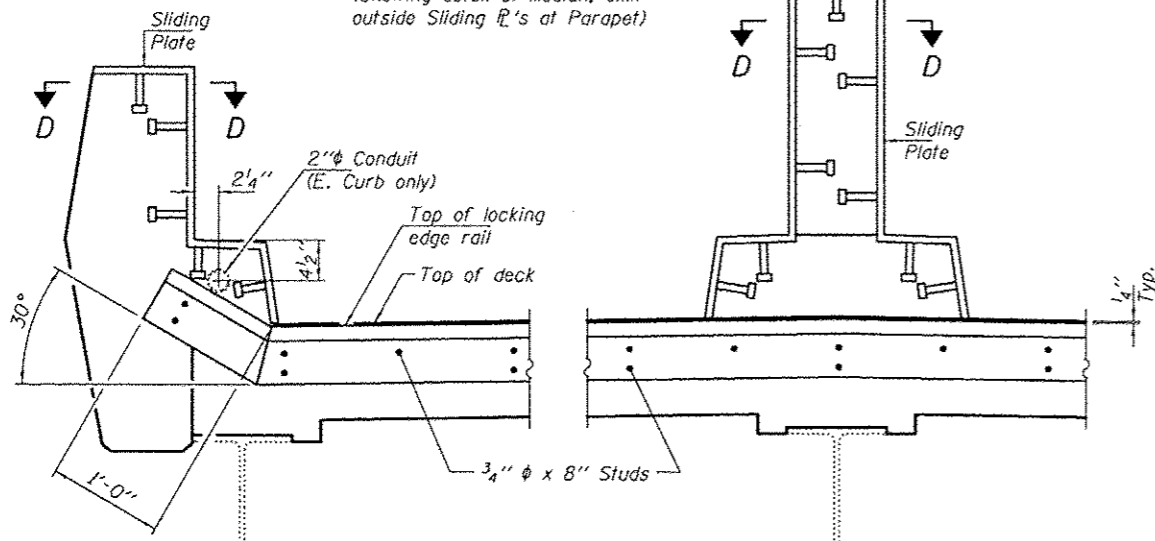


SLIDING PLATE TABLE OF DIMENSIONS

LOCATION	Dim. "A" at 50° F.	Dim. "B" at 50° F.	Dim. "C" (P Length)
Relief Joints	6"	2"	2'-4"
Cell A	8 1/8"	2 1/8"	2'-6"
Cell B	12 1/4"	4 1/4"	2'-8"

SECTION D-D

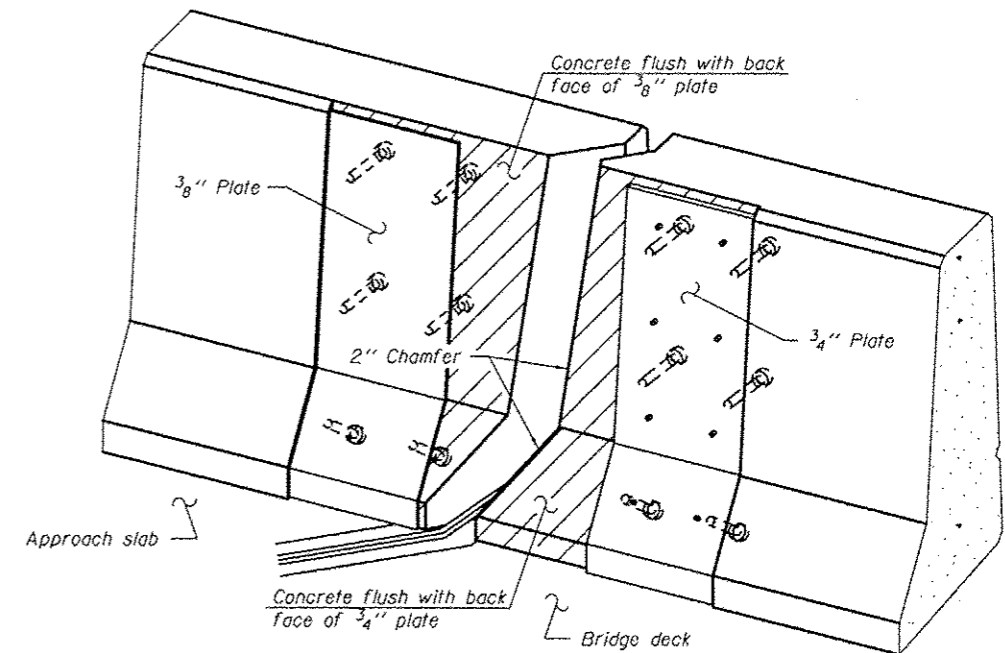
(See Table for Dimensions A, B & C)
(Showing detail at Median, omit outside Sliding P's at Parapet)



SHOWING SLIDING PLATES AT CELLS A & B ONLY

SHOWING SLIDING PLATES AT RELIEF JOINTS AND CELLS A & B

TYPICAL END TREATMENT AT PARAPET AND MEDIAN



TRIMETRIC VIEW (Showing back plates only)

Notes:
The strip seal shall be made continuous and shall have a minimum thickness of 1/4". The configuration of the strip seal shall match the configuration of the Locking Edge Rails. Open or "webbed" strip seal gland configurations are not permitted. The gland shall be sized for a maximum rated movement of 4 inches.

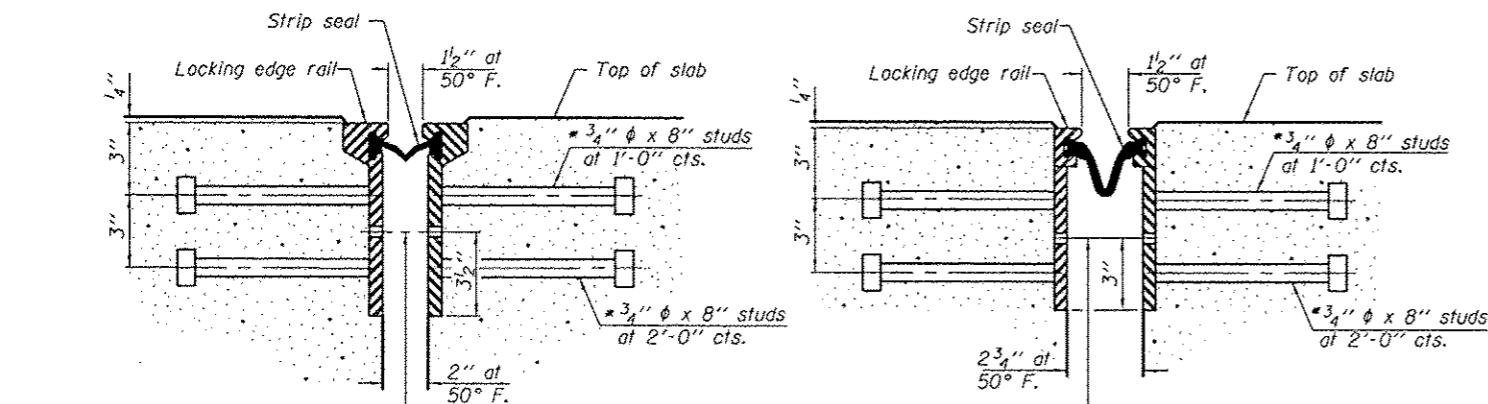
The Locking Edge Rails depicted are conceptual only, except for the minimum dimensions shown. The actual configuration of the Locking Edge Rails and matching strip seal may vary from manufacturer to manufacturer. Flanged edge rails will not be allowed. Locking Edge Rails may be spliced at slope discontinuities.

The manufacturer's recommended installation methods shall be followed.

The joint opening and deck dimensions detailed on the superstructure are based on a rolled rail expansion joint. If the Contractor elects to use the welded rail expansion joint, the opening and deck dimensions shall be modified according to the dimensions detailed on this sheet. Required modifications shall be made at no additional cost to the State.

All steel components shall be galvanized after fabrication according to Article 520.03 of the Standard Specifications. Maximum space between rail segments shall be 3/16", sealed with a suitable sealant. Joints in rails within 10 ft. of curbs shall be welded.

Parapet plates and anchorage studs included in the cost of Preformed Joint Strip Seal, Modular Expansion Joint 6" or Modular Expansion Joint 9" as applicable.



SECTION THRU ROLLED RAIL JOINT

SECTION THRU WELDED RAIL JOINT

7/16" φ holes at 4'-0" cts. for 3/8" φ bolts. All bolts shall be burned, sawed, or chipped off flush with the plates after forms are removed, typ.

7/16" φ holes at 4'-0" cts. for 3/8" φ bolts. All bolts shall be burned, sawed, or chipped off flush with the plates after forms are removed, typ.

* Granular or solid flux filled headed studs conforming to Article 1006.32 of the Std. Specs., automatically end welded.

ROLLED EXTRUDED RAIL

WELDED RAIL

LOCKING EDGE RAIL SPLICE

The inside of the locking edge rail groove shall be free of weld residue. Rolled rail shown, welded rail similar.

LOCKING EDGE RAILS

BILL OF MATERIAL

Item	Unit	Total
Preformed Joint Strip Seal	Foot	378
Modular Expansion Joint, 6"	Foot	66
Modular Expansion Joint, 9"	Foot	66

DESIGNED ATH
CHECKED SMR
DRAWN Kyle M. Steffen
CHECKED ATH SMR

EXAMINED Timothy A. [Signature]
PASSED [Signature]
ACTING ENGINEER OF STRUCTURAL SERVICES
ACTING ENGINEER OF BRIDGES AND STRUCTURES

DATE MARCH 14, 2013

STATE OF ILLINOIS
DEPARTMENT OF TRANSPORTATION

PREFORMED JOINT STRIP SEAL DETAILS
SN 064-0035

SHEET NO. 8 OF 15 SHEETS

F.A.I. RTE.	SECTION	COUNTY	TOTAL SHEETS	SHEET NO.
24	BSMART 2013-1	MASSAC	23	16

CONTRACT NO. 78293
ILLINOIS FED. AID PROJECT