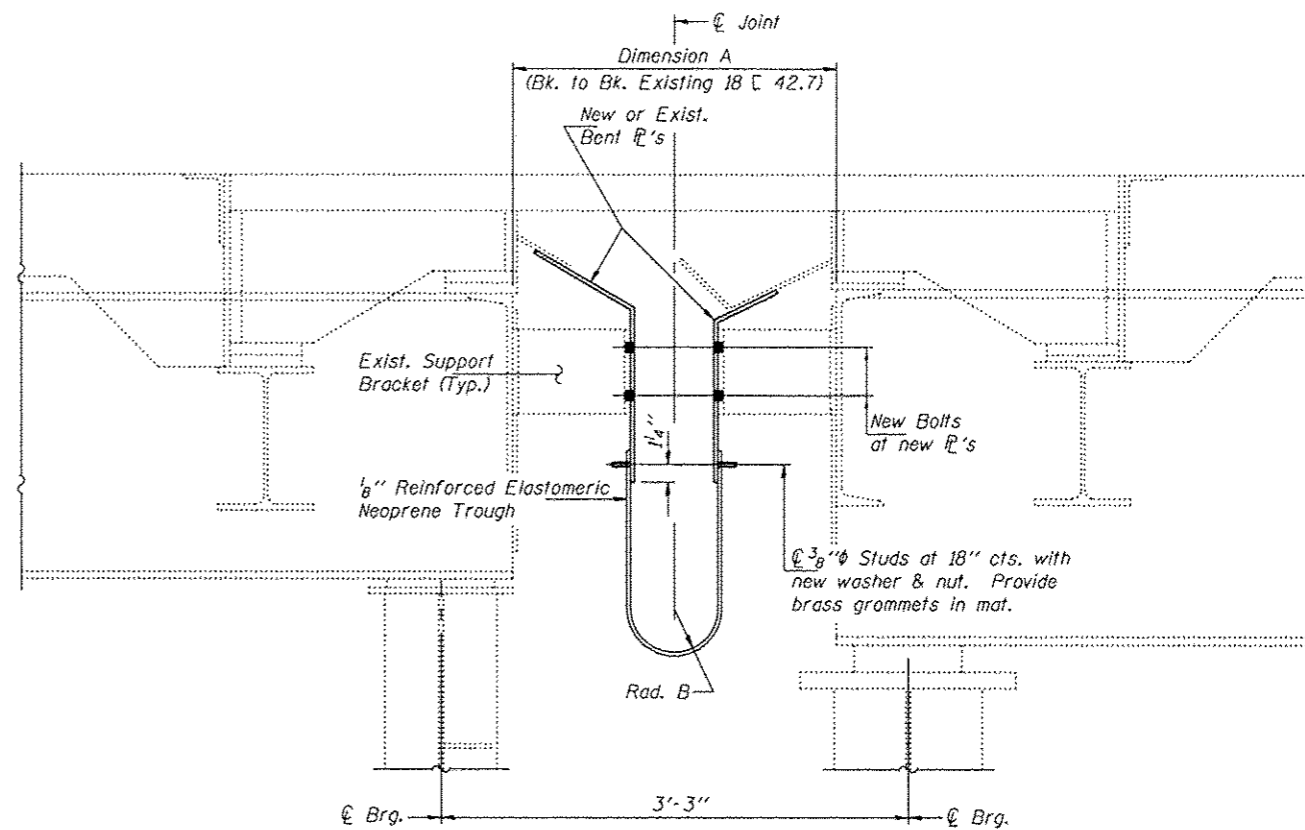


EXISTING SECTION THRU JOINT

* Cost included with Structural Steel Removal.

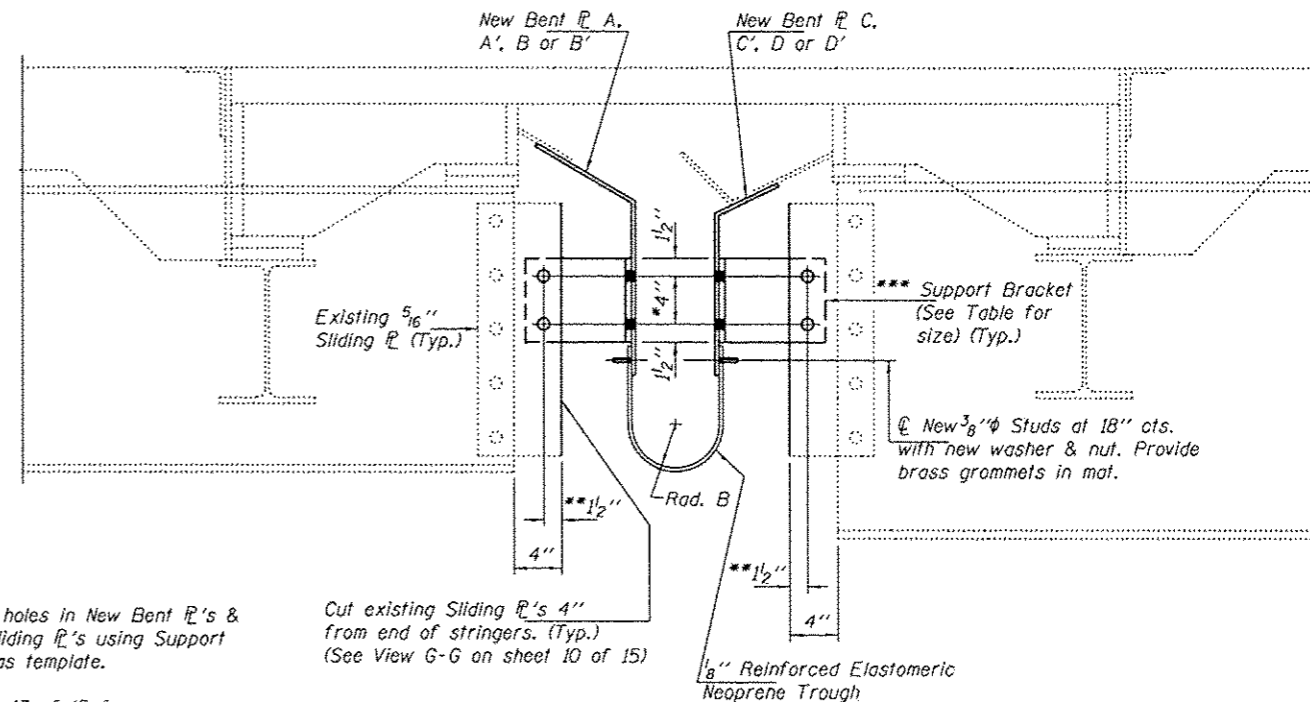


PROPOSED SECTION THRU JOINT

(Except at Fascia Beams)

TABLE OF DIMENSION

LOCATION	DIMENSION AT TEMPERATURE (F.)										***Support Bracket Cut From
	20°		40°		60°		80°		100°		
	Dim. A	Rad. B	Dim. A	Rad. B	Dim. A	Rad. B	Dim. A	Rad. B	Dim. A	Rad. B	
Pier #3	2'-7 ¹ / ₈ "	5 ¹ / ₁₆ "	2'-5 ¹¹ / ₁₆ "	4 ⁷ / ₈ "	2'-4 ¹ / ₄ "	3 ⁵ / ₈ "	2'-2 ¹³ / ₁₆ "	2 ¹⁵ / ₁₆ "	2'-1 ⁵ / ₁₆ "	2 ³ / ₁₆ "	W10x30
Pier #4	1'-7 ¹ / ₈ "	4 ⁹ / ₁₆ "	1'-6 ⁷ / ₁₆ "	4 ¹ / ₄ "	1'-5 ³ / ₄ "	3 ⁷ / ₈ "	1'-5 ¹ / ₁₆ "	3 ⁹ / ₁₆ "	1'-4 ⁵ / ₁₆ "	3 ³ / ₁₆ "	W5x16
Pier #8	3'-2 ³ / ₄ "	8 ⁷ / ₈ "	3'-0 ³ / ₈ "	7 ¹ / ₁₆ "	2'-10"	6 ¹ / ₂ "	2'-7 ⁵ / ₈ "	5 ⁵ / ₁₆ "	2'-5 ⁵ / ₁₆ "	4 ¹ / ₈ "	W10x30
Pier #12	3'-0 ¹¹ / ₁₆ "	7 ⁷ / ₈ "	2'-10 ⁷ / ₈ "	6 ¹⁵ / ₁₆ "	2'-9"	6"	2'-7 ⁷ / ₈ "	5 ¹ / ₁₆ "	2'-5 ⁵ / ₁₆ "	4 ¹ / ₈ "	W10x30
Pier #13	1'-9 ⁵ / ₈ "	5 ¹³ / ₁₆ "	1'-8 ¹¹ / ₁₆ "	5 ³ / ₈ "	1'-7 ³ / ₄ "	4 ⁷ / ₈ "	1'-6 ¹³ / ₁₆ "	4 ⁷ / ₁₆ "	1'-5 ⁷ / ₈ "	3 ¹⁵ / ₁₆ "	W5x16



PROPOSED SECTION THRU JOINT AT FASCIA BEAMS

(3/4" Bolts in 13/16" Holes except as noted on Sheet 12 of 15)

** Field drill holes in New Bent R's & existing Sliding R's using Support Brackets as template.

*** See sheet 13 of 15 for W Shape cutting details.

Cut existing Sliding R's 4" from end of stringers. (Typ.) (See View G-G on sheet 10 of 15)

DESIGNED ATH
CHECKED SMR
DRAWN Kyle M. Steffen
CHECKED ATH SMR

EXAMINED
PASSED
Timothy A. [Signature]
ACTING ENGINEER OF STRUCTURAL SERVICES
[Signature]
ACTING ENGINEER OF BRIDGES AND STRUCTURES

DATE MARCH 14, 2013

STATE OF ILLINOIS
DEPARTMENT OF TRANSPORTATION

TROUGH DETAILS
SN 064-0035

SHEET NO. 11 OF 15 SHEETS

F.A.I. RTE.	SECTION	COUNTY	TOTAL SHEETS	SHEET NO.
24	BSMART 2013-1	MASSAC	23	19
CONTRACT NO. 78293			ILLINOIS FED. AID PROJECT	