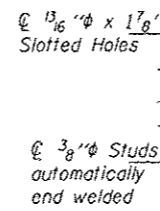
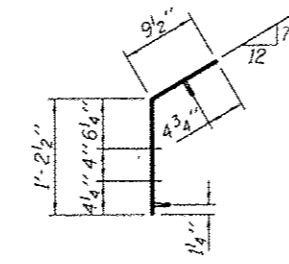
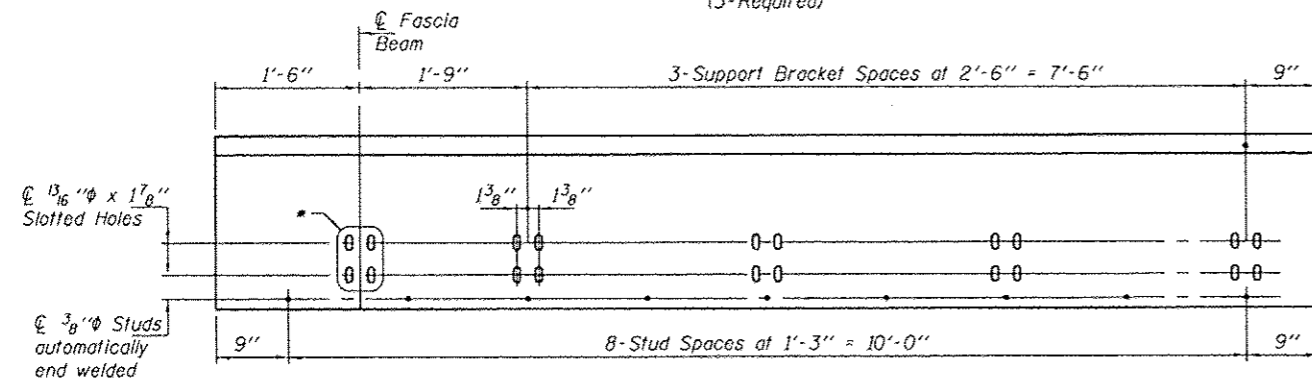


BENT PLATE A
 $\text{PL } 5/16'' \times 2'-0'' \times 11'-6''$
 (At Piers 3, 8 & 12)
 (3-Required)

SECTION THRU BENT PLATE A & A'

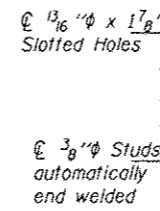
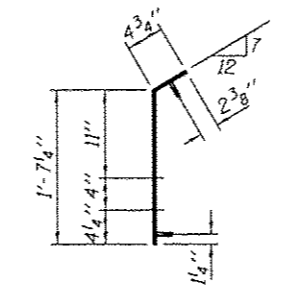


BENT PLATE A'
 $\text{PL } 5/16'' \times 2'-0'' \times 11'-6''$
 (At Piers 3, 8 & 12)
 (3-Required)

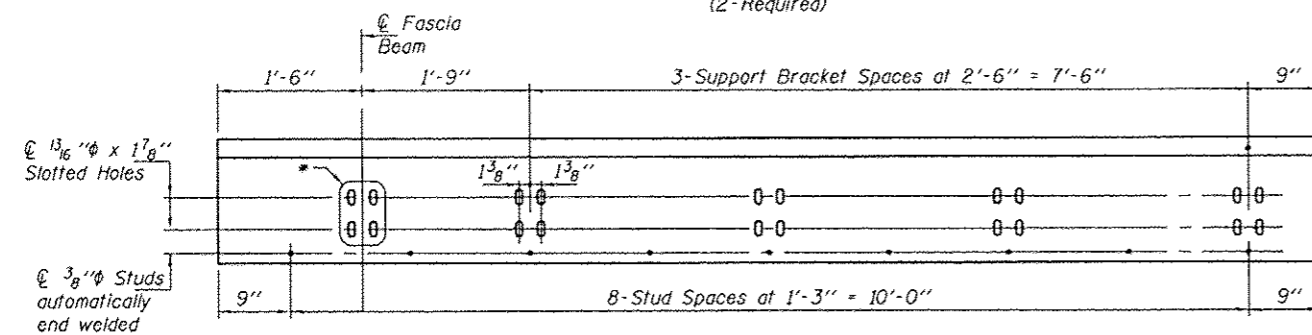


BENT PLATE B
 $\text{PL } 5/16'' \times 2'-0'' \times 11'-6''$
 (At Piers 4 & 13)
 (2-Required)

SECTION THRU BENT PLATE B & B'

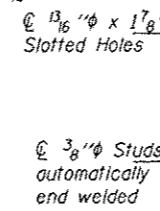
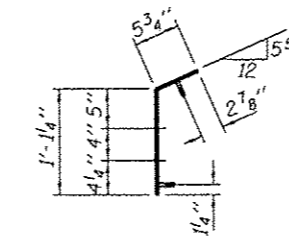


BENT PLATE B'
 $\text{PL } 5/16'' \times 2'-0'' \times 11'-6''$
 (At Piers 4 & 13)
 (2-Required)

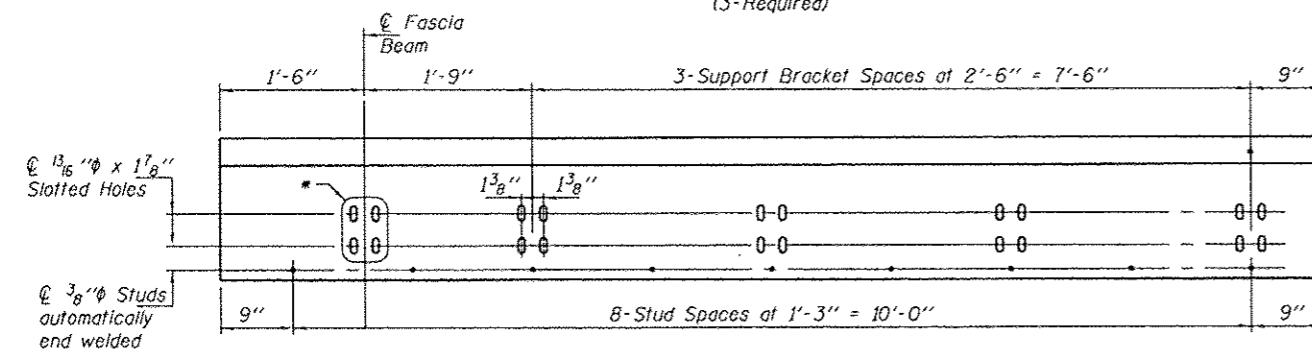


BENT PLATE C
 $\text{PL } 5/16'' \times 1'-7'' \times 11'-6''$
 (At Piers 3, 8 & 12)
 (3-Required)

SECTION THRU BENT PLATE C & C'

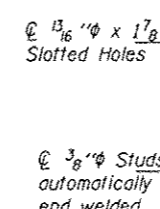
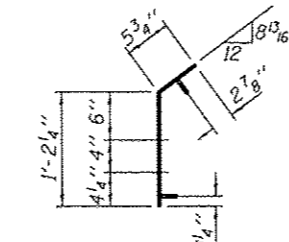


BENT PLATE C'
 $\text{PL } 5/16'' \times 1'-7'' \times 11'-6''$
 (At Piers 3, 8 & 12)
 (3-Required)



BENT PLATE D
 $\text{PL } 5/16'' \times 1'-8'' \times 11'-6''$
 (At Piers 4 & 13)
 (2-Required)

SECTION THRU BENT PLATE D & D'



BENT PLATE D'
 $\text{PL } 5/16'' \times 1'-8'' \times 11'-6''$
 (At Piers 4 & 13)
 (2-Required)

* Field drill holes using new brackets as template.

DESIGNED ATH
 CHECKED SMR
 DRAWN Kyle M. Steffen
 CHECKED ATH SMR

EXAMINED
 PASSED
 ACTING ENGINEER OF BRIDGES AND STRUCTURES

DATE - MARCH 14, 2013

STATE OF ILLINOIS
 DEPARTMENT OF TRANSPORTATION

BENT PLATE DETAILS
 SN 064-0035

SHEET NO. 12 OF 15 SHEETS

F.A.I. RTE.	SECTION	COUNTY	TOTAL SHEETS	SHEET NO.
24	BSMART 2013-1	MASSAC	23	20
CONTRACT NO. 78293			ILLINOIS FED. AID PROJECT	