

04-26-13 LETTING ITEM 090

STATE OF ILLINOIS
DEPARTMENT OF TRANSPORTATION
DIVISION OF HIGHWAYS

**PROPOSED
HIGHWAY PLANS**

FAP ROUTE 42 (IL 127)
SECTION 8(N-1)
PROJECT NHPP-0042(106)
INTERSECTION IMPROVEMENT
PERRY COUNTY

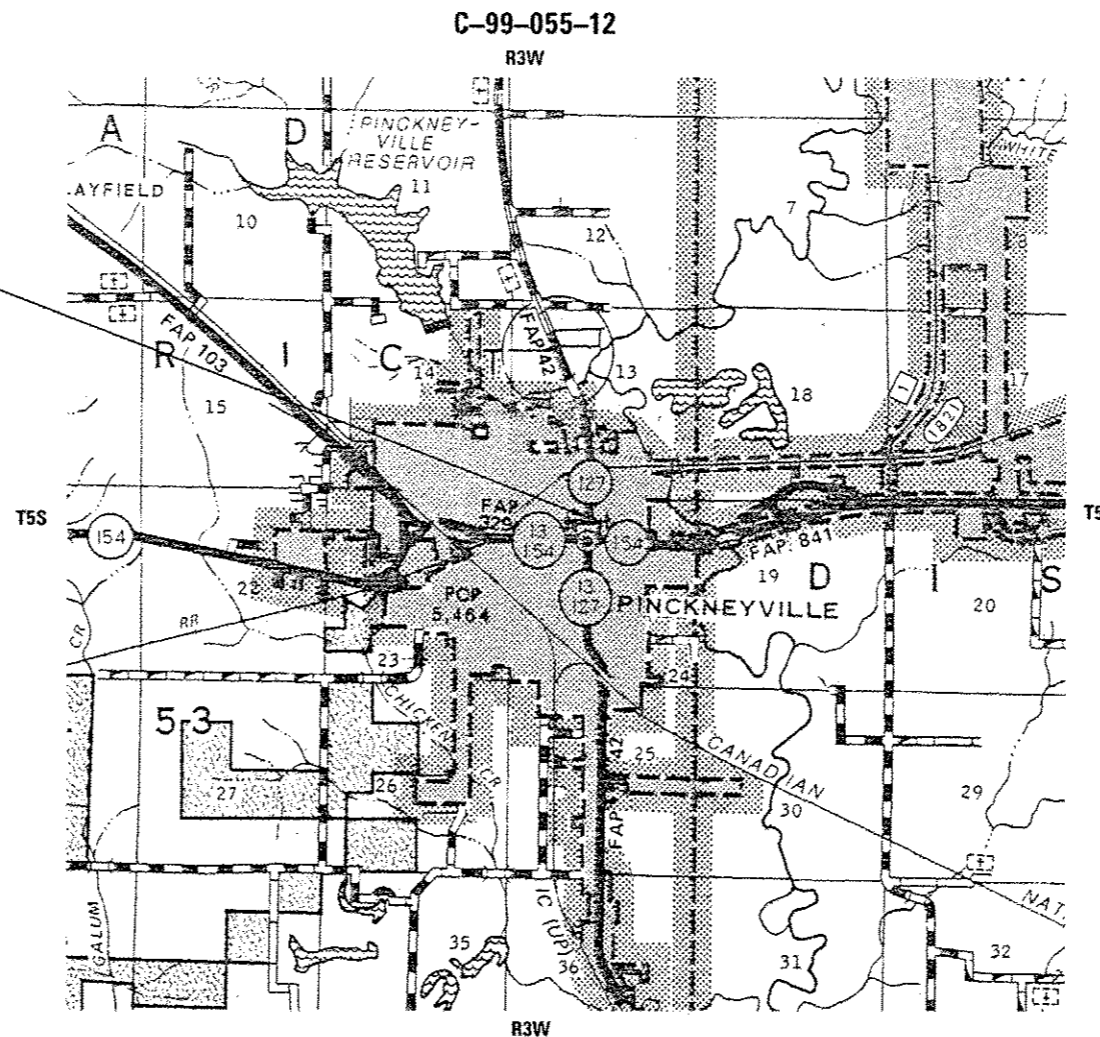
F.A.P. RTE.	SECTION	COUNTY	TOTAL SHEETS	SHEET NO.
42	8(N-1)	PERRY	26	1
		ILLINOIS	CONTRACT NO. 78324	

FOR INDEX OF SHEETS, SEE SHEET NO. 2
FOR SUMMARY OF QUANTITIES, SEE SHEET NO. 3

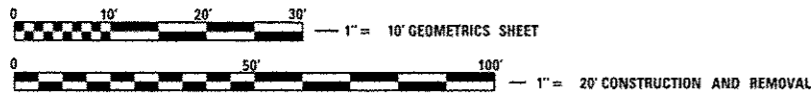
APPROACH	ADT(2011)	%TRUCKS
IL 127	4,800	10.0%



PROJECT LOCATION
IL 127 - NORTH LEG OF
PINCKNEYVILLE SQUARE



GROSS LENGTH = 115 FT. = 0.02 MILE
NET LENGTH = 115 FT. = 0.02 MILE



FULL SIZE PLANS HAVE BEEN PREPARED USING STANDARD
ENGINEERING SCALES. REDUCED SIZED PLANS WILL NOT
CONFORM TO STANDARD SCALES. IN MAKING MEASUREMENTS
ON REDUCED PLANS, THE ABOVE SCALES MAY BE USED.

J.U.L.I.E.
JOINT UTILITY LOCATION INFORMATION FOR EXCAVATION
1-800-892-0123
OR 811

PROJECT ENGINEER SUSAN POE
PROJECT MANAGER CHRIS RUSSELL

CONTRACT NO. 78324

STATE OF ILLINOIS
DEPARTMENT OF TRANSPORTATION
DIVISION OF HIGHWAYS

SUBMITTED *January 30, 2013*

[Signature]
DEPUTY DIRECTOR OF HIGHWAYS, REGION ENGINEER

March 22, 2013
John D. Baranzoli, P.E., Inc.
ENGINEER OF DESIGN AND ENVIRONMENT

March 22, 2013
Omer Osman, P.E., Inc.
DIRECTOR OF HIGHWAYS, CHIEF ENGINEER

**PRINTED BY THE AUTHORITY
OF THE STATE OF ILLINOIS**

GENERAL NOTES

1. FACTORS USED FOR ESTIMATING PLAN QUANTITIES ARE AS FOLLOWS AND SHALL NOT BE USED FOR THE BASIS OF FINAL QUANTITIES:

ALL HOT MIX ASPHALT	2.016 TONS/CU YD
ALL AGGREGATE	2.05 TONS/CU YD
BITUMINOUS MATERIALS:	
ON PAVEMENT	0.09 GAL/SO YD
INTERMEDIATE LIFTS (FOG COATS)	0.04 GAL/SO YD
ON AGGREGATE SURFACE	0.32 GAL/SO YD
AGGREGATE (PRIME COAT)	0.0015 TONS/SO YD

2. PROTECTIVE COAT SHALL BE APPLIED TO CONCRETE CURB AND GUTTER 420.18 OF THE STANDARD SPECIFICATIONS.

3. AT ALL LOCATIONS WHERE THE PROPOSED BITUMINOUS OR CONCRETE PAVEMENT JOINS AN EXISTING BITUMINOUS OR CONCRETE PAVEMENT, A FULL DEPTH SAWED JOINT SHALL BE CONSTRUCTED. THE COST OF THIS JOINT WILL BE INCLUDED IN THE COST OF THE TYPE OF PAVEMENT BEING CONSTRUCTED.

4. PRIOR TO PLACEMENT OF THE FINAL PAVEMENT MARKINGS THE RESIDENT ENGINEER SHOULD CONTACT THE BUREAU OF OPERATIONS AND ARRANGE FOR INSPECTION AND APPROVAL OF THE PAVEMENT MARKING LAYOUT.

5. FORMS FOR COMBINATION CONCRETE CURB AND GUTTER SHALL BE METAL ONLY. EXCEPT THAT WOOD FORMS MAY BE USED ON SHORT RADIUS CURVES.

6. SIDEWALK REMOVAL ADJACENT TO EXISTING BUILDINGS SHALL BE DONE BY HAND. SPECIAL CARE SHALL BE TAKEN NOT TO DISTURB EXISTING BRICK OR EXISTING CURB. THE CONTRACTOR WILL BE RESPONSIBLE FOR DAMAGES TO THE EXISTING BRICK OR CURB.

7. COMMITMENTS: NO LANE CLOSURE DURING THRESHERMANS FESTIVAL FROM AUGUST 14TH TO AUGUST 18TH

INDEX OF SHEETS

SHT NO	DESCRIPTION
1	COVER SHEET
2	INDEX OF SHEETS, STANDARDS, GENERAL NOTES
3-4	SUMMARY OF QUANTITIES
5-6	TYPICAL SECTIONS
7-8	SCHEDULES OF QUANTITIES
9	TIE POINTS/PAVEMENT MARKINGS
10	GEOPAK ELEMENTS IDENTIFICATION SHEET
11	PROPOSED REMOVAL AND CONSTRUCTION SHEET
12	RIGHT OF WAY SHEET
13	GEOMETRICS SHEET
14	SIDEWALK ELEVATIONS
15	TRUCK ROUTE DETOUR
16	CURB DETAIL SHEETS
17	SIGN DETAIL SHEETS
18-26	CROSS-SECTIONS

STANDARDS

000001-06	STANDARD SYMBOLS, ABBREVIATIONS, AND PATTERNS
001001-02	AREAS OF REINFORCEMENT BARS
001006	DECIMAL OF AN INCH AND OF A FOOT
353001-04	PCC BASE COURSE WITH HMA BINDER AND SURFACE COURSES
424001-07	PERPENDICULAR CURB RAMPS FOR SIDEWALKS
424011-01	CORNER PARALLEL CURB RAMPS FOR SIDEWALKS
606001-05	CONCRETE CURB TYPE B AND COMBINATION CONCRETE CURB AND GUTTER
701701-08	URBAN LANE CLOSURE, MULTILANE INTERSECTION
701801-05	LANE CLOSURE MULTILANE 1W OR 2W CROSSWALK OR SIDEWALK CLOSURE

701901-02

Location(s):	Hot-Mix Asphalt Surface Course
Mixture Use(s):	Polymerized Hot-Mix Asphalt Surface Course, Mix D, N105
AC/PG:	SBS PG76-22
RAP % (Max):	SEE SPECIAL PROVISIONS
Design Air Voids:	4.0 %, 105 Gyration Design
Mixture Composition: (Gradation Mixture)	IL-9.5 mm or IL12.5 mm
Friction Aggregate:	D Surface

Location(s):	Hot-Mix Asphalt Binder Course
Mixture Use(s):	Polymerized Hot-Mix Asphalt Leveling Binder, N90, IL-9.5 Fine-Graded
AC/PG:	SBS PG76-22
RAP % (Max):	SEE SPECIAL PROVISIONS
Design Air Voids:	4.0 %, 90 Gyration Design
Mixture Composition: (Gradation Mixture)	IL-9.5 FG
Friction Aggregate:	None

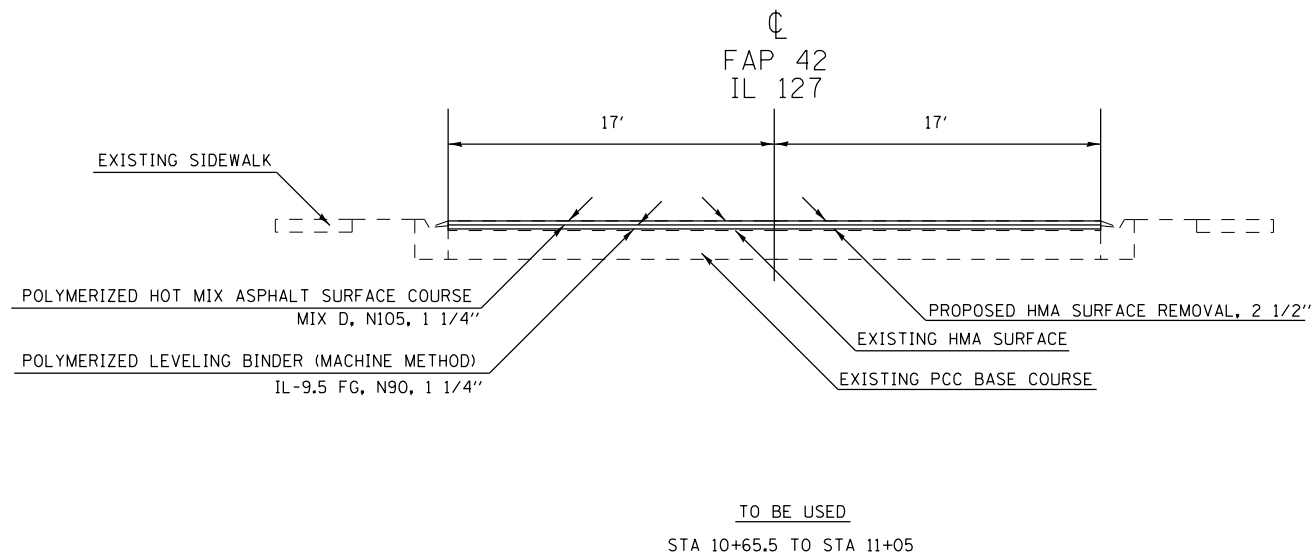
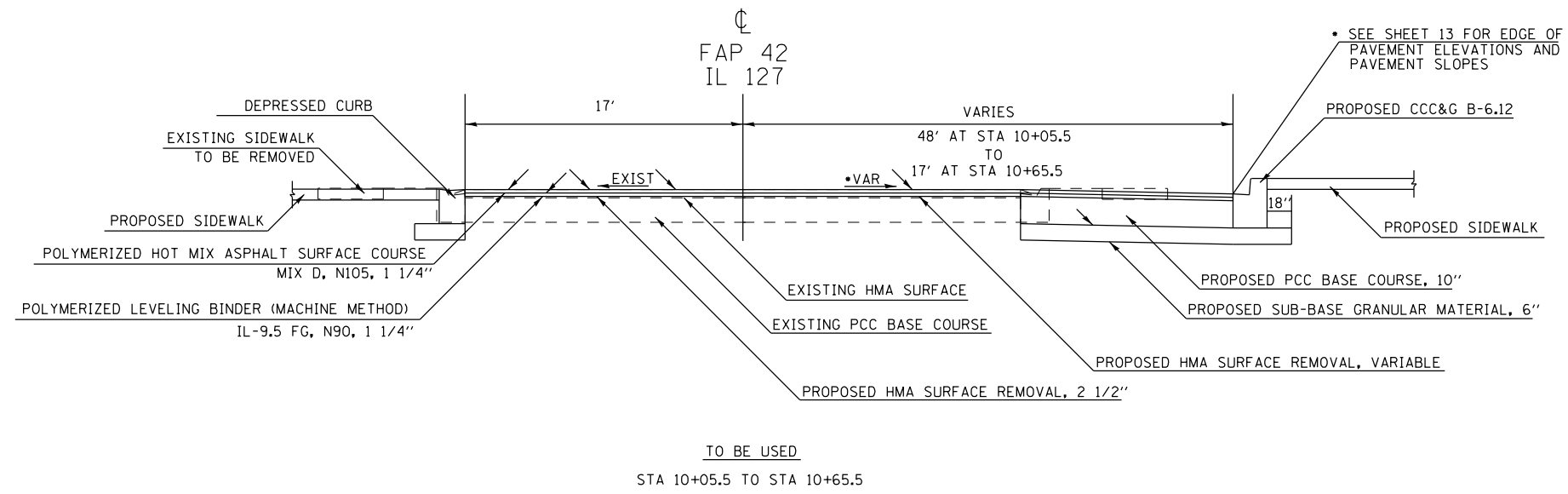
Prepared By:	<i>Joe Pfenninger</i> DISTRICT STUDIES & PLANS ENGINEER
Examined By:	<i>James E. ...</i> DISTRICT LAND ACQUISITION ENGINEER
Examined By:	<i>Carrie Nelson</i> DISTRICT PROGRAM DEVELOPMENT ENGINEER
Examined By:	<i>Kevin Kelly</i> DISTRICT OPERATIONS ENGINEER
Examined By:	<i>[Signature]</i> DISTRICT PROJECT IMPLEMENTATION ENGINEER
Examined By:	<i>Doris J. ...</i> DISTRICT CONSTRUCTION ENGINEER
Examined By:	<i>Bruce ...</i> DISTRICT MATERIALS ENGINEER
Approved By:	<i>Jeffrey ...</i> DEPUTY DIRECTOR OF HIGHWAYS, REGION 5 ENGINEER
DATE	1-30-2013

CODE NUMBER	PAY ITEM	CONSTRUCTION TYPE CODE		0004
		UNIT	URBAN TOTAL QUANTITY	ROADWAY 80% FED. 20% STATE
X4401198	HOT-MIX ASPHALT SURFACE REMOVAL, VARIABLE DEPTH	SOYD	105	105
20200100	EARTH EXCAVATION	CUYD	16	16
28000250	TEMPORARY EROSION CONTROL SEEDING	POUND	2	2
31100500	SUB-BASE GRANULAR MATERIAL, TYPE A, 6"	SOYD	50	50
35300500	PORTLAND CEMENT CONCRETE BASE COURSE, 10"	SOYD	27	27
40600115	POLYMERIZED BITUMINOUS MATERIALS (PRIME COAT)	GAL	159	159
40600300	AGGREGATE (PRIME COAT)	TON	2.5	2.5
40600909	POLYMERIZED LEVELING BINDER (MACHINE METHOD, IL-9.5 FG, N90)	TON	41	41
40600990	TEMPORARY RAMP	SOYD	72	72
40603550	POLYMERIZED HOT-MIX ASPHALT SURFACE COURSE, MIX D, N105	TON	41	41
42000411	PROTECTIVE COAT	SOYD	13	13
42400100	PORTLAND CEMENT CONCRETE SIDEWALK, 4"	SOFT	846	846
42400300	PORTLAND CEMENT CONCRETE SIDEWALK, 6"	SOFT	75	75
44000100	PAVEMENT REMOVAL	SOYD	5	5

CODE NUMBER	PAY ITEM	CONSTRUCTION TYPE CODE		0004
		UNIT	URBAN TOTAL QUANTITY	ROADWAY 80% FED. 20% STATE
44000159	HOT-MIX ASPHALT SURFACE REMOVAL, 2 1/2"	SOYD	450	450
44000500	COMBINATION CONCRETE CURB AND GUTTER REMOVAL	FOOT	106	106
44000600	SIDEWALK REMOVAL	SOFT	1111	1111
50300225	CONCRETE STRUCTURES	CUYD	0.28	0.28
50800205	REINFORCEMENT BARS, EPOXY COATED	POUND	13	13
60603800	COMBINATION CONCRETE CURB AND GUTTER, B-6.12	FOOT	96	96
67000400	ENGINEER'S FIELD OFFICE, TYPE A	CAL MO	2	2
67100100	MOBILIZATION	LSUM	1	1
70102635	TRAFFIC CONTROL AND PROTECTION, STANDARD 701701	LSUM	1	1
70106800	CHANGEABLE MESSAGE SIGN	CAL MO	12	12
* 70300100	SHORT TERM PAVEMENT MARKINGS	FOOT	12	12
* 70300220	TEMPORARY PAVEMENT MARKING - LINE 4"	FOOT	70	70
* 70300260	TEMPORARY PAVEMENT MARKINGS - LINE 24"	FOOT	17	17
70301000	WORK ZONE PAVEMENT MARKING REMOVAL	SOFT	62	62

*SPECIALTY ITEM

FILE NAME	USER NAME	DESIGNED	REVISED	STATE OF ILLINOIS DEPARTMENT OF TRANSPORTATION	SUMMARY OF QUANTITIES	F.A.P. RTE.	SECTION	COUNTY	TOTAL SHEETS	SHEET NO.	
ct:\p\work\p\dot\puffer\aa\d0310037\783	*-shita.cvr.sng.indax.dgn	DRAWN	REVISED			42	BIN-11	PERRY	26	3	
	PLOT SCALE = 100.0000 / 1"	CHECKED	REVISED			SCALE: SHEET OF SHEETS STA. TO STA.					
MODEL NAME	PLOT DATE = 1/31/2013	DATE	REVISED			ILLINOIS FED. AID PROJECT CONTRACT NO. 78324					



FILE NAME =	USER NAME = \$USER\$	DESIGNED -	REVISED -	STATE OF ILLINOIS DEPARTMENT OF TRANSPORTATION	TYPICAL SECTIONS IL 127			F.A.P. RTE.	SECTION	COUNTY	TOTAL SHEETS	SHEET NO.				
ct:\pw\work\p\idot\puff\era\id0310037\78324-sh\tp-typ_sch_ties.dgn		DRAWN -	REVISED -		SCALE:	SHEET	OF	SHEETS	STA.	TO	STA.	42	8(N-1)	PERRY	26	5
\$MODELNAME\$		CHECKED -	REVISED -		CONTRACT NO. 78324											
		DATE -	REVISED -		ILLINOIS FED. AID PROJECT											

PAVEMENT AND REMOVAL SCHEDULE

LOCATION STATION TO STATION	PORTLAND CEMENT CONCRETE BASE COURSE, 10"	POLYMERIZED HOT-MIX ASPHALT SURFACE COURSE, MIX D, N105	POLYMERIZED LEVELING BINDER (MACHINE METHOD) IL-9.5 FG, N90	SUB-BASE GRANULAR MATERIAL TYPE A, 6"	COMB. CONCRETE CURB AND GUTTER B-6.12	PAVEMENT REMOVAL	COMB. CURB AND GUTTER REMOVAL	HMA SURFACE REMOVAL, 2 1/2"	HMA SURFACE REMOVAL, VARIABLE DEPTH
	SQ YD	TON	TON	SQ YD	FOOT	SQ YD	FOOT	SQ YD	SQ YD
ILLINOIS 127									
STA 9+92 TO STA 11+05								450	
STA 9+92 TO STA 11+05		41	41						
STA 10+05.5 TO STA 10+60.5									105
STA 10+05.5 TO STA 10+15.5						5			
STA 10+05.5RT TO STA 10+65.5RT					75		85		
STA 10+06.5 TO STA 10+50.5	27			50					
STA 10+08 LT TO STA 10+21.5 LT					21		21		
TOTALS	27	41	41	50	96	5	106	450	105

EARTHWORK SCHEDULE

LOCATION STATION TO STATION	EARTH EXCAVATION	EXCAVATION TO BE USED IN EMBANKMENT ADJUSTED FOR SHRINKAGE	EMBANKMENT	EARTHWORK BALANCE WASTE (+) OR SHORTAGE (-)
	CU YD	CU YD	CU YD	CU YD
ILLINOIS 127				
STA 10+05.5 TO STA 10+50.5	16	12	0	12
TOTALS	16	12	0	12

25% Shrinkage Factor for Earth Excavation




PAVEMENT MARKING SCHEDULE

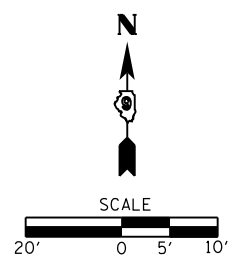
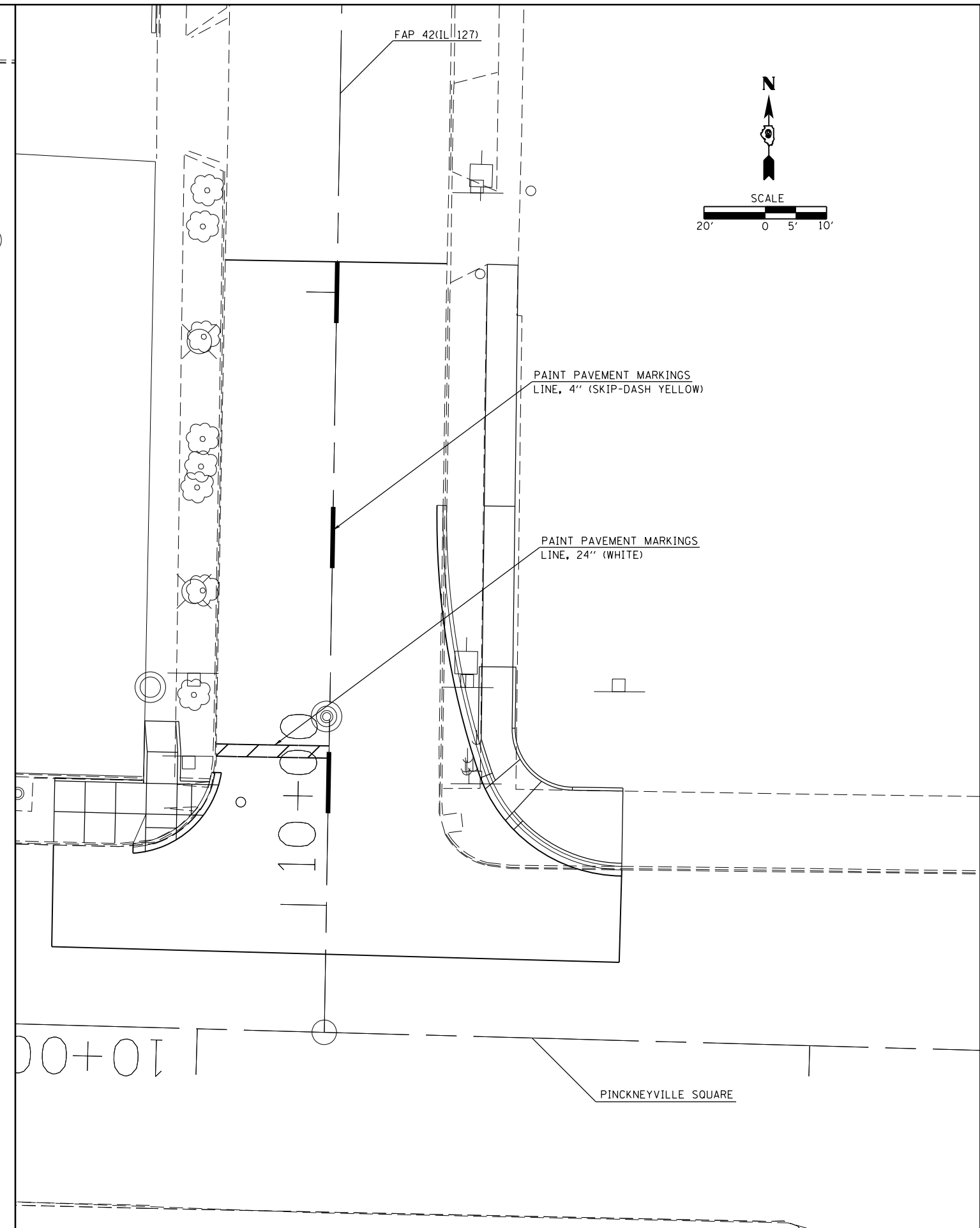
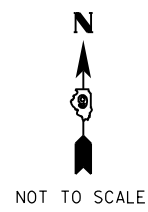
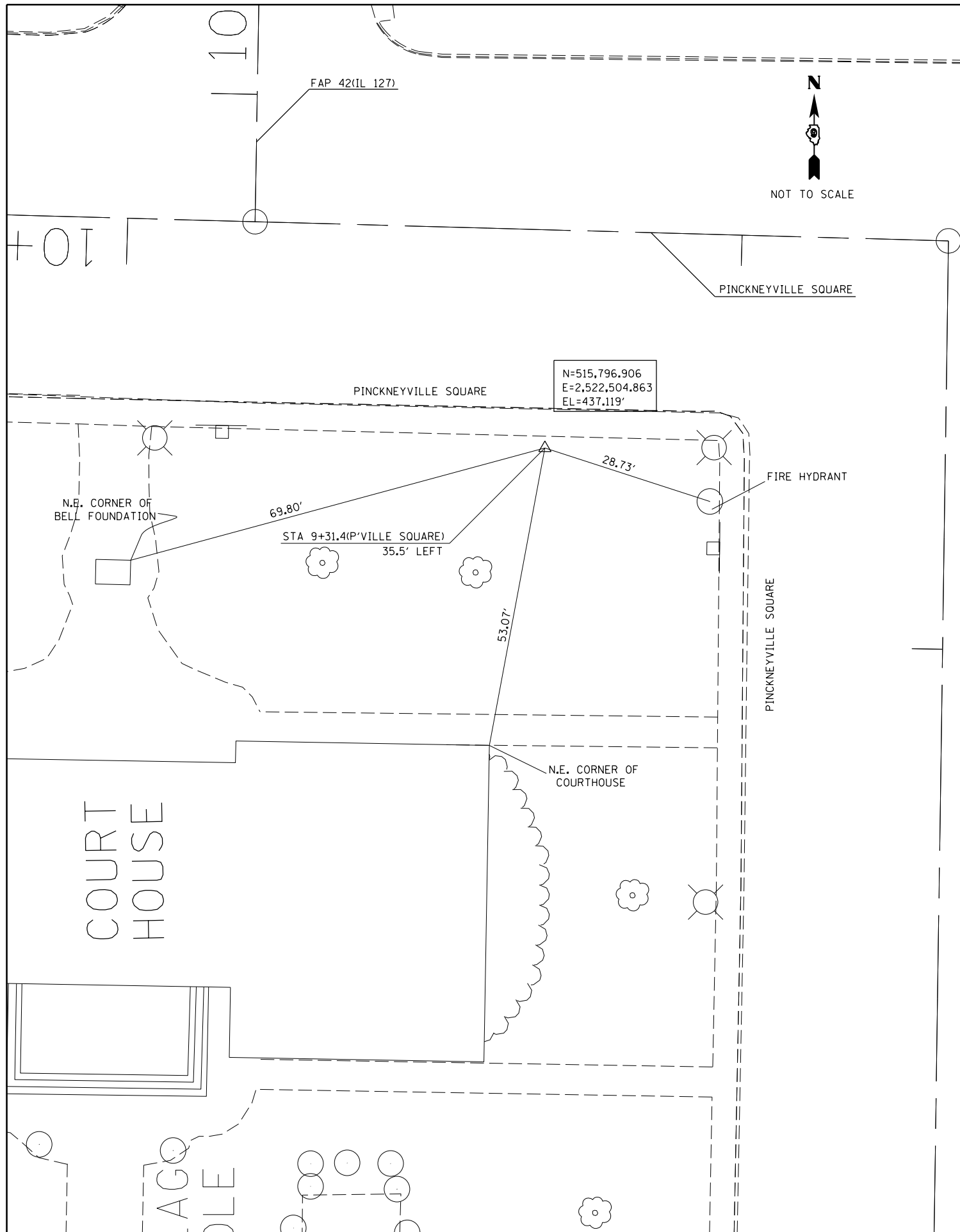
LOCATION STATION TO STATION	PAINT PAVEMENT MARKING		
	4 INCH		24 INCH
	WHITE	YELLOW	WHITE
	FOOT	FOOT	FOOT
IL 127			
STA 9+91 TO STA 11+05 (SKIP DASH)		30	
STA 9+95 TO STA 10+06 (PARKING LINES)	40		
STA 10+25 (STOP BAR)			17
SUBTOTAL	40	30	17

SIDEWALK SCHEDULE

LOCATION STATION TO STATION	PORTLAND CEMENT CONCRETE SIDEWALK, 4"	PORTLAND CEMENT CONCRETE SIDEWALK, 6"	SIDEWALK REMOVAL
	SQ FT	SQ FT	SQ FT
ILLINOIS 127			
STA 10+07.5 RT TO STA 11+05 RT	646		837
STA 10+14 LT TO STA 10+19 LT		75	
STA 10+08 LT TO STA 10+30 LT	200		274
TOTALS	846	75	1,111

DETOUR ROUTE SIGN SCHEDULE

SIGN ID NO.	DESCRIPTION	NUMBER REQUIRED EACH	SIGN SIZE	SIGN PANEL TYPE 1 SQ FT	SIGN PANEL TYPE 2 SQ FT
M4-9R	DETOUR	13	24" x 12"	26	
M1-I100	127	13	24" x 24"	52	
M6-1		5	21" x 15"	10.9	
M6-1L		5	21" x 15"	10.9	
M6-3		3	21" x 15"	6.6	
W20-2	DETOUR AHEAD	6	48" x 48"		96
	TRUCKS ONLY	19	24" x 24"	76	
TOTALS				182.4	96



FILE NAME =	USER NAME = \$USER\$	DESIGNED -	REVISED -
c:\pwork\work\pwork\puff\puff\0310037\78324-shb-tyo_sch_ties.dgn		DRAWN -	REVISED -
\$MODELNAME\$	PLOT SCALE = 20.0000' / in.	CHECKED -	REVISED -
	PLOT DATE = 2/5/2013	DATE -	REVISED -

**STATE OF ILLINOIS
DEPARTMENT OF TRANSPORTATION**

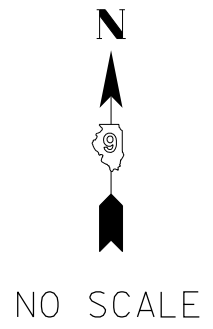
**PAVEMENT MARKINGS
TIE POINTS**

SCALE:	SHEET	OF	SHEETS	STA.	TO	STA.
--------	-------	----	--------	------	----	------

F.A.P. RTE.	SECTION	COUNTY	TOTAL SHEETS	SHEET NO.
42	8(N-1)	PERRY	26	9
CONTRACT NO. 78324				
ILLINOIS FED. AID PROJECT				

CHAIN - IL 127

CHAIN - RADIUS



10+00

00+00

CHAIN - SQUARE

FILE NAME =	USER NAME = \$USER\$	DESIGNED -	REVISED -
c:\pwork\work\pwork\pufferead\0310037\78324-shrb-tyr_sch_ties.dgn		DRAWN -	REVISED -
\$MODELNAME\$	PLOT SCALE = 20.0000' / in.	CHECKED -	REVISED -
	PLOT DATE = 2/5/2013	DATE -	REVISED -

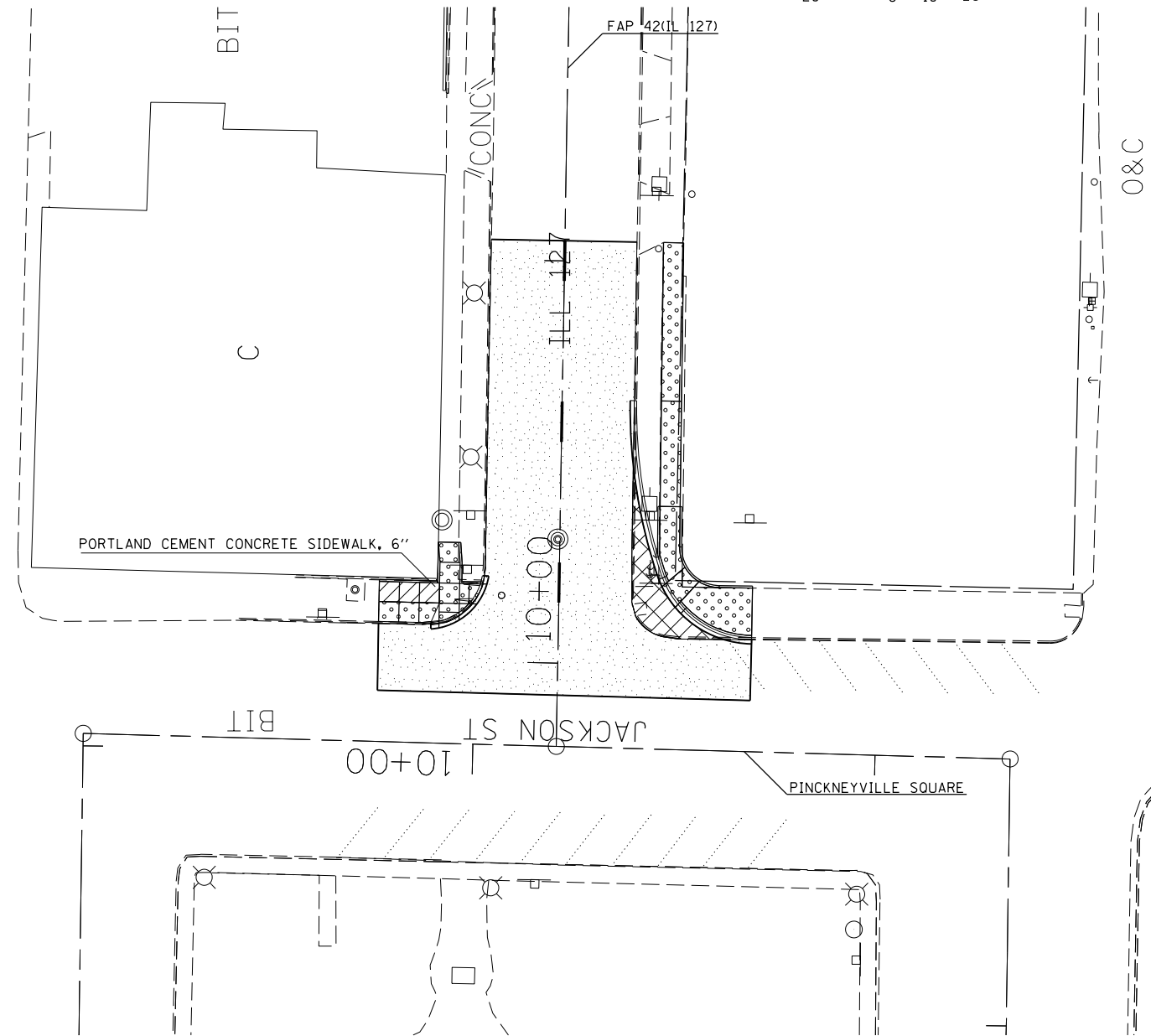
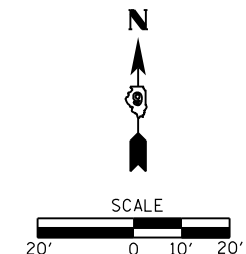
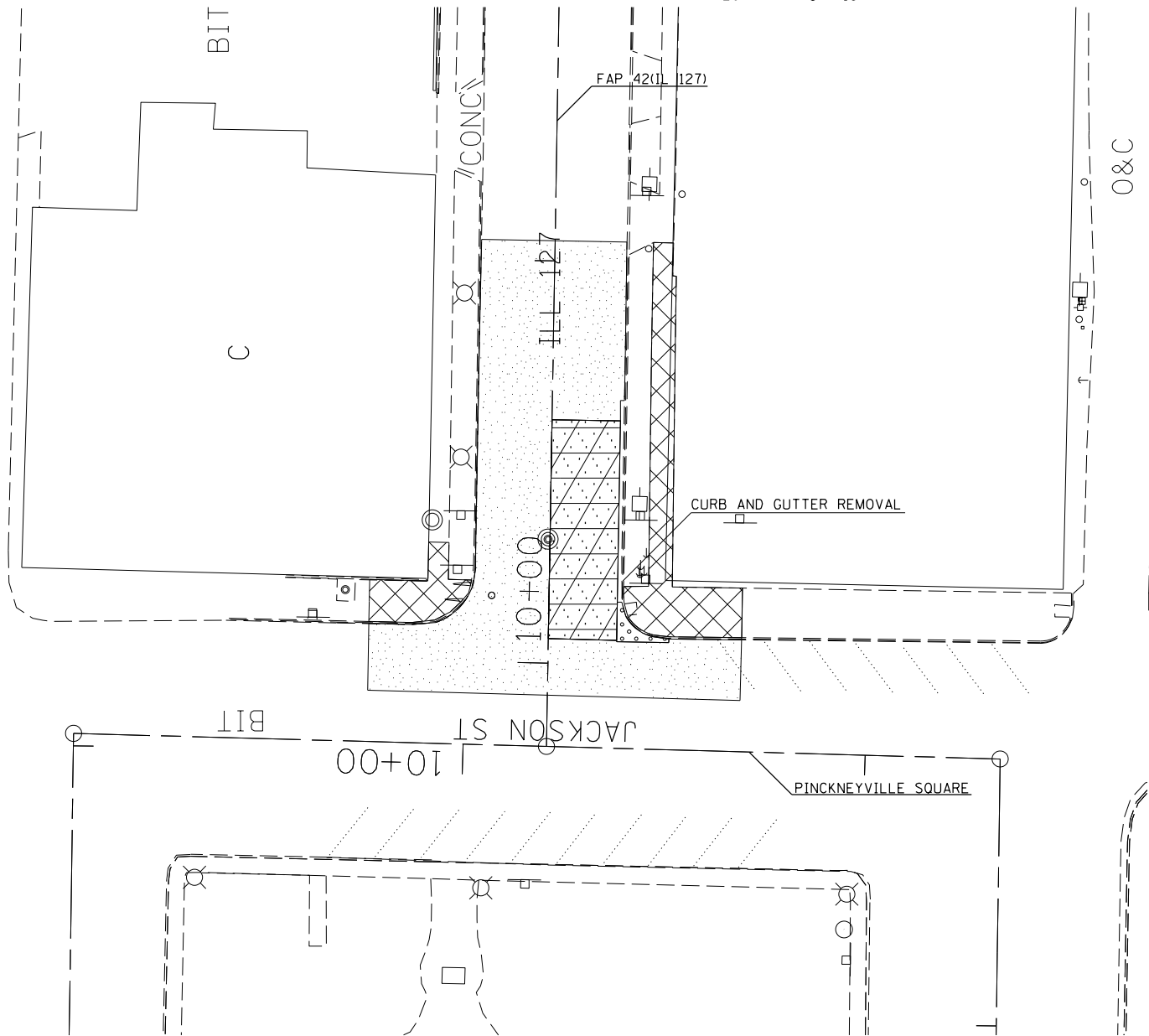
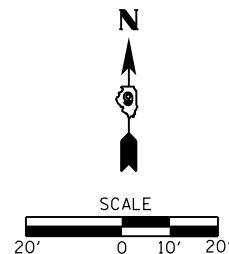
**STATE OF ILLINOIS
DEPARTMENT OF TRANSPORTATION**

**GEOPAK ELEMENTS
IDENTIFICATION SHEET**

SCALE: SHEET OF SHEETS STA. TO STA.

F.A.P. RTE.	SECTION	COUNTY	TOTAL SHEETS	SHEET NO.
42	8(N-1)	PERRY	26	10
CONTRACT NO. 78324				

ILLINOIS FED. AID PROJECT



LEGEND

	SIDEWALK REMOVAL		HMA SURFACE REMOVAL, 2 1/2"
	PAVEMENT REMOVAL		HMA SURFACE REMOVAL, VARIABLE DEPTH

LEGEND

	PORTLAND CEMENT CONCRETE SIDEWALK, 6"		PORTLAND CEMENT CONCRETE SIDEWALK, 4"
	- POLYMERIZED HOT MIX ASPHALT SURFACE COURSE MIX D, N105, 1 1/4"		- POLYMERIZED HOT MIX ASPHALT SURFACE COURSE MIX D, N105, 1 1/4"
	- POLYMERIZED LEVELING BINDER(MACHINE METHOD) IL-9.5 FG, N90, 1 1/4"		- POLYMERIZED LEVELING BINDER(MACHINE METHOD) IL-9.5 FG, N90, 1 1/4"
	- PCC BASE COURSE, 10"		

FILE NAME =	USER NAME = \$USER\$	DESIGNED -	REVISED -
ct:\pw\work\p\id\puff\era\ad0310037\78324-sh\shb-tyr_sch_ties.dgn		DRAWN -	REVISED -
\$MODELNAME\$	PLOT SCALE = 40.0000' / in.	CHECKED -	REVISED -
	PLOT DATE = 2/5/2013	DATE -	REVISED -

**STATE OF ILLINOIS
DEPARTMENT OF TRANSPORTATION**

CONSTRUCTION AND REMOVAL SHEET

SCALE: SHEET OF SHEETS STA. TO STA.

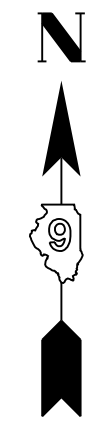
F.A.P. RTE.	SECTION	COUNTY	TOTAL SHEETS	SHEET NO.
42	8(N-1)	PERRY	26	11
CONTRACT NO. 78324				
ILLINOIS FED. AID PROJECT				

PARCEL 330 FOUNDATION FOR THE FUTURE OF PINCKNEYVILLE

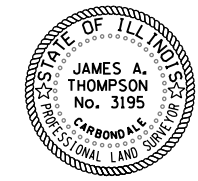
ROW	TEMP. EASE.	TOTAL AREA OF LOTS 15 & 22
0.007 ac±	0.010 ac±	0.453 ac±

COORDINATES

PT JT1	N 515962.05	E 2522495.57
PT JT2	N 515962.14	E 2522489.92
PT JT3	N 515890.74	E 2522494.85
PT JT4	N 515872.61	E 2522514.88
PT JT5	N 515896.53	E 2522488.45
PT MF267	N 515873.22	E 2522487.92



Scale: 1" = 20 feet



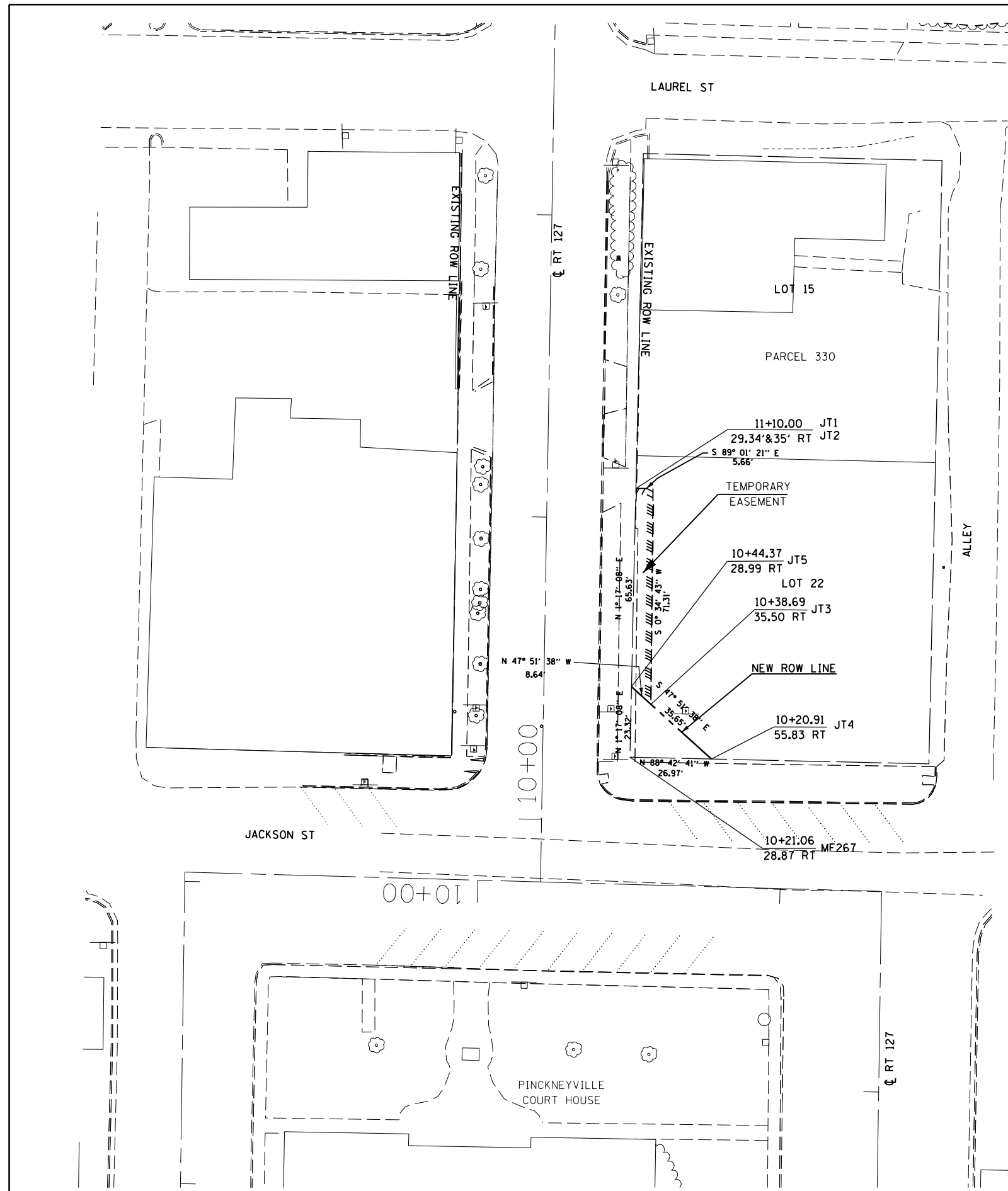
JAMES A. THOMPSON ILLINOIS PROFESSIONAL LAND SURVEYOR NO. 3195

Current license expires 11/2012.

This professional service conforms to the current Illinois minimum standards for a boundary survey.

SURVEYOR'S NOTES

- Survey information for Lots 15 and 22 was taken from a survey performed by Larry Moore, surveyor No. 2134, for The Foundation for the Future of Pinckneyville, Illinois, in February, 2012.

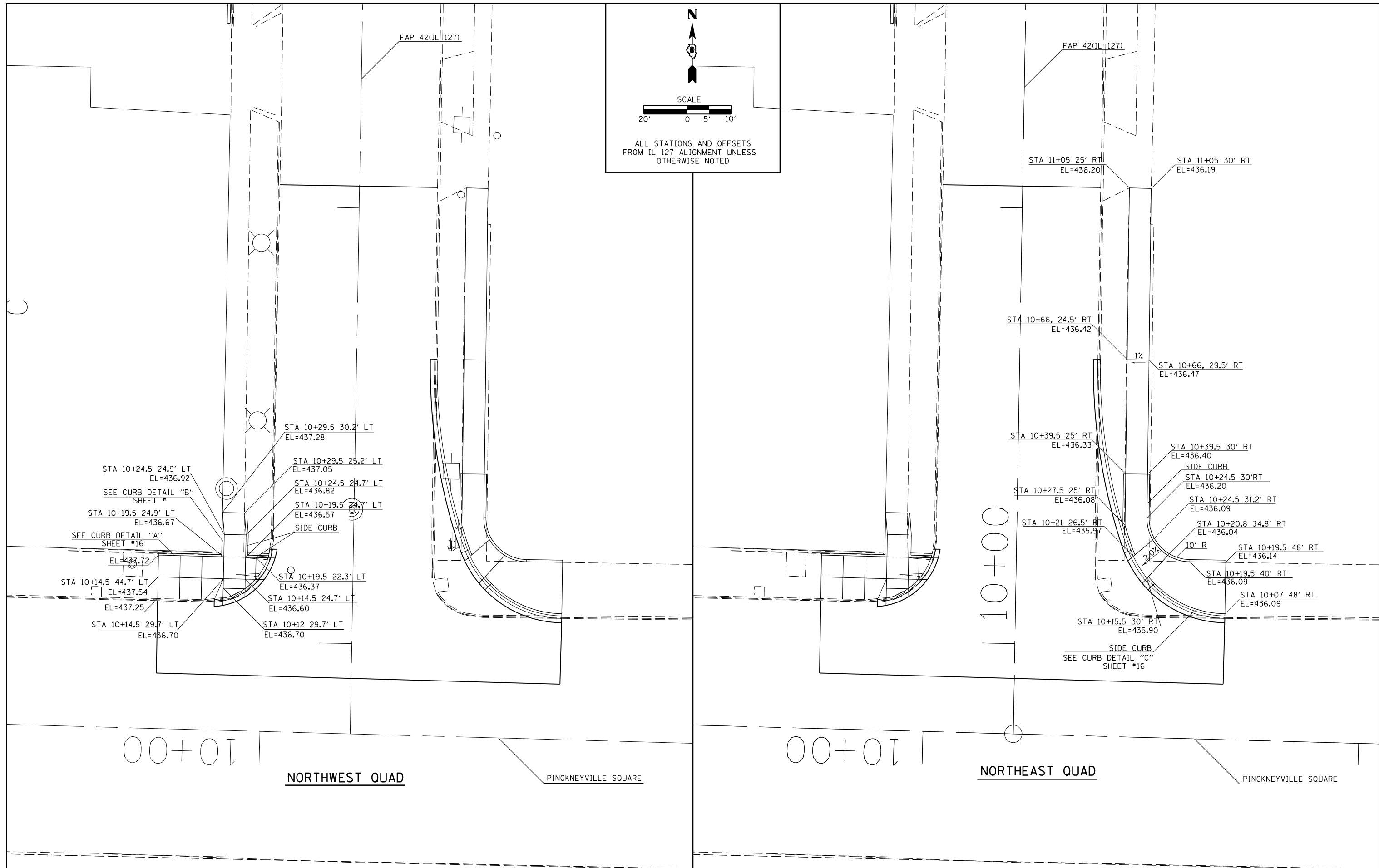


FILE NAME =	USER NAME = pufferaa	DESIGNED -	REVISED -
ct:\pw\work\puidot\pufferaa\10310837\78324-shf-row.dgn		DRAWN -	REVISED -
Default	PLOT SCALE = 40.0000' / in.	CHECKED -	REVISED -
	PLOT DATE = 2/5/2013	DATE -	REVISED -

STATE OF ILLINOIS
DEPARTMENT OF TRANSPORTATION

ROW SHEET	
SCALE: 20'=1"	SHEET 1 OF 1 SHEETS STA. 10+00 TO STA. 12+00

F.A.P. RTE.	SECTION	COUNTY	TOTAL SHEETS	SHEET NO.
42	8(N-1)	PERRY	26	12
CONTRACT NO. 78324				
ILLINOIS FED. AID PROJECT				



ALL STATIONS AND OFFSETS FROM IL 127 ALIGNMENT UNLESS OTHERWISE NOTED

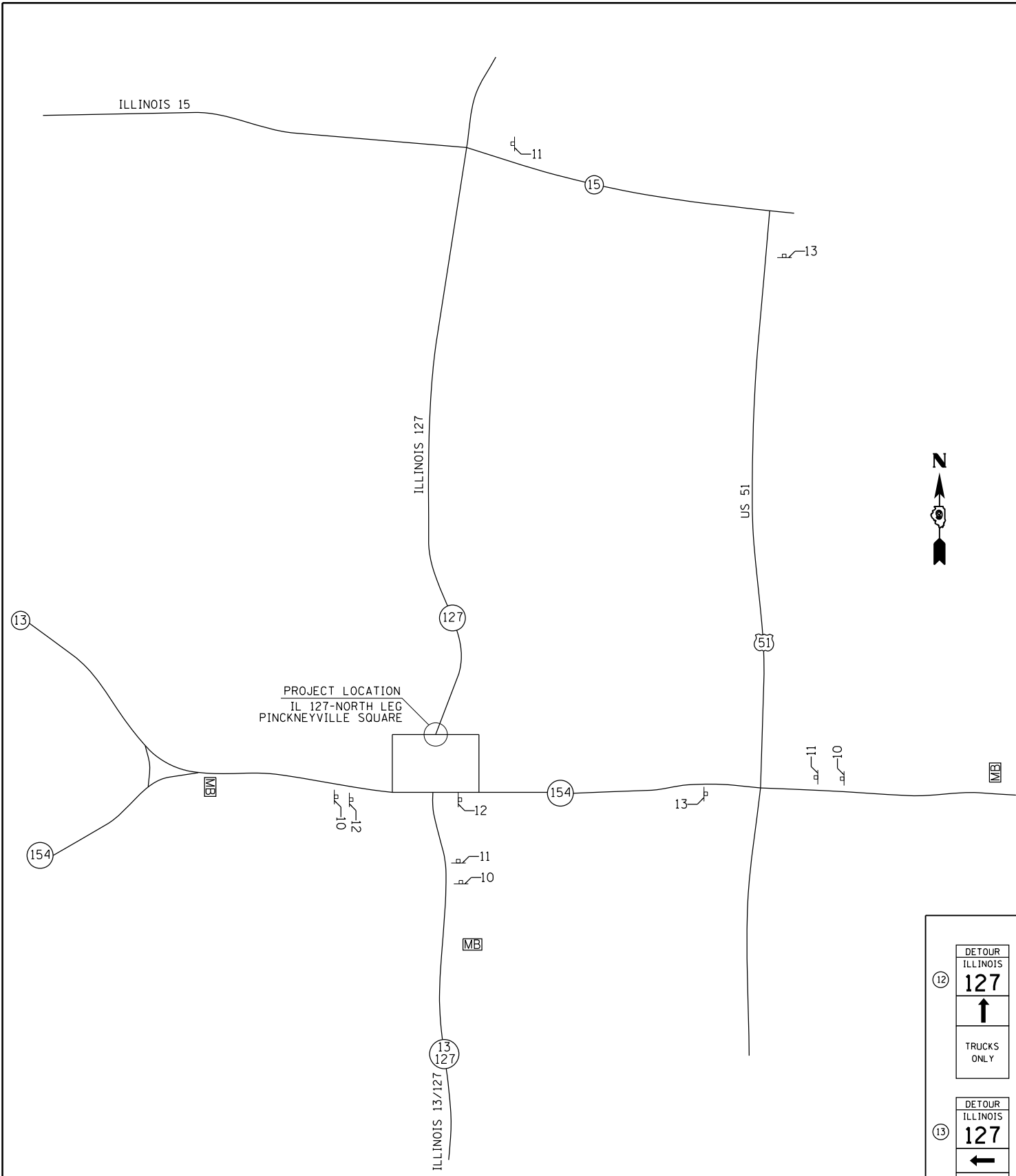
FILE NAME =	USER NAME = \$USER\$	DESIGNED -	REVISED -
c:\pwork\work\pwork\pufferead\0310837\78324-shrb-tpy_sch_ties.dgn		DRAWN -	REVISED -
\$MODELNAME\$	PLOT SCALE = 20.0000' / in.	CHECKED -	REVISED -
	PLOT DATE = 2/5/2013	DATE -	REVISED -

**STATE OF ILLINOIS
DEPARTMENT OF TRANSPORTATION**

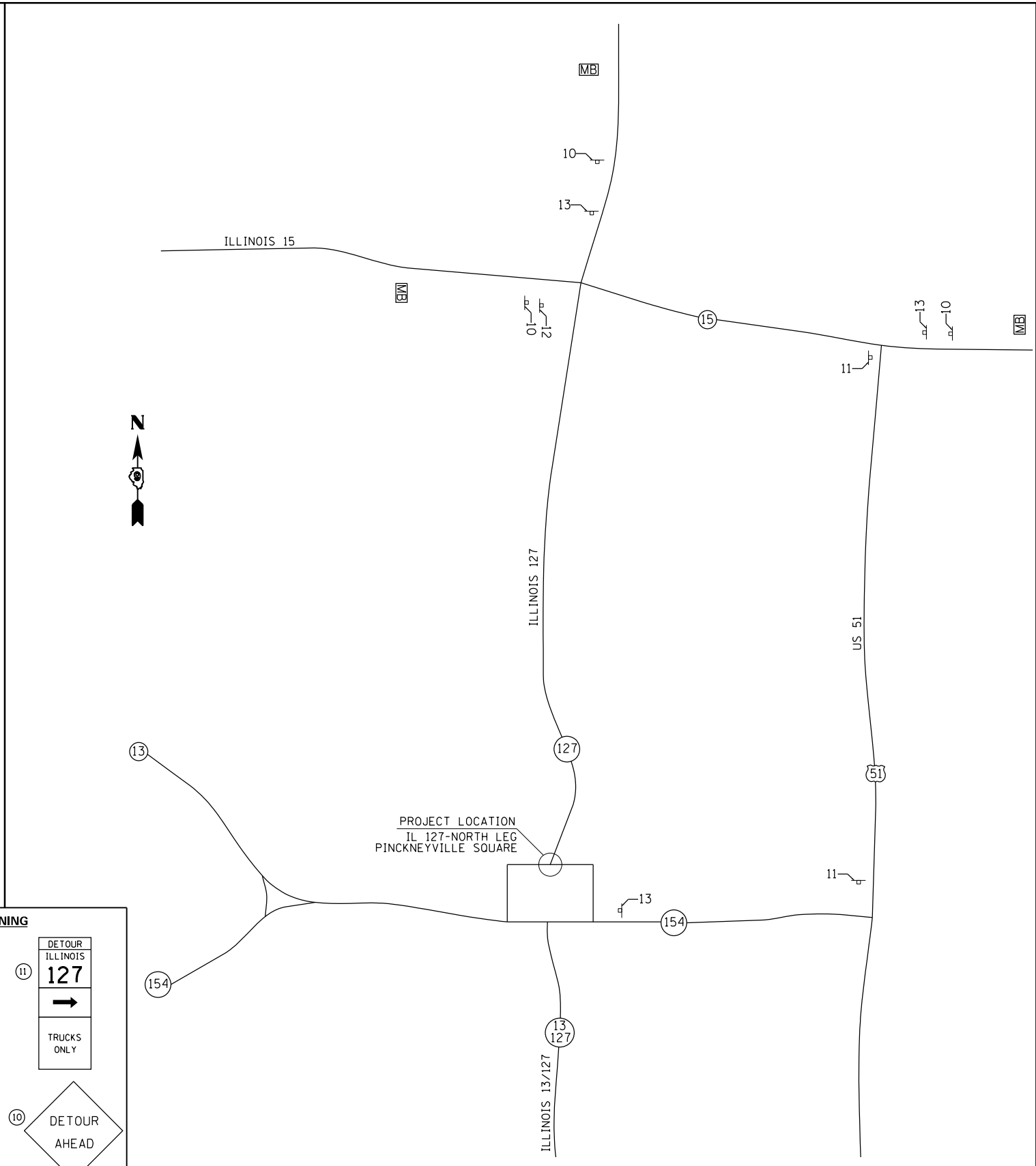
SCALE:		SHEET		OF	SHEETS	STA.	TO STA.

SIDEWALK ELEVATIONS

F.A.P. RTE.	SECTION	COUNTY	TOTAL SHEETS	SHEET NO.
42	8(N-1)	PERRY	26	14
CONTRACT NO. 78324				
ILLINOIS FED. AID PROJECT				



NORTHBOUND TRUCK DETOUR



SOUTHBOUND TRUCK DETOUR

SIGNING

(12) DETOUR ILLINOIS 127 ↑ TRUCKS ONLY	(11) DETOUR ILLINOIS 127 → TRUCKS ONLY
(13) DETOUR ILLINOIS 127 ← TRUCKS ONLY	(10) DETOUR AHEAD TRUCKS ONLY

LEGEND

— SIGN

MB MESSAGE BOARD

NOTE: SEE DETAIL SHEET 17 FOR "TRUCKS ONLY" SIGN INFORMATION

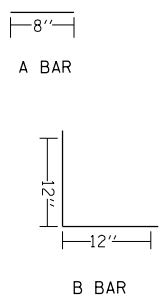
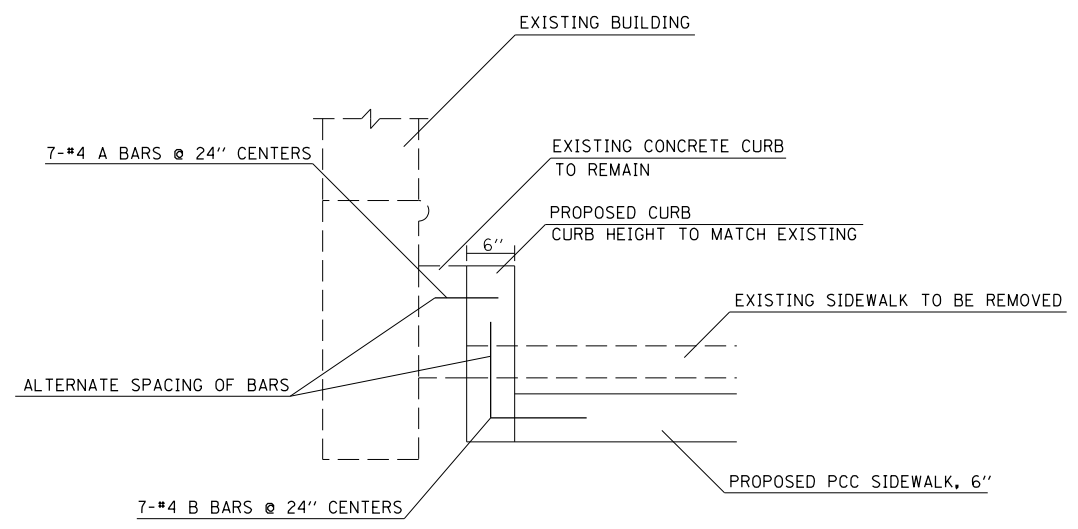
FILE NAME =	USER NAME = \$USER\$	DESIGNED -	REVISED -
c:\pwork\work\pwork\puffere\ad0310037\78324-shrb-tp_sch_ties.dgn		DRAWN -	REVISED -
\$MODELNAME\$	PLOT SCALE = 40.0000' / in.	CHECKED -	REVISED -
	PLOT DATE = 2/5/2013	DATE -	REVISED -

**STATE OF ILLINOIS
DEPARTMENT OF TRANSPORTATION**

TRUCK ROUTE DETOUR

SCALE:	SHEET	OF	SHEETS	STA.	TO	STA.
--------	-------	----	--------	------	----	------

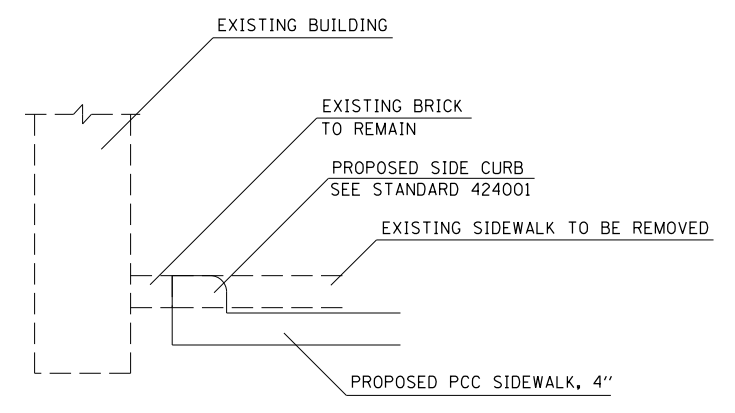
F.A.P. RTE.	SECTION	COUNTY	TOTAL SHEETS	SHEET NO.
42	8(8-1)	PERRY	26	15
CONTRACT NO. 78324				
ILLINOIS FED. AID PROJECT				



CURB DETAIL "A"

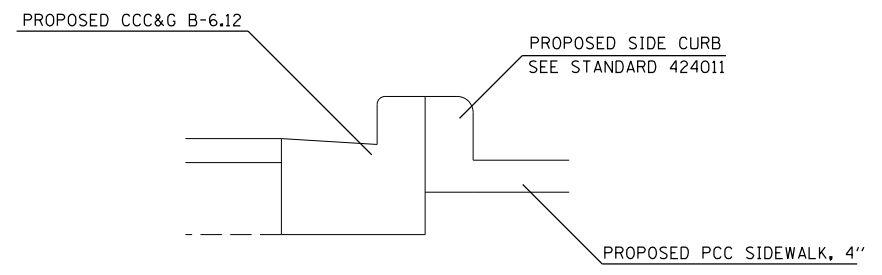
CURB BILL OF MATERIALS

BAR	SIZE	SHAPE	LENGTH	AMOUNT	
				CU. YDS.	LBS.
A	#4	—	8"		3
B	#4	L	24"		10
CONC. STRUCTURES			CU. YDS.		.28
REINF. BARS			LBS.		13



CURB DETAIL "B"

ALL PROPOSED RAMP SIDE CURB TO BE INCLUDED IN THE COST OF PCC SIDEWALK, 4"



CURB DETAIL "C"

ALL PROPOSED RAMP SIDE CURB TO BE INCLUDED IN THE COST OF PCC SIDEWALK, 4"

FILE NAME =	USER NAME = \$USER\$	DESIGNED -	REVISED -
c:\pwork\work\pwork\puffere\ad0310037\78324-shrb-tyr_sch_ties.dgn		DRAWN -	REVISED -
\$MODELNAME\$	PLOT SCALE = 20.0000' / in.	CHECKED -	REVISED -
	PLOT DATE = 2/5/2013	DATE -	REVISED -

STATE OF ILLINOIS
DEPARTMENT OF TRANSPORTATION

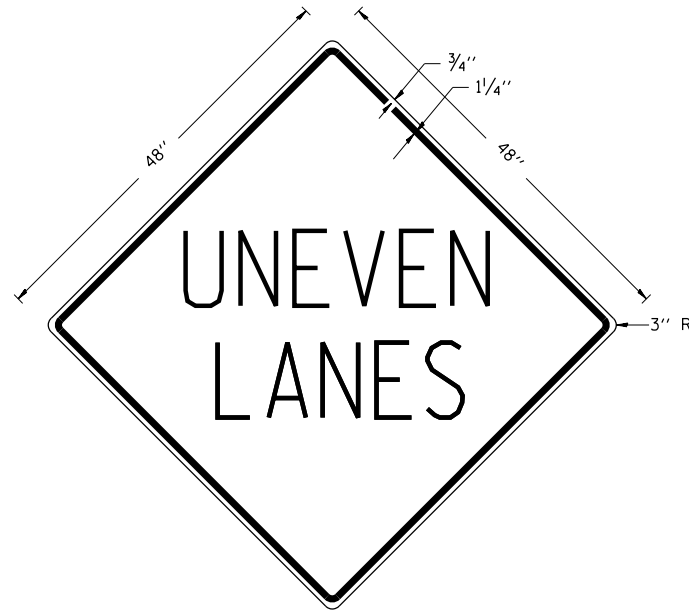
CURB DETAIL SHEET

SCALE: SHEET OF SHEETS STA. TO STA.

F.A.P. RTE.	SECTION	COUNTY	TOTAL SHEETS	SHEET NO.
42	8(N-1)	PERRY	26	16
CONTRACT NO. 78324				
ILLINOIS FED. AID PROJECT				

UNEVEN LANES SIGN

W8-11 (48" x 48")



COLORS:

LEGEND AND BORDER - BLACK NON-REFLECTORIZED
BACKGROUND - ORANGE REFLECTORIZED

NOTE: PRIOR TO ALLOWING TRAFFIC ON ANY PORTION OF THE ROADWAY THAT HAS BEEN COLDMILLED OR BEFORE RESURFACING OPERATIONS BEGIN, THE CONTRACTOR SHALL HAVE ERECTED "UNEVEN PAVEMENT" SIGNS THAT CONFORM TO THE ABOVE DETAILS. A MINIMUM OF ONE SIGN AT EACH END OF THE IMPROVEMENT WILL BE REQUIRED. THE CONTRACTOR SHALL MAINTAIN THE "UNEVEN PAVEMENT" SIGNS UNTIL THE RESURFACING OPERATIONS ARE COMPLETED.

IF AT ANY TIME THE SIGNS ARE IN PLACE BUT NOT APPLICABLE, THEY SHALL BE TURNED FROM THE VIEW OF MOTORISTS OR COVERED AS DIRECTED BY THE ENGINEER.

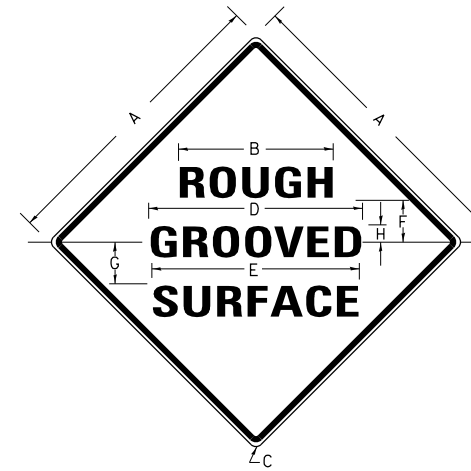
THE COST OF FURNISHING, ERECTING, MAINTAINING, AND REMOVING THE REQUIRED SIGNS SHALL BE INCLUDED IN THE CONTRACT.

REVISIONS	
DRAWN	2-15-89
REVISED	4-06-93
REDESIGNED	7-23-04
RESIZED	5-08-08

STD. 9-41

ILLINOIS STANDARD

W8-I106



COLORS:

LEGEND AND BORDER- BLACK NON-REFLECTORIZED
BACKGROUND- ORANGE REFLECTORIZED

SIGN SIZE	DIMENSIONS							
	A	B	C	D	E	F	G	H
48X48	48.0	24.1	3.0	34.0	33.0	6.0	13.0	3.5

SIGN SIZE	SERIES LINES			MAR- GIN	BOR- DER	BLANK STD.
	1	2	3			
48X48	7C	7C	7C	0.8	1.2	B4-48D

ALL DIMENSIONS IN INCHES

NOTES:

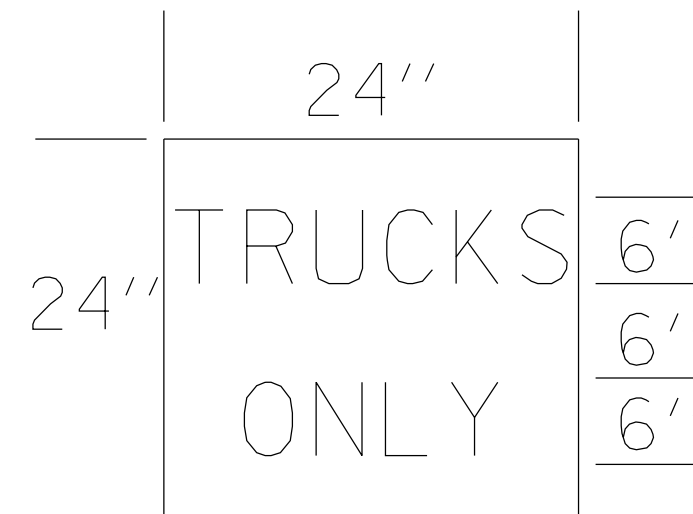
PRIOR TO ALLOWING TRAFFIC ON ANY PORTION OF THE ROADWAY THAT HAS BEEN COLDMILLED, THE CONTRACTOR SHALL HAVE ERECTED "ROUGH GROOVED SURFACE" SIGNS THAT CONFORM TO THE ABOVE DETAILS. A MINIMUM OF ONE SIGN AT EACH END OF THE IMPROVEMENT WILL BE REQUIRED. THE CONTRACTOR SHALL MAINTAIN THE "ROUGH GROOVED SURFACE" SIGNS UNTIL THE COLDMILLED SURFACE IS COVERED WITH LEVELING BINDER OR SURFACE COURSE.

IF AT ANY TIME THE SIGNS ARE IN PLACE BUT NOT APPLICABLE, THEY SHALL BE TURNED FROM THE VIEW OF MOTORISTS OR COVERED AS DIRECTED BY THE ENGINEER.

THE COST OF FURNISHING, ERECTING, MAINTAINING, AND REMOVING THE REQUIRED SIGNS SHALL BE INCLUDED IN THE CONTRACT.

REVISIONS	
REDRAWN	2-15-89
REVISED	4-6-93
REVISED	3-27-08

STD. 9-39



DETOUR SIGNS

FILE NAME =	USER NAME = \$USER\$	DESIGNED -	REVISED -
ct:\pw\work\p1dot\puffera\ad0310037\78324-shrb-tpg_sch_ties.dgn		DRAWN -	REVISED -
\$MODELNAME\$	PLOT SCALE = 20.0000' / in.	CHECKED -	REVISED -
	PLOT DATE = 2/5/2013	DATE -	REVISED -

STATE OF ILLINOIS
DEPARTMENT OF TRANSPORTATION

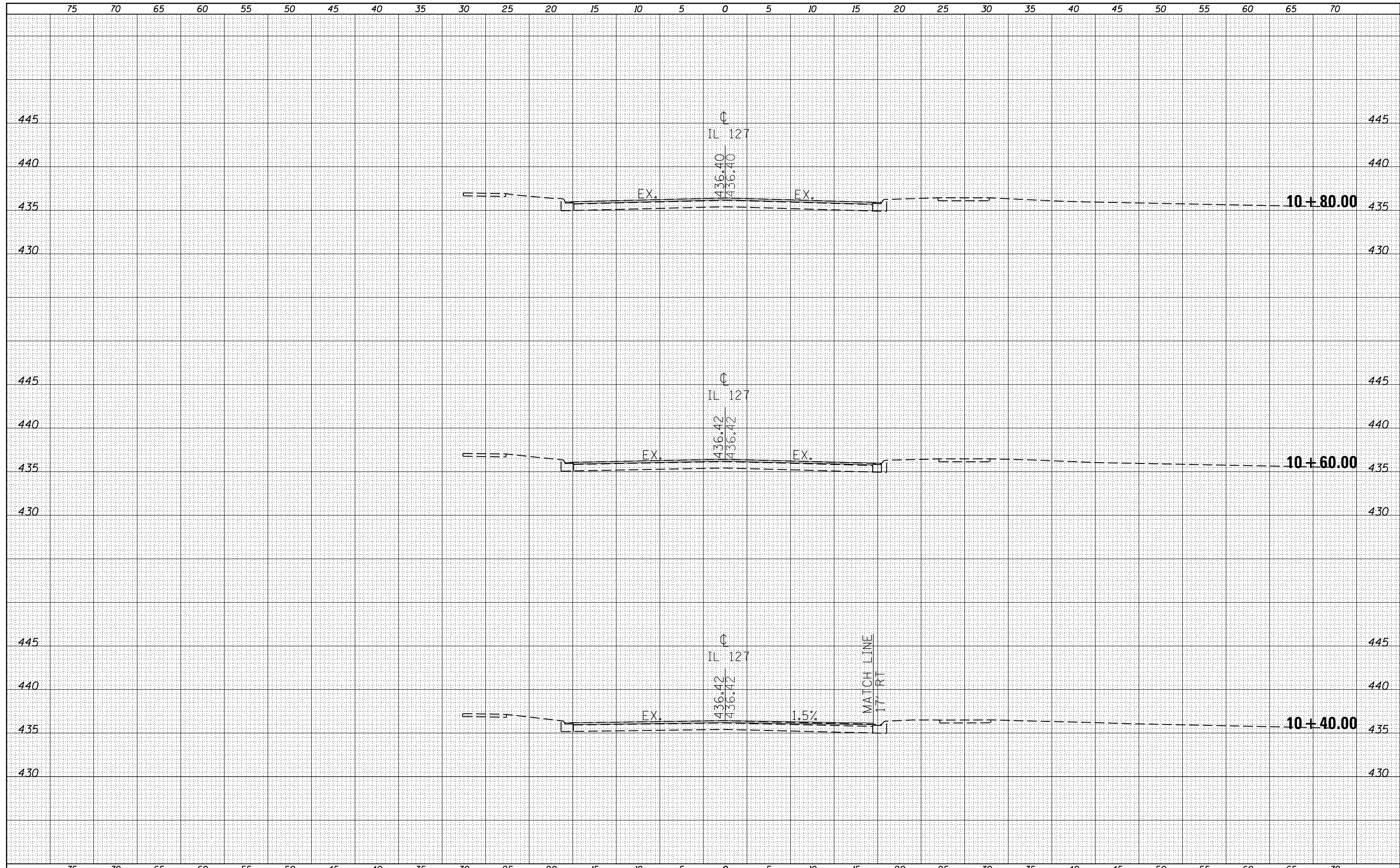
SIGN DETAIL SHEET

SCALE: SHEET OF SHEETS STA. TO STA.

F.A.P. RTE.	SECTION	COUNTY	TOTAL SHEETS	SHEET NO.
42	8(N-1)	PERRY	26	17
			CONTRACT NO. 78324	
ILLINOIS FED. AID PROJECT				

DATE	
BY	
FINAL SURVEY	SURVEYED
NOTE BOOK	PLOTTED
NO.	TEMPLATE
	AREAS CHECKED

DATE	
BY	
ORIGINAL SURVEY	SURVEYED
NOTE BOOK	PLOTTED
NO.	TEMPLATE
	AREAS CHECKED



FILE NAME =	USER NAME = \$USER\$	DESIGNED -	REVISED -	STATE OF ILLINOIS DEPARTMENT OF TRANSPORTATION	CROSS SECTIONS - IL 127				F.A.P. RTE.	SECTION	COUNTY	TOTAL SHEETS	SHEET NO.
ca:\pw_work\pwidot\pufferae\d0310837\78324-sh\j	xsections.dgn	DRAWN -	REVISED -		42	8(N-1)	Perry	26	19				
		CHECKED -	REVISED -		CONTRACT NO. 78324				ILLINOIS FED. AID PROJECT				
\$MODELNAME\$		DATE -	REVISED -		SCALE:	SHEET	OF	SHEETS	STA. 10+40.00	TO STA. 10+80.00			

