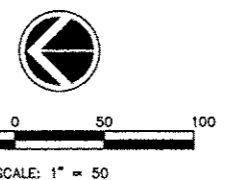
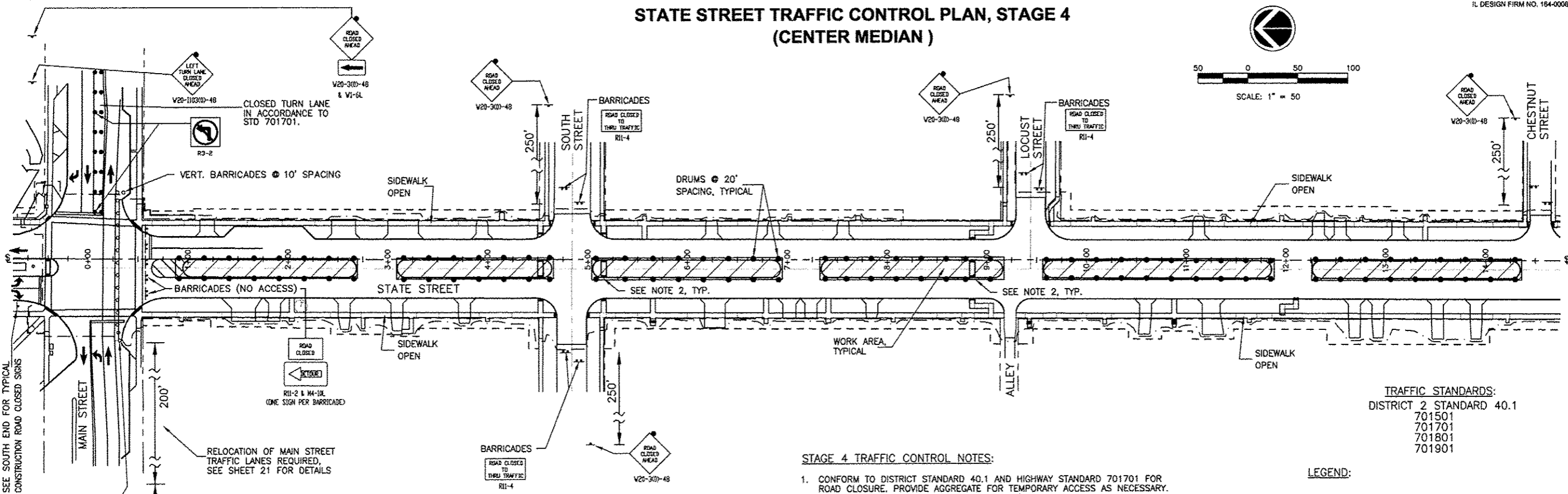


STATE STREET TRAFFIC CONTROL PLAN, STAGE 4 (CENTER MEDIAN)

IL DESIGN FIRM NO. 184-006843



TRAFFIC STANDARDS:
DISTRICT 2 STANDARD 40.1
701501
701701
701801
701901

STAGE 4 TRAFFIC CONTROL NOTES:

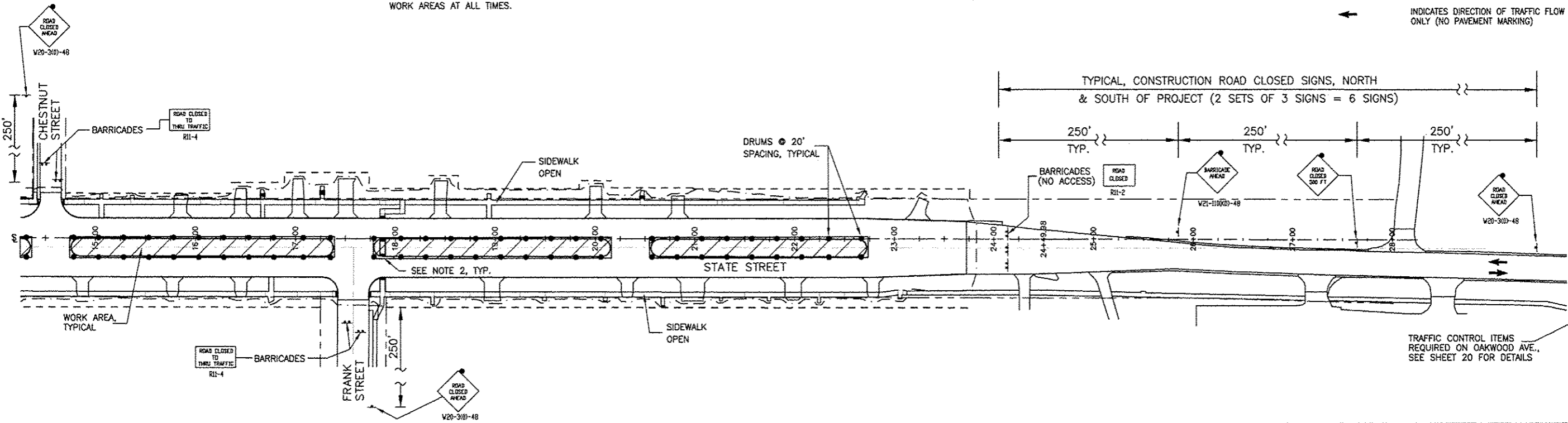
1. CONFORM TO DISTRICT STANDARD 40.1 AND HIGHWAY STANDARD 701701 FOR ROAD CLOSURE. PROVIDE AGGREGATE FOR TEMPORARY ACCESS AS NECESSARY.
2. MAINTAIN PEDESTRIAN ACCESS TO PROPERTY / BUSINESSES. SAFETY FENCE SHALL BE ERECTED BETWEEN ALL OPEN PEDESTRIAN AREAS AND ADJACENT WORK AREAS. MAINTAIN ALL EAST-WEST SIDE STREET PEDESTRIAN TRAFFIC MOVEMENTS ACROSS THE WORK AREAS AT ALL TIMES.
3. CONFORM TO STANDARD 701801 FOR SIDEWALK CLOSURES. SIDEWALKS ON BOTH SIDES OF THE STREET SHALL NOT BE CLOSED AT THE SAME TIME. PEDESTRIAN ACCESS SHALL BE MAINTAINED AT ALL TIMES. INSTALL 4" THICK, 4" WIDE TEMPORARY HMA SIDEWALKS (PER TYPICAL SECTION) AS REQUIRED TO MAINTAIN ACCESS.
4. COORDINATE WITH LOCAL RESIDENTS AND BUSINESSES A MINIMUM OF 48 HOURS PRIOR TO RESTRICTING ACCESS TO DRIVEWAYS AND BUSINESS ENTRANCES.
5. PROVIDE A MINIMUM OF 2 WEEKS NOTICE TO BUSINESSES AND THE CITY OF GENESEO PRIOR TO FULL CLOSURE OF THE TRAVEL LANE OR SIDEWALK.
6. IF A PROPERTY AND / OR BUSINESS HAS TWO ACCESS DRIVEWAYS AS DETERMINED BY THE ENGINEER, THE REMOVAL AND REPLACEMENT OF THE TWO DRIVEWAYS SHALL NOT OCCUR SIMULTANEOUSLY. ONE PAVED DRIVEWAY SHALL BE OPEN TO THE PROPERTY AND / OR BUSINESS AT ALL TIMES.

LEGEND:

- WORK AREA
- TYPE III BARRICADE WITH FLASHERS
- DETECTABLE PEDESTRIAN CHANNELLING (DPC) BARRICADE
- BARRICADE OR DRUM WITH LIGHT
- SIGN WITH FLASHING LIGHT
- SIGN ON PORTABLE OR PERMANENT SUPPORT
- DRUM WITH LIGHT
- VERTICAL BARRICADE WITH LIGHT
- INDICATES DIRECTION OF TRAFFIC FLOW ONLY (NO PAVEMENT MARKING)

STAGE 4 TRAFFIC STATUS:

1. SOUTH STATE STREET CLOSED. TRAFFIC DETOUR REQUIRED. SEE SHEET 20 FOR THE OAKWOOD AVENUE DETOUR PLAN. SEE SHEET 21 FOR RELOCATION OF MAIN STREET TRAFFIC LANES.
2. MAINTAIN TWO WAY ACCESS TO DRIVEWAYS. LOCAL TRAFFIC ACCESS FROM SIDE STREETS SHALL BE MAINTAINED.
3. COVER THE LEFT TURN ARROW SIGNAL HEAD FOR THE MAIN STREET WEST BOUND TRAFFIC TURNING SOUTH ONTO STATE STREET AND CLOSE TURN LANE ACCORDING TO HIGHWAY STANDARD 701701.
4. CONTRACTOR SHALL MAINTAIN SIDEWALKS ACROSS WORK AREAS AT ALL TIMES.



TRAFFIC CONTROL ITEMS REQUIRED ON OAKWOOD AVE., SEE SHEET 20 FOR DETAILS

REVISIONS	DATE
No.	DESCRIPTION

MISSMAN, INC.
Professional Engineers & Land Surveyors

Rock Island, IL • Bettendorf, IA • Rockford, IL • Sycamore, IL
(309) 788-7654 • (663) 344-0268 • (815) 965-6400 • (616) 865-5825
www.missman.com

STATE STREET RE-CONSTRUCTION
GENESEO, ILLINOIS

TRAFFIC CONTROL PLAN - STAGE 4

Missman Project No: A10M008
File Name: A10M008 TRAFFIC CONTROL.dwg
© COPYRIGHT 2013 ALL RIGHTS RESERVED
Field Book No: #####
Drawn By: JNM
Checked By: JLM
Date: 11/19/2012

G:\2010\UNA 10M008-Geneseo- S.State St. Sewer\WaterDrawings\Plan\A10M008 TRAFFIC CONTROL.dwg, 3/7/2013 1:14:52 PM, jefim