

04-26-13 LETTING ITEM 093

INDEX OF SHEETS

Sheet No.	Description
1	COVER SHEET
2	TYPICAL CROSS SECTION AND DETAILS
3	DETAILS

STANDARDS

701306-03 TRAFFIC CONTROL
701901-02 TRAFFIC CONTROL

SUMMARY OF QUANTITIES

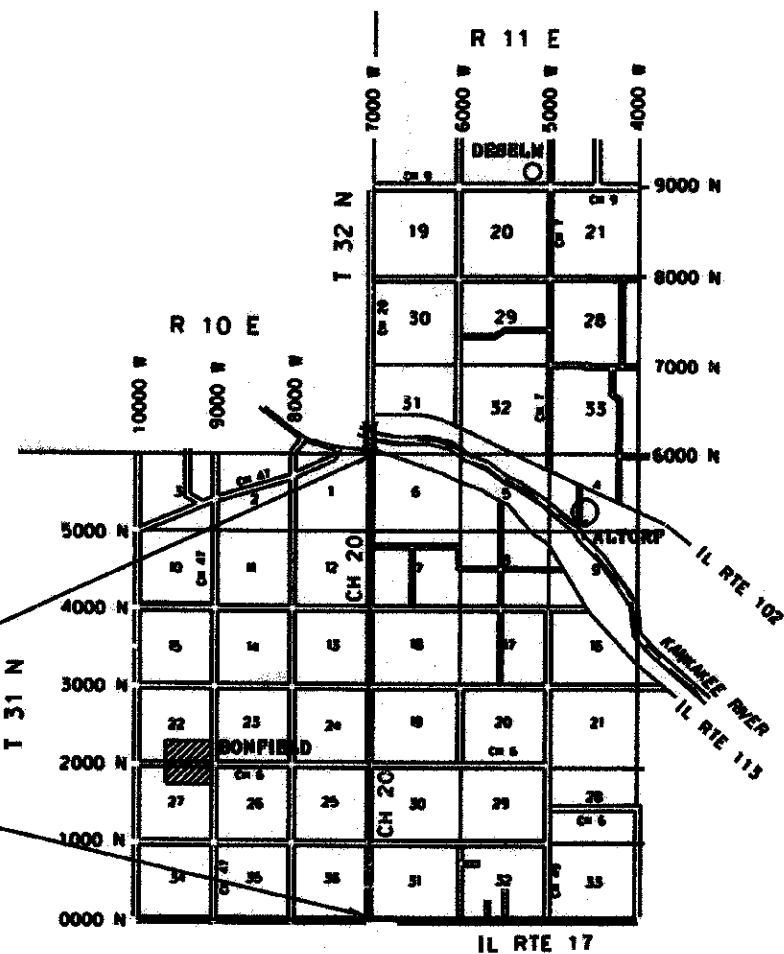
CODE NO.	Description	Quantity	Unit
•40600100	BITUMINOUS MATERIALS (PRIME COAT)	8037	GALLON
40600300	AGGREGATE (PRIME COAT)	157	TON
•40600625	LEVELING BINDER (MACHINE METHOD), N50	3740	TON
40600982	HMA SURFACE REMOVAL - BUTT JOINT	730	SO YD
40600990	TEMPORARY RAMP	86	SO YD
•40603310	HOT-MIX ASPHALT SURFACE COURSE-MIX C-N50	6469	TON
40800050	INCIDENTAL HOT-MIX ASPHALT SURFACING	190	TON
•48101200	AGGREGATE SHOULDERS - TYPE B	3529	TON
67100100	MOBILIZATION	1	LUMP SUM
70100460	TRAFFIC CONTROL AND PROTECTION, STANDARD 701306	1	LUMP SUM
•70300100	SHORT-TERM PAVEMENT MARKING	6202	FOOT

- Special Provisions
- Specialty Item

CONSTRUCTION STARTS
STA. 22+54

CONSTRUCTION ENDS
STA. 332+63

Construction Code 0005



LOCATION MAP
-NO SCALE-

GROSS LENGTH= 31.009 LIN FEET / NET LENGTH = 31.009 LIN FT / 5.873 MILES

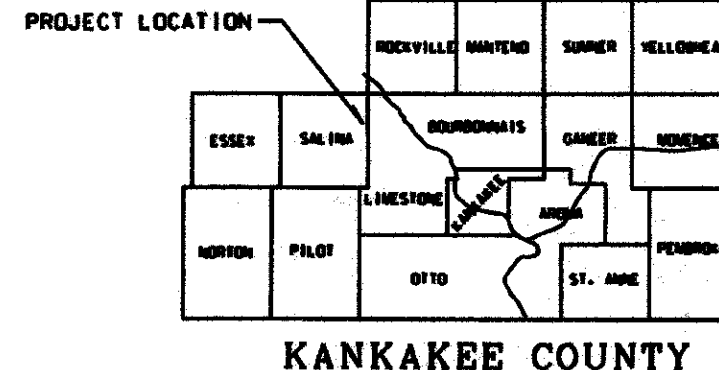
JOB NO. C-93-088-12
CONTRACT NO. 87527

J.U.L.I.E. 1-800-892-0123

STATE OF ILLINOIS
DEPARTMENT OF TRANSPORTATION
COUNTY OF KANKAKEE
DIVISION OF HIGHWAYS
PLANS FOR PROPOSED
FEDERAL AID SECONDARY PROJECT
SECTION 08-00072-08-RS
F.A.S. 302 (CH.20)
PROJECT NO. RS-0302 (104)
JOB NO. C-93-088-12

F.A.S. ROUTE NO.	SEC.	COUNTY	NO. SHEETS	SHEET NO.
302	*	Kankakee	3	1

ILLINOIS PROJECT C-93-088-12 CONTRACT NO. 87527
• 08-00072-08-RS



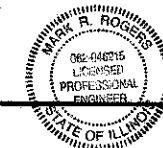
THE ACCEPTANCE OF THIS PROJECT IS BASED ON THE MINIMUM DESIGN CRITERIA FOR LOCAL AGENCY PAVEMENT PRESERVATION POLICY (L.A.F.O.) PROJECTS

CLASS II ROAD
CURRENT A.D.T. = 2900
DESIGN A.D.T. = 3141
DESIGN SPEED = 55 M.P.H.

STATE OF ILLINOIS
DEPARTMENT OF TRANSPORTATION
DIVISION OF HIGHWAYS

Submitted 01/15 2013

Mark R. Rogers, P.E.
County Engineer



Passed 1-29 2013

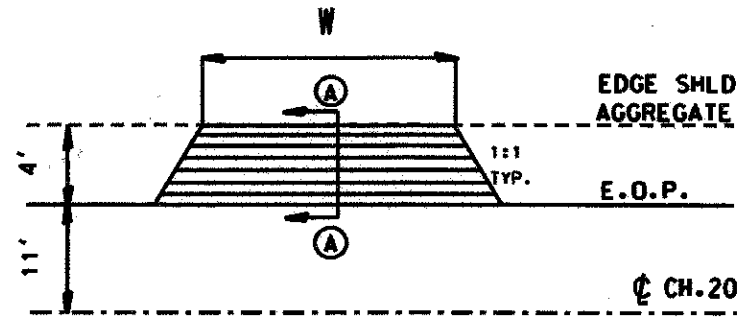
Donald R. Ernst
District 3 Local Roads and Streets Engineer

RELEASED FOR BID BASED ON LIMITED REVIEW 1-29 2013

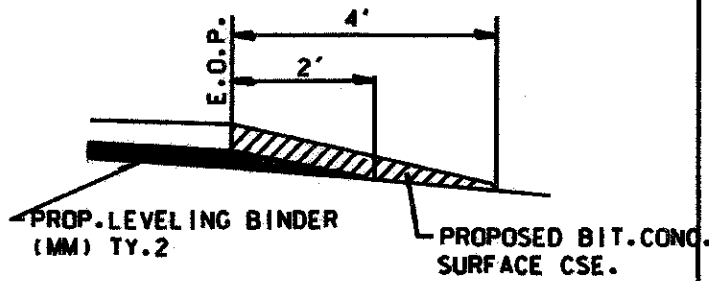
Paul A. Loete
Deputy Director of Highways, Region Two Engineer

TYPICAL ENTRANCE DETAIL

W: WIDTH OF APPROACH PADS IS ESTIMATED AT 20' PER ENTRANCE. THE ACTUAL CONSTRUCTED WIDTH MAY VARY AS DIRECTED BY THE ENGINEER TO FIT THE EXISTING ENTRANCES.

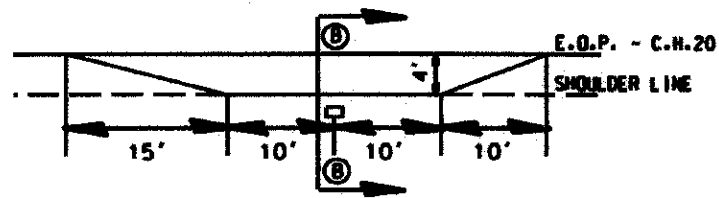


SECTION A-A

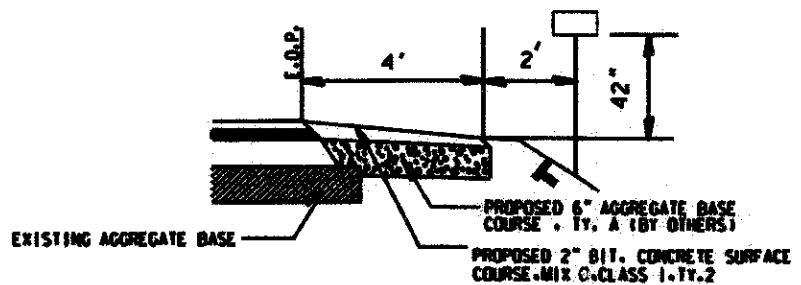


ITEM	UNIT	QUANTITY
BITUMINOUS MATERIALS (PRIME COAT)	GAL	58
LEVELING BINDER(MM) TY.2	TON	16
BIT. CONC. SURFACE CSE. MIX C CL 1 TY. 2	TON	41

TYPICAL MAILBOX TURNOUT DETAIL



SECTION B-B



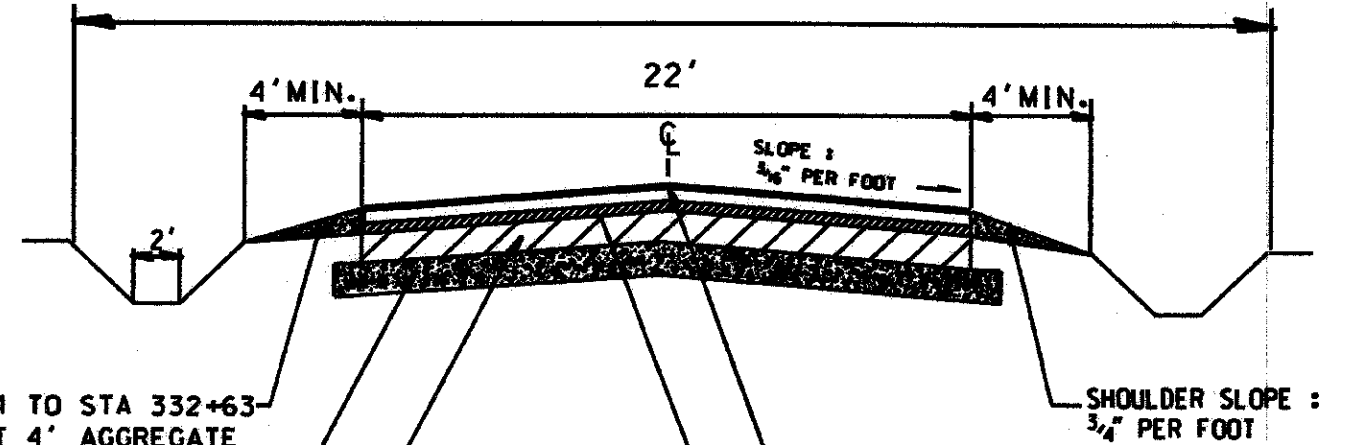
ITEM	UNIT	QUANTITY
BIT. MATERIALS (PRIME COAT)	GAL	304
MIX C, CLASS 1, TY. 2	TON	61
BIT. CONC. SURFACE CSE.		

STATION	SIDE	STATION	SIDE
35+55	RT	206+35	RT
40+53	RT	207+38	RT
42+43	RT	208+12	RT
79+94	RT	208+42	RT
83+55	RT	214+68	RT
125+64	RT	218+67	RT
127+97	RT	248+74	LT
138+07	RT	255+12	LT
152+54	RT	255+61	RT
154+33	RT	257+41	LT
158+86	RT	258+74	LT
162+02	RT	259+23	LT
163+10	RT	261+00	LT
182+03	RT	261+86	LT
187+02	RT	264+65	LT
195+57	RT	269+11	LT
199+91	RT	271+53	LT
200+28	RT	287+31	LT
201+10	RT	295+92	LT
201+64	RT	299+70	LT
203+60	RT	306+36	RT
204+61	RT	318+05	RT
205+36	RT		

SECTION	COUNTY	TOTAL SHEETS	SHEET NO.
08-00072-08-RS	KANKAKEE	3	2
ILLINOIS PROJECT C-93-088-12		CONTRACT NO. 87527	

TYPICAL CROSS SECTION STA 22+54 TO STA 332+63

VARIES: 60' to 70' R.O.W.



STA 22+54 TO STA 332+63
CONSTRUCT 4' AGGREGATE
SHOULDERS TY.B

EXISTING 7" AGGREGATE
BASE

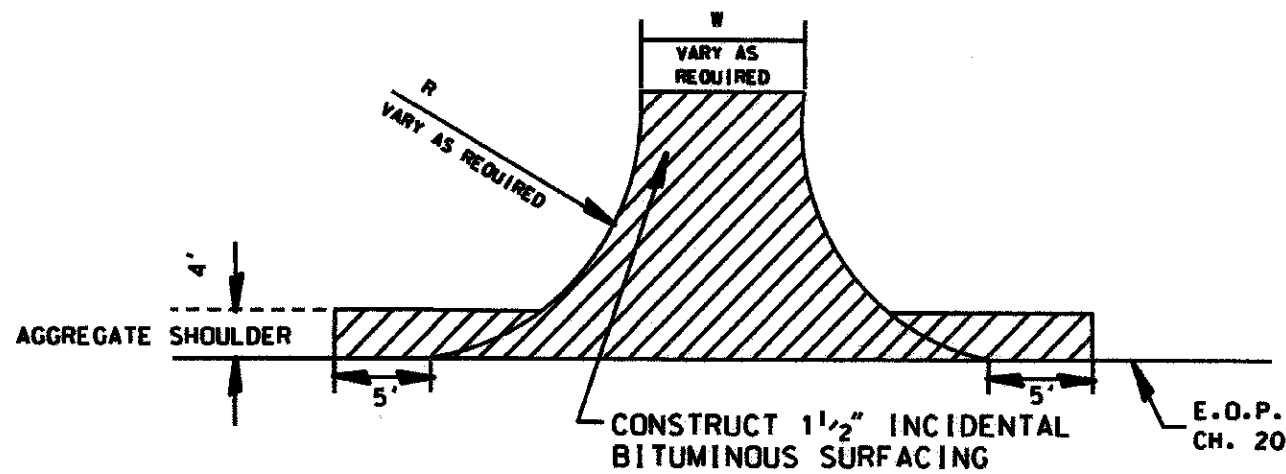
EXISTING 11 1/2" BIT.
CONC. SURFACE

STA 22+54 TO STA 332+63
CONSTRUCT HOT-MIX ASPHALT
SURFACE CSE. MIX C, CLASS 1
TY. 2 1 1/2" THICK, 22' WIDE

Sta. 22+79 TO Sta. 332+38
CONSTRUCT LEVELING BINDER
(MACHINE METHOD) TY. 2,
3/4" THICK, 22' WIDE

ITEM	UNIT	QUANTITY
AGGREGATE SHOULDERS TY.B	TON	3529
BITUMINOUS MATERIALS (PRIME COAT)	GALLON	7992
AGGREGATE (PRIME COAT)	TON	157
LEVELING BINDER (MM), NSO	TON	3724
HOT-MIX ASPHALT SURF. CSE. MIX C, NSO	TON	6367
SHORT-TERM PAVEMENT MARKING	FOOT	6202

INTERSECTION DETAIL



INTERSECTION QUANTITY SCHEDULE

STATION	SIDE	WIDTH	RADIUS	INCIDENTAL BIT. SURFACING	BIT. MATRLS. (PRIME COAT)	AGGREGATE (PRIME COAT)	LOCATION
				(TON)	(GAL)	(TON)	
22+54	—	22	25	10	5	0.5	IL RTE 113
80+26	LT	16	30	15	10	0.5	4750N
120+23	RT	20	30	15	10	0.5	4000N
120+33	LT	17	30	15	10	0.5	4000N
173+31	RT	17	30	15	10	0.5	3000N
173+66	LT	17	30	15	10	0.5	3000N
226+60	LT	20	30	15	10	0.5	2000N
226+60	RT	20	30	15	10	0.5	2000N
248+03	LT	30	30	15	10	0.5	1589N
249+30	LT	30	30	15	10	0.5	1589N
279+82	RT	18	30	15	10	0.5	1000N
280+12	LT	19	30	15	10	0.5	1000N
332+63	—	—	50	15	13	0.5	IL RTE 17
TOTALS				190	128	6.5	

* INCLUDES RADII ONLY. TANGENT INCLUDED IN MAINLINE QUANTITIES.

Pavement Design Data

Design Period = 15 Years

ADT = 2900 (2012) 3141 (2020)

P.V. = 88% = 2764 S.U. = 7.0% = 220 M.U. = 5.0% = 157

I.B.V. = 15

T.F. = 0.64

S.N. = 4.14

Pavement Structure Number

Ex. 7" Agg. Base 7 x 0.08 = 0.56

Ex. 2" Bit. Conc. Subclass B-5 2 x 0.17 = 0.34

Ex. 4.5" Bit. Conc. Surfacing 4.5 x 0.23 = 1.04

Ex. 2 1/4" CL.I Bit. Surfacing 2.75 x 0.23 = 0.63

Ex. 2 1/4" Bit. Conc. Surface CL.I 2.25 x 0.30 = 0.68

Prop. 2 1/4" Bit. Conc. Surf. CL.I 2.25 x 0.40 = 0.90

4.14

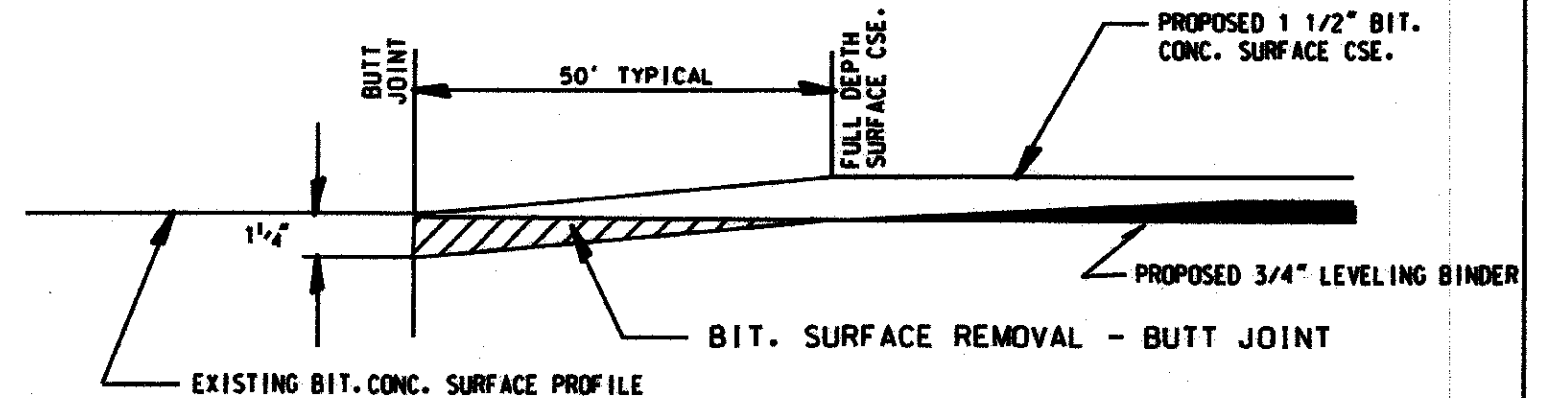
Marshall Stability ≥ 1700

	LEVEL BINDER	HMA SURFACE
PG GRADE	PG64-22	PG64-22
MAX% RAP ALLOWABLE	SEE SPECIAL PROVISIONS	SEE SPECIAL PROVISIONS
DESIGN AIR VOIDS	4% @ N50	4% @ N50
MIXTURE COMPOSITION	IL 9.5	IL 9.5
FRICTION AGGREGATE		MIXTURE 0
DENSITY TEST METHOD	Satisfaction of Engineer	% OF GROWTH CURVE

** IF RAP OPTION IS SELECTED, THE ASPHALT CEMENT GRADE MAY NEED TO BE ADJUSTED. THIS WILL BE DETERMINED BY THE ENGINEER.

SECTION	COUNTY	TOTAL SHEETS	SHEET NO.
08-00072-08-RS	KANKAKEE	3	3
ILLINOIS PROJECT C-93-088-12		CONTRACT NO. 87527	

TYPICAL BUTT JOINT DETAIL



BITUMINOUS SURFACE REMOVAL AND TEMPORARY RAMP SCHEDULE

STA TO STA	BIT. SURFACE REMOVAL - BUTT JOINT	TEMPORARY RAMP (3' Wide)	LOCATION
22+54 to 22+79*	91 50 YDS	24 50 YDS	IL RTE 113
80+26 LT 35' TO LT 50'	27		4750 N
120+23 RT 35' TO RT 50'	33		4000 N
120+23 LT 35' TO LT 50'	28		4000 N
173+31 RT 35' TO RT 50'	28		3000 N
173+66 RT 35' TO RT 50'	28		3000 N
226+60 RT 31' TO RT 56'	56	7	2000 N
226+60 LT 31' TO LT 56'	56	7	2000 N
248+03 LT 15' TO RT 21'	34		1589 N
249+30 LT 15' TO RT 21'	34		1589 N
279+82 RT 35' TO RT 50'	30		1000 N
280+12 LT 35' TO LT 50'	32	7	1000 N
332+13 to 332+63**	253	41	IL RTE 17
TOTALS	730 50 YDS	86 50 YDS	

* STA 22+54 IS THE SOUTH EDGE OF PAVEMENT IL RT 113

** STA 332+63 IS THE NORTH EDGE OF PAVEMENT OF IL RT.17

GENERAL NOTES:

IT SHALL BE THE CONTRACTOR'S RESPONSIBILITY TO DETERMINE THE ACTUAL LOCATION OF ALL UTILITY LOCATIONS.