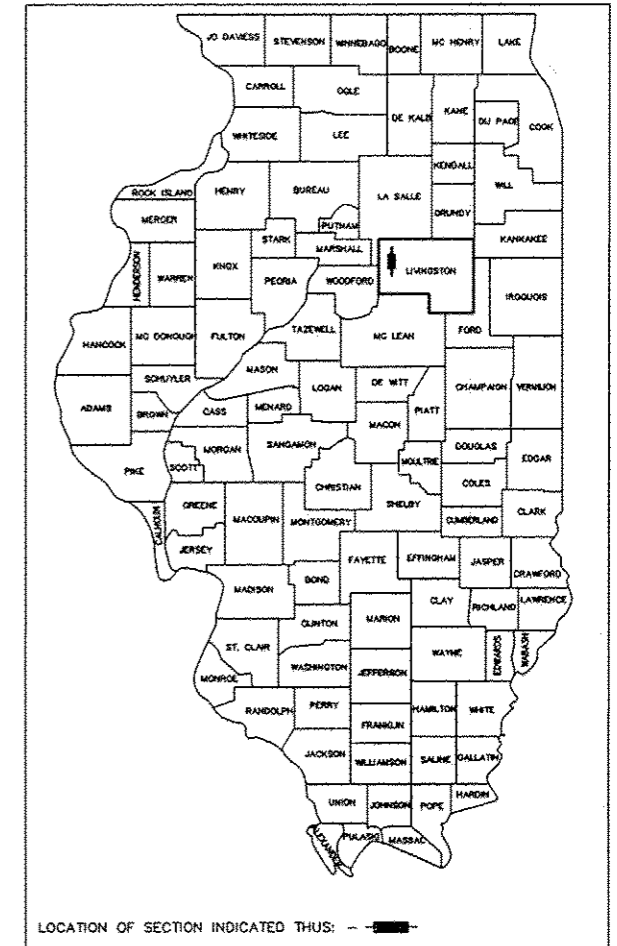
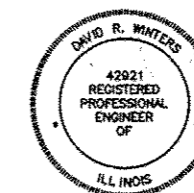


ROUTE NO.	SECTION	COUNTY	TOTAL SHEETS	SHEET NO.
355	10-00196-03-RS	LIVINGSTON	5	1

PROJECT NO. RS-0355(121)



LOCATION OF SECTION INDICATED THUS: ———



THESE PLANS WERE MADE BY ME OR BY A MEMBER OF MY STAFF WORKING UNDER MY PERSONAL SUPERVISION.

02-09-13 DATE  
 COUNTY ENGINEER, P.E. NO. 42921  
 EXPIRATION DATE 11/30/2013

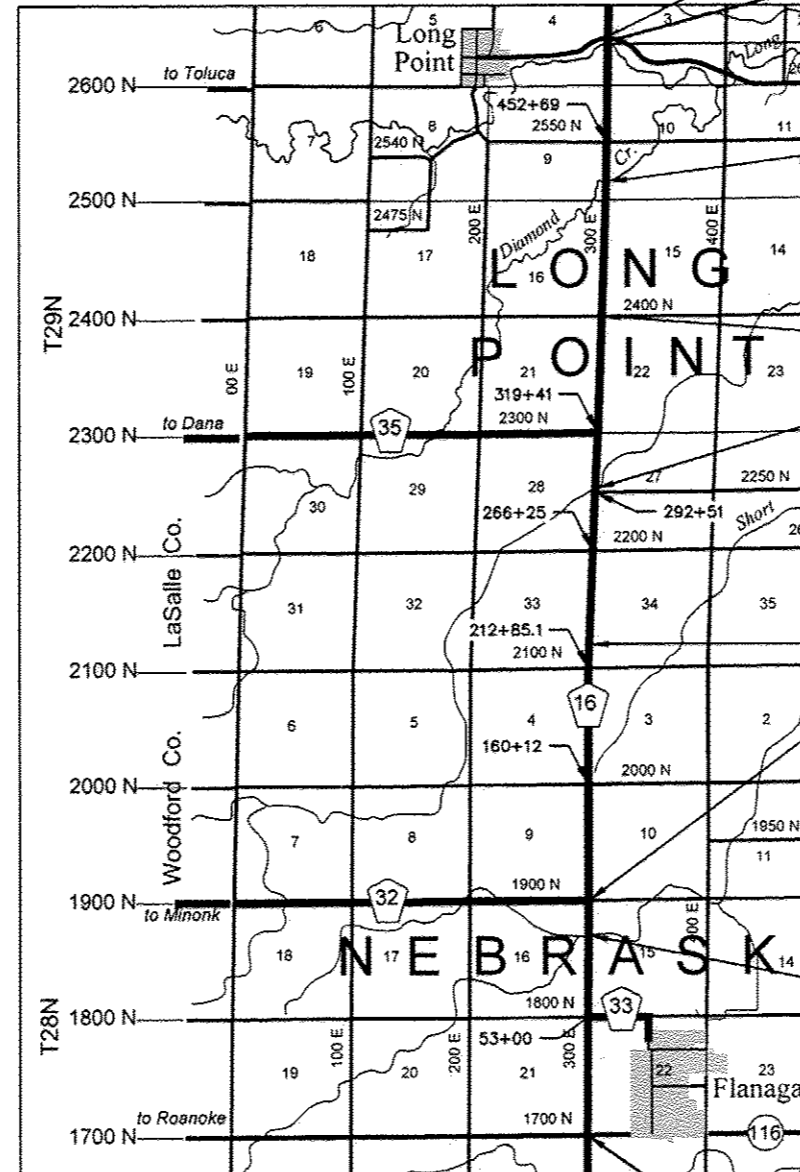
"THE ACCEPTANCE OF THIS PROJECT IS BASED ON THE MINIMUM DESIGN CRITERIA UNDER LAFO GUIDELINES."

APPROVED: 02-09-2013  
 [Signature]  
 LIVINGSTON COUNTY OFFICIAL

PASSED: 2-14-2013  
 [Signature]  
 DISTRICT THREE LOCAL ROADS & STREETS ENGINEER

RELEASING FOR BID BASED ON LIMITED REVIEW: 2-14-2013  
 [Signature]  
 DEPUTY DIRECTOR OF HIGHWAYS, REGION TWO ENGINEER  
 STATE OF ILLINOIS  
 DEPARTMENT OF TRANSPORTATION

STATE OF ILLINOIS  
 DEPARTMENT OF TRANSPORTATION  
 DIVISION OF HIGHWAYS  
 PLANS FOR PROPOSED  
 FEDERAL AID HIGHWAY  
 SURFACE TRANSPORTATION PROGRAM  
 F.A.S. ROUTE 355, CH 16, (FLANAGAN-LONG POINT RD)  
 SECTION 10-00196-03-RS  
 PROJECT RS-0355(121)  
 LIVINGSTON COUNTY  
 C-93-096-12



C.L. OF LONG POINT SPUR & CH 16, STA 500+41

END IMPROVEMENT STA 500+28

S.N. 053-3447, STA 498+51.72 TO 499+92.36, NOT AN OMISSION, 29.3' WIDE X 140.7' LONG

S.N. 053-3032, STA 434+26.5 TO 434+69.5 NOT AN OMISSION, 34' WIDE X 43' LONG

STA EQ 372+65 Bk = 373+00 Ah (-35.0')

S.N. 053-3033, STA 292+88.5 TO 293+33.5, OMISSION, 30' WIDE X 45' LONG

STA EQ 217+84.81 Bk = 217+85.45 Ah (-0.64')

STA EQ 106+11 Bk = 107+00 Ah (-89.0')

S.N. 053-3034, STA 90+28 TO 90+52 NOT AN OMISSION, 30' WIDE X 24' LONG

BEGIN IMPROVEMENT STA 0+33

R 3 E, 3rd PM

GROSS LENGTH = 49,995' = 9.469 MILES  
 NET LENGTH = 49,825.36' = 9.437 MILES

0 1 2 3 4  
 SCALE(MILES)

INDEX OF SHEETS

- COVER SHEET, STANDARDS, & SUMMARY OF QUANTITIES
- TYPICAL CROSS-SECTIONS & ENTRANCE SCHEDULE
- TRANSITION AT BRIDGES DETAILS
- INTERSECTION, MAILBOX & RUMBLE STRIP DETAILS
- SCHEDULE OF RESURFACING QUANTITIES

HIGHWAY STANDARDS

- 701301-04 LANE CLOSURE 2L, 2W SHORT TIME OPERATIONS  
 701306-03 LANE CLOSURE 2L, 2W SLOW MOVING OPERATIONS DAY ONLY ≥45MPH  
 701311-03 LANE CLOSURE 2L, 2W MOVING OPERATIONS DAY ONLY  
 701901-02 TRAFFIC CONTROL DEVICES  
 780001-03 TYPICAL PAVEMENT MARKINGS  
 BLR 21-9 TYP. APP. OF TRAF. CTRL. DEVICES - RD. CLOSED TO ALL TRAFFIC  
 BLR 22-7 TYP. APP. OF TRAF. CTRL. DEVICES - RD. CLOSED TO THRU TRAFFIC

SUMMARY OF QUANTITIES CONST. CODE 0005

ITEM NO.	ITEM	UNIT	QUANTITIES
40600100	BITUMINOUS MATERIALS (PRIME COAT)	GALLON	6,481.0
40600300	AGGREGATE (PRIME COAT)	TON	235.0
40600625	LEVELING BINDER (MACHINE METHOD), N50	TON	6,801.0
40603310	HOT-MIX ASPHALT SURFACE COURSE, MIX "C", N50	TON	10,380.0
40800050	INCIDENTAL HOT-MIX ASPHALT SURFACING	TON	422.0
44201723	CLASS D PATCHES, TYPE IV, 6 INCH	SQ YD	100.0
44300100	AREA REFLECTIVE CRACK CONTROL TREATMENT	SQ YD	118,978.0
48102100	AGGREGATE WEDGE SHOULDER, TYPE B	TON	6,209.0
58100200	WATERPROOFING MEMBRANE SYSTEM	SQ YD	469.0
67100100	MOBILIZATION	L SUM	1.0
70300100	SHORT TERM PAVEMENT MARKING	FOOT	9,970.0
70301000	WORK ZONE PAVEMENT MARKING REMOVAL	SQ FT	1,661.0
Δ 76001110	PAINT PAVEMENT MARKING - LINE 4"	FOOT	12,456.0
* X4401198	HOT-MIX ASPHALT SURFACE REMOVAL, VARIABLE DEPTH	SQ YD	2,447.0
* X7010216	TRAFFIC CONTROL AND PROTECTION, (SPECIAL)	L SUM	1.0
* Z0004556	HOT-MIX ASPHALT SURFACE REMOVAL (DECK)	SQ YD	469.0
* Z0029300	GROUT REPAIR	FOOT	50.0
* Z0055300	RUMBLE STRIP	EACH	8.0
† Z0076600	TRAINEES	HOUR	1,000.0
† * Z0076604	TRAINEES TRAINING PROGRAM GRAVITATE	HOUR	1,000

\* SEE SPECIAL PROVISIONS

Δ SPECIALTY ITEMS

† 0042

UTILITIES

CONTACT J.U.L.I.E. 811 or  
 800-892-0123 BEFORE DIGGING

TRAFFIC DATA

C.H. 16 - COLLECTOR  
 POSTED SPEED = 55 MPH-RURAL  
 DESIGN SPEED = 50 MPH-RURAL  
 DESIGN ADT= 1025/ YR 2028, 15 YEAR D.P.  
 CLASS III ROADS, 80,000# DESIGN

THIS PROJECT CONSISTS OF HMA LEVELING BINDER, HMA SURFACE COURSE, MIX "C", N50, AND AGGREGATE SHOULDERS BEGINNING AT A POINT NEAR THE INTERSECTION OF CH 16 AND IL RT 116 (1700N), WEST OF FLANAGAN, ILLINOIS AND EXTENDING IN A NORTHERLY DIRECTION TO THE INTERSECTION OF CH 16 (2640N) ALSO KNOWN AS THE LONG POINT SPUR.