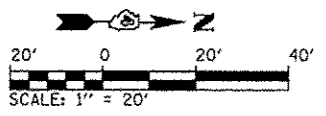
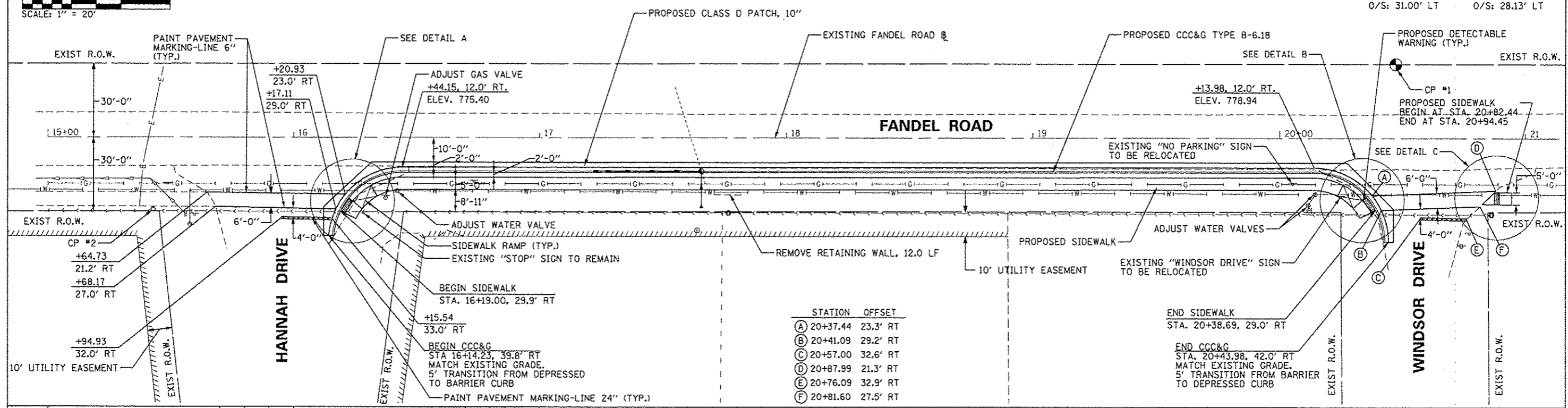


NOTE: THE CONTRACTOR SHALL ENSURE THAT ANY PIPES THAT MAY BE RUNNING THROUGH THE RETAINING WALL TO BE REMOVED ARE NOT DAMAGED AND ARE LEFT IN PLACE.



CONTROL POINTS

#1 N: 1496255.71	#2 N: 1495752.73
E: 2490353.94	E: 2490422.19
ELEV: 779.45	ELEV: 774.41
STA: 20+46.90	STA: 15+42.77
O/S: 31.00' LT	O/S: 28.13' LT



STATION OFFSET

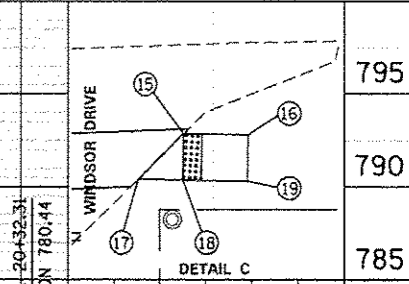
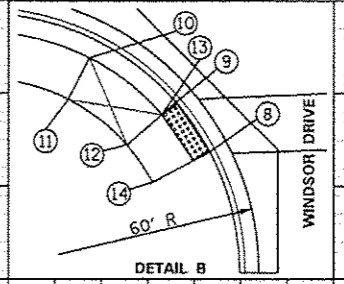
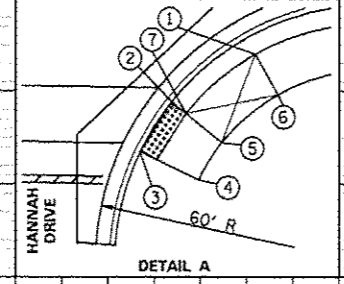
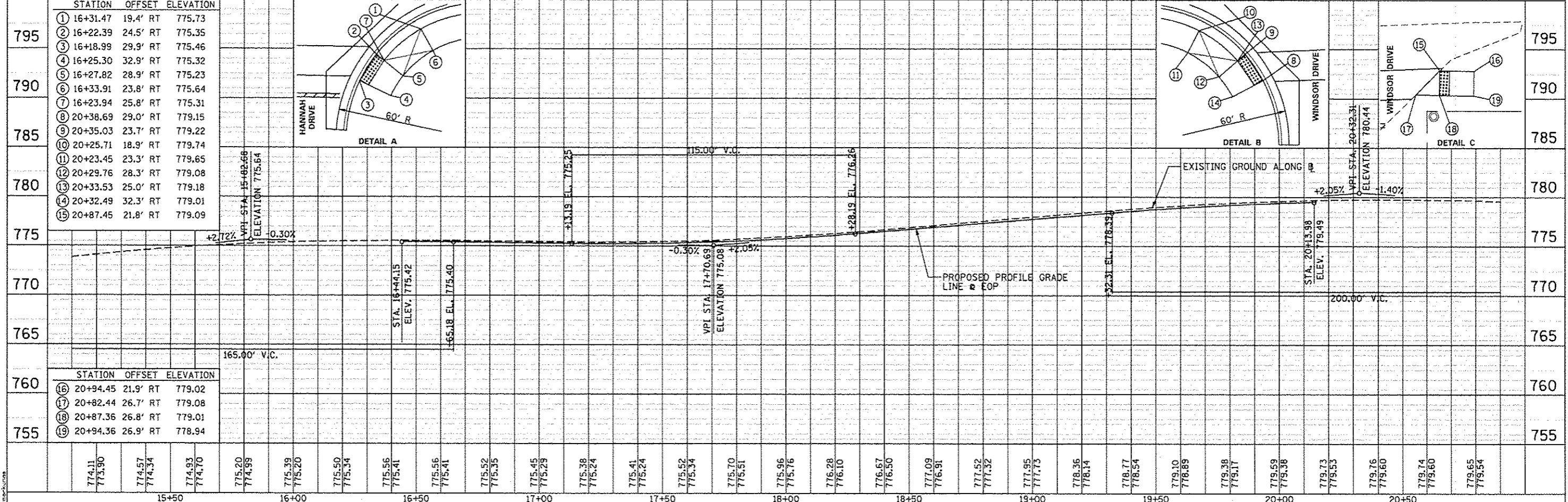
(A)	20+37.44	23.3' RT
(B)	20+41.09	29.2' RT
(C)	20+57.00	32.6' RT
(D)	20+87.99	21.3' RT
(E)	20+76.09	32.9' RT
(F)	20+81.60	27.5' RT

PLAN

DATE		
BY		
REVISIONS		
NO.	DATE	DESCRIPTION

PROFILE

DATE		
BY		
REVISIONS		
NO.	DATE	DESCRIPTION



STATION OFFSET ELEVATION

(16)	20+94.45	21.9' RT	779.02
(17)	20+82.44	26.7' RT	779.08
(18)	20+87.36	26.8' RT	779.01
(19)	20+94.36	26.9' RT	778.94