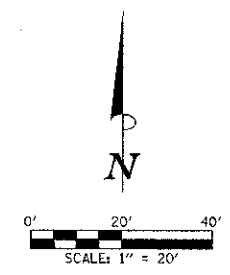


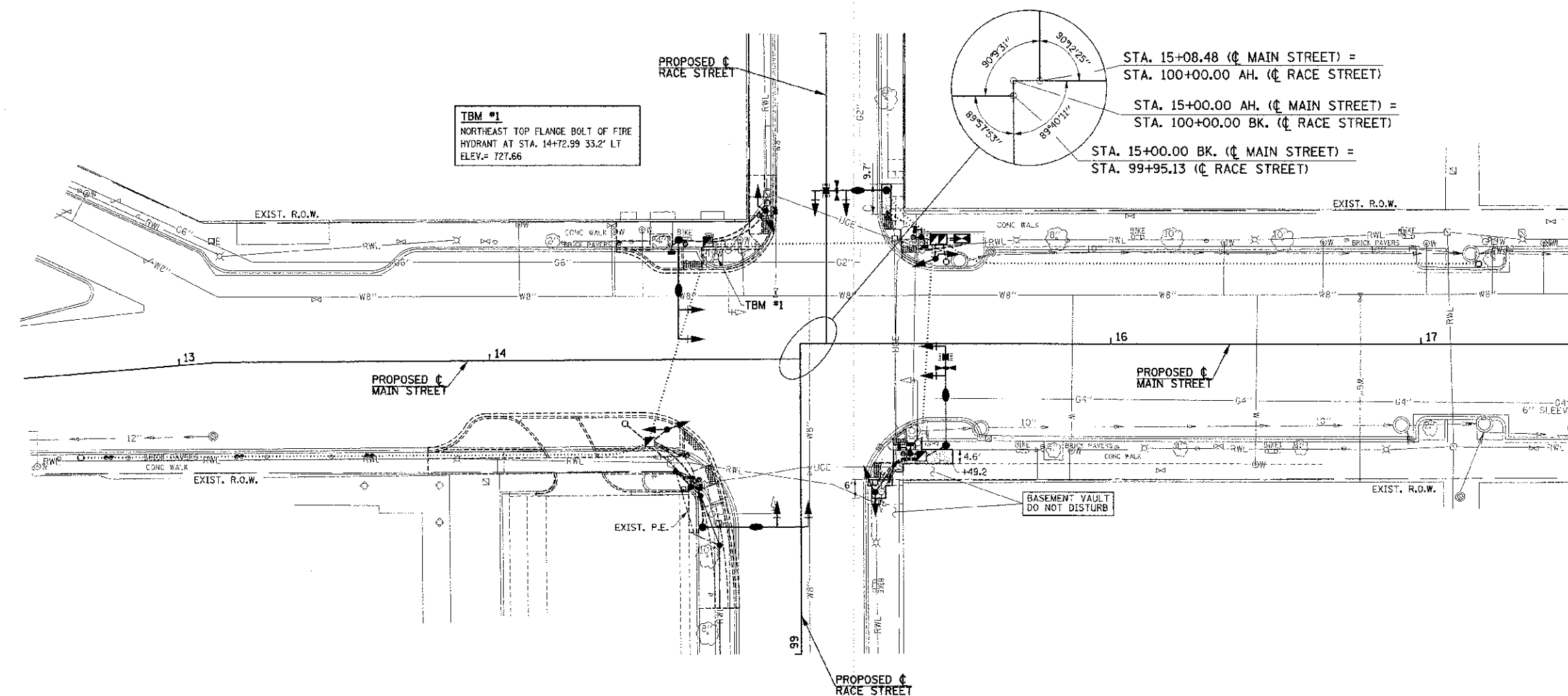
THE ROADWAY AND SIDEWALK IMPROVEMENTS AT THE MAIN STREET AND RACE STREET INTERSECTION WILL BE PERFORMED UNDER A SEPARATE PROJECT ALONG MAIN STREET AND ARE SHOWN FOR INFORMATION ONLY. THE CONTRACTOR SHALL COORDINATE THE PROPOSED SIDEWALK REQUIRED FOR THE TRAFFIC SIGNAL MODERNIZATION AT RACE STREET WITH THE PROPOSED SIDEWALK REQUIRED FOR THE MAIN STREET IMPROVEMENTS PERFORMED UNDER THE SEPARATE PROJECT AS DIRECTED BY THE ENGINEER. NO ADDITIONAL COMPENSATION WILL BE ALLOWED FOR THE COORDINATION OF PROPOSED ITEMS.

EXISTING TREES AND OTHER LANDSCAPING SHALL NOT BE DISTURBED UNLESS OTHERWISE DIRECTED BY THE ENGINEER.

THE TOPSOIL REQUIRED IN THE PLANTER AREAS WILL BE FURNISHED AND INSTALLED BY THE CITY OF URBANA.



LEGEND
 ----- PROPOSED IMPROVEMENTS BY OTHERS (SHOWN FOR INFORMATION ONLY)



TBM #1
 NORTHEAST TOP FLANGE BOLT OF FIRE HYDRANT AT STA. 14+72.99 33.2' LT
 ELEV.= 727.66

STA. 15+08.48 (C MAIN STREET) =
 STA. 100+00.00 AH. (C RACE STREET)
 STA. 15+00.00 AH. (C MAIN STREET) =
 STA. 100+00.00 BK. (C RACE STREET)
 STA. 15+00.00 BK. (C MAIN STREET) =
 STA. 99+95.13 (C RACE STREET)

BASEMENT VAULT
 DO NOT DISTURB

AGGREGATE FOR TEMPORARY ACCESS
 40201000

LOCATION	TON
APPROXIMATE QUANTITY	6
TOTAL	6

PORTLAND CEMENT CONCRETE SIDEWALK 6 INCH
 42400300

LOCATION	50 FT
NE CORNER MAIN AND RACE	29
SE CORNER MAIN AND RACE	135
TOTAL	164

FILE NAME = p:\0070001_Urbana - Main Street HSIP\Plan\shae\107_roadway.dgn
 PLOT DATE = 1/15/2013 9:06:18 PM

DESIGNED - JAJ	REVISED -
DRAWN - KLR	REVISED -
CHECKED - SMW	REVISED -
DATE - 01/2013	REVISED -

STATE OF ILLINOIS
 DEPARTMENT OF TRANSPORTATION

ROADWAY PLANS
 SCALE: 1"=20' SHEET NO. 7 OF 12 SHEETS STA. TO STA.

F.A.I. RTE.	SECTION	COUNTY	TOTAL SHEETS	SHEET NO.
7124	11-00510-00-TL	CHAMPAIGN	12	7
MAIN STREET			CONTRACT NO. 91481	
FED. ROAD DIST. NO.		ILLINOIS FED. AID PROJECT		