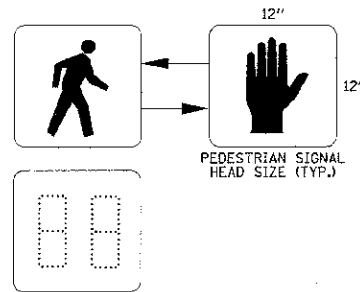




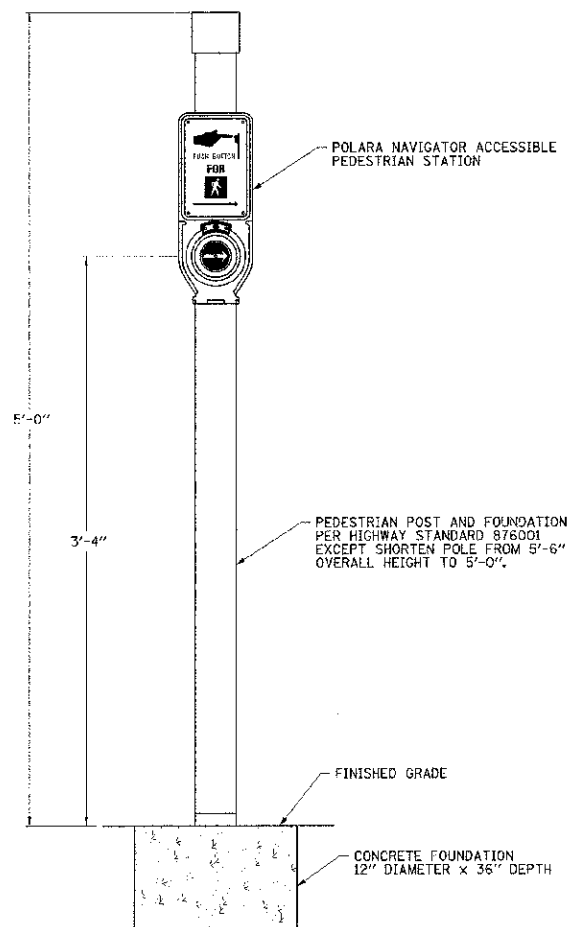
MUTCD R10-3

THE PEDESTRIAN PUSH-BUTTON SIGNS SHALL BE INCLUDED IN THE COST OF THE ACCESSIBLE PEDESTRIAN SIGNALS.

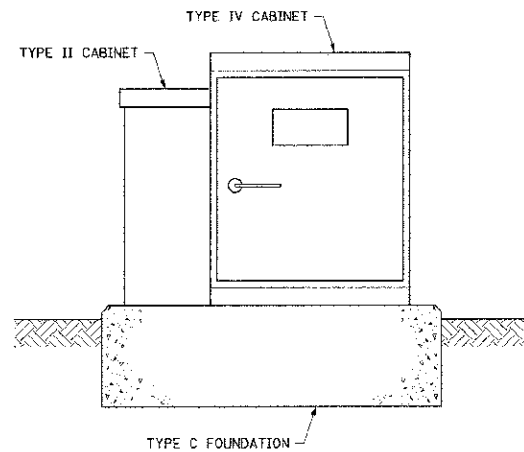
**PEDESTRIAN PUSH-BUTTON SIGN DETAIL**



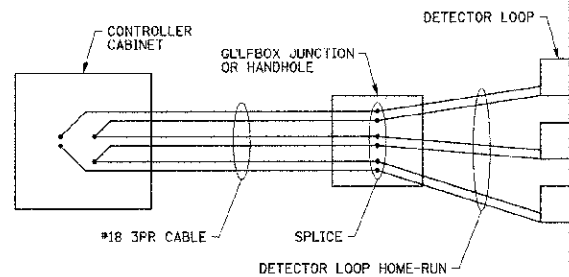
**PEDESTRIAN COUNTDOWN SIGNAL DISPLAY DETAIL**



**PEDESTRIAN PUSH-BUTTON POST DETAIL**

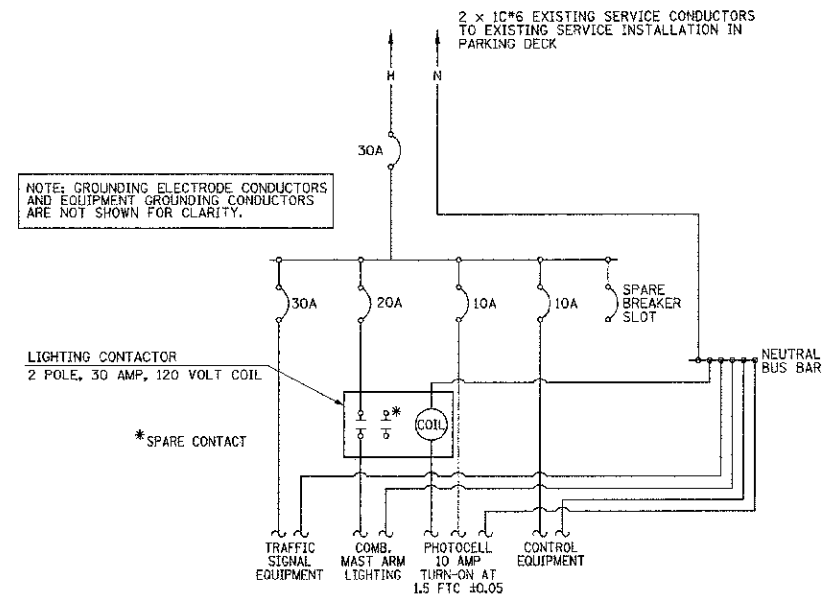


**UPS BATTERY CABINET MOUNTING DETAIL**

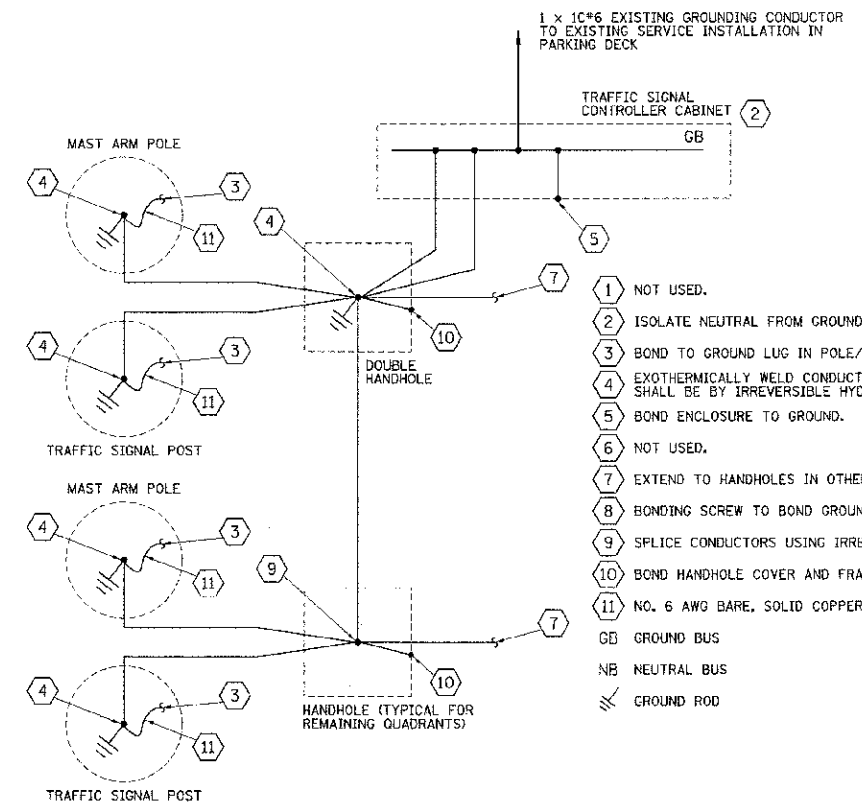


**DETECTOR LOOP WIRING DETAIL**

WIRED IN SERIES WITH MULTI-PAIR CABLE



**TRAFFIC SIGNAL CONTROLLER INSTALLATION DIAGRAM**



**TRAFFIC SIGNAL GROUNDING DIAGRAM**

ALL WIRES SHALL BE NO. 6 AWG STRANDED COPPER CONDUCTORS WITH XLP INSULATION UNLESS OTHERWISE INDICATED. THE INSULATION COLOR SHALL BE GREEN.

FILE NAME = p:\0070081_Urbana - Main Street HSIP\Plans\sheet\08.traffic signal.dgn	DESIGNED - JAJ	REVISD -	STATE OF ILLINOIS DEPARTMENT OF TRANSPORTATION	MAIN STREET & RACE STREET TRAFFIC SIGNAL PLANS TRAFFIC SIGNAL DETAILS		F.A.U. RTE. 7124	SECTION 11-00510-00-TL	COUNTY CHAMPAIGN	TOTAL SHEETS 12	SHEET NO. 12
PLOT DATE = 1/15/2013 9:08:20 PM	DRAWN - KLR	REVISD -		SCALE: NONE	SHEET NO. 12 OF 12 SHEETS	STA. TO STA.	MAIN STREET		CONTRACT NO. 91481	
	CHECKED - SMW	REVISD -				FED. ROAD DIST. NO.		ILLINOIS		FED. AID PROJECT
	DATE - 01/2013	REVISD -								